

10-10 INTERNATIONAL *News*

Volume 33 Number 2

\$1.50

April 1995 (Spring)

The Bighorn Museum of Amateur Radio Relocates

By Don Zielinski, K0PVI #9902

It has finally happened.....The response and interest generated by *The Bighorn Museum of Amateur Radio* has been so overwhelmingly successful that we have outgrown our facility in Byers, Colorado. The 1400 square foot building with its three storage units were getting so jammed that we could not accept one more piece of gear! We have been forced to search for a new home. Well, good news!

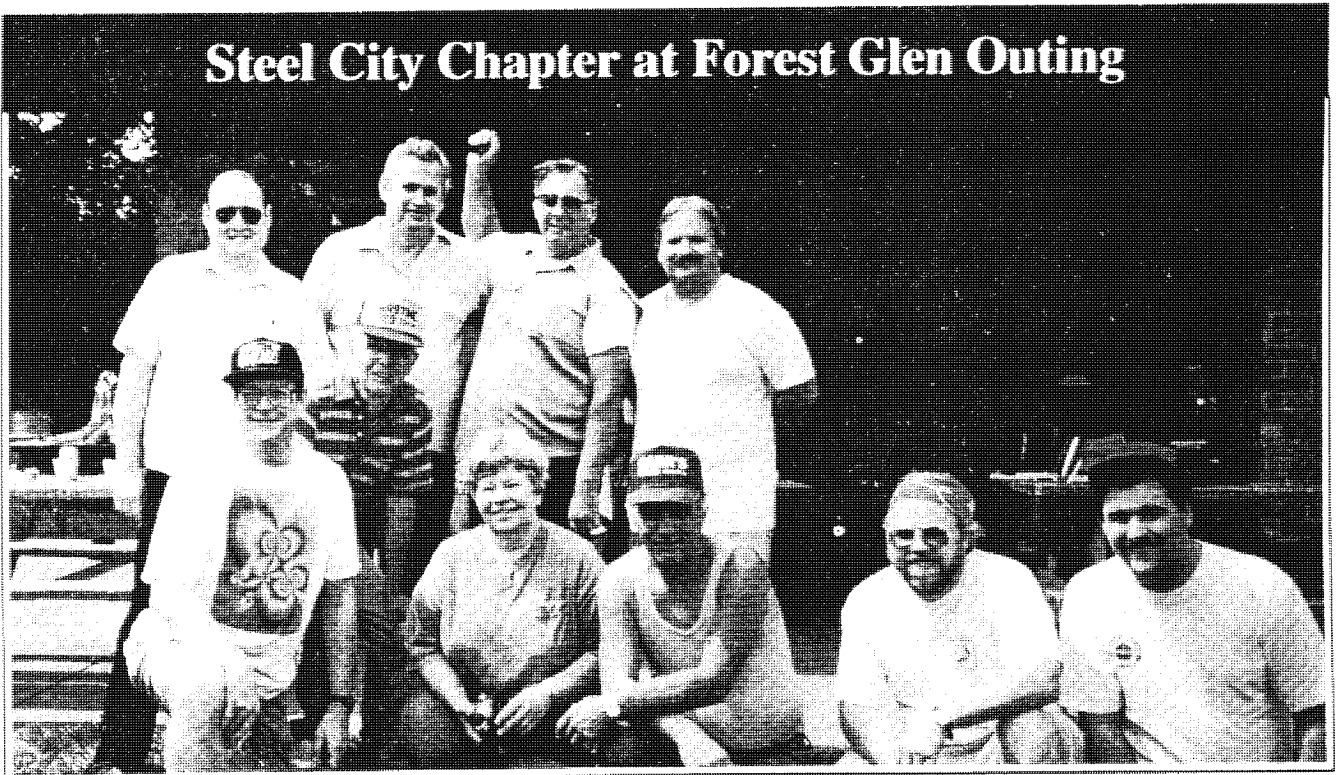
We have fallen into an extraordinary deal on a rather large building in Genoa, Colorado. Genoa iscontinued on page 4

Convention Plans in Final Stages of Preparation

Pre-registrations are coming in at a good pace, and the final preparations are being made by our President and Convention Chairman, Tom Henderson, K4CIH #33233. A full program of activities besides Forums, includes Chapter Tables, Ladies Programs, a Hospitality Suite, Shopping Tours, the usual 10-10 Net and W6OI "On-the-Air" just to mention a few. In addition, the annual 10-10 Board of Directors meeting will be held on Friday, June 16th. There will be a Board of Directors Open Forum scheduled for Saturday during which a

.....continued on page 29

Steel City Chapter at Forest Glen Outing



Top row left to right: Joe W19Z #42351, Wally KE9WZ #49610, Felix KF9TB #61489, Bob KB9ITO #60492,
Bottom row left to right: Verne B9FIV #65365, Ben WA9TWE #389, Betty KE9VK #50631, Tony KB9ITP #64096,
Paul N9JZY #49616, Joe KA9QAT #50624. Next picnic July 15, 1995. Hope to see you there.

OFFICERS AND DIRECTORS

President..... Tom Henderson, K4CIH #33233
4901 15th Place E., Tuscaloosa, AL 35404-4522
Vice President..... Chuck Imsande, W6YLJ #19636
18130 Bromley St., Tarzana, CA 91356-1701
Secretary..... Dave Prichard, KA5OVO #37297
16314 Thunderbay Dr., Houston, TX 77062-5111
Treasurer..... Kleth Schlottman, K17RK #63324
9581 E. Calle Cascada, Tucson, AZ 85715-5819
Director..... Linda Barnes, KJ4FM #43299
310 Sequoyah Dr., Kingsport, TN 37660-3742
Director..... L.B. Cebik, W4RNL #41159
1434 High Mesa Dr., Knoxville, TN 37938-4443
Director..... John Ellison, W0ERZ #5145
2 Douglass Ln., Kirkwood, MO 63122-4406
Director..... Marv Hagan, WB2SJQ #6090
549 Central Avenue Apt. 30-B, Cedarhurst, NY 11516-2133
Director..... Bill Howe, VK4WBH #22187
13 Fritz St., Loganlea, Queensland, 4131 Australia
Director..... Pete Matson, KC1CP #37190
73 S. Edgewood Rd., Niantic, CT 06357-2036
Director..... Jack Miller, W9WYN #6894
PO Box 123, Brookfield, IL 60513-0123
Director..... Ed Redwine, K5ERJ #11843
9 Yellowrose Lane, Augusta, KS 67010-2230
Director..... Bob Ryan, K6YVG #18022
26409 Doveweed Way, Santa Clarita, CA 91350-2647
Director..... Joe Williams, WA9TSG #310
PO Box 93181, Milwaukee, WI 53203-0181

NET OFFICIALS

Award/Cert. Guide Mgr..... Joyce Medlen, KE4KGB #66157
696 Loblolly Drive, Vass, NC 28394-8222
Chapter Coordinator..... Joyce Medlen, KE4KGB #66157
696 Loblolly Drive, Vass, NC 28394-8222
Contest Manager..... Harry Arsenault, K1PLR #21680
48 Crane Road North, Stamford, CT 06905
Editor & PR Manager..... Chuck Imsande, W6YLJ #19636
18130 Bromley St., Tarzana, CA 91356-1701
Historian..... Morrie Goldman, W6EHM #4189
21518 Marjorie Ave., Torrance, CA 90503-6418
Information Manager..... Mike Elliott, KF7ZQ #54625
9832 W. Gurdon Court, Boise, ID 83704-4080
Net Manager..... Nat Green, 8P6SA #45858
Welches Terrace, Saint Michael, Barbados
Records Manager..... Lee Pasewalk, WB6MGM #213
18815 Yukon Ave., Torrance, CA 90504-5820
Scholarship Manager..... Morrie Goldman, W6EHM #4189
21518 Marjorie Ave., Torrance, CA 90503-6814
SK Manager..... Grace Dunlap, K5MRU #218
PO Box 445, La Feria, TX 78559-0445
Supplies..... 10-10 International Net, Inc.
643 N. 98th Street #142, Omaha, NE 68114-2332

AREA MANAGERS..... Listed on page 31
AWARD MANAGERS..... Listed on page 30

PRINTED IN THE U.S.A.

10-10 *News*

INTERNATIONAL

EDITOR

Chuck Imsande, W6YLJ, #19636
18130 Bromley Street
Tarzana, CA 91356-1701
818/881-3676
FAX 818/996-4240

The **10-10 International News** is published four times annually by the 10-10 International Net, Inc.
Publication dates are approximately mid January, April, July and October.

DEADLINE FOR NEXT ISSUE

June 15, 1995

Each paid-up member receives a copy. This is an independent publication. Permission to reprint is hereby granted, providing suitable credit is shown.

News items and photos should be sent to the editor.

Technical articles and information on all 10-meter activities or news are welcome and solicited. All copy submitted must be typed.

Photographs are encouraged. Black and White or Color photos are acceptable. Include complete information on the back of each photo. Attach a label or other suitable paper to the back of the photo and write all information on the label.

10-10 Chapter activities and reports should be sent to the Chapter Coordinator, Dave Prichard, KA5OVO #37297, 16314 Thunderbay Drive, Houston, TX 77062.



Member
**AMATEUR RADIO
NEWS SERVICE**

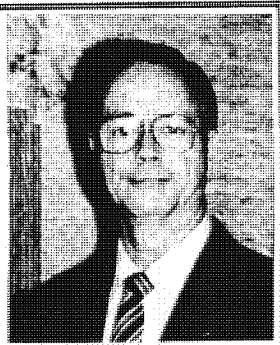
10-10 NET CONTROL STATIONS

ALL NETS BEGIN AT 1800Z

| | |
|--------------------|-------------------------|
| Monday (28.380) | Dick, K6PZE #1341 |
| Monday (28.800) | Lovergne, KD6JC #33704 |
| Tuesday (28.380) | Steve, AA8DP #46850 |
| Tuesday (28.800) | Nat, 8P6SA #45858 |
| Wednesday (28.380) | Christine, N7PVL #58018 |
| Wednesday (28.800) | Louise, N6ELK #36654 |
| Thursday (28.380) | Bill, AA6ZW #62075 |
| Thursday (28.800) | Bill, WB6OMH #6608 |
| Friday (28.380) | Dan, WV4Y #39409 |
| Friday (28.800) | Sherm, K6PTF #17977 |
| Saturday (28.380) | Ed, KC4RIY #58203 |
| Saturday (28.800) | Al, W6RNX #92 |
| Sunday | "NEVER ON SUNDAY" |

President's Message

Tom Henderson
K4CIH #33233



Recently, a number of questions, concerning the need for the dues to be increased, have been relayed to me. I will try to answer the best that I can.

Numerous complaints have been voiced, over the past several years, about receiving the *10-10 News* late, not at all, or in a badly torn state. DX was at a loss to try to stay current with the affairs of 10-10 due to the great delay, sometimes up to 2 or more months, in receiving the *News*. There have been times that the *10-10 News* just sat on the post office dock and of course, being bulk mail it was destroyed and never forwarded. We also did not receive new address information, except for an extra cost to 10-10.

This was considered by the Board of Directors to be a serious problem, and it was decided that we would change the mailing of the *News* to first class to US members and airmail to all DX members. The cost is steep indeed, but we felt it was necessary to provide better service to the membership. This not only provides much faster delivery, but the *News* can now be forwarded at no cost to a new address. We have also increased the size of the *News* to be able to have a more varied magazine and try to reach everyone's interests. It seems we are doing better in this department.

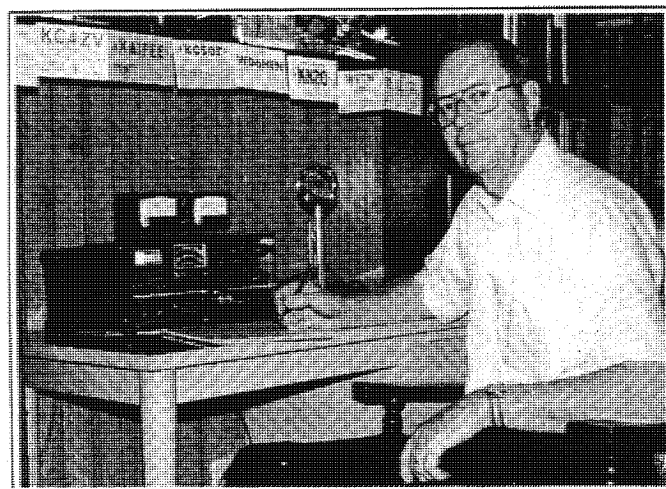
Members have asked what it costs for the Board of Directors and other leaders to handle all of the work of 10-10. It is a fair question and deserves a straight answer. Some years back, we all realized that 10-10 was both national and international in scope and deserved representation from all parts of the membership, thus the enlarged Board of Directors. Consequently, 10-10 revised its bylaws and held open elections. Our organization has been blessed with excellent candidates, excellent leaders, coming from all across the country and world. Opening up leadership roles in 10-10 to all members means that we have to make it possible for any elected member to attend the Board Meeting, held once each year, no matter what the individual's financial status may be. The inevitable consequence has been that we must pay for travel and lodging, including all the necessary ordinary

expenses normally paid by the average business for such things. Otherwise, we create the danger of having a Board that represents only those members who can pay their own way: what a waste of membership talent and service! Although travel and lodging is paid for by 10-10, each officer pays for his or her own food at Board Meetings.

It must be remembered, that even though we are a not-for-profit organization, considerable costs are incurred in the conduct of our daily business to provide the services that the membership desires and requires. We endeavor to try to meet the needs of the membership with as many services as possible. We accept any and all suggestions as to how to better the organization and bring to you, the membership, that which you desire. The membership is what the Board of Directors is all about. You elected us to serve you, and that is just what we are trying to do. Remember, what we do, comes from suggestions made by the membership from what we learn of problems that need solving, and from what we learn that will make membership services better. We have formed a number of committees that are available to help you with any problem, suggestion, and/or question you may have. We function at your request.

Convention time is drawing near. We are receiving pre-registrations and are encouraged by the numbers so far at this early date. There are still hotel rooms as of this writing at the Sheraton, but if you are planning to attend and just haven't got around to making room reservations as yet, it is suggested to do so in the immediate future while there are still rooms available in the block reserved for 10-10. Call the Sheraton Capstone direct or room reser

.....continued on page 14



Harvey Albright, KA5ETQ #54045
of Norman, OK with his Swan 270, D-104 Mike.
Harvey, a retired Baptist Pastor "gets out" with a
10-meter vertical antenna.

Bighorn Museum Relocates

continued from page 1

situated in East-Central Colorado about 10 miles east of Limon and around 100 miles east of Denver on busy Interstate 70. The building was built in 1906 and is listed in The Historical Registry. In past days it has been used as a grocery store, a dry goods store, and even a dance hall! It is a 10,720 square foot, two story brick building with a full basement, a two car detached garage, a yard and patio area. It is located right on Main Street in the heart of downtown Genoa. It has been offered to us for the the amount of back taxes owed over the last eight years, approximately \$4,000.00. We are currently seeking donations for the purchase and renovation of the building. Once the purchase and renovation is secured, we will be eligible for numerous grants both from the government and corporate level for the maintenance and operation of the *MUSEUM*.

We currently have over 600 pieces of restored working gear dating from the 20's to the 70's. Amateur publications, periodicals, catalogs and memorabilia from the 20's to present. At this time we have nine operational stations on the air with future plans for an intricate linked UHF/VHF/HF FM system and full service Packet BBS and link. The *MUSEUM* which is fostered by The Colorado Bighorn Amateur Radio Club, Inc. also has a VE testing team who not only administer both Amateur and Commercial exams at the *MUSEUM* but travel to conventions and hamfests also!

Donations are currently being solicited and accepted to make this worthwhile endeavor possible. Organizations and Corporations who donate to the *MUSEUM* will be encouraged to display their banners, brochures, publications or equipment within the museum. Those who donate \$100.00 will receive a "Charter Membership" in The Museum Association. Those donating \$500.00 or more will also receive a handsome plaque depicting their interest and generosity. All who donate will be commemorated on a plaque which will be on permanent display in the *MUSEUM*. The amounts of all donations will be kept confidential. This is your chance to become a part of Amateur Radio History! We have not at this time obtained 501C-3 status, so your contribution may or may not be tax

deductible. It has been suggested that we may be able to operate under the town of Genoa's status temporarily, but this has not yet been confirmed. 501C-3 involves a lot of time and red tape, but we will pursue it for the future. The Colorado Bighorn Amateur Radio Club and Museum is a legal corporation in the state of Colorado. It is listed as a non-profit, educational, scientific organization.

You may direct all donations and inquiries to: The Bighorn Museum, Don Zielinski, K0JPVI #9902, PO Box "DX", Genoa, CO 80818-0119.

"Rascal Scooter" Mobile

Jim McCann, N6MCF #44662, on his Rascal Scooter mobile. Jim uses his Rascal to "mobile" to the doctor and drugstore about 4 blocks away from his Hawthorne, CA home station. He is 2-meter mobile on the Rascal and operates on the Catalina Island Repeater, located just 22 miles off the coast of Southern California.

Jim says he has seen mobile trucks, cars, buses and bicycles but never a mobile scooter. He has about a 20 mile range and feels safe with his 2-meter mobile while making his local mobile trips. He says he has told many of his 10-10 friends about his scooter so he sent us his picture for all to see.



Jim McCann, N6MCF #44662
Rascal Scooter Mobile

USE PACKET TO CHANGE YOUR CALL OR ADDRESS

Send your information to:

WA6POZ @ WB0BLR.IA.USA.NA

YOU WILL RECEIVE A REPLY IF YOUR MESSAGE IS
RECEIVED - NO REPLY, NO MESSAGE - SEND AGAIN

The Future of Amateur Radio

MEET ONE OF OUR
YOUNG 10-10 MEMBERS

There is *no* column this issue because there was *no* input. What we need is someone to volunteer to search out our young 10-10 members, obtain the information about them, and write this article once each quarter. If you are interested in volunteering a few hours each quarter to help make the *10-10 News* a better magazine and also publicize our young 10-10 members, drop the Editor a note. Address is on page 2. It can be fun and rewarding. How about it? Drop the Editor a note today.

HAMFEST INFORMATION

NORTHERN KENTUCKY

The Northern Kentucky Amateur Radio club will hold "Ham-O-Rama '95" on Sunday, June 11, 1995 at the Erlanger, Kentucky Lions' Park. Prizes and Forums. ARRL sanctioned. Indoor exhibit area for vendors and outside flea market. General admission beginning at 8:00 a.m. Admission \$5.00 at the door, \$4.00 advance with children under 13 admitted free. Erlanger Lions' Park is located I-75 Exit 184-B (Route 236 East), one mile to Dixie Highway (US Route 25 and 42). Turn right one mile to Sunset, right on Sunset to end of street.

For more information: KC4FET % NKARC, PO Box 1062, Covington, KY 41012

.....Ken Rood, KD4PN #49944

NEW ENGLAND ARRL CONVENTION

10-10 will have an exhibit at the ARRL New England Division Convention on July 29-30, 1995 in Manchester, NH. The location is the Center of New Hampshire Holiday Inn and Convention Center, off Route 293 at exit 5. 10-10 will be located just off the main concourse. This will be similar to our Boxorough although we will not be running the 10-10 club station, W6OI.

For more information contact North East Convention Associates, Inc. PO Box 475, Goffstown, NH 0345-0475.

.....Pete Matson, KC1CP #37190

New VP Manager Announced

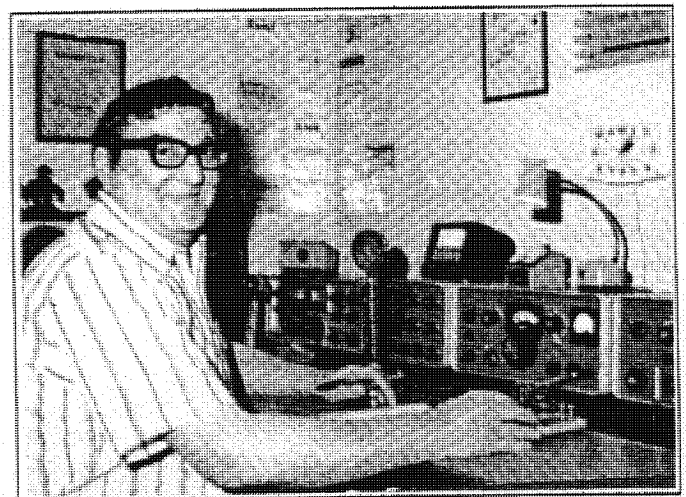
The Operations Committee, under the Chairmanship of Ed Redwine, K5ERJ #11843, has announced the appointment of Carl Fisher, W0HIK, #40678, as the new 10-10 VP Manager.

Carl is an active, full member of 10-10 having joined in 1986. He is currently serving as the Certificate Manager (CM) for the Air Capital Chapter basic certificate. His 10-10 activities include paper chasing, and working on the various 10-10 awards, BARS, VP numbers and counties. Many will remember meeting Carl on the air or at our conventions in Arlington, TX and Wichita, KS.



Licensed since 1948 with the same call and an advanced class license, Carl has spent his adult career in electronics. Starting as an electronics technician with the Navy in 1944, Carl joined the Kansas Turnpike in 1957 and recently retired from that organization as the Communications Supervisor. His leadership and guidance in electronics has resulted in state-of-the-art communications for the Kansas Turnpike Authority. He has computer "savvy" and just recently upgraded his own system to a 486 DX2 with an HP laserjet printer. Carl is very aware that his new volunteer "job" with 10-10 is time sensitive and should have no problem in keeping the VP Awards "on track".

VP Awards should be sent to Carl Fisher, W0HIK #40678, 5 Angelina Drive, Augusta, KS 67010-2262.



John Maver, W6MQK #1094, of Pasadena, CA.

A Half-size Two Element Beam with a Full Size Punch

By Glenn Blackwell, K4HJJ #66998

After deciding to build a small 10 meter Yagi for fixed or portable operation came the questions: What length elements? How many elements? What boom length? What type of loading? Which type of matching? and, how to make it lightweight, collapsible, inexpensive, and yet maintain high performance?

Element Length - After a couple of weeks of both computer and physical modeling, I decided on half size elements (approximately 8 feet) with high Q center loading combined with a small amount of capacitive loading. This combo gives approximately 90% of the efficiency of a full sized element. While distributive loading and capacitive loading could slightly improve the efficiency, the trade-off would be heavier elements to support the weight and wind drag, and would reduce the portability and aesthetic value of the system.

How Many Elements? For a minibeam, this question is really two or three elements, since the boom spacing cannot be significantly reduced from a full sized array. First looking at a two element Yagi (full sized or reduced elements), the most workable element spacing for either a single director or reflector is approximately 0.12 wavelength or approximately four feet at 28.350 MHz; this means that the folded eight foot elements and boom are all approximately four feet long. How convenient for portability.

After both modeling and building a three element version on an eight foot boom, the results were only slightly better gain, approximately 1 dB, with an expected reduction in impedance, bandwidth, and efficiency, although the F/B (front to back) ratio as expected was considerably better. The overall comparison did not justify a doubling of required real estate for the three element. To see a significant difference in performance, the boom length would have to be in the 12 foot to 15 foot range - not a small antenna, in fact, a tripling of space. Well, this answered the question of boom length, so back to the two element version with a four foot boom.

Now that the antenna is small, lightweight, and highly efficient, how to match it to the 50 ohm feedline since the drive impedance is less than 12 ohms? And, we want to avoid the bulk and expense of a balun/transformer. Let's try a modified helical hairpin match and keep the antenna small,

feedline since the drive impedance is less than 12 ohms? And, we want to avoid the bulk and expense of a balun/transformer. Let's try a modified helical hairpin match and keep the antenna small, inexpensive, and efficient. After several empirical tries, a 1:1 match was achieved for the entire Novice/Technician phone segment, 28.300 to 28.500 and rose to 1.5:1 at 28.0 MHz and 28.650 MHz - matching accomplished.

On-the-air Tests - Front-to-back was tuned to approximately 18 dB at 28.5 MHz on a 4 wavelength test range at 1/4 wavelength height. 28.5 MHz was chosen as the maximum gain occurs at a lower frequency than maximum F/B on Yagi antennas. Using the antenna at eight feet above ground on our deck was a real treat. Although our deck is surrounded with vegetation and trees, the 4 1/2 foot turning radius made life simple. Contacts were easily made with various States, South America, the Caribbean, and South Africa using only 10 watts. I now put the antenna up 30 feet on an unguyed TV mast attached to my deck rail and repaired my Kenwood P.A. for approximately 70 watts output. I was ready; the band was not! A whole week of just occasional weak openings to California. Then, on Sunday morning, January 29th, a great Sporadic E opening to Europe, Africa, and South America. After snagging several Europeans with one call and 5-9 reports, I called CQ and had a large pile-up. In a little over one hour, I had logged over 37 European and African contacts, and when I went QRT, they were still calling. Later on the same day, I worked a number of South American stations which brought the total to 24 countries for the day - not bad for the sunspot bottom!

What I have described is a efficient two element minibeam that has a turning radius of only 4 1/2 feet with characteristics comparable to a full sized beam. The antenna is collapsible to 4' x 4' x 4' for portable, field day, or R.V. use, but is also great as a permanent system especially for those with limited space.

For more information on this antenna, send an SASE to: Glenn R. Blackwell, K4HJJ #66998, PO Box 2803, Atlantic Beach, NC 28512-2803. Note that current call book address is incorrect.

Editors Note: Glenn Blackwell has worked in Research Engineering for over 20 years. Using his four element phased array design, he won both the ARRL DX and CQ WW DX Contest for the USA single op/single band 3.8 MHz 1989 and has recently become a member of 10-10. Glenn is planning to demonstrate this antenna at the 10-10 Convention in Tuscaloosa in June. Don't miss it!

Scholarship Fund News

Morrie Goldman, W6EHM #4189

The Foundation for Amateur Radio will again administer the 10-10 Scholarship Program for 1995. FAR will administer a total of 57 scholarships, two of which are funded by 10-10.

Licensed Radio Amateurs may compete for these two 10-10 scholarships if they plan to pursue a full-time course of study beyond high school and are enrolled in or have been accepted at an accredited university, college or technical school. The 10-10 Scholarships are for \$750.00 each.

Additional information and an application form may be requested by letter or QSL card prior to April 30, 1995 from:

FAR Scholarships
6903 Rhode Island Avenue
College Park, MD 20740-3713

Applicants for the 10-10 Scholarships must provide a written recommendation from a current active 10-10 member (one whose dues are paid current). Applications must be signed and received by FAR prior to June 1, 1995.

Additional VP Awards

Our new VP Award MANAGER, Carl Fisher, W0HIK #40678, in reviewing the VP Awards information he received when accepting the VP Award Managers position, has discovered a few awards that never appeared in the *News*. We want to honor those who have received the following awards by publishing their awards, calls and 10-10 numbers.

VP AWARDS

Carl Fisher
W0HIK #40678

VP-100

| CERT# | CALL | 10-10 # |
|-------|-------|---------|
| 336 | N0GGI | 52964 |

VP-200

| | | |
|-----|--------|-------|
| 155 | KA1LHO | 55043 |
| 156 | KC5BKT | 64386 |
| 157 | KA2NJE | 49721 |
| 158 | AD4QF | 08985 |
| 159 | WA2BLF | 14142 |
| 160 | AD4LL | 54408 |

VP-300

| | | |
|----|-------|-------|
| 91 | N6GDS | 36046 |
|----|-------|-------|

VP-400

| | | |
|----|-------|-------|
| 59 | N5AFV | 27571 |
| 60 | K3TUJ | 07561 |

VP WORKED ALL STATES

Carl Fisher,
W0HIK, #40678

| CERT# | CALL | 10-10 # |
|-------|--------|---------|
| 10 | WA5WQP | 03372 |
| 11 | KB5FR | 17217 |

With Sorrow we Report

It is with deep sorrow that we report that Chris Barnes, 24 year old son of Bill and Linda Barnes, KJ4FM #43299, was killed in an auto accident on the morning of 25 March 1995. Chris was in the Navy at Pt. Mugu, CA. and was killed instantly while a passenger in a car in Ventura County, CA with three others. The others sustained minor injuries. Eye witnesses have told the Navy that the car that hit them was all over the road, even in their lane of traffic and the driver swerved and even went onto the shoulder to avoid the collision. The driver of the other car was arrested and charged.

Chris lettered three years in football in High School and was an All American in football in college setting a number of records, many of which still stand.

Linda is one of our 10-10 Directors. All of the Officers, Board of Directors and Net Officials, as well as all 10-10 members, extend our sympathy to Bill and Linda and their family.

FCC HIGHLIGHTS

*News and Information
from and about the FCC*

FCC Releases Details on Vanity Call Signs

On February 1, 1995, the FCC released the full text of how amateurs may obtain station call signs of their choice. There were not too many surprises over the information contained in the preliminary press release. The FCC stated: There are almost 15 million possible combinations of letters and numbers for amateur station call signs. And until recently they were unable to accommodate the many thousands of requests received for call signs of the licensee's choice. One of the FCC's many steps of reinventing Government was to implement new licensing processing capabilities to make it practicable to grant such requests. The FCC's new increased capability also now makes it possible to resume issuing new club and military recreation station licenses.

The FCC stated: "We have decided to offer a vanity call sign system to the amateur service community, in recognition of the strong sense of identity among amateur operators that is grounded in

.....continued on page 19

An-Ten-Ten-nas

By L. B. Cebik,
W4RNL, #41159

In each issue of the News, we shall try to clarify a significant cluster of ideas used in antenna work. Our object is to help you make the best decisions about the antennas you buy or build with out imposing our own prejudices on you. The more you understand, the better your choices will be.



No. 6 The Simplest 2-Element Yagi?

Building a beam is not as difficult as it may seem. Of course, a many-element, multi-band Yagi is an advanced exercise in design and construction. However, a 2-element Yagi for 10 meters is entirely manageable for the novice builder. Parts are available from almost any large home supply warehouse. About \$50 for all new materials will produce a very usable beam. Mast and rotator, of course, are extra, but a TV rotator and well-guyed mast will easily support a 10-meter 2-element Yagi.

Fig. 1 shows the general outline of one of two forms of a 2-element Yagi. Some designs use a driven element and a director. The design in Fig. 1 uses a driven element and a reflector. The circle across the Y-axis line (the direction of forward gain) indicates the feedpoint.

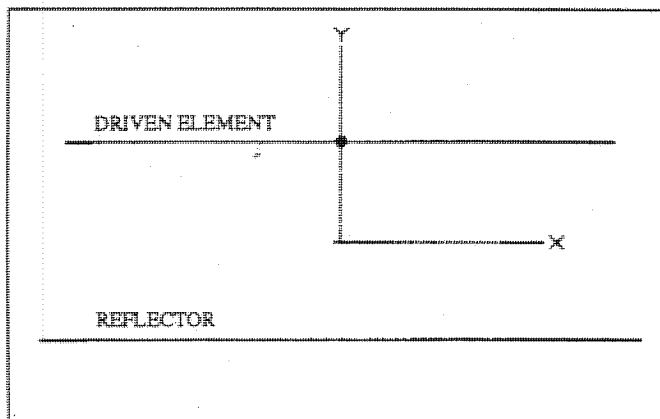


Fig. 1. General outline of a 2-element Yagi.

In the December, 1990, issue of CQ, Bill Orr, W6SAI, presented "A Compact 2-Element Yagi for 10 Meters" (pp. 83-84). His design used a combination of 1" and 7/8" diameter aluminum tubing, along with a gamma match for the 30-ohm

feedpoint impedance. His beam was remarkably well-behaved. The gain varied from 6.86 dBi down to 6.08 dBi from 28 to 29 MHz, while the front-to-back ratio varied from a low of 9.09 dB to a peak of 11.29 dB. The beam was 17.5' at its widest with the elements separated 4.25'. Fig. 2 shows the beam's pattern at the design center frequency (28.5 MHz). It offers neither the highest gain nor the highest front-to-back ratio obtainable with two elements, but it gives consistent performance over a wide bandwidth.

It is possible to simplify Orr's construction, using either 1" or 0.75" diameter tubing available from hardware outlets. Moreover, by separating the elements 6', the feedpoint impedance increases to 50 ohms, allowing direct feed (with a 1:1 balun).

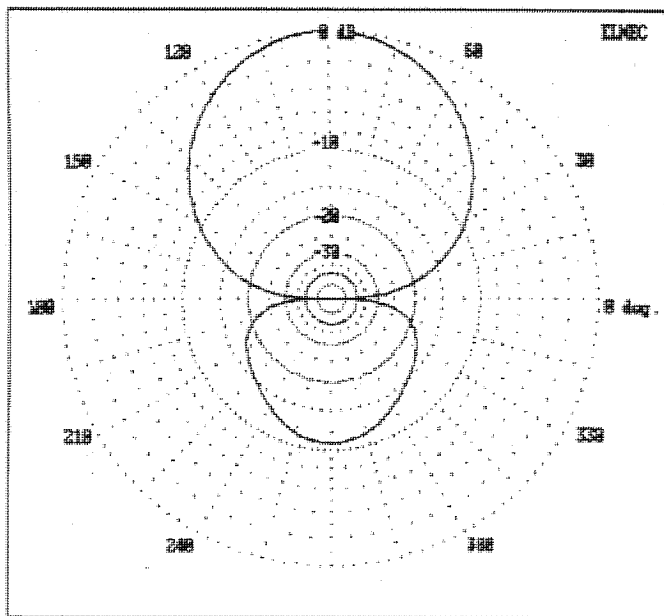


Fig. 2 Azimuth pattern in free space of a wide-band 2-element Yagi.

In fact, with 6' element separation and the dimensions shown below, SWR is less than 1.5:1 across the first MHz of 10 meters. We do lose some gain and front-to-back ratio, but less than 0.5 dB in each case, and the front-to-back ratio is more consistent across the band, never dropping below 10 dB.

The dimensions for the elements are as follows:
1" diameter aluminum tubing, 6' element separation:

Driven element: 15.9' ($\pm 7.95'$) Reflector: 17.52' ($\pm 8.76'$)

0.75" diameter aluminum tubing, 6' element separation:

Driven element: 15.98' ($\pm 7.99'$) Reflector: 17.5' ($\pm 8.75'$)

.....continued on page 9

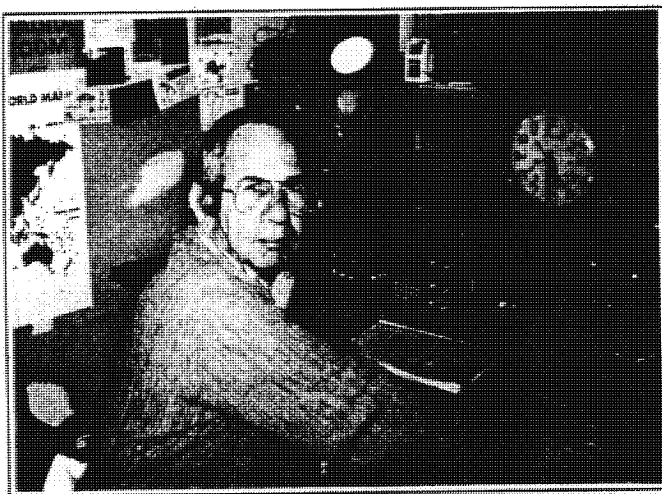
An-Ten-Ten-nas

continued from page 8

The driven element must be split at the center and fed like a standard dipole. To accommodate this, I mounted both elements on scrap plywood plates 3/8" thick, about 24" long and about 6" wide. Varnish or (better) fiberglass epoxy the plywood for weather protection. A pair of #10 stainless steel nuts and bolts (with both flat and lock washers) mount each half element to the plate. The bolts at the center make a good attachment point for a balun or for a coax connector to mate with another on a balun. Small U-bolts can be used for the outer fasteners.

The reflector is longer than a pair of 8' aluminum tubes. I used a 1½' piece of tubing as the center for my 1" diameter version of the reflector. Inside was a 3' section of 7/8" diameter tubing that supported the 8' lengths of reflector tubing. The #10 hardware at the center goes through the center 1" tube, while the outer #10 hardware goes through (or around, if U-bolts) the 8' extensions. All the #10 hardware goes through the 7/8" tube. Additional sheet metal screws (also stainless steel) clamp the extension tubes to the inner tube at its ends, cutting down on vibration.

For a boom, I used a 6½' section of Schedule 40 PVC, 1¼" nominal diameter. A pair of 1½" U-bolts holds each plate to the boom. Thick PVC tubing works well up to about this length, but much longer might produce too much sag. The plates go under the boom, and the elements are below the plates. Connections to the center of the driven element go to an extra set of lock washers and nuts on the element mounting hardware. The balun and coax are then taped to the boom and mast.



Philip Urquiola, WB0GFV #43419 (VP 2743) of Hallsville, MO, has worked over 200 countries with 170 countries confirmed.

Phil also holds license CP1AT in Bolivia

There are very few cautions to give for this beam. Check dimensions. Be sure all metal-to-metal contact is very good. Use stainless steel hardware to avoid rust or using protective spray sealers that work their way between contact points. (However, use flexible coax sealer over any screw-type coax connection.) As with any beam, check both mechanical and electrical connections every few months and after any severe storms.

Although the beam will perform well from a 20' mast, a 35' mast (or higher, of course) is even better. Expect some gain, almost 2 S-units of front-to-back ratio, and excellent rejection of signals off the side. This beam will not open 10 meters during the sunspot null, but it may let you work some of the weak backscatter signals on the band. In addition, it is useful in nets, since you can still hear locals off the rear while aimed at weaker signals. For versatility, the 2-element Yagi will certainly beat a fixed wire dipole hands down.

... note from the Springbok Chapter

We are still looking for Springbok members with the following numbers to complete the Chapters records.

SCI #111, SCI #112, SCI #124, SCI #127,
SCI #128, SCI #135, SCI #147, SCI #151,
SCI #154, SCI #156, SCI #158, SCI #159,
SCI #197, SCI #199

If any one has these numbers, please send a voided QSL card to me or send via packet to: kc4rhw@n4qea.#metn.tn.usa.na. If these numbers are not being used, they will be issued to fill in the gaps. If any member has worked any of the above numbers and they have become a SK, we still need to know. SK numbers will not be re-issued. Many thanks to all in advance for any help.

For a list of *Mystery Calls*, send a S.A.S.E. or check packet monthly for *Mystery Calls*. Each one is worth a 100 point bonus each month.

.....Jim Whittlesey, KC4RHW #57051
CM Springbok Chapter

USA, Canada, South America and Carribean

NEW FCC FORM 610 APPLICATION FOR AMATEUR OPERATOR/PRIMARY STATION LICENSE

Available for an SASE from
Mike Elliott, KF0ZQ #54625
10-10 Information Manager
9832 W. Gordon Court
Boise, ID 83704

Mark your SASE "Form 610"
A 10-10 MEMBERSHIP SERVICE

TenX DX NEWS

By Mike Davidson
KC5CP, #24949



In the US everyone looks forward to good skip conditions on Ten Meters each winter. This is the time when you work the DX that you missed during the Summer. I hoped that this season would give us a few openings into Europe and Asia but band conditions **have been poor** this winter. The number of openings into Europe have been less than a dozen over this past quarter, which was less than expected. I worked the **ARRL DX CW & SSB** contests single band Ten and talked with 10 Europeans and 7 Japan stations, none on CW, and made 142 QSO's with only 58 countries on SSB.

I worked a **new 10-10 DX country** during the ARRL DX SSB contest on March 4th when I worked **V51C Namibia** operated by Ian #32960 (ex ZS9IS). He was working the contest from his home in Walvis Bay on 28470 at 1415Z. You may remember that Walvis Bay was a separate country until recently annexed by Namibia from South Africa. Ian has been a good supporter of 10-10 giving out his number when asked during pileups. Ian has operated from ZS0 Penguin Isl. which is also now Namibia. QSL Ian Sutherland, Box 2327, Walvis Bay, Namibia, Africa.

The count of **10-10 Countries** should be 271 now that activity from **V5 Namibia** has been found. My research has determined that another station from Namibia was first issued a number in September 1990 to **V51BG Karl #25980**. I would like anyone's DX worked list to make the DXCC list more accurate. I have updated my DXCC list and copies are available for an SASE and 2 stamps.

In my last article I reported that **OA4SS** may operate from HV3SJ, the Vatican, but at this time I have no reports of Father Schmidt operating from HV3SJ. I have reports of CW activity on the higher bands from the Vatican but nothing on Ten. Father Schmidt was expected to leave on March 25th so if any of our European members can verify they worked him I would appreciate hearing the details.

received 10-10 country #236 when he sent me his QSL. Richard put his call sign on a postcard which doubles as his QSL card and for his missionary work. He wrote my QSL info on a piece of paper and placed it inside the folded postcard. This is a poor excuse for a QSL card and I am not sure if it will be acceptable by the ARRL. Since TG is not on the DXCC restricted list, it should be OK. I hope he can change his card or print a QSL card. His address was in the last issue.

Feature DX Station:

ZS6JHS S Africa by Johan #61509 was worked in late February and has 270 confirmed countries on various bands. He needs three states on 80 meters to complete his 5 BDXCC but he said Alaska will be a tough one to get! On Ten meters he has 131 countries confirmed with over 40 QSL cards out. Presently he needs the following four states for WAS 10-10: Maine, Montana, Nevada & Vermont. If you can help him please look for Johan on 28425 at 1600Z. He is in the Diplomatic corp and his work may allow him to operate from Angola D2 and Nigeria 5N later this year. Johan likes to operate mobile with a Kenwood TS50 in his 4x4 vehicle and he has a nice Icom 781 at his home station with an amplifier running 400 watts to a KT34XA beam antenna up 70 feet. At his work he has the uses of a log periodic and a 400 watt Icom station with Packet radio for messages. He told me it is very difficult to work DX from ZS due to skip patterns. I expect Johan will complete 1010 WAS, 5BDXCC and in a few more years Honor Roll. QSL Johan Sevenster, POB 5561, Pretoria 0001, South Africa.

Congratulations to VP2VF Dirk #63440 in the Br. Virgin Isl. did a first class job during the **Winter QSO Party**. His 714 contacts for 1217 points should be good enough for **first place** as I had no reports of anyone else scoring higher! QSL Dirk Jong, Box 137, Road Town, Tortola, Br. Virgin Island.

VP8SGP South Georgia Isl. by **WA4VQD Jan #13423** and others put on an excellent Dxpediton to start off the year with over 18,000 contacts. Poor propagation and the mountain ridge around the whaling station where they operated, yielded less than 2,000 contacts on 10 - 17 meters! They began their activities on January 4th and stopped on the 15th. They had to cut short their stay by 4 days due to a scheduling problem with the ship. They then traveled to the Falkland Isl. Weather was not a factor as temps ranged from the 20-30's F and winds ranged from 30 to 65 mph. QSL to W4FRU callbook address with SASE.

Propagation: Solar flux will average **72-91** in the
.....continued on page 11

TG9ITH Guatemala by Richard #64671. I

TenX DX News

continued from page 10

Spring/Summer 95 which should be the lowest average of this Solar cycle. As I write this the **Solar flux** is **76**, the **A index** **20** and **K index** **6**, down from **84**, **2** and **0** just four days ago. Expect flux dips to **68**, high **A** indexes greater than **20** and the **K** index greater than **5**, will occur **30%** of the time. For stations in the US, expect a **10%** chance of DX propagation to be East-West paths into Europe & Asia and a chance into Africa. For stations in S.America, expect a **50%** chance of DX skip into Europe and Asia. Expect **sporadic E Layer** conditions to be one hop skip with fading, when long DX skip is not open and this will last **12-20** months until the next solar cycle hopefully begins in 96. Remember to listen for the **beacons (28.2-28.3)** when you want to check band conditions.

555 DX Net Sunday on 28.555 at 1400-1530 UTC: has closed until better band conditions in November 1995.

PZ5JR Surinam by Bob #39926 was on 28360 at 1900Z working the US in a contest when we swapped numbers. His QSL manager is K3BYV.

L37N Argentina by Carlos #25994 (**LU2NI**) was very active in the ARRL DX SSB contest. He told me he made over 3200 contacts and 210 multipliers on all bands. Last year he used the call **LR0N**. QSL to Carlos Meneclier, Melvin Jones 696, 4200 Santiago del Estero, Argentina.

ZD7CRC St. Helena Isl. by Chuck #63447 was active in the ARRL DX SSB contest when we swapped numbers. He is working on **WAS** so please help him if possible.

ZS6SCI South Africa club station by Ken **ZS6NB** #63494 and several other Spring Bok members, keep 28425 active daily. **ZS6AQS** Don, **ZS6CRT** Don, **ZS4AE** Franz and **ZS6ATN** Alfred were on frequency the last time I checked in. Ken reports average skip conditions into Europe several time a week. QSL each station to his callbook address.

P4/KA3DBN Aruba by John #25754 will be active from several islands in March. Look for him as **PJ7/KA3DBN Anguilla**, **VP2EBN St. Martin**. QSL callbook.

4K9W Azerbaijan by Vlad (ex **UD6DKW**) #55512 has recently sent a package of QSL cards to **DL6KVA** Alex for distribution. Vlad is a good CW operator, I found him on 20 meters recently, 14020 at 400Z. QSL to **DL6KVA**.

TG/KA9FOX Guatemala by Scott #31122 was planning to use the station of **TG9GI** but changed his plans. He did use the call **TG0AA** besides his portable call. QSL callbook.

VS6CT Hong Kong by Phil #18476 is off the air while he moves his QTH until late 95. Look for him in Dayton. He expects to settle in Hong Kong but plans are not firm yet.

Upcoming Dxpeditons:

9M0A/1S Spratly Isl. by a group of JA and Malaysian ops will be active the first of April. Only one operator has a number so find him for a **new 10-10 country!**

I1YRL Italy by Luc #58966 will be active from **4U1ITU** in March 11-12 & 25-26, May & September 95 and from **3A** (Monaco) in April, June & September 95. QSL to Glarey Luc, Via S. Martino 11, 10091 Alpignano, Torino, Italy.

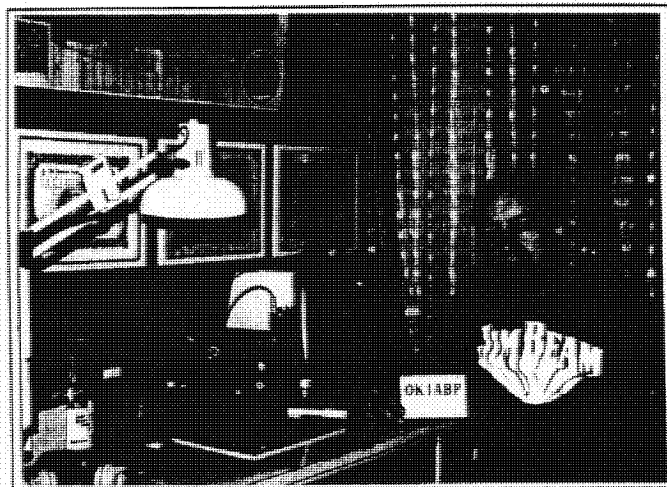
KP1/W5IJU Navassa Isl. by Vance #63352 and **KB4VLO** David #60721 could be active from the island with three other operators. Expected date late-April or early-May.

DL1XAQ by Mark #64617 and **DL9XAT** by Ralf #63465 will be in the Caribbean during late March and early April. They will be on **J8 St.Vincent NA-109**, **Mustique Isl. NA-025**, **J6 St.Lucia NA-108**, and **FG Guadeloupe NA-102**. This team was suppose to go to **9H Malta** but recent info indicates their plans have changed to the Caribbean.

10-10 ISLANDS ON THE AIR (IOTA):

EU-167 Pessegueiro Isl. by **CT1EEB/P** Jose #58967, QSL to **WA1ECA**. **NA-037 Shemya Isl.** by **KL7FBI** #06808. **NA-135 Carmen Isl.** by **XE1BGM/3** Bernardo #20325. **SA-012 Margaritia**

.....continued on page 19



Jiri Havel, **OK1ABP** #54280
in his shack in Czechoslovakia

10-10 SILENT KEYS

It is with sorrow that we note the following 10-10 members who are now SILENT KEYS. We extend our sincere condolences to the families and friends of these SK members whose calls and 10-10 members will forever be kept in the records of the 10-10 Net.

| | | | | | |
|-------|--------|---------------------------------------|-------|--------|-------------------------------------------|
| 00788 | W5EVB | I. D. Sutherland, Wichita Falls, TX | 29492 | W5EOH | Marion H. Marshall, Dallas, TX |
| 00912 | W9LSF | Paul H. Eggimann, Mount Horeb, WI | 29539 | WD8EFD | Russell Shuster, Wellington, OH |
| 01867 | WB9ALX | Milton H. Sorg, Fremont, IN | 29747 | W4LBW | Robert C. Hainsworth, Richmond, VA |
| 02284 | W4PJF | Albert C. Hodson, South Casco, ME | 29910 | W6NJG | Ed McElheney, Antioch, CA |
| 03173 | W7ZKL | Paul W. Woods, Salt Lake City, UT | 30113 | W4FRL | Leo F. Servary, David, FL |
| 03388 | W8JYG | Harry O. Caulk, Greenville, MI | 31372 | K1HNB | George C. Class, Vernon, VT |
| 05286 | WB5UYN | Kenneth Bell, New Orleans, LA | 31408 | W7ULC | Jerry Skaife, La Grande, OR |
| 05404 | WB4JRL | John F. Ingram, Jr., Decatur, GA | 32040 | K4JZZ | Lloyd Quick, Hobe Sound, FL |
| 05910 | W4NEI | Samuel H. Simmons, Windermere, FL | 32148 | KA3EAO | Thomas S. Austin, Clinton, MD |
| 06298 | WA9MFP | Robert R. Webber, Bloomington, IL | 32207 | KC5NA | Joseph E. Griffie, Irving, TX |
| 06909 | W7FFJ | Otto E. Aschoff, Oregon City, OR | 32314 | N4FJL | Thomas Schreckengost, Lake Worth, FL |
| 06920 | KF0PT | Charles J. Restall, Rochester, MN | 33262 | W4NOI | John E. Knight, Pasadena, CA |
| 07104 | W3YNT | Carl C. Roberts, Johnston, PA | 33973 | NT1N | Albert R. Varney, Rochester, NH |
| 07372 | W4YSB | Leroy C. Tyack, Glenwood Springs, NC | 34864 | W2VPL | James Martin, Jr., East Brunswick, NJ |
| 08913 | W7JMA | Luis E. Crowe, Carson City, NV | 35317 | K1IWH | Stanley M. Kenerson, Jr., Springfield, MA |
| 09185 | W5SWH | William G. Heilman, Flippin, AR | 35767 | WT4Z | Daniel Wilson Wingate, Belmont, NC |
| 09254 | WB5CPA | Clyde L. Ward, Washington, OK | 35888 | KA5DUE | Jesse P. Reed, Roswell, NM |
| 09572 | W9KSR | Donald S. Getchell, Camby, IN | 36496 | W4KVR | Delbert R. Dayton, Winter Haven, FL |
| 10261 | W4TJS | Andrew J. Farr, Jonesboro, GA | 36781 | K7TAW | Tohle S. Kane, Olympia, WA |
| 10905 | W0FBB | Rudolph E. Veverka, Omaha, NE | 38028 | WB5KGZ | John Irving, Philomath, OR |
| 10957 | WA6HAD | Gene R. Signor, Los Gatos, CA | 39030 | WG6Y | Warren Ross Walker, Lakeport, CA |
| 11981 | WA0BBA | Richard Keas, Pueblo, CO | 40080 | WN5D | Claud L. Branch, Tulsa, OK |
| 12074 | W1FRZ | Donald E. Hinds, Stoughton, MA | 40143 | AF6E | Richard A. Peterson, Mt. Vernon, AL |
| 12474 | K4XA | John G. Crosby, Albany, GA | 41001 | NA3Z | Richard B. Morgan, Pocomoke City, MD |
| 15792 | KJ6YZ | Oliver Borns, Jr., Modesto, CA | 40720 | WB4JMW | Walter L. Ford, Bristol, TN |
| 17060 | WB9RFT | Anthony V. Schroder, Des Plaines, IL | 41092 | K3RHL | Roy Seccomb, Clinton, MD |
| 17358 | KB6Q | Alan L. Abrams, Belvedere, CA | 42635 | WE0K | Richard L. Murphy, Byron, MN |
| 17635 | WA4JDH | Harris Winston, Elba, AL | 42810 | KB6HVA | Marshall A. Tinsley, Altamont, UT |
| 18001 | WB6PHZ | Brewer Cox, Redding, CA | 42857 | KE0SF | Maurice K. Warner, Allen, NE |
| 19445 | WD0AWO | Clayton D. Cesar, Hinkley, MN | 43681 | AA5MF | Francis C. Jacobs, Pottsboro, TX |
| 19544 | KF0O | Warren J. Kuhn, Kansas City, MO | 44328 | WD0DEA | Kenneth K. Conner, Fergus Falls, MN |
| 21344 | AA0GH | Joseph G. Saetveit, New London, MN | 45156 | N2HQX | Ernest D. Jackson, Pennsauken, NJ |
| 22503 | WB3KHD | Leon Picon, Bethesda, MD | 45198 | KB2EJW | Charles W. Runte, Somers Point, NJ |
| 23680 | K5TYV | Everett G. Reed, San Antonio, TX | 45423 | K8CLC | Carl M. Tucker, Coshocton, OH |
| 24792 | W4PNQ | Spencer W. Price, Sebring, FL | 45691 | N5JLO | Allen T. Cruttenden, Albuquerque, NM |
| 25407 | W1IAO | Hubert V. Nordholm, Greenwich, CT | 46518 | WA5UUQ | Curtis M. Hopson, Victoria, TX |
| 26707 | WA4YVW | Robert J. Illig, Florence, KY | 47742 | WB8TXD | Robert H. Jones, Newark, OH |
| 26927 | KA7C | Sidney A. Strong, Eugene, OR | 47762 | N8FOF | Louis A. Pavlichek, Livonia, MI |
| 27311 | VK3NLO | Joan Sutherland, Bendigo, Vic., Aust. | 48737 | N0OVN | David G. Hackett, Traer, IA |
| 27525 | N5APB | Thamar Dickerson, Mauriceville, TX | 49204 | KA0QGW | John Snider, Scott City, MO |
| 27679 | W2IR | William G. Broughton, Schenectady, NY | 49514 | KC4EDW | William G. Schmidt, Aiken, SC |
| 28136 | K1MZN | Owen L. Borland, Central Falls, RI | 49628 | WB9HPR | Charles W. Lenhart, Hanover, IN |
| 28210 | W0HSV | Harold E. Reid, Cedar Rapids, IA | 50703 | W4WLA | William H. Reinoehl, Gulf Breeze, FL |
| 28368 | KD4E | Gerald A. Hutchinson, Charlotte, NC | 53495 | K3OEN | Harry S. Eberly, Ephrata, PA |
| 28568 | WD8EGV | Art Shelf, Utica, MI | 53693 | KC4LWY | Thomas G. Perry, Toxaway, NC |
| 29314 | WA2UUY | Carl Wendroff, Parlin, NJ | 54362 | AB4UO | Glenn D. Davis, Kingsport, TN |
| 29436 | KJ5C | Aiwanda M. Clark, Oklahoma City, OK | 54606 | NY3W | Thomas Lochrie, Portland, OR |
| | | | 55482 | H18MEQ | Manuel E. Pacheco, Santo Domingo, DR |
| | | | 56626 | WB8WOZ | Edwin W. Patterson, Wyoming, OH |
| | | | 58437 | KI5OC | Margaret E. Burks, Hodgen, OK |
| | | | 60300 | KB6ZZF | Harvey F. Richt, Tuscon, AZ |
| | | | 61925 | KD3HI | Ira H. Cole, Dunbar, PA |
| | | | 64798 | W4SRK | John H. Rhodes, Orlando, FL |
| | | | 65147 | KE4DVJ | Douglas E. Thorp, Lanexa, VA |

Chapter Coordinators Column

Joyce Medlen
KE4KGB #66157

Affiliated....None

Reaffiliated....None

No Longer Affiliated....

Northwest Florida, River City, Speedway, War Eagle, and MI Water, Wonderland....no reports for 15 months.

In Extremis....Report by June 5, 1995....Anthracite Breaker, Bauxite, City of Lights, Golden Spike, Iowa River Valley, Minuteman, Starlite, Texas Gamblers, and Thunderbird.

What's New?....Something Old, Something New, with this issue of the NEWS....The Old Awards Guide is out of print. The New Guide should be published in late spring. CH/CM need to get their changes to me no later than 30 April, 1995. When ordering the Guide, make the check/money order out to 10-10 International.

Cliff Dweller and Columbine YL....Effective immediately these two Chapters are no longer offered to PC's (paper chasers). Nets will continue as scheduled. Certificates will still be available to collectors. Chapter history accompanies certificates. Both certificates come together for \$2.00 US or DX 2FCS donations.

TWENTY EIGHT....Revision of their program is in progress and will be out soon. When working them don't forget to ask about the "Royal Flying Doctor Service" award. Its not 10-10- affiliated but they offer a nice certificate each year. Their new CH is Brian Kirby 33, Mary Crescent, Eden Hill, W.A. 6054, Australia.

GB Ten....Leap Year Special, find the only station whose certificate is dated 29/2/92, a 10 point bonus is available. This special will close 31/12/95. 4K Challenge Game of Snooker, due to poor propagation possible revision of rules of entry

will be valid for two weeks. Also, each one found will be worth 10 points this season. This is a test bed for future specials, so enter even though you worked this one only once.

Broken Hearts....Beautiful enameled pins are now available for Broken Hearts chapter members. Send \$3.00 US, \$5.00 DX to CM K4CIH. This will cover cost and mailing. Pins will also be available at the convention.

IOTA....Island collectors...Maine-lacs are #NA-055, as well as low VP#19, while FF/RP hold #NA-036.

UAHOG....Two specials will be given in 1995, one will be an Independence Day special and the other will be at Christmas. For more information contact CM.

ELECTRIC CITY....This chapter will no longer issue seals and or numbers at conventions (Dayton, Reno, Las Vegas etc.) Instead you will receive a sheet of paper that will, when returned with your upgrade, give you plus 5 for ordinary get together (Dayton, Reno, Las Vegas); and a plus 10 for International convention, such as Tuscaloosa.

FT MCHENRY....New certificate...W3FQN Memorial Award is now being offered. The certificate is to be printed on parchment paper. Contact CH/CM for full details.

ALI's....Their WAS program is still going strong. Collect Alii chapter certificate numbers from each state worked. Contacts are not retroactive. Mobiles from another state with an Alii Chapter number, driving through a state, can be used for that state. However, the mobile can be used only once. Wild Cards can be used also. This will offer 50 additional points to your current point total when completed and submitted.

OTHER NEWS....New CM, ALL AMERICA CITY is WA4FAT, BAY AREA is WB6RDK, CHIEF SEATTLE is W7JNB and ARIZONA SUNSET is WB8JET

REMINDER TO CHAPTERS...To remain affiliated with 10-10, all chapters must file a quarterly report at least once a year. This information is printed in the 10-10 Awards Guide and in the monthly Guide updates. We do not want to have our members

.....continued on page 14

Chapter Coordinators Column

continued from page 13

waste their time and or money to support a chapter that is no longer active.

I must have my report in to the editor of the NEWS by the 15th of March, June, September, and December. If you want to see information about your chapter in this column, I must receive your information by the 5th of those months. Chapter information is printed on a space available basis, and sometimes we can't print everything we receive. If you want to be sure the information in the 10-10 Awards Guide is accurate, you should send me a current copy of your membership requirements as I can only print what information I have.

Presidents Message

continued from page 3

ventions at 205/752-3200. Be sure to tell them you are with the TEN-TEN group. Remember there are only a limited number of rooms available.

More items about the convention. The dates are 16 and 17 June, 1995, and the place is Tuscaloosa, AL. You may arrive and register after 5 PM on the 15th of June. The regular Board of Directors meeting will be held on Friday, 17 June. There will be a short informal meeting of the Board on Thursday night. There have been some flyers sent to members with the wrong dates and this should correct that. We plan a full day of forums on Saturday, 17 June, and close out the convention with a banquet on Saturday night. Friday, 16 June will be a day of "eyeballs" and getting to know one another. Those of you planning to attend the banquet, please let me know before 1 June, so I can put the plans in motion.

Now to a little more serious area. As all members are aware, or should be if you read your *News*, we have committees which help run the affairs of 10-10. Each of these committees have an area of responsibility as outlined on page 4 of the January 1995 issue of the *News*. I would be most pleased if the membership would read about the committees and their responsibilities. When you as members have questions or problems about 10-10 please address your mail and calls to the appropriate committee for quicker response. **All correspondence** concerning membership services should be addressed to the Omaha address. There is NO

phone service to our address in Omaha. This is for life membership, family membership, dues renewals, address changes, not receiving the *News*, change of call and, 10-10 stamps can be ordered here. **New memberships** go to the Area Managers. DX new memberships and renewals continue to go to K8DHK. All this information is available on the inside cover of the last page of the *News*. Area managers are for **NEW MEMBERSHIP APPLICATIONS ONLY**. The area manager can assist you with problems, but it often takes more time. The best way to resolve questions and problems is to write or call the committee responsible.

Hope to see all of you at the convention. Keep in mind that this is OUR convention. What the convention is or becomes is entirely up to you. Lets make it work.

Much thanks to Bob Young, W1MXI #17800, for deciphering Hiram Wolf's VP program disks. This will allow us to go on with the VP program. To all of you members who work the VP program, thanks for your patience while we were trying to get all of the information together. This was an unfortunate problem that will not happen again. Steps are being taken to make sure that all data in all programs is available on hard copy as well as computer. Our new VP manager, Carl Fisher, W0HIK #40678, is up and running and the backlog of VP applications are being worked down. Give Carl a chance to get caught up.

.....Best 73's Tom Henderson, K4CIH #33233

Wanted

The Colorado Bighorn Museum of Amateur Radio, operated by Don Zielinski, K0PVI #9902, needs Amateur Radio Callsign License Plates from the following states to complete a **Worked all States Display** in the museum. This is your chance to have your state (and your call) represented in The Museum for posterity. States needed to complete the WAS exhibit are:

| | | | | |
|----|----|----|----|----|
| AZ | AR | CT | DE | GA |
| ID | LA | MS | NV | NM |
| OK | PA | RI | SC | SD |
| UT | WA | WV | WI | |

Plates of any year, call or condition will be acceptable. If you have an old callsign license plate from any of the above states, send them to The Bighorn Museum, PO Box 229, Byers, CO 80103-0229. Your postage will be reimbursed if you desire.

Honor Roll

SCHOLARSHIP FUND VOLUNTEERS

The following 10-10 members have become a **Scholarship Fund Volunteer** by making a donation to the 10-10 Scholarship Fund. They will each receive a *Certificate of Appreciation* for their contribution.

| | | |
|-------|--------|----------------------|
| 04189 | W6EHM | Morrie Goldman |
| 06090 | WB2SJQ | Marvin L. Hagan |
| 06894 | W9WYN | Jack O. Miller |
| 18807 | AD5F | Jim Ferguson |
| 19636 | W6YLJ | Chuck Imsande |
| 53830 | WA2IKS | Gerald D. Fox |
| 56860 | KA3WWG | Mary Jane Herrington |

Mary Jane Herrington made her donation in memory of Ken Gardner, N7LQS #47695, who became a SK in 1994. He was a member of the Springbok Chapter in which Mary Jane belongs.

Marvin Hagan, WB2SJQ #06090, made his donation in memory of Paul Woods, W7ZKL #03173, who recently passed away. Paul leaves behind many friends both in radio and other aspects of life. Paul and Marvin go back many years in 10-10.

Jack Miller, W9WYN #06894, made a donation to the Scholarship Fund on the anniversary of his joining 10-10 on November 27, 1972. Jack suggests that each member contribute at least \$1.00 for each year of membership.

You also could become a *Scholarship Fund Volunteer* by sending your contribution to: Morrie Goldman W6EHM #4189, Scholarship Manager, 21518 Marjorie Avenue, Torrance, CA 90503-6418. Make your check payable to: 10-10 Scholarship Fund. You will receive a *Certificate of Appreciation FOR THE YEAR 1995* as an appreciation of your contribution.

VP Certificate

It has been noted that an omission exists in the **INTERNATIONAL 500 OF THE WORLD** write-up on page 30 of the *News*. The **VP CERTIFICATE** costs \$1.00 + 2 first class stamps. The certificate is optional, but if you desire the certificate, enclose \$1.00 and 2 FCS with your application for the 500 BAR.

STATION OF THE MONTH

By BOB RYAN, K6YVG #18022

The feature **STATION OF THE MONTH** has returned to the *News* and appears in this issue on page 25. The **STATION OF THE MONTH** will be written each issue by our Director Bob Ryan, K6YVG #18022. If you would like to have your station considered as the 10-10 **STATION OF THE MONTH**, send a detail information sheet about yourself and your station, along with a picture, to Bob at 26409 Doveweed Way, Santa Clarita, CA 91350-2647.

Stations selected and published in the *News* will receive a handsome certificate suitable for framing and hanging on the ham shack wall.

Are you "On Line"?

Many of the 10-10 Net Officials are coming "on line" with America-On-line, Prodigy or have access to the Internet. If you have access to E-Mail through one of the on-line services, send your address to Ed Redwine, K5ERJ #11843, at: k5erj@aol.com. Ed is compiling a listing of all 10-10 members who have E-Mail capability. A listing will be available soon from Ed for a SASE (#10 business size).

The Officers who are on E-Mail have found the service to be a great way to communicate on an almost instant basis, and saving of postage is a definite advantage with the new rates.

Changing Face of US Ham Radio

Amateur Radio Growth - Last 10 Years

Ten years ago, most amateurs held General and higher class tickets. The majority of amateurs today hold Novice and Technician ham radio licenses.

| Class | 1984 | 1994 | Increase |
|------------|--------|--------|----------|
| Novice | 80461 | 93797 | +16.6% |
| Technician | 79950 | 235484 | +194.5% |
| General | 116084 | 124589 | +6.7% |
| Advanced | 97084 | 111587 | +14.9% |
| Extra | 35624 | 65942 | +85.1% |
| Total | 409923 | 631399 | +54.0% |

-W5YI REPORT

10-10 NET GUIDE

Current as of 1 March 1995

| ZDAY | ZSUM | ZWIN | CHAPTER | LOC | FREQ. | ZDAY | ZSUM | ZWIN | CHAPTER | LOC | FREQ. |
|------|------|------|--------------------------------|-----|-------|------|------|------|-------------------------------|-----|-------|
| ALL | | 0001 | OMAHA ZERO NET* | NE | 28400 | MON | 0200 | 0300 | SKY BLUE WATERS* | MN | 28325 |
| ALL | 0030 | 0130 | NORTHWEST FLORIDA | FL | 38375 | MON | 0230 | 0330 | GOLDEN BEARS | CA | 28485 |
| ALL | | 0030 | SC GOLDEN* | SC | 28429 | MON | | 1700 | BERLIN BEARS | DL | 28810 |
| ALL | 0300 | 0400 | CHIEF SEATTLE | WA | 28625 | MON | | 1730 | EAGLE WATCH | AL | 28317 |
| SUN | 0001 | 0100 | CLIFF DWELLERS | CO | 28883 | MON | | 2230 | CHIEF ANDERSON | IN | 28785 |
| SUN | 0200 | 0300 | PIRATES MISS (ALT)* | IL | 28395 | MON | | 2300 | PLATTE RIVER | NE | 28460 |
| SUN | | 0210 | TWENTY-EIGHT (1st) | VK | 28560 | MON | | 2359 | BEAVER VALLEY | PA | 28480 |
| SUN | | 0830 | TWENTY-EIGHT (2nd) | VK | 28560 | MON | | 2359 | ERIE EXTENSION CANAL | PJ | 28330 |
| SUN | | 0800 | MONT VENTOUX | F | 28725 | MON | 2300 | 2359 | MI WATER WONDERLAND | MI | 28343 |
| SUN | 0700 | 0800 | PHONE ALPES | F | 28440 | MON | | 2359 | SANTA FE TRAIL | IN | 28695 |
| SUN | 0830 | 0930 | BORINAGE | ON | 28785 | MON | 2300 | 2359 | TROTTERS & PACERS | NJ | 28755 |
| SUN | 1400 | 1300 | FT McHENRY/YD KRITCH | MD | 28840 | M/T | 2330 | 0030 | ELECTRIC CITY | FL | 28450 |
| SUN | 1300 | 1400 | MANCINIUM/ LNC/PW/GB10 | G | 28860 | M/T | 2330 | 0030 | CHIEF KILLBUCK | OH | 28490 |
| SUN | 1300 | 1400 | ARLINGTON | VA | 29200 | TUES | | 0001 | WHITEHOUSE | | |
| SUN | | 1500 | LAKE GENEVA | HB | 28416 | | | | 11 SEPT-10 OCT | DC | 28475 |
| SUN | 1500 | 1600 | PIRATES MISSISSIPPI* | IL | 28395 | TUES | | 0030 | SKY BLUE WATERS | MN | 28355 |
| SUN | 1500 | 1600 | MARDI GRAS | LA | 28433 | TUES | | 0100 | WHITEHOUSE | | |
| SUN | | 1600 | PLATTE RIVER | NE | 28750 | | | | 23 OCT-10 SEPT | DC | 28475 |
| SUN | | 1600 | SPRINGBOK | ZS | 28425 | TUES | 0100 | 0200 | COLORADO CENTENNIAL | CO | 28340 |
| SUN | 1500 | 1600 | STARK COUNTY MUTUAL AID CW | OH | 28150 | TUES | 0100 | 0200 | THUNDERBIRD | AZ | 28475 |
| SUN | 1545 | 1645 | STARK COUNTY MUTUAL AID SSB | OH | 28800 | TUES | 0130 | 0230 | BAUXITE | AR | 28470 |
| SUN | 1600 | 1700 | SKY BLUE WATERS | MN | 28325 | TUES | 0130 | 0230 | CITY OF LIGHTS | IL | 28720 |
| SUN | 1600 | 1700 | LAND-O-LINCOLN | IL | 28380 | TUES | 0200 | 0300 | PIRATES MISSISSIPPI* | IL | 28395 |
| SUN | 1630 | 1730 | STEEL CITY | IN | 28420 | TUES | 0230 | 0330 | CITY OF ROSES | OR | 28450 |
| SUN | 1630 | 1730 | POSSOM TROT | NC | 28345 | TUES | 0300 | 0400 | BAY AREA | CA | 28475 |
| SUN | 1800 | 1900 | BROOKLYN BRIDGE | NY | 28850 | TUES | 2200 | 2300 | PESHTIGO FIRE | WI | 28360 |
| SUN | 1800 | 1900 | COLORADO BIGHORN | CO | 28740 | TUES | | 2359 | CHATTANOOGA | | |
| SUN | 1800 | 1900 | LIARS/LINDBERG/ METRO | NY | 28850 | TUES | 2259 | 2359 | CHOO CHOO | TN | 28380 |
| SUN | 2000 | 1900 | CHOCTAW BAY | FL | 28473 | | | | FT McHENRY/ YDR KRITCH | MD | 28370 |
| SUN | | 1900 | PARROT | MI | 28820 | TUES | 2300 | 2359 | GREAT LAKES | AZ | 28480 |
| SUN | | 1900 | NORTH STAR 49'ER | AL | 28350 | T/W | 2330 | 0030 | NUTMAG (SO. N.E.) | CT | 28690 |
| SUN | | 1930 | BLUE & GRAY | KY | 28760 | T/W | 2330 | 0030 | REPUBLIC OF TEXAS | TX | 28560 |
| SUN | 1830 | 1930 | TWIN TIERS/CHENANGO | NY | 28805 | T/W | 2330 | 0300 | MINUTEMAN | MA | 28409 |
| SUN | | (1) | TWIN TIERS/CHENANGO | NY | 28335 | WED | 0001 | 0100 | BLUEBONNET | TX | 28625 |
| SUN | 1930 | 2030 | GOLDEN SPIKE | UT | 28425 | WED | | 0100 | C.A.T.T. | OH | 28800 |
| SUN | 2000 | 2100 | TEXAS GAMBLERS | TX | 28333 | WED | | (1) | C.A.T.T. | OH | 28490 |
| SUN | 2030 | 2130 | AIR CAPITOL | KS | 28775 | WED | 0001 | 0100 | CASTLE CRAIG | CT | 28375 |
| SUN | 2100 | 2200 | AMERICAN EAGLE | VA | 28430 | WED | 0001 | 0100 | GRINNING ARMADILLO | TX | 28480 |
| SUN | | 2200 | ARIZONA SUNSET | AZ | 28475 | WED | 0030 | 0130 | ALL AMERICAN CITY | AL | 28400 |
| SUN | 2100 | 2200 | POSSOM TROT CW | NC | 28150 | WED | | 0130 | STEEL CITY | IN | 28420 |
| SUN | 2200 | 2300 | SO TX LIGHT HORSE BRIGADE | TX | 28345 | WED | 0300 | 0130 | WIREGRASS PNUT PKRS | AL | 28535 |
| SUN | 2300 | 2359 | ARLINGTON | VA | 29200 | WED | 0100 | 0200 | ANTHRACITE BREAKER | PA | 28660 |
| S/M | 2300 | 0030 | MICHIANA | MI | 28465 | WED | 0100 | 0200 | GREAT SMOKY MTN | TN | 28700 |
| S/M | 2330 | 0030 | MINUTEMAN CW | MA | 28150 | WED | 0100 | 0200 | HOUSTON SHOT | TX | 28488 |
| MON | | 0001 | OMAHA ZERO NET* | NE | 28400 | WED | 0100 | 0200 | SAMUEL CLEMENS | CT | 28333 |
| MON | | 0100 | CRADLE OF LIBERTY | PA | 28695 | WED | 0100 | 0200 | BOOMTOWN ALT.* | TX | 28402 |
| MON | 0001 | 0100 | MISS LIGHTHOUSE | MS | 28405 | WED | 0200 | 0300 | TEN BAR X | TX | 28440 |
| MON | 0001 | 0100 | NUTMEG (SO. N.E.) | CT | 28690 | WED | 0300 | 0400 | E.A.T.T. | VE | 28520 |
| MON | | 0130 | CRADLE OF LIBERTY | PA | 28425 | WED | 0330 | 0430 | SPEEDWAY | OR | 28450 |
| MON | 0100 | 0200 | ANTHRACITE BREAKER | PA | 28660 | WED | | 1500 | LAKE GENEVA CW | F | 28185 |
| MON | 0100 | 0200 | LONE STAR | TX | 28460 | WED | | 2200 | COLUMBINE/ CLIFF DWELLER | CO | 28377 |
| MON | 0100 | 0200 | MILWAUKEE | WI | 28365 | WED | 2200 | 2300 | PEACH STATE INT. | TX | 28420 |
| MON | 0130 | 0230 | BAUXITE | AR | 28470 | WED | 2300 | 2359 | IA RIVER VALLEY / STARLITE | IA | 28355 |

10-10 NET GUIDE

Current as of 1 March 1995

| ZDAY | ZSUM | ZWIN | CHAPTER | LOC | FREQ. | ZDAY | ZSUM | ZWIN | CHAPTER | LOC | FREQ. |
|------|------|------|-----------------------|-----|-------|---------|------|------|--------------------------|-----|-------|
| WED | 2300 | 2359 | OLD DOMINION | VA | 28470 | SAT | | 1600 | DOLL CHASERS | TX | 28433 |
| WED | 2300 | 2359 | TEXAS GAMBLER | TX | 28333 | SAT | 1500 | 1600 | MO-KAN TENNERS | MO | 28440 |
| W/T | 2330 | 0030 | MI ROBINS | MI | 28800 | SAT | 1500 | 1600 | REPUBLIC OF TEXAS | TX | 28460 |
| W/T | | (1) | MI ROBINS | MI | 28493 | SAT | 1500 | 1600 | MOKAN* | MO | 28440 |
| W/T | 2359 | 0059 | BATTLE ROAD | MA | 28390 | SAT | 1530 | 1630 | RONE ALPS | F | 28440 |
| THU | 0001 | 0100 | CYPRESS | FL | 28665 | SAT | 1600 | 1700 | CITY OF ROSES | OR | 28835 |
| THU | 0001 | 0100 | EGYPTIAN RADIO CLUB* | IL | 28420 | SAT | 1500 | 1700 | ELECTRIC CITY | FL | 28845 |
| THU | | 0100 | WAR EAGLE | IA | 28615 | SAT | 1630 | 1730 | BOOMTOWN | TX | 28402 |
| THU | 0100 | 0200 | MOKAN* | MO | 28440 | SAT | | 1730 | EAGLE WATCH | AL | 28317 |
| THU | 0100 | 0200 | FT McHENRY* | MD | 28370 | SAT | | 1730 | TANGO | LU | 28650 |
| THU | 0100 | 0200 | COWTOWN | TX | 28710 | SAT | | 1800 | CHATTANOOGA | | |
| THU | | (1) | COWTOWN | TX | 28460 | | | | CHOO CHOO | TN | 28380 |
| THU | 0100 | 0200 | CRADLE OF THE | | | SAT | | 1800 | KEYSTONE | CA | 28765 |
| | | | CONFDRCY | AL | 28350 | SAT | 1700 | 1800 | LILAC CITY | WA | 28390 |
| THU | 0100 | 0200 | GATEWAY | MO | 28650 | SAT | | 1800 | SPEEDWAY | OR | 28350 |
| THU | 0100 | 0200 | MILWAUKEE* | WI | 28365 | SAT | 1800 | 1830 | CRATER LAKE* | OR | 28760 |
| THU | 0100 | 0200 | MO-KAN TENNERS | MO | 28440 | SAT | | 1900 | RIVER CITY | CA | 28870 |
| THU | 0100 | 0200 | NORTH STAR | MN | 28432 | SAT | 1830 | 1930 | AFTERSHOCK | CA | 28340 |
| THU | 0200 | 0300 | BLACKHAWK VALLEY | IN | 28925 | SAT | 1900 | 2000 | ALASKA IDITAROD | AK | 28849 |
| THU | 0230 | 0300 | WIND FARMS | CA | 28485 | SAT | 1900 | 2000 | OUTLAWS (1st) | TX | 28444 |
| THU | 0300 | 0400 | CHIEF SEATTLE | WA | 28425 | SAT | 1900 | 2000 | OUTLAWS (2nd, 3rd, 4th) | TX | 28644 |
| THU | 1300 | 1400 | MANCUNIU/ | | | SAT | | 2000 | FELINE FRIENDS/ | | |
| | | | LANC/PQ/GB | G | 28870 | | | | RESTORATION PROJ. | VE | 28747 |
| THU | 1800 | 1700 | FT McHENRY | MD | 28370 | SAT | | 2000 | NIANTIC BAY (with above) | CT | 28747 |
| THU | 2200 | 2300 | DELAWARE VALLEY | PA | 28360 | SAT | | 2100 | WAR EAGLE | IA | 28600 |
| THU | 2300 | 2359 | HUDSON VALLEY | NY | 28595 | SAT | | 2200 | ALLIS | HI | 28730 |
| T/F | 2359 | 0100 | OCEAN STATE | RI | 28390 | SAT | | 2330 | CITY OF MELBOURNE | VK | 28355 |
| T/F | 2359 | 0100 | CERTIFICATE CHASERS | NY | 28355 | SAT | | 2330 | IMPERIAL DRAGON | VK | 28355 |
| FRI | | 0100 | C.I.R.R.N. | NY | 28380 | SAT | | 1800 | 10-10 INTERNATIONAL | CA | 28800 |
| FRI | 0001 | 0100 | CRAZY EIGHT | PA | 28388 | M-W-F-S | | 1800 | 10-10 INTERNATIONAL | CA | 28380 |
| FRI | | 0100 | OKIE RELAYS | OK | 28380 | | | | | | |
| FRI | 0001 | 0100 | MUSIC CITY | TN | 28495 | | | | | | |
| FRI | 0001 | 0100 | RED RIVER (STEAMBOAT) | LA | 28430 | | | | | | |
| FRI | 0001 | 0100 | SO TX LIGHT HORSE | | | | | | | | |
| | | | BRIGADE | TX | 28488 | | | | | | |
| FRI | 0001 | 0100 | SUNCOAST | FL | 28420 | | | | | | |
| FRI | 0100 | 0200 | DALLAS COWBOYS | TX | 28580 | | | | | | |
| FRI | 0100 | 0200 | GREAT SMOKY MTN | TN | 28700 | | | | | | |
| FRI | 0100 | 0200 | LAND-O-LINCOLN | IL | 28650 | | | | | | |
| FRI | 0130 | 0230 | LAND-O-LINCLON (ALT) | IL | 28380 | | | | | | |
| FRI | 0200 | 0300 | AFTERSHOCK | CA | 28340 | | | | | | |
| FRI | 0200 | 0300 | APPALACHIAN MTN | KY | 28400 | | | | | | |
| FRI | | 2230 | DOWN UNDER | ZL | 28530 | | | | | | |
| FRI | | 2300 | BRANDING IRON | TX | 28345 | | | | | | |
| FRI | 2300 | 2359 | BROOKLYN BRIDGE | NY | 28580 | | | | | | |
| FRI | 2300 | 2359 | LIARS/LINDBERG/METRO | NY | 28850 | | | | | | |
| SAT | | 0001 | SAF | UA | 28760 | | | | | | |
| SAT | 0001 | 0100 | FT McHENRY/ | | | | | | | | |
| | | | YDR KRITCH | MD | 28370 | | | | | | |
| SAT | 0001 | 0100 | LAND OF LEGEND | OH | 28390 | | | | | | |
| SAT | 0001 | 0100 | MAINE-IACS | ME | 28402 | | | | | | |
| SAT | | 0100 | OKIE RELAYS | OK | 28633 | | | | | | |
| SAT | 0001 | 0100 | SKIP JACK | MD | 28525 | | | | | | |
| SAT | 0300 | 0130 | WIREGRASS PNUT PKRS | AL | 28490 | | | | | | |
| SAT | | 1200 | TURIN NW DX CLUB | I | 28425 | | | | | | |
| SAT | 1330 | 1430 | TROTTERS & PACERS | NJ | 28775 | | | | | | |
| SAT | 1400 | 1500 | COFFEE CUP | LA | 28368 | | | | | | |
| SAT | 1400 | 1500 | 59/62 | F | 28780 | | | | | | |
| SAT | | 1500 | LAKE GENEVA | HB | 28416 | | | | | | |

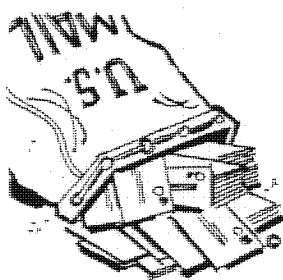
* NEW OR CHANGE
(1) AFTER SCHEDULED NET
(ALT) ALTERNATE FREQUENCY



Bob Wille, NZ5E #31049 and Cliff Swinney KF5CA #17204.
Bob, NZ5E being presented a plaque for achievement as
outgoing CM for the Dallas Cowboys Chapter.
Award presented by Cliff, KF5CA

The Mail Bag

Letters to the Editor are published at the sole discretion of the Editor. This is not a "gripe column", but rather a place for members to air ideas, offer suggestion and request answers to questions relative to 10-10. All letters published are subject to being edited. An attempt will be made to answer all questions. Send your letters to the Editor.



"I've been a 10-10'er for about 2 years now and thoroughly enjoy the fun and camaraderie of all the 10-10 activity which I have come across both here in the metropolitan area and on a national level. I have made some very fine friends through the Brooklyn Bridge and Trotters and Pacers chapters of 10-10 International. All of this is mostly through the weekly 10 meter SSB nets and the occasional SSB and CW contests.

But one aspect of HAM radio which is a favorite operating mode of mine, seems to have shown very little 10-10 activity. This has surprised me, because the potential for 10-10 activity is so tremendous. This mode of operation is PACKET RADIO.

I have been running a JNOS based packet station for some time now. I have always had a dream of linking my VHF port with a 10 meter port for my own use as well as the use of the local HAM community. I have finally scraped together the bucks necessary to do so and have successfully opened up my 10 meter link. To my great disappointment, I now find that not only is there little 10-10 activity (actually none!) but there is very little 10 meter packet activity in general. This is a great surprise to me because of the particular suitability of the 10 meter band for packet mode operating. Few HAMS realize that the 10 meter band supports full 1200 bps vhf mode communication. In fact, I have recently made connects at 1200 bps with several packet BBS's in Argentina. What little local activity I have found is running at 300 bps for some unexplained reason.

I can't speak for the rest of the country, but as for here in the NYC Metro area, the tiny amount of bandwidth dedicated to 2 meter packet radio is overflowing with traffic! During a local Sunday night digital net, the conference channel is so loaded down, that retry disconnects are a major problem. Meanwhile, 10 meters remains virtually unused.

Here is what I propose. Let's get a consensus from our 10-10 community on how many packeteers

there are out there, what mode they would prefer to operate in (300 BPS, 1200 BPS, SUB, LSB, etc.) and what frequencies in the 10 meter band should become home to a dedicated group of Ten-Teners. And let's not forget the world above 28.500 MHz! We'll also need to discuss what constitutes a LEGAL 10-10 contact for packet radio. Will digipeaters be allowed? Must the entire link be 10 meters? etc.

Here are some things we are missing out on....

- 1) Real time keyboard to keyboard 10-10 QSO's. (Let's swap numbers.)
- 2) File transfers of Chapter related information (Got the new Raceway program?)
- 3) Post your most up-to-date list on your bulletin board for downloading.
- 4) Send contest logs to Chapter Coordinators (It could happen!)
- 5) Send messages to other 10-10 members whom you haven't heard from in a while.

These are just some suggestions. I'll bet there's a million other ideas that will pop up as it gets more popular. Therefore, I am asking anyone with input on operating standards, ideas, frequency suggestions, and other comments to drop me a line. I'll put them all together and get back to the membership with the results of the poll. You can reach me via packet at: N2UEI@WA2NDV.#NLI.NY.USA.NA or N2UEI.AMPR.ORG.[44.68.48.8] or at the address below.

.....Robert Tarwacki, N2UEI #64231
37 Ada Drive
Staten Island, NY 10314

from the Contest Manager

Well, the February SSB contest has concluded. It's too early for preliminary reports but I hope you all had fun.

I am proud of our three chapters who are doing the scoring for this year's contests. It will be a great learning experience for all of those involved, me too!

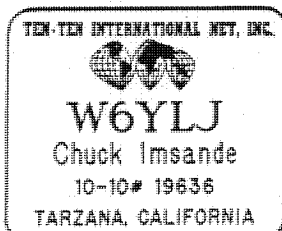
Please, and I mean puleeze, do not send your logs to me. Send them to the chapter doing the scoring as I only have to forward the logs to them anyway. Less work for mother...

I would like to throw a couple of questions to the floor. What say you to more contest activities, such as RTTY, FM and whatever? Secondly, do you feel the need for a dupe sheet? I feel the requirement may be superfluous, but then I may be wrong.

Let me know of your comments and wishes. Send to Harry A. Arsenault, MD, K1PLR #21680, Contest Manager, 48 Crane Road, Stamford, CT 06905.

OFFICIAL 10-10 BADGE

10-10 now has an official membership badge with your name, 10-10 number, city and state. The badge has a green background with a gold **TEN-TEN INTERNATIONAL NET INC.**, gold globe and white letters. This is the same badge that Officers and managers wear, except for the back-ground color. Officers badges are black, Directors are red and Managers are blue.



BADGE SHOWN 1/2 SIZE

ORDER FORM

10-10 Official Membership Badge

PRICE WITH SAFETY-LOCKING PIN \$8.50

Badge Information Please type or print legibly

Call Sign _____
Name (to appear on badge) _____
10-10 # _____
City, State _____

Ship my badge to:

Full Name _____
Address _____
City _____
State _____ ZIP _____

INCLUDE YOUR CHECK WITH ORDER
ALLOW 2 WEEKS FOR DELIVERY

MAIL TO: Rick Pourciau, NV5A #49338
The Sign Man of Baton Rouge
879 Castle Kirk Drive
Baton Rouge, LA 70808-6020

THIS ORDER FORM MAY BE PHOTOCOPIED

Hill Country 10-10 Gathering

The 7th Annual Hill Country 10-10 Gathering will be held on June 11, 1995, at the home of Jack Moore, K4NF #50708. Everyone is welcome. For those going to Tuscaloosa, the next weekend, we hope you can stop by on your way to the convention. For details, contact Jack at: Route 12-Box 378, New Braunfels, TX 78132, or call at 210/885-2194. On packet leave a message at the following : k4nf@k3wgf.#sat.tx.usa.na.

TenX DX News

continued from page 11

Isl. by YV5/N2AUK #53803, QSL to N2LDV. NA-080 Abaco Isl. Bahamas by NT9U #46739, QSL to WB4FLB. EU-088 Laeso Isl. OZ/DH8BQA #64672 and OZ/DL3BQA #42017.

HELP: The 10-10 records for the old Y2-Y6 callsigns have not been changed for all of the old East German stations. Will someone in Germany please write me with info on the new callsigns of these: Y21XO Ted, Y24AO, Y32QD Frank, Y49RO, Y66YF. I know that Y58AO is DL7VTZ Birgit #62276 and Y58IO is DL7VTM Holger #22401 who are married and operate from places like TN Congo and 9H Malta! They expect to be on Gozo Isl. EU-023 for CQWW WPX in late March until April 7th signing 9H1TZ and 9H1TY respectively. QSL to DL7VRO.

Letters & Cards Received:

DL5XAT Holger #64618 sent me his plans for going to 9H Malta Gozo Isl. EU-023 from April 11-23. His call will be 9H3SB and QSL via bureau or direct to H.Binder, Thorkoppel 15A - 22885 Barsbuttel, Germany.

K6QWH Howard #28380 thanks for the 10-10 DX info on LU2DF Cef #40951 on 28499 at 2130Z and others. **LU6HSV** Ronnie #66021 for his photocard and QSL, R.Lambert, POBox 65, C.P.5000, Cordoba, Argentina. **KE4KRT** Phil #66137 worked ZD7CRC Chuck #63447 on 28425 at 1430Z.

V31DE Derek #64606 for his photo and QSL, D.Griffin, POBox 273, Belmopan, Belize C.A.

I want to thank everyone for the letters and photos that you have been sending. Thanks to the QRZ-DX & Ohio/Penn DX Bulletins. Please send photos to Mike Davidson, 3518 Bellefontaine, Houston, TX 77025 USA. Email to MDavidson@infosvcs.tmh.tmc.edu.

Vanity Call Signs

continued from page 7

the call signs of their stations. We have also decided to resume issuing new club and military recreation station licenses." The FCC will issue public announcements detailing the procedures of the vanity call sign system.

Watch the Ham publications, **QST**, **CW** and **Worldradio** for details of the procedures to be followed in applying for the new vanity call signs. These details are beginning to be released as we go to press.

Paper Chasing Personalities

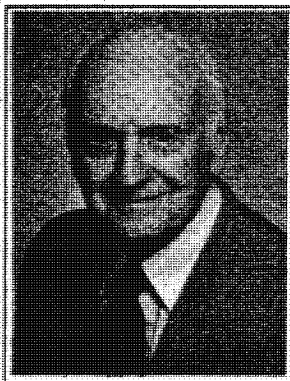
**Chuck Albrecht
N0CKW #8105**



Last issue I wrote about an incident on 28.345 MHz. This issue I would like to discuss the terrible pileup on that infamous frequency. The ten meter band is a very large area (phone: 28.3 to 27 MHz). For those of us who are licensed as general class and above, a great place to spread out and enjoy lots of elbow room. When the SSB portion of the band has good openings, don't forget to check out the 29 MHz region for AM signals and farther up the band you will find some openings on the FM mode. 10-10 numbers can be exchanged anywhere on the band, and I have met a lot of ten-teners on the higher frequencies. The portion of the band from 28.3 to 28.5 MHz can become quite crowded with the many novices and tech-plus stations on the air.

SPOTLIGHT

We shine our **SPOTLIGHT** this issue on **Jack Miller, W9WYN #6894** of Brookfield, IL. Jack had his 81st birthday last February. He was first licensed in 1936. He has earned a terrific pile of awards and certificates including six first place awards as the leading QRP station in 9-land during 10-10 QSO Parties.



Jack built his first crystal set in 1927 and has been active in amateur radio ever since. He enlisted in the Signal Corps in early 1942, and was discharged in 1946 after service in World War II.

Jack was among the first group of nominees and was elected a Director by the 10-10 membership in 1990. He has been a member of 10-10 for over 22 years as can be noted by his low 10-10 number of 6894. Keep up the good work, Jack, you represent the 9th call area very well.

Once again I call upon you the reader to help select those whom you would like to see in the

SPOTLIGHT in future issues of the *News*. Please send your nominations to me at: 532 Florence Street, Aurora, CO 80010-4227. If you would like to see yourself, send me a resume of your amateur radio and 10-10 accomplishments along with a picture.

.....73, till next time, Chuck, N0CKW #8105

WANTED - A Volunteer to help with typing the News and other typing requirements....

There are several potential volunteer positions open for a volunteer or two to help with the *News* and other 10-10 requirements. If you have a computer with a word processor (WordPerfect or Microsoft Word) and would be willing to donate some free time to 10-10, please drop a line to the Editor, address on page 2. One position would require a laser printer. Please include a list of your equipment, programs and printer(s). All details and help will be provided.

Those who don't read have no advantage over those who can't.

.....from the City of Lights Chapter Scoring chapter for the 10-10 Fall 1994 CW Contest

Taking liberties with a historic quote, we can describe the 1994 Fall CW QSO Party as, "Never have so many worked so few?" In spite of sharing the weekend with the other major contest - CQWW PHONE, participation in the 10-10 CW QSO Party was excellent - although most areas lacked propagation. Compared to the 1993 CW Party, 40% more logs were submitted but many contained notes commenting that they had trouble making more than a half-dozen contacts. Higher scores were accomplished primarily from working neighboring stations via groundwave...a smart strategy.

It's time to turn the QSO Party judging over to another chapter, thus ending a year of very satisfying experiences. Checking the logs and reading the kind of notes of encouragement from many of you brought our own chapter members closer together. The City of Lights Chapter thanks all of you for your support.

.....de Joe Dubeck, NA9A #31121
City of Lights Chapter

FALL 1994 CW QSO PARTY

| TOP TEN WORLD | | | AREA 4 <i>continued</i> | | | AREA 9 | | | AREA 0 | | |
|---------------|------|--------|-------------------------|------|--------|------------------------------------------|------|--------|------------------------------------------------------------------------------------------------------------------------------------------------------------------------------------------------------------------------------------------------------------------------------------------------------------------------------------------------------|------|--------|
| CALL | QSOs | POINTS | CALL | QSOs | POINTS | CALL | QSOs | POINTS | CALL | QSOs | POINTS |
| 1 KJ4RV | 55 | 98 | AD4RP | 32 | 62 | W9WYN | 17 | 34 | NOBZM | 25 | 40 |
| 2 F6IRG | 79 | 84 | K4QFK | 31 | 59 | AK9Y | 14 | 26 | KOPVI | 20 | 34 |
| 3 AE2L | 45 | 78 | N4EWG | 29 | 57 | N9UKX | 11 | 20 | NOWM | 7 | 13 |
| 4 KR4OE | 41 | 77 | KE4FLI | 28 | 55 | N9SRY | 11 | 19 | KDOIR | 6 | 11 |
| 5 N4ZCG | 38 | 72 | KE4KGB | 26 | 51 | KE9WZ | 10 | 19 | WBORHR | 4 | 6 |
| 6 WA5JDU | 46 | 68 | NR9A | 26 | 51 | WA9TWE | 9 | 18 | W5SRQ | 3 | 6 |
| 7 AD4RP | 32 | 62 | N4ERM | 25 | 48 | KB9FIV | 9 | 17 | WBOCON | 3 | 6 |
| 8 K4QFK | 31 | 59 | KC4JAN | 24 | 47 | N9RZQ | 9 | 17 | | | |
| 9 N4EWG | 29 | 57 | KL7NL | 23 | 46 | N9QKA | 8 | 16 | | | |
| 10 KA1YIY | 31 | 55 | KR4PQ | 22 | 44 | WA9OFH | 8 | 16 | | | |
| 10 KE4FLI | 28 | 55 | KU4W | 21 | 41 | KB9GVY | 6 | 12 | | | |
| | | | KE4DEV | 20 | 37 | NA9A | 6 | 12 | | | |
| | | | KC4RSZ | 17 | 34 | KC9DZ | 5 | 8 | | | |
| | | | KJ4SJ | 17 | 34 | W9ETU | 4 | 8 | | | |
| | | | KN4SS | 17 | 34 | WA9TPQ | 3 | 6 | | | |
| | | | AA4PR | 17 | 33 | KD9XP | 2 | 4 | | | |
| | | | AD4TL | 10 | 20 | KB9XN | 1 | 2 | | | |
| | | | NKOS | 9 | 18 | | | | | | |
| | | | KD4KWT | 7 | 13 | | | | | | |
| | | | WA4QDM | 5 | 9 | | | | | | |
| | | | KC4FC | 2 | 4 | | | | | | |
| | | | KE4AOF | 2 | 4 | | | | | | |
| | | | | | | | | | | | |
| USA WINNERS | | | AREA 5 | | | CHAPTER LOGS | | | AREA DX | | |
| CALL | QSOs | POINTS | CALL | QSOs | POINTS | CALL | QSOs | POINTS | CALL | QSOs | POINTS |
| 1 KA1YIY | 31 | 55 | WA5JDU | 46 | 68 | Possum Trot | 23 | 560 | F6IRG | 79 | 84 |
| 2 WB2STV | 14 | 26 | W5RAN | 33 | 46 | Battle Road | 10 | 109 | ZL1LE | 21 | 33 |
| 3 W03V | 5 | 10 | KC5BKT | 16 | 28 | Steel City | 8 | 84 | JA1AZS | 7 | 8 |
| 4 KJ4RV | 55 | 98 | N5XYN | 13 | 22 | City of Lights | 9 | 49 | JA1QGT | 4 | 6 |
| 5 WA5JDU | 46 | 68 | N5VAV | 12 | 18 | Rhone-Alpes | 1 | 79 | KH6DRT | 3 | 6 |
| 6 K6BPB | 6 | 11 | N5VAU | 8 | 13 | Bauxite | 4 | 43 | VE5BCS | 2 | 2 |
| 7 WA7DAM | 1 | 2 | W5EIJ | 7 | 13 | Blue Bonnet | 1 | 46 | | | |
| 8 WBJSM | 15 | 23 | WD5HJC | 7 | 12 | Houston Shot | 3 | 43 | | | |
| 9 W9WYN | 17 | 34 | KC5CP | 6 | 10 | Old Dominion | 3 | 29 | | | |
| 0 NOBZM | 25 | 40 | N5AFV | 4 | 8 | Mokan Teners | 2 | 29 | | | |
| | | | AD5F | 3 | 4 | C.A.T.T. | 3 | 26 | | | |
| | | | N5NHY | 2 | 4 | Republic of Texas | 5 | 26 | | | |
| | | | N5QXC | 2 | 4 | Colorado Bighorn | 2 | 23 | | | |
| | | | N5ZAM | 2 | 4 | Trotters & Pacers | 3 | 20 | | | |
| | | | | | | Down Under | 1 | 21 | | | |
| | | | | | | Gateway | 2 | 13 | | | |
| | | | | | | Liars | 1 | 8 | | | |
| | | | | | | Bay Area | 2 | 6 | | | |
| | | | | | | Golden Bear | 1 | 6 | | | |
| | | | | | | Alli's | 1 | 3 | | | |
| | | | | | | | | | | | |
| AREA 1 | | | AREA 6 | | | from the 100-900 BAR Awards Manager..... | | | There seems to be some confusion regarding the 500 BAR and associated certificate. When you reach the 500 BAR and receive your VP Number there is also a certificate available. The cost of the certificate is \$1.00 plus 2 first class stamps. The certificate is optional. Your VP Number will be assigned even if you do not want a certificate. | | |
| CALL | QSOs | POINTS | CALL | QSOs | POINTS | | | | | | |
| KA1YIY | 31 | 55 | K6BPB | 6 | 11 | | | | | | |
| W1RFW | 20 | 33 | WA6VLS | 6 | 11 | | | | | | |
| K1IEQ | 12 | 24 | N6BUO | 4 | 7 | | | | | | |
| KC1FV | 11 | 22 | K6EHA | 3 | 5 | | | | | | |
| WA1DUZ | 10 | 20 | WA6OCP | 2 | 4 | | | | | | |
| W1MXI | 10 | 18 | | | | | | | | | |
| KB1BIG | 6 | 12 | | | | | | | | | |
| W1SQM | 4 | 8 | | | | | | | | | |
| W1SIX | 3 | 6 | | | | | | | | | |
| N1RLO | 2 | 4 | | | | | | | | | |
| AREA 2 | | | AREA 7 | | | | | | | | |
| CALL | QSOs | POINTS | CALL | QSOs | POINTS | | | | | | |
| WB2STV | 14 | 26 | WA7DAM | 1 | 2 | | | | | | |
| WA2SUH | 8 | 15 | | | | | | | | | |
| K2HLC | 4 | 8 | | | | | | | | | |
| KB2MRI | 2 | 4 | | | | | | | | | |
| AREA 3 | | | AREA 8 | | | | | | | | |
| CALL | QSOs | POINTS | CALL | QSOs | POINTS | | | | | | |
| W03V | 5 | 10 | W8JSM | 15 | 23 | | | | | | |
| | | | W8PJY | 8 | 16 | | | | | | |
| | | | KB8FCM | 3 | 6 | | | | | | |
| AREA 4 | | | | | | | | | | | |
| CALL | QSOs | POINTS | | | | | | | | | |
| KJ4RV | 55 | 98 | | | | | | | | | |
| AE2L | 45 | 78 | | | | | | | | | |
| KR4OE | 41 | 77 | | | | | | | | | |
| N4ZCG | 38 | 72 | | | | | | | | | |

W6OI #109 ON THE AIR

Morrie Goldman, W6EHM #4189
Trustee, W6OI #109 10-10 Club Station

June 1-18, 1995

Dick Russell, KJ5VV #62500, is the designated control operator for W6OI/5 on ten meters June 1 thru June 18, 1995 during the Special Events for the Tenth Annual Aerospace America Airshow at Will Rogers International Airport, OK. Dick is president of the FAA Aeronautical Center Amateur Radio Club. The club station, W5PAA #62599, was established in 1946 and operates from the Mike Monroney Aeronautical Center, Oklahoma City, OK.

June 10-11, 1995

W6OI will be on the air for the special event of the sixth annual 10-10 Hill Country Gathering at New Braunfels, north of San Antonio, Texas. Jack D. Moore, K4NF #50708, is the designated control operator for the 48-hour period of June 10-11, 1995. Jack invites you to stop by his QTH if you are on your way to the 10-10 convention in Tuscaloosa. (See additional information on page 19.)

June 15-18, 1995

Chuck Imsande, W6YLJ #19636, is the designated control operator for W6OI/4 at the special event 10-10 Convention in Tuscaloosa, AL, for the period June 15-18, 1995.

The 10-10 Club Station, W6OI #109, is available to any current (dues paid) 10-10 member or chapter for use as a special event station, Field Day station, etc. Make written application, with dates of operation, purpose of operation and any other information to: Morrie Goldman, W6EHM #4189, W6OI License Trustee, address on page 2. Include a photo copy of your amateur license.

New Address for WPX Manager

The WPX (Prefix) Award Manager, Rex Holford, KFOYF #20423, has a new address and all WPX Award Applications and correspondence should now be sent to: Rex Holford, KFOYF, WPX Manager, 916 McKenzie, Council Bluffs, IA 51503.

Wanted - Photographs

Send photos of you or any 10-10 member, or 10-10 activity, to the Editor. Black and white or color photos are acceptable. Do not cut photos. Be sure to include identification of the persons or activity.

a message from Elaine Nickoloff, N8CBE #30409

I would like to take this opportunity to thank all Officers, Board Members and 10-10 members for their input, assistance and cooperation during the four years I have been Director of the Membership Committee.

During the previous four years the Membership Committee has been busy preparing an up-to-date guide for Area Managers. Worked toward having a 10-10 booth and 10-10 forum at the 1991 National Convention held at Saginaw, Michigan, and taken care of any correspondence necessary to fulfill the position as a Director.

I have attended all meeting of the Board of Directors except one and that was due to the illness and subsequent death of my mother. The many sympathy cards I received were appreciated.

It has been a pleasure and great experience participating as a Director on the Board for the last four years. I will continue to be the Manager for the OM/XYL Award.

Sincerely,
Elaine M. Nickoloff, N8CBE #30409

It is the height of absurdity to sow little but weeds in the first half of one's lifetime and expect to harvest a valuable crop in the second half.

.....Percy Johnson

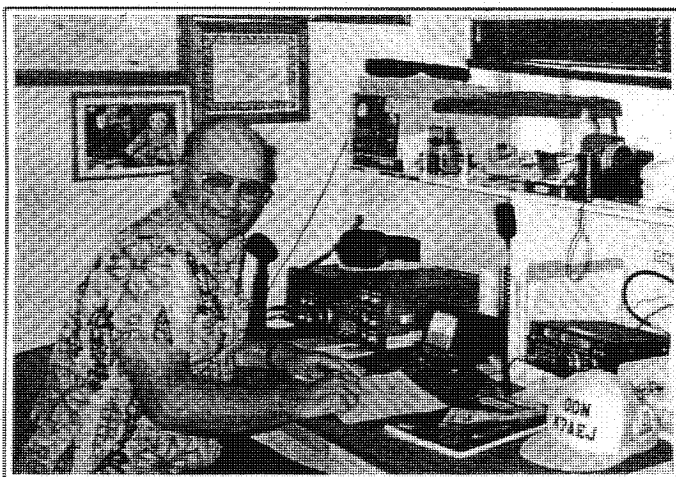


Shuttle ENDEAVOUR astronomy specialist Dr. Ron Parise, WA4SIR, of Silver Springs, Maryland, (left) and Ken Killer, K6IR #4499, of Rockville Maryland (right) at the Naval Officers club in Bethesda, Maryland. ENDEAVOUR was launched to study the most violent stars and galaxies in the cosmos. Dr. Parise was also an astronaut aboard the COLUMBIA STS-35 shuttle mission in 1990.

STATION OF THE MONTH

By BOB RYAN, K6YVG #18022

The ham station, WB7BJW #65710, located at the Veterans Administration Domiciliary in White City, Oregon is a very busy station. Don Simonsen, K7AEJ #52045, is the chief operator, and WB9MQN, Jim Benson, is the station trustee. The station has worked 95 countries and 40 states on 10 meters. Don has Elmered 30 veteran patients that have received their FCC amateur license in the past four years. The station is a member of the Oregon Emergency Net, IHN Net, Veterans Amateur Radio Service Net, and Armed Forces Radio Net. Don is also a member of Navy-Marine Corps Mars, NNNVOTX for 31 years, and delivers many messages to the Medford Area of Oregon.



Don, K7AEJ #52045, at the controls of WB7BJW #65710, Veterans Administration Domiciliary Club Station in White City, OR

The station is open 7 hours a day, 5 days a week for the V.A. patients at the domiciliary, and visitors are always welcome. I believe this is the only VA station with a 10-10 number. The station equipment consists of a Kenwood TS-940S for 10-80 meters. All mode IC 275H, Astron 35 amp 12V power supply. Packet station includes Kenwood 241-A transceiver, MFJ 1278 TNC, Kaypro 2 computer with printer for patients that like to short wave only. The station has a pair of triband beams at 30 and 35 feet plus 40 and 75 meter dipoles at 40 feet. Don says about the only thing they need is some new code tapes, code oscillators for their students and newer call books. If you could help them out, I'm sure they would appreciate it.

They can also be reached on packet address via: WB7BJW@W7OEK.SWOR.OR.USA.NA.

from the VP Awards Manager

.....Carl Fisher, W0HIK #40675

The VP Awards, which have been on hold since Hiram Wolf, W4NWP #32033, became a SK are starting to flow again. The problems with Hiram's computer disks have been solved, with the help of Bob Young, W1MXI #17800.

Several things to note if you are ready to submit a worksheet for a VP BAR or VP Worked all States award. VP contacts are made when both parties to the contact have a VP number. If you do not have a number, it is not a "VP contact". When submitting the worksheet, include your name, address, call, 10-10 #, VP number, application for ___ BAR, and the contacts must be in VP number order. Your list should be in the following format: VP #, 10-10 #, Call, Name, Location (State or Country), and Date of QSO. Submit only 100 contacts at a time for any BAR, and a statement "All of the above VP contacts were exchanged over the air and not copies from a roster list. All contacts were made after my VP number was issued. Signed: _____"

Any list with the above information which is typed, from a computer printout, or in readable longhand is acceptable. Applications with greater than 5% errors will be returned without action. Three (3) duplications from prior lists and any on this list are not allowed. VP WAS applications have the same information, with the QSL cards and list arranged alphabetically by state. Any questions will be answered, send an SASE to: Carl Fisher, W0HIK #40675, VP Awards Manager, 5 Angelina Drive, Augusta, KS 67010.

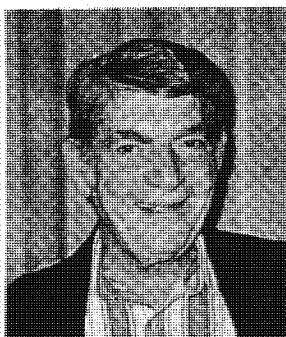


Front row (left to right) Red, W7LQU #54666, Garry, VE7ACM #30939, Rear row (left to right) Margaret, XL3UD and Janis, VE7AAP #50407

10-10 Reflections

By
Morrie Goldman
W6EHM #4189

10-10 Historian



The election results were announced in the October 1994 *News* and a most impressive 4200 ballots were counted. Congratulations to our new president Tom Henderson, K4CIH #33233, and to all the winners. Norm Lefcourt, W6IRT #14981, past president, has served with distinction and will continue to serve 10-10 as a member of the Board of Directors acting as President ex-officio.

Here is a list of 10-10 Presidents starting with Irving F. Hunter (SK), K6PWO #97, the founder of 10-10 in 1962 and who served as the nets first president.

| | | | |
|---------|--------|-------|----------------------------|
| 1962 | K6PWO | 00097 | Irving F. Hunter (SK) |
| 1963 | K6ZPW | 00091 | Scout Grey Eagle (SK) (1) |
| 1963 | WA6KBO | (2) | Lee E. Burch |
| 1964 | K6CQN | 07999 | Joseph S. Plumb (SK) |
| 1965 | W6VEE | 00034 | Edwin A. Steinbach |
| 1966 | W6TCH | 00011 | Robert C. Steinbach |
| 1967 | W6FFN | 00098 | Charles "Newt" Fisher (SK) |
| 1968 | WB6LWW | 00103 | Edgar O. Blore |
| 1969 | W6FFN | 00098 | Charles "Newt" Fisher (SK) |
| 1970 | W6EWO | 00417 | Joseph G. DiCarlo (SK) |
| 1971 | WA6LVA | 01279 | William G. Fuller |
| 1972/73 | WB6LWW | 00103 | Edgar O. Blore |
| 1974/77 | W6EHM | 04189 | Morrie Goldman |
| 1978 | W6ENC | 01774 | George E. Elliott (SK) |
| 1979 | W6WPY | 14949 | Robert O. Hartley (SK) |
| 1980/82 | W6QIR | 04509 | Howard A. Bowman (SK) |
| 1983/84 | W6OAW | 10947 | Carl Winter (SK) |
| 1985/88 | W6QIR | 04509 | Howard A. Bowman (SK) |
| 1989/94 | W6IRT | 14981 | Norm Lefcourt |
| 1995/ | K4CIH | 33233 | Tom Henderson |

(1) Resigned (2) No 10-10 # ever assigned

I received an application for membership from Joe, K6CQN in 1974 when I was Area 6 District Manager. He was assigned #7999 in proper sequence, unaware that he had been 10-10 President before 10-10 numbers were first assigned in late 1967. When Claude Martin (SK), W6LRY #437, District Manager Coordinator (that's what the Records Manager was called back in those days) received my report he suggested that Joe, K6CQN be reassigned an available low 10-10

number (e.g. #99). Joe graciously refused the offer and retained his #7999.

Twenty years ago, the 10-10 Quarterly Meeting convened on April 13, 1975, at the Miramar Hotel in Santa Monica, California. The meeting was mainly concerned with FCC Docket 20282 proposing the allocation of 29.0 to 29.7 MHz segment of the 10 meter band to the new Experimenter Class; denying it to General Class and Advance Class operators. After much discussion it was resolved that W6ENC and W6EHM prepare a letter to all U.S. Chapters and Net Control Stations urging them to express their views regarding Docket 20282. We expressed our concern that the FCC requirement that an original and 14 copies be filed would serve as a deterrent. I know not whether that action was a factor in the FCC rejection of Docket 20282, but I'm sure the proponents were chagrined when the FCC granted SSB privileges to the Novice and Technician Class operators on 28.3 to 28.5 MHz.

.....from the Chattanooga Choo-Choo Chapter

For many years, Engineers of the *Chattanooga Choo-Choo Chapter* have prided themselves in leaving the TRACK 29 on a regular schedule.

Recently, however, the pretty one of our personnel has been forced to take a short detour back to the ROUND HOUSE (hospital) for some major repairs and removal of unnecessary parts.

We're happy to report that Alice is back on the track again and will soon be up to FULL SPEED AHEAD and her usual, sunny, bubbly, effervescent disposition.



Frank Vogel, WB5PMU #38082, of Gulfport, MS

treasurer's report

Keith Schlottman
KI7RK, #63324

STATEMENT OF INCOME

Third Quarter 1994-1995
October 1, 1994 -
December 31, 1994



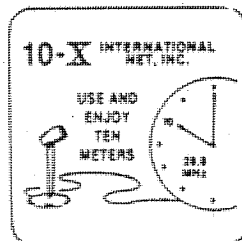
| | | 3RD QTR | YEAR-TO-DATE |
|---------------------------------|----|---------|--------------|
| REVENUE | | | |
| MEMBERSHIP | \$ | 21,674 | \$ 51,004 |
| SCHOLARSHIP FUND | | 54 | 672 |
| INTEREST | | 264 | 2,174 |
| TOTAL REVENUE | | 22,692 | 53,850 |
| EXPENSES | | | |
| OPERATING EXPENSES | | 10,875 | 28,950 |
| SCHOLARSHIP | | 0 | 1,500 |
| BOARD MEETING EXPENSES | | 0 | 5,238 |
| BALLOTS EXPENSES | | 0 | 4,231 |
| CONVENTION EXPENSES | | 1,500 | 2,084 |
| AREA MANAGERS | | 391 | 1,781 |
| OFFICERS & DIRECTORS | | 289 | 1,344 |
| AWARDS & CONTESTS | | 205 | 766 |
| OTHER MANAGERS & SERVICES | | 562 | 1,829 |
| TOTAL EXPENSES | | 13,922 | 47,823 |
| NET INCOME | \$ | 8,770 | \$ 6,027 |
| NET ASSETS AT DECEMBER 31, 1994 | \$ | 121,783 | |

**ORDER YOUR 10-10
MEMBERSHIP BADGE TODAY
SEE PAGE 19 FOR INFORMATION
AND ORDER FORM**

TEN-TEN STAMPS

**ORDER TEN-TEN STAMPS
FOR ALL YOUR
CORRESPONDENCE**

144 SELF
STICK
FOIL
STAMPS
\$5.00
POSTPAID



ORDER FROM
10-10 INTERNATIONAL NET, INC.
643 N. 98TH STREET #142
OMAHA, NE 68114-2332

New Life Members

It is with pride we honor the following 10-10 members who have become **Life Members** of 10-10 during the period from 1 December 1994 through 28 February 1995.

| | | | |
|-------|--------|-------|--------|
| 01200 | WB4EVH | 47618 | WA7NIY |
| 02007 | W5LPV | 50708 | K4NF |
| 02225 | K1WOU | 51801 | NH6SJ |
| 09916 | WB0LPB | 56860 | KA0WWG |
| 18241 | WB2HPU | 57566 | KN4ZZ |
| 18555 | W9CEQ | 58574 | N3IOP |
| 24752 | VE7IDV | 60287 | N9MLF |
| 30689 | K6DKQ | 61736 | N2OJG |
| 30740 | WB0QNU | 62353 | W0VDU |
| 31623 | K6VMN | 62987 | WD9GIG |
| 33782 | W6FDU | 64622 | JA3JOT |
| 35053 | VP9IX | 64994 | WH6IA |
| 38938 | VK2GWE | 65751 | N0RTI |
| 44474 | K9KVZ | 66157 | KE4KGB |
| 44475 | KA9HCH | 66258 | KC5HKI |

You too can become a **Life Member** of 10-10.
See details on page 31.

XXIQ vs XXIP

Some members have ordered both the **XXIQ** and the **XXIP** Roster Computer Programs. For clarification, the programs are basically the same. The basic difference is the **XXIQ** only cross references the call to 10-10 number or 10-10 number to call. The **XXIP** program does the same cross reference as **XXIQ PLUS** lists the member name, address, city (or country) and ZIP. In addition it also lists the member expiration date and will print a mailing label. The next release of **XXIP**, April 1995, is scheduled to also list the VP number (if the member has a VP number). It is also planned to add edit capabilities, a notes field for user stored information, and log provisions for BAR awards in future releases.

If you just want a simple cross reference program, order **XXIQ**, if you want the additional data and features provided in the **PLUS** program, then order the **XXIP** program, but you never need them both.

Important Note

When sending your check for any 10-10 item, such as dues or purchases of any 10-10 item (stamps, rosters, computer, rosters, hats, badges, etc., etc.), please put your call and 10-10 number on your correspondence and checks.

10-10 AWARDS

AWARDS ISSUED THROUGH 28 FEBRUARY 1995

TOP TEN HONOR ROLL

Allen Mattis,
N5AFV #27571

| CALL | 10-10 # | # CONT |
|----------|---------|--------|
| 1 WA5JDU | 3017 | 22,400 |
| 2 WORWC | 518 | 19,400 |
| 3 WB1DBZ | 26001 | 18,000 |
| 4 PJ2WG | 27999 | 17,000 |
| 5 K5MRU | 218 | 16,400 |
| 6 W4WKQ | 33299 | 15,100 |
| 7 WB7NUU | 17416 | 11,800 |
| 8 WA9LIC | 1599 | 11,600 |
| 9 N5CUQ | 40 | 11,400 |
| 10 K0PVI | 9902 | 11,100 |

VP AWARDS

Glen Harding,
K7OMK, #1407

500 BAR

| CERT# | CALL | 10-10 # |
|-------|--------|---------|
| 2809 | W9BZP | 38229 |
| 2810 | VE5ABF | 20109 |
| 2811 | KJ5FI | 64336 |
| 2812 | N1MSV | 63961 |
| 2813 | W8IIO | 41354 |
| 2814 | KE4HWK | 65620 |
| 2815 | KC4RIY | 58203 |
| 2816 | KD6IVL | 62089 |
| 2817 | KD6HWD | 62083 |
| 2818 | KC6NDG | 65841 |
| 2819 | WB6RDK | 65812 |

VP AWARDS

Carl Fisher
W0HIK #40678

VP-100

| CERT# | CALL | 10-10 # |
|-------|--------|---------|
| 329 | WA5HWI | 63313 |
| 330 | KA1HUS | 35324 |
| 331 | N7QOZ | 62599 |
| 332 | N4JII | 37708 |
| 333 | K3BMI | 53487 |
| 334 | AD4QF | 08985 |
| 335 | KB7EQW | 47699 |

1000 BAR

Allen Mattis,
N5AFV #27171

| CERT # | CALL | 10-10 # |
|--------|--------|---------|
| 1378 | WX7M | 62539 |
| 1379 | KE4AAZ | 65767 |
| 1380 | KE4BVI | 66190 |
| 1381 | W3EHZ | 39561 |
| 1382 | NOLYZ | 56314 |
| 1383 | N4EKD | 39470 |
| 1384 | KB1AWE | 63947 |
| 1385 | KQ4PK | 63201 |
| 1386 | WB4SYP | 15472 |

2500 BAR

| | | |
|-----|-------|-------|
| 357 | KE9WZ | 49610 |
| 358 | F6IGF | 47472 |

OM/XYL AWARD

Elaine Nickoloff,
N8CBE #30409

BASIC - 10 TEAMS

| CERT # | CALL | 10-10 # |
|--------|--------|---------|
| 367 | VE7IDV | 24752 |
| 368 | KD6HWD | 62083 |
| 369 | K9EHP | 0247 |

25 TEAMS

| | | |
|-----|--------|-------|
| 353 | KE4CRU | 65133 |
| 369 | K9EHP | 02847 |

50 TEAMS

| | | |
|-----|-------|-------|
| 369 | K9EHP | 02847 |
|-----|-------|-------|

WORKED ALL CONTINENTS

Mark Taylor Murphy,
KC4HIT #57448

| CERT# | CALL | 10-10 # |
|-------|--------|---------|
| 466 | N2EGO | 37582 |
| 467 | KA8FTP | 49822 |
| 468 | OK2BJR | 36982 |
| 469 | JH1IED | 39975 |

LUCKY 13 AWARD

Glen Harding,
K7OMK #1407

| CERT # | CALL | 10-10 # |
|--------|--------|---------|
| 379 | N9FWM | 44484 |
| 380 | KB7UMN | 65709 |
| 381 | ZS6NB | 63494 |
| 382 | PA3EQU | 47493 |
| 383 | N9OPV | 61484 |
| 384 | AB5SP | 62183 |
| 385 | KB2SQ | 25296 |
| 386 | K6SIW | 48519 |

WORKED ALL STATES

Susan Brackeen,
KA1CAD #29600

| CERT# | CALL | 10-10 # |
|-------|--------|---------|
| 2280 | WB7UGI | 58010 |
| 2281 | KE6AGR | 64951 |
| 2282 | VE7IDV | 24752 |
| 2283 | WB6JVP | 63117 |
| 2284 | KB5LKA | 55808 |

COUNTY HUNTER AWARD

Alice Jenkins,
NR4R, #31223

100 COUNTIES

| CERT# | CALL | 10-10 # |
|-------|--------|---------|
| 363 | KE4BPL | 65136 |
| 364 | N1RCK | 65412 |
| 365 | KE4BVI | 66190 |
| 366 | KD4IBI | 61844 |
| 367 | N5ZMP | 62133 |
| 368 | N0YYO | 66372 |
| 369 | N3OWF | 64522 |
| 370 | N4FBY | 04950 |

200 COUNTIES

| | |
|--------|-------|
| KB5AYF | 65048 |
| KE4BVI | 66190 |

300 COUNTIES

| | |
|-------|-------|
| N4QAI | 47871 |
|-------|-------|

400 COUNTIES

| | |
|--------|-------|
| KA9ADD | 42381 |
| KB6UPG | 51849 |
| NOLYZ | 56314 |

500 COUNTIES

| | | |
|----|--------|-------|
| 84 | KB6UPG | 51849 |
|----|--------|-------|

600 COUNTIES

| | |
|--------|-------|
| VE7IDV | 24752 |
| KB5UNX | 94337 |

700 COUNTIES

NONE

800 COUNTIES

| | |
|-------|-------|
| KB5FR | 17217 |
|-------|-------|

900 COUNTIES

NONE

1000 COUNTIES

NONE

1100 COUNTIES

| | |
|-------|------|
| K0PVI | 9902 |
|-------|------|

PREFIX AWARD

Rex Holford,
KF0YF #20423

100 PREFIX

| CERT# | CALL | 10-10 # |
|-------|--------|---------|
| 188 | K1IEQ | 31363 |
| 189 | K6PZE | 01341 |
| 190 | WA5HWI | 63313 |
| 191 | KA1TFU | 52461 |
| 192 | KA7ICF | 46221 |
| 193 | K6EHA | 65801 |
| 194 | KJ6HY | 57257 |
| 195 | KC4ZLB | 65652 |
| 196 | W9MVB | 50644 |
| 197 | WX7M | 62539 |
| 198 | KB5AYF | 65048 |
| 199 | KA1FUE | 51298 |
| 200 | KD7UZ | 13825 |
| 201 | AC6FU | 10937 |

....continued on page 28

10-10 AWARDS

AWARDS ISSUED THROUGH 28 FEB. 1995

PREFIX AWARD

Rex Holford,
KF0YF #20423

continued from page 27

200 PREFIX

| | | |
|-----|--------|-------|
| 91 | N9FWM | 44484 |
| 92 | KA1TFU | 52461 |
| 93 | K1IEQ | 31363 |
| 94 | WA5HWI | 63313 |
| 95 | KE4BPL | 65136 |
| 96 | KA7ICF | 46221 |
| 97 | KB7DGZ | 46235 |
| 98 | W9MVP | 50644 |
| 99 | WB6JVP | 63117 |
| 100 | AF5W | 11616 |
| 101 | WD5HJC | 21786 |
| 102 | WX7M | 62539 |
| 103 | KA1FUE | 51298 |
| 104 | KD7UZ | 13825 |
| 105 | AC6FU | 10937 |

300 PREFIX

| | | |
|----|--------|-------|
| 58 | KF4FP | 32338 |
| 59 | K1IEQ | 31363 |
| 60 | KA1TFU | 52461 |
| 61 | AF5W | 11616 |
| 62 | KA1FUE | 51298 |
| 63 | KD7UZ | 13825 |
| 64 | VE3NLU | 35992 |

400 PREFIX

| | | |
|----|--------|-------|
| 29 | K1IEQ | 31363 |
| 30 | KF4FP | 32338 |
| 31 | KA1TFU | 52461 |
| 32 | AF5W | 11616 |
| 33 | KA1FUE | 51298 |

500 PREFIX

| | | |
|----|--------|-------|
| 20 | WB5SKQ | 11825 |
| 21 | K1IEQ | 31363 |
| 22 | AF5W | 11616 |

600 PREFIX

| | | |
|----|--------|-------|
| 13 | N6GDS | 36046 |
| 14 | WB5SKQ | 11825 |
| 15 | AF5W | 11616 |

700 PREFIX

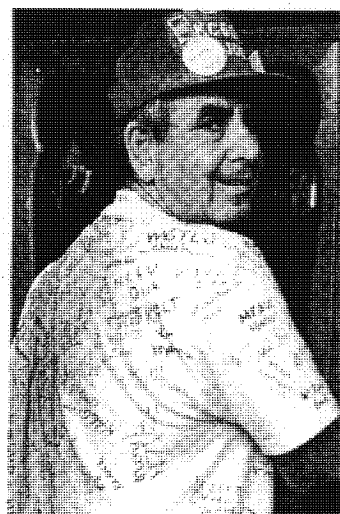
| | | |
|---|--------|-------|
| 8 | KC5CP | 24949 |
| 9 | WB5SKQ | 11825 |

An efficiency expert is smart enough to tell you how to run your own business, and too smart to start one of his own.

One thing you can say about kids: At least they don't bore you telling you the clever things that their parents did.

Joe and his T-shirt

Joe, KC6QXU #59560, has attracted considerable attention with his California license ham call plate on his T-shirt. Joe wrote to tell us how he got the License Plate T-shirt.



"The process was very simple. I took my license plate to a copy center which

used a color laser copier and made a transfer print of my plate. I had it made actual size and the cost was \$6.00. I then took it to a T-shirt shop who hot steamed it onto the T-shirt. That was another \$2.00. I have had a ball with the shirt. Almost have Worked all States from the Paper Chasers Bash at Las Vegas and from the ARRL convention in San Diego, CA, last August. Sharpie now has a autograph pen that writes easily while wearing the shirt and not leaking through the shirt. It has been laundered several times and is still holding up. When you see me be sure to sign my shirt...

.....73, KC6QXU #59560

IARU Says Ham Radio Needs Code!

In preparation for the upcoming World Administrative Radio Conference, the International Amateur Radio Union (IARU) formed the CW Ad Hoc Committee more than a year ago to study the feasibility of the Morse code requirement.

The three member committee consisted of one representative from each of the three ITU areas: John Allaway, G3FKM (Great Britain, Region 1), David Sumner, K1XX, 10-10 #4582, (United States, Region 2) and Fred Johnson, ZL2AML (New Zealand, Region 3). The test of the Committee's final report has just now become available.

The end result is that the IARU CW Ad Hoc Committee recommends that the code requirement be continued indefinitely as a prerequisite to HF operation on the amateur service bands.

-W5YI Report

New Phone # for the Editor

Note that there is a new phone number for the Editor. It is 818/881-3676. The Editor can now receive E-Mail messages via America-on-Line at W6YLJ and on other E-Mail services at w6ylj@aol.com. There is also a 24-hour FAX line at: 818/996-4240.

New Thunderbird Chapter CM

Roy Bain, WB8JET #08829, became the Certificate Manager (CM) for the Thunderbird Chapter on March 1, 1995. The Thunderbird Chapter meets on Sunday at 22:00 Zulu on 28.475 MHz, winter only. Roy's address is: Roy Bain, WB8JET #08829, 11221 Rhode Island Ave., Youngtown, AZ 85363.

.....Wanted.....

Scholarship volunteers. Send your donation to the Scholarship Manager (address on page 2). How about \$1.00 for each year you have been a 10-10 member?

from the Editors Desk

Chuck Imsande
W6YLJ #19636

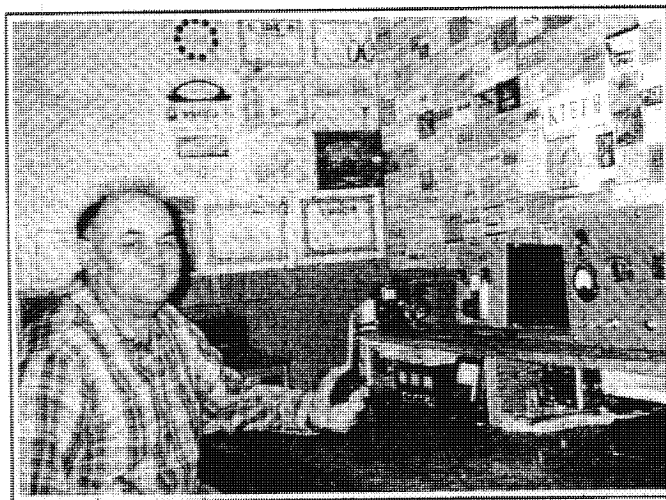


The letter which appeared in the *Mail Bag* column last issue caused a considerable number of comments, phone calls and letters. It also caused embarrassment to one 10-10 member. For this I apologize. With tunnel vision, I saw only a problem as described by one 10-10 member, and did not read into the problem any possible attack on a particular person but rather an attack on the way some chapters were conducting their programs.

Perhaps some good will come out of all of the bad that the letter created. The good is that the Operations Committee, under the Chairmanship of Ed, K5ERJ #11843, will be looking into the preparation of a **Chapter Operations Manual** in which guidelines for chapter operation will be outlined. The Operations Committee has a plan for the preparation of this new, much needed 10-10 document. They intend to contact many of the CH's and CM's along with a number of active paperchasers. If contacted by the Operations Committee, please respond and provide them with your input to this document, which in turn will make 10-10 a better organization.

"What did your teenage daughter do all summer?"

"Her hair and nails."



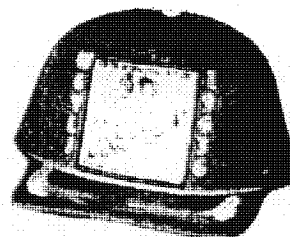
Bill Martinek, K7EFB #1865
Lilac City Chapter #21C and former CM

New Items for 10-10 Members.....

10-10 has made arrangements for three new additional official 10-10 items to be available to members from an "official supplier." They are an official 10-10 hat, the official 10-10 logo in patch form and 10-10 Eyeball QSO Cards. These items are all available from 10-10 member Gary Engleman, K5HGL #17149. You may order any of the following described items direct from Gary at **CAPS, UNLIMITED**, PO Box 460118, Garland, TX 75046. Make checks payable to CAPS, UNLIMITED. All items are shipped postpaid.

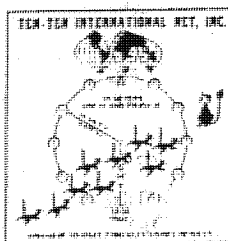
10-10 HATS

The official 10-10 hat is dark blue with a gold and black logo in the center. Call sign is on the right and 10-10 number is on the left side of the logo. Call sign and 10-10 numbers are in gold letters and numbers. One size fits all.



CAP with 10-10 logo \$10.00
CAP w/logo, call & 10-10 # ... \$15.00

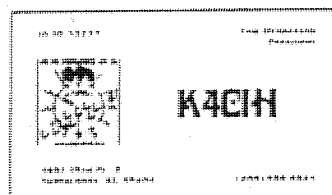
10-10 LOGO PATCH



The 10-10 logo is in patch form. This 3 1/2" square patch has a gold background with a black 10-10 logo, embroidered on heavy material. Can be used on shirts, caps, jackets, etc. \$5.00 postpaid.

10-10 EYEBALL QSL CARDS

Standard size (2" x 3") business cards printed in blue ink with call printed in red. When ordering be sure to include all information such as call, name, address, phone number and 10-10 number.



500 cards \$15.00
1000 cards \$22.00

Important Note

When sending your check for any 10-10 item, such as dues or purchases of any 10-10 item (stamps, rosters, computer, rosters, hats, badges, etc., etc.), please put your call and 10-10 number on your correspondence and checks.

Convention Plans

continued from page 1

a report to the membership will be presented and open discussion will be conducted.

The activities begin on Thursday, June 15th with check-in and Chapter table set-up from 5:00 p.m. to 9:00 p.m.. Friday, June 16th, the activities really begin with a full convention day beginning early and running until 10:00 p.m. Saturday, June 17th will be another full day concluding with a no-host Happy Hour followed by a gala Banquet. On Sunday, June 18th we will have a farewell breakfast prior to departure.

All activities will take place at the Capstone Sheraton Inn and Convention Center, Tuscaloosa, AL. The Capstone Sheraton is located on the campus of the University of Alabama and directly next door to the Bear Bryant Museum which will be open to 10-10 members attending the convention.

Prizes, prizes and more prizes is the plan with a Kenwood TS-50S as the main Pre-registration prize. Pre-registration is \$5.00 and all who pre-register will receive one ticket for the TS-50S drawing. Additional tickets for the TS-50S may be purchased for a donation of \$5.00 each only when ordered and paid for on the pre-registration form. Here is a chance to win one of the greatest little radios that has come on the market in a number of years. Will you be the lucky one?

Banquet prizes will include an ICOM 725 radio, a 25-watt 10 meter mobile radio and too many other goodies to mention. Tickets for the ICOM 725 may be obtained for a \$5.00 donation at the convention. This is in addition to the pre-registration TS-50S radio. The 25-watt mobile 10-meter transceiver will be given away at the banquet as a door prize along with a number of other prizes. The Eagle Watch Chapter has offered to provide a queen size hand made quilt consisting of 50 hand painted wild flowers. Benny Wooten, KE4SDU #57032, Eagle Watch Chapter Head, says that anyone that brings six (6) copies of their paid-up dues card and makes a donation of \$5.00 will be eligible for the drawing. The six copies of your dues card will be used as your raffle tickets.

For a pre-registration package, send a SASE (#10 size) to: Tom Henderson, K4CIH #33233, 4901 15th Place East, Tuscaloosa, AL 35404-4522.

The only advise I get about raising children is to be consistent. But how can I be consistent? They never do the same thing twice.



Archie Rideout, VE9AR #25995
of Fredericton, NB, Canada.

1995 10-10 CONVENTION PRE-REGISTRATION FORM

June 16-17, 1995 Tuscaloosa, AL

Name: _____

Call: _____ 10-10 # _____

Address: _____ APT _____

City: _____ State: _____ ZIP: _____

Registrations @ \$5.00 ea: TOTAL: \$ _____

Banquet @ \$20.00 ea: TOTAL: \$ _____

Chapter Tables @ 12.00 ea: TOTAL: \$ _____

TS-50S Tickets @ \$5.00 ea: TOTAL: \$ _____

TOTAL ENCLOSED: \$ _____

**MAKE ALL CHECKS OR MONEY ORDERS OUT TO
10-10 INTERNATIONAL NET, INC. NO CASH PLEASE**

Mail your Pre-Registration to:
Tom Henderson, K4CIH #33233
4901 15th Place East
Tuscaloosa, AL 35404

Call the CAPSTONE SHERATON (205/752-3200)
and make your room reservations. The convention
price is \$70.00 +tax per night. Be sure to tell them
that you are with the 10-10 Convention.

(YOU MAY PHOTO COPY THIS FORM)

10-10 AWARD INFORMATION

To apply for any 10-10 Award, Proof of paid-up membership is mandatory. A copy of your membership card or address label from the latest copy of the *10-10 International News* must be sent with your application.

An application listing the rules for each award is available from the Awards Managers listed below. Please send a request with a #10 (business size) envelope, stamped, self-addressed, with one unit of first class postage to the Award Manager for the Award you are interested in obtaining. Please no phone calls to Award Managers for an application or list of rules

BAR AWARDS

Work 100 10-10 members on the air and exchange call, name, location and 10-10 numbers. List these 100 numbers in numerical order, along with call sign, date of contact, name, and QTH (State or Country). The BAR Awards do not require an "official" application form, just a list as noted above. Send BAR applications to the following BAR Managers:

BAR APPLICATIONS 100-900

Glen Harding, K7OMK #1407 PO Box 133
Garden City, SD 57236-0133

BAR APPLICATIONS 1000+

Allen Mattis, N5AFV #27571 5314 Wigton Drive
Houston, TX 77096-5115

CERTIFICATE OF AWARD

A *Certificate of Award* is available when attaining the 1000, 2500, 5000 (and for each additional 2500) BARS at a cost of \$2.00 plus two first class stamps. Send your *Certificate of Award* application to the 1000+ BAR Manager. (Note: Plaques have been replaced by Certificates. Plaques are no longer available.)

INTERNATIONAL 500 OF THE WORLD

With the 500 BAR comes an Honorary VP Number, membership in *International 500 of the World*. A certificate is available for the International 500 of the World for \$1.00 plus 2 first class stamps. Once the 500 BAR is attained, you may go after the following awards:

VP CERTIFICATE

Contact 100, 200, etc. 10-10 members with a VP Number and submit a list in numerical order, VP#, 10-10 #, call, date of contact, name, and QTH. Make a statement that all contacts were made over the air and not copied from a list. An official application is not required for this award. Send your list to:

Carl Fisher, W0HIK #40678 5 Angelina Drive
Augusta, KS 67010-2262

LUCKY 13 CERTIFICATE

Glen Harding, K7OMK #1407 PO Box 133
Garden City, SD 57236-0133

VP WORKED ALL STATES

Carl Fisher, W0HIK #40678 5 Angelina Drive
Augusta, KS 67010-2262

CONTINENTS AWARD

Mark Taylor Murphy, KC4HIT #57448 108 Old Country Lane
Claremont, NC 28610-9561

COUNTRIES AWARD

Alice Jenkins, NR4R #31223 One Mitchel Lane
Rossville, GA 30741-4834

COUNTRIES AWARD

Alan Sherman, K1AS #10781 44 Polly Avenue
Danielson, CT 062392-2229

OM/XYL AWARD

Elaine Nickoloff N8CBE #30409 5383 Atherton Road
Burton, MI 45819-1531

WORKED ALL STATES AWARD

Susan Brackeen, KA1CAD #29600 Route 5 - Box 132-0
Boonville, MS 38829-9805

WORKED ALL STATE CAPITALS

Paul Johnson, N4JII #37708 2311 CCC Road
Dickson, TN 37055-4230

WPX (PREFIX) AWARD

Rex Holford, KF0YF #20423 916 McKenzie
Council Bluffs, IA 51503-1028

Attention Moms and Dads

Do you have a boy or girl under the age of 14 that has their ham license, and their 10-10 number? The NEWS would like to do a series of stories on our younger members. **The Future of Amateur Radio.**

Send information, including a picture, about your "young ham" to the Editor, address on page 2.

10-10 QSO PARTY NEWS CONTEST SCHEDULE

CW CONTESTS

Spring - 22-23 April 1995
Fall - 21-22 October 1995

SSB CONTESTS

Summer - 16-17 July 1995

For detail 10-10 contest rules and a contest dupe sheet, send a #10 SASE with one first class stamp to: Harry Arsenault, K1PLR #28160, 10-10 Contest Manager, 48 Crane Road North, Stamford, CT 06905.

Membership Information and Services

The following information is supplied to provide a ready reference on how and where to send your 10-10 dues, and where to order items offered by 10-10.

Make all checks payable to 10-10 International Net, Inc. Do not send cash. All DX are reminded that money amounts are quoted in US Dollars. DX members please pay by International Postal Money Orders.

NEW MEMBERSHIPS

New member applications should be sent to the Area Managers listed below. Dues for 10-10 membership are \$10.00 per year for members with a USA ZIP code and \$13.00 per year for DX. You may pay your dues for multiple years. A membership application is included in the 10-10 Information Manual.

AREA MANAGERS

- Area 1 District Manager**
Al Kaiser, N1API #25468
194 Glen Hills Road
Meriden, CT 06451-3832
- Area 2 District Manager**
Larry Berger, WA2SUH #407
9 Nancy Blvd.
Merrick, NY 11566-3119
- Area 3 District Manager**
Chester Gardner, N3GZE #44119
9028 Overhill Drive
Ellicott City, MD 21042-5221
- Area 4 District Manager**
Stephen P. Sites, KC4LOR #56976
13605 S. Dixie Hwy. #136-494
Miami, FL 33176-7252
- Area 5 District Manager**
Grace Dunlap, K5MRU #218
(October-June) PO Box 445
LeFeria, TX 78559-0445
(June-October) PO Box 13
Rand, CO 80473-0013
- Area 6 District Manager**
Dick Rauscher, W6ANK #1931
4371 Cambria Street
Fremont, CA 94538-1203
- Area 7 District Manager**
10-10 International Net, Inc.
643 N. 98th Street #142
Omaha, NE 68114-2332
- Area 8 District Manager**
John Hugentober, N8FU #16154
4441 Andreas Avenue
Cincinnati, OH 45211-2622
- Area 9 District Manager**
Jim Williams, N9HHU #42712
240 Park Road
Creve Coeur, IL 61610-3952
- Area 0 District Manager**
10-10 International Net, Inc.
643 N. 98th Street #142
Omaha, NE 68114-2332
- Area DX Manager**
Carol Hugentober, K8DHK #29588
4441 Andreas Avenue
Cincinnati, OH 45211-2622 USA
- All correspondence regarding membership services should be addressed to:
10-10 International Net, Inc.
643 N. 98th Street #142
Omaha, NE 68114-2332

DUES RENEWALS

10-10 dues are \$10.00 per year for members with a USA ZIP code and \$13.00 per year for members with a DX address.

All USA members (those with a USA ZIP code) send dues renewals to the following address:

10-10 International Net, Inc.
643 N. 98th Street #142
Omaha, NE 68114-2332

DX members send dues renewals to:
Carol Hugentober, K8DHK #29588
4441 Andreas Avenue
Cincinnati, OH 45211-2622 USA

FAMILY MEMBERSHIPS

Family Membership consists of a primary member and one or more relatives who qualify as a 10-10 member and who reside at the same location and postal address. Family Membership run concurrently with that of the primary member. Add \$3.00 for each additional Family Member for each year.

LIFE MEMBERSHIP

Life membership is available to USA members for \$250.00 and for DX members for \$325.00. Senior Life Membership is available for those over 65 (with proof of age) for \$85.00 US members and \$100.00 for DX members. Send all life membership applications to:

10-10 International Net, Inc.
643 N. 98th Street #142
Omaha, NE 68114-2332

ADDRESS CHANGE

Send all change of call, name and address to the following address:

10-10 International Net, Inc.
643 N. 98th Street #142
Omaha, NE 68114-2332

10-10 INFORMATION MANUAL

The 10-10 Information Manual, a 36 page manual of everything you would want to know about 10-10 is available for \$1.00 postpaid (USA or DX). Send your order along with a return address label (no SASE) to:

Mike Elliott, KF7ZQ #54625
10-10 Information Manager
9832 W. Gurdon Court
Boise, ID 83704-4080

SCHOLARSHIP DONATIONS

Donations to the 10-10 Scholarship Fund should be sent to the following address:

Morrie Goldman, W6EHM #4189
10-10 Scholarship Manager
21518 Marjorie Avenue
Torrance, CA 90503-6418

Make checks payable to 10-10 Scholarship Fund.

10-10 STAMPS

10-10 stamps that can be used on QSL cards and correspondence are available for \$5.00 per 144 stamps. Send your order to:

10-10 International Net, Inc.
643 N. 98th Street #142
Omaha, NE 68114-2332

AWARD & CERTIFICATE GUIDE

The official Awards and Certificate Guide of 10-10, along with complete chapter information, is available for \$6.00 USA ZIP codes and \$8.00 to DX. A monthly update is also available for \$10.00 per year USA and \$12.00 DX. Send your order to:

Joyce Medlen, KE4KGB #66157
10-10 Chapter Coordinator
696 Loblolly Drive
Vass, NC 23894-8222

10-10 ROSTER

The complete 10-10 membership list is available in hard copy or computer disk. The hard copy is printed on both sides of 8-1/2" x 11" paper 3-hole punched. The roster lists 10-10 number and call. SK's are identified. It is issued once each year in January. Cost of the printed roster is \$11.00 US and \$14.00 DX postpaid, and is available only by advance order.

10-10 offers two different Rosters-on-Disk. One, known as XXIQ will search for call if 10-10 number is known and for 10-10 number if call is known. XXIQ is available on either 3.5" (1.44MB) or 5.25" (360K) floppies. It will run on IBM compatible computers. Cost is \$5.00 per quarterly issue or \$17.50 per yearly subscription for US members. DX cost is \$7.00 per quarter or \$25.00 per yearly subscription.

The other 10-10 Roster-on-Disk is known as XXIP and is available only on 3.5" (1.44MB) disks. It is contained on 3 disks and requires DOS 3.3 or later and 16 MB of hard disk. This program will locate 10-10 number, call and will display Name, Address, City, State (or Country), membership status, expiration date, SK status and will print address labels. The price of XXIP is \$10.00 per quarterly release for US members and \$13.00 per release for DX. Order 10-10 Roster-on-Disk from:

10-10 International Net, Inc.
643 N. 98th Street #142
Omaha, NE 68114-2332

Be sure to note which program you are ordering and the disk size if ordering XXIQ. Quarterly releases are issued in January, April, July and October.

FCC FORM 610

The latest issue of the FCC Form 610 is available from 10-10 for an SASE. Send your request and an SASE with one first class stamp to:

Mike Elliott, KF7ZQ #54625
9832 W. Gurdon Court
Boise, ID 83704-4080

INSIDE

| | |
|----------------------------------|----|
| An-Ten-Ten-nas | 8 |
| Award Information | 30 |
| Awards | 26 |
| Big Horn Museum | 1 |
| Chapter News | |
| Chattanooga Choo-Choo | 24 |
| Coordinators Column | 13 |
| Hill Country Gathering | 19 |
| Springbok Chapter News | 9 |
| Contest Information | 30 |
| Fall 1994 CW Results | 21 |
| Convention - 1995 | 1 |
| DX News | 10 |
| Editors Desk | 28 |
| FCC Highlights | 7 |
| Half-size Two Element Beam | 6 |
| Hamfest Information | 5 |
| Mail Bag | 18 |
| Membership Information | 31 |
| Net Guide | 16 |

| | |
|-----------------------------------|----|
| New Life Members | 25 |
| New VP Manager | 5 |
| Official 10-10 Member Badge | 19 |
| Paperchasing | 20 |
| Presidents Message | 3 |
| Reflections | 24 |
| Rascal Scooter Mobile | 4 |
| Roster Information | 25 |
| Scholarship | |
| Honor Roll | 15 |
| Managers Column | 7 |
| Silent Keys | 12 |
| Station of the Month | 23 |
| Ten X DX News | 10 |
| Treasurers Report | 25 |
| W6OI, #109 on the Air | 22 |

CALENDAR

CW Contest..... April 22-23, 1995
 Hamvention..... April 28-30, 1995
 Convention..... June 17-18, 1995

10-10 Membership Information

10-10 Membership Information is available to any amateur who is interested in joining the 10-10 Net.

If you know someone who would like to learn more about 10-10 suggest that they send \$1.00, 2 first class stamps and an address label to Mike Elliott, KF7ZQ #54625, 10-10 Information Manager, 9832 W. Gurdon Court, Boise, ID 83704.

They will receive the 10-10 Information Package which consists of the 10-10 Information Manual along with the latest copy of the 10-10 International News.

----- Complete and tear off here. Attach to front of your contest log. -----

Cover Sheet

SPRING CW CONTEST - 0000Z 22 APRIL - 2400Z APRIL 1995

Chapter Assignment: _____

Total contacts with 10X #: _____ X2 = _____ Points

Total contacts without 10X #: _____ X1 = _____ Points

SEND LOGS TO:

Feline Friends/Restoration Project
 c/o Janis Cameron, VE7AAP #50407
 3528 11th Avenue
 Port Albert, BC Canada V9Y 4Y7

| |
|-----------------------|
| |
| Total Contacts |

| |
|---------------------|
| |
| Total Points |

Logs must be postmarked no later than 1 June 1995

Include this cover sheet and the mailing label on it OR a cover sheet of your own (follow the format of this one) and a copy of your current Ten-Ten membership card as proof of Ten-Ten membership for awards.

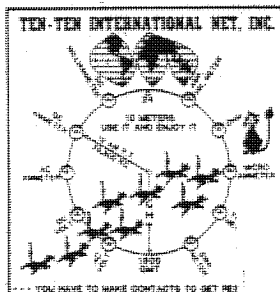
10-10 International Net, Inc.
 643 N. 98th Street #142
 Omaha, NE 68114-2332

Forwarding and Address
 Correction Requested

TIME TO RENEW? EXPIRATION DATE
 IS ON MAILING LABEL BELOW.

FIRST CLASS

FIRST-CLASS MAIL
U.S. POSTAGE
PAID
OMAHA, NE
PERMIT 1799



15984 WBOKIN 111997
 WALTER E FRIANT
 2310 S WALLONNIE DR
 MARSHFIELD WI 54449

April 1995 (Spring)