

10-10 INTERNATIONAL NEWS

Volume 41 Issue 3

\$1.50

July 2003 (SUMMER)

10-10 at HAMVENTION 2003



Data Manager Gerry Gross WA6POZ #21274, Esther Imsande KB6HW #23331 and President Chuck Imsande W6YLJ #19636 manning the booth at Hamvention 2003 in Dayton, Ohio. Our thanks to Freid Heyn WA6WZO #08011 for the photo (more page 5).

IN THIS EDITION - IN THIS EDITION - IN THIS EDITION - IN THIS EDITION

**AN ADVENTURE IN MOBILE CONTESTING - ARE YOU A BEACON-EER?
TAKING A TRIP DOWN MEMORY LANE - NET GUIDE IN THIS ISSUE
MOBILE CONTEST AND SPRING CW/DIGITAL CONTEST RESULTS**

The 10-10 International News

is published four times annually by the TEN-TEN INTERNATIONAL NET, INC. Publication dates are approximately mid January, April, July and October.

Each paid-up member will receive a copy. This is an independent publication. Permission to reprint is hereby granted, providing suitable credit is shown.

News items should be sent to the Editor. Technical articles and information on all 10-meter activities or news are welcome and solicited. All copy submitted must be typed, sent on computer disk or via E-mail. Suitable formats will be provided upon request.

Photographs are encouraged. Black and White or Color are acceptable. Include complete information on the back of each photo. Attach a label or other suitable paper to the back of the photo and write all information on the label, not the photo. If sending digital images, high resolution of a minimum 300 dpi must be used. Please do not send newspaper or digitally printed photos as they cannot be used.

Please mail all articles and photos to:

EDITOR 10-10 News
Steve Rasmussen, NØWY #68684
312 N 6th Street, Plattsmouth, NE 68048-1302
Email: n0wy@alltel.net



10-10 CHAPTER ACTIVITY REPORTS should be sent to the Chapter Coordinator
ADDRESS CHANGES: Members with US Zip Codes should send address changes to the Data Manager. All other members should send changes to the DX Area Manager.

NOTE: 10-10 IS NOT RESPONSIBLE FOR POSTAL SERVICE DIFFICULTIES

DEADLINE FOR NEXT ISSUE: 1 Sept 2003

Member
AMATEUR RADIO NEWS SERVICE



OFFICERS, DIRECTORS AND NET OFFICIALS

Award Managers listed on Pg 23 - Membership Information listed on Pgs 30-31

President

Chuck Imsande, W6YLJ #19636
 20815 Desert Sands Dr., Sun City West, AZ 85375-5443
 (623) 214-8788chuck@w6ylj.com

Vice President

Michael P. Elliott, K7BOI #54625
 11286 West Hickory Dale Dr., Boise, ID 83713-1028
 (208) 376-3458k7boi@cableone.net

Secretary

Dick Corlew, NC6V #25057
 3213 Carolyn Circle, Oceanside, CA 92054
 (760) 757-9284nc6v@cox.net

Treasurer

Keith Schlottman, KR7RK #63324
 9581 E. Calle Cascada, Tucson, AZ 85715-5819
 (520) 290-5883kr7rk@arrl.net

Directors

Linda Barnes, KJ4FM #43299
 310 Sequoyah Drive, Kingsport, TN 37660-3742
 (423) 378-3082kj4fm@chartertn.net

Larry Berger, WA2SUH #00407
 9 Nancy Blvd., Merrick, NY 11566-3119
 (516) 223-4611wa2suh@aol.com

Mike Crawshaw, G4BLH #18446
 50 Kibble Grove, Brierfield, Nelson, Lancs, England BB9 5EW
 Tel 01144 1282 613754g4blh@zen.co.uk

Bill Marple, AA7ZW #62075
 5075 N. Chieftan St., Las Vegas, NV 89149-2513
 (702) 395-1327 or cell phone (702) 501-6332aa7zw@arrl.net

Steve Rasmussen, NØWY #68684
 312 N. 6th Street, Plattsmouth, NE 68048-1302
 (402) 296-4434n0wy@alltel.net

Ed Redwine, K5ERJ #11843
 9 Yellowrose Lane, Augusta, KS 67010-2230
 (316) 775-5700k5erj@aol.com

Cliff Taylor, K5FBS #48461
 22707 Red Mountain Dr., Elmendorf, TX 78112-6034
 (210) 621-2741catk5fbs@aol.com

Joe Williams, WA9TSG #310
 PO Box 511092, Milwaukee, WI 53203
 (414) 263-3618jwilliams34@wi.rr.com

Certificate Manager

Ruth Bartholomew, NØKDB #48715
 HC 72 - Box 102A, Sullivan, MO 63080-9204
 (573) 468-2898n0kdb@fidnet.com

Chapter Coordinator

Cliff Taylor, K5FBS #48461
 22707 Red Mountain Dr., Elmendorf, TX 78112-6034
 (210) 621-2741catk5fbs@aol.com

Data Manager / Supplies

Data Manager, 10-10 Int'l Net., Inc.
 PMB 142, 643 N 98th Street, Omaha, NE 68114-2342
 (402) 891-2481wa6poz@arrl.net

Data Verification Manager

Don Ruf, KBØON #29849
 PO Box 717, Columbia City, IN 46725-0717
 (219) 244-6025kb0on@kconline.com

DX Area Manager

Carol Hugentober, WA8YL #29588
 4441 Andreas Avenue, Cincinnati, OH 45211-2622 USA
 (513) 661-5323wa8yl@juno.com

Editor 10-10 International News

Steve Rasmussen, NØWY #68684
 312 N 6th Street, Plattsmouth, NE 68048-1302
 (402) 296-4434n0wy@arrl.net

General Counsel

Dave Splitt, KE3VV #69831
 6111 Utah Avenue NW, Washington, DC 20015-2461
davidsplitt@erols.com

Internet Coordinator

L.B. Cebik, W4RNL #41159
 1434 High Mesa Drive, Knoxville, TN 37938-4443
 (865) 938-6335cebik@cebik.com

Net Manager

Bill Marple, AA7ZW #62075
 5075 N. Chieftan St., Las Vegas, NV 89149-2513
 (702) 395-1327 or cell phone (702) 501-6332aa7zw@arrl.net

Scholarship Manager

Larry Berger, WA2SUH #00407
 9 Nancy Blvd., Merrick, NY 11566-3119
 (516) 223-4611wa2suh@aol.com

SK Manager

Ruth Bartholomew, NØKDB #48715
 HC 72 - Box 102A, Sullivan, MO 63080-9204
 (573) 468-2898n0kdb@fidnet.com

W6OI Station Trustee

Jack Moore, K5CC #50708
 371 Ridge Creek Lane, Bulverde, TX 78163
 (830) 885-2194k5cc@arrl.net

HOT OFF THE PRESS

Steve Rasmussen NØWY #68684
Editor 10-10 News



I have recently received several requests to review or mention certain items or programs available for use by our membership. I need to pass on to you something I found in the by-laws of Ten Ten. It is listed under Section 8 Publications. Here it is verbatim: "8.1.2.7 Except when directed by the Board of Directors, the Editor will accept or publish no product reviews, as 10-10 does not endorse by direct or indirect reference commercial products or computer software. However, the mention of commercial products or computer software that are germane to an article is accepted so long as the article contains no recommendation or endorsement of the product and no personal references are included (such as the author's name). The Editor may edit such references to meet the terms of this provision." Basically, any articles received extolling the virtues of a specific program or piece of equipment can not be printed.

For example. I would love to explain some easy DX QSL hints, but they require using nested envelopes and, as far as I know, there is only one supplier of those that I have ever found. If you want to know his name, you will have to send me an email and ask me. I can't print it!

I recently have had a lot of correspondence from one of our members telling me how easy it is to build antennas using previously used or broken antennas, but it requires using a specific program, which can not be named! Therefore, it makes the article unusable. I am sorry.

In any case, this edition will be out a little earlier due to the convention coming up in just a few days. The next edition will have loads of pictures and lots of articles regarding some of the items discussed at the board meeting. Should probably have the minutes in there too. Hopefully I will have so many pictures that we will use them for a couple of issues.

Some of you know that I have been working very hard to get a better antenna system for my home. In November we put up a 50' free standing tower and it has been sitting there with nothing on it ever since. Well, no more! On Father's Day I climbed to the top and installed the rotor, mast and antenna (see page 18) and spent that evening testing it with wonderful results! I sincerely hope to make a good, strong contact with all of you I can and maybe I can even find some of you with the number 41 in your Ten Ten number. Why? See page 21 for the Anniversary QSO Party.

many 73 all!!! Steve NOWY

CONTENTS

<i>An Adventure in Mobile Contesting</i>	8
<i>Anniversary QSO Party Rules</i>	21
<i>An-Ten-Ten-nas</i>	10
<i>Are you a Beacon-er?</i>	6
<i>Award Information and Managers</i>	23
<i>Award Listings</i>	24
<i>Chapter Coordinator's Column</i>	12
<i>Contest Cover Sheet</i>	32
<i>Contest Results</i>	29
<i>Contest Rules and Calendar</i>	28
<i>DX News</i>	14
<i>Hill Country Picnic</i>	5
<i>Hot Off the Press</i>	3
<i>Life Members</i>	21
<i>Membership Application and Contact Log</i>	31
<i>Membership Information and Services</i>	30
<i>Net Control Stations</i>	3
<i>Net Guide</i>	27
<i>Net News and Quarterly Report</i>	20
<i>Officers, Directors and Net Officials</i>	2
<i>Organization Chart</i>	16
<i>President's Message</i>	4
<i>Scholarship Application Information</i>	22
<i>Scholarship Foundation Supporters</i>	22
<i>Silent Keys</i>	26
<i>Taking a Trip down Memory Lane</i>	19
<i>W6OI #109 On The Air</i>	21
<i>and much more!</i>	

10-10 NET CONTROL STATIONS

ALL NETS BEGIN AT 1800Z

Monday (28.380)	Dick, K6PZE #01341
Monday (28.800)	Scotty, WA6TQC #00071
Tuesday (28.380)	Tom, KA9EKG #70731
Tuesday (28.800)	Russ, N6CEX #29906
Wednesday (28.380)	Chris, N7PVL #58018
Wednesday (28.800)	Louise, N6ELK #36654
Thursday (28.380)	Bob, N6OPR #45715
Thursday (28.800)	Robert, KQ4PK #63201
Friday (28.380)	Bill, KB9MJ #22313
Friday (28.800)	Alan, VE4ALN #69217
Saturday (28.380)	Ed, KC4RIY #58203
Saturday (28.800)	Donnie, KB6QLC #42822
Sunday	"NEVER ON SUNDAY"

Alternate Net Controller	Don, KBØON #29849
Alternate Net Controller	John, NS2M #72143
Alternate Net Controller	Bob, WA6GSV #07673



from the office of the
PRESIDENT
10-10
International

Chuck Imsande
W6YLJ #19636

I don't know why publishing deadlines always come at a bad time. As an example, this column is being written just 2 weeks prior to the 10-10 Board of Directors Meeting, and Convention. If the deadline would have been 2 weeks after the Board Meeting and Convention just think of all of the news that I could have passed on in this column. So, we will settle for the next best thing and do a "before the fact" column. Here are some of the items that the Board will be considering at their annual meeting in San Antonio, TX, on June 27, 2003. There will be four new members of the Board attending their first 10-10 Board of Directors Meeting. They are Secretary Dick Corlew, NC6V, and Directors Cliff Taylor, K5FBS, Bill Marple, AA7ZW, and Steve Rasmussen, N0WY.

As usual, the Board has a full agenda consisting of a report from each Officer and Director, a report from Treasurer Keith Schlottman, KR7RK along with a recommended budget for the next year. Also a report from Data Manager Gerry Gross, WA6POZ, as to the status of new members, dues renewals and membership status as a whole.

Some of the more significant items that the Board will consider are a report from the Committee studying the establishment of a 10-10 QSL Bureau, a report from the Contest Committee regarding the revision to some of the contest rules, and a recommendation from the Contest Committee regarding the establishment of a Mobil Contest each year. A test of the 10-10 Mobile Contest was held on March 15, 2003 with good participation and positive comments from the membership. There are a number of other subjects to be taken under consideration by the Board including possible revisions to the Bylaws and Operations Manual.

After the close of the 10-10 International Net, Inc. Board Meeting, a meeting will be held for the 10-10 International Net Scholarship Foundation. The Board will review the operation of the Scholarship Foundation for the past year, and receive a report from Scholarship Manager Larry Berger, WA2SUH. The Board will vote on the number and amount of the Scholarships to be awarded next year. The Scholarship Foundation has in the past few years awarded five (5) \$1000 scholarships. The number of scholarships and dollar amount for each scholarship is determined each year based to some extent on the amount of donations received the prior year.

10-10 was at Dayton at Hamvention again this year. It

was a good show for 10-10. Although the attendance was down slightly, we had over 300 sign the log book at our booth and approximately 50 attending the forum. The attendees at the forum were mostly 10-10 members; however there were 8 or 10 that were not 10-10 members and came to hear all about 10-10. A presentation by Gerry Gross, and yours truly was followed by a question and answer period. Dayton is always a good place to see old friends and renew acquaintances.

Most of the comments received at the booth in Dayton were "when are you going to turn on 10-meters?", or "what has happened to the 10-meter band - it sure is dead!" There are a couple of answers to these type questions. First the famous sun spot cycle is on its down side of the 11-year cycle. In simple words this means that there is less propagation that when the cycle is at its high. When the cycle is at its high, propagation is good, and when the cycle is at or near its low, propagation is poor. Even at the low part of the sun spot cycle, there is intermittent propagation. This is evident by checking the 10-10 daily net check-ins listed in the 10-10 International News. A look at the most recent Net Quarterly Report indicated that check-ins was from a low of 6 to a high of 67 total for both daily nets. Although the numbers varied widely from day to day, the average check-in was approximately 30 per day. This indicates that there is propagation.

Remember we have two daily nets at 1800 Z. One net operates on 28.300 and the other operates on 28.800 every day except Sunday. Try to check in to one of these nets. Net control stations are located around the country and usually have assistant net control stations that act as relays. If you can't check into one of the 10-10 daily nets, try calling CQ on some of the popular 10-10 frequencies at various times of the day and you might be surprised at what you may hear.

Chapter Coordinator Dave Smith, K6RDK, has requested to be replaced for personal reasons. Dave served as Chapter Coordinator for over seven years, and has done a superb job as coordinator of chapter activities and the writing the Chapter Coordinator's Column for the 10-10 News. We will miss Dave and all he has done for 10-10. Director Cliff Taylor will assume the responsibilities of Chapter Coordinator. All Chapters should now send their information to Cliff.

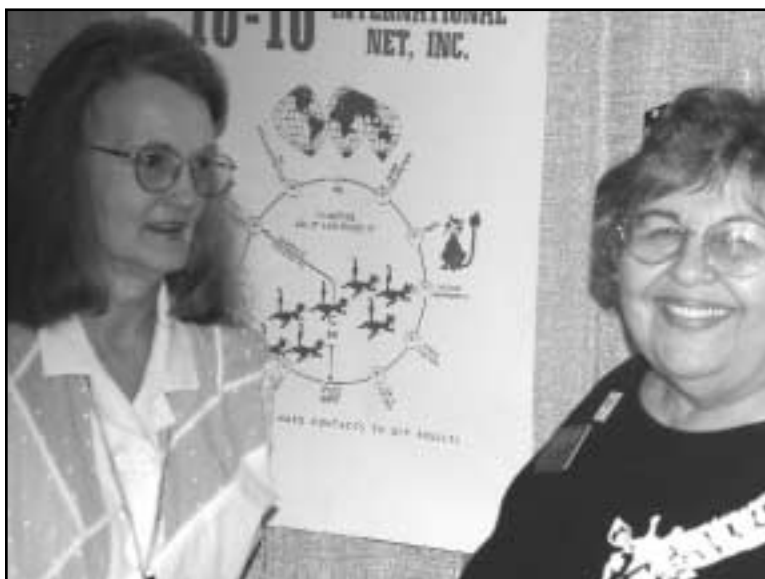
Due to health reasons, Counties Award Manager Hank Richroath, K5HWI, has found it necessary to resign. We are sorry to lose Hank as he has done a great job with the 10-10 Counties Awards program. We wish him well with his health problems.

The replacement for Hank has been named by Director Ed Redwine, K5ERJ, Chairman of the Awards Committee. He is Brad Kimble, K0DBK. Brad is a long time 10-10'er having served most recently as a Director. We are glad to have Brad back as a volunteer working again for 10-10.

more pics from Dayton.....



10-10 President Chuck Imsande W6YLJ #19636 and ARRL Chief Executive Officer Dave Sumner K1ZZ #04852



Sandy Heyn WA6WZN #12332 and Esther Imsande KB6HW #23331 doing a little...XYL-talk???

15TH ANNUAL HILL COUNTRY PICNIC

The 15th Annual 10-10 Hill Country Picnic was held June 1, 2003 at the home of Jack K5CC. Twenty three people attended including the 10-10 members shown here. From left to right is Ray N5DAS #35877, Jack K5CC #50708, Hank K5HWI #63313, Cliff K5FBS #48461, Bill WD5EDR #23693, Randy AJ5ZX #71083, Daryl N5SCA #57160, Allen N5AFV #27571, Janet KC5QCB #67897, Roy W5RJ #26659, Faye KB5DPM #48628, and Robert KA5VVD #42188. Club stations represented were W5RPT Memorial Valley ARC #67858, KC5OIG Brazos Valley ARC #67832, W5DPA Houston ARC #34659, WR5CRA Cove Repeater Assn #68189, W5SC San Antonio ARC #20365, and W6OI Ten Ten International Club Station #00109.



As a special event for the picnic and to advertise 10-10, Allen N5AFV was authorized to operate W6OI on two low earth orbit satellites on his way to the picnic from Houston. Allen made 65 contacts including 24 states, 3 Canadian provinces, Mexico, Puerto Rico and Guatemala. Two stations at the pocnic mad a satellite contact with Allen.

At the left is the San Antonio Convention Committee. From left to right is Bill WD5EDR #23693, Cliff K5FBS #48461, Jack K5CC #50708 and Ray N5DAS #35877.



ARE YOU A BEACON-EER?

by Bill WJ5O #37215

Are you a "Beacon'er"? You might be one if you have ever listened for a beacon, reported the reception of a beacon or have put a beacon signal "on the air". A Beacon'er makes contacts and exchanges numbers when other Ops say the band is "dead".

I'm a Beacon'er. I do "all of the above" and I would like to share my ideas about listening, reporting and operating a ten meter beacon.

There are several good reasons for a person to tune 28.175 to 28.300MHz and listen for propagation beacons. Just as the name implies, a propagation beacon is for information about propagation. Currently, there are over one hundred ninety beacons worldwide on ten meters. With this number of beacons, it is quite possible to hear several beacons at the same time. I will describe how logging beacons has helped me to determine ten meter propagation conditions. These same ideas can be applied regardless of a person's location.

My QTH in South Texas is a good location for beacon reception. With the exception of sporadic-E propagation, most one-hop distances on ten meters are in the 1500 to 2000 mile range. South Texas is within this distance from both the northeast and northwest coasts of the USA. The Gulf of Mexico additionally provides a convenient water path for South American and "down under" beacons.

The reception of a beacon is a "real time" indicator of conditions that will support communication on the ten meter band. When a person knows the power and source of the signal, it is possible to determine the magnitude and direction of the opening. Many beacon messages do not include the grid square or location, but much of this information is available on the Ten Ten web page. <<http://www.ten-ten.org>>

For instance, an East coast beacon operating with one watt, a vertical antenna, and showing a signal strength of 5 would be a pretty good indication that band conditions are very good in that direction.

The reception and identification of two or more beacons will indicate how wide spread the opening is. An example would be that beacons from both California and Washington are heard with about the same signal strength. Very likely, the opening will yield contacts along the entire West Coast and quite possibly nearby States.

Another reason for listening for beacons involves the identification and message of the beacon. Beacons use CW for the messages. The message is repeated continuously at about 15 words per minute, however there are some as slow as 5 and a few as fast as 22 WPM. This continuous message at different speeds can be very valuable source of CW practice.

Logging of beacon reception reports will give an indication of times during the day that certain propagation areas are open for communication. These records, if kept over a sun spot cycle, can provide valuable historical data in which future propagation can somewhat be predicted.

There are times when there are signals on the beacon band but no other stations are heard. It is quite possible that everyone is only listening. This is the time to point your antenna towards the beacon location and call CQ.

Beacons heard most often recently in South Texas include:

VE3TEN/B	28.175MHz
XE1SRF/B	28.189MHz
KØKP	28.212MHz
LU1FHH/B	28.199MHz
K6LLL/B	28.203MHz
NS9RC/B	28.297MHz
WA6APQ/B	28.244MHz
VK2RSY	28.262MHz
ZL3TEN	28.228MHz

The NCDXF/IARU beacon string on 28.200MHz is the propagation information needed by the DX'er. These are 18 Beacons around the world that identify in sequence with the call and four long dashes. The first dash is at 100W, second dash at 10W, third dash at 1W and the fourth dash at 0.1W. Every three minutes the string is repeated starting with 4U1UN and ending with YV5B.

When a person logs a beacon for the first time, it is nice to send a QSL card with the reception report. 99% of the Beacon operators are happy to QSL and quite often this is the only thanks they ever get. It is always considerate to enclose a SASE. Many reception reports can be sent via email using the address within the message or available on one of the "online" callbooks..

Reception of beacon signals can also be reported via the HF Beacon reflector. This is by subscription but there are no costs involved. This helps a beacon operator to know "when" and "where" His signal is being heard.

<<http://www.explore.force9.co.uk/beacons/hfbeacons.htm>>

I've had the WJ5O beacon on the air since June 1992 running 2 Watts into a roof mounted vertical antenna. I will describe how I was able to put this beacon in operation very economically.

There were millions of the older 23 channel CBs manufactured that used the 12 crystal synthesizer set-up with 23 MHz and 14 MHz oscillators. A check of garage sales and flea markets" can often turn up a bargain rig. I found my beacon rig for two dollars at a yard sale.

In this rig, the 23MHz signal mixes with the 14MHz signal to produce a signal in the 38MHz plus range. For a transmit frequency, this 38MHz signal is mixed with the transmit oscillator's signal (11.275) to have a 26.965MHz channel 1 transmitting frequency. For channel 23, 23.540 mixes with 14.990 to get a 38.530MHz signal. The 38.530MHz signal is mixed with 11.275MHz for a 27.255MHz transmit signal.

Now, find a crystal from almost any 40 channel PLL controlled CB. The reference frequency crystal is 10.240MHz (Most common - almost universal use by manufacturers)

Substitute the 10.240MHz crystal for the 11.275MHz transmit oscillator crystal.. Now, channel 1 becomes a transmit frequency of 28.000MHz. .

- | | |
|------------------|------------|
| Channel 17 | 28.200MHz. |
| Channel 19 | 28.220MHz |
| Channel 20 | 28.240MHz |
| Channel 21 | 28.250MHz |
| Channel 22 | 28.260MHz |
| Channel 23 | 28.290MHz |

With a little capacitance added, the crystal will "bend" a few Hertz either way. In parallel the frequency goes up - in series it goes down. I use a small trimmer capacitor in series for frequency tweaking.

The carrier output should be about 2 Watts after the "cans" in the transmit circuit are tweaked. DO NOT adjust any of the "cans" except those that "follow" the TRANSMIT OSCILLATOR to the output.

A 10 meter rig can be used for a "sniffer" when tweaking the cans. A short piece of coax from the rig laid close to the converted CB will give a good S meter reading when tuned to the beacon frequency.

Currently the Ten meter "beacon band" is considered to be 28.175 to 28.300MHz. The FCC rules only state that if the beacon is automatically controlled then it must be 28.200 to 28.300MHz, meaning appropriate apparatus to automatically shut down the beacon in case of malfunction.

An operator can use a code key to interrupt the "Push To Talk" circuit of an AM rig causing a transmission of a CW signal. The carrier of an AM radio transmitter is a "continuous wave" and the interruption of a carrier in a Morse code sequence is known as CW. Any receiver with a BFO (Beat Frequency Oscillator) will be able to hear the tone when tuning approximately 750 Hz off the carrier frequency.

There are many ways to automatically interrupt the PTT circuit for beacon operation. Memory keyer, computers, etc. The PTT circuit and PTT ground can be accessed at the microphone connector. I use a PIC (PicoKeyer) chip programmed by Dale N0XAS #65215 which is available for slightly more than a dozen KK donuts, including a free upgrade warranty.

<http://www.botkin.org/dale/pic_keyer.htm>

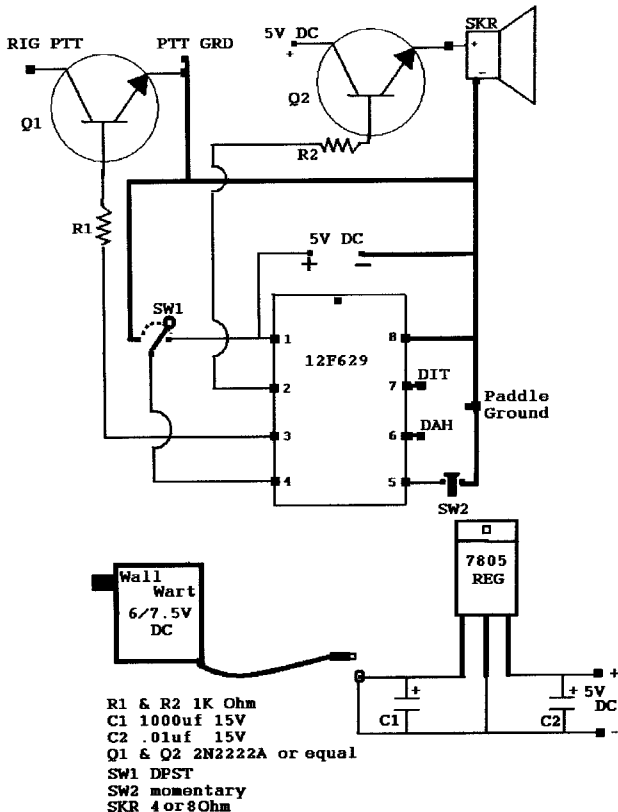
**fig 1**

Figure 1 is the schematic of my "junk box" construction built to support the PIC chip. All of the components are "generic" in variety, but a kit of the board components is available when ordering a PIC.

Looking at figure 1 upper left, Transistor Q1 is used to ground the PTT circuit which switches the rig to transmit mode. The transistor conducts when a signal is received from pin 3 of the PIC chip.

Upper right is the Q2 Transistor, which amplifies the small signal of the PIC chip to drive a speaker. The PIC chip will drive a piezo speaker without additional amplification. This "sidetone" can be turned off for beacon operation.

Mid left is SW1. This is a "double pole single throw" switch for grounding PIC chip pin 4 for beacon operation. The pin 4 is connected to pin 1 for the recording of the beacon message.

continued on page 19...

BEACON-EER...

Center is the connecting point for power. The chip will operate on 2 Volts up to maximum of 5.5 Volts. The lower drawing is how I supply the operating voltage. When power is first applied, a "73" will be heard via the speaker.

Mid right figure 1 is the connection for a "paddle" used for recording the beacon message to memory. I use a stereo phone jack so the paddles can be removed during beacon operation. I connect the "tip" to the "DIT", the "ring" to the "DAH" and the "Ground" to the common. However, the left handed or right handed keying can be changed during the "setup" menu.

SW2 is a momentary switch used to access the PIC chip menu options. When the switch is pushed and held in, the "audio" menu will be heard via the speaker. There are nine menu selections including "speed", "sidetone", "memory" and "beacon delay". The beacon delay can be up to 99 seconds between messages. Most beacon operators choose ten or less seconds.

Things to consider if the propagation beacon is to be effective.

- > Use an Omni directional antenna
- > ID often - like every 10 seconds
- > Run ten Watts or less
- > 24/7 operation - even in "low" of cycle.
- > Avoid a "key down" transmission - use a "T" or "E" instead (Intruder heterodynes and key down sound just alike)
- > 10 WPM or less
- > A distinctive keying or message helps copy
- > No long gaps between signals

Frequency selection considerations

- > 2 KHz is a spread that can be copied.
- > Individual beacons should avoid IARU 28.200 frequency
- > East coast beacons should be different from European beacon frequencies
- > West coast beacons should be different from Asian beacon frequencies
- > Central beacons should avoid South/ Central America beacon frequencies
- > Peter Jennings AB6WM IARU Region 2 Beacon Coordinator is the person to contact before activating a beacon signal

In case a person hasn't noticed, ten meter propagation has really been "spotty" recently. As ten meter Ops, it certainly helps to know WHEN and WHERE these "spots" are.

Yes, Cycle 23 is losing ground fast - propagation wise - and beacons ARE the "real time" propagation predictors.

An Adventure In Mobile Contesting

March 15, 2003 the first ever mobile contest was hosted by 10-10 International. Propagation left much to be desired for some stations because we had started the downturn of the sun spot cycle. Some participants would later report that it was difficult to find a dozen contacts all day long, while others were kept very busy trying to drive and also answer all the stations calling them.

A few lucky contestants managed a contact or two shortly after the event began on Friday evening at 0000Z but the activity was meager, and the real activity did not begin until about 1800Z on Saturday.

K1IEQ opened the fireworks as he crossed Vermont, handing out counties as he went. K7QXG, who was in Deschutes county Oregon at the time, called Ken many times, but got no response. Shortly after, two or three stations managed a contact with K7QXG. The time was about 1700Z.

After a long drive on a winding road, Central Oregon forests, K7QXG came to the Lake/Klamath Counties line. A large sign marks the dividing point and there is a pull out for vehicles. The activity began to pick up and K7QXG finally managed a contact with K1IEQ who was still racing through the Vermont counties.

The activity from this location began to die off, and K7QXG left this area and moved out into the open High Desert country of Central/Eastern Oregon. Here the propagation began to heat up.

At one point, the road split, and no road signs indicated which direction K7QXG needed to travel. Never mind, N5MT came to the rescue. By providing N5MT with information about the area and the roads, Mike was able to tell K7QXG where he probably was located. Before leaving this pull off area, K7QXG managed a contact with N1API.

Meanwhile, as K1IEQ progressed across several counties, and K7QXG plunged even deeper into the Oregon High Desert country, KC8RRO was becoming very popular as he traveled across many Michigan counties. In fact, he would give out contacts from 9 Michigan counties before the contest ended. Remember, those nine were added to his list of counties worked to reach his total multiplier! The most "traveled" member was NA5TR who operated from 11 counties!

Meanwhile, N0WY and N0TW were in the midst of the fray. N0WY was parked on a two county line and N0TW sat astride a three county junction...a feat he would

repeat at another three county junction later in the day.

Down south, in California, W5FBK was heating up the airwaves. And in New Mexico, a really big score was in the making by WD5ACG who was handing out 3 counties at a time from his three county junction. Up North, WA2SUH was making contacts from his own 2 county line. Down south, WD4GEO gave out counties from a two county line.

In Montana, AD7GP and friend, of the Lilac Chapter, were handing out five contacts at a time...their own 10-10 numbers, plus those of the two Spokane area clubs, plus that of W6OI. K7QXG was never able to hear them, even though he tried from several vantage points.

At about 1945Z, K7QXG and his XYL Shirley, who was his faithful navigator, pulled into the desert town of Christmas Valley. It was lunch time, and they soon spotted a dusty little café along the desert highway.

Christmas Valley is a blend of the Old West frontier and the New West frontier. Everywhere, whether at church, the grocery store, or the café, there are many, many pickup trucks with at least two rifles hanging in the rear window. K7QXG's pickup stood out like a sore thumb...he had no rifles, only antennas!

One person commented that all those antennas made the pickup look like a fishing trawler. C'mon now, there were only 4 antennas: A Hamstick for 10, another for 20, a small whip for 2 meters, and the regular AM/FM auto radio antenna.

In the dusty café, Bob and Shirley were greeted by the locals with long, hard, cold stares. After a few minutes, the conversations in the café returned to normal, discussing politics, the merits of cable TV, the price of wheat, etc.

After lunch, Bob and Shirley headed East across the desert in an effort to intersect highway 395 and to enter Harney county. The highway went on for ever and ever. At one point K7QXG commented to N5MT that he thought he may be lost. Highway 395 was nowhere to be seen, and the open desert stretched for miles. However, the propagation from Lake county was great, and Bob continued to make contacts.

The afternoon continued to heat up with contacts by WA6MBL and VK4EJ building up nice scores. K3ESS was heard, and N2MH and KH7B were both worked from the Oregon desert.

At long last the Harney county line was reached, and not much later a pull out spot was found. That was when the pile up hit. K7QXG worked them as fast as he could, while trying to be polite and add a little personal touch to each contact. Meanwhile KC8RRO and K1IEQ were still blazing away. Down south, N5MT kept plugging

away, and WD5ACG was still dishing out contacts.

About 2200Z, K7QXG had left highway 395 and was headed West on highway 20, returning towards Bend, Oregon and Deschutes county. There is a great deal of western history in this area, and especially much about the Bannock Indian wars of the 1800s. Bob and Shirley took a breather to learn a little about the area at a refreshing location near a roadside pond... just as a large storm blew into the area. Wind, sleet, and rain.

A quick conversation with N5MT, and a scrutiny of two maps, indicated that K7QXG would come within 2 miles of Crook County Oregon just about 8 miles down the road from Brothers, Oregon (population 2). Once more underway, K7QXG stopped briefly in Brothers, Oregon, and then began the search for the gravel road.

It was easily located. It was a very good dirt and gravel road, well marked, and easy to travel. In a little over 2 miles K7QXG crossed the Crook County line. It was around 2230Z. N5MT was waiting. A contact was also made with KC8RRO and with N1API. Then nothing.

After a brief period, K7QXG retreated back to the highway and continued west into Deschutes County, picking up a contact or two, and more rainstorms. Then, horror of horrors, the darn windshield wipers quit working! An attempt to repair was made, but no luck. It was 2315Z, and Bob and Shirley were on the outskirts of Bend, Oregon. The rain stopped, Bob turned the radio off, and they drove on. Midway through Bend, the wipers resumed working. It was about 2350Z and Bob turned on the radio long enough to manage one or two more contacts before 2359.

K7QXG continued South to the Sun River resort where they were staying and met there with many family members to celebrate this 300 mile adventure.

K7QXG used an ICOM MKIIG, 100 watts, into a Hamstick 10-meter antenna mounted on the pickup box near the cab.

I hope everyone had an exciting adventure during this event. My plans to continue driving through Grant, Wheeler, and Jefferson counties were cancelled because there was not enough time left in the contest to do it.

An analysis of this event has been provided to the Contest Committee Chairman, the Operations Committee Chairman, and the President. They, and the BOD, will decide whether there is sufficient merit to hold the contest in 2004.

73, K7QXG, Bob
Dallas, Oregon

An-Ten-Ten-nas

INFORMATION
TO HELP YOU DECIDE
ON THE BEST ANTENNA
FOR YOU

L. B. Cebik
W4RNL #41159



In each issue of the News, we shall try to clarify a significant cluster of ideas used in antenna work. Our object is to help you make the best decisions about the antennas you buy or build without imposing our own prejudices on you. The more you understand, the better your choices will be.

No. 40: More Frequently Asked Questions

The frequently asked questions that we shall examine in this session related to beam antennas, most of which are varieties of Yagis. On ten meters, we find a variety of beam construction methods and a variety of matching systems. So our questions tend to relate to these two topics.

1. Which is better: elements that attach directly to the boom or elements that are insulated from the boom?

Like many frequently asked questions, this one contains an ambiguity, since the question does not refine the idea of being better into some specific set of concerns.

a. With respect to performance, when the element lengths are suitably adjusted, there is no difference in gain, front-to-back ratio, pattern shape, or feedpoint impedance between a beam with elements directly connected to the metal tube forming the boom and a beam with the elements insulated from the boom.

However, the element lengths required for a given set of performance figures will not be the same for the two methods of construction. Elements that are fully insulated and spaced by a non-conductive plate away from the boom will be the shortest. Elements attached to metal plates that are U-bolted to the boom tend to be the longest, since the plate acts as a short, fat portion of the element.

These rules of thumb apply to elements that otherwise have the same lengths of tubing forming the element's decreasing diameter away from the element center. As we saw in a recent column, these "tapered-diameter-schedule" elements tend to be longer already than elements having a constant diameter. In both cases, the degree of length change from an ideal insulated uniform-diameter element is a complex affair to calculate, and Yagi design software is the best way to redesign one system of construction to another.

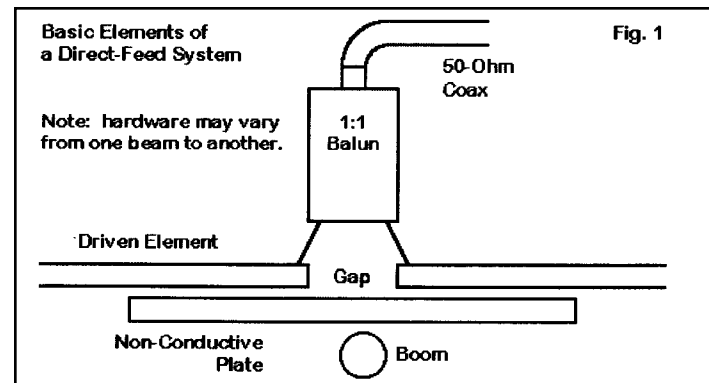
For any beam with more than 2 elements, trying to field adjust the elements to the required lengths often leads to frustrating exercises in sliding tubing and to relatively poor results. The final suggestion, then, is that the backyard builder should use the exact techniques specified in a design being copied unless the builder has considerable experience in redesigning Yagis.

b. The Yagi with element connected directly to the boom has a slight advantage in terms of noise and discharge of static build-up on the elements. The boom is connected to the mast and the mast to a grounded tower. Therefore, when the elements are connected to the boom, static charges bleed off the elements as the wind and other weather phenomena create them.

Insulated elements can build considerable static charges over time. We can discharge them by connecting a high-value resistor (about 5,000 Ohms or more) or an RF choke (100 microHenries or so) between the element center and the boom.

2. What does it mean to say that a certain Yagi design uses "direct feed?"

Although many Yagi designs in current use have feedpoint impedance running from 20 to 30 Ohms, it is possible to design a high performance Yagi that shows a feedpoint impedance of 50 Ohms. In this case, we do not need a matching network, since the feedpoint impedance is the same as the characteristic impedance of the most common coaxial cables.



However, we do have some constraints when using a direct feed driven element, as shown in Fig. 1. Regardless of the construction methods used for the other elements, the driven element must be insulated from the boom. The driven element must be split at the center to create a gap similar to what we find in a common wire dipole. The size of the gap is not critical at 10 meters and might range from 1/4" to 1".

We connect the inner conductor of the coax to one side of the element, and the braid to the other side. Hence: direct feed.

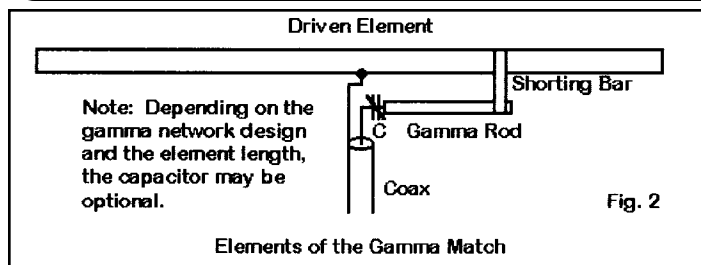
Since the coax is an unbalanced line and the Yagi driver is balanced, we can encounter radiation currents on the outside of the braid. To suppress these currents and maintain a good pattern with no radiation from the feedline, a 1:1 balun is a useful device to insert between the element terminals and the coax line. Bead-type balun chokes are the lightest and work well in this application. We can often use coils of the coax feedline to perform the choking function. Recommended coil sizes appear in The ARRL Antenna Book.

Some Yagi designs using direct 50-Ohm feed have broader operating bandwidths than Yagis with lower feedpoint impedances. As well, the feedpoint losses are often less. Every connection represents a small loss, since the connection of one part to another will not have precisely zero Ohm resistance. When we lower the feedpoint impedance of the antenna, these resistive losses will be a higher percentage of the total impedance (the sum of the natural radiation resistance and the loss resistance) than when the radiation resistance is higher. As well, direct-feed systems usually have fewer connections than low impedance systems with matching networks.

3. Which is best as a matching system for a Yagi: a gamma, a Tee, or a beta match?

Once more we have an ambiguous question, the simplest answer to which is this: it all depends. . . The first consideration is whether a matching system is needed. If the Yagi has a feedpoint impedance well below 50 Ohms--say in the 20-30 Ohm range, then you will need a matching system. There are many fine Yagi designs with feedpoint impedances in this range, so understanding a little more about matching systems is wise.

a. If you are determined to use a direct connection between the driven element and the boom, then you will need to use either a gamma or a Tee match. (There is also a more complex form of the gamma called the Omega match, but we can bypass it in these brief notes.)



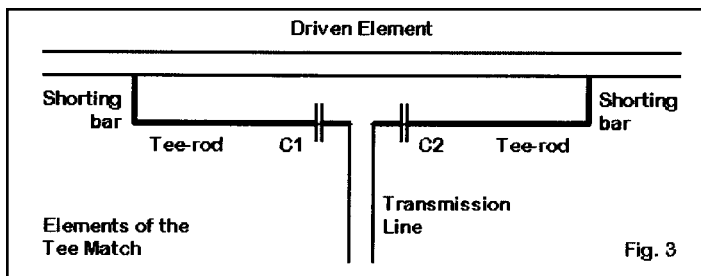
The most commonly used matching network for home-built Yagis is the gamma. As Fig. 2 shows, it consists of a line in parallel with part of the element and connected to the element. We add a series capacitor between the coax center conductor and the gamma line. By adjusting the line diameter, spacing from the element, length, and the capacitor value, we can arrive at a good match.

The number of elements playing a role in the gamma match system makes hand calculation of the dimensions very tedious. There are computer programs that can put you in the ballpark and ease the adjustment. The first step is to reduce the length of the driven element to make it capacitively reactive, which often allows us to omit the capacitor.

As a starting point, make the gamma rod or line about 1/3 to 1/2 the diameter of the driven element itself. Then the line can be about 0.04 to 0.05 wavelength long and spaced (center-to-center) about 0.007 wavelength from the element. The capacitor should be about 7 pF per meter (about 70 pF at 10 meters) for a resonant driven element with an impedance of about 25 Ohms.

If you use the capacitor, alternatively adjust the length of the gamma rod to the shorting bar to the main element and the capacitor until you obtain the best match. Replace the variable capacitor with a fixed capacitor. If you omit the capacitor, adjust the length of the gamma rod to the shorting bar and the length of the element until you get a perfect match.

b. The gamma match can produce some distortion in the beam pattern, since it is an unbalanced system. The distortion has shown up more at VHF and UHF than at HF, but 10 meters is just on the cusp of the VHF region. Therefore, some beam builders prefer to use a Tee match. As Fig. 3 shows, the Tee looks like a double gamma and still permits a direct connection between the element and the boom.



Tee match calculations are not just simple adjustments of gamma calculations. One Yagi optimizing program (YO by K6STI) has a Tee-match calculating module, and it allows you to either use the series capacitors or to omit them--although the Tee rods will be different for each case.

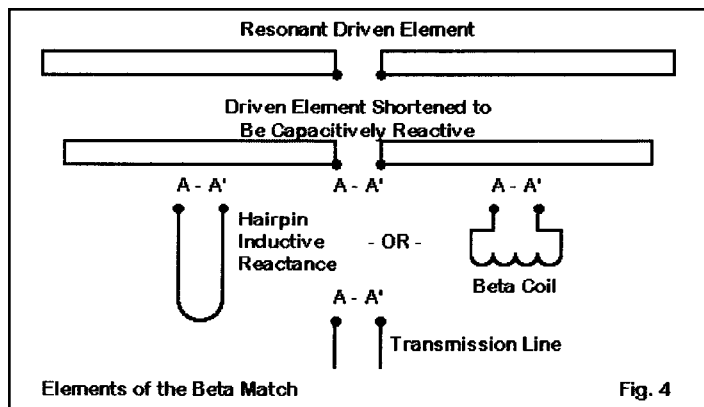
Some builders use the Tee match not only to obtain a good match but also to raise the feedpoint impedance to 200 Ohms. Then they place a 4:1 balun at the feedpoint to arrive at the coax 50-Ohm impedance.

As a balanced matching system, the Tee match avoids potential pattern distortions. However, it is the most complex of our matching systems and requires considerable patience to adjust.

c. The simplest balanced matching system is the beta match. We have taken a long look at the beta match in past episodes of this column. Essentially, we shall form an L-network to transform a low antenna impedance to the higher coax cable impedance.

The L-network requires a series capacitor on the low impedance or antenna side. We form this by shortening the element from its resonant length, thereby making it capacitively reactive. Then we add a shunt or parallel inductive reactance across the terminals--effectively on the coax side of the network.

As shown in Fig. 4, we can use either of two ways to obtain the required shunt inductive reactance. One method is to make a length of parallel transmission line with a short at the far end. A shorted transmission line less than 1/4 wavelength provides inductive reactance. The amount depends on the wire spacing and diameter, as well as the line length. This is the so-called "hairpin" matching device.



The other method uses a coil--wound to provide the inductance that has the required inductive reactance. Either method will do the job. The coil has slightly higher losses than the shorted transmission line hairpin, but provides a slightly wider operating bandwidth. The short at the end of the hairpin can float or you may ground it to the boom--there should be no difference in performance either way.

L-network calculations abound. One convenient program for calculating a beta match while evaluating your antenna design is YW, a program accompanying *The ARRL Antenna Book*.

The beta match does require that the driven element be insulated from the boom and have a center gap for the connections.

4. What is the best way to make adjustments to my Yagi and its matching system?

Only a few hardy folks who love working at heights enjoy adjusting a Yagi at the top of a tower. To make the initial adjustments on a Yagi, we can work closer to the ground, using a stepladder at most.

Mount the Yagi pointing straight up. The reflector should be about 5' to 10' off the ground at 10 meters for best results on the widest variety of designs. You can jury-rig an assembly to support the beam while you do your work. Just be sure to move yourself and your ladder well out of the way when making measurements to test your adjustment work. Indeed, the test site should be as much in the open as your situation permits.

Adjustments made by this system should hold if the antenna is a half-wavelength or higher in its final position. The higher the front-to-back ratio of the beam, the better the system will work, since a high front-to-back ratio minimizes interactions with the ground. This adjustment system does not give 100% assurance that you will not have to make further adjustments when you get the beam mounted at its operating height, but it should handle 90% or more of the cases and the work.

Hopefully, these brief answers to frequently asked questions will get you started toward better antenna building. As I have noted on several occasions, if you plan to roll your own antennas--whatever the type--or if you simply want to understand antennas better, make sure that you have a copy of *The ARRL Antenna Book* on your shelf--or better, on your work bench opened to a relevant section.

by Dave Smith, K6RDK #65812



Reports Due This Quarter: City of Lights, Concho Valley, Cowtown, Electric City, Fort Mchenry/Cornerstone/Yodar Kritch, Gateway, GB Ten, Michigan Robins, Milwaukee, Neanderthal Chapter, Outlaws on Ten, Tango

In Extremis:

REMINDER - To remain affiliated with 1Ø-1Ø International, all chapters must fill a chapter report at least once each year. This information is used to update the 1Ø-1Ø Awards guide and the monthly Guide updates. We don't want the membership wasting their time and money on a chapter that is no longer active. If the name of your chapter appears above, please advise the Chapter Coordinator if there has been a change in status of the chapter.

Chapters wishing to file the Quarterly Report on line may do so: email me (k6rdk@arrl.net) for the link. Once the initial form is filled out I will make a customized form with your default information fields already populated. If there are any changes just make them and let me know in the comments and I will change the form.

.....

Oklahoma Route 66 Chapter - Oklahoma Route 66 Chapter is a newly affiliated chapter. The CH is Jim Richardson, N5OHL, 1810 NW 18th St, Oklahoma City, OK 73106. The basic requirement for membership is to work ten 10-10 members along or near the Historic Route 66 in Oklahoma. The certificate fee is \$3.00, There will not be complex point system.

Chapter News:

Colorado Frontier Gang - New Email address effective June 30th for Eva WB0CON, wb0con@comcast.net. This will be for upgrades as well. Web pages to follow.

The format has not yet been finalized but any station who would like to take part is welcome and they could notify me or G4PDR and we would contact them nearer the date.

We have updated our hosted web site and you can now find information about our chapters' history and from the nav bar you will find the information about our certificates. You can also view the certificates and can in fact download them in pdf format to fill in for your self, this will save you from buying originals you can fill in your own. The address of the web site is <http://www.raynet-forestheath.info> click on the GBTENTEN CAT and go to the Mancunium front page.

Mont-Ventoux - After 20 years the Mont-Ventoux Chapter of the 10x International has decided going QRT due to the lack of interest.

Many thanks to all who give us support over the years.
F6BXO CH/CM

Oceans Of The World - New addresses for Don KA4RVZ and OTW; Email ka4rvz@verizon.net, chapter Email ootw@verizon.net and OTW home page <http://mysite.verizon.net/res603py/oceansoftheworld>

Restoration Project/Feline Friends - New Email address for RP & FF upgrades CATSNCAR@telus.net

Springbok - Starting on June 1st 2003, Springbok will run a special. It works like this, every Springbok member will become a SIQ (Special Instant Qualifier). Any SCI member that brings a new member in will be given a 100 point bonus. If they bring in 10 new members that will equal 1000 points, if they are already a SQ - IQ - or FM they will get the 100 point bonus plus the regular 25 points for each new member or 125 points. It hoped you will pass this along over the air so we can reach as many members as possible. This special will run from June 1st to June 30th 2003 only. This is being run because of the 10-10 Convention in Texas.

10-10 INTERNATIONAL NEWS

List of chapters that accept Email upgrades (Current as of 01 May 03)

All of the listed chapters generally need previous, new, and total points and seals claimed. Any transaction with the CM that requires that a certificate be issued, and most worksheet specials should still be handled via US Mail. Also to be on the safe side, a detailed listing of the upgrade should be kept in the event that the CM should require verification. Requirements peculiar to a particular chapter are noted below. To be added to, deleted from, or make changes to the following list of e-mail up-graders must be made in writing or e-mail communication between the Certificate Manager and the Chapter Coordinator.

Battle Road - CM K1IEQ, k1ieq@juno.com
Bauxite - CM K5BKT, k5bkt@nwla.com - Bauxite and Arkansas Visitor #s only
Bay Area - CM AC6FU, ac6fu@arrl.net (Bay of Bridges)
 All others to K6RDK, k6rdk@arrl.net
Boomtown - CM N5EBA, ed_cisse_neal@yahoo.com
Bounty Hunters & Outlaws on Ten - CM WD5EDR, wheberling@satx.rr.com
Branding Iron - CM KA5VVD, xit@seacove.net
Branding Iron II - CM N5XJD, n5xjd@seacove.net
Cast Iron Tower - CM DL5DXS, dl5dxs@web.de
***Castle Craig** - CM N1API, n1api@cox.net
Colorado Centennial - CM N0CKW, chalice@attbi.com
***Colorado Frontier Gang** - CM WB0CON, wb0con@comcast.net
Colorado Quarter-Master - CM KC0CMZ, kc0cmz@qrzdx.com
City of Roses/Portland Bridges Award - CM KD7UZ, kd7uz@arrl.net
Cypress Chapter - CM WA2YZM, wa2yzm@qsl.net
Down Under - CM ZL1KQ, via zl1kq@clear.net.nz
Electric City - CM WA2OIZ, istillwell@cfl.rr.com
Fort McHenry (including Cornerstone & Yondar Kritch) - CM K3TUI, k3tuj@juno.com
GB Ten - CM G4KHF, gbten@globalnet.co.uk
Great Lakes - CM WA8OXS, wa8oxs@juno.com
Houston S.H.O.T. - CM N5AFV, afmattis@hal-pc.org
Kansas Trails - CM KB6UPG, kb6upg@willmar.com
***Keystone** - CM KA6GPC, ka6gpc@aol.com
Lake Geneva - CM W4KM, w4km@cox.net
Laurel Mancunium - CM G3RRM, g3rrm@aol.com
Major League Baseball - CM KC2GCL, kc2gcl@aol.com
Mississippi Lighthouse - CM N5LBZ, stuartac@earthlink.net
 all applications for certificates and upgrades are requested to be sent via email if possible. See my web page for further info at <http://home.earthlink.net/~stuartac>
Neanderthal - CM DL2KG, dl2kg@qsl.net
New Mexico Mud Duck - CM KM5EH, km5eh@arrl.net
***New Waterkant** - CM DK7LA, dk7la@t-online.de
***Oceans of the World** - CM KA4RVZ, ka4rvz@verizon.net
Old Ironsides - CM WA1ENO, wa1eno@hotmail.com

Peshtigo Fire - CM W9BLI, w9bli@itol.com - points and seals upgrade submit total, new, and previous also need total contacts for chapter

Portland 5000 - CM K7POS, k7pos@arrl.net

***Republic of Texas** - CM WD8JKV, rayjkv@netzero.net

***Restoration Project/Feline Friends** - CM VE7ACM, CATSNCAR@telus.net

Route-66 - CM KA9ADD, ka9add@qsl.net

Samuel Clemens & King Arthur's Court - CM WA2YZM, wa2yzm@qsl.net

Santa Fe Trail - CM KB0ON, kb0on@hoosierlink.net

Sky Blue Waters/Tin Lizzie - CM WB0RCC, cedwards@isd.net in addition to old, new and total points.

Submit total contacts, basic number(s) with current point value, 10-10 number with date of expiration.

South Texas Lighthouse Brigade - CM N5DAS, n5das@juno.com. Submit old, new and total points, total contacts, and date of issue of original certificate.

Steel City - CM KE9WZ, ke9wz1@netzero.net

Trail Drivers - CM N5SCA, n5sca@ltex.net

Twin Cities - CM K0DBK, k0dbk@arrl.net

These addresses are as current as the information you provide. If there are any additions, corrections or deletions this list please contact the NEW Chapter Coordinator, K5FBS Cliff Taylor via email at catk5fbs@aol.com

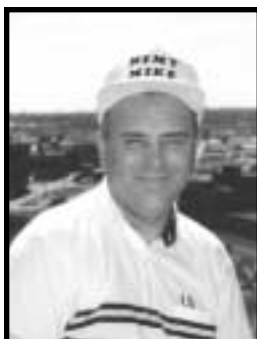
This column must be in to the editor of the NEWS no later than the first of the month of March, June, September, and December. So in order to make the deadline and if you want your chapter information in the current issue, it needs to be in hand by the 20th of February, May, August and November. Often chapter news or special information is received too late to make the issue on a timely basis. The column for the January issue for instance must be submitted to the editor on the 1st of December. So if your special is to run 1st through 31st December, it should be in hand prior to 20th August to be in the October issue, as the following issue of the News will not be out until January after your special is over. Chapter information is printed on a space available basis; sometimes not all information received can be printed. The deadline for the next issue of the News is the 20th of August.



**SUPPORT A
STUDENT TODAY!**

**DONATE TO THE
TEN-TEN
SCHOLARSHIP
FOUNDATION**

SEE PAGE 22



Mike Davidson
N5MT #24949

I have just updated a list of 10-10 countries worked and they are listed next in order by recognition sequence: **#304 - 3W2LWS Vietnam; #305 - FO0FRY Austral Island; #306 - VP8GEO S. Georgia Island; #307 - XR0X San Felix Island; #308 - VP6DI Ducie Island; #309 - P5/4L4FN North Korea; #310 - Congratulations to Mike Warnock K7XN #41483 who submitted a first country QSL card from the April 2000 Pratas Island BQ9P DXpedition. This brings to 310 countries documented with 10-10 activity, a new record!**

There are three countries pending QSL confirmation. I have worked all three and expect QSL verification soon. **VK9YL Lord Howe Isl.** by June **VK4SJ #63451** was worked in September 2002. **3C2MV Equatorial Guinea** by Vitaly **VE6JO #35994** was worked in November 2002. **TX4PG Marquesas Isl.** by Andrea **IK1PMR #62272** was worked in early May 2003. Twenty-eight countries remain that have NOT had any 10-10 activity as of June 2003.

I have not received any reports of a member operating from YI Iraq the past two months. Activity may come from Peter **ON6TT #51565**, Mark **ON4WW #49103**, or Ed **4L4FN #72722**, as time permits. Some of you will remember that a club station **YIIBGD #38353**, is located at the Baghdad University which has reopened. I do not know the status of the club station but it has been the only native 10-10 member in Iraq since August 1985.

Pat **9Q1A/F6BLQ #66013** and Nicole **9Q1YL/TU5NC #66012**, will be leaving from the **Democratic Republic of Congo** June 1st. They have made 35,000 contacts from Kinshasa and Matadi over the past twenty years in Africa. They expect to return to their home in France in mid-June.

General 10-10 DX worked in the past quarter:

DP1POL Antarctica. Felix **DL5XL #55519**, has been very active from a German Antarctic research base since February and will leave in November 2003. Counts for IOTA AN-016. QSL to DL1ZBO.

HC8 Galapagos Islands. Diego **LU8ADX #64639**, was active as HC8/LU8ADX in March. He joined the team

of Trey **N5KO #26780**, Ken **K5KA #18074**, and Eric **NM5M #15664**, in the CQ WPX Phone Contest as HC8N.

HH4 Haiti. Jan Heise **K4QD #13423**, Bob **K9MDO #24292** and Bill **W4WX #62600** were worked in March. Website address: <http://www.geocities.com/n2wb2003/>.

HU1M El Salvador. Operators Holger **DL7IO #22401**, Birgit **DL7IQ #62276** and Cisco **YS1CF** were active from March 26th to April 11th using the special call HU1M. I put both Birgit and Holger in my log for a new prefix and IOTA NA-190 as HU1M/3. QSL via DK7AO.

KH3 Johnson Island. Bert **V73GOD #72117**, was back at Johnston on a short work assignment March 18-20th. Club station **KJ6BZ #45849**, was used for a few contacts.

OY Faroe Island. Tom **OY7TW/GM4FDM #31864** and Bill **OY7WB/AK0A #13996**, were active from April 1st for ten days. Very little ten-meter activity reported.

S0 Western Sahara. The **S05X DXpedition** was active from April 16-21st, from Tifariti, Western Sahara, on all bands and modes. The only 10-10 member in this group of eleven operators was Marq **CT1BWW #64689**, who made it in my log both modes for a new one on Ten.

ST Sudan. Falk **DK7YY #23467** operated as one of the operators in the March DXpedition with call **STORY**.

TI5 Costa Rica. Phil **N0KE #15182** was active as **TI5/N0KE** in April using CW and RTTY.

YB Indonesia. Stan **OK1JR #20103**, as **YB0AJR** operated from March to May 6th. QSL via OK1JN.

ZA Albania. Elvira **ZA3/IV3FSG #54292** (28490 at 1300utc) and Antonello **ZA3/IK2DUW #18397** (on RTTY), worked from Durres from May 25 to June 8.

ZK1 South Cook. June Sim **VK4SJ #63451** and her husband Doug **VK4BP/ZK1SIM** were on the island for radio and fun. They had just come from Aitutaki Isl. OC-083 and then Rarotonga where I worked June as **ZK1AYL** on May 21st. Unfortunately, Doug was in a fatal motor scooter accident and died on South Cook. June has since returned home where they had Doug's funeral. My deepest sympathy to June for her loss.

Upcoming DX & New 10-10 Activity:

7P Lesotho. Andre **ZS6WPX #73604**, Frosty **K5LBU/7P8CF #51322**, and Tom **WW5L/7P8TA #41485** will be active from July 18-25th. They will use tri-band antennas for 10-20, a WARC antenna, a vertical and dipoles for 40->160. They have just added a satellite radio and antenna. QSL each callsign at their home address.

CY9 St. Paul Island. CY9A will be active July 24th to August 2nd by Vance **N5VL #63352**, Joe **KO4RR #46176** and others. Last year in July, I worked them backscatter for

a new 10-10 country. Good luck. QSL via N5VL.

FP Miquelon. Paul FP/K9OT and Peg **FP/KB9LIE** #69937, are planning their third DX vacation to Miquelon from July 27th to August 5th. <http://www.mhtc.net/~k9ot>.

HV Vatican. Stefano **IK0OER** #62293 was active from the Vatican as HV5PUL last year. This call only transmits twice a year for a few days in May and November.

VK9C & VK9X, Cocos-Keeling & Christmas Island. The YL's who operated VK9YL and ZK1XYL last year, namely Gwen VK3DYL, June **VK4SJ** #63451 and Elizabeth **VE7YL** #50488 who was the main CW op, will now operate from Christmas Island as VK9XYL, October 13th to 27th, and from Cocos Keeling as VK9CYL, October 27th to November 10th. This is rare 10-10 DX, good luck.

VP2 Montserrat. Members of the Florida DXpedition Group are Bill **W4WX** #62600, William N2WB and Bob **K9MDO** #24292 will use VP2MHX from July 22-29th.

XE Mexico/Central America/South Pacific. Susan Meckley **W7KFI** #72973, started a 3-year DXpedition to Central America and the South Pacific. She is presently off Mexico signing W7KFI/mm heading south. Rig is an FT-847 with two 32 foot pop-up masts and all modes.

Propagation: In the USA, the Summer months, give us the worst DX period, until the Winter returns. My six-month prediction is for the Solar Flux to range from **90-140** for the last of 2003. We have moved into Phase 3 with lower flux readings and fewer openings to Europe for the next few years until the cycle ends in late 2006 or early 2007.

Cycle 23 is now 6 years old. The flux continues to stay moderately low but more good DX will be seen this coming Winter 2003, but just not as good as last year. **On June 5th, the Solar Flux was 112 the A index 16 and K index 4,** which is lower than the flux was three months ago and the average flux continues to fall.

Expect the best conditions on June 22-24, July 19-21, August 15-17 and September 11-13, 2003. USA stations, expect a 10% chance of DX to Asia, Europe or Africa and a 40% chance into S. America in the mid-afternoon. The beacons from **28.175-28.300** will tell you what is open, especially 28.200. Good luck.

IOTA: North America: NA-106. **KP2 Puerto Rico.** Richard **KC2CT** #8549 ex.KB7MPS, was active from his car on March 17th. He has moved to the island so expect him to be active with a permanent station soon. NA-067. Lee **W4ALZ** #72731, was active from Hatteras Island on April 21-24th. NA-076. Ron **N4KE** #5645 was active as WA4ET from Havens Island in April 2003.

Cayman Islands. NA-016. The team of Ned **AA7A** #11185, Lee **KY7M** #38585, Bud **N7CW** #10375 and John

K6AM activated ZF1A in the CW WPX Contest.

S. America: HK Columbia. SA-082. Pedro **HK3JJH/2** #47437 is now working Europe as reported by G3XPO.

Oceania: KH9 Wake Island. OC-053. Jake **KH9/N6XIV** #54767, is once again operating from Wake Island starting on April 22nd for possibly up to 60 days. **YB Indonesia.** OC-241. Kadek **YC9BU** #71300 and others plan to be active with a new prefix as 8A9R from Rote Island for about 10 days in mid June.

Europe: I Italy. EU-051. Andrea **IE9/IK2XDE** #66082, and Giovanni **IE9/IK2JYT** #25968, from Ustica Island from March 25th to April 1st. EU-031. Walter **IC8/IN3XUG** #62235, was active from Ischia Island, until April 27th. EU-083. Giovanni IZ2DPX, Michele **IK2GPQ** #55513, Antonello **IK2DUW** #18397 and Lorenzo **IK5MDF** did operate as IP1TIN from Tino Island on April 27, May 11/25 and expected again on July 26-27.

France. EU-039. Daniel F5LGQ #64684, was on Chausey Island, from April 26th to May 2nd on CW & SSB. EU-048. A group of operators including Jean-Paul **F8BJI** #71704, was active as TM7R from Groix Island in May. EU-074, Jean Claude **F5IL** #32916 and friends, will be active from Brehat Island June 6-9th.

9A Croatia. EU-090. Tony **9A/IK0GDG/P** #45823, was active from Palagruza Island on April 20-21st.

Africa: AF-019. Francis **ON6VP** #36115 and friends, were active as IG9/ON4DST from Lampedusa in May.

Note: Information on IRCs/US\$ needed for postage to the USA is at: <http://www.qsl.net/w9ol/ircchart.txt>. QSL help is at: <http://files.billnjudy.com/>.

New DX members March to June 2003: 73613 VA3XCD, 73614 DK4AS, 73615 GM0FTK, 73616 M0DCS, 73617 OH3OJ, 73618 DF4NA, 73805 VE7RJH, 73816 LU4AAO, 73821 WP3OD, 73838 WH6GDV.

10-10 Bar Awards: No DX members receiving a 1000+ Bar award this quarter. **Countries Award:** There are now 595 basic certificates issued, I processed two basic certificates, nine upgrades and two rejected applications this past quarter. I can email a list of your country credits.

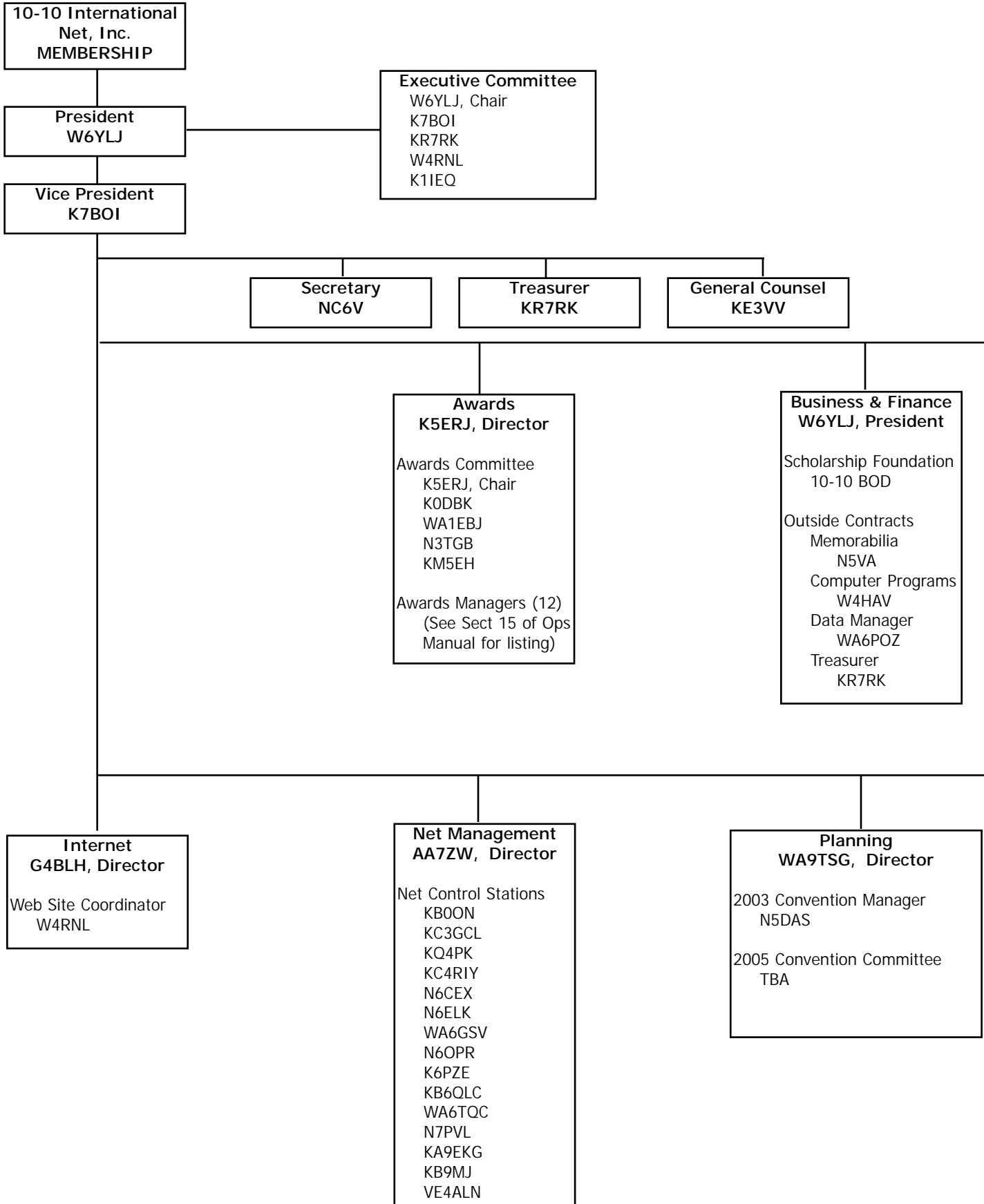
The 28555 DX Net on Sunday at 1400utc is on vacation until better conditions in late September 2003.

Thanks to the on-line DX List, QRZ-DX, Lee KH6BZF #8888 & Ohio/Penn DX Bulletins. Send photos to Mike Davidson, 3518 Bellefontaine, Houston, TX 77025 USA Email: **N5MT@aol.com**

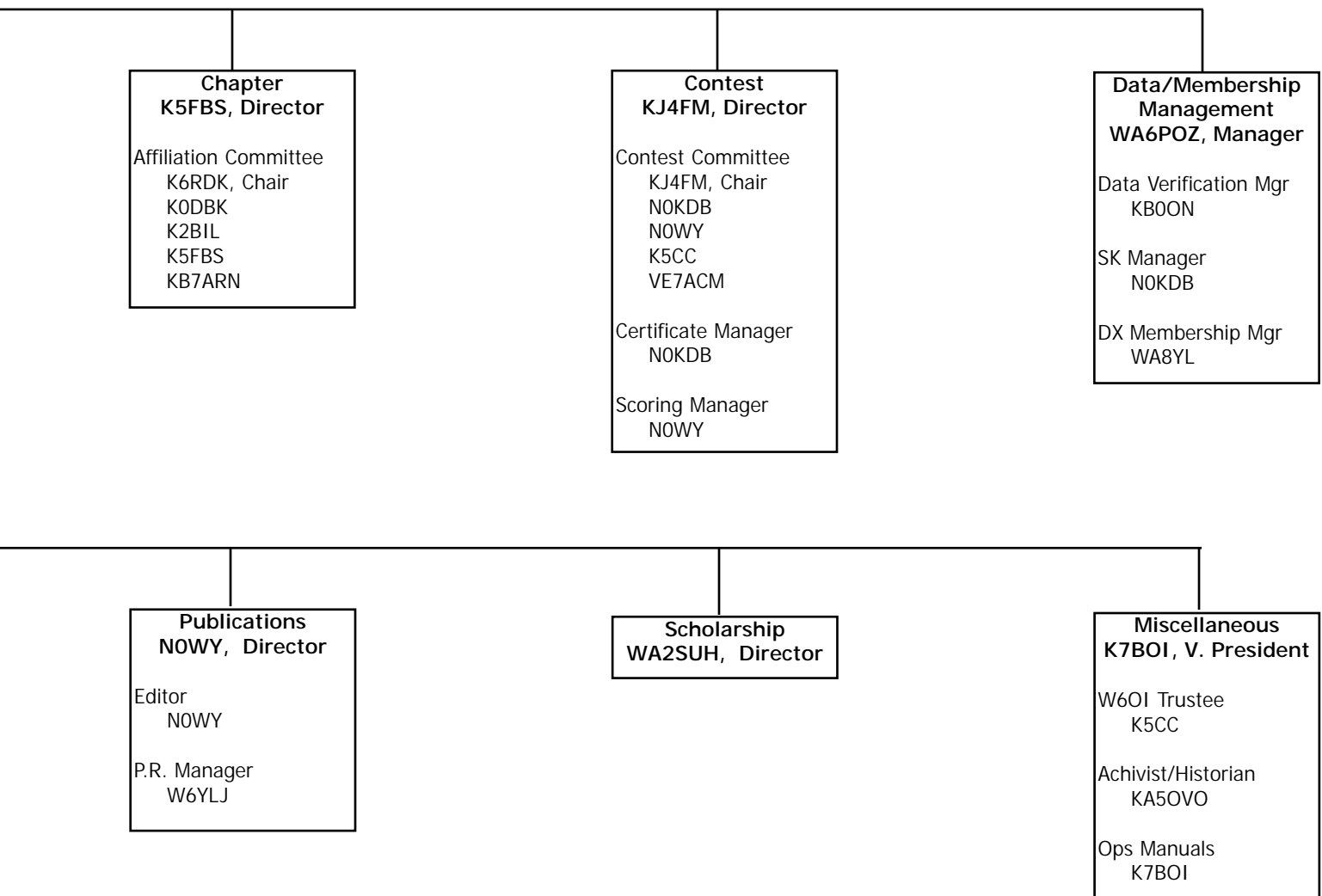
DX IS!

73 Mike Davidson N5MT #24949

10-10 INTERNATIONAL NEWS



Ten Ten International Net, Inc. Organization Chart January 1, 2003





Start 'em young!

I am sure most of you have heard "DOC" WB6OJB (old jingle bells) #70675 on the air. He is a very strong station in California when the band is up.

Every month he attends one of the local club luncheons and had the occasion to take this picture of his XYL Joani and his granddaughter Rachel. Rachel is sitting on the motorcycle of one of 10-10's loudest and longest active hams, Scotty WA6TQC #00071, who also runs the 10-10 Net on Mondays at 28.800.

As a matter of fact...

Donnie KB6QLC #42822 sent us a picture of some Southern California hospitality being handed to Jay W5QVS on a visit last Winter.

L to R: Fred AD6IG #69524 and XYL Bev, Charlie W6GCJ #03800, Ann KE6OIO #68997, Mary KA6IGQ, Scotty WA6TQC #00071, Jay W5QVS #57608, Louise N6ELK #36654, Russ N6CEX #29906, Bob WA6GSV, Bob N6OPR #45715, and Donnie KB6QLC #42822



FIRMLY Attached!!!!

If you think the beam looks a little small, it is! It's an MA5B sitting up there. In fact, it JUST got up there. Who is the big guy leaning back trying to get a little rest? It's your editor! Steve N0WY #68684. Yes, I finally got the beam up and the first contact was with Rex K0NO #20423 in Council Bluffs, Iowa. Yea, that's only about 25 miles away, but I heard him GOOD! The next contact was with Jack K5CC #50708 in Texas and I got a report of S9 from him. Much better! Used to only get an S2 or S3. Now if the bands would open back up - I'm ready!!!

Taking a trip down Memory Lane

Here is a blast from the past! Thanks to Pete KC1CP #37190, your editor has a whole bunch of pictures taken at events from 1986 through 1997. This issue we are posting some from the 1987 Shreveport convention. How many can you name? (Thanks Pete!!)



1. KB0ON, KC1CP 2. K4DDC 3. N5FJ 4. K1IEQ, KJ5L 5. W4ZAA 6. N8DCQ 7. WA6POZ 8. WA8OXS 9. WA6ZPX

Net Manager NET NEWS

BILL MARPLE
AA7ZW #62075



As I write this, the award for Net Controller of the Year 2002 is being engraved. I will present this award at the convention in June, and the next issue of the News will contain pictures and an article about the recipient. This year, we had 153 members cast their votes for the net controller they felt has made the best contributions to the organization through their efforts as a net control station. This was a very close race, and was decided by one vote! In fact, the top three were all separated by one vote each.

Next January, I will be asking for your input for Net Controller of the Year for 2003. Now is the time to start thinking about the person who will receive your vote. Check in on as many nets as you can, and then take a minute to vote. All the net controllers appreciate your participation, commitment and support. They are there day after day, including holidays, birthdays and anniversaries, contest days, etc. Show them that you appreciate their efforts by taking the time to vote.

Well, it seems that the summer doldrums arrived early this year. Even with conditions as bad as they seem our nets are still running well,

and many stations are checking in. Some days are better than others, and the numbers reflect the conditions. Alan, VE4ALN # 69217 has asked Scotty, WA6TQC #71 to help him by calling his net during the summer. Unfortunately, Alan tends to lose all propagation during this time, so listen for Scotty on Friday as well as his net on Monday. Thanks Scotty!

Special thanks go out to the following members for their efforts in acting as relay stations for net control:

George, WD4GEO #71574, Bob, W2BOC #71096, Vic, WB6GLI #4888, Hank, W3EHZ # 39561, Brian, KC7OC #67668, Larry, KA9PCU #73562, Ray, K7CWS #50288, Dan, KC8IM #31959, Paul, WN4AMO # 73825, and Joel, KO4QC #59789.

Without their help, there would have been considerably fewer stations checking in. Thanks to all for a job well done. If I missed anyone who helped out as relay stations, I sincerely apologize, and thank you for your services.

A possible situation has been brought to my attention regarding stations using CW to check in on pour SSB nets. This is something we do not recommend, as our nets are all in the SSB mode. If a net controller hears a station calling for check in CW, he/she shall advise that station to switch to SSB mode, and call again. I know that it might seem tempting to use CW to cut through QRM or pileup's, but the use of a mode other than SSB could cause an additional heavier workload for net control.

I would invite any of our members who have questions or comments on net activities to contact me direct. My information can be found on page 2 of the News.

Until next issue, I wish you good DX, and 73

QUARTERLY NET REPORT

October, November, December 2002

28.380			28.800			28.380			28.800			28.380			28.800		
MONDAY NETS						WEDNESDAY NETS						FRIDAY NETS					
DATE	TOTAL	w/o 10x#	DATE	TOTAL	w/o 10x#	DATE	TOTAL	w/o 10x#	DATE	TOTAL	w/o 10x#	DATE	TOTAL	w/o 10x#	DATE	TOTAL	w/o 10x#
01-06	21	0	01-06	52	0	01-01	43	5	01-01	27	0	01-03	44	4	01-03	44	2
01-13	30	0	01-13	47	0	01-08	24	2	01-08	54	0	01-10	55	0	01-10	43	1
01-20	20	0	01-20	56	0	01-15	44	3	01-15	31	0	01-17	39	3	01-17	59	2
01-27	14	0	01-27	46	0	01-22	47	7	01-22	31	2	01-24	58	5	01-24	29	0
02-03	9	0	02-03	50	0	01-29	29	2	01-29	32	1	01-31	35	3	01-31	34	1
02-10	81	0	02-10	62	0	02-05	35	2	02-05	44	0	02-07	60	8	02-07	27	0
02-17	32	0	02-17	46	0	02-12	50	3	02-12	50	0	02-14	47	5	02-14	31	0
02-24	23	0	02-24	44	0	02-19	60	10	02-19	36	0	02-21	45	3	02-21	34	1
03-03	46	6	03-03	35	0	02-26	43	1	02-26	35	0	02-28	62	3	02-28	38	2
03-10	17	0	03-10	31	0	03-05	48	2	03-05	44	0	03-07	62	10	03-07	20	0
03-17	30	0	03-17	47	0	03-12	46	4	03-12	50	0	03-14	33	3	03-14	6	0
03-24	1	0	03-24	11	0	03-19	25	3	03-19	36	0	03-21	50	3	03-21	17	0
03-31	3	0	03-31	33	0	03-26	12	2	03-26	33	0	03-28	3	0	03-28	20	0
TUESDAY NETS						THURSDAY NETS						SATURDAY NETS					
01-07	43	1	01-07	56	4	01-02	44	3	01-02	45	3	01-04	20	0	01-04	31	1
01-14	21	1	01-14	48	4	01-09	61	7	01-09	46	3	01-11	9	0	01-11	31	1
01-21	25	0	01-21	45	1	01-16	37	2	01-16	50	0	01-18	13	0	01-18	30	0
01-28	45	2	01-28	38	0	01-23	60	8	01-23	38	2	01-25	18	0	01-25	50	3
02-04	46	2	02-04	41	0	01-30	60	7	01-30	39	0	02-01	12	0	02-01	22	2
02-11	37	3	02-11	42	2	02-06	46	1	02-06	44	2	02-08	40	0	02-08	25	1
02-18	23	1	02-18	44	0	02-13	70	5	02-13	34	0	02-15	16	0	02-15	40	1
02-25	21	1	02-25	34	1	02-20	32	0	02-20	48	0	02-22	30	0	02-22	12	0
03-04	54	2	03-04	19	0	02-27	60	10	02-27	26	2	03-01	25	0	03-01	25	0
03-11	41	2	03-11	16	0	03-06	44	2	03-06	35	1	03-08	35	0	03-08	26	0
03-18	39	1	03-18	27	0	03-13	55	5	03-13	34	1	03-15	42	0	03-15	14	0
03-25	4	0	03-25	15	1	03-20	22	1	03-20	3	0	03-22	19	0	03-22	16	0
						03-27	1	0	03-27	13	0	03-29	38	0	03-29	11	0

W6OI #109 ON THE AIR

The 10-10 Club Station, W6OI #109, is available to any current (dues paid) 10-10 member or chapter for use as a special event station such as Field Day, Chapter gatherings, and Radio Conventions. Send a written application including dates and purpose of operation and any other information to:

JACK MOORE K5CC #50708
W6OI LICENSE TRUSTEE
371 RIDGE CREEK LN
BULVERDE TX 78163

Enclose a copy of your amateur license. QSL cards are available for special events. W6OI was on the air during the Spring CW contest on May 3-4. W6OI was operated during the Texas Hill Country Picnic on June 1 and at the 10-10 Convention in San Antonio on June 26-28.

Louise Chapman N6ELK #36654 operates W6OI each Wednesday as the 10-10 Net Control Operator beginning at 1800Z on 28.800 MHz. Please include a SASE when requesting a W6OI QSL card via:

LOUISE CHAPMAN N6ELK
310 CLARK AVE.
LONG BEACH CA 90808

Paperchasers working W6OI can request the chapter list from K5CC. For CW operators, W6OI has a FISTS number.

the 10-10 News on CD-ROM

That's right! Every issue of the 10-10 News AND the Quarterly Bulletin that was ever published in magazine format (now through 2002) is now available on a CD-ROM in Adobe pdf format (we have also included a copy of Acrobat for those that don't have Acrobat Reader) now available for the low price of \$20 USD which INCLUDES shipping and handling. You may pay by Check, Money Order or IRC's (\$1 USD per IRC). VISA and MasterCard are also acceptable. Please provide Card Number, Expiration Date, Name on Card, Phone Number and signature of Cardholder (please note that our credit card agent is RSVP of Omaha NE).

Mail to: 10-10 INTERNATIONAL NET, INC.,
 643 N 98TH ST #142,
 OMAHA, NE 68114-2342
 or by FAX to 402-891-2481

all sale profits go to the 10-10 Scholarship Foundation

New Life Members

03577W4GFYThomas A Clarkson
32216K5HUT.....Robert F Wynhoff
72995WF8LBruce E Shanks
73851AD5FXAndrew C John

ANNIVERSARY QSO PARTY RULES

DESCRIPTION

A yearlong event that allows entrants that make legal 10-10 contacts with members that have 10-10's anniversary year contained in their membership number to submit a log of these contacts and earn recognition for their effort.

As example: 2003 is the 41st Anniversary year for 10-10. Contact with members containing a 41 in their membership number (such as 72041 69415 64154 41126 00417) would count toward this contest.

Each year the anniversary number changes, making a whole new group of people the focus of the contest and promoting use of the 10 meter band.

RULES

During the calendar year (Jan 1 through Dec 31) make legal 10-10 contacts (10-10#, Date, Call, Name, QTH) with members containing the anniversary year in their membership number.

Contacts must be made on the 10 meter band with any mode (AM SSB FM PSK CW, etc) but must be made direct and unassisted. As example, no repeater, satellite or internet assisted contacts are permitted. The mode is also to be listed in the log.

Logs must contain only one entry for each 10-10 number. Contacts must be listed in 10-10 number order, with the 10-10#, DATE, CALL, NAME, QTH and MODE listed as shown in this example (log is example only - numbers do NOT match with calls):

10-10#	DATE	CALL	NAME	QTH	MODE
00417	0202	K7XXX	GWEN	OR	SSB
08941	0813	KJ6XX	JAN	CA	PSK
14187	0902	VX2XXX	STEVE	QC	CW
18417	0202	SP8XXX	DON	POLAND	SSB
26410	1204	VK3XXX	MARY	AUSTRALIA	CW
50417	0210	VE7XXX	JOHN	BC	AM

To enter a log you must be a member in good standing (dues paid) on December 31st of the contest year.

Mailed logs MUST be postmarked no later than January 15th of the following year, regardless of what day January 15th falls on.

Logs sent via the internet MUST be sent in ASCII (text) format no later than 2359 utc January 15th of the following year.

Certificates will be issued the same as in regular 10-10 Contests and all entries will be posted in the April edition of the Ten-Ten News and forwarded to the web site manager for inclusion there.

Location of operation will be the same as your mailing address on record as of December 31 of the contest year, regardless of actual location of operations. QRP will only be allowed if ALL contacts were made QRP.

Send logs to:

10-10 Anniversary QSO Party c/o

Steve Rasmussen NØWY

312 N 6th Street

Plattsmouth NE 68048-1302

or via e-mail to <n0wy@alltel.net>

10-10 Scholarship Foundation Supporters

The members listed below became 10-10 Scholarship Foundation Supporters during the months of March, April and May. We encourage all of our members to support the Foundation. The 10-10 Scholarship Foundation is a qualified 501(c)(3) tax exempt organization and therefore your contributions are tax deductible. If your employer will match your contribution, please let us know.

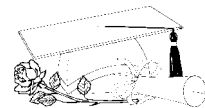
Why not consider a club donation or an individual donation in memory of a fellow ham or loved one? If you haven't donated before, we want you to know that all donations, no matter how small, are appreciated and they do add up.

W0VUB	00593	Francis Hayes
W0PTI.....	13989	Roberta Lhota
W8DOS.....	16200	Francis Bernhardt
KB5FR	17217	Oliver Jolet
W3FQE.....	24552	Lee Benson, Jr.
WB0DML	33043	James Miles
N0TW	36547	Terry Webb
KE7ZQ.....	50876	Jack Dow
KB2IEV	61747	Anthony Kowalsky
N3NOP.....	63098	Robert Fulton, Jr.
KE3LE	64582.....	Gordon Amey, Jr.
W9WES	65388	Wesley Michael
KD5VLN.....	69144	Richard Joyce
AB2O	69475.....	Russell Welkley, Jr.
KA6RCI.....	71825.....	Luther Crocker
K1KTY	71994	Pauline Couture
N1XEA	72605.....	Darryl Couture
AB8ND	73382	Jack Kunnen
KD5LIB	73395	Stephen Neuse

You too can become a 10-10 Scholarship Foundation Supporter, by making your check payable to the 10-10 Scholarship Foundation. Please send to:

10-10 International Net Scholarship Manager
Larry Berger WA2SUH
9 Nancy Boulevard
Merrick, NY 11566-3119

10-10 SCHOLARSHIP APPLICANT INFORMATION



Each year the 10-10 International Net, through our non-profit corporation, the 10-10 Scholarship Foundation, funds five \$1,000 scholarships, which are administered on its behalf by the Foundation for Amateur Radio (FAR).

Hugh A. Turnbull W3ABC, Chairman of FAR's Scholarship Committee, announced the five most recent winners of the 10-10 Scholarships in the October 2002 10-10 International News. Over the past 14 years, 10-10 has funded 46 scholarships valued at \$41,000.

Applicants must be licensed Radio Amateurs having HF privileges. There is no restriction on the course of study, but applicants must intend to seek at least an Associate degree from a college or university. Non-U.S. Amateurs and those seeking graduate degrees are also eligible. Foreign members should be aware that students who study outside the United States are also eligible to receive a 10-10 Scholarship.

It is suggested that every 10-10 member encourage qualified college-bound radio amateurs to take advantage of this opportunity by requesting an application package by letter or QSL card prior to April 30, 2003 from the:

Foundation for Amateur Radio
 P.O. Box 831
 Riverdale, MD 20738

Applicants, except those who are active 10-10 members, must provide an endorsement from a current active 10-10 member (one whose dues are current).

Completed applications must be received by FAR prior to June 1, 2003.

10-10 AWARD INFORMATION

THIS IS A BASIC REVIEW OF AWARDS AVAILABLE FROM 10-10 <> PLEASE REQUEST RULES FOR COMPLETE INFORMATION

To apply for any 10-10 Award, proof of paid-up membership is mandatory. A copy of your membership card or address label from the latest copy of the *10-10 International News* must be sent with your application.

An application listing the rules for each award is available from the appropriate Award Manager listed below. Please send your request with a #10 (business size) envelope, self-addressed and stamped with one unit of first class postage, to the Award Manager for the Award you are interested in obtaining. Please no phone calls to Award Managers for an application or list of rules.

Rules for all Awards are also available on the 10-10 web site located at <http://www.ten-ten.org>

BAR AWARDS

A 10-10 Bar represents a legal contact with one hundred (100) 10-10 members. A Bar award may be applied for and awarded for each group of 100 10-10 members that you work. Additional certificates are available for the Bar levels of 1000, 2500, 5000, 7500, 10,000 and every 2500 contacts above.

INTERNATIONAL 500 OF THE WORLD (VP)

When you attain the 500 Bar from the 100-900 bar manager, you automatically become a member of the International 500 Club and will be assigned an honorary VP number to be used in conjunction with your 10-10 number. With the issuance of the number you are eligible to participate in the VP award program. The VP award recognizes those 10-10 members that work other members with VP numbers. A 10-10 member may apply for VP award endorsements when completing 100 contacts with VP members. A VP award may be applied for and

awarded for each group of 100 that you work. Also available to VP members are the VP Worked All States award and the Lucky 13 Certificate. The Lucky 13 award is intended to demonstrate the operator's ability to work the entire 10-meter band. The 10-meter amateur band extends from 28.0 to 29.7 MHz. The Lucky 13 award is awarded for completing a legal 10-10 contact with 13 different VP's on 13 different days on 13 different 100 kHz (plus or minus 10 kHz) segments of the band. These contacts must occur between 28.3 MHz and 29.7 MHz. There are 15 possible 100 kHz segments possible within this band section. For purposes of the Lucky 13 award, mobile, portable, or fixed operation may be used. Contacts can be made using any legal mode of operation. QSL conformation is not required.

WORKED ALL CONTINENTS AWARD

The 10-10 Worked All Continents award is issued for successfully working a 10-10 member in each of the six (6) radio continents (Africa, Asia, Europe, North America, Oceania, and South America)

COUNTIES AWARD

10-10 offers an award for working all 3077 U.S. Counties. The basic certificate is issued for the first 100 counties contacted. Endorsement seals are available for each 500 level. A plaque is awarded for working all 3077 10-10 Counties.

COUNTRIES AWARD

The Countries award certificate is awarded for confirmed contacts with 10-10 members in other countries. Applications require confirmations in the form of QSL cards (or non-returnable photocopies). A legal 10-10 contact within the applicant's country may be counted as one contact for this award. A basic

10-10 Countries certificate is awarded for contact with 25 countries. Thereafter, endorsement seals may be applied for in groups of 10 through the 75-country level. Beyond the 75-country level, endorsement seals are awarded in groups of five (5)

CW AWARD

The basic certificate for this award is earned with a minimum of 25 legal contracts with other 10-10 members

MOBILE AWARD

The basic Mobile Contact award is issued for 25 mobile contacts. Each contact must consist of the 10-10 number, call sign, name, QTH (state or country) of both parties and the date. Endorsement seals are available for the 50, 75, and 100 contact levels.

OM/XYL AWARD

Within 10-10's membership there are many husband and wife teams. These are referred to as OM/XYL teams. 10-10 offers the OM/XYL award for contact with as many of these teams as an operator can find. The basic OM/XYL Award is for contact with ten (10) teams.

WORKED ALL STATES AWARD

Make a contact with another 10-10 member in each of the 50 United States and you are eligible for the 10-10 WAS award. QSL Confirmation is required.

WPX (PREFIX) AWARD

The basic certificate is awarded for working 100 different prefixes

GREAT BRITAIN COUNTIES & REGIONS CERTIFICATE

A basic certificate is awarded for completion of a legal 10-meter contact with another 10-10 station in five (5) of the numbered Counties/Regions/Unitary Authorities of Great Britain.

AWARD MANAGERS

Bar Applications 100-900

Dan Morris, KZ3T # 41015 112 Royal Oak Ct., Lenoir, NC 28645. (828) 728-5049. kz3t@charter.net

Bar Applications 1000+

Cliff Taylor, K5FBS #48461 22707 Red Mountain Dr., Elmendorf, TX 78112-6034 (210) 621-2741 catk5fbs@aol.com

VP Bar Award Manager

Carl Fisher, W0HIK #40678. 5 Angelina Dr., Augusta, KS 67010-2262 (316) 775-5900 w0hik@aol.com

VP Worked All States Manager

Carl Fisher, W0HIK #40678. 5 Angelina Dr., Augusta, KS 67010-2262 (316) 775-5900 w0hik@aol.com

VP Lucky 13 Certificate Manager

Dan Morris, KZ3T # 41015. 112 Royal Oak Ct., Lenoir, NC 28645. (828) 728-5049. kz3t@charter.net

Continents Award Manager

Dick Corlew, NC6V #25057 3213 Carolyn Circle, Oceanside, CA 92054 (760) 757-9284. nc6v@cox.net

Counties Award Manager

Brad Kimble, K0DBK #55192 3855 66th St. E, Inver Grove Hts, MN 55076-2222 (651) 450-1173. k0dbk@arrl.net

Countries Award Manager

Mike Davidson, N5MT #24949. 3518 Bellefontaine St., Houston, TX 77025-1310. (713) 668-6408. N5MT@aol.com

CW Award Manager

Lee Zalaznik, K16OY #50948 334 Olivina Ave., Livermore, CA 94551-6137. (925) 455-0361. lee.zalaznik@sbcglobal.net

Mobile Award Manager (Temporary)

Ed Redwine, K5ERJ #11843 9 Yellowrose Lane, Augusta, KS 67010-2230 (316) 775-5700 k5erj@aol.com

OM/XYL Award Manager

Pat Hibbs, KH6OE #28842 4603 Glenna Way, Louisville, KY 40219-2814 (502) 968-1894 kh6oe@insightbb.com

Worked All States Award Manager

Eva Donaldson, WBØCON #53964. 12933 W Montana Drive, Lakewood, CO 80228-4244. (303) 989-0475 wb0con@comcast.net

WPX (Prefix) Award Manager

Al Longo, NN1J #41728 PO Box 94, Springfield, ME 04487-0094. (207) 738-3268. nn1j@onperfect.com

Great Britain Counties & Regions Certificate Manager

Mike Crawshaw, G4BLH #18446 50 Kibble Grove, Brierfield, Nelson, Lancs, England BB9 5EW Tel 01144 1282 613754 ... g4blh@zen.co.uk

10-10 AWARDS

TOP TEN HONOR ROLL

Award Manager:
Cliff Taylor
K5FBS #48461

#	CNTCS	CALL	10-10#
01	24600	WA5JDU	03017
02	20900	WB1DBZ	26001
SK	19400	W0RWC	00581
SK	17000	PJ2WG	27999
03	16700	W4WKQ	33299
04	16500	K5MRU	00218
05	14100	WB7NUU	17416
SK	11600	WA9LIC	01599
06	11500	K0PV	09902
	11500	K5GAY	11825
SK	11400	N5CUQ	00040
07	10800	NS4M	41176
08	10600	W9IAI	35140
09	10100	KB0ON	29849
10	10000	W6YRJ	11911

1000+ BAR AWARD

Award Manager:
Cliff Taylor
K5FBS #48461

CERT #	CALL	10-10#
1532	N0WM	02724
1533	DK7LA	66048
1534	K6UGS	12333

500 BAR AWARD

Award Manager:
Dan Morris
KZ3T #41015

VP #	CALL	10-10#
3260	KA9SOX	39886
3261	VK4EJ	30234
3262	W6LV	67981
3263	WB2JRI	64266

LUCKY 13 AWARD

Award Manager:
Dan Morris
KZ3T #41015

CERT #	CALL	10-10#
451	W6ASP	73446

VP AWARD

Award Manager:
Carl Fisher
W0HIK #40678

VP WAS

CERT #	CALL	10-10#
none reported		

VP100

CERT #	CALL	10-10#
528	W6ASP	73446
529	KB1ALX	62468

VP300

CERT #	CALL	10-10#
197	KC8IM	31959
198	K6UGS	12333
199	N6TXT	50198

VP400

CERT #	CALL	10-10#
137	K7CWS	50288
138	N6TXT	50198
139	N0TW	36547

WPX (PREFIX) AWARD

Award Manager:
Al Longo
NN1J #41728

100 PREFIX

CERT #	CALL	10-10#
327	G4TGK	38334
328	WD6CKT	25002

200 PREFIX

CERT #	CALL	10-10#
192	G4TGK	38334
193	N6TXT	50198

300 PREFIX

CERT #	CALL	10-10#
103	N6TXT	50198

400 PREFIX

CERT #	CALL	10-10#
058	KD7RX	38532

COUNTY HUNTER AWARD

Award Manager:
Brad Kimble
K0DBK #55192

100 COUNTIES

CERT #	CALL	10-10#
490	VE4ALN	69217

200 COUNTIES

CERT #	CALL	10-10#
306	VE4ALN	69217

300 COUNTIES

CERT #	CALL	10-10#
203	W0RTV	13962
204	VE4ALN	69217
205	K7BOI	54625

400 COUNTIES

CERT #	CALL	10-10#
149	VE4ALN	69217
150	K7BOI	54625

500 COUNTIES

CERT #	CALL	10-10#
126	W5UFA	23660
127	VE4ALN	69217
128	K7BOI	54625

600 COUNTIES

CERT #	CALL	10-10#
092	N7YBX	62538
093	VE4ALN	69217
094	K7BOI	54625

700 COUNTIES

CERT #	CALL	10-10#
069	K5HWI	63313

900 COUNTIES

CERT #	CALL	10-10#
036	N1API	25468

WORKED ALL STATES AWARD

Award Manager:
Eva Donaldson
WBØCON #53964

CERT #	CALL	10-10#
2454	N5UMH	60027
2455	VK4EJ	30234

DX COUNTRIES AWARD

Award Manager:
Mike Davidson
N5MT #24949

BASIC AWARD 25 COUNTRIES

CERT #	CALL	10-10#
594	DL2IAN	72712
595	ZL3KR	06251

35 COUNTRIES

CERT #	CALL	10-10#
337	9A2GA	71811

45 COUNTRIES

CERT #	CALL	10-10#
239	HB9DOT	36694
240	WA5SWN	72300

110 COUNTRIES

CERT #	CALL	10-10#
031	LU5HE	10334

155 COUNTRIES

CERT #	CALL	10-10#
005	K7XN	41483

160 COUNTRIES

CERT #	CALL	10-10#
004	K7XN	41483

165 COUNTRIES

CERT #	CALL	10-10#
004	K7XN	41483

170 COUNTRIES

CERT #	CALL	10-10#
003	K7XN	41483

175 COUNTRIES

CERT #	CALL	10-10#
003	K7XN	41483

WORKED ALL CONTINENTS AWARD

Award Manager:
Dick Corlew
NC6V #25057

CERT #	CALL	10-10#
593	K9KJM	70422
594	ZL3KR	06251

10-10 AWARDS

CW AWARD

Award Manager:
Lee Zalaznik
KI6OY #50948

BASIC – 25 CW CONTACTS

CW #	CALL	10-10#
	none issued	

50 CW CONTACTS

CW #	CALL	10-10#
077	WD6CKT	25002



OM/XYL AWARD

Award Manager:
Pat Hibbs
KH6OE #28842

BASIC – 10 TEAMS

CERT #	CALL	10-10#
458	AC7HI	69139

MOBILE AWARD

Award Manager:
Ed Redwine
K5ERJ #11843

BASIC MOBILE AWARD

CERT #	CALL	10-10#
137	VK4EJ	30234

50 MOBILES

CERT #	CALL	10-10#
064	VK4EJ	30234

75 MOBILES

CERT #	CALL	10-10#
041	N6TXT	50198
042	VK4EJ	30234

100 MOBILES

CERT #	CALL	10-10#
034	N6TXT	50198
035	VK4EJ	30234

GB COUNTIES & REGIONS CERTIFICATE

Award Manager:
Mike Crawshaw
G4BLH #18446

BASIC CERTIFICATE 5 COUNTIES/REGIONS

CERT #	CALL	10-10#
30	N0TW	36547

ENDORSEMENTS 10 COUNTIES/REGIONS

CERT #	CALL	10-10#
16	AA1KS	56510
30	N0TW	36547

20 COUNTIES/REGIONS

CERT #	CALL	10-10#
20	AA1NC	67174
17	N3TGB	68129
30	N0TW	36547

30 COUNTIES/REGIONS

CERT #	CALL	10-10#
03	K5FBS	48461

Special Notice!!!

Effective Immediately!!!

Attention!!!

HEY!!!

Starting Right Away!!!

NOW!!!

Necessary Action!!!

Hank Richroath K5HWI must step down as Counties Award Manager. We want to **THANK YOU! HANK** for all the hard work you have done. The NEW Award Manager is Brad Kimble K0DBK. Please contact him for you Counties Award needs.

ARE YOU INTERESTED IN ANTENNAS ?

L.B. Cebik has been writing a column about antennas for the 10-10 News for the past few years. 30 issues of this material have been compiled into one book which is available for the low price of \$12.95 USD plus shipping and handling (US Zip Codes \$5 USD - all others \$8 USD). You may pay by Check, Money Order or IRC's (\$1 USD per IRC). VISA and Mastercard are also acceptable. Please provide Card Number, Expiration Date, Name on Card, Phone Number and signature of Cardholder (please note that our credit card agent is RSVP of Omaha, NE). Orders can be made via mail to: **10-10 INTERNATIONAL NET, INC., 643 N 98TH ST #142, OMAHA NE 68114-2342** or by FAX to 402-891-2481. *All profits from the sale of this book go to the 10-10 Scholarship Foundation.*

CATCH US ON THE WEB AT

www.ten-ten.org
www.ten-ten.org
www.ten-ten.org

PINS, PATCHES AND DECALS

1" PINS - \$3.50 each or two for \$6.00
3" PATCHES - \$3.50 each or two for \$6.00
3" DECALS - \$1.50 each
SPECIAL - one of each for \$7.00

All shipments post paid (DX add \$1.00). Please make your check or money order out to 10-10 International Net, Inc. and mail to:
LARRY BERGER, WA2SUH #00407
TEN-TEN SCHOLARSHIP FOUNDATION MANAGER
9 NANCY BLVD
MERRICK NY 11566-3119

sale profits go to the 10-10 Scholarship Foundation





Silent Keys

Compiled and listed by
Ruth Bartholomew NØKDB #48715

It is with sorrow that we note the following 10-10 members who are now Silent Keys. We extend our sincere condolences to the families and friends of these SK members whose calls and 10-10 number will forever be kept in the records of the 10-10 Net.

01094....W6MQK.....John MaverPasadena, CA
01438....W6WSZ.....Lawrence BegoMission Viejo, CA
01900....WA9REQ.....Glen DickinsonCarthage, IL
03018....WA3EZR.....C.Bernard Alcorn.....North East , PA
03527....W0CQE.....Bill BoppertKansas City, MO
03870....WB4MAV.....Arlon Click.....Nicholasville, KY
04017....AA1DO.....Al Alvareztorres.....New Haven, CT
04618....WA2EOB.....Ron Blakeslee.....Pitman, NJ
05245....WK3V.....Rube ChernikoffTemple Hills, MD
05365....W4CYC.....Reginald Cain, Jr.....Phenix City, AL
06116....W2KK.....Richard Lodwig.....Montgomery Village, MD
06714....K8PER.....Arden MarlattNewcomerstown, OH
06721....W1LFZ.....Richard Nutter.....Bangor , ME
10158....W2LZX.....Jack GutzeitDelray Beach, FL
10379....W7DLF.....Carl ReehlPrescott, AZ
11016....W2GRO.....James MontllorScotch Plains , NJ
11443....WB9KOY.....Michael Murphy.....Oak Lawn , IL
11519....WA2GDI.....Otto Boerner.....Corinth, NY
12002....W0OA.....James Fahnestock.....Evergreen, CO
13255....W4XJ.....John DayKnoxville, TN
14010....W0ULK.....Ted RiemannSt. Louis, MO
14031....VE3FJJ.....Harry RabyPicton, ON, Can
14161....KT4QB.....Garret Jensma.....Farmville, VA
15289....WT4T.....M. Bruce EgalkaSaint Petersburg, FL
15700....K4FUF.....Dr. Edward StampsMacon, GA
15802....KD6XY.....Larry BloomSan Bruno, Can
16491....K4JNH.....Merle GissinerMebane, NC
18533....K9FIM.....Marvin Freeman.....Union Mills , IN
18736....K4VHT.....David Dyer Sr.Winston Salem, NC
19718....KD6QA.....Peg AustinModesto , CA
19832....VE4GJ.....Victor James RoweWinnipeg MB, Canada
22368....W9NXM.....Frank Bliesener JrSault Sainte Marie, MI
22482....N3AKO.....William Mullauer.....Baltimore, MD
23127....WB4YQU.....Sam Oran.....Vista , CA
23584....WB7TPB.....Ronald BarlowReno, NV
25068....W7FDL.....Floyd Lehman.....Coeur d'Alene, ID
25423....WA1ZCD.....Clifford Woollam.....Swansea, MA
26139....W4PCO.....Donald Bice.....Saint Petersburg, FL
28686....G4GIZ.....Eddie Waddington.....Lancashire, Eng
28966....W0DQM.....Donald McClenny.....Des Arc, AR

29707....K4LNL.....Charles Josey.....Macon, GA
29813....W0ECD.....Bill BidwellEl Dorado, KS
29851....W0GFU.....Myron Hornbaker.....Meade , KS
32049....W4MOM.....Donald WilfertSaint Petersburg, FL
32217....KD5GP.....Gerald BrophyDel City, OK
32345....W4USW.....Robert Miller.....Charleston, SC
32407....WB9ZNB.....Charles GinnPhoenix , AZ
33052....WD0EDK.....John MinorWichita, KS
33743....WA6HJD.....James ShebleSan Bernardino, CA
35526....KA3IOL.....Harry WrightLebanon, PA
37701....KM4ED.....George SherrillAthens, TN
38577....W7LBK.....Earl Hawley.....Spokane, WA
38656....N1CML.....Charles Ball.....Norwalk, CT
39733....AB4KT.....Jay EvinLake Worth, FL
41998....WB2WYY.....Cornelius KellyHazelton, PA
42525....WD4SMU.....C. Henry WellmanAshland, KY
42934....VE3OIC.....Bill Savage.....Stoney Creek, ON, Can
43242....K4GEC.....Gerald Caudill.....Catlettsburg, KY
43769....KA7ZYQ.....Gregory MasonSpokane, WA
44692....N6JSV.....James Talcott.....Santa Anna, CA
47266....N0KDA.....Art Bartholomew.....Sullivan, MO
47311....K4KYD.....Carl Van Riper.....Ocala, FL
48944....W6BBB.....Percy Dunkle.....Port Ludlow, WA
50914....KA6OTV.....Nello AndreaniLaguna Hills, CA
51167....KA2OEC.....George Shipston.....Worthington, OH
51294....W1WRN.....George Bombria.....Willimantic, CT
52083....KD7WM.....Donald CoonanTucson, AZ
52380....K3NBD.....Robert DeVaughn.....Pittsburgh, PA
54799....WD6EYD.....John LiesmanNational City, CA
55285....K0KQJ.....Lloyd Carmer.....Marshalltown, IA
55585....VE3OKZ.....Sid StadigLindsay, ON, Can
57515....KP4AOD.....Frank MocnikOrlando, FL
58472....KB5EOU.....Perry Funderburg.....Amory, MS
60417....N4UHK.....Leonard KainenHollywood, FL
62092....WB6AXW.....Jack Dobbs.....San Diego, CA
65222....KG0EZ.....Stanford SwintonDenver , CO
65642....KC4VXC.....Owen Ewing.....Boston, KY
68184....KQ6IO.....Ray Stimson.....Orange, CA
69184....N8DEF.....Mark HumphreysGrand Ledge, MI
69185....N8DEH.....Marilyn Humphreys.....Grand Ledge , MI
71237....WA1EAT.....Joseph DaleyQuincy, MA
71813....VK2SW.....Sid Ward.....Wagga Wagga NSW, AUST

Please send silent key information to
Ruth Bartholomew, NØKDB
HC65 - Box 102A, Sullivan MO 63080-9204
or email n0kdb@fidnet.com

Please include Call, 10-10 Number, Name, City and State,
and Date of Death

(if known - if not, please estimate as close as possible)

NOTE: 10-10 obtains SK Listings from various sources and errors could appear as many times they cannot be verified. We apologize for any errors. Please notify the SK Manager if any errors are found.

10-10 NET GUIDE

ZDAY	ZSUM	ZWIN	CHAPTER	QTH	FREQ	ZDAY	ZSUM	ZWIN	CHAPTER	QTH	FREQ
DAILY	0300	0400	Chief Seattle	WA	28625	WED	1700	1800	Channel Islands	CA	28340
M-TH	0300	0400	Chief Seattle	WA	28430	WED	2100	2200	Outlaws on Ten/Bounty Hunters	TX	28644
M-F	1130	1230	Elmer J Fudd Net	PA	28340	WED	2300	2359	Michigan Robins	MI	28493
SUN 1st	1900	2000	Mississippi Lighthouse	MS	28480	WED	2300	2359	Old Dominion	VA	28470
SUN		0010	Twenty-Eight (1st)	VK	28360	THU	0001	0100	Battle Road	MA	28390
SUN		0830	Twenty-Eight (2nd)	VK	28560	THU	0001	0100	Egyptian Radio Club	IL	28420
SUN	0830	0930	Borinage	ON	28785	THU	0001	0100	Cypress	FL	28465
SUN		1400	GB Ten/Laurel Mancunium	G	28860	THU	0100	0200	Cowtown	TX	28710
SUN	1300	1400	Fort McHenry/Yodar Kritch	MD	28840	THU	(1)		Cowtown	TX	28460
SUN	1300	1400	Arlington	VA	29200	THU	0100	0200	Channel Islands	CA	28340
SUN	1330	1430	Possum Trot	NC	28345	THU	0100	0200	Cradle of the Confederacy	AL	28350
SUN	(1)		Possum Trot	NC	28150 CW	THU	0100	0200	Gateway	MO	28650
SUN		1530	Neanderthal Chapter	DL	28355	THU	0100	0200	Milwaukee	WI	28365
SUN		1600	Springbok	TN	28425	THU	0100	0200	MO-KAN Tanners	MO	28440
SUN	1530	1630	Steel City	IL	28420	THU	0230	0330	Windfarms	CA	28485
SUN		1700	Lake Geneva	F	28416	THU	1300	1400	GB Ten/Laurel Mancunium	G	28870
SUN	1600	1700	Sky Blue Waters	MN	28715	THU	2200	2300	Branding Iron I & II	TX	28390
SUN	1600	1700	Twin Cities	MN	28325	THU	2200	2300	Channel Islands	CA	28345
SUN	1630	1730	Possum Trot	NC	28345	FRI	0001	0100	Crazy Eights	PA	28388.8
SUN	1700	1800	Portland 500	OR	28350	FRI	0001	0100	Delaware Valley	NJ	28360
SUN		1830	Crater Lake	OR	28350	FRI	0001	0100	Fort McHenry/Yodar Kritch	MD	28370
SUN	2030	2130	Air Capital	KS	28775	FRI	0001	0100	MAINE-iacs	ME	28402.5
SUN	2100	2200	Possum Trot	NC	28150 CW	FRI	0001	0100	Pine State	ME	28373
SUN	2200	2230	South Texas Lighthouse Brigade	TX	28345	FRI	0200	0300	Appalachian Mountain	KY	28400
S/M	2300	0001	Chesapeake Bay	MD	28435	FRI		1400	New Waterkant	DL	28860
S/M	2330	0030	Michiana	MI	28465	FRI	2130	2230	Down Under	ZL	28530
S/M	2330	0030	Minuteman	MA	28150 CW	SAT	0001	0100	Fort McHenry/Yodar Kritch	MD	28370
MON		0100	Arizona Desert 10-10 Net	AZ	28445	SAT	0001	0100	MAINE-iacs	ME	28402.5
MON		0100	Cradle of Liberty	PA	28695	SAT	1330	1430	Trotters and Pacers	NJ	28755
MON		0130	Cradle of Liberty	PA	28425	SAT	1430	1530	Red River Valley/Steamboat	LA	28585
MON	0100	0200	Milwaukee	WI	28365	SAT	1400	1500	59/62	F	28780
MON	0130	0230	Bauxite	AR	28470	SAT		1500	Borinage	ON	28392.5
MON	0200	0300	Sky Blue Waters	MN	28715	SAT 1st & 3rd	1500		Cast Iron Tower	DL	28133 CW
MON	1400	1500	Major League Baseball	CA	28425	SAT 2nd & 4th	1500		Cast Iron Tower	DL	28333
MON		1700	Berlin Bears	DL	28810	SAT		1500	MO-KAN Tanners	MO	28440
MON		1700	Colorado Quartermaster	CO	28120 PSK	SAT	1430	1530	Red River Valley/Steamboat	LA	28855
MON	2230	2200	Colorado Quartermaster	CO	28360	SAT	1500	1600	Doll Chasers	TX	28433
MON		2300	Oceans of the World	FL	28475	SAT	1500	1600	Oklahoma Route 66 Chapter	OK	28390
MON		2359	Santa Fe Trail	IN	28695	SAT	1500	1600	Republic of Texas	TX	28460
MON	2230	2330	Electric City	FL	28450	SAT	1510	1610	Louisiana Pelican 10-10 Net	LA	28450
MON	2300	2359	Trotters and Pacers	NJ	28755	SAT		1700	Lake Geneva	F	28416
TUE		0030	Sky Blue Waters	MN	28355	SAT	1630	1730	Boomtown	TX	28402
TUE		0030	Twin Cities	MN	28325	SAT	1630	1730	City of Roses	OR	28835
TUE	0100	0200	City of Lights	IL	28280 CW	SAT		1730	Route-66	IL	28370
TUE	0130	0230	City of Lights	IL	28720	SAT		1730	Tango	LU	28650
TUE	0100	0200	Colorado Centennial	CO	28340	SAT		1800	Keystone	CA	28765
TUE	0130	0230	Bauxite	AR	28470	SAT	1700	1800	Lilac City	WA	28390
TUE	0130	0230	Oklahoma Route 66 Chapter	OK	28390	SAT		1830	Crater Lake	OR	28760
TUE		0300	Concho Valley Chapter	TX	28360	SAT		1900	River City/Camellia Capital	CA	28317
TUE	0230	0330	Golden Bear	CA	28485	SAT		2000	Restoration Project/Feline Friends	VE	28747
TUE	0300	0400	Bay Area	CA	28475	SAT		2200	Alii	HI	28730
TUE	1500	1600	New Mexico Mud Ducks	NM	28835	SAT		2330	City of Melbourne	VK	28355
TUE		2300	Peshtigo Fire	WI	28360						
TUE	2200	2300	Trail Drivers	TX	28345						
TUE	2300	2359	Fort McHenry/Yodar Kritch	MD	28370	MON-SAT	1800		10-10 International (during propagation)	28800	
TUE	2300	2359	Great Lakes	AZ	28480	MON-SAT	1800		10-10 International	28380	
T/W	2330	0030	Republic of Texas	TX	28560						
WED		0030	Kansas Trails	MN	28385						
WED		0100	Whitehouse	DC	28475						
WED	0001	0100	Castle Craig	CT	28375						
WED		0100	Steel City	IL	28420						
WED	0030	0130	All American City	AL	28400						
WED	0030	0130	Minuteman	MA	28409						
WED	0100	0200	Space Houston on Ten (SHOT)	TX	28488						
WED	0200	0300	10 Bar X	TX	28440						
WED	0300	0400	Edmonton Area Ten-Tenners (EATT)	VE	28520						
WED	1330	1430	Electric City	FL	28845						
WED		1700	Gold City	GA	28425						
WED		1700	Lake Geneva	F	28185 CW						

(1) After Scheduled Net
(alt) Alternate Frequency

(*) New or change

All changes to the above time and/or frequency should be referred to Chapter Coordinator - K5FBS

The Net times of those chapters not affiliated with 10-10 are given, but their accuracy cannot be assured as those do not report regularly to the Chapter Coordinator. If you desire accuracy of your Net please advise the Chapter Coordinator, K5FBS Cliff Taylor at the address shown on page two of this publication.

CONTEST RULES AND CALENDAR

6.2 QSO Parties

10-10 QSO Parties are contests and awards are given for high scores in Call Areas, countries, etc., 10-10 likes to think of these contests as Parties. These Parties are held for fun and to meet 10-10 members around the world. There are a few basic rules that all participants must follow in order to make the Party fair for everyone and to make the scoring as straightforward as possible for the volunteer scorers. All QSO Party rules are listed below. 10-10 sponsors four (4) QSO Parties and one (1) 24-hour Sprint Party each year. A 10-10 CW QSO Party is held in the Spring and Fall and a 10-10 Phone QSO Party is held in the Winter and Summer each year. The 10-10 Day Sprint is held on October 10th (10/10) each year. All 10-10 QSO Parties are 48 hours long except for the Sprint Party, which is 24 hours in length.

6.2.1 Who Can Participate?

10-10 QSO Parties are open to all amateurs with operating privileges on the 10-meter band. 10-10 members may use any contacts made for 10-10 awards. Non 10-10 members may use contacts to qualify for 10-10 membership or may choose to just give their call to 10-10 members.

6.2.2 Entry Classifications

You may enter each QSO Party in ONE of the following categories: Individual, Club or QRP. The Individual category includes single station operators and can also include OM/XYL or families using one shared station with individual call signs and 10-10 numbers. The QRP category is for stations with output power of 5 watts for CW, 10 watts PEP for SSB or 10 watts for AM/FM. Stations operating in the Club category must be a legitimate 10-10 Club with a registered 10-10 number, a government issued call sign and a membership of at least 5 amateurs. All Club members operating the Club station during a Party must be paid members of 10-10. A list of all operators in this category must accompany the submitted logs. Multi-transmitters (2 or more transmitters operating simultaneously, sharing one call sign) are NOT accepted in any QSO Party.

6.2.3 Score Assignment

Under certain circumstances it may be possible to assign your QSO Party score to your local 10-10 chapter. Only a paid 10-10 member belonging to a particular chapter as a local member may make chapter assignments of scores. Local members are defined as those members that can work the chapter net via ground wave. If in doubt regarding your qualifications to assign your score to a 10-10 Chapter, either do not claim Chapter score assignment or contact the Contest Manager for confirmation. The 10-10 Sprint Day Party does NOT allow Chapter assignment of scores.

6.2.4 Logging Contacts

During a QSO Party or 10-10 Day Sprint, log your contacts with the following information: date/time in UTC, call sign, name, QTH (state or country), 10-10 number, and points claimed. A sample log sheet is included on the 10-10 web site to aid you in setting up a log. All logs must be in UTC. If you log by hand, the above format will work well. If you log by computer, you may need to add columns for the 10-10 number, etc. Both hand logs and computer logs are acceptable for all 10-10 QSO Parties and the 10-10 Day Sprint. QSO Party logs may be submitted for ONLY one (1) category. For example, a single log CAN NOT be submitted in both the QRP and Club categories. In 10-10 Parties individuals compete against individuals, QRP stations against QRP stations, and Clubs against Clubs. QSO Party and 10-10 Day Sprint logs are accepted from paid 10-10 members ONLY.

6.2.5 Call sign/10-10# Dupe Sheet

A Dupe Sheet is required for all QSO Party and 10-10 Day Sprint log submittals based upon the following criteria. A Dupe Sheet is required if more than 50 contacts are made. Either hand generated or computers Dupe Sheets are acceptable. All submitted Dupe information should be in an alphanumeric sequence. Duping may be accomplished by use of the 100 square grid method using either 10-10 Number or call sign information. Example Dupe Sheets are included on the 10-10 web site. Some Contesters keep the Dupe Sheet current as they work each station, others bring it up to date during lull periods, and still others fill it out after the contest is over. Use whichever way suits your method of operation, but a call sign or 10-10 number Dupe Sheet MUST be provided with your QSO Party or 10-10 Sprint Party submittal if over 50 contacts are claimed.

6.2.6 Cover Sheet

QSO Party logs must be submitted using a 10-10 Cover Sheet. 10-10 Cover Sheets are published on page 32 of each issue of the 10-10 International NEWS. A sample Cover Sheet is also included in this Brochure or you can find a Cover Sheet on the 10-10's web site. An approved Cover Sheet You MUST be used one of these approved Cover Sheets when submitting your QSO Party or 10-10 Sprint results. Whatever Cover Sheet is used, make sure it must be filled out completely - name, call sign, 10-10 number, current mailing address, date of contest entered, etc.

6.2.7 Contest Submittal

The contest submittal package for any 10-10 QSO Party (CW or Phone) as well as the 10-10 Day Sprint, must include all of the following four (4) items: 1. Cover Sheet with all blanks filled in 2. Proof of membership such as a copy of your 10-10 dues card or mailing label from your latest copy of the 10-10 NEWS showing that your 10-10 dues are current as of the date of the QSO Party entered 3. Log in UTC format; hand or computer generated is acceptable 4. Call sign dupe sheet completed (if over 50 contacts are claimed) using 10-10 numbers or using call signs. - all contest submittals must have a Call Sign or 10-10 Number Dupe Sheet if over 50 contacts made. No dupe sheet is required if less than 50 contacts.

6.2.8 Certificates

A certificate will be awarded to the top scorer in each country and each US call area for each CW and Phone QSO Party, and for the 10-10 Sprint event. A country is defined as one of those on the current ARRL DXCC countries list. Certificates will also be awarded to the Top 10 finishers in the world and to the first place finishers in the Club, QRP, and chapter categories. In the event of a tie, the tiebreaker will be based on the greatest number of contacts made. All final scores for CW and Phone QSO Parties, and for the 10-10 Sprint event, for both DX and US call areas, will be published in the 10-10 NEWS for each scoring category along with aggregate chapter scores.

6.2.9 Quiet Zone

During 10-10 QSO Parties, 10-10 members are requested to have the courtesy to observe a Quiet Zone between the frequencies of 28.490 and 28.510 MHz for non 10-10 Party uses. Remember that the 10-10 organization promotes courtesy on the 10-meter band. Please leave the above frequencies open for non 10-10 members to use.

6.2.10 QSO Party Rules

The following eleven (11) rules apply to ALL scheduled annual QSO CW and Phone Parties and the 10-10 Day Sprint Party sponsored by the 10-10 International Net.

1. Phone contest contacts **MUST** be made **within the 10-meter phone band on SSB, AM or FM. CW contest contacts MUST be made within the 10-meter band on CW, RTTY or Digital modes such as PSK31.**

2. Repeater or satellite contacts are NOT allowed.

3. All Exchanges **MUST** include call sign, name, state or country and 10-10 #

4. A station may be counted **ONLY** once as a contact.

5. All contacts **MUST** take place during the designated Party hours.

6. All logs **MUST** be kept in UTC time.

7. A call sign or 10-10 number Dupe Sheet **IS REQUIRED** of all participants that submit 51 or more contacts. (See explanation above - Dupe Sheet).

8. **ONLY** a paid member belonging may make chapter assignments of scores to that chapter as a local member (See explanation above). NOTE: Chapter assignment of scores **IS NOT** allowed for the 10-10 Day Sprint.

9. Scoring: Points are earned for contacts with operators that include a valid 10-10 number exchange and for contacts that do not include a 10-10 number exchange.

(a) Two (2) points are awarded per contact **WITH** a 10-10 member.

(b) One (1) point is awarded per contact **WITHOUT** a 10-10 number exchange.

10. Disqualification criteria: Submitting illegible, improper logs or failing to comply with these Rules or their intent **WILL** result in disqualification. Logging errors exceeding 10 percent (%) will result in disqualification.

11. NO logging information will be returned.

6.2.11 Log Postmark Deadline Date

Each 10-10 QSO Party and 10-10 Day Sprint has a log submission Postmark Deadline Date. This date is published in the 10-10 NEWS and on the 10-10's web site. Any logs received with a postmark after the stated Postmark Deadline will be rejected. It is very strongly recommended that all logs be submitted as soon as possible after the close of the Party. It is also suggested that DX stations send their logs via Air Mail to assure timely receipt. Logs are to be mailed to the announced scoring individual(s) and/or chapters. Scorer's names and addresses for each QSO Party and 10-10 Day Sprint are published in the 10-10 NEWS and on the 10-10's web site.

6.2.12 10-10's Worldwide Web Site

Current information about 10-10 and upcoming 10-10 QSO Parties is always available on the 10-10 web site. In addition to the latest QSO Party dates and general information, there is a copy of a Cover Sheet and a sample Dupe Sheet that may be used for submittal of your QSO or 10-10 Day Sprint Party logs. The address is: <http://www.ten-ten.org>.

6.2.13 Additional Information and Clarification

Any additional information or clarifications that you may need regarding the rules or other information about 10-10 QSO Parties or the 10-10 Day Sprint may be requested through 10-10's Contest Manager.

2003 CONTEST DATES

	CONTEST	POSTMARK
Summer Phone.....	Aug 2-3	Aug 18
Sprint	Oct 10	Oct 27
Fall CW	Oct 25-26	Nov 10

send logs for the above contests to:
STEVE RASMUSSEN - NØWY
312 N 6TH STREET
PLATTSMOUTH, NE 68048-1302

CONTEST RESULTS

MOBILE
CONTEST

MARCH 15, 2003

Contacts are described as Unique
Contacts/Unique Counties/Counties
operated mobile from. Points are Unique
Contacts multiplied by Unique Counties
PLUS Counties operated Mobile from.

TOP TEN IN THE WORLD

CALL	1010#	CONTC	PTS
WD5ACG	72698	91/72/05	7007
K7QXG	05956	66/70/05	4950
W5FBK	28836	65/58/01	3835
NA5TR	34655	54/39/11	2700
N0TW	36547	60/38/06	2640
W6YLJ	19636	52/50/00	2600
WA6MBL	72884	56/42/00	2352
KC8RRO	72780	47/35/09	2115
VK4EJ	30234	40/42/00	1848
N5MT	24949	34/38/02	1360

US CALL AREA 1

CALL	1010#	CONTC	PTS
K1IEQ	31363	35/28/09	1295
N1API	25468	18/18/00	324

US CALL AREA 2

CALL	1010#	CONTC	PTS
NS2M	72143	38/29/05	1292
N2MH	73684	36/29/05	1224
WA2SUH	00407	28/25/02	756
K2HVE	73125	16/17/02	304

US CALL AREA 3

CALL	1010#	CONTC	PTS
KC3T	68155	14/14/01	210
K3NJ	67398	11/11/01	134
N3TGB	68129	10/10/01	110
N3FNE	52799	03/07/00	21

US CALL AREA 4

CALL	1010#	CONTC	PTS
K3ESS	68141	39/26/01	1053
WD4GEO	71574	32/20/02	704
K4QHH	26040	12/07/07	168
K4HAV	17605	06/05/01	36

US CALL AREA 5

CALL	1010#	CONTC	PTS
WD5ACG	72698	91/72/05	7007
NA5TR	34655	54/39/11	2700
N5MT	24949	34/38/02	1360
K5FBS	48461	18/28/00	504
K5CC	50708	21/24/00	504
W5EIJ	11732	07/08/00	56
K5HWI	63313	03/07/00	21

US CALL AREA 6

CALL	1010#	CONTC	PTS
W5FBK	28836	65/58/01	3835
WA6MBL	72884	56/42/00	2352
NC6V	25057	26/19/03	572
AD6AA	68773	21/21/01	462
K6ASK	50969	14/21/01	294
KJ6DB	71092	13/15/00	195

US CALL AREA 7

CALL	1010#	CONTC	PTS
K7QXG	05956	66/70/05	4950
W6YLJ	19636	52/50/00	2600
NJ7I	43483	23/37/00	821
N7HDB	39650	29/23/00	667
AC7GP	68357	22/22/02	528
K7WV	70018	11/18/00	198
WZ0K	55278	10/11/02	130
AA7FK	53104	06/08/00	48

US CALL AREA 8

CALL	1010#	CONTC	PTS
N0TW	36547	60/38/06	2640
KC8RRO	72780	47/35/09	2115

US CALL AREA 0

CALL	1010#	CONTC	PTS
N0WY	68684	20/18/02	400

HAWAII

CALL	1010#	CONTC	PTS
KH7B	34749	40/27/01	1120
KH6DRT	33751	15/15/01	240
KH6CQ	59894	11/05/01	66

CANADA

CALL	1010#	CONTC	PTS
VE7AAP	50407	13/11/01	156
VE7ACM	30939	13/11/01	156

AUSTRALIA

CALL	1010#	CONTC	PTS
VK4EJ	30234	40/42/00	1848

PUERTO RICO

CALL	1010#	CONTC	PTS
KP4GSC	70872	22/19/00	418

CLUB ENTRIES

CALL	1010#	CONTC	PTS
W2MLB	73799	38/29/05	1292
W6OI	00109	22/22/02	528
N7LC	68960	22/22/02	528
K7YY	73461	22/22/02	528
W1NRG	29650	18/18/00	324
VE7SSJ	70805	10/06/01	70
VE7WPC	45881	10/06/01	70

SPRING
CW/DIGITAL
CONTEST

MAY 3-4, 2003

Contacts are described as Unique Contacts
with members of 10-10/Unique Contacts
with non-members. Points are 2 points per
member and 1 point per non-member.

TOP TEN

CALL	1010#	CONTC	PTS
ZL3KR	06251	045/011	101
W4SKW	68872	042/014	98
LU1BJW	39329	029/025	83
W4TAT	73747	031/015	77
ZL/W3SE	53431	026/023	75
ON4CN	42094	015/044	74
N4ZCG	56067	024/026	74
AG4QE	73837	013/042	68
KR4OE	62657	025/003	53
N4ERM	34524	021/000	42

US CALL AREA W0

CALL	1010#	CONTC	PTS
N0WM	02724	009/001	19
W0RTV	13962	008/000	16
N0WY	68684	007/000	14

US CALL AREA W3

CALL	1010#	CONTC	PTS
W3EHZ	39561	006/002	14

US CALL AREA W4

CALL	1010#	CONTC	PTS
W4SKW	68872	042/014	98
W4TAT	73747	031/015	77
N4ZCG	56067	024/026	74
AG4QE	73837	013/042	68
KR4OE	62657	025/003	53
N4ERM	34524	021/000	42
KJ4RV	37776	017/001	35
KR4U	26870	016/000	32
KL7NL	62595	014/000	28
KQ4PK	63201	009/004	22
KU4W	20986	011/000	22
N4EWG	29730	010/000	20
KC4JAN	56060	008/000	16
KE4HW	32054	007/000	14
AD4RX	67754	007/000	14

US CALL AREA W5

CALL	1010#	CONTC	PTS
K5TEN	39886	018/004	40
K5CC	50708	012/000	24
KD5HIP	71476	004/003	11
W5EIJ	11732	005/001	11
WX5I	67839	004/002	10

US CALL AREA W6

CALL	1010#	CONTC	PTS
K6ASK	50969	013/005	31
WB6CYP	69757	007/003	17
W6WIL	69919	008/001	17
KI6OY	50948	006/001	13
W6JNU	40127	004/000	8

US CALL AREA W8

CALL	1010#	CONTC	PTS
W8JSM	00934	016/004	36
W8PJY	14574	010/002	22
W8LBQ	08886	001/000	2

ARGENTINA

CALL	1010#	CONTC	PTS
LU1BJW	39329	029/025	83

BELGIUM

CALL	1010#	CONTC	PTS
ON4CN	42094	015/044	74
ON4KVA	70106	002/007	11

BRAZIL

CALL	1010#	CONTC	PTS
PY2DBU	08264	007/000	14

GERMANY

CALL	1010#	CONTC	PTS
DK3KD	58990	004/028	36

HAWAII

CALL	1010#	CONTC	PTS
KH6F	37649	012/001	25

NEW ZEALAND

CALL	1010#	CONTC	PTS
ZL3KR	06251	045/011	101
ZL/W3SE	53431	026/023	75

CLUB

CALL	1010#	CONTC	PTS
LU4AAO	73816	029/001	59

CHAPTER SCORES

CALL	LOGS	POINTS
PossumTrot	12	492
Tango	2	142
Borinage	2	85
C.A.T.T.	3	60
Bauxite	1	40
Neanderthal	1	36
Gateway	2	35
ALII	1	25
Windfarms	1	13
S.H.O.T.	1	10

CHECK LOGS RECEIVED

CALL	1010#	CONTC	PTS
AA4PR	39481	005/001	11

10-10 INTERNATIONAL NEWS

MEMBERSHIP INFORMATION AND SERVICES

WOULD YOU LIKE TO JOIN 10-10?

Here is what you need:

1. You must hold a valid amateur operator license.
2. Your valid amateur operator license **MUST** authorize or qualify you for unsupervised transmitting operations in the ten meter amateur band under your own personal call sign.
3. You must make contact with ten members of 10-10 and submit a log listing all contacts, their 10-10 number, call sign, name, date of contact, and QTH (state/province/country). A new member application and contact log is available in Section 1 on page 31 of this publication.
4. You must remit dues for one or more years full membership. Fee schedule and payment information can be found in Section 2 on page 31 of this publication.

TYPES OF MEMBERSHIPS

Please see fee schedule in Section 2 on Page 31

Primary Membership

Primary membership is available with yearly dues, although there is a special incentive available when you pay for three years at once.

Family Membership

Family membership consists of a primary member and one or more family members who qualify as a 10-10 member (has made the necessary 10 contacts) and who reside at the same location and postal address. Family memberships run concurrently with that of the primary member. Add \$5 for each additional family member for each year. Only the primary member will receive a copy of the 10-10 News.

Life Membership

Life membership is available and may be paid in one lump sum or spread across two or three years. If you wish information on the extended payment plan, please contact the 10-10 Data Manager.

Senior Life Membership

Senior life membership is available to anyone who is currently 65 years of age or older. Extended payment plan is not offered with senior life membership.

Family Life Membership is no longer available

Membership Renewals

Fill out fee schedule and method of payment in Section 2 on Page 31 and forward as indicated to Data Manager or DX Area Manager. Please make sure you include a copy of your address label with form. If you do not have a copy of your address label (renewing after your membership has lapsed), please include a note with your name, current mailing address, call sign and 10-10 number.

DATA MANAGER SERVICES

Call/Name/Address Changes

All changes are to be sent to the 10-10 Data Manager. Please include your address label (or a copy) with necessary corrections.

10-10 Stamps

Self-adhesive 10-10 stamps that can be used on QSL cards, correspondence and envelopes are available for \$5 per 144 stamps.

10-10 Information Brochure

The 10-10 Information Brochure is 8 pages of everything you would want to know about 10-10. Available for \$2 postpaid along with a return address label.

10-10 Roster = Hard Copy - DISCONTINUED

The Roster is no longer available in printed form

XXIQ

XXIQ is a simple roster. It will search for a call if the 10-10 number is known or for a 10-10 number if the call is known. It is updated monthly and is available FREE at the 10-10 Web Site.

XXIP

XXIP is the expanded version of XXIQ, offering 10-10 number, call, name, address, city, state/country, membership status, expiration date, and SK status. XXIP will print a simple address label. XXIP is updated **monthly** and is available on a CD-ROM or by download from the LinGer web site. Order from the Data Manager: CD-ROM for \$10 US Zip Codes or \$13 DX postpaid. For download version e-mail the Data Manager <wa6poz@arrl.net> or go to <www.lingerinc.com> for instructions.

Data Manager, 10-10 International Net, Inc.

PMB142

643 N. 98th Street

Omaha, NE 68114-2342

Awards and Certificate Guide

This item has been discontinued from production.

Scholarship Donations

Donations to the 10-10 Scholarship Foundation are requested from each member on an annual basis to help fund the five \$1000 10-10 scholarships. Your check should be made payable to the 10-10 Scholarship Foundation and sent to:

Larry Berger, WA2SUH #00407

10-10 Scholarship Manager

9 Nancy Blvd.

Merrick, NY 11566-3119

Catch us on the WEB
http://www.ten-ten.org

10-10 INTERNATIONAL NEWS

SECTION 1 - MEMBERSHIP APPLICATION AND CONTACT LOG

NOTE: If this membership application is being used for renewal purposes, please enter your 10-10 number here _____

Please print your Name _____ Call _____

Address _____ Year of Birth _____

City _____ State or Country _____

Postal/Zip Code _____ E-mail Address _____

NOTE: 10-10 NUMBER, CALL, NAME, ADDRESS, MEMBERSHIP STATUS AND E-MAIL ADDRESS IS MADE AVAILABLE TO ALL MEMBERS VIA A MEMBERSHIP ROSTER. ALL OTHER INFORMATION IS KEPT CONFIDENTIAL AND NOT DISCLOSED EXCEPT BY THE ORDER OF A LAWFUL COURT.

I certify that I meet the membership requirements* of 10-10 _____

* as listed on Page 30 of this publication

YOUR SIGNATURE

	10-10 NUMBER	CALL SIGN	OPERATOR'S NAME	DATE OF CONTACT	QTH (State, Province or DX Country)
1					
2					
3					
4					
5					
6					
7					
8					
9					
10					

SECTION 2 - FEE SCHEDULE AND PAYMENT INFORMATION

10-10 FEE SCHEDULE (eff 2/1/03)	US Zip Codes	DX
New Members	<input type="checkbox"/> \$ 15	<input type="checkbox"/> \$ 18
Renewals (yearly)	<input type="checkbox"/> \$ 15	<input type="checkbox"/> \$ 18
Renewals - 3 year incentive	<input type="checkbox"/> \$ 40	<input type="checkbox"/> \$ 49
Family Membership (yearly)	<input type="checkbox"/> \$ 5	<input type="checkbox"/> \$ 5
Life Membership	<input type="checkbox"/> \$ 500	<input type="checkbox"/> \$ 650
Senior Life	<input type="checkbox"/> \$ 150	<input type="checkbox"/> \$ 200
Scholarship Foundation Donation	<input type="checkbox"/> \$ ____	<input type="checkbox"/> \$ ____
Enter Total		

US Postal Codes and LIFE Memberships mail to
Data Manager, Ten-Ten International Net, Inc.
PMB142
643 N. 98th Street
Omaha, NE 68114-2342 USA
for information email: wa6poz@arrl.net

DX Applicants mail to:
Carol Hugentober, WA8YL #29588
DX Area Manager
4441 Andreas Avenue
Cincinnati, OH 45211-2622 USA
for information email: wa8yl@juno.com

METHOD OF PAYMENT

☐ CHECK Make all checks payable to 10-10 International Net, Inc. Please list your call and 10-10# on your check.

Do not send cash. All DX are reminded that money amounts are quoted in US Dollars.

DX Members please pay by International Postal Money Orders (IRC's are acceptable).

☐ MASTERCARD Account Number (Please include all the numbers on your credit card) Please note that our credit card agent is RSVP of Omaha NE

☐ VISA

Good Through: /

Name of Cardholder _____ PHONE (required): _____

SIGNATURE of Cardholder _____ Date: _____

For charges this form may be faxed to 10-10 International Net, Inc. at 402-891-2481

10-10 QSO PARTY COVER SHEET

EVENT BOX

Please Check Event Box

WINTER PHONE.....☐

SPRING CW.....☐

SUMMER PHONE.....☐

FALL CW.....☐

10-10 SPRINT.....☐

SCORING BOX

CONTACT TYPE	NO. OF CONTACTS	MULTIPLY BY	POINTS
WITH 10-10 Number		x 2	
WITHOUT 10-10 Number		x 1	
TOTAL CONTACTS		TOTAL POINTS	

ENTRY BOX

Please Check Entry Type

INDIVIDUAL.....☐

CLUB.....☐

QRP.....☐

Chapter Assignment (if any)

(not valid for 10-10 Day Sprint)

US Call Area (W0-W9) or ARRL DX
Country you operated from:

CHECK LIST

You must have the following items enclosed in your QSO Party envelope to be an acceptable log submittal.

- ☐ **Proof of current Membership** - Either a photocopy of your membership card or copy of the address label from the latest issue of the 10-10 News. Club Entries must also include proof of membership for all operators.
- ☐ **Log in UTC Date/Time**
- ☐ **Dupe Sheet(s)** *if your log contains more than 50 contacts*
- ☐ **Cover Sheet** - Pertinent information in the Event and Entry boxes must be entered, and all blanks in the Scoring Box must be filled.

**For rules, event dates and mailing information see
QSO Party Contest Rules and Calendar on page 27**

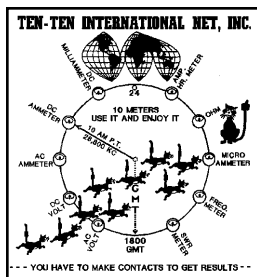
10-10 International Net, Inc.
PMB 142
643 N. 98th Street
Omaha, NE 68114-2342

Address Services Requested

TIME TO RENEW? EXPIRATION DATE
IS ON MAILING LABEL BELOW

FIRST CLASS

PRE-SORTED
FIRST-CLASS MAIL
U.S. POSTAGE
PAID
OMAHA, NE
PERMIT 1799



**JULY 2003
(SUMMER)**