

# 10-10 INTERNATIONAL NEWS

Volume 44 Issue 4

\$1.50

October 2006 (Autumn)

Seth Price  
PO Box 3365  
Socorro, NM 87801

August 5, 2006

**YOUR DONATIONS MAKE A DIFFERENCE !!!**

10-10 International Net, Inc.  
PMB 142  
643 North 98th Street  
Omaha, NE 68114-2342

Dear Ten-Ten Membership:

Thank you very much for awarding me the 10-10 International Net Scholarship! I really appreciate the award and it will go a long ways to defraying the cost of graduate school. I have sent a recent biography and photo for publication in the 10-10 International News.

I am working on a masters degree at New Mexico Tech in Materials Engineering and it is progressing well. I will present some material in October at the Rio Grande Symposium in Albuquerque, NM, and the rest in May at the International Thermal Spray Conference in Beijing, China.

Thank you again for the award and I look forward to talking to you guys on ten meters!

Sincerely,

Seth Price, N3MRA  
#73008

**SUPPORT THE  
TEN-TEN  
SCHOLARSHIP  
FOUNDATION**

**IN THIS EDITION: W6OI SPECIAL EVENT ♦ CONVENTION NEWS  
SCHOLARSHIPS AWARDED ♦ SUMMER PHONE CONTEST RESULTS ♦ MORE!**

## *The 10-10 International News*

is published four times annually by the TEN-TEN INTERNATIONAL NET, INC. Publication dates are approximately mid January, April, July and October.

Each paid-up member will receive a copy. This is an independent publication. Permission to reprint is hereby granted, providing suitable credit is shown.

News items should be sent to the Editor. Technical articles and information on all 10-meter activities or news are welcome and solicited. All copy submitted must be typed, sent on computer disk or via E-mail. Suitable formats will be provided upon request.

Photographs are encouraged. Black and White or Color are acceptable. Include complete information on the back of each photo. Attach a label or other suitable paper to the back of the photo and write all information on the label, not the photo. If sending digital images, high resolution of a minimum 300 dpi must be used. Please do not send newspaper or digitally printed photos as they cannot be used.

Please mail all articles and photos to:

**EDITOR 10-10 News**  
**Steve Rasmussen, NØWY #68684**  
**312 N 6th Street, Plattsmouth, NE 68048-1302**  
**Email: n0wy@alltel.net**



**10-10 CHAPTER ACTIVITY REPORTS** should be sent to the Chapter Coordinator  
**ADDRESS CHANGES:** Members with US Zip Codes should send address changes to the Data Manager. All other members should send changes to the DX Area Manager.

NOTE: 10-10 IS NOT RESPONSIBLE FOR POSTAL SERVICE DIFFICULTIES

**DEADLINE FOR NEXT ISSUE: 1 Dec 2006**

Member  
AMATEUR RADIO NEWS SERVICE



# OFFICERS, DIRECTORS AND NET OFFICIALS

*Award Managers listed on Pg 23 - Membership Information listed on Pgs 30-31*

### **President**

Chuck Imsande, W6YLJ #19636  
20815 Desert Sands Dr., Sun City West, AZ 85375-5443  
(623) 214-8788 .....chuck@w6ylj.com

### **Vice President**

Michael P. Elliott, K7BOI #54625  
1210 East Rivers End Drive, Eagle ID 83616-6383  
(208) 376-3458 .....k7boi@cableone.net

### **Secretary**

Jon Goering, NJ7I #43483  
648 N Thunderbird Drive, Apache Junction, AZ 85220  
(unlisted phone) .....nj7i@mchsi.com

### **Treasurer**

Keith Schlottman, KR7RK #63324  
9581 E. Calle Cascada, Tucson, AZ 85715-5819  
(520) 290-5883 .....kr7rk@prodigy.net

### **Directors**

Larry Berger, WA2SUH #00407  
9 Nancy Blvd., Merrick, NY 11566-3119  
(516) 223-4611 .....wa2suh@aol.com

Rob Ireland, VE9KM #69811  
31 St James Street, Sackville, NB E4L 4L7 Canada  
(506) 536-1038 .....r Ireland@mta.ca

Brad Kimble, KØDBK #55192  
3855 66th St. E., Inver Grove Hgts, MN 55076-2222  
(651) 450-1173 .....k0dbk@comcast.net

Jack Moore, K5CC #50708  
371 Ridge Creek Lane, Bulverde, TX 78163-2871  
(830) 885-2194 .....k5cc@gvtc.com

Steve Rasmussen, NØWY #68684  
312 N. 6th Street, Plattsmouth, NE 68048-1302  
(402) 296-4434 .....n0wy@alltel.net

Doris Slye, N3TGB #68129  
708 Doages Drive, Millersville, MD 21108-2132  
(410) 923-2811 .....n3tgb@aol.com

Cliff Taylor, K5FBS #48461  
22707 Red Mountain Dr., Elmendorf, TX 78112-6034  
(210) 621-2652 .....catk5fbs@aol.com

Joe Williams, WA9TSG #310  
PO Box 511092, Milwaukee, WI 53203  
(414) 263-3618 .....jwilliams34@wi.rr.com

### **Certificate Manager**

Ruth Bartholomew, NØKDB #48715  
10030 Plum Road, Sullivan, MO 63080-6717  
(573) 468-2898 .....n0kdb@fidnet.com

### **Chapter Coordinator**

Cliff Taylor, K5FBS #48461  
22707 Red Mountain Dr., Elmendorf, TX 78112-6034  
(210) 621-2652 .....catk5fbs@aol.com

### **Contest Manager**

Steve Rasmussen, NØWY #68684  
312 N 6th Street, Plattsmouth, NE 68048-1302  
(402) 296-4434 .....n0wy@alltel.net

### **Data Manager / Supplies**

Data Manager, 10-10 International Net., Inc.  
PMB 142, 643 N 98th Street, Omaha, NE 68114-2342  
(402) 895-7367 .....wa6poz@arri.net

### **DX Area Manager**

Carol Hugentober, WA8YL #29588  
4441 Andreas Avenue, Cincinnati, OH 45211-2622 USA  
(513) 661-5323 .....wa8yl@juno.com

### **Editor 10-10 International News**

Steve Rasmussen, NØWY #68684  
312 N 6th Street, Plattsmouth, NE 68048-1302  
(402) 296-4434 .....n0wy@alltel.net

### **General Counsel**

Dave Splitt, KE3VV #69831  
6111 Utah Avenue NW, Washington, DC 20015-2461  
.....davidsplitt@erols.com

### **Net Manager**

Doris Slye, N3TGB #68129  
708 Doages Drive, Millersville, MD 21108-2132  
(410) 923-2811 .....n3tgb@aol.com

### **QSL Bureau Manager**

Bob Peschka K7QXG #05956  
592 SE Cypress Ave., Dallas, OR 97338-2932  
(503) 831-1455 .....k7qyg@dsl-only.net

### **Scholarship Manager**

Larry Berger, WA2SUH #00407  
9 Nancy Blvd., Merrick, NY 11566-3119  
(516) 223-4611 .....wa2suh@aol.com

### **SK Manager**

Ruth Bartholomew, NØKDB #48715  
10030 Plum Road, Sullivan, MO 63080-6717  
(573) 468-2898 .....n0kdb@fidnet.com

### **W6OI Station Trustee**

Jack Moore, K5CC #50708  
371 Ridge Creek Lane, Bulverde, TX 78163  
(830) 885-2194 .....k5cc@arri.net

### **Webmaster**

Darwin Piatt, W9HZC #73090  
10532 Larimore Circle, Omaha, NE 68134  
(402) 991-0412 .....dw-piatt@cox.net

## HOT OFF THE PRESS

Steve Rasmussen NØWY #68684  
Editor 10-10 News



Is it apathy? Is everyone too busy? Is it the internet? No matter what anyone says, people are just too busy to volunteer anymore. I read (I think it was on the ARRL website) that a club that had put on one of their area's best hamfests called it quits because they couldn't get any volunteers to help. It was always the same people working. No matter how many people asked for help, they didn't get any. I would like to think Ten Ten is better than that, but I am not sure. We get a lot of complaints about not having someone to do this or do that and when asked if they would help, it's always "no, I'm too busy." I have heard many complaints, basically saying "why should we have an election? There are only 5 people running for 4 Director jobs, and the President and Secretary only had one selection each." Here's MY question - did you offer to volunteer? I enjoy volunteering and have had to cut back a lot, but still maintain my volunteer jobs in Ten Ten.

We almost found out what it would have been like to lose the Editor, a Director and the Contest Manager one day this last May. The Director would have been easiest to replace, because that is a decision-making job, not a hands-on working job like the Contest Manager and the Editor. Those require computer skills, which I am sure SOME of you have out there.

Hey folks, this organization needs volunteers. All of the people that put in applications for this election are on the ballot. Where was YOUR application?

I am doing much better, thank you, and once I am off the medication I should be perking right up. Funny how that stuff can drag you down.

I had a neighbor that said they wouldn't believe I was ready to go back to work until I actually did a radio contest. 7 days before returning to work I entered the 10-10 Summer SSB contest and took top zero-land and tied for 5th in the world....I am ready.

Hope to see you in Omaha next year!

73 de Steve NØWY

# CONTENTS

AM - FM?	6
An-Ten-Ten-nas	10
Award Listings	24
Award Managers	25
Chapter Coordinator's Column	12
Contest Results - Summer Phone Contest	22
Contest Rules	21
Contest Schedule and Cover Sheet	32
Convention 2007 - Omaha	5
Down Memory Lane	8
DX Holiday in Palau	26
DX News	14
Gateway Chapter Ham of the Cycle	9
Hot Off the Press	3
Life Members	28
Membership Application and Contact Log	31
Membership Information and Services	30
Net Control Stations	3
Net Guide	29
Net News and Quarterly Report	20
Officers, Directors and Net Officials	2
President's Message	4
Scholarship Application Information	16
Scholarship Foundation Supporters	18
Scholarship Winners - 2006	16
Silent Keys	28
W6OI #109 On The Air	19
W6OI Special Event	19

and much more!

## 10-10 NET CONTROL STATIONS

ALL NETS BEGIN AT 1800Z

Monday (28.380)	Dick, K6PZE #01341
Monday (28.800)	Doc, WB6OJB #70675
Tuesday (28.380)	Brian, KC7OC #67668
Tuesday (28.800)	Bob, K4QHH #26040
Wednesday (28.380)	Chris, N7PVL #58018
Wednesday (28.800)	Louise, N6ELK #36654
Thursday (28.380)	Bob, N6OPR #45715
Thursday (28.800)	Robert, KQ4PK #63201
Friday (28.380)	Bill, KB9MJ #22313
Friday (28.800)	Tom, KA9EKG #70731
Saturday (28.380)	Bob, W2BOC #71096
Saturday (28.800)	Earl, KS4XI #70679
Sunday	"NEVER ON SUNDAY"

Alternate Net Controller .....John, NS2M #72143  
Alternate Net Controller .....Dan, KC8IM #31959



*from the office of the*  
**PRESIDENT**  
**10-10**  
**International**

**Chuck Imsande**  
**W6YLJ #19636**

As our President is on an extended medical leave due to a stroke, this column is being written by our Vice President Mike Elliot K7BOI

### SUMMER HAPPENINGS

#### Scholarship Winners

The 10-10 Scholarship Foundation has announced the five recipients of its \$1,000 scholarships for 2006. The outstanding student amateurs selected were:

Pamela L. Toman, KB9SCM - Westmont, IL  
Charles Johnson, N3HX - New Castle, PA  
William Joshua Fisher, W4WJF - Vale, NC  
Trevor D. Convoy, W7TDC - Newburg, OR  
Seth D. Price, N3MRA - Blacksburg, VA

Please check elsewhere in this issue of the NEWS for details on each of our winners. Congratulations to all!

Each year the 10-10 International Net awards scholarships to deserving candidates. The Board of Directors has voted to increase the funding for the scholarship program to six (6) \$1,000 scholarships beginning with the 2007 school year. The selection of the winning candidates is administered, on behalf of 10-10, by the Foundation for Amateur Radio (FAR). Scholarship applicants must be licensed radio amateurs having HF privileges. There is no restriction on the course of study, but applicants must intend to seek at least an Associate degree from a college or university. Non-U.S. amateurs and those seeking graduate degrees are also eligible. Non-U.S. applicants should note that students who study outside the United States are eligible to receive 10-10 scholarships. Applicants, except those who are active 10-10 members, must provide a recommendation from an active 10-10 member.

10-10 International Net members are very proud of the scholarship program and all 10-10 members are encouraged support the Scholarship Foundation. All donations received are acknowledged in the 10-10 NEWS. The 10-10 Scholarship Foundation is a qualified 501(c)(3) tax-exempt organization, making any contributions tax deductible.

Whether you have donated in the past or not, please consider becoming a part of this very worthwhile program. All donations, no matter the size, are gratefully appreciated. 10-10 International Net members is committed to helping our youth reach their full potential. A complete description of the 10-10 International Net Scholarship Foundation and the scholarship award program is available on the Internet at [www.ten-ten.org](http://www.ten-ten.org).

#### Digital Award

Beginning on 1 August 2006, 10-10 began a Digital award program. Contacts must be made using one of the following modes:

FSK Modes (AMTOR, G-TOR, TOR, THROB, RTTY, MFSK16)  
PSK Modes (PSK, CLOVER, PACTOR, PACKET)

Each qualifying contact must include the proper exchange as prescribed in the 10-10 contest rules. Endorsements are available for the basic award, PSK and RTTY and bar awards will be issued at 50, 75, and 100 contacts. After 100 contacts, bar awards will be issued in increments of 100 contacts made. Mel Sojka, KD5DE, #33513, serves as the award manager for this program. Complete details regarding this program are available on the 10-10 web site ([www.ten-ten.org](http://www.ten-ten.org)). What a great new program!

### Upcoming News Items

The results of 10-10's 2006 election will be posted on the web site ([www.ten-ten.org](http://www.ten-ten.org)) by 1 November 2006. Be sure to visit the site and check the election results for President, Secretary and the four (4) Director positions.

Also, soon to be posted on the web site are details of the 2007 10-10 International Net convention to be held in Omaha, NE. The convention chairman is Gerry Gross, WA6POZ, #21274. He and his committee will be posting items about planned convention events, hotel accommodations, and other pertinent information. Be sure to check regularly for updates to assure that you will get the most out of the Omaha convention experience.

### Propagation

Could Solar Cycle 24 be starting? There seems to be quite a bit of debate on that subject right now. It is reported by the solar guru's that the second magnetically reversed sunspot appeared in August. They also say that this one was of longer duration than the first. History tells us that these reversed sunspots indicate the start of a new sunspot cycle.

Let's keep our fingers crossed that we will see improved HF propagation over long distances in September. The autumnal equinox (later in September) is a time when sunlight is equally distributed over the northern and southern hemispheres. We should be able to expect both rising sunspot numbers and solar flux in September. This should also translate to geomagnetic conditions too. These are all good indicators of improvement in propagation.

Does this mean a return to the "good-old-days" on 10-meters. No one knows for sure, but it should mean more band openings, and longer duration band openings. So, don't be left behind - keep that radio on, and on the 10-meter band, and let's make contacts!

### QSL Bureau

With the increase in propagation, what are you going to do about all of those QSL cards? Don't forget, 10-10 offers a 10-meter QSL service to all persons with 10-10 numbers whether dues are current or not. The QSL Bureau service is for all pasteboard QSL's that you send to other 10-10 members. DX stations, including Canada, may also participate.

To use the 10-10 QSL Bureau, you must have SASE's (self-addressed-stamped-envelopes) on file with the QSL Manager. The envelopes must be #10 size (9 1/2 x 4 1/6) with your address and one first class stamp. At first, send the QSL Manager two (2) envelopes. After participating for six months, the Manager may notify you to keep more envelopes on file should demand warrant. A small number of envelopes on file also avert problems that could arise due to postal rate increases. If you do not wish to receive cards through the QSL Bureau, and some members prefer not to do so, please let the QSL Manager know. He will place your call on the non-participating list. QSL cards will be held for two (2) years and if no one claims them they will be discarded. Notices will NOT be sent that you have cards in the QSL Bureau.



## **10-10 Convention - Omaha 2007**

*Gerry Gross WA6POZ #21274*

When Vice-President Mike Elliott called mid-March and asked if it was possible to put together a Convention in Omaha for 2007, I first thought that he was nuts. Being the Data Manager, running for President and now he wants me to put on a convention as well! But learning that other conventions options had not worked out, I decided to at least look into it. In Omaha, May, June and the first part of July are not good for a convention because of other scheduled local events. The end of August is difficult too because of school beginning, and then football starts. Football is BIG in Nebraska! It was decided that sometime at the end of July to mid-August would be the best time for a 10-10 convention in the area. Hotel shopping was the key - finding something at a reasonable rate, available space for the attendees, and at a time when the weather would be acceptable. After checking around the City, we found that the weekend of August 10-12 was the best. A hotel has been found that will offer rooms for \$55 per night (King) or \$60 per night (Double). The hotel also has ample space for forums, a chapter area and banquet facilities. Several restaurants are also within walking distance of the hotel. A number of other restaurants, offering a wide variety of foods, are only a short drive away. The hotel will also provide a shuttle to and from the airport at no cost. What more do we need? The Omaha Visitor's and Convention Bureau is also working with us to determine what places of interest will make the best tours. The 10-10 Board of Directors meeting will be held on the eve of the convention - Thursday, August 9th.

The tentative schedule for the convention is:

Thursday evening Aug 9th

Registration

Friday Aug 10th

Day - Registration, Forums, Chapter Tables, etc.

Tour (still in planning stage)

Evening - Unspecified Activities

(still in planning stage)

Saturday Aug 11th

Registration, Forums, Chapter Table

Tour (still in planning stage)

Evening - Banquet, speaker, prizes

Sunday Aug 12th

Breakfast buffet

The January issue of the 10-10 NEWS will contain more details - registration information and convention web site information.

One last thought about the convention, the weather. In Omaha, the August average high temperature is 85 degrees, with a monthly average of 3 inches of rain. So, that means on any given day the temperature can range from 75 to 95 degrees. It can be sunny, or cloudy, or raining or none of the above. Omaha weather changes significantly from day to day and sometimes significantly within a given hour. Will it be Humid - yes, no and maybe - but probably. One thing is for sure, the Omaha sky is blue, the clouds are white and the air is clean. Also, gasoline may be cheaper somewhere else, but it will also be higher at some other locations. Omaha is a "hub" for several airlines, so airfare should be reasonable. Please consider joining us in Omaha for the 2007 Convention.

## **10-10 Perspective from the Data Manager**

*Gerry Gross WA6POZ #21274*

As the only candidate for 10-10 President in the current election, this is the last time for at least four years that I will write for the 10-10 NEWS under the title of Data Manager. Unless something unforeseen happens I will be President and writing as such. Why were there so few candidates for election this year? Certainly it wasn't the fact that my running for President scared others away. At least, hopefully that wasn't the case. Did the Nominating Committee say thankfully there was at least one candidate for each position and stop looking or asking? No, that wasn't the case either. Did members not step forward and volunteer? More than likely that is exactly what happened! Guess that is really nothing new. Can you think of a local club or other ham organization that doesn't face that problem at some time. We are all too busy, or think we are, and it is easy to just let someone else do it. The trouble with that position is that we are running out of someone's to step up to the task. We may not like it, but when we do find that someone to volunteer, we do stop and go no further. In two years 10-10 will elect a Vice-President and four Directors. Let's not let that election have only a single candidate for these positions. Start thinking about it and get involved now and be ready to step forward to help rather than just sit back and let someone else do it.

Once the election results are official I plan to spell out ALL of 10-10's goals and objectives for the next four years. This will be done in the January NEWS. One major goal is to see the active membership grow significantly. It would be nice if 10-10 could double its active membership in the next four years. Such a goal can be achieved. Remember, a goal should be a far reaching, a stretch for each of us to do our best. How the goal is attained is by setting objectives that are obtainable and measuring the progress. More specifics will be in the January NEWS..

10-10 will again be at Dayton in 2007. We will have both a forum and booth. If you are interested in working in the booth to help meet and greet members and potential members, please let me know. A maximum of four people in the booth at any one time, it becomes crowded with more. Officers and Directors have first choice of times, followed by Net managers and other Net volunteers. Depending on the hours and days worked there are rewards for those willing to participate. Please contact me if you are interested.

Since this is the last NEWS issue before the end of the year, let me end by wishing everyone a Happy Holiday Season. Let us hope that the New Year will bring us closer to peace and happiness in our world and also bring the beginning of cycle 24.

## **AM and FM?**

For those 10-10 members who are relatively new to the hobby, I thought it might be a good idea to briefly discuss the "upper end" of 10 meters. My preferred modes of operation on 10 meters are AM and FM and it's been that way since 1976 when I was first licensed as WB3BIS. During several excellent band openings via E-skip in early June, I worked a number of stations on both AM and FM. Many of these contacts were with newer hams who knew little about the upper end of 10 meters and what to expect when Sunspot Cycle 24 arrives as far as activity and propagation are concerned.

Sunspot Cycle 24 will begin sometime late this year or early next year and some scientists are predicting an active cycle, which will be up to 30% more intense than Cycle 23. If this holds true, that's certainly good news for the 10 meter operator! Although conditions on 10 meters via F-layer propagation on east/west paths won't routinely take place for another 3-4 years, now is a good time to look to the future. Before I do that, however, I'll briefly visit the past to tell the story of how AM and FM operation on 10 meters has evolved over the last 30 years.

AM operation on 10 meters has had more ups and downs than a roller coaster. Once the only phone mode on the amateur bands, AM quickly gave way to SSB operation during the 1950's and 1960's. I'm sure many old timers who are 10-10 members lived through these times and may even have resented those noisy "Donald Duck" signals when they first began appearing on the bands. By the mid-1970's, only a handful of AM operators could be found on the upper end of 10 meters around 29.0 MHz. Many claimed that AM was dead. Or was it?

Many of us in 10-10 are former CB'ers. I'm still active on 27 MHz and have been so since 1968. For those too young to remember, CB radio steadily grew in popularity from its inception in the late 1950's through to the mid-1970's. The years 1974 to 1978 witnessed explosive growth in the use of CB radio, which was primarily fueled by the trucker's strike, the energy crisis and media coverage. CB was further glamorized through constant exposure in both TV and

the movies. The 23 channels allocated for the Class D Citizen's Service was clearly not enough. Overcrowded channels, especially in large metropolitan areas, brought about new regulations and equipment standards and on January 1, 1978, the government made it illegal for 23 channel radios to be sold by radio dealers. Only the new 40 channel models were marketed after this date.

During the last few months of 1977, CB dealers were unloading vast quantities of 23 channel gear at blowout prices to reduce their inventories of radios that would be illegal to sell beginning January 1st. By the mid-summer of 1978, CB-to-10 modification articles began appearing in 73 Magazine and QST Magazine. Since many of these 23 channel rigs could be easily modified for use on 10 meters, several thousand hams nationwide took advantage of the situation and 10 meter AM was reborn!

Due to the conversion process, these modified CB's operated 2 MHz above their corresponding CB channel, hence, Channel 1 (26.965 MHz) became 28.965 MHz and Channel 23 (27.255 MHz) became 29.255 MHz. When I was active on 10 meters in the late 1970's from West Germany as DA2AL while I was in the Air Force, I would spend countless hours working one converted AM CB after another. It was great fun!

By 1979, the AM novelty was beginning to wear off. Why? Well, for starters, most hams were using these converted CB radios "stock", meaning about 4 watts output. Unless conditions were exceptional between two stations on a relatively clear frequency, the use of low-power AM could, at times, be an exercise in futility with noise, static and the associated poor signal-to-noise ratio. AM on 10 meters was dying again.

About the same time the AM novelty was losing steam, an article appeared in the January 1980 issue of 73 Magazine entitled, "CB to 10 FM." This article was once considered the bible for the 10 meter FM enthusiast. Up until this time there always had been a very small contingent of hams running FM around 29.6 MHz. Their equipment was either homebrewed or converted low-band commercial gear such as Motracs

# 10-10 INTERNATIONAL NEWS

A QUARTERLY PUBLICATION OF TEN-TEN INTERNATIONAL NET, INC.

and ProgLines. However, when this 73 Magazine article explained the benefits of FM over AM (particularly the low noise factor) and the ease of converting AM CB rigs to FM, conversion madness hit the 10 meter fraternity once again.

The designated simplex calling frequencies were 29.600 MHz (primary) and 29.500 MHz (secondary) with four (4) repeater pairs 29.62/.52, 29.64/.54, 29.66/.56 and 29.68/.58. The 10 meter FM boom of 1979/1980 was such a big deal that two books were written on the subject by Bob Heil K9EID and Dave Ingram K4TWJ and two 10 meter FM-only transceivers were marketed in the U.S. by Azden (the PCS-2800) and Kona-Com (the Comtronix FM-80). Yaesu jumped onboard by becoming the first major ham gear manufacturer to include FM on a base-unit HF rig (the Yaesu FT-901DM).

Since 1980, the levels of AM and FM activity during Sunspot Cycles 22 and 23 differed greatly. AM activity during the last two cycles has largely moved from the converted CB crowd to the nostalgic boat anchor operator with hi-fi audio. We all know how popular AM is on 160, 80 and 40. With the resurgence of AM operation over the last 20 years, particularly for those that refurbish old boat anchors and "roll their own", there is no doubt that when 10 meters begins to show signs of life via east/west F2 propagation in a few years, there will be plenty of beautiful, clean signals to be heard in the 29.0 - 29.2 MHz window.

FM activity on 10 meters during the last two cycles was fairly consistent with plenty of DX popping up on 29.5 and 29.6 MHz simplex. Although repeaters on 10 meters serve a purpose, many serious FM'ers prefer to work simplex on a quiet frequency. During major band openings, several repeaters can come through all at once on a frequency and this can cause a lot of interference and confusion. Many FM'ers use repeaters strictly as "beacons" to see where propagation is favoring. It is my personal opinion that there are too many repeaters on the 10 meter band.

There were many more stations active on FM than on AM during Cycles 22 and 23 and I don't see any reason for this trend to change during Cycle 24. With all the FM activity on hand, finding a quiet simplex

frequency can be a daunting task during major European/Asian or transcontinental openings. At one time, FM'ers would utilize the frequencies of 29.610, .630, .650 and .670 which were in between the repeater outputs. There are now a few European repeaters with outputs on these very same frequencies. At this point in time using 29.610, .630, .650 and .670 shouldn't cause a problem, but when the F-layer propagation to Europe or Asia returns, use caution.

One particular area to avoid when looking for a clear simplex channel are the OSCAR satellite downlink frequencies from 29.300 to 29.490 MHz. I've heard many a QSO within this range, but it should be avoided. Although very few hams utilize the 29 MHz downlink, the FM'er should respect the gentleman's agreement. I'm quite sure FM'ers wouldn't appreciate an SSB station calling CQ on 29.600 MHz. If the band is very crowded with FM activity and you would like to find an unused simplex channel, the range of frequencies from 29.200 to 29.300 MHz (just above the AM window) are suitable for this purpose. During past cycles, Asian stations, particularly the Japanese, often utilize 29.200 and 29.300 MHz as calling frequencies.

I hope the information I presented is useful to the new ham. Although much of the activity on 10 meters takes place via SSB and CW, there will be plenty of 10-10 members to work on the upper end of 10 meters via AM and FM when the F2 propagation begins in earnest a few years from now. To date, there have been no books published on 10 meter AM operation. Although dated, if anyone is interested in FM operation, I would recommend the following two books:

## 10 METER FM HANDBOOK

Bob Heil K9EID

Melco Publishing (1980)

## 10 METER FM FOR THE RADIO AMATEUR

Dave Ingram K4TWJ

TAB Books (1980)

See you on 10 meter AM and FM!

73, Harry Schools K3HS (ex: WIØFM) #24553



## Down memory lane

Today, while I was looking at past records, old log books, chapter lists, old manila folders from all the different chapters that have existed over the years. It brought back many memories of 10-10 members who are now SK's, along with a lot of Chapters that have passed and fell by the wayside. How many remember Chapters such as the Las Vegas High Rollers, Chattanooga Choo-Choo, Harborites, Citrus belt, Texas Gamblers, Niantic Bay, and many others.

I remembered the reason we became known as "Paper Chasers". We did literally chase paper. Paper certificates, paper awards for seals and all the paperwork we created in trying to be #1 or get the FS (first state) seals. I am still amazed that many of the chapter certificates were beautifully designed and colorful.

I remembered how, at first, I stored all my chapter data on individual 3x5 cards and marked the new data down from the paper lists that came to me by mail. Then I listed each call and their new points on an upgrade sheet and checked it off the card. I submitted the upgrade for the chapter upgrade by snail mail. If the chapter was overseas it might be 3-4 weeks before you got an upgrade back.

It was a full time effort trying operate and then to keep up with QSL cards, paper chasing lists, daily trips to the post office, plus all the chapter paperwork and specials.

Like most paper chasers it took me a few years to upgrade to my first computer - an old Radio Shack TRS80 computer. Then I got brave and moved up to the new Commodore 64, (had to buy 4 to keep one running), which had separate disk drives and you had

backed up to 5 1/4" floppy disks every 5-10 minutes so data wouldn't get lost when computer dumped, which it did regularly! It wasn't if it would crash, it was how soon it would crash. LOL

Then when I got a 286 computer with a 20 meg hard drive, enough room for the operating system, games and data too. From Microsoft DOS 5.0. to DOS 6.0, to WIN 3.1, WIN 95, WIN98, 2000, and finally WIN XP.

Wow! Looking back at it, all of us have taken part in quite a hobby over the years, PC's from the slow 286's, up 386, 486, and onto today's terra-gig PC's. From simple basic programs like Mel's, KD5DE, personalized paperchaser's list, on to programs like KB0ON's DBten programs designed for DOS systems, that are still running almost 17 years later. To the modern programs like Jim's WIN1010 with all the bells and whistles which he is constantly upgrading to reflect the changes and needs of today's Ham operators in the Rapid era of Digital communication

Our hobby has evolved from early years of Ten Ten to the modern paperchaser who is computer savy, operating in digital modes, email, even EQSL's, almost instantly getting new lists which even pop into the proper chapters and spots with no problems. And yet we still grumble if we don't receive other paper chasers list and upgrades fast enough.

Anyway, I just wanted to say, "thanks for all the great memories guys, take time to sit down some day, pick up one of your old log books from the 1980's or 1990's and have some great memories".

Its great being a part of this Fun hobby, AMATEUR RADIO, and being able to make a bunch of great friends.

73's de DAN K7IUQ #55657

## GATHERING NEANDERTHALS



Tom DL2IAN, Henry DL8YBM, Nick PA2NJC, Hans DL1KBQ, Heide DH3KAT, Gerd DJ6DO, Peter DL6DK, Diethelm DJ2YE with daughter of Marion DF4UM, Hans DF9JS, Erwin DJ6SE with "The Neanderthaler", Back: Torsten DL2KG, Werner DL1KDW, Werner DH1PAL, Front: Alfred DK4QO new CM of the "Neanderthal Chapter", Elfi DF3TE with the son of Marion DF4UM (tnx Torsten DL2KG for picture)



## GATEWAY CHAPTER'S HAM OF THE CYCLE

Flag day is a special day. It was proposed by John Adams to commemorate the adoption of The Stars and Stripes by the Continental Congress in 1777. Congress designated June 14 and signed it into law by President Harry S. Truman as national Flag Day 1949.

How fitting it was that The Gateway Chapter Net of Ten-Ten began on the same day in 1972. 34 years and 1776 consecutive nets later, Ye olde Gateway Net is still going strong. What better way to celebrate the event than to dedicate the net on Wednesday 14 June 2006 to our Ham Of The Cycle, long time Gateway Member, Bob Kuete WBØGGO #03735.

Stations checking in, to congratulate Bob were, Scotty W9VHL #09597, Roger KØGOB #69079, John WB9PNU #71937, Bill KAØHZP #31562, Dick WBØJQA #08099, Harry WØJDP #04317, Wm NØWM #02724, Don WØRTV #13962, Ken WØAKI #00360 and Art NØJNC #47260.

Hey, check those low numbers.

Bob is a St.Louis native with eight proud Great-Great-Grandchildren. He was a WWII veteran working as an army radio operator in Italy, maintaining the radios in B-24 bombers.

Bob has collected 5100 Ten-Ten QSOs and many more without numbers. He promotes Ten-Ten and Gateway Chapter every chance he gets. He has helped many new hams get their own number.

Bob has served as Gateway Chapter Head, Secretary/Treasurer and NCS many times. He got his first ham ticket in 1971 and his Ten-Ten number in 1972. Just look at that Tri-band Yagi beam Antenna up 60ft on that crank up tower, and you can see why he is so successful on Ten Meters.

Bob was presented the Gateway Chapter 2006 Silver Mic award in appreciation for his many years of service to Gateway and Ten-Ten.

So please give Bob a call on the Gateway Net any Wednesday evening at 8PM Central time on 28650Kcs.

73/DX de Wm NØWM # 02724 Gateway CH



Wm NØWM #02724 presenting  
Bob WBØGGO #03735 with Silver Mic Award



Bob WBØGGO #03735 and his station



the Antenna - obviously not in a CCR area

# An-Ten-Ten-nas

**INFORMATION**  
to help you decide  
on the best  
antenna for *you!*

**L. B. Cebik**  
**W4RNL #41159**



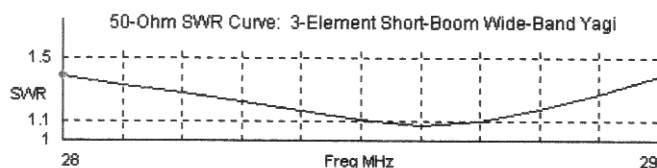
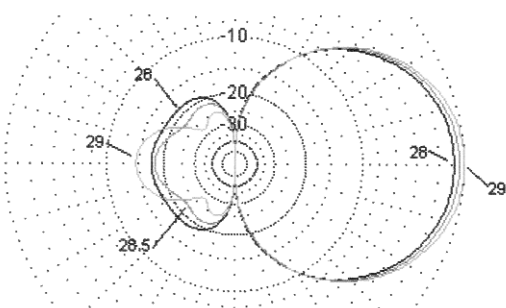
In each issue of the News, we shall try to clarify a significant cluster of ideas used in antenna work. Our object is to help you make the best decisions about the antennas you buy or build without imposing our own prejudices on you. The more you understand, the better your choices will be.

## No. 53: A Short-Boom Wide-Band 3-Element Yagi

In the course of these episodes, we have examined a fairly large number of Yagi designs. They include short beams with only 2 elements up to long beams with 8 elements. Some have used matching networks to raise their low feedpoint impedances to 50  $\Omega$ , while others used a direct 50- $\Omega$  feedpoint connection. A few designs just barely managed to show SWR values of under 2:1 across the first MHz of 10 meters, while other have been wide-band designs. So why should I add another Yagi to the collection?

The simple answer is that the design in this episode is a bit different. A normal wide-band 2-element reflector-driver Yagi is about 5.5' long. A wide-band 3-element Yagi with a direct 50- $\Omega$  feedpoint is close to 11.5' long. There is considerable difference in the performance. The 3-element Yagi provides about 7.1 dBi free-space gain (add about 5.5 dBi when 1  $\lambda$  above ground) and manages about 20-21-dB front-to-back ratio across the band. In contrast, the 2-element beam manages about 6.0-dBi gain across the band with only 10-12 dB front-to-back ratio. Now suppose that we could find a way to achieve about 6.7 dBi gain with about 16-17 dB front-to-back ratio and still keep the beam only 5.5' long. That beam would be worth at least a second look.

Fig. 1 3-Element Short-Boom Wide-Band Yagi  
Free-Space E-Plane (Azimuth) Patterns Across 10 Meters



**Fig. 1** shows 3 overlaid patterns for the beam to cover the low, middle, and top parts of the usual 1 MHz region of 10 meters. The

patterns show very little gain change (about 0.7 dB), and the front-to-back ratio holds up very well until we reach the very top of the band. The antenna uses a direct 50- $\Omega$  feedpoint connection, and the lower part of Fig. 1 shows the SWR curve. Ideally, the SWR does not reach 1.4:1 anywhere within the 1 MHz of 10. In fact, we might redesign the antenna slightly and cover the entire 10-meter band with under 2:1 50- $\Omega$  SWR.

The performance improvement over a standard 2-element wide-band Yagi with the same boom length comes at a price: an extra element and a phase-line. The array that we are exploring has 2 driver elements spaced 25" apart with a single director 39" forward of the first driver. The total length is 64" plus a few inches at the boom ends. A 6' boom would serve very well. Let's take the structure in small steps.

1. The Elements: We can build beams to be light or to withstand heavy winds. To give you a choice, I shall give 2 sets of dimensions. One set uses heavier elements for wind loads up to about 90-100 mph. The lighter version might be rated to the 60-70-mph level. **Fig. 2** shows the way in which we construct the two types of elements using common aluminum tubing with 1/16" walls.

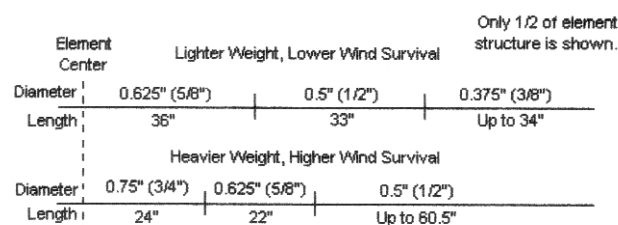


Fig. 2 2 Possible Element Structures for the Short-Boom  
3-Element Yagi with Phased Drivers

The following table of dimensions applies only to these two element-diameter taper schedules. If you change the material diameters or the interior lengths of wider tubing, the beam may not perform as advertised. Remember to add about 2-3 inches to the lengths of the smaller tubes to provide a secure overlap.

### 3-Element Wide-Band Short-Boom Yagi with Phased Drivers: Dimensions

#### Heavy-Duty Version using 0.75"/0.625"/0.6" elements

Element	Total Length	Tip (0.5") Length	Spacing from Rear Element
Rear Drive	205"	60.5"	-----
Forward Driver	193"	54.5"	25"
Director	190"	53"	64"

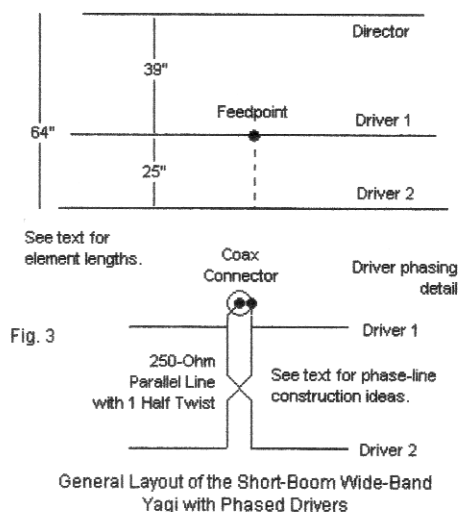
#### Medium-Duty Version using 0.625"/0.5"/0.375" elements

Element	Total Length	Tip (0.5") Length	Spacing from Rear Element
Rear Driver	206"	35"	-----
Forward Driver	194"	28"	25"
Director	191"	26.5"	64"

Both versions provide essentially identical performance across the band. The gain varies from 6.4 dBi at 28 up to 7.1 dBi at 29 MHz. (Yagis with directors show a rising gain with frequency increases, while 2-element Yagis with only a reflector show a decreasing gain with rising frequency.) The front-to-back ratio peaks at almost 18 dB at mid-band. Its lowest value is about 14.5 dB at 29 MHz.

2. The Overall Design: The general layout of the beam appears in **Fig. 3**. The top portion shows the relative position of the elements.

In this design, I have started with a simple narrow-band driver-director array (and all 2-element driver-director Yagis have a very narrow beamwidth). I then changed the driver system to a pair of phased drivers in order to broaden the antenna's operating bandwidth. By the judicious selection of element spacing, element length, and the phase-line characteristic impedance, I ended up with a beam that spread the relatively good driver-director performance across the entire 1st MHz of 10 meters.



The lower part of Fig. 3 shows the general layout of the interconnection of the 2 driver elements. The phase-line consists of a parallel transmission line with a 250-Ω characteristic impedance. The line requires 1 (and only 1) half twist between the 2 drivers in order to provide the correct phasing for broadband service on 10. The coax connector - that is, the feedpoint for the main transmission line - goes on the forward driver. This position is convenient, since the position is fairly close to the mast.

3. Making Your Own Phase-Line: Since you need only 25" of phase-line (plus a bit of extra for connections to the elements), you likely should make your own. The following table lists the center-to-center spacing for 250-Ω lines using some common bare copper wires, listed by AWG size.

## 250-W Transmission Line Dimensions

AWG Wire Size	Wire Diameter	Center-to-Center Spacing
#14	0.0641"	0.262"
#12	0.0808"	0.330"
#10	0.1019"	0.416"
#08	0.1285"	0.525"

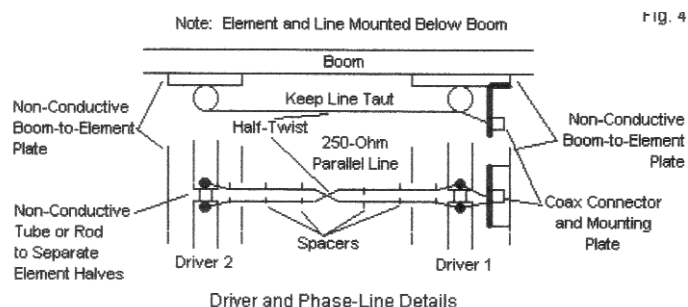
You will need spacers about every 3" to maintain the wire spacing accurately. The best way to make spacers is to drill the wire holes in a long strip of plastic (such as polycarbonate or similar). Then cut the spacers to size after you complete the drilling. Do not make the holes too large; you want a tight fit. If you do not de-burr the holes, the spacer will tend to stay in place through all kinds of weather.

You may already be tempted to substitute 300-Ω TV twinlead for the specified homemade line. I do not recommend the substitution. Even high quality 300-Ω line has a velocity factor of about 0.8. Using a taut line will make the TV phase-line about 25% longer electrically than the value needed to create the right conditions for the

drivers to operate well. Two elements with a phase line use a fairly critical combination of element dimensions and spacing - along with a fairly critical phase-line characteristic impedance and electrical length - to get the job done. The job involves dividing the current at the feedpoint so that each driver element receives the correct current magnitude and phase angle for maximum gain from the pair (in the presence of the director element).

4. General Assembly: There are many ways to construct Yagis. In this design, all of the dimensions apply to elements that are well insulated and isolated from a conductive boom. If you use a 6' section of aluminum tubing as a boom, you will need polycarbonate or similar non-conductive plates for the boom-to-element junctions. I prefer to use stainless steel U-bolts with saddles to grip the boom and the elements without crushing them. Saddled U-bolts with solid or cast saddles are available by mail. I prefer them to the typical muffler-style fixture with a U-shaped saddle that contacts the tubing in 2 lines.

The director will be a continuous element, with no break in the center. So double the length of the largest tubing in Fig. 2 to arrive at the center-section length. Both drivers require a small gap (1/4" is fine) for connections. I tend to prefer fiberglass rod inside the largest tube and extending to the ends of the plate. This system has 2 advantages. First, it places an extra support under the element U-bolts and also aligns the whole element with only 2 element U-bolts near the outer edges of the plate. Second, the rod allows good support for #6 or #8 stainless-steel hardware for making the connections to the phase-line and to the coax connector leads. Fig. 4 shows the general scheme without the U-bolts.



The side view shows the element below the boom for best stability. As well, the boom helps to keep ice and snow off the phase lines. The bottom view shows the phase-line and coax connection points. Keep the phase line taut. The sharp twist in reality will become a gradual twist along the line length. Using 1/4" thick insulation plates and saddle U-bolts will provide enough spacing from the phase-line to minimize interaction with the boom.

The coax connector can sit on a small metallic plate attached to the forward edge of the forward-driver plate. Just be sure that the screws you use to secure the coax connector plate do not contact the boom. Of course, all hardware should be stainless steel, which you can obtain from most home centers these days. For other construction ideas and methods, you can check any number of antenna books, along with past episodes in the series.

The short-boom wide-band 3-element Yagi with phased drivers is one more design in the arsenal of directive beams for the 10-meter operator. If you have followed these columns for the 13 years in which I have been producing them, your design notebooks should have a large collection of potential designs for the new sunspot cycle.



## CHAPTER COORDINATOR'S COLUMN

by Cliff Taylor K5FBS #48461



### General Comments

Chapters which have taken a summer hiatus will have already started back up in September or will be starting back in the month of October.

If you are the chapter head or certificate manager of a chapter and are planning a special for your chapter for any period during the months of January through April 2007, please let me know so that I can either list it here if space permits, or list a contact person if space does not permit. We can also decide upon a seal name if one is needed. (This is primarily for those without email capability.)

With the popularity of the new Digital Award, don't forget that some of the chapters either give on-air points or a seal for PSK31 contacts.

As I have told you in the past, when submitting your quarterly report, you need only include those items that have changed since the last one. I would recommend that, as part of your chapter's records, you have a copy of the last report submitted to aid in sending a new one. You can see later in this article, I maintain a suspense file of quarterly reports submitted and just list those that are due as a reminder. BTW, I do read the reports when I get them, so anything that is happening within your chapter that might be of interest to your chapter members can be listed in the "Comments" section.

The hyperlink section of the 10-10 website is well used by 10-10 members, so, if the hyperlink to your web page has changed, please let either K5CC or me know, so that we can get it changed on the 10-10 website. I also check the URL line on the quarterly report, so please include your hyperlink there if you have one.

If you maintain the records for your chapter and something happens so that you are no longer able to continue to do so, and you want your chapter to continue, please have the records maintained in such a way that they can be passed on. Although it is great to do so, the maintenance of a chapter in a certain area is not a requisite any longer. In other words, if a chapter based in such an area can not be continued in that area, someone outside the area can take it. Recent examples of this happening are the Space Coast and Santa Fe Trail Chapters. Someone made an offer to pick up one of the other chapters that was recently QRTed, but, as the records were not available, this was not possible.

A listing of the current active 10-10 chapters and the seals for those chapters that are either collectible or used in worksheets, etc. is always available on the WIN1010DL web site. I send the updates for this listing to Jim, K4HAV, 10-10 17605, as needed.

I would suggest that when considering a special to be run by your chapter, do your best to make the special so that it can be completed by most of your chapter members. During these times of poor propagation, you might consider a worksheet with no cut off date..

**Quarterly Reports Due** - Dates Listed are Dates of Last Submitted Report: (March 2005) Golden Bear/Grub Stake/Hangtown Crossing/Mother Lode/Reno Folly (August 2005) Bauxite; Colorado Quartermaster; Fort McHenry/Cornerstone/Yodar Kritch; Oceans of

the World/Sun Coast Radio (September 2005) Gold City; (October 2005) Boomtown; Cincinnati Area Ten Tuners; Major League Baseball; North Georgia (November 2005) Alii; Battle Road; Concho Valley; (December 2005) Crazy Eights Edmonton Area 10-10ers/City of Champions Electric City; Palmetto Don't forget that there is now an on-line quarterly report form on the 10-10 website. Drop an email to me for the password.

### Chapter News

**Alii:** If you haven't done a "word find" yet, just drop a snail mail message with an SASE to NH6SJ for a copy. When you finish it and send it in, be sure to ask for another.

**Bay Area:** The chapter no longer has a web site.

**Lilac City:** The Chapter Head is now KJ7BB, Warren Kelsey, South 1405 Crestline, Spokane, WA 99203.

**Neanderthal:** As of 1 September, the new certificate manager is Alfred, DK4QO. His email address is: dk4qo@t-online.de and the postal address is: Alfred Fatum, Schulte-Berge-Str. 16, D-45968, Gladbeck, Germany. On-line upgrades may be made at: [www.qsl.net/neanderthal](http://www.qsl.net/neanderthal). The chapter now gives a 5-point upgrade for checking into the Neanderthal net.

**New Waterkant:** The next net will be on Friday, 06 October 2006, on 28.355 MHz +/- QRM. Check in begins at 1345 UTC, and the net will start at 1400 UTC. This will be the first official net of the period Autumn/Winter/Spring 2006/2007. You'll receive +5 pts for check in. Please add these 5 points to your total on air points when you give out your info. You'll also get them with your next upgrade information. In memory of the Chapter Foundation Day of the former Waterkant Chapter, 16 January 2007, there will be a special activity day. Work stations of the "chapter net team", DK0WKC and/or DK0DSW and/or DF0TEN and/or AD4RX for +5 points each. Stateside wild cards for the event will be N6EMI (representing the West), K5FBS (representing the South) and W2BOC (representing the North). The next official New Waterkant Chapter meeting will be during the period 28 April to 01 May 2007 in North Germany 40 km south of Denmark [if anybody is interested: next airport is Hamburg. Further information about the meeting is available at [http://www.dethlefs-boerm.de/NWK\\_2007.html](http://www.dethlefs-boerm.de/NWK_2007.html). We will have a great program as this is the 5th anniversary of the New Waterkant Chapter.

**Route 66:** This chapter no longer has a web site.

**Santa Fe Trail:** The Chapter Head for this chapter is now W8HL, Harry L. (Lee) Patton, 3704 Elmhurst, Royal Oak, MI 48073. The chapter is running a MULESKINNER special. Work 5 of them and send the information to the Certificate Manager, KA9PCU for the upgrade points.

**Space Coast:** Thanks to the efforts of Lloyd, KK3Q, the chapter now has a web site, [www.spacecoastchapter.com](http://www.spacecoastchapter.com). If you are not a member of the chapter and would like to join, the requirements are stated on the web site and will be very easy to collect. If you are a member and don't have a special to hand out for either worksheet, just drop me an email at [catk5fbs@aol.com](mailto:catk5fbs@aol.com). The chapter has a distinctive certificate which is available for \$2.00 US or \$3.00 DX.

**Sky Blue Waters/Tin Lizzie:** Due to illness, WB0RCC, has passed the reins for these chapters to Jim and Stephanie, KA0ZPP and KA0ZIA. Jim is the Chapter Head and Stephanie is the Certificate Manager. The email address is: [skybluwaters@sbcglobal.net](mailto:skybluwaters@sbcglobal.net) and the postal address is: 14601 55th Street South, Afton, MN 55001. We all appreciate the many years of service that Duane, WB0RCC, gave toward those chapters. These chapters have no web site at the present time.

**Springbok:** There have been some certificate manager changes.

# 10-10 INTERNATIONAL NEWS

A QUARTERLY PUBLICATION OF TEN-TEN INTERNATIONAL NET, INC.

Upgrades from Europe will now go to Mike, W4ZYD, at the postal address of 23808 Denton Valley Road, Abingdon, VA 24211-4224 or the email address of w4zyd@springboknet.com. Upgrades from South Africa, North and South America, and the Caribbean area go to KC4RHW, Jim, or KF4CKB, Phyllis, at kc4rhw@frontiernet.net or 493 Crestview Loop, Crossville, TN 38571-3749. Use of the upgrade sheets on the web site would be much appreciated as they are easier to process and cut down on turn-around time (just fill it out and click the SUBMIT button. We would like to thank ZS6NB, Ken, for all the very hard work that he has put in for the chapter. He had to submit his resignation due to other commitments.

**Steel City:** The new address for the Chapter Head and Certificate Manager is: 55 Pitch Fork Road, Eubank, KY 42567. Check-ins during the months of October and December will be worth +5 points for locals and +10 for out of state. During the month of November, the points awarded for checking in is +2 for locals and +4 for out of state.

**Chapters that Accept Upgrades Via Email** ((As of 6 September 2006))

All of the listed chapters generally need previous, new, and total points and seals claimed. Any transaction with the CM that requires that a certificate be issued, and most worksheet specials, should still be handled via US Mail. Also to be on the safe side, a detailed listing of the upgrade should be kept in the event that the CM should require verification. Requirements peculiar to a particular chapter are noted below.

(\* indicates change)

**Alii** - CM WH6S, wh6s@verizon.net or wh6s@hotmail.com. Use form available from the CM.

**Battle Road** - CM K1IEQ, k1ieq@juno.com

**Bauxite** - CM K5BKT, k5bkt@nwla.com - Bauxite and Arkansas Visitor #'s only

**Bay Area** - CM K6RDK (All except for Bay of Bridges), k6rdk@smm.com CM AC6FU, Jack\_Ruckman@msn.com (Bay of Bridges)

**Boomtown** - CM N5EBA, ed\_cisse\_neal@yahoo.com

**Bounty Hunters & Outlaws on Ten** - CM WD5EDR, wheberling@satx.rr.com

**Borinage** - CH/CM ON4CN, claude@on4cn.org

**Branding Iron** - CM KA5VVD, xit@clearwire.net

**Branding Iron II** - CM N5XJD, n5xjd@earthlink.net

**Castle Craig & Castle Craig Plus** - CM N1API, n1api@cox.net

**Chesapeake Bay** - CM N3TGB, n3tgb2@aol.com

**City of Roses & Portland Bridges** - CM KD7UZ, kd7uz@arrl.net

**Colorado Centennial, Centurion & Golden Aspen** - CM N0CKW, chalice@comcast.net

**Colorado Frontier Gang** - CM WB0CON, wb0con@comcast.net

**Colorado Quarter-Master** - CM KC0CMZ, kc0cmz@msn.com

**Cradle of the Confederacy** - CM K4OZN, k4ozn@charter.net

**Down Under** - CM ZL1KQ, zl1kq@xtra.co.nz

**Electric City** - CM WA2OIZ, istillwell@cfl.rr.com

**Fort McHenry, Cornerstone & Yodar Kritch** - CM K3TUI, k3tui@juno.com

**GB Ten** - CM G4KHF, gbten@globalnet.co.uk

**Gold City** - CM N4WAB, gcn4wab@alltel.net, Use on-line upgrade at website. Until further notice send upgrades to N4BBQ, wpheaton@mac.com

**Houston S.H.O.T.** - CM N5AFV, afmattis@hal-pc.org

**Kansas Trails** - CM KB6UPG, kb6upg@willmar.com. Upgrade

forms are available at: <http://upstel.net/kb6upg/>

**Keystone & Keystone Stars** - CM KA6GPC, ka6gpc@aol.com

**Laurel Mancunium/Emperors/Roman Invasion** - CM G3RRM, g3rrm@aol.com

**Major League Baseball** - CM N6OPR, rlfarrow@catalina-inter.net or n6opr@msn.com

**Millennium VIP** - CM G4PDR, g4pdr@fsmail.net

**Minuteman & Old Ironsides** - CM WA1ENO, wa1eno@hotmail.com

**\*Neanderthal** - CM CM DK4QO, dk4qo@t-online.de

**New Mexico Mud Ducks** - CM KM5EH, buckml@lobo.net

**New Waterkant** - CM DK7LA, tenten@dk7la.de

**North Georgia** - CMchaz@chazcone.com

**Oceans of the World & Sun Coast Radio** - CM K4DRZ,

k4drz@netzero.net (Please hold off on upgrading until further notice)

**Oregon Trailblazer** - CM KD7FZY, ckckd7fzy@webtv.net

**Palmetto** - CM NJ4F, nj4f@arrl.net

**Peshtigo Fire** - CH KE9MA, ke9ma@charter.net - also need number of contacts

**Portland 500** - CM K7PRZ, k7prz@isp.com

**Republic of Texas** - CM WD8JKV, ray.moyer@sbcglobal.net

**Restoration Project & Feline Friends** - CM VE7ACM, sparks3500@uniserve.com

**Route-66** - CM KA9ADD, ka9add@insightbb.com

**\*Sky Blue Waters & Tin Lizzie** - CM KA0ZIA, skybluwaters@sbcglobal.net. Also submit total contacts, basic number(s) with current point value, 10-10 number with date of expiration.

**\*Santa Fe Trail** - CM KA9PCU, ka9pcu2@juno.com.

**South Texas Lighthouse Brigade** - CM N5DAS, n5das@juno.com.

also total contacts, and date of issue of original certificate. An upgrade form is available via email. Upgrades can be done on-line on the website.

**Space Coast** - CM K5FBS, CATK5FBS@aol.com

**\*Springbok** - CM KC4RHW, kc4rhw@frontiernet.net (South Africa, North and South America, and Caribbean); CM W4ZYD, w4zyd@springboknet.com (Europe); CM ZL3KR, zl3kr@ihug.co.nz (Oceania)

**Steamboat Plus** - CM KD5DE, kd5de@nwla.com

**Steel City** - CM KE9WZ, ke9wz@yahoo.com

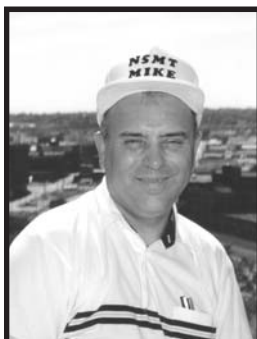
**Trail Driver** - CM N5SCA, n5sca@sbcglobal.net

**Twin Cities** - CM K0DBK, k0dbk@comcast.net

These addresses are as current as the information you provide. If there are any additions, corrections or deletions to this list please contact the Chapter Manager, K5FBS, Cliff Taylor via email at catk5fbs@aol.com or via "snail" mail to 22707 Red Mountain Drive, Elmendorf, TX 78112-6034.

Submission of Information:

This column must be in to the editor of the NEWS no later than the first week of the month of March, June, September, and December. So in order to make the deadline and, if you want your chapter information in the current issue, it needs to be in hand by the last day of February, May, August and November. Keep in mind that sometimes the newsletter is delivered a few days into the month rather than being on the 1st. Therefore, if you have a special or worksheet that is going to be done during the months of January, April, July, or October, then the information needs to be in to the Chapter Manager in the prior issue.



**Mike Davidson**  
**N5MT #24949**

The ARRL DXCC rules have changed and as a result, there are two new DXCC countries! The Republic of Montenegro and Swains Islands have been approved and are now the latest countries. Cards can be submitted to the ARRL and for 10-10 Country Award starting October 1, 2006. There are now 337 current countries on the DXCC list. The basic rules for our 10-10 Countries Award follow all DXCC rules, so whatever the DXCC ruling is, we will follow accordingly.

Several DX groups have traveled to Montenegro where they have given out thousands of contacts mostly on the lower bands where propagation has been better. There have been a few ten meter openings but mostly short skip into Europe, Africa and Asia. I am hoping that the winter conditions here in the USA will allow us to hear this new one on ten. The USA east coast should hear Montenegro probably during weekend contests this winter when more people are on the radio. Good luck with finding a 10-10 member in Montenegro. Presently, no member is living in the Republic of Montenegro.

There has been no new allocation of a callsign prefix for Montenegro. The possible prefixes are: 4N3, 4N6, 4O3, 4O6, YT3, YT6, YU3, YU6, YZ3 and YZ6. The name for the old Yugoslavia has been changed to Serbia for DXCC country purposes. Serbia continues to hold its pre-existing country status since it was already a member of the UN. If you already have credit for Serbia and YU, you retain your credit. To get credit for Montenegro, you have to work one of the prefixes for new country credit, effective June 28th.

The big group of fifty operators, including several 10-10 members, used the callsign 4O3T in August. They were: Carsten **DL6LAU** #58930, Friedhelm **DL7AJA** #69804, Dave **K1ZZ** #4852, and Andy **UA3AB** #23433. If you were able to swap a 10-10 number from one of these people, I would appreciate hearing about it by email. All 4O3T QSL's go to YT6A.

The second new country, Swains Island, is located about 250 miles north of American Samoa. Swains has only a few people living on this 1½ mile long island, populated by tall coconut palm trees and a large shallow lagoon in its center. There is no safe place to land a seaplane. Therefore, a boat is needed to take people to this remote island. As soon as the ARRL announced that Swains was going to have new country status, a group of six operators got organized and proceeded to the South Pacific. Many in the group had been on the island in March 2005, hoping that the DXCC rules would be changed. Nothing changed until June 2006 and now Swains Island is not considered American Samoa since rules were changed June 15th. Look at the ARRL DXCC Website for all the details: [www.arrl.org/awards/DXCC](http://www.arrl.org/awards/DXCC).

The group got to American Samoa by airplane but then had

trouble scheduling a boat to take them from American Samoa to Swains. Trying to schedule the boat to the island was tricky. Bad weather and scheduling the people to fly home from American Samoa, after they were finished on Swains, was a problem. They wanted to be there as many days as possible but the flight out of American Samoa was about once a week. The main organizer actually was only able to stay and operate about twenty-six hours before he had to take a boat back to the main island for his flight out. He had a meeting to attend while the others stayed on Swains for about seven days of operating using callsign KH8SI. They made NO contacts on ten meters as this band was their lowest priority and poorest propagation. I did hear them on twelve meters working the USA but their signal was very weak and mostly in the noise. Their most productive band was twenty meters. NOTE: Do not forget, the 2005 DXpedition does not count for this new country. You must work the August 2006 group for a new one.

Website: [http://www.iijnet.or.jp/JA1BK/home\\_e.html](http://www.iijnet.or.jp/JA1BK/home_e.html).

DX conditions have not improved except for some stateside summer skip that has helped bring back some life to the band during the Summer SSB QSO Party. I worked only a hundred stations during the 10-10 QSO Party last month as we had three or four stateside openings all weekend. The propagation was good when the band opened about sundown each day and early each morning. I finally worked Ralph **AH6RF** #8121 from Hawaii late Sunday and I did not work any stations from S. America.

DO Germany. Starting September 1st all German "DO" callsigns may operate on ten using 100W PEP. They now have more frequencies with low power limits on several bands. Please help us get some of these new operators into membership so we can work a new 10-10 prefix.

**Countries Award:** There is now a total of 618 basic certificates. I issued 3 upgrades and 1 basic award this past quarter to three people. Upgrades cost nothing but an SASE and you can copy your QSL and eQSL cards instead of sending the originals. Copies are not returned to save postage. See the website for more details before you send your application and please email any questions to me.

The count of 10-10 countries worked remains at 313 confirmed and 28 countries without any new 10-10 activity.

The Sunday 10-10 DX Net on 28555 at 1400 UTC is over until the first Sunday of November 2006.

#### **General 10-10 DX reported in the past quarter**

**4O Montenegro.** A small group from the US went to Montenegro on August 13th for a seven-day DXpedition using callsign 4O6DX from YT6A's Sky Contest Club station, which is on top of a 1000 foot mountain. Website: [www.yt6a.com/?page=skycc](http://www.yt6a.com/?page=skycc). The only 10-10 member was Joe **W8GEX** #41393.

**5W Samoa.** Jeff **5W0DP/N8CC** #14612 and several others were on the air in early August with some 10M CW. C9 Mozambique. Frosty **K5LBU** #51322 (C91CF) and Tom **WW5L** #41485 (C91TL), were active from June 29th to July 13th. Frosty told me they made only a few contacts on 10 meters due to poor propagation.



# 10-10 INTERNATIONAL NEWS

A QUARTERLY PUBLICATION OF TEN-TEN INTERNATIONAL NET, INC.

**T6 Afghanistan.** Mika **T66T/OH6MKL** #42006, was active on CW from Afghanistan through July.

**V3 Belize.** Joe **K8JP/V31JP** #22977, has returned to Belize for a few weeks.

**VP5 Turks & Caicos Islands.** Tom **K4ZGB** #26754, was active as VP5/K4ZGB from July 25th to August 1st.

## Upcoming DX & New 10-10 Activity

**3W Vietnam.** Stan **3W9JR/OK1JR** #20103, could be in Hanoi for one or two more years. He was reported on twenty meters CW on August 9th. QSL via OK1JN.

**5A Libya.** A European group has been put together for a November 14-28th DX operation. They will be on all bands/modes using a special call 5A7A. They will be set up near the Mediterranean just outside the capital city of Tripoli. Look for David **K3LP** #13394 and Pirmin **HB9DTE** #73771 and seventeen other nonmembers. Website at: <http://5a7a.gmxhome.de/>.

**7Q Malawi.** Ely **IN3VZE** #31856 will be using the callsign 7Q7CE, from September 18th to October 6th. He will be on mostly SSB from the west shore of Lake Malawi operating all bands. QSL to his home: Ely Camin, Corso 3 Novembre 136/2, 38100 Trento, Italy.

**9H Malta.** Several Dutch operators will activate 9H0VRZ again this year from September 9th to October 3rd. Look for Wim **PG9W/9H3ON** #36133 as the only member.

**CT3 Madeira Islands.** Kresimir **9A7K** #66076, will be on one of the Madeira Islands from August 28th to September 4th. He will be visiting Jose CT3HG and the radio club CS3MAD where Kresimir will sign CT3/9A7K on IOTA AF-014. Website: <http://www.9a7k.com>.

**F France.** A special callsign TM4Q will be used for the CW contest, November 25-26th. Look for 10-10 members Albert **F6FYA** #36970, Marc **F6EMT** #20002, Moudar **F5CWU** #71812, Terry **F5MOO** #70603 and six others. Hopefully you will find one of them before the contest and swap a number. QSL via F6FYA.

**KP4 Puerto Rico.** James **KH2RU** #73897, will be on as KH2RU/KP4 during the SSB Contest, October 28- 29th.

**MD Isle of Man.** Lars **DFILON** #70324 and Georg **DL1ECG** #66010, will be on the Isle of Man September 7-11th. Lars will sign MD0LON and Georg MD0ECG on all the HF bands, CW and SSB. QSL to their home calls.

**OZ Denmark.** Andy **DL4OK** #18412, will operate as OZ/NX1S from Roemoe Island, from September 9-16th.

**P4 Aruba.** Larry **WO0Z** #43471, will operate as P40LL from September 30th through October 6th.

**SU Egypt.** Dave **KJ9I** #28049, will leave for Cairo, Egypt on August 31st and plans to stay until September 18th. Dave will try some HF as time permits. QSL via home call.

**V3 Belize.** Larry **WO0Z** #43471, will be on as V31LL from October 7-21st. Activity will be on CW & SSB.

**VP2M Montserrat.** From January 29th to February 6th, six operators will be on Montserrat. Budd **W3FF** #40140 and Bill **KB9AVO** #45058 are the only 10-10 members. Website: [dpxpedition-vp2m.com](http://dpxpedition-vp2m.com).

**VU7 Lakshadweep.** January 15-25, 2007, you will get a chance to work this very rare most wanted country.

**W USA.** Eric **N8YC** #67623, Lynn **WD8JAW** #71350, KG8AP and K4BRI will operate club station **K8SCH** #46888 from Deer Isle, Maine from September 25-29th.

**XE4 Revillagigedo Island.** In October a group of Mexican and German operators are planning a DXpedition to Socorro Island (Revillagigedo Island) from October 17th to November 3rd. The callsign will be XF4DL and the only 10-10 member is Markus **DL9RCF** #66045. North America, QSL via N6AWD. Europe and the rest of the world, QSL via DL9NDS. Website: <http://xf4dl.xedx.org/>

## Miscellaneous Items & Notes:

You can see the solar progress and graphs at the NOAA website:

<http://www.sec.noaa.gov/SolarCycle/>.

Solar Forecast: <http://www.sel.noaa.gov/forecast.html>.

Information on IRCs/US\$ needed for postage to the USA is at:

<http://www.qsl.net/w9ol/ircchart.txt>.

QSL help: <http://files.billnjudy.com/>.

DX Calendar: An interactive DX Calendar based on 425 DX News is available at <http://www.dxwatch.com/>.

## Propagation

Average daily solar flux for August 2005 through August 2006 was 92.4, 91.9, 76.6, 86.3, 90.8, 83.4, 76.5, 75.5, 88.9, 80.9, 76.5, 75.8 and 79. There are very few DX openings and they are harder to find. Expect the daily solar flux will range from 70-90 and the average monthly flux will stay below 88 until Solar Cycle 24 officially begins. Despite the decline in the sunspot cycle, we will see improved HF propagation over long distances in September. Two backward sunspots were seen on the Sun in August which may indicate the beginning of cycle 24. Both spots were short lived, so lets wait for more spots at the lower latitudes, which will indicate the new cycle.

Cycle 23 is almost eleven years old. The flux remains in its lowest range with many days of zero sunspots and resulting in few DX openings. On September 9th, the solar flux was 86 the A index 2 and K index 0 which is twelve points higher than last time.

**Expect the best conditions on Sept. 9-13th, Oct. 4-9th, Nov. 1-5th, Nov. 28-30th and Dec. 25-29th.** In September USA stations, expect a 7% chance of DX to Asia, Europe or Africa and a 15% chance of talking into South America or Pacific in the afternoon. To tell what DX paths are open, use the beacons from 28.175-28.300 (especially 28.200).

New DX members' June to August 2006: June: 74319 VE3BLH, 74320 DL1HJS, 74472 RA3BZ, 74479 YB1GJS; July: 74321 DB0CUI, 74322 DG5AAP, 74323 DC2SF, 74324 DG7DBN; Aug: 74500 VE3AWW, 74501 DL0GER.

Thanks to the DXNL, The Daily DX by W3UR #25731, QRZ-DX, Lee KH6BZF #8888 & Ohio/Penn DX Bulletins. Send photos/info to Mike Davidson, 3518 Bellefontaine, Houston, TX 77025 USA Email: [N5MT@aol.com](mailto:N5MT@aol.com)

DX IS!

73 Mike Davidson N5MT #24949

# Scholarship Award Winners for 2006

## SETH PRICE N3MRA

Seth Price is a masters student at New Mexico Institute of Mining and Technology (New Mexico Tech) in materials engineering. His thesis will be related to plasma spray-forming functionally gradient pour tubes for reactive metal casting. Ultimately, he would like to teach engineering at the collegiate level, and will pursue a PhD after obtaining his master's degree.

Outside of his interests in materials engineering, Seth spends a large portion of his free time studying meteorology and experimenting in amateur radio.

Each spring, Seth co-leads a crew based from Virginia Tech and Pulaski County High School (Virginia) on a storm chase field study across the Great Plains. Reporting to the National Weather Service (NWS) via Skywarn nets on amateur radio was the first thing Seth brought to the team. Also, APRS was implemented to aid the NWS, as well as the concerned parents of high school and college students.

Seth has earned an extra class license, and takes part in emergency communications, as well as participates in HF contests. Look for him on 10 meters, even at the low part of the solar cycle.

Seth has published several articles on emergency communication in QST and World Radio, has presented a paper at the Southeast Severe Storms Symposium on Skywarn and Amateur Radio in March, and will present another paper at the High Plains Conference in October. Through these papers, he hopes to show the outside world the benefits and fun of amateur radio.



## JOSH FISHER W4WJF

This is Josh Fisher, W4WJF. I am one of the winners of the 10-10 International Net Scholarship. I would like to thank you all



for being part of the organization that created and awards this scholarship each year. I am proud to say that I have won your scholarship and I hope my academic resume in the present and future will make you proud that I was selected to win one of your scholarships. Also, I am glad I got involved in amateur radio. Ham radio has been a very enjoyable hobby that I have met many wonderful people. This scholarship will greatly assist my family and me financially this upcoming school year and allow me to focus on my classes a little

more instead of worrying about how to pay for the current and/or upcoming semesters. Thanks again. I have attached my brief biographical sketch to this email and I hope to have a copy of a photo to you as soon as I can get the file of a digital photo or a recent wallet sized picture. I look forward to learning more about your organization and possibly talking to you both on the air!

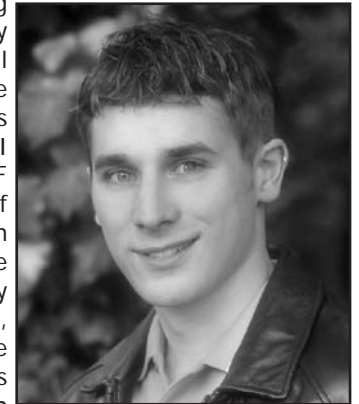
First of all, I would like to take the opportunity to thank the scholarship committee for selecting me as one of the recipients for the 2006 10-10 International scholarships. It was the only outside scholarship I received this year, and therefore, very much appreciated and needed. I will be continuing my studies this year at DeSales University in Center Valley, Pennsylvania. My major is 'Management of Information Technology'. This major is a combination of business management and computer science. I feel that in today's business world, technology plays an extremely vital role. As one who intends to go into the business career field, I intend on educating myself in as many different fields as possible. I therefore intend on either double-majoring, or getting a minor, in marketing.

## TREVOR CONROY W7TDC

My personal life can be divided into three major parts: work, amateur radio, and aviation. My love for aviation started at a young age and led to me getting my pilots license two years ago. My father owns an aviation-related company in Oregon, so it has

had a very strong presence during my life. On my free time I enjoy renting airplanes from local airports and flying throughout the Lehigh Valley. Amateur radio is also a favorite hobby of mine. I participate in all of the major HF contests, usually at the shack of K300/K3000, where I have been living during the summers while not attending college. I enjoy experimenting, home-brewing, and exploring new aspects of the hobby. My last interest, work, has led to a successful endeavor with ICOM America. I originally became involved with ICOM at aviation conventions with my fathers company. They then invited me to participate in their field day activities and eventually the Dayton Hamvention. I've worked at the ICOM booth in Dayton for 4 years, promoting radios and promoting the hobby to youth through the production of promotional videos.

This all led to ICOM approaching me regarding sales of repack amateur equipment. I worked for several months, establishing a business to effectively market and sell reconditioned ICOM equipment. I received the first list of equipment in July and have been selling it ever since. It has become very successful and it is my hope that it grows throughout the next several months and potentially years. For more information about the reconditioned products I sell, you can visit my business website at [www.hamav.com](http://www.hamav.com). Most of the products are also on eBay, [www.hamav.com/ebay](http://www.hamav.com/ebay).



# Scholarship Award Winners for 2006

## PAMELA TOMAN KB9SCM

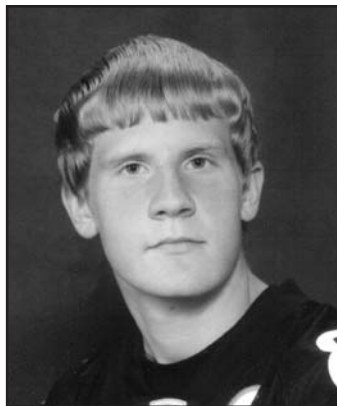
Pamela Toman, KB9SCM, hails from Westmont, Illinois. She is now in her ninth year of operating amateur radio and in her third year of studying linguistics at Georgetown University in Washington, DC. At Georgetown, she tutors inmates in the Arlington County Detention Facility, edits the undergraduate research journal *Mentis Vita*, studies second language acquisition with Dr. Heidi Hamilton, and works as a supervisor in the Student Guard Program, as well as managing several student websites. Pam is incredibly grateful to the amazing generosity of scholarships that makes these experiences at such a university possible.



Pam enjoys foxhunting and contesting, and looks forward to joining the nearby Alexandria Radio Club, W4HFH, with whom she worked Field Day 2006, when she returns to school in the fall. This September she will also begin to host a Worked All Counties/Illinois award with the support of the Fox River Radio League. Although she will only be living on the second floor, Pam looks forward to finally having a real rig this year with which she can play on the HF bands and earn a 10-10 number of her own. She also recently installed Echolink on her computer; she would love to chew the rag with anyone, on any band or mode, who is so inclined!

## CHARLES JOHNSON N3HX

My name is Charles Johnson and I would personally like to thank you for your consideration for the 10-10 scholarship. I plan on attending Robert Morris University in the fall of 2006. The major I have selected is Information Technology. After five years of studying, I plan to obtain a masters degree in this field. I am currently working as a lifeguard through the summer as well as being a Volunteer Fire Fighter for the South New Castle Boro. Recently, I returned from a missions trip in South Carolina, and in a few weeks I will be leaving to attend a week long Habitat for Humanity trip. Once again, I thank you for your generous donation. If you would like any further information, please feel free to contact me. Charles Johnson, N3HXna.Adelphia.net



**YOU CAN HELP THE  
10-10 SCHOLARSHIP FUND!!!**

**\$61,000 GIVEN TO DESERVING HAMS  
FROM 1988-2006**

## 10-10 SCHOLARSHIP APPLICANT INFORMATION

Each year the 10-10 International Net, through our non-profit corporation, the 10-10 Scholarship Foundation, now funds six \$1000 scholarships, which are administered on its behalf by the Foundation for Amateur Radio (FAR).

Diane Zimmerman, AA3OF, Chairman of FAR's Scholarship Committee, announced the five most recent winners of the 10-10 Scholarships in the October 2005 10-10 International News. Over the past 19 years, 10-10 has funded 61 scholarships valued at \$61,000.

Applicants must be licensed radio amateurs having HF privileges. There is no restriction on the course of study, but applicants must intend to seek at least an Associate degree

from a college or university. Non-U.S. amateurs and those seeking graduate degrees are also eligible. Foreign members should be aware that students who study outside the United States are also eligible to receive a 10-10 Scholarship.

It is suggested that every 10-10 member encourage qualified college-bound radio amateurs to take advantage of this opportunity by requesting an application package by letter or QSL card prior to April 30, 2007 from the:

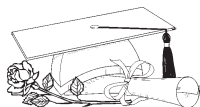
**Foundation for Amateur Radio  
P.O. Box 831  
Riverdale, MD 20738**

Applicants, except those who are active 10-10 members, must provide an endorsement from a current active 10-10 member (one whose dues are current).

Completed applications must be received by FAR prior to June 1, 2007.



# 10-10 SCHOLARSHIP FOUNDATION SUPPORTERS



We encourage all of our members to support the 10-10 Scholarship Foundation. Our goal for the last few years has been to fund five \$1000 scholarships entirely through member donations outside the dues structure. The year 2005 was our best year in recent memory. In June, the 10-10 Scholarship Foundation Board voted to increase the number of \$1000 scholarships to six. The 10-10 Scholarship Foundation is a qualified 501(c)(3) tax exempt organization and contributions are tax deductible. If you have an employer matching program, please let us know. Why not consider a donation as a Chapter or an individual donation in memory of a fellow ham or loved one? If you haven't donated before, we want you to know that all donations, no matter how small, are appreciated and they do add up. At the time you make a donation to organizations like the Red Cross or the United Way, why not write out a check to the 10-10 Scholarship Foundation?

Earlier this year we decided to modify the way we list donors in order to reflect the various levels of financial support. Some of our members have made outstanding contributions and the Board feels that they should be recognized for their special effort. Special thanks goes to David Topp, W5BXX and Gerry Gross, WA6POZ for their continued outstanding support of the Foundation.

The members listed below became 10-10 Scholarship Foundation Supporters during the months of June, July and August.

## PLATINUM

(\$1000 or more)

WA6POZ. . . . . Gerry Gross. . . . . 21274  
W5BXX. . . . . David Topp . . . . . 67596

## GOLD

(\$500 to \$999)

None

## SILVER

(\$100 to \$499)

None

## BRONZE

(Up to \$99)

WA9TSG. . . . . Joseph Williams. . . . . 00389  
WA2SUH. . . . . Larry Berger . . . . . 00407  
WA4EEZ. . . . . Dorothy Johnson . . . . . 15675  
W2IP. . . . . Paul Cornett . . . . . 26513  
WA2EJO. . . . . Robert Berger . . . . . 27605  
W2BLH. . . . . Abraham Berger . . . . . 33333  
WB2UKO. . . . . Joseph Milazzo . . . . . 33392  
K5CC. . . . . Jack Moore . . . . . 50708  
KC6BFQ. . . . . Warner Nash. . . . . 54779  
K2MSB. . . . . Matthew Berger. . . . . 60606  
AD6PV. . . . . Harry Ley . . . . . 62068  
N3NOP. . . . . Robert Fulton, Jr. . . . . 63098  
KM6ZM. . . . . Clifford Johnson . . . . . 64163  
N2VOT. . . . . William Ferguson. . . . . 64287  
KC4IYD. . . . . Nancy Hall . . . . . 68423  
W4TKT. . . . . Raymond Webb. . . . . 70136  
K4SHI. . . . . Roger Johnson . . . . . 70836  
N9XHN. . . . . David McMullen. . . . . 72762  
WB0AEA. . . . . Kurt Bauer . . . . . 73866  
N2GT. . . . . Sterling Rodgers . . . . . 74136  
KD4SIR. . . . . Scott Hibbs. . . . . 74213  
K0SQS. . . . . Harold Schelin, Jr. . . . . 74371  
RA3BZ. . . . . Sergey Panfilov . . . . . 74472  
KG4RUE. . . . . Gary Doyon. . . . . 74484  
W8TOM. . . . . Thomas Williams . . . . . 74496

\*\* Employer match received and included

I am still looking for volunteers to serve on the Scholarship Committee. The goals of the Committee are to oversee the operation of the Scholarship Foundation and the Scholarship Fund, to promote increased participation and to develop the programs necessary for the solicitation of contributions to support the Scholarship Foundation. Please contact me if you would like to help.

You too can become a 10-10 Scholarship Foundation Supporter, by making your check payable to the 10-10 Scholarship Foundation. Pins, patches and decals can also be ordered from me with all proceeds going to the Foundation (see info box). Please send to:

**10-10 International Net  
Scholarship Manager  
Larry Berger WA2SUH  
9 Nancy Boulevard  
Merrick, NY 11566-3119**

## **28.800 Net Control Operators Meet for the first Time**

Louise N6ELK #36654 took a tour of the East Coast this year that was all planned out by her daughter Anita KB6LKC #41577 from Lakewood, CA. On their trip they made stops in Oklahoma, Missouri, New Jersey and Martha Vineyard. One additional stop was to visit Robert KQ4PK #63201 at his home in Eastern North Carolina on August 5th. Robert actually lives in Fort Barnwell (but mailing address is Dover).

During the visit, Robert took them to supper, then on a tour of Fort Barnwell, which was actually a fort during the Indian era, and then visited the restored civil war iron-clad boat "Ram Neuse". Also accompanying them was Louise' granddaughter Marci Ann.



Later that evening Ed N2VEA #65575 came by to meet Louise. The picture above is (left to right) Robert KQ4PK, Louise N6ELK and Ed N2VEA.

---

## **W6OI #109 ON THE AIR**

The 10-10 Club Station, W6OI, is available to any current (dues paid) member or chapter for use as a special event station such as Field Day, Chapter gatherings, and radio conventions. Send a written application and copy of your amateur license to include dates and purpose of operation to:

Jack Moore, K5CC  
W6OI License Trustee  
371 Ridge Creek Ln  
Bulverde TX 78163

QSL cards are available for special events. W6OI was on the air for the Summer Phone Contest on Aug 5-6. Louise Chapman (N6ELK) operates W6OI each Wednesday as the 10-10 Net Control Station beginning at 1800Z on 28.800 MHz. Please include SASE (or use the QSL Bureau) when requesting a QSL card via:

Louise Chapman, N6ELK  
3210 Clark Ave  
Long Beach CA 90808

Paperchasers working W6OI can request the chapter list from K5CC. W6OI has FISTS and GERATOL numbers. Contact K5CC to arrange a schedule to obtain these numbers. Check elsewhere in the 10-10 News for information on the 3rd annual W6OI Special Event to be held on Nov 25-26.

## **W6OI SPECIAL EVENT**

The third annual W6OI Special Event will be on Saturday and Sunday Nov 25-26. The Special Event will start at 0000Z on Nov 25 and run for 24 hours. Ten-Ten members in each call area have been authorized to operate W6OI. The Special Event is open to all amateurs. The purpose of the Special Event is to have fun, keep ten meters active and advertise 10-10. The goal is to work W6OI in all ten call areas. Operators that accomplish this will receive a free nice Certificate. Special Event QSL cards are available for working stations in each call area. If you work each call area send a log to K5CC. Requests for QSL cards (with an SASE) also go to K5CC.

Poor band conditions limited the number of contacts in 2005 however in 2004 the Special Event was a rousing success. Twenty-four stations worked all call areas and over 3600 contacts were logged by the Special Event stations. Please try to operate during this weekend and help celebrate 45 years of 10-10 activity.

## REMEMBER THE 10-10 DAILY NETS

**1800 Zulu**  
**28.380 and 28.800**

**EVERY DAY EXCEPT SUNDAY**

### Net Manager **NET NEWS**

**DORIS SLYE**  
**N3TGB #68129**



This is my final column, and it's a good thing, because I have run out of things to talk about! I want to thank all the Net Controllers for their cooperation and help as I learned the job. I am sure that Steve will put the rest of this space to good use.  
73, de N3TGB, Doris in Maryland

## AIR CAPITAL Shuts Down

The Air Capital Tentenners Chapter of the Wichita, KS area is QRT as of Sep 9, 2006. A number of reasons are cited for ending the Chapter but I will not bore you with them.

It's sad to see our roster with all the names now marked SK. We remember good times, on the air, and off with many, many good friends made over the years. We especially cherish our members who stopped by Wichita to visit and pick up a Navigator number.

The many loyal members that visited our convention tables over the years, and the folks that helped in some fun specials will not be easily forgotten.

A special Thanks goes to Carl Fisher (W0HIK) who has processed hundreds of applications for the Chapter over the years. Carl will remain a staunch guardian on Ten, looking for contacts and waiting for when the band once again, does it's magic. Hopefully, the next cycle will rival the one we had in 1958!

Carl (W0HIK) and I would like to say Thank You, to all our friends and members and to Ten Ten in general for providing such a great radio environment. We will see you again on 10 meters, except this time, we will not be looking for your Air Capital number.

73 and God Bless  
Ed Redwine K5ERJ 11843  
Chapter Head

# QUARTERLY NET REPORT

28.380			28.800			28.380			28.800			28.380			28.800		
MONDAY NETS						WEDNESDAY NETS						FRIDAY NETS					
DATE	TOTAL	w/o 10x#	DATE	TOTAL	w/o 10x#	DATE	TOTAL	w/o 10x#	DATE	TOTAL	w/o 10x#	DATE	TOTAL	w/o 10x#	DATE	TOTAL	w/o 10x#
04-03	1	0	04-03	10	0	04-05	1	0	04-05	12	0	04-07	1	0	04-07	10	1
04-10	1	0	07-10	13	0	04-12	3	0	04-12	11	0	04-14	1	0	04-14	6	0
04-17	1	0	07-17	13	0	04-19	4	1	04-19	14	0	04-21	2	0	04-21	5	0
04-24	1	0	04-24	09	0	04-26	0	0	04-26	15	0	04-28	4	1	04-28	12	1
05-01	1	0	05-01	14	5	05-03	2	0	05-03	13	0	05-05	1	0	05-05	17	1
05-08	1	0	05-08	16	0	05-10	2	0	05-10	11	0	05-12	22	2	05-12	17	0
05-15	1	0	05-15	11	0	05-17	1	0	05-17	13	0	05-19	10	1	05-19	12	0
05-22	1	0	05-22	21	0	05-24	1	0	05-24	16	0	05-26	51	7	05-26	20	1
05-29	4	1	05-29	29	0	05-31	15	1	05-31	13	0	06-02	27	4	06-02	20	0
06-05	1	0	06-05	16	1	06-07	2	0	06-07	13	0	06-09	28	1	06-09	17	1
06-12	1	0	06-12	10	0	06-14	5	0	06-14	10	0	06-16	14	1	06-16	19	1
06-19	1	0	06-19	14	0	06-21	2	0	06-21	9	0	06-23	4	1	06-23	35	3
06-26	1	0	06-26	12	0	06-28	4	0	06-28	8	0	06-30	24	1	06-30	20	1
TUESDAY NETS						THURSDAY NETS						SATURDAY NETS					
04-04	2	0	04-04	2	0	04-06	11	0	04-06	4	0	04-01	1	0	04-01	9	0
04-11	2	0	04-11	2	0	04-13	12	0	04-13	3	0	04-08	3	0	04-08	9	0
04-18	2	0	04-18	1	0	04-20	11	2	04-20	7	0	04-15	3	0	04-15	11	0
04-25	2	0	04-25	5	0	04-27	10	0	04-27	2	0	04-22	1	0	04-22	8	0
05-02	2	0	05-02	1	0	05-04	11	1	05-04	12	1	04-29	3	0	04-29	12	0
05-09	2	0	05-09	1	0	05-11	9	0	05-11	3	0	05-06	3	0	05-06	12	0
05-16	2	0	05-16	3	0	05-18	15	1	05-18	5	0	05-13	1	0	05-13	14	0
05-23	2	0	05-23	11	1	05-25	16	1	05-25	7	0	05-20	2	0	05-20	10	1
05-30	21	1	05-30	9	1	06-01	11	0	06-01	17	0	05-27	36	4	05-27	16	1
06-06	3	0	06-06	2	0	06-08	12	0	06-08	16	1	06-03	0	0	06-03	7	0
06-13	5	0	06-13	9	0	06-15	20	0	06-15	30	1	06-10	45	6	06-10	13	0
06-20	10	1	06-20	10	1	06-22	12	1	06-22	3	0	06-17	9	2	06-17	13	0
06-27	5	1	06-27	1	0	06-29	46	1	06-29	33	2	06-24	44	26	06-24	13	0



# TEN TEN CONTEST RULES

## 6.2 10-10 QSO PARTIES

10-10 QSO Parties are contests that are held for fun and to meet old, new and prospective members around the world. The rules listed here are for all general QSO parties. The Anniversary and Mobile QSO Parties are specialty contests and do have additional rules.

### 6.2.1 WHO IS ELIGIBLE?

Contests are open to all amateurs with operating privileges on the 10 meter band, however logs will be accepted only from active members as of the date of the contest. Other logs received will be handled as checklogs. Checklogs are used to validate (check) other logs but do not receive awards.

### 6.2.2 WHEN ARE THE QSO PARTIES?

There are currently five QSO Parties held through the calendar year:

Winter Phone Contest - held on the first full weekend in February  
0001 UTC Saturday through 2359 UTC Sunday.

Spring CW Contest - held on the first full weekend in May  
0001 UTC Saturday through 2359 UTC Sunday.

Summer Phone Contest - held on the first full weekend in August  
0001 UTC Saturday through 2359 UTC Sunday.

Sprint - a 24 hour contest held on October 10th (10/10)  
0001 UTC through 2359 UTC.

Fall CW Contest - held on the last full weekend in October  
0001 UTC Saturday through 2359 UTC Sunday.

### 6.2.3 FREQUENCY AND MODES

Direct unassisted contacts only are permitted. Repeater, Satellite, IRLP or any other similar types of assisted contacts are NOT allowed.

CW Contests should be operated in the CW portion of the 10 meter band and operated using CW and/or any Digital mode (RTTY, PSK, etc).

Phone contests must be operated in the PHONE portion of the 10 meter band and may be operated using any approved Phone method (SSB, FM, AM).

The SPRINT utilizes both CW and Phone portions of the 10 meter band.

**NOTE: A QUIET ZONE between 28.490 and 28.510 shall be in effect during contests using the Phone portion of the 10 meter band to allow for non-contest use of the band.**

### 6.2.4 ENTRY CLASSIFICATION

Entrant may submit a log in ANY of the following classifications:

INDIVIDUAL: includes single station operators and can also include OM/XYL teams or any families or groups of people using individual call signs and 10-10 numbers.

QRP: same as an individual as listed above except that output power does not exceed 5 watts with CW/Digital operations and/or 10 watts with Phone operations during the entire contest.

CLUB: A Club must have a valid club station license issued by their National Licensing Authority. The Club must have active 10-10 membership. Club entries must additionally list the call, name and 10-10 number (if any) for all operators. Operators entering under a club entry may also enter an individual log for contacts made using their own call sign.

### 6.2.5 TRANSMITTER INFORMATION

An operator may operate mobile, portable or fixed. If they change their exchange QTH during the contest, the operator must show same in their log. The operator may enter a log from only one call district, province, or DX country. Multi-transmitters (two or more transmitters operating simultaneously, sharing one call sign) are NOT permitted in any QSO Party. If a single transmitter becomes inoperable, it is permissible to change to a replacement transmitter.

### 6.2.6 EXCHANGE

10-10 members send call sign, name, 10-10# and QTH (State, Province or Country). If received exchange does not have a 10-10#, then record a zero[0] in the log.

### 6.2.7 QSO POINTS

Two (2) points are awarded for contacts WITH a 10-10 number.

One (1) point is awarded for contacts WITHOUT a 10-10 number.

Duplicate entries should be retained in log and show a zero[0] for points.

Any log showing 10% or more errors may be handled as a checklog.

A station may be counted only once regardless of mode.

### 6.2.8 CHAPTER SCORE ASSIGNMENT

Any entrant who is a chapter member and whose contest operating location is within 150 miles of the primary net location of that chapter, may assign the entrant's score to that chapter. Contest scores for a sprint may not be assigned.

### 6.2.9 CONTEST ENTRIES

Logs shall be forwarded to the Contest Scorer as identified in the 10-10 NEWS or on the 10-10 web site. It is strongly suggested that logs be sent as soon as possible after the close of the contest. It is also recommended that DX logs should be sent AIR MAIL to insure they are received in good time. Any logs received with a postmark date AFTER the deadline date will be handled as a checklog. Any logs received more than 15 days after the contest entry deadline, regardless of postmark, will be discarded.

#### 6.2.9.1 ENTRY DESCRIPTION

Entries must contain a Cover Sheet, Log, and Dupe Sheet as described here: COVER SHEET will list the Event Entered, Entry Classification, US Call Area (W0-W9)

or DX Country, Chapter Score Assignment (if any), number of contacts and points with 10-10#, number of contacts and points without 10-10#, and total contacts and points claimed.

LOG must be listed in date/time order and list UTC Date, UTC Time, Call, Name, 10-10# (zero [0] if none), QTH and Contact Point Value.

DUPE SHEET is required for any logs exceeding 50 contacts. It may be either a list of all calls contacted in call sign order, or hand entered on a dupe sheet grid.

#### 6.2.9.3 ENTRY DEADLINE

Entries for all contests listed EXCEPT the Sprint shall be postmarked no later than 15 calendar days (this will always be a Monday) after the close of the contest. Mailed entries for the Sprint (held on 10/10) shall be postmarked no later than October 25th, unless that day falls on a Sunday, then the postmark deadline shall be October 26th.

### 6.2.10 CONTEST RESULTS AND AWARDS

Contest results will be posted on the 10-10 web site about 15 days after the closing deadline for the contest, and also printed in the 10-10 NEWS in the appropriate issue. Awards will be issued by the certificate manager for Top Ten Individual scorers in the World, the top Individual scorer in each US Call Area (W0-W9) and each DX Country, and for top QRP, CLUB and CHAPTER.

### 6.2.11 ANNIVERSARY QSO PARTY

This event runs from January 1 0001 UTC to December 31 2359 UTC. Entrants may submit a log of contacts with members that have 10-10's anniversary year contained in their membership number.

Example: 2002 is the 40th anniversary year of 10-10 International Net, Inc. Contact with members containing a "40" in their membership number (i.e., 72040, 69405, 64054, 40126, 00407) would count toward the contest. Each year the anniversary number changes, making a new group of members the focus of the contest and promoting the use of the 10-meter band. All general rules are applicable with the following exceptions:

During the calendar year (January 1 through December 31) make legal 10-10 contacts with 10-10 Number, Date, Call Sign, Name, QTH, with members containing the anniversary year in their membership number as described above.

Contacts must be made on the 10-meter band with any legal mode (AM, SSB, FM, PSK, CW, etc.) but all contacts must be made direct and unassisted. NO repeater, satellite, or Internet assisted contacts are permitted. The contact mode must be recorded in the log entry.

All submitted logs must contain only one entry for each 10-10 number contacted. Contacts MUST be listed in 10-10 number order and each entry must list the 10-10 Number, Date, Call Sign, Name, QTH and Mode, in that order.

This contest is for Individual entries as described in section 6.2.4 and certificates will be awarded for the Top Ten, however all entrants will be listed in the 10-10 NEWS.

Logs shall be forwarded to the Contest Scorer as identified in the 10-10 NEWS or on the 10-10 web site. Logs MUST be postmarked no later than January 15th of the year following the anniversary contest year entered. Only members in good standing (with dues paid) are allowed to submit logs.

### 6.2.12 MOBILE QSO PARTY

This event is held on the third Saturday in March from 0001 to 2359 UTC. All general rules are applicable with the following exceptions:

Fixed stations contact mobiles, mobiles contact everyone. Mobile applies to vehicular, marine, aeronautical or other mode of transportation. If in doubt, contact the Contest Manager. A station operating a mobile entry must be a true mobile. Sitting in the driveway and using the base station antenna or amplifier, or using commercial power is not permitted. RV generators are permitted only if the generator is used while in transit (moving).

Operation while your vehicle is parked across a county line, occupying two counties, counts as two counties and two contacts. Marine and aeronautical mobiles must be able to establish counties of operation.

The contest exchange shall be Call, Name, State, 10-10 Number (if a member, zero(0) if not), and county (if applicable). Only counties in the USA, Canada and England may be used as a multiplier.

Count one point for each contact whether a member or not. Fixed stations multiply the number of contacts by the number of different counties worked. Mobile stations multiply the number of contacts by the number of different counties worked PLUS a bonus of the number of counties worked from.

All stations must submit separate logs for the counties worked from. Log scores will be combined by the contest manager.

Logs shall be forwarded to the Contest Scorer as identified in the 10-10 NEWS or on the 10-10 web site. Logs MUST be postmarked no later than 14 days after the end of the contest. Only members in good standing (with dues paid) are allowed to submit logs.

### 6.2.13 FOR MORE INFORMATION

Current information about 10-10 and upcoming 10-10 QSO Parties is always available on the 10-10 web site. Contest cover sheets, logging forms and dupe sheets are also available for downloading or printing. The address is <http://www.ten-ten.org>

Any unanswered questions regarding the QSO Party rules may be forwarded to the Contest Manager.

# TEN TEN CONTEST RESULTS

## SUMMER SSB CONTEST Aug 5-6, 2006

### TOP TEN

CALL	1010#	CNTCS	PTS
01 N2EOC	37549	204/051	0459
02 WN4AMO	73825	196/063	0455
03 AH6RF	08121	124/064	0312
04 N5FJ	08285	135/028	0298
05 N0WY	68684	121/030	0272
KK7UU	10934	126/020	0272
06 AF2K	33388	110/025	0245
07 KQ4PK	63201	106/019	0231
08 W0WWT	69328	103/021	0227
09 W0DJM	58780	096/018	0210
10 KC8IM	31959	090/024	0204

### CALL AREA 0

CALL	1010#	CNTCS	PTS
N0WY	68684	121/030	0272
W0WWT	69328	103/021	0227
W0DJM	58780	096/018	0210
AC0L	73884	052/001	0105
N0WM	02724	036/000	0072
WA6POZ	21274	029/003	0061
N0QE	68075	022/004	0048
KA0EIC	47285	023/000	0046
K0RH	69471	021/001	0043
W0HIK	40678	019/001	0039
WB0GGO	03735	017/000	0034
WA5SWN	72300	016/001	0033
KB8CL	22987	013/001	0027
W0RTV	13962	007/000	0014
W0KCR	70006	001/000	0002

### CALL AREA 1

CALL	1010#	CNTCS	PTS
N1API	25468	083/015	0181
KE1HG	69090	056/008	0120
K1TC	40479	049/011	0109
W1SIX	35346	024/000	0048
K1IEQ	31363	017/006	0040
NN1J	41728	018/000	0036
N1ZN	73599	010/000	0020
K1TDO	72725	008/003	0019
WB2ART	68484	009/001	0019
K4IJK	17714	003/000	0006
N1YKH	70147	002/001	0005

### CALL AREA 2

CALL	1010#	CNTCS	PTS
N2EOC	37549	204/051	0459
AF2K	33388	110/025	0245
NA2M	05439	032/004	0068
W2VTV	71275	002/000	0004
AB0OX	72879	001/000	0002

### CALL AREA 3

CALL	1010#	CNTCS	PTS
N3PV	74441	049/005	0103
N3TGB	68129	047/006	0100
N3DUE	41066	030/003	0063
KA3WWG	56860	027/003	0057
N3FNE	52799	025/006	0056
N3TSV	68156	019/001	0039
KE3QH	66581	015/003	0033
K3BDO	53417	014/000	0028
N3TXH	68114	010/003	0023
NA3H	30502	009/002	0020
W3PWG	01538	007/001	0015
W3ITF	69729	005/000	0010
KF3BN	39524	001/000	0002

### CALL AREA 4

CALL	1010#	CNTCS	PTS
WN4AMO	73825	196/063	0455
KQ4PK	63201	106/019	0231
KC4TVZ	60783	077/004	0158
N4PN	74476	056/024	0136
KN4ZZ	57566	059/004	0122
WA4EEZ	15675	038/004	0080
KC4JAN	56060	038/002	0078
K4HAV	17605	038/001	0077
KF4WER	71949	037/001	0075
KU4W	20986	033/002	0068
N4EWG	29730	031/005	0067
KA9JNL	39838	031/000	0062
N2EGO	37582	027/004	0058
WA4WHV	60888	028/002	0058
W4CEO	30439	024/000	0048
KN4SS	56071	022/002	0046
KD4BVG	64773	022/000	0044
KA4ULH	74439	018/002	0038
N4ERM	34524	015/002	0032
K9EHP	02847	016/000	0032
KJ4RV	37776	016/000	0032
WB4HDW	72694	014/003	0031
KK3Q	26039	013/001	0027
K4EEF	58203	011/000	0022
AD4RX	67754	011/000	0022
W4DDR	44248	010/000	0020
K4GOP	73790	010/000	0020
WA4HT	72053	007/005	0019

KK4TB	18813	009/000	0018
N4WD	01758	008/001	0017
AL4T	74080	007/002	0016
KR4OE	62657	008/000	0016
WI4L	32076	006/002	0014
AA4PR	39481	006/000	0012
KS4WR	66309	006/000	0012
KF6JG	27197	006/000	0012
N4JED	49049	005/001	0011
KL7NL	62595	005/000	0010
K4CRM	74163	003/001	0007

### CALL AREA 5

CALL	1010#	CNTCS	PTS
N5FJ	08285	135/028	0298
N5MT	24949	093/014	0200
KB5UNX	64337	082/007	0171
K5FBS	48461	079/012	0170
N5WYR	62116	058/003	0119
W5GVP	11572	051/002	0104
KE5CUT	74387	043/009	0095
WJ50	37215	042/009	0093
NK5W	64094	039/003	0081
K5CC	50708	040/001	0081
K5LBU	51322	035/002	0072
N5DAS	35877	033/002	0068
KF5LO	72289	032/002	0066
N5DTT	73679	027/003	0057
W5VRX	69779	026/001	0053
KA5EYH	70252	026/000	0052
NJ5T	58487	021/001	0043
KD5DE	33513	020/001	0041
KD5ZD	37258	012/001	0025
WX5I	67839	012/001	0025
KD5HIP	71476	011/001	0023
AD5WI	74431	011/001	0023
WD8JKV	20805	010/001	0021
KB5DQX	43610	010/001	0021
N5QV	10587	008/000	0016
W5QVS	57608	002/000	0004

### CALL AREA 6

CALL	1010#	CNTCS	PTS
N6OPR	45715	059/016	0134
N6XD	18637	042/003	0087
KA6GPC	43555	039/005	0083
KG6BOV	69136	040/002	0082
K6VMN	31623	037/002	0076
KE6RQQ	74224	035/000	0070
WB6NFO	44670	033/002	0068
WB6OJB	70675	032/003	0067
KD6BYI	63108	028/002	0058
W6JNU	40127	025/001	0051
KI6ACO	74414	024/002	0050

**YOU HAVE TO MAKE CONTACTS TO GET RESULTS**

# TEN TEN CONTEST RESULTS

K6KOZ	74447	023/002	0048	CANADA				CHAPTER SCORES							
KD6SZF	74446	024/000	0048	CALL	1010#	CNTCS	PTS	CHAPTER	LOGS	PTS					
K6PCM	73365	019/001	0039	VE5BF	42037	022/003	0047	PossumTrot	15	1057					
W6ASP	73446	015/001	0031	GERMANY				Portland500	4	0715					
N6JQI	46305	014/000	0028					ChannelIslands	10	0586					
WA6VLS	27158	004/001	0009					LilacCity	5	0552					
CALL AREA 7								S.H.O.T.	6	0485					
				DF9JS	45863	029/002	0060	Neanderthal	9	0466					
				DL2IAN	72712	028/003	0059	Trotters&Pacers	1	0459					
				DJ2YE	68904	027/002	0056	Lonestar	8	0392					
CALL	1010#	CNTCS	PTS	DF3TE	69610	024/003	0051	RedRiverValley	3	0380					
KK7UU	10934	126/020	0272	DH1PAL	69212	024/003	0051	STxLightHorseBrigade	4	0371					
AC7HI	69139	060/007	0127	DK2CR	74308	018/000	0036	Aloha	2	0327					
WB7BBI	74443	058/004	0120	HAWAII				C.A.T.T.	4	0264					
W6AEA	68082	055/009	0119					CALL	1010#	CNTCS	PTS	CastleCraig	4	0225	
K7KTP	13326	039/009	0087					AH6RF	08121	124/064	0312	SkyBlueWaters	1	0210	
K7PRZ	47633	039/006	0084					NH7PE	74456	006/003	0015	BattleRoad	3	0208	
AC7GP	68357	034/004	0072	JAPAN				MichiganRobins	1	0204					
K7CWS	50288	031/004	0066					CALL	1010#	CNTCS	PTS	CityOfLights	3	0194	
KB7EQW	47699	030/005	0065					JH7RTQ	69817	002/012	0016	FtMcHenry	3	0152	
AA7FK	53104	022/000	0044					NEW ZEALAND				M.L.B.	1	0134	
AC6FU	10937	020/004	0044	CALL	1010#	CNTCS	PTS					Gateway	3	0120	
WA7SRZ	06224	014/005	0033	ZL1LE	23497	004/000	0008					ArizonaDesert	3	0101	
N7YU	72571	012/003	0027	QRP								ChesapeakeBay	1	0100	
K7SIM	17092	007/000	0014					CALL	1010#	CNTCS	PTS	Keystone	1	0083	
N7YG	65084	005/000	0010					ZL1LE	23497	004/000	0008	NewMexicoMudDucks	1	0081	
KC7KML	69401	004/000	0008					CLUB				OceansOfTheWorld	1	0075	
KM5FF	50356	002/000	0004	CALL	1010#	CNTCS	PTS					CityOfRoses	2	0074	
CALL AREA 8				N0LAY	43501	051/010	0112					CrazyEights	3	0071	
				WB5CTQ	74146	022/000	0044					Milwaukee	3	0067	
				N4VB	23195	020/001	0041	Suncoast	1	0058					
				AD5IF	73372	017/002	0036	AirCapital	1	0043					
CALL	1010#	CNTCS	PTS	(Op. KK7UU)				Chief Seattle	1	0033					
KC8IM	31959	090/024	0204					W7PIR	74376	126/020	0272	Mo-KanTenners	1	0033	
K8DEL	02978	079/008	0166					(Op. KQ4PK,N4VEA)				ElectricCity	1	0022	
N8HSO	45424	029/002	0060									W4OIX	54432	106/019	0231
WC8E	27415	020/003	0043	(Op. W6AEA, AC7GP)								DownUnder	1	0008	
K8IZK	73889	015/000	0030									N7LC	68960	054/009	0117
KB8UUZ	67605	012/000	0024					(Op. W6AEA, AC7GP)				CHECKLOGS - THANKS!			
W8PJY	14574	012/000	0024												K7YY
NF8M	74222	005/000	0010	(Op. WA4EEZ)											
W8TOM	74496	003/000	0006												W4GAC
W8KNO	71899	002/000	0004					(Op. DF3TE)							
CALL AREA 9												DL0KAC	73416	024/003	0051
				DK0HHC	73417	024/003	0051					NM5H	68588	065/008	0138
				DK0DWK	73418	024/003	0051					N6RZR	47980	008/001	0017
				KD5BZC	42114	020/001	0041	NR5A	28451	004/000	0008				
CALL	1010#	CNTCS	PTS	(Op. DH1PAL)				WB0IWG	59356	002/000	0004				
NA9A	31121	062/006	0130					SOAPBOX							
N9ASC	28018	025/004	0054									The common thread running through all the comments received was how bad the conditions were. Guess they could have done a lot worse, but there were 191 logs sent in representing 5972 contacts with 10-10 numbers and 869 contacts with no number. Had to have been SOME people out there! - Steve N0WY			
N9DAJ	35121	025/000	0050												
KD4SIR	74213	020/004	0044												
N9AAI	31137	014/003	0031	(Op. DH1PAL)											
W9SFH	41267	011/001	0023					The common thread running through all the comments received was how bad the conditions were. Guess they could have done a lot worse, but there were 191 logs sent in representing 5972 contacts with 10-10 numbers and 869 contacts with no number. Had to have been SOME people out there! - Steve N0WY							
WB9OMC	55959	011/000	0022												
W9WCF	57348	006/001	0013												
W9YBH	71221	005/000	0010	(Op. KD5DE)											
								N7YHC	74457	015/000	0030				
								(Op. KK7UU)							

**YOU HAVE TO MAKE CONTACTS TO GET RESULTS**



# TEN TEN AWARDS

To apply for any 10-10 Award, paid-up membership is mandatory. You are not required to send in proof as the Awards Manager has the current membership database. All contacts made for any award must be legal 10-10 contacts (a full exchange of Call, Name, QTH and 10-10 number from BOTH members). An application listing the rules for each award is available from the appropriate Award Manager listed at the end of the award listings. Please send your request with a #10 (business size) envelope, self-addressed and stamped with one unit of first class postage (or enclose one IRC for GB Award), to the Award Manager for the Award you are interested in obtaining. Please no phone calls to Award Managers for an application or list of rules. Contact requirements and rules for all Awards are available on the 10-10 website - [www.10-10.org](http://www.10-10.org)

## TOP TEN HONOR ROLL

Award Manager: Doris Slye  
N3TGB #68129

#	CNTCS	CALL	10-10#
01	24600	WA5JDU	03017
sk	21000	WB1DBZ	26001
sk	19400	W0RWC	00581
sk	17000	PJ2WG	27999
sk	16700	W4WKQ	33299
sk	16500	K5MRU	00218
sk	14100	WB7NUU	17416
02	11600	K5GAY	11825
sk	11600	WA9LIC	01599
03	11500	K0PV	09902
sk	11400	N5CUQ	00040
04	10800	NS4M	41176
sk	10800	KB0ON	29849
sk	10600	W9IAI	35140
05	10000	W6YRJ	11911
	10000	K6PZE	01341
sk	10000	KS6A	08873
sk	09700	K4HTU	05723
06	09300	N1API	25468
07	09200	WD0SFT	37933
08	09100	N5DAS	35877
09	08600	AC6FU	10937
10	08500	K1WQU	02225
sk	08500	W5EIJ	11732

## 1000+ BAR AWARD

Award Manager: Doris Slye  
N3TGB #68129

CERT #	1000 BAR	10-10#
1550	DL2IAN	72712
1551	KD5HIP	71476
1552	W5OYA	23691

## 500 BAR AWARD

Award Manager: Dan Morris  
KZ3T #41015

VP #	CALL	10-10#
3301	KE1HG	69090
3302	KF4RBP	68167

## LUCKY 13 AWARD

Award Manager: Dan Morris  
KZ3T #41015

CERT #	CALL	10-10#
	none issued	

## VP AWARD

Award Manager: Carl Fisher  
W0HIK #40678

CERT #	VP WAS	10-10#
045	CALL KC8IM	31959

CERT #	VP300	10-10#
209	CALL KA9PCU	73562

CERT #	VP500	10-10#
102	CALL K7CWS	50288

## CW AWARD

Award Manager: Lee Zalaznik  
KI6OY #50948

CW #	25 CW CONTACTS	10-10#
089	CALL K6TV	30896

## WORKED ALL CONTINENTS AWARD

Award Manager: Randy Camron  
AJ5ZX #71083

CERT #	CALL	10-10#
	none issued	

## DX COUNTRIES AWARD

Award Manager: Mike Davidson  
N5MT #24949

### BASIC AWARD 25 COUNTRIES

CERT #	CALL	10-10#
618	KA7ICF	46221

### 35 COUNTRIES

CERT #	CALL	10-10#
356	KT4QU	63226

### 45 COUNTRIES

CERT #	CALL	10-10#
252	KT4QU	63226

### 95 COUNTRIES

CERT #	CALL	10-10#
046	VK6PP	38922

## COUNTIES AWARD

Award Manager: Brad Kimble  
K0DBK #55192

CERT #	100 COUNTIES	10-10#
515	CALL VA3AG	74311

CERT #	200 COUNTIES	10-10#
320	CALL VE3ZLN	74007

CERT #	700 COUNTIES	10-10#
074	CALL WN4AMO	73825

## OM/XYL AWARD

Award Manager: Marcus Lieberman  
KM5EH #71103

CERT #	BASIC 25 TEAMS	10-10#
	CALL none issued	

# TEN TEN AWARDS

## WORKED ALL STATES AWARD

Award Manager: Eva Donaldson  
WBØCON #53964

CERT #      CALL                      10-10#  
                 none issued

## MOBILE AWARD

Award Manager: Ed Redwine  
K5ERJ #11843

## BASIC MOBILE AWARD

CERT #      CALL                      10-10#  
                 none issued

## GB COUNTIES & REGIONS CERTIFICATE

Award Manager: Mike Crawshaw  
G4BLH #18446

## BASIC CERTIFICATE 5 COUNTIES/REGIONS

CERT #      CALL                      10-10#  
                 none reported

## WPX (PREFIX) AWARD

Award Manager: Al Longo  
NN1J #41728

(Last issue the editor screwed up and listed two 100 prefix sections. The second one was actually the 300 prefix award. Congratulations to DH1PAL and DF3TE)

## 500 PREFIX

CERT #      CALL                      10-10#  
037          N3TGB                      48129

## DIGITAL AWARD

Award Manager Mel Sojka  
KD5DE #33513

## Basic - 25 contacts

CERT#	CALL	10-10#
001	K5FBS	48461
002	WD5EDR	23693
003	KA6VZL	46310
004	N6EMI	47123
005	KC4TVZ	60783
006	WA4EEZ	15675
007	AD4RX	67754
008	N9AVY	43313
009	KB9NZX	68570
010	KD4VBG	64773
011	N60PR	45715
012	K6MQ	71487
013	WI0S	34102
014	W4JAG	42577
015	W2BOC	71096
016	WN4AMO	73825
017	WG5T	60027
018	NN1J	41728
019	K5CC	50708
020	KA5EYH	70252
021	KD5DE	33513
022	W4GTM	66628
023	WA0CKO	37994
024	KF4MH	74495
025	N0WY	68684
026	K4QHH	26040
027	KK7UU	10934

028	W7PIR	74376
029	N7YHC	74457
030	N5DAS	35877
031	KC9FOA	74418
032	N7YG	65084

## 50 Contacts

CERT#	CALL	10-10#
001	K5FBS	48461
002	WN4AMO	73825
003	KA6VZL	46310
004	KC4TVZ	60783
005	WA4EEZ	15675
006	KB9NZX	68570

## 75 Contacts

001	WN4AMO	73825
002	K5FBS	48461

## RTTY Endorsements Issued

CERT#	CALL	10-10#
006	WA4EEZ	15675
002	WD5EDR	23693
021	KD5DE	33513
023	WA0CKO	37994
003	KA6VZL	46310
001	K5FBS	48461
019	K5CC	50708
005	KC4TVZ	60783
010	KD4VBG	64773
007	AD4RX	67754
016	WN4AMO	73825
024	KF4MH	74495

## AWARD MANAGERS

<b>Bar 100-900</b> .....Dan Morris, KZ3T # 41015 .....	112 Royal Oak Ct., Lenoir, NC 28645 .....	(828) 728-5049 ..dbm72941mo@charter.net
<b>Bar 1000+</b> .....Doris Slye, N3TGB #68129 .....	708 Doages Dr., Millersville, MD 21108-2132 .....	(410) 923-2811.....n3tgb@aol.com
<b>VP Bar</b> .....Carl Fisher, WØHIK #40678 .....	5 Angelina Dr., Augusta, KS 67010-2262 .....	(316) 775-5900.....wzerohik@earthlink.net
<b>VP WAS</b> .....Carl Fisher, WØHIK #40678 .....	5 Angelina Dr., Augusta, KS 67010-2262 .....	(316) 775-5900.....wzerohik@earthlink.net
<b>VP Lucky 13</b> .....Dan Morris, KZ3T # 41015 .....	112 Royal Oak Ct., Lenoir, NC 28645 .....	(828) 728-5049 ..dbm72941mo@charter.net
<b>WAC</b> .....Randy Camron, AJ5ZX #71083 .....	7641 Gladiola, San Angelo, TX 76901 .....	(325) 659-2802.....AJ5ZX@cox.net
<b>Counties</b> .....Brad Kimble, K0DBK #55192 .....	3855 66th St. E, Inver Grove Hts, MN 55076-2222 .....	(651) 450-1173 ..k0dbk@comcast.net
<b>Countries</b> .....Mike Davidson, N5MT #24949 .....	3518 Bellefontaine St., Houston, TX 77025-1310 .....	(713) 668-8408.....N5MT@aol.com
<b>CW</b> .....Lee Zalaznik, KI6OY #50948 .....	334 Olivina Ave., Livermore, CA 94551-6137 .....	(925) 455-0361 .lee.zalaznik@sbcglobal.net
<b>Digital</b> .....Mel Sojka, KD5DE #33513 .....	353 Atlantic Ave. Shreveport, LA 71105-2908 .....	(318) 861-7012.....kd5de@nwla.com
<b>Mobile</b> .....Ed Redwine, K5ERJ #11843 .....	9 Yellowrose Lane, Augusta, KS 67010-2230 .....	(316) 775-5700 ..k5erj@yahoo.com
<b>OM/XYL</b> .....Marcus Lieberman, KM5EH #71103 .....	2300 Hurley Drive NW, Albuquerque, NM 87120-1013 .....	(505) 836-1724 ..buckml@lobo.net
<b>WAS</b> .....Eva Donaldson, WBØCON #53964 .....	12933 W Montana Drive, Lakewood, CO 80228-4244 .....	(303) 989-0475.....wb0con@comcast.net
<b>WPX</b> .....Al Longo, NN1J #41728 .....	PO Box 94, Springfield, ME 04487-0094 .....	(207) 738-3268 ..nn1j@midmaine.com
<b>GB Counties</b> .....Mike Crawshaw, G4BLH #18446 .....	50 Kibble Grove, Brierfield, Nelson, Lancs, England BB9 5EW .....	01144 1282 613754.....g4blh@zen.co.uk

## DX Holiday in Palau

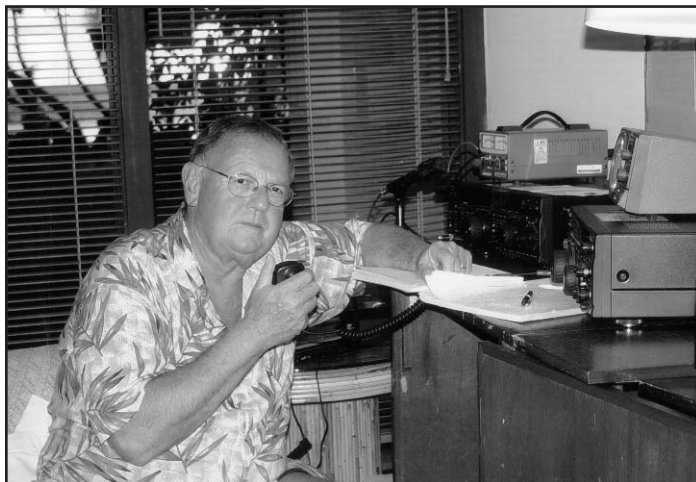
It all started by reading a story in QST in December 2005, about a hotel on Palau with an amateur radio station. The famous room 214 at the Palau Pacific Resort could be rented! It was going to be Joani's 65th birthday in April, she didn't want a party, so a trip to Palau sounded very good to her.

The first thing I had to do was obtain a Palau license. I got George Ngrarsaoi's (T88GN) name and address from the QST article and he gave me all the information I needed to obtain my license. A copy of my passport, U.S. license, \$10 U.S., a SASE and my license arrived early in February 2006, T88AP.

Step 2 was to figure out how to get there. We contacted our travel agent, Karen Goodrich and Horst Engel at VIP Travel in Brea CA. We gave Karen the information regarding when and where we wanted to stay and by magic (sure) we had our tickets.

I received information about the equipment that was available and since I had never used Yaesu equipment, I contacted Jim and Paul Jun (Jun's Electronics' in Culver City, CA). They were most helpful in supplying me with the information I needed. I also visited the "shack" of Pete Fleming, N6LM0, who had a rig similar to the equipment on Palau.

Because I had never operated from a foreign country I called Arnie, N6HC, who also gave me several good ideas to make operations easier. It was also nice that I was able to work Arnie from Palau.



So, on the 7th of April we were on Continental Airlines on our way to the Republic of Palau. But first we had layovers in Honolulu and Guam. Total time to get there was about 23 hours including time and day changes.

We arrived in Koror, Palau late at night and there was about a half-hour drive to the hotel. We checked in and went to our room. A very comfortable, clean room with a beautiful view of the beach, but no radio in sight. I called the front desk and told them of the problem and in a few minutes in rolled two large wooden crates marked Yaesu. The engineer then went up the hill to the antenna and raised it.

I set up the Yaesu FT 920 to the antenna and started my DX holiday on Sunday, the 9th of April. (I lost a day going over the International Date Line). The first day I was able to work mostly Australia and Japan but also worked Alaska. I wasn't able to set up the Yaesu FT1000 to the VL1000 linear amplifier so I called the engineer but the person that knew about the radio was off duty.

Bright and early the next morning, the chief engineer, Mr. Sone arrived. He had to make a couple of calls to Japan and I was off and running. I contacted my friend Colin, VK2VFV, and remember telling him I was using so much





# 10-10 INTERNATIONAL NEWS

A QUARTERLY PUBLICATION OF TEN-TEN INTERNATIONAL NET, INC.

power, I felt like Superman. At home I'm using 100 Watts PEP into a vertical (don't get me wrong, I'm happy with what I have at home).

On the 10th of April I made about 40 contacts, mostly to Australia, Japan, China, Saipan and Guam. A lot of my QSO's the first several days were long and interesting, and very enjoyable. Especially Jim, ZK1JD, who has been on Rarotonga for 34 years and Jack in Perth, VK6JZ, who was 85 years old and a ham most of his life.

On Tuesday I made about the same amount of QSO's and had a nice visit to the town of Koror by taxi. Since I save postage stamps, we visited the post office. We also visited the only U.S. Marine vehicle left on the main island. It was behind one of the government buildings, covered up by the foliage. The main tribute to the Marines is on the Island of Peleliu, which is a day trip from our hotel, by boat. Since our time was very limited we weren't able to visit Peleliu, but when we return we will be sure to take the time. We also visited a very nice gift shop and the only liquor store on the island. After all, we were on vacation.

On the 12th of April we visited a bombed out Japanese communication center and several tanks and AA guns. That night there was a good opening into the western United States, and about 7:30PM I got in a pile up that is a hams dream. I had never experienced being wanted so much in my life. After about 4 hours, Joan suggested that I QRT.

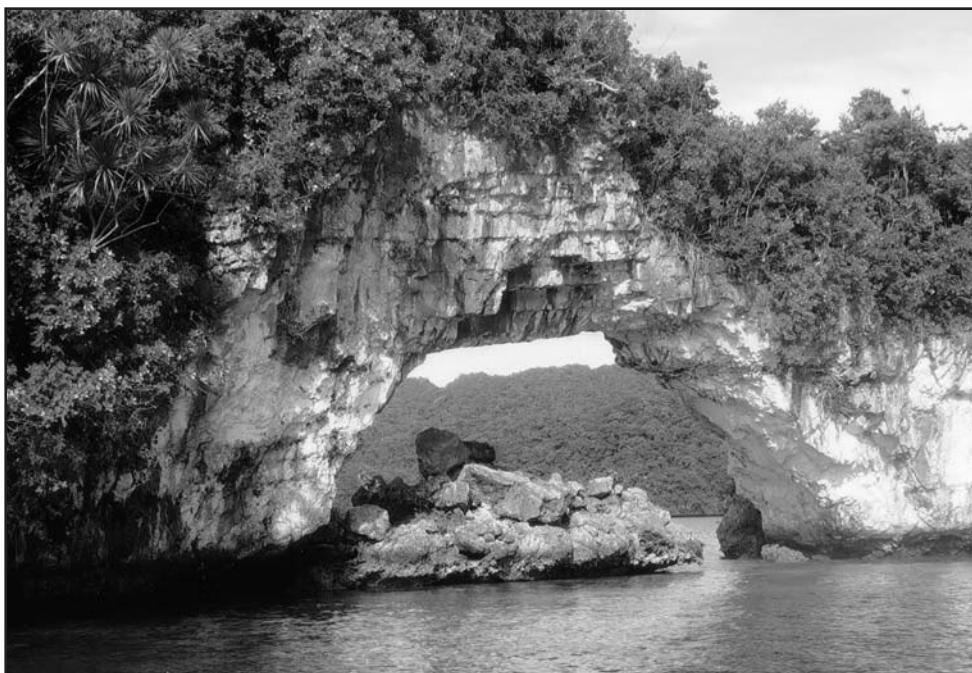
On Thursday we decided to go snorkeling and took a day trip to the Rock Islands. We had a great time, saw hundreds of species of tropical fish, giant clams and swam in the salt water jelly fish lake. It was a good break from the radio, but I sure wanted to get back to the hotel. After dinner I was in another pile up, with many Russian, Scandinavian, African, and Indian stations. I worked well into the night and the morning hours.

Friday, our last day, started with an early morning breakfast and then back to the radio. I had several short openings into the States and there were steady contacts until early afternoon. So I took a break for a

couple of hours and went out to the beach for the last time. I restarted about 4 PM and there was another pile up until I had to leave at 11:15PM. The bus to the airport was leaving at 11:30. I was sad to have to QRT because there were so many to contact but no time left.

All in all, I feel I did a pretty good job making as many contacts as I did. 450 contacts with very few duplicates. I called CQ on 28.345 several times daily but only had 4 QSO's on 10 Meters. I learned a lot about DXing and I learned ways I could do it better. So I guess there will have to be a next time!

Arnold (Doc) Kalan, M.D. T88AP  
Home call WB6OJB 10-10 #70675 VP 3182



# 10-10 INTERNATIONAL NEWS

A QUARTERLY PUBLICATION OF TEN-TEN INTERNATIONAL NET, INC.

## Silent Keys

Compiled and listed by  
Ruth Bartholomew NØKDB #48715



*It is with sorrow that we note the following Ten Ten members who are now Silent Keys. We extend our sincere condolences to the families and friends of these SK members whose calls and Ten Ten numbers will forever be kept in the records of the Ten Ten Net.*

02416 W2RNV .....Ralph Ludy .....Placida, FL  
03799 N7ZL .....Richard Bendicksen .....Norland, WA  
04147 WA7KNK ...Walter Statton .....Carson City, NV  
04976 W2KG.....Harry Marschausen.....Delray Beach, FL  
05731 WA2ABL....Ronald Johnson.....Rochester, NY  
06849 W5YU.....Otto Degner .....Farmington, NM  
07042 W1BXM ....Guy Bowden.....Nashua, NH  
08143 WA4SZK ....Don O'Neil.....Florence, SC  
09770 W4NQU.....Percy Paramore Jr .....Hendersonville, NC  
11911 W6YRJ .....Harry Young .....Solvang, CA  
12022 W0NIZ.....Paul Cowell.....Golden, CO  
12907 KH6IAA .....Alfred Pacheco.....Hilo, HI  
13226 AI4W .....James 'Gene' Marden .....Nokesville, VA  
13489 K4XY.....Bernard Stuecker .....Vienna, VA  
14363 K0BR .....Daniel Dibble .....Mission Hills, KS  
14414 WA3YMV...Leland Kent Jr.....Brooksville, FL  
15058 W5GAS .....Boyd Fry .....Fort Smith, AR  
16637 AD5KP .....Robert Rees .....Ripley, MS  
16837 WA3ANA ...Walter Woodbridge .....Erie, PA  
19040 VK4QN.....Lin Wearne.....Burleigh QLD, Aust  
19165 VK3KBG ....Jim Watts(ex VK3NFQ)Morwell VIC, Aust  
19201 WA4EGQ...Eddie Cary .....Greenville, KY  
22976 WA8AAP ....Melvin Gregory .....Owosso, MI  
25054 KE6IM .....Laudell Ludwig .....Santa Maria, CA  
25508 VE7KA .....Donald Brumwell.....Vernon BC, Can  
26977 KA7BPB .....Jay Hansen .....Roosevelt, UT  
27659 W2ATM.....Dwight Temple.....Long Beach, NY  
28597 WD8ADH...Norlin Downey .....Elyria, OH  
29384 KC2EN .....Arthur Rissberger Jr .....Sedona, AZ  
33157 W9ALB .....Al Blacker Jr. ....Hoffman Estates, IL  
37190 KC1CP.....Pete Matson .....Niantic, CT  
37472 N3DHC.....Clarence Marks .....Pittsburgh, PA  
37874 ZL1OV.....Neil Kirton .....Pokeno, NZ  
37960 W0YNZ .....Ernie Draheim.....Coon Rapids, MN  
38229 W9BZP .....Jacob Ousley.....Effingham, IL  
38635 W1JAD .....John Dority Sr. ....Flintville, TN  
38890 WA4QPD....Bobby Harris.....Humboldt, TN  
39529 KY3S .....Robert Farlow .....Salisbury, MD

41900 K2JFE .....Paul Wiegert .....Staten Island, NY  
42706 WA8FBN ....Arthur Trout .....Las Cruces, NM  
42944 VE4ANG ....Adam Novak .....Winnipeg MB, Can  
44987 W7PCV .....Willis Hobson.....Port Richiy, FL  
45495 KB8DFY....Charles Barker .....New Waterford, OH  
48369 W2RAS.....Robert Branch.....Macedon, NY  
48755 N0LUA .....Mervyn Massey .....Parker, CO  
49220 W0UUS .....R. Lyle Surtees.....Wichita, KS  
50712 KC4GOA ....Leonard Deibert.....Fort Myers, FL  
52766 VE7DNR ....William Roswell .....Kelowna BC, CAN  
54945 K9IBP .....Larry Kebl .....Collinsville, IL  
55480 WA8HLD....Cecil Menold.....Struthers, OH  
56112 N0LXW .....Kim Grimes .....Forest Lake, MN  
57101 N5OOW.....Julius Burge.....Carriere, MS  
57926 KM6UY .....Robert Magee .....Pittsburg, CA  
58051 KA7QFK ....Kenneth Myers .....Glendale, AZ  
61168 WZ0W .....Ronald Brown .....Spokane Valley, WA  
61779 KB2MQK ...Charles Renda.....Woodside, NY  
61828 KD4CGL ....David Smotherman Sr.....Lebanon, TN  
62064 K6FW .....Phil Jacobsen .....San Diego, CA  
62103 AD5MV .....Parker Dunham .....Fayetteville, AR  
63891 AA0TG .....James Barnett .....Leavenworth, KS  
64057 K9VD.....Larry Toschlog .....Greens Fork, IN  
65245 KA0ARS.....Greg Sargent .....Harlingen, TX  
67459 N9LZ .....Larry Zacharias.....Wauconda, IL  
67468 W9KUP .....Francis Mellette .....Cameron Park, CA  
67970 KB4BCC.....Kenneth Abel .....Newport News, VA  
68287 KE4WWE...Richard Cherry III.....Ocala, FL  
69260 W0SAV .....Kenneth Neal .....Overland Park, KS  
69355 K8QLM .....Richard Brege.....Shelby Township, MI  
69405 W4DEL.....Francis Barnes.....Irvine, KY  
70928 WA5QAC....Robert Allen Jr.....Wetumpka, AL  
71264 WB0VAM...Lawrence Anthony .....Kennett, MO  
72086 WA5GEV....George Vincent .....Fort Lauderdale, FL

## New Life Members

01056 .....K2ZEG.....Henry E Kobler  
22141 .....KR4W .....Ernest M Bryant  
31072 .....WD5JNC .....John E Kreckler Jr  
34316 .....WS7R.....Stephen R Bird  
36142 .....K7NAL .....Scotty F Deffendol  
63201 .....KQ4PK .....Robert E Jones  
72771 .....K4RKN.....John C Howard Jr  
73009 .....W1HIV .....Patrick S Harris  
74391 .....WA8VSJ .....Arthur R Lewis  
74531 .....W6ZJE .....Charles W Kohlenberger



# TEN TEN NET GUIDE

*as of 31 August 2006*

DAY	ZSUM	ZWIN	CHAPTER	QTH	FREQ	DAY	ZSUM	ZWIN	CHAPTER	QTH	FREQ
SUN	0300	0400	Chief Seattle	Seattle, WA	28630	WED	0100	0200	Houston SHOT	Houston, TX	28488
SUN	0830	0930	Borinage	Colfontaine, ON	28785	WED	0200	0300	10 Bar X	El Paso, TX	28440
SUN	1200	1300	Elmer J Fudd Net	Berwick, PA	28340	WED	0300	0400	Edmonton Area 10-10ers	Edmonton, ALB	28520
SUN	1300	1400	GB Ten	Spalding, G	28860	WED	0300	0400	Chief Seattle	Seattle, WA	28630
SUN	1300	1400	Arlington	Arlington, VA	29200	WED	1200	1300	Elmer J Fudd Net	Berwick, PA	28340
SUN	1430		Cincinnati Area Ten Tuners	Milan, IN	28960	WED	1700		Gold City	Dawsonville, GA	28425
SUN	1500	1600	Neanderthal Chapter	Leichlingen, DL	28355	WED	1700	1800	Channel Islands	Oxnard, CA	28340
SUN	1530	1630	Steel City	Chicago, IL	28420	*WED	1900	2000	Outlaws on Ten	San Antonio, TX	28644
SUN	1630	1730	Possum Trot	Raeford, NC	28345	WED	2200	2300	Route-66	Boonville, IN	28370
SUN	1700	1800	Major League Baseball	@ La Mirada, CA	28380	WED	2300	2359	Michigan Robins	Southfield, MI	28493
SUN	1800	1900	Portland 500	Clackamas, OR	28350	W/T	2359	0059	Battle Road	Mason, NH	28390
SUN	1900	2000	Springbok	Oliver Springs, TN	28385	THU	0001	0100	Egyptian Radio Club	Granite City, IL	28420
SUN	1930		North Georgia	Atlanta, GA	28610	THU	0001		Cradle of the Confederacy	Pike Road, AL	28350
SUN	2100	2200	Possum Trot	Raeford, NC	28150 CW	THU	0100	0200	Cowtown	Arlington, TX	28710
SUN	2200	2230	SO TX Lighthouse Brigade	San Antonio, TX	28345	THU	0100	0200	Gateway	St Louis, MO	28650
MON	0001	0100	Chesapeake Bay	Chestertown, MD	28435	THU	0100	0200	Milwaukee	Milwaukee, WI	28365
MON	0030	0130	Minuteman	Saugus, MA	28150 CW	THU	0130	0230	Cowtown	Arlington, TX	28460
MON	0100		Arizona Desert 10-10 Net	Phoenix, AZ	28445	THU	0230	0330	Windfarms	Livermore, CA	28485
MON	0100	0200	Milwaukee	Milwaukee, WI	28365	THU	0300	0400	Chief Seattle	Seattle, WA	28630
MON	0100	0200	Lonestar	Arlington, TX	28460	THU	1200	1300	Elmer J Fudd Net	Berwick, PA	28340
MON	0130		Palmetto	Hollywood, SC	28450	THU	1300	1400	GB Ten/Laurel Mancunium	Spalding, G	28870
MON	0130	0230	Bauxite	Benton, AR	28470	THU	2000		Branding Iron	Kemper, TX	28345
MON	0200	0300	Sky Blue Waters	St Paul, MN	28715	FRI	0001	0100	Crazy Eights	McKeesport, PA	28388.8
MON	0300	0400	Chief Seattle	Seattle, WA	28630	FRI	0001	0100	Fort McHenry/Yodar Kritch	Arbutus, MD	28370
MON	1200	1300	Elmer J Fudd Net	Berwick, PA	28340	*FRI	0100	0200	Sky Blue Waters	Afton, MN	28380
MON	1700		Colorado Quartermaster	Widfield, CO	28120 PSK	FRI	0300	0400	Chief Seattle	Seattle, WA	28430
MON	2030		Space Coast	Elmendorf, TX	28355	FRI	1200	1300	Elmer J Fudd Net	Berwick, PA	28340
MON	2130	2200	Colorado Quartermaster	Widfield, CO	28360	FRI	1400		New Waterkant	Boerm, DL	28355
MON	2300		Oceans of the World	Tampa, FL	28375	FRI	2230	2130	Down Under	Aukland, ZL	28530
MON	2300	2359	Trotters and Pacers	Cranberry, NJ	28755	SAT	0001	0100	Fort McHenry/Yodar Kritch	Arbutus, MD	28370
MON	2330		Santa Fe Trail	Galesburg, IL	28695	SAT	0001	0100	MAINE-iacs	North Haven, ME	28402.5
TUE	0001		Sun Coast Radio	Tampa, FL	28375	SAT	0100	0200	Busy Bee	San Angelo, TX	28360
TUE	0100	0200	Colorado Centennial	Lakewood, CO	28340	SAT	0300	0400	Chief Seattle	Seattle, WA	28630
TUE	0100	0200	City of Lights	St Charles, IL	28150 CW	SAT	1200	1300	Elmer J Fudd Net	Berwick, PA	28340
TUE	0130	0230	City of Lights	St Charles, IL	28720	SAT	1430	1530	Steamboat Plus	Shreveport, LA	28855
TUE	0130	0230	Bauxite	Benton, AR	28470	SAT	1500	1600	Republic of Texas	Eules, TX	28460
TUE	0130	0230	OK Route 66 Chapter	Oklahoma City, OK	28390	SAT	1510	1610	Louisiana Pelican 10-10 Net	Baker, LA	28450
TUE	0200	0300	Concho Valley	San Angelo, TX	28360	SAT	1600	1700	City of Roses	Beaverton, OR	28835
TUE	0230	0330	Golden Bear	Rancho Cordova, CA	28485	SAT	1630	1730	Boomtown	Burkburnett, TX	28402
TUE	0300	0400	Chief Seattle	Seattle, WA	28430	SAT	1700	1800	Lilac City	Spokane, WA	28390
TUE	0300	0400	Bay Area	Hayward, CA	28475	SAT	1730	1830	Tango	Buenos Aires, LU	28650
TUE	0500		Aloha	Hakalau, HI	28487	SAT	1800		Keystone/Keystone Stars	Brea, CA	28765
TUE	1200	1300	Elmer J Fudd Net	Berwick, PA	28340	SAT	1900		Peshtigo Fire	Wisconsin Rapids, WI	28370
TUE	1500	1600	New Mexico Mud Ducks	Albuquerque, NM	28835	SAT	2000		Restoration Project	Port Alberni, BC	28747
TUE	1800		Electric City	Melbourne, FL	28425	SAT	2200		Alii	Lihue, HI	28730
TUE	2000		Branding Iron	Kemper, TX	28345	*SAT	2300		Oregon Trailblazers	Lander, WY	28450
TUE	2030	2130	Twin Cities	Inver Grove Heights, MN	28325	(*) New or change					
TUE	2300	2359	Fort McHenry	Arbutus, MD	28370	All changes to the above times and/or frequencies should be referred to the Chapter Manager if you desire accuracy of your net. Chapter Manager: K5FBS, Clifford A Taylor, 22707 Red Mountain Drive, Elmendorf, TX 78112-6034. Email: catk5fbs@aol.com					
T/W	2330	0030	Republic of Texas	Eules, TX	28560						
WED	0001	0100	Castle Craig	Meriden, CT	28375						
WED	0030		Kansas Trails	Grove City, MN	28385						
WED	0030	0130	All American City	Birmingham, AL	28400						
WED	0030	0130	Minuteman	Saugus, MA	28409						
WED	0100		Cincinnati Area Ten Tuners	Milan, IN	28800						



## MEMBERSHIP INFORMATION AND SERVICES

### WOULD YOU LIKE TO JOIN 10-10?

*Here is what you need:*

1. You must hold a valid amateur operator license.
2. Your valid amateur operator license MUST authorize or qualify you for unsupervised transmitting operations in the ten meter amateur band under your own personal call sign.
3. You must make contact with ten members of 10-10 and submit a log listing all contacts, their 10-10 number, call sign, name, date of contact, and QTH (state/province/country). A new member application and contact log is available in Section 1 on page 31 of this publication.
4. You must remit dues for one or more years full membership. Fee schedule and payment information can be found in Section 2 on page 31 of this publication.

### TYPES OF MEMBERSHIPS

*Please see fee schedule in Section 2 on Page 31*

#### Primary Membership

Primary membership is available with yearly dues, although there is a special incentive available when you pay for three years at once.

#### Family Membership

Family membership consists of a primary member and one or more family members who qualify as a 10-10 member (has made the necessary 10 contacts) and who reside at the same location and postal address. Family memberships run concurrently with that of the primary member. Add \$5 for each additional family member for each year. Only the primary member will receive a copy of the 10-10 News.

#### Life Membership

Life membership is available and may be paid in one lump sum or spread across two or three years. If you wish information on the extended payment plan, please contact the 10-10 Data Manager.

#### Senior Life Membership

Senior life membership is available to anyone who is currently 65 years of age or older. Extended payment plan is not offered with senior life membership.

*Family Life Membership* is no longer available

### MEMBERSHIP RENEWALS

Fill out fee schedule and method of payment in Section 2 on Page 31 and forward as indicated to Data Manager or DX Area Manager. Please make sure you include a copy of your address label with form. If you do not have a copy of your address label (renewing after your membership has lapsed), please include a note with your name, current mailing address, call sign and 10-10 number.

### DATA MANAGER SERVICES

#### Call/Name/Address Changes

All changes are to be sent to the 10-10 Data Manager. Please include your address label (or a copy) with necessary corrections.

#### 10-10 Information Brochure

The 10-10 Information Brochure is 8 pages of everything you would want to know about 10-10. Available for \$2 postpaid along with a return address label.

#### XXIP

XXIP offers 10-10 number, call, name, address, city, state/country, membership status, expiration date, and SK status. XXIP will print a simple address label. XXIP is updated **monthly** and is available on a CD-ROM or by download from the LinGer web site. Order from the Data Manager: CD-ROM for \$10 US Zip Codes or \$13 DX postpaid. For download version e-mail the Data Manager <wa6poz@arrl.net> or go to <www.lingerinc.com> for instructions.

#### AN-TEN-TEN-NAS

AN-TEN-TEN-NAS is a book by L.B. Cebik containing 30 articles and designs for 10 meter antennas from the pages of the 10-10 NEWS. The price has been drastically reduced to \$5.00 USD or free if you renew for 3 years. You must also include the additional \$5 US or \$8 DX for shipping.

#### ALL THE NEWS ON CD-ROM

Every published issue of the 10-10 NEWS on one CD. \$20  
*All profits from the sale of AN-TEN-TEN-NAS and the 10-10 NEWS on CD-ROM go to the 10-10 Scholarship Foundation.*

Payment may be made by Check, Money Order or IRC's (\$1 USD per IRC). VISA and Mastercard are also acceptable. Please provide Card Number, Expiration Date, Name on Card, Phone Number and signature of Cardholder. Mail to:

**Data Manager, 10-10 International Net, Inc.**  
**PMB142**  
**643 N. 98th Street**  
**Omaha, NE 68114-2342**

### SCHOLARSHIP DONATIONS

Donations to the 10-10 Scholarship Foundation are requested from each member on an annual basis to help fund the five \$1000 10-10 scholarships. Your check should be made payable to the 10-10 Scholarship Foundation and sent to:

**Larry Berger, WA2SUH #00407**  
**10-10 Scholarship Manager**  
**9 Nancy Blvd.**  
**Merrick, NY 11566-3119**

*Catch us on the WEB*

**www.ten-ten.org**

**www.10-10.org**

**10-10 INTERNATIONAL NEWS**  
*A QUARTERLY PUBLICATION OF TEN-TEN INTERNATIONAL NET, INC.*

## SECTION 1 - MEMBERSHIP APPLICATION AND CONTACT LOG

NOTE: If this membership application is being used for renewal purposes, please enter your 10-10 number here \_\_\_\_\_

Please print your Name \_\_\_\_\_ Call \_\_\_\_\_

Address \_\_\_\_\_ Year of Birth \_\_\_\_\_

City \_\_\_\_\_ State or Country \_\_\_\_\_

Postal/Zip Code \_\_\_\_\_ E-mail Address \_\_\_\_\_

NOTE: 10-10 NUMBER, CALL, NAME, ADDRESS, MEMBERSHIP STATUS AND E-MAIL ADDRESS IS MADE AVAILABLE TO ALL MEMBERS VIA A MEMBERSHIP ROSTER. ALL OTHER INFORMATION IS KEPT CONFIDENTIAL AND NOT DISCLOSED EXCEPT BY THE ORDER OF A LAWFUL COURT.

**I certify that I meet the membership requirements\* of 10-10** \_\_\_\_\_

\* as listed on Page 30 of this publication

YOUR SIGNATURE \_\_\_\_\_

	10-10 NUMBER	CALL SIGN	OPERATOR'S NAME	DATE OF CONTACT	QTH (State, Province or DX Country)
1					
2					
3					
4					
5					
6					
7					
8					
9					
10					

## SECTION 2 - FEE SCHEDULE AND PAYMENT INFORMATION

10-10 FEE SCHEDULE (eff 2/1/03)	US Zip Codes	DX
New Members	<input type="checkbox"/> \$ 15	<input type="checkbox"/> \$ 18
Renewals (yearly)	<input type="checkbox"/> \$ 15	<input type="checkbox"/> \$ 18
Renewals - 3 year incentive	<input type="checkbox"/> \$ 40	<input type="checkbox"/> \$ 49
Family Membership (yearly)	<input type="checkbox"/> \$ 5	<input type="checkbox"/> \$ 5
Life Membership	<input type="checkbox"/> \$ 500	<input type="checkbox"/> \$ 650
Senior Life	<input type="checkbox"/> \$ 150	<input type="checkbox"/> \$ 200
Scholarship Foundation Donation	<input type="checkbox"/> \$ _____	<input type="checkbox"/> \$ _____
Enter Total		

US Postal Codes and LIFE Memberships mail to  
**Data Manager, Ten-Ten International Net, Inc.**  
PMB142  
643 N. 98th Street  
Omaha, NE 68114-2342 USA  
for information email: wa6poz@arrl.net

DX Applicants mail to:  
**Carol Hugentober, WA8YL #29588**  
DX Area Manager  
4441 Andreas Avenue  
Cincinnati, OH 45211-2622 USA  
for information email: wa8yl@juno.com

### METHOD OF PAYMENT

☐ CHECK

Make all checks payable to 10-10 International Net, Inc. Please list your call and 10-10# on your check.  
Do not send cash. All DX are reminded that money amounts are quoted in US Dollars.  
DX Members please pay by International Postal Money Orders (IRC's are acceptable).

☐ MASTERCARD Account Number (Please include all the numbers on your credit card)

☐ VISA

□□□□ □□□□ □□□□ □□□□

Good Through: □□/□□

Name of Cardholder \_\_\_\_\_ PHONE (required): \_\_\_\_\_

SIGNATURE of Cardholder \_\_\_\_\_ Date: \_\_\_\_\_

*For charges this form may be faxed to 10-10 International Net, Inc. at 402-393-6117*

# 10-10 QSO PARTY COVER SHEET

Callsign \_\_\_\_\_ 10-10# \_\_\_\_\_ Name used in contest \_\_\_\_\_

Name \_\_\_\_\_

Address \_\_\_\_\_

City \_\_\_\_\_

State/Province/Country \_\_\_\_\_ Zip \_\_\_\_\_

your e-mail address (for contest questions only) \_\_\_\_\_

<b>Contest Schedule</b> <table> <tr> <td><b>2006</b></td> <td><u>Contest</u></td> <td><u>Postmark</u></td> </tr> <tr> <td><b>Sprint</b></td> <td><b>Oct 10</b></td> <td><b>Oct 25</b></td> </tr> <tr> <td><b>Fall CW/Dig</b></td> <td><b>Oct 28-29</b></td> <td><b>Nov 13</b></td> </tr> <tr> <td><b>2007</b></td> <td><u>Contest</u></td> <td><u>Postmark</u></td> </tr> <tr> <td><b>Winter Phone</b></td> <td><b>Feb 3-4</b></td> <td><b>Feb 19</b></td> </tr> <tr> <td><b>Mobile Contest</b></td> <td><b>Mar 17</b></td> <td><b>Apr 2</b></td> </tr> <tr> <td><b>Spring CW/Dig</b></td> <td><b>May 5-6</b></td> <td><b>May 21</b></td> </tr> </table> <p><i>contest rules on page 21</i></p>	<b>2006</b>	<u>Contest</u>	<u>Postmark</u>	<b>Sprint</b>	<b>Oct 10</b>	<b>Oct 25</b>	<b>Fall CW/Dig</b>	<b>Oct 28-29</b>	<b>Nov 13</b>	<b>2007</b>	<u>Contest</u>	<u>Postmark</u>	<b>Winter Phone</b>	<b>Feb 3-4</b>	<b>Feb 19</b>	<b>Mobile Contest</b>	<b>Mar 17</b>	<b>Apr 2</b>	<b>Spring CW/Dig</b>	<b>May 5-6</b>	<b>May 21</b>	<b>Check Event</b> <input type="checkbox"/> WINTER PHONE <input type="checkbox"/> MOBILE CONTEST <input type="checkbox"/> SPRING CW/DG <input type="checkbox"/> SUMMER PHONE <input type="checkbox"/> 10-10 SPRINT <input type="checkbox"/> FALL CW/DG	<b>Check Entry Type</b> <input type="checkbox"/> INDIVIDUAL <input type="checkbox"/> QRP 10 watts or less Phone, 5 watts or less CW/Digital <input type="checkbox"/> CLUB Only for those operating as a club station. <i>If operating under a Club call, please list all operators and their 10-10 numbers (if any) on log.</i>	<b>US Call Area (W0-W9) or ARRL DX Country you operated from</b>  <b>Chapter Assignment</b> (not valid for 10-10 Day Sprint)
<b>2006</b>	<u>Contest</u>	<u>Postmark</u>																						
<b>Sprint</b>	<b>Oct 10</b>	<b>Oct 25</b>																						
<b>Fall CW/Dig</b>	<b>Oct 28-29</b>	<b>Nov 13</b>																						
<b>2007</b>	<u>Contest</u>	<u>Postmark</u>																						
<b>Winter Phone</b>	<b>Feb 3-4</b>	<b>Feb 19</b>																						
<b>Mobile Contest</b>	<b>Mar 17</b>	<b>Apr 2</b>																						
<b>Spring CW/Dig</b>	<b>May 5-6</b>	<b>May 21</b>																						
<b>Claimed Score:</b> <table> <tr> <td>Contacts WITH 10-10 number:</td> <td>_____</td> <td>x2 = _____</td> </tr> <tr> <td>Contacts WITHOUT 10-10 number</td> <td>_____</td> <td>x1 = _____</td> </tr> <tr> <td>Total Contacts</td> <td>_____</td> <td>Total Pts _____</td> </tr> </table> <p><i>NOTE: DUE TO MULTIPLIERS, THE MOBILE CONTEST WILL BE SCORED BY THE CONTEST MANAGER</i></p>				Contacts WITH 10-10 number:	_____	x2 = _____	Contacts WITHOUT 10-10 number	_____	x1 = _____	Total Contacts	_____	Total Pts _____												
Contacts WITH 10-10 number:	_____	x2 = _____																						
Contacts WITHOUT 10-10 number	_____	x1 = _____																						
Total Contacts	_____	Total Pts _____																						

**MAILED ENTRIES:** All submissions must contain this cover sheet (or a reasonable facsimile), the log in UTC Date/Time order, and a Dupe Sheet in callsign order or in grid format (if more than 50 contacts).

**Mail to:** Steve Rasmussen NØWY, 312 N 6th Street, Plattsmouth NE 68048, USA

**E-MAIL ENTRIES:** All submissions must be in straight text format and must additionally include all information from this cover sheet either in separate summary or as summary at head of log. Dupe sheet is not required with an e-mail entry.

**E-Mail to:** [tentencontest@alltel.net](mailto:tentencontest@alltel.net)

[www.ten-ten.org](http://www.ten-ten.org)

[www.10-10.org](http://www.10-10.org)

electronic version of this issue at [www.lingerinc.com](http://www.lingerinc.com) - logon Oct2006 - password FallNEWS

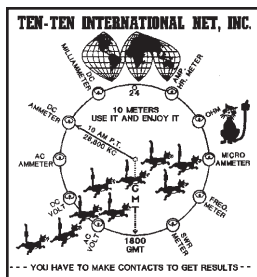
10-10 International Net, Inc.  
PMB 142  
643 N. 98th Street  
Omaha, NE 68114-2342

Address Services Requested

**TIME TO RENEW? EXPIRATION DATE  
IS ON MAILING LABEL BELOW**

**FIRST CLASS**

PRE-SORTED  
FIRST-CLASS MAIL  
U.S. POSTAGE  
PAID  
OMAHA, NE  
PERMIT 1799



OCTOBER 2006  
(AUTUMN)