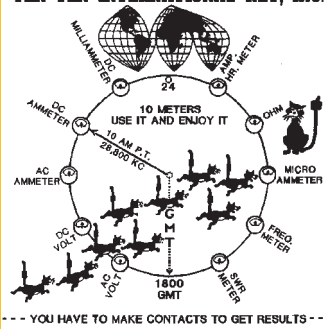


TEN-TEN INTERNATIONAL NET, INC.



# 10-10 INTERNATIONAL NEWS

Volume 45 Issue 2

\$1.50

April 2007 (Spring)

## The Carlisle Hotel - Home for Convention 2007



Inside this Edition: Convention 2007 Update ♦ What's in Omaha?  
Contest results for Winter SSB and Anniversary QSO Party  
Technicians....Know Your Privileges !!! ♦ US Postal Rates Change May 14

## The 10-10 International News

is published four times annually by the TEN-TEN INTERNATIONAL NET, INC. Publication dates are approximately mid January, April, July and October.

Each paid-up member will receive a copy. This is an independent publication. Permission to reprint is hereby granted, providing suitable credit is shown.

News items should be sent to the Editor. Technical articles and information on all 10 meter activities or news are welcome and solicited. All copy submitted must be typed, sent on computer disk or via E-mail. Suitable formats will be provided upon request.

Photographs are encouraged. Black and White or Color are acceptable. Include complete information on the back of each photo. Attach a label or other suitable paper to the back of the photo and write all information on the label, not the photo. If sending digital images, high resolution of a minimum 300 dpi must be used. Please do not send newspaper or digitally printed photos as they cannot be used.

Please mail all articles and photos to:

**EDITOR 10-10 News**  
Steve Rasmussen, NØWY #68684  
312 N 6th Street, Plattsmouth, NE 68048-1302  
Email: n0wy@alltel.net



**10-10 CHAPTER ACTIVITY REPORTS** should be sent to the Chapter Coordinator  
**ADDRESS CHANGES:** Members with US Zip Codes should send address changes to the Data Manager. All other members should send changes to the DX Area Manager.

NOTE: 10-10 IS NOT RESPONSIBLE FOR POSTAL SERVICE DIFFICULTIES

**DEADLINE FOR NEXT ISSUE: 1 Jun 2007**



Member  
AMATEUR RADIO NEWS SERVICE

# OFFICERS, DIRECTORS AND NET OFFICIALS

*Award Managers listed on page 24 - Membership Information listed on pages 30-31*

### President

Gerry Gross, WA6POZ #21274  
16046 Orchard Cir., Omaha, NE 68135-1068  
(402) 895-7367 .....wa6poz@arri.net

### Vice President

Larry Berger, WA2SUH #00407  
9 Nancy Blvd., Merrick, NY 11566-3119  
(516) 223-4611 .....wa2suh@aol.com

### Secretary

Jon Goering, N7AZ #43483  
648 N Thunderbird Drive, Apache Junction, AZ 85220  
(unlisted phone) .....nj7i@mchsi.com

### Treasurer

Keith Schlottman, KR7RK #63324  
9581 E. Calle Cascada, Tucson, AZ 85715-5819  
(520) 290-5883 .....keith@schlottmanpcpa.com

### Directors

Robert L Farrow, N6OPR #45715  
14814 Gagely Dr, La Mirada, CA 90638-2116  
(562) 944-9040 .....N6OPR@msn.com

Ken Harmon, K1IEQ #31363  
471 Turnpike Rd, Mason, NH 03048-4722  
(603) 878-1887 .....K1IEQ@juno.com

Rob Ireland, VE9KM #69811  
31 St James Street, Sackville, NB E4L 4L7 Canada  
(506) 536-1038 .....rireland@mta.ca

Leslie Johnson, WA4EEZ #15675  
6601 Bougainville Ave S, St Petersburg, FL 33707-2213  
(727) 347-7422 .....wa4eez@arri.net

Brad Kimble, KØDBK #55192  
3855 66th St. E, Inver Grove Hgts, MN 55076-2222  
(651) 450-1173 .....k0dbk@comcast.net

Jack Moore, K5CC #50708  
371 Ridge Creek Lane, Bulverde, TX 78163-2871  
(830) 885-2194 .....k5cc@gvvc.com

Steve Rasmussen, NØWY #68684  
312 N. 6th Street, Plattsmouth, NE 68048-1302  
(402) 296-4434 .....n0wy@alltel.net

Cliff Taylor, K5FBS #48461  
22707 Red Mountain Dr., Elmendorf, TX 78112-6034  
(210) 621-2652 .....catk5fbs@aol.com

### Certificate Manager

Ruth Bartholomew, NØKDB #48715  
10030 Plum Road, Sullivan, MO 63080-6717  
(573) 468-2898 or (314) 479-5474 .....n0kdb@fidnet.com

### Chapter Coordinator

Cliff Taylor, K5FBS #48461  
22707 Red Mountain Dr., Elmendorf, TX 78112-6034  
(210) 621-2652 .....catk5fbs@aol.com

### Contest Manager

Steve Rasmussen, NØWY #68684  
312 N 6th Street, Plattsmouth, NE 68048-1302  
(402) 296-4434 .....n0wy@alltel.net

### Data Manager / Supplies

Data Manager, 10-10 International Net., Inc.  
PMB 142, 643 N 98th Street, Omaha, NE 68114-2342  
(402) 895-7367 .....wa6poz@arri.net

### Editor 10-10 International News

Steve Rasmussen, NØWY #68684  
312 N 6th Street, Plattsmouth, NE 68048-1302  
(402) 296-4434 .....n0wy@alltel.net

### General Counsel

Dave Splitt, KE3VV #69831  
6111 Utah Avenue NW, Washington, DC 20015-2461  
.....davidsplitt@erols.com

### Net Manager

Robert L Farrow, N6OPR #45715  
14814 Gagely Dr, La Mirada, CA 90638-2116  
(562) 944-9040 .....N6OPR@msn.com

### QSL Bureau Manager

Bob Peschka K7QXG #05956  
592 SE Cypress Ave., Dallas, OR 97338-2932  
(503) 831-1455 .....k7qyg@dsl-only.net

### Scholarship Manager

Larry Berger, WA2SUH #00407  
9 Nancy Blvd., Merrick, NY 11566-3119  
(516) 223-4611 .....wa2suh@aol.com

### SK Manager

Ruth Bartholomew, NØKDB #48715  
10030 Plum Road, Sullivan, MO 63080-6717  
(573) 468-2898 or (314) 479-5474 .....n0kdb@fidnet.com

### W6OI Station Trustee

Jack Moore, K5CC #50708  
371 Ridge Creek Lane, Bulverde, TX 78163  
(830) 885-2194 .....k5cc@arri.net

### Webmaster

Darwin Piatt, W9HZC #73090  
10532 Larimore Circle, Omaha, NE 68134  
(402) 991-0412 .....dw-piatt@cox.net



**Steve Rasmussen NØWY #68684**  
**Editor 10-10 NEWS**



I was going to write about all the changes that have happened since the last issue of the NEWS, but the articles in this edition pretty much handled it. As a VE Liaison for the ARRL, I have been very busy administering exams in the Omaha area. We have had a 500% increase in business. With this will come the responsibility for all of us to nurture these new people into the hobby and teach them what they can and can't do - case in point the article on page 9.

In any case - on to the convention! I was given this anonymous poem today and just had to get it in the NEWS somewhere.

### Nebraska, The Poem

Smack in the middle of our great nation  
 Is a state that requires some explanation.  
 To east and west coasters who'll come right out and ask ya  
 "Is there anything of interest in the State of Nebraska?"

It's true we don't have mountains all decked out in snow,  
 But we do have the world's biggest live chicken show.  
 We're the makers of Spam. We invented Kool-Aid,  
 And this is where the first Rueben sandwich was made.

Our insect, the Honeybee. Our bird, the Meadowlark.  
 The strobe light, our creation, works best in the dark.  
 Governmentally speaking, we're a freak of nature,  
 Since we have the only one-house legislature.

On Arbor Day, when you plant a tree,  
 Remember that is started in Nebraska City.  
 We were once called a desert, but that name didn't take,  
 Since we have the country's largest underground lake.

We have the world's largest forest planted by hand,  
 and more miles of rivers than any state in the land.  
 The College World Series calls Omaha "home,"  
 And yes, this is where the buffalo used to roam.

We were the first state in the nation to finish our Interstate section,  
 And the first to run two women in the gubernatorial election.  
 We invented 9-1-1 emergency communication,  
 And we're the number one producer of center pivot irrigation.

Our woolly mammoth fossil is the largest ever found,  
 And our monumental "Carhenge" is certain to abound.  
 We have several museums that could be called odd,  
 Dedicated to Chevy's, fur trading, roller skates and sod.

In Blue Hill, Nebraska, no woman wearing a hat  
 Can eat onions in public. Imagine that!  
 We built the largest porch swing and indoor rain forest,  
 And anyone who visits is sure to adore us.

So pack up the kiddies, the pets and the wife,  
 And see why Nebraska is called  
 "THE GOOD LIFE"

(Oh gosh - it doesn't even once mention football? OR that the yellow color of the school buses originated in Franklin Ne.)

## CONTENTS

An-Ten-Ten-nas .....	10
Award Listings .....	24
Award Managers .....	24
Board Meeting 2007.....	9
Chapter Coordinators Column .....	12
Christmas Update.....	18
Contest Cover Sheet .....	32
Contest Results - Anniversary .....	25
Contest Results - Winter SSB .....	26
Contest Rules .....	28
Convention 2007.....	6
Convention 2009.....	8
DX Area Manager.....	9
DX News .....	14
Hill Country Picnic - 2007 .....	21
Know your Privileges!.....	9
Life Members.....	21
Membership Application.....	31
Membership Information and Services .....	30
Net Guide.....	29
Net News and Quarterly Net Report .....	22
Officers, Directors and Net Officials.....	2
Postal Increase May 14 .....	8
President's Report.....	4
Scholarship Application Information.....	21
Scholarship Foundation Supporters.....	20
Silent Keys .....	23
VP Resigns .....	5
W6OI On The Air .....	21
W6OI Special Event .....	25
What's in the Omaha area? .....	16

*and much more*

## 10-10 NET CONTROL STATIONS

**ALL NETS BEGIN AT 1800Z**

<b>Monday (28.380) .....</b>	<b>Dick, K6PZE #01341</b>
<b>Monday (28.800).....</b>	<b>Doc, WB6OJB #70675</b>
<b>Tuesday (28.380).....</b>	<b>Brian, KC7OC #67668</b>
<b>Tuesday (28.800) .....</b>	<b>Bob, K4QHH #26040</b>
<b>Wednesday (28.380).....</b>	<b>Chris, N7PVL #58018</b>
<b>Wednesday (28.800).....</b>	<b>Louise, N6ELK #36654</b>
<b>Thursday (28.380).....</b>	<b>Bob, N6OPR #45715</b>
<b>Thursday (28.800) .....</b>	<b>Robert, KQ4PK #63201</b>
<b>Friday (28.380) .....</b>	<b>Bill, KB9MJ #22313</b>
<b>Friday (28.800) .....</b>	<b>Tom, KA9EKG #70731</b>
<b>Saturday (28.380) .....</b>	<b>Bob, W2BOC #71096</b>
<b>Saturday (28.800) .....</b>	<b>Earl, KS4XI #70679</b>
<b>Sunday.....</b>	<b>"NEVER ON SUNDAY"</b>

**Alternate Net Controller .....**John, NS2M #72143  
**Alternate Net Controller .....**Dan, KC8IM #31959





*from the office of the*  
**PRESIDENT**  
**10-10**  
**International**

**Gerry Gross**  
**WA6POZ #21274**

When you read this article, the new FCC rules removing the code requirement from testing and the granting of limited HF operations to Techs would have been in effect for about 6 weeks. It is hard to guess the immediate impact but with the, hopefully improving sun spot cycle, I am sure that we will find a lot of new hams on 10 meters. It is up to us to welcome them and assist them in becoming good HF operators.

Does your local radio club have a 10-10 number? If not, why not? With the recent changes to the FCC rules, how about encouraging your local clubs to start a 10 meter net? The net could be added to the 10-10 Net Guide and would encourage more Techs to get on and use 10 meters resulting in more 10-10 active members.

As with any organization change is constant. Ten-Ten is no different. In late January I received a letter from Mike Elliott K7BOI #54625 resigning as Vice President. The letter is reproduced elsewhere in this NEWS. Mike's resignation was not unexpected, as we had been discussing his resignation during the last quarter of 2006. I tried many times to talk him out of it but also knew about the time he is spending traveling for his employer. Most times when we talked Mike was in numerous different cities, on the road or in airports. Mike did an outstanding job stepping in for Chuck, after Chuck's stroke during the Board meeting in Phoenix AZ in June 2005. Mike served previously as a Director and Information Manager and his dedication to 10-10 will be missed.

I am pleased to announce that Larry Berger WA2SUH #00407 has accepted the position of Vice President. Larry will serve for the remaining two years of the current term. Larry has been on the Board since October 1997 and is in charge of managing fund raising activities for the 10-10 Scholarship fund. Larry also serves as the liaison with the Foundation for Amateur Radio, the group who administers the 10-10 Scholarships. Larry's involvement in Ten-Ten began over 30 years ago. He served as the Second Area Manager from 1979 until the centralization of those duties in 1997. Larry was a net control station for his

local chapter of Ten-Ten, the Long Island Amateur Radio Society (LIARS), and participates in the Ten-Ten QSO parties having taken first in the 2nd district more than once.

With Larry's move to Vice President, a Director's vacancy was created. Leslie Johnson WA4EEZ #15675 has accepted the appointment to that position and will serve for the remaining two years of that term. Leslie first joined Ten-Ten in 1977 and was active for a few years before succumbing to outside pressures, (parenting and work). Leslie became involved again in 2000 and since then has been active in the various awards programs and in the QSO parties. Since 2005 Leslie has been a member of the Contest Advisory Committee. Leslie is the President of the St Petersburg (Florida) Amateur Radio Club W4GAC #72039, (the first YL President of the club).

Did you know that 10-10 has material available for hamfests and has a prepared program for club meetings? For the month of February, 10-10 supplied material for three club meetings and two hamfests. For both hamfests and club meetings 10-10 will supply copies of the 10-10 NEWS and for the club meeting, a PowerPoint presentation to present the many facets of our organization. Requests for material need to be made at least three months in advance. A limited number of extra copies of the 10-10 NEWS are printed each quarter and are supplied on a first come-first served basis. If we know in sufficient time that additional copies of the 10-10 NEWS will be needed, then more can be printed. Send me an email detailing the type of event, date and the approximate attendance.

With the arrival of spring it's again time to travel and visit with other 10-10'ers. I am looking forward to being in Germany for the New Waterkant meeting at the end of April. I will be at Dayton with a booth and a forum. Stop by booth 326, located in the room with the hardwood floors just east of forum rooms. Say hi, sign the log, pay your dues, buy a pin or chat with me and the others manning the booth. Visiting in the booth this year with me will be Bob N6OPR #45715 Director and Dick K6PZE #01341 Net Control. The most current information is that the Ten-Ten forum will be in room 5 at 4:00 pm on Friday, but it is best to stop at the booth or determine from the program the time and place. After Dayton I'm headed to Tallahassee FL for a visit with my granddaughter and her parents and then over to San Antonio for the Hill Country picnic on May 27th at Jack's K5CC #50708 home. This is a yearly event and always a lot of fun to get together

with the 10-10 members from the San Antonio area and any other visitor from around the US. To finish off my spring travel plans, Steve NOWY #68684 and I will be down in Plano TX for Ham-Com on June 8-9. We are planning for both a booth and a forum but at press time we don't know the booth location or time/place of the forum. Look for us and say hi.

One of the projects I started since becoming President was to review the 10-10 Operations Manual. I have had a copy for years but must admit I have never read it cover to cover. The first thing I discovered was it is a rather large document, 173 pages, and that it contained a lot of material that is available in other places. It was placed in the Operations manual so all material was in one convenient location. While this sounds good it really means that updating takes twice as long. Another item I discovered was that many items are duplicated, in the manual in multiple locations. Rather than have one place refer to the second or third, the text was just duplicated. Again updating, if it even occurs, takes twice as long. And when differences are found the question is raised, which is correct? More time wasted. However, on the positive side, the manual is complete and it should be used as a source to find out how the various programs that 10-10 provides are operated.

The second project I began and will hopefully complete by the time of this publication, is providing 10-10 badges to all those who volunteer their time and effort for 10-10. It is an approved policy of 10-10 to supply these badges but through the years many have not been recognized nor received their badge.

I have decided to add a new section to the Manual, and for that I need your help. The first section contains a brief history of the beginning of 10-10. This was reproduced from the 10-10 Information Manual that anyone can obtain by downloading from the web, <[www.lingerinc.com/Forms-f/Forms.htm](http://www.lingerinc.com/Forms-f/Forms.htm)>. I want to follow that with a listing of 10-10 Officers from the very beginning to today. Unfortunately, there are little or no records prior to 1975. There are still many of you with low 10-10 numbers around, who may be able to supply this important part of 10-10 history. Write, call or send me an email if you have any information that helps fill the gap.

As I write this there is still snow on the ground and more is expected. But I know Spring is just a month away and I am hoping the days will pass quickly and the temperature will rise. I want to visit with as many members in the coming months as is possible.

**Mike Elliott, K7BOI #54625,  
Vice President of 10-10  
resigns from Board**

(reprint of letter from Mike Elliott)

January 18, 2007

Gerry,

As I have discussed with both you and Chuck over the last few months, my job responsibilities have changed significantly. This change has brought about a tremendous increase in my travel commitment and working hours. In fact, it was this potential for increased responsibilities that made me consider the question of running for re-election as Vice President in 2004. My conclusion at that time was that I could make the time commitment to satisfy both work and my 10-10 responsibilities. That was an error on my part.

Bottom line is that my time is so limited that I can no longer satisfy the requirements of the role of 10-10 Vice President. Also, I find that I will not even be able to attend this year's Board meeting and convention in Omaha. Therefore, please consider this letter as my resignation from the Board and Vice President effective February 1, 2007.

It has been my pleasure to serve 10-10 in varying capacities through these many years. The experience of serving as Information Manager, Director and then Vice President is one that I will forever treasure. 10-10 is a great organization with a great mission and the people associated with the organization are first rate!

I sincerely wish you all the best. I am sure that the Board will continue to further the cause of 10-10 through your collective efforts in the areas of member services, education and fellowship. It is through those efforts that the strong bond among 10-10 members exists. Best wishes.

Sincerely,  
Michael P. Elliott. K7BOI

*Thanks for all the hard work Mike.  
It was definitely appreciated!!!*

---

# Convention 2007 - Welcome to Omaha!

---

## Convention Omaha Update

It doesn't seem like three months have passed since the last issue of the NEWS went to press. Since then most of winter has come and gone, hopefully the snow and cold as well. The convention committee is putting the finishing touches on the convention, updating the web site with the latest registrations, and putting their collective minds together to select a list of prizes that will please all the attendees. The committee wants to ensure a successful convention. Coordination with the hotel to resolve any possible reservation problems is at the top of the list.

During the winter there were some unexpected changes with the hotel. They dropped the Days Inn franchise and became an independent concern. The new name is the Hotel Carlisle. The result of this change is a new web address, [www.carlislehotelomaha.com](http://www.carlislehotelomaha.com). Check it out! A new picture of the hotel, taken during the winter, seems to look like the hotel needs painting. It is really snow. I wonder if the management even noticed! If you are driving an RV to the convention and do not need a hook-up, parking on the hotel parking lot is permissible. The closest campsites are approximately 20-30 minutes away. If you plan on driving an RV please let us know in advance so that we assist with your accommodations either at the hotel or a camp site. The phone numbers and room rates have not changed; (402) 331-8220 or (800) 536-6342, \$55 for a King and \$60 for two double beds, plus all applicable taxes.

Another unexpected change was the cancellation of the transportation, and food and casino coupon for the Ameristar casino on Friday evening. If sufficient numbers sign up for this event we will still make arrangements for the transportation to and from a casino.

The Village Inn, a local restaurant within walking distance of the hotel, has agreed to give 10-10 members and guests attending the convention a 10% discount for all meals while you stay in Omaha. An added bonus is a free piece of their delicious pie with your purchase of a dinner.

When the prizes are finalized and acquired, a list of those items will be added to the web pages. The convention committee has decided that up to three

radios will be awarded. One of the radios will be used as the early registration prize. The others are to be given away at the banquet. The committee would love to be able to give away an IC-756 PRO III or FT-2000 but more than likely it will be along the lines of an IC-706 MK II-G, IC-718, or FT-857D or some combinations of these radios. Other prizes will be one or two 10 meter antennas that can be used either for fixed, portable or for mobile use and one or two digital controllers. In addition to the major prizes there will be an array of clocks, logging programs, CD based callbooks, etc. All prizes when acquired will be listed on the web. Those chapters or individuals wishing to donate a prize please let us know so that we can acknowledge those prizes on the convention web.

A link from the 10-10 web site [www.ten-ten.org](http://www.ten-ten.org) to the convention web pages has been made. You can go directly to the convention web by accessing this link [www.lingerinc/conv2007](http://www.lingerinc/conv2007). On the web pages you will find a list of those who have registered, chapter requesting tables, the most current schedule of events, tours and links to sites around Omaha, and a reservation form. The on-line reservation form will be taken down between April 22nd and May 3rd and again from May 17th until May 30th. Remember that the pre-registration cut-off date is June 15, 2007, (postmark date).

At least one station will be on the air during the convention, look for W6OI/0 on 28.400 MHz. or 28.120.15 MHz. Attendees who do not have a 10-10 number attending the convention will be able to qualify during the convention.

Now that spring is here and your summer plans are being finalized, hopefully the 10-10 convention is one of your stops. We look forward to seeing your smiling faces in Omaha this summer.

Address questions to Gerry WA6POZ at [WA6POZ@arrl.net](mailto:WA6POZ@arrl.net) or Steve at [NOWY@alltel.net](mailto:NOWY@alltel.net)



This form maybe photocopied. It is also available at the 10-10 web



**Ten-Ten International Net, Inc.**  
**2007 Convention Registration Form**  
**August 10 - August 12, 2007**  
**Days Hotel Carlisle**  
**10909 M St Omaha NE 68137**



Name \_\_\_\_\_ Call \_\_\_\_\_ 10-10# \_\_\_\_\_  
 Address \_\_\_\_\_  
 City \_\_\_\_\_ State or Country \_\_\_\_\_ ZIP \_\_\_\_\_  
 E-Mail Address \_\_\_\_\_ Phone \_\_\_\_\_  
 Additional Attendee \_\_\_\_\_ Relation \_\_\_\_\_  
 Additional Attendee \_\_\_\_\_ Relation \_\_\_\_\_  
 Number of Registrations \_\_\_\_\_ @ \$15 each \$ \_\_\_\_\_

**Friday, August 10**

Boys Town/Old Market (lunch on your own) # Tickets \_\_\_\_\_ @ \$15 each \_\_\_\_\_  
 Casino Gaming trip Yes \_\_\_\_\_ No \_\_\_\_\_

**Saturday, August 11**

River City Star lunch/cruise # Tickets \_\_\_\_\_ @ \$30 each \_\_\_\_\_  
 Banquet - Rib Eye # Tickets \_\_\_\_\_ @ \$30 each \_\_\_\_\_  
 Banquet - Pork Chop # Tickets \_\_\_\_\_ @ \$25 each \_\_\_\_\_  
 Banquet - Chicken # Tickets \_\_\_\_\_ @ \$25 each \_\_\_\_\_

**Sunday, August 12**

Breakfast buffet # Tickets \_\_\_\_\_ @ \$12.50 each \_\_\_\_\_

**Chapter Tables**

# Tables \_\_\_\_\_ @ \$10.00 each \_\_\_\_\_  
 List Chapter Name(s) \_\_\_\_\_  
 Do you require electrical connection? \_\_\_\_\_

**Prize Tickets**

Single ticket # Tickets \_\_\_\_\_ @ \$1 each \_\_\_\_\_  
 12 tickets # Tickets \_\_\_\_\_ @ \$10 each \_\_\_\_\_

**Total Amount Enclosed** \_\_\_\_\_

**Pre-Registration cut off date is June 15, 2007 (Postmark Date)**

If staying at the Days Carlisle, enter your arrival date \_\_\_\_\_ Departure Date \_\_\_\_\_

**Method of payment**

Check - Make checks payable to "10-10 International Net" mail registration form and check to  
**10-10 International Net, 643 N 98th St #142 Omaha NE 68114-2342**

Charge - MasterCard ☐ Visa ☐

□□□□ □□□□ □□□□ □□□□

good through □□/□□

Name of Cardholder \_\_\_\_\_ Phone \_\_\_\_\_  
 Signature of Cardholder \_\_\_\_\_ Date \_\_\_\_\_

**Hotel Reservations - call 800-526-6242 or 402-331-8220**  
**Mention "10-10 International Net" for convention rates**  
**1 King bed \$55+tax, 2 Double beds \$60+tax**



## 2009 CONVENTION SITE NEEDED

Well...somebody pulled a rabbit out of the hat and saved us for the 1010 convention for 2007. It will be in Omaha, Nebraska in Aug....9 to 12 (looks good at this time). Hopefully we will have a great number of us that will be showing up for this one because of the band conditions we have had for so long. I can't speak for all but I sure have missed being able to turn on the radio and hear a few conversations going on. We should really put on a big push to get lots of ten-tenner's there. Unfortunately there are a lot of members out there that are not paid up on dues and are not getting the word about the convention so it's up to us to get the word out. The location, being in the center of the country is where a lot of people suggested it be for all to be able to get to. So let's not disappoint them. **SPREAD THE WORD!**

As a new director I was asked to tackle the responsibilities of planning and public relations. The first priority is determining a site for the 2009 convention. This needs to be discussed and approved at the board meeting in August. There are quite a lot of ten-tenners out there that are more than qualified to host a convention. I promise you, that you will not be alone to do the job and with a few hints from the planning committee, a very successful time can and will be had. If you think you would like to find out more on the subject please send me an e-mail.

**K1IEQ@JUNO.COM**

All of our correspondence will be kept to just us and I will keep your desires to myself until you feel comfortable to take on this Venture. Just ask yourself a few questions.

- 1.- Why do I go to a convention?  
Or --- Why haven't I gone to a convention?
- 2.- What do I get out of a convention?
- 3.- What have been my gripes in the past about the convention?
- 4.- What would I like to see happen at a convention?
- 5.- What could I do to make a better convention?
- 6.- What do I have to do to run a convention?

## HI PAUL !

Paul WN4AMO #73825 had a nice visit at the home of Robert KQ4PK #63201 on February 25th. Robert took him out to Pete Jones' BBQ for dinner. They checked the radio for propagation and the only band they could find anyone on was 20 meters.



Paul also helped Robert with his MixW2 program and now it is singing along very nicely. Paul also gave Robert pointers on how to watch more than one signal at a time.

## US Postal Increase effective May 14

If you haven't heard, or are unaware, the postal rates in the US will raise on May 14th. Also to be introduced is a 'forever' stamp which is to be sold in 'reasonable' limited quantities for First Class one ounce mail and for which will be good even if the cost of postage goes up in the future. There has been no mention of any increase in the cost of mailing US to foreign countries. However, on Wednesday December 20, 2006 the Federal Register, Vol 71 num 244 did show some proposed changes to International mailings. Changes included the cost of IRC rising to \$2.00, and rates for one once airmail letters to Canada and Mexico to be \$.69 and all other countries to be \$.90. No approval or implementation dates have been given for these increases.

Besides the normal postage increase that 10-10 will pay additional changes are also being made to for the bulk mail fee that 10-10 pays to mail the 10-10 NEWS. The yearly fee will increase to \$175, payable in December 2007. Also starting in August 2007, new rules go into effect that will penalize mailers if the address is not deliverable as addressed. What this means to 10-10, today 10-10 averages \$65 per quarter on returned mail cost, after August 1st the amount will be greater if the NEWS is returned. Mailing lists for the 10-10 NEWS are prepared the last day of each quarter, let us know before the mailing if you are moving and help save your money.

For the complete listing of all changes refer to the following web site <<http://www.usps.com/ratecase/>>.

Some rate changes coming:

First Class	one oz letter . . . . .	\$ .41
	two oz letter (.17 for extra ounce) .	\$ .58
Post Card Priority Mail	. . . . .	\$ .26
	one pound . . . . .	\$ 4.60
	5 lb (local) . . . . .	\$ 6.15
	5 lb 2000+ miles . . . . .	\$ 15.85
	Flat rate box . . . . .	\$ 9.15
Express Mail	8 oz. . . . .	\$ 15.85
	2 lb . . . . .	\$ 21.40



---

## KNOW YOUR PRIVILEGES!

### MISCONCEPTIONS ABOUND REGARDING TECH HF PRIVILEGES

Some Technician licensees who gained new privileges February 23 remain unaware or uninformed as to what they may and may not do on the HF bands, says ARRL Regulatory Information Specialist Dan Henderson, N1ND. In addition to all Amateur Radio operating privileges above 50 MHz, Technicians who never passed a Morse code test now have CW privileges on certain segments of 80, 40 and 15 meters plus CW, RTTY, data and SSB privileges on certain segments of 10 meters. And that's it. "Know your privileges <<http://www.arrl.org/FandES/field/regulations/bands.html>>," Henderson advises all Amateur Radio licensees. He says some Technicians apparently believe their new HF phone privileges go far beyond what they really have.

"Technicians have no phone privileges on any HF band other than 10 meters, period!" Henderson emphasizes. "That's the bottom line. If you want to operate phone on the other HF bands, you'll have to upgrade to General or Amateur Extra class."

A lot of Technician licensees appear to have done just that, according to statistics compiled by Joe Speroni, AH0A <<http://ah0a.org/FCC/Licenses.html>>. So far in March, the number of General class licensees is up by more than 2700 over the February figure to 134,173, after hitting a 5-year low of just under 131,000 in January. The number of Technicians dropped by 4655 in the same period to 318,838. Speroni notes, however, that his mid-month figures tend to underestimate actual totals.

Most Technician license holders face a learning curve to take advantage of their new CW privileges on HF, but they no longer have to pass a Morse code examination. Technicians also may use their new HF privileges without having to apply for them first. No other license class automatically acquired additional privileges February 23. The "omnibus" rule changes effective last December 15 did not give Technician licensees without Morse code credit any additional privileges either.

Henderson further warns new Techs not to extrapolate additional phone privileges by misconstruing the FCC Part 97 rules to mean something they don't.

"Calls I've been getting lately indicate that some misinformed individuals believe Technicians may operate 'digital voice' on 80, 40 and 15, where they have only CW privileges," he says. "Not true. Digital voice is really digitized voice, and it's not permitted in non-phone band segments."

Henderson reiterates that Technicians do not have FM voice privileges on 10 meters -- or on any other HF band, for that matter.

The HF privileges all Technicians now have are equivalent to those that Novice licensees enjoy, Henderson notes. "This also means the 200 W maximum power limit still applies, regardless of where you operate in the HF bands," he says. Technicians may operate at up to the legal limit on VHF and UHF, however.

On 10 meters, Technician and Novice licensees have CW, RTTY and data privileges from 28.000 to 28.300 MHz, and CW and SSB privileges from 28.300 to 28.500 MHz. "We're sorry that the sunspots aren't favoring 10 meters at

this point in the sunspot cycle, but they will in a few years," Henderson allowed.

In addition, Technicians and Novices have CW -- and only CW -- privileges on from 3.525 to 3.600 MHz on 80 meters, from 7.025 to 7.125 MHz on 40 meters and 21.025 to 21.200 MHz on 15 meters. Henderson believes at least some of the confusion may have originated with a few brand-new or inexperienced Technician licensees who heard that the FCC deleted the Morse code requirement to obtain an Amateur Radio license, but paid little attention to the fine print.

"And we all know the devil's in the details," Henderson says. "Remember, the FCC requires you to know where you may and may not operate and with what modes. Stick to the privileges your license allows or risk hearing from the FCC."

ARRL Letter Vol. 26 No. 12

---

## 2007 Board Meeting

10-10's annual Board of Directors meeting will be held in Omaha, NE on August 9, 2006, the day previous to the Convention. The Board gathers once each year to address topics of importance to the organization. As always, any interested 10-10 member is encouraged to attend the meeting. If you have any issue that you would like the Board to consider please contact the President or one of the other Board members to find out how to submit your issue or proposal. All input is appreciated! At this point there doesn't seem to be a long list of items on the agenda but a few of the items that are always included are the 10-10 Scholarship Fund and the 2008 budget. An advance copy of the meeting agenda will be posted on the 10-10 Internet web site ([www.ten-ten.org](http://www.ten-ten.org)) at least 30 days prior to the Board meeting date. Please provide your input for Board consideration.

---

## DX AREA MANAGER

Due to an accident the DX Area Manager, Carol Hugentober, WA8YL, #29588 has asked to be relieved of the duties of the DX Area Manager. She expects to be in physical therapy for an extended period. Since the volume of mail to the DX Area Manager is low, the position is being consolidated into the Data Managers responsibilities. Carol has been a 10-10 volunteer for many years. She was the 8th call area district manager until those positions were consolidated. Upon the passing of her husband, John, N8FU, #16154, Carol assumed John's activities as the DX Area Manager. With Carol stepping down, a piece of 10-10 history is coming to a close. I'm sure all members wish Carol a speedy recovery.

# An-Ten-Ten-nas

**INFORMATION  
to help you decide  
on the best  
antenna for you!**

**L. B. Cebik  
W4RNL #41159**



In each issue of the News, we shall try to clarify a significant cluster of ideas used in antenna work. Our object is to help you make the best decisions about the antennas you buy or build without imposing our own prejudices on you. The more you understand, the better your choices will be.

## No. 55: What to Expect from Multi-Band Yagis

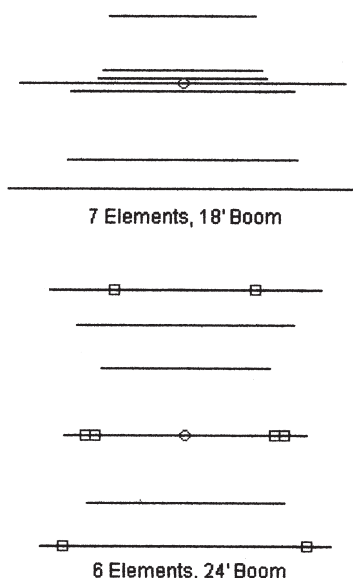
In the last episode, we examined some of the physical and electrical factors that go into setting up a Yagi. For that exercise, we reviewed a large sampling of monoband beam designs for 10 meters. Our goal was to set up some reasonable expectations of Yagi antennas considering both the boom length and the element population. We discovered a number of factors that might influence our decision about which beam to purchase. The factors included the weight, the wind-survival rating, the gain and other pattern features, and the operating bandwidth of the antenna.

However, many 10-meter operators wish occasionally to use other bands. Hence, they are more interested in a multi-band Yagi, specifically, a beam covering 20, 15, and 10 meters. The effort to develop high-performance multi-band Yagis is many decades old. It has made very great strides since the advent of computer-aided antenna design. Nevertheless, the market today is filled with both modern and older designs. Fig. 1 compares in outline both types of tri-band Yagis.

At the top is a more modern design. It uses 7 elements total, but each individual element has primary utility on only 1 of the 3 bands. The element lengths are clues to the band of primary use. This particular beam uses a master-slave driver assembly, as indicated by the 2 elements very close to the long (20-meter) driver with the circle indicating the feedpoint connection. The lower tri-band beam is a hybrid. It uses some dedicated elements (without square

Outlines of 2 Sample  
TriBand Yagi Beams

Fig. 1



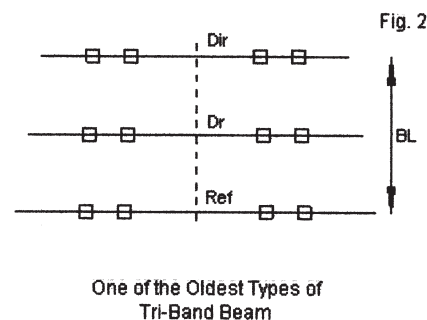
boxes). Other elements serve more than one band, as indicated by the square boxes that mark the location of traps. Advertising hype tends to either oversell the losses of traps or to remain silent on their losses, depending on which kind of tri-band Yagi we are trying to sell. Therefore, let's pay a little closer attention to tri-band Yagi design to see if we can develop some reasonable expectations of these antennas.

1. The Earliest Tri-Band Yagis: Fig. 2 shows in outline form the general configuration of tri-band Yagis in the 1970s. These relatively early beams emerged from simple experimentation until the maker decided that the design was good enough to sell. The outline shows us two major factors to consider.

First, we find only 3 elements. From our exploration of monoband beams, we might conclude (validly) that the boom length and the element spacing are optimal on only 1 of the 3 bands--at most. Therefore, on the other bands, performance is likely to be lower than on the most optimal band. In many designs, the goal on the non-optimal bands was first to produce an acceptable feedpoint impedance for the coax feedline and second to develop at least a fair front-to-back ratio. Users who graduated from dipoles and doublets to the beam often mistook the reduction of rearward QRM for forward gain--and they still do today. Both factors are important, but they are not the same.

Second, we find traps in each element. Each trap (or equivalent device) terminates a higher-band length. On lower bands, it functions as a loading reactance. On 10 meters, the beam has no loading within the lengths for that band. However, the spacing is likely too wide for optimum 3-element 10-meter performance. On 15, the 10-meter traps load and shorten each element relative to its full trap-less length, but the spacing is likely closer to optimal. On 20, we have 2 loads per element side in each element. So the 20-meter elements are well below full size. In addition, the spacing is likely too short for full performance. Hence, in these designs, 20-meter performance tended to suffer most. (Incidentally, some tri-band designs appeared to have only one trap canister on each side of each element. However, each canister contained two traps, and the outer surface of the trap enclosure served as the intervening element section.)

Traps are not the only way to terminate an element at some specified frequency. Fig. 3 shows the schematic of a trap and its equivalent linear-loading substitute. Ordinarily, we tune a trap to a frequency at or just below the lowest frequency on the band that it terminates. So



One of the Oldest Types of  
Tri-Band Beam

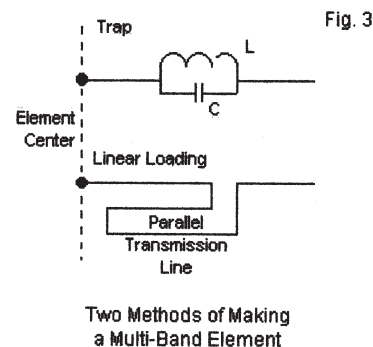


Fig. 3

we might use 27.8 MHz as the resonant frequency of a trap for 10 meters. Now consider the linear load. It is a section of shorted transmission line that the designer has folded back toward the center of the element. Ideally, at about 27.8 MHz, the line would be electrically  $\frac{1}{4}$ -wavelength long, forming a very high impedance, just like an ideal trap. Like the trap, at lower frequencies, the linear load was an inductive reactance that allowed us to shorten the overall length of the element on the lower frequency. The earliest linear-loaded element designers claimed that they had no losses and hence formed ideal ways to terminate or shorten an element. Unfortunately, those claims have not proven to be correct. The fold-back construction is one reason for less than perfect performance. The 2 lines interact with the apparent main element, so the linear-loading section rarely shows perfect transmission-line currents that are equal in magnitude and opposite in phase.

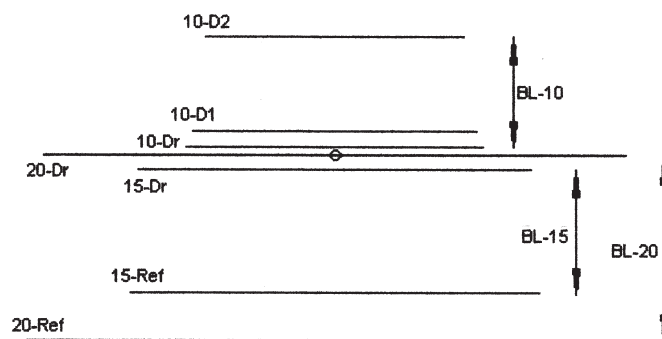
The Q of a standard trap ranges up to about 250--a good value but not a perfect value. Each pair of traps in an element--when they function as loading devices on lower frequencies--tends to reduce the element's gain by about 0.5 dB. We cannot eliminate the loss with an ideal trap--such as a perfect linear load--because part of the gain loss comes from the shortening of the element. Hence, even ideal traps, of which there are none, would create some gain loss. (Unfortunately, many trap-haters attribute all of the gain loss to power dissipation, which is not true.) In our aboriginal tri-band design, 15 meters would show losses associated with a pair of traps in each element. On 20 meters, the losses would amount to the sum of 2 sets of traps in each element and the double shortening of the overall element length.

There is no easy way to estimate accurately the gain of the early 3-element designs. You might use the monoband performance table in the last episode and compare the boom length and associated gain. But remember that on 10 meters, the boom length might be too long for 3 elements. Then you can come up with an estimated gain on that band. Next, for each trap that is active as an element-shortening load on one side of each element, subtract 0.5 dB. On 15 meters, we shall subtract about 1.5 dB. On 20, we might subtract as much as 3 dB from the potential gain. Since 20 meters is already short in boom length, we would wind up with very little forward gain (perhaps 2 to 2.5 dB) over a dipole at the same height. However, the front-to-back ratio might be useful to us.

You can perform the same exercise on the hybrid beam shown in Fig. 1. However, only count the most active elements on each band. On 10 meters, we have 4 elements. To estimate the baseline potential gain, use the actual distance between the 10-meter reflector and the forward-most element. Since no trap loads the element, gain should be close to an optimal value for the boomlength. On 15 meters, the boomlength is between the rear-most element and the next-to-forward-most element. We find 1 trap on each side of 2 elements, the driver and the reflector. So we might reduce the potential gain by about 1 dB relative to what the boom length and 3 elements suggests for a monoband beam. (Remember to adjust the boomlength for the frequency change.) On 20 meters, we find 4 traps on each side of center for the full array. So we would subtract about 2 dB from the potential gain of a monoband 3-element beam with the same boomlength.

These estimates are very rough and ready, but they prove out in all too many cases. Advertisers tend to make claims that cite the peak gain of the array on its best band for gain and let the buyer assume that they apply to all bands. So if you count traps

Fig. 4



Analyzing a Modern Tri-Band Beam

and estimate the boom length on each band, your revised likely gain figure will in most cases be close to correct.

Modern designs, like the upper sample in Fig. 1, do not use traps. Hence, we do not need to make adjustments for them. Each element serves a single frequency band. These designs have more elements and more aluminum tubing to bend or break in bad weather. However, their performance tends to be closer to monoband beams, if we know how to estimate it. Fig. 4 enlarges the small graphic of Fig. 1 and identifies each element. Note that the boomlength is different for each band of operation. We have a 2-element driver-reflector Yagi for 20 meters and another separate one for 15 meters. The 10-meter beam consists of a driver plus 2 directors.

Since the element spacing on 20 and on 15 is close to optimal for these bands, we can expect fairly standard 2-element Yagi performance on these bands. Although we do not have a 10-meter reflector, we can expect 3-element short-boom performance on that band, or close to it.

Element interactions will moderate these numbers to some degree. On larger modern tri-band Yagis, some 10-meter elements may be very close to 20-meter elements. They prevent the 20-meter elements from shifting the passband lower and hence add very little to the 10-meter gain. Element interaction also tends to reduce the front-to-back ratio relative to what we expect from 3-element or larger Yagis. Anticipate a front-to-back ratio of 12 to 17 dB from 3 or more elements on a band, rather than the standard monoband minimum value of 20 dB.

All multi-band Yagis are compromises. We pay for the convenience of having 1 beam for 3 bands by obtaining lesser performance on many bands compared to monoband Yagis with relevantly similar boom lengths. If we know how to adjust our performance expectations, we shall end up neither overly disappointed nor overly enthused.

In our exploration of tri-band Yagis, we have largely bypassed all of the physical considerations that go into a Yagi installation. Be sure to fully inform yourself about all of the important data so that your installation will be effective, secure, and safe.



# CHAPTER COORDINATOR'S COLUMN

by Cliff Taylor K5FBS #48461



## General Comments

If you are the chapter head or certificate manager of a chapter and are planning a special for your chapter for any period during the months of July through October 2007, please let me know so that I can either list it here if space permits, or list a contact person if space does not permit. We can also decide upon a seal name if one is needed. I would suggest that when thinking about running a special, please take into consideration current propagation. If you want the majority of your members to complete this special, then a worksheet is the best way to go. (Note: This is primarily for those without email capability.)

As I have told you in the past, when submitting your quarterly report, you need only include those items that have changed since the last one. I would recommend that, as part of your chapter's records, you have a copy of the last report submitted to aid in sending a new one. As you can see later in this article, I maintain a suspense file of quarterly reports submitted and just list those that are due as a reminder. BTW, I do read the reports when I get them, so anything that is happening within your chapter that might be of interest to your chapter members can be listed in the "Comments" section.

The hyperlink section of the 10-10 website is well used by 10-10 members. If the hyperlink to your web page has changed, please let either K5CC or me know so that we can get it changed on the 10-10 website. I also check the URL line on the quarterly report, so please include your hyperlink there if you have one.

If you maintain the records for your chapter and something happens so that you are no longer able to continue to do so, and you want your chapter to continue, please have the records maintained in such a way that they can be passed on. Although it is great to do so, the maintenance of a chapter in a certain area is not a requisite any longer. In other words, if a chapter based in such an area can not be continued in that area, someone outside the area can take it. Recent examples of this happening are the Space Coast and Santa Fe Trail Chapters. Someone made an offer to pick up one of the other chapters that was recently QRTed, but as the records were not available, this was not possible.

A listing of the current active 10-10 chapters and the seals for those chapters that are either collectible or used in worksheets, etc. is always available on the WIN1010DL web site. I send the updates for this listing to Jim, K4HAV, 10-10 17605, as needed.

## Quarterly Reports Due

(Dates Listed are Dates of Last Submitted Report)

(February 2005) Whitehouse (January 2006) Castle Craig; City of Lights (February 2006) All American City; Branding Iron I, Branding Iron II, Trail Driver; Chief Seattle (March 2006) Busy Bee; Oklahoma Route 66; Twin Cities (April 2006) Elmer J. Fudd Net; Louisiana Pelican (May 2006) City of Melbourne; City of Roses/Portland Bridges; Cowtown; Outlaws on 10/Bounty Hunter;

Republic of Texas; South Texas Lighthouse Brigade (June 2006) 10-Bar-X; Concho Valley; Lonestar; Michigan Robins; Minuteman/Old Ironside; Steamboat Plus Don't forget that there is now an on-line quarterly report form on the 10-10 website. Drop an email to me for the password.

## Chapter News

Alii: If you haven't done a "word find" yet, just drop a snail mail message with an SASE to NH6SJ for a copy. When you finish it and send it in, be sure to ask for another.

Aloha: (1) The CH's callsign has been changed from AH6RF to AF7DX. (2) The chapter's net time has been changed to 0430 UTC.

Cradle of the Confederacy: (1) A Special Event Station Commemorating the Birthday of Jefferson Davis as President of the Cradle of the Confederacy will be on the air during the period of 0001 UTC, 1 June, to 2359, 7 June 2007. Special QSL Cards are available for this event, Send an SASE, with your QSO information on your QSL Card to N4SOJ, J. J. Bednarz Sr., 450 Pike Rd, Pike Rd, AL 36064-2246. (2) The CM's callsign has been changed from K4OZN to K4PO.

Fort McHenry/Cornerstone: During the month of April collect Fort McHenry Patriot numbers for 1 point each and collect Cornerstone Cannon numbers for 5 points each. Upgrades must be postmarked no later than May 31, 2007.

Lilac City: The CH is now AC7GP, Bob Menach, 4814 W. Houston Dr., Spokane, WA 99208-3724. Email: ac7gp@hotmail.com.

Maine-iacs: The CH's new address is: 165 Middle Rd., North Haven, ME 04853-3116.

New Waterkant: The next official New Waterkant Chapter meeting will be during the period 28 April to 01 May 2007 in North Germany 40 km south of Denmark [if anybody is interested: next airport is Hamburg. Further information about the meeting is available at [http://www.dethlefs-boerm.de/NWK\\_2007.html](http://www.dethlefs-boerm.de/NWK_2007.html). We will have a great program as this is the 5th anniversary of the New Waterkant Chapter.

Oceans of the World/Sun Coast Radio: (1) New information for the CH/CM is: 6455 Evanston St., Weeki Wachi, FL 34613 and email is: dzak@tampabay.rr.com. (2) The chapter's net time has been changed to 2100 UTC.

Portland 500: The new CM is W7HO, Ron Schlitzkus, 2797 Rehalum Street South, Salem, Oregon 97306. Email: Portland500@hughes.net. Ron is also the net control station, so the net control station location is now Salem, Oregon,

Santa Fe Trail: The chapter's net frequency is now 28.380 MHz.

Springbok: (1) In years past when there were 5 CM's across the globe, (now only 3) and there was no access to the internet and email, blocks of numbers were assigned to each CM from South Africa in order to prevent duping in the chapter (even then it did happen though.). We have converted all the main files to computer, and are now able to pass this file through the internet to our CM's every 2 hours from Jim's computer. With this advent we decided to start filling in the left over blocks from the past areas that were lying dormant all these years. Hopefully when we get them all filled in, in the future, that may allow us to do as other chapters do, and do automatic upgrading from the internet!! We hope this move does not offend our older members, but we offered to give these numbers to only over 65, and handicapped hams, no takers. We offered to allow members to trade for lower numbers, again no takers. So now they will be assigned on a first come, first serve basis, and there will be quite a few getting lower numbers.



There are only 13 Basic numbers left. Thus will also apply to the rest if the seal and certificate numbers as we have a lot of Low numbers in the areas for Rep Of South Africa and Oceanic, so any upgrade coming in will now be assigned the next blank number, So you may get a much lower number than one of your friends, But we hope you understand what we are trying to do.. Mike in the same way, by the way, his number is 2350 and now a new member is 112. BUT that does not bother him at all, so long as we can get him on the net's Sunday at 2000z, and we can get his points!!! \*L\* (or on PSK, or anytime once per week will do for us!!!) We are also trying to get all the new forms ready to go to the printers so any member wishing a hard copy may get one..... (2) The net control station is now WA4HMX, Dow, in Meadowview, VA.

Steamboat Plus: The chapter's net frequency has been changed to 28.430 MHz.

Steel City: (1) During the month of April, net check-ins will be worth the Dow Jones stock market closing. This will be the Friday closing for the Sunday net. (2) During the month of June, 5 points will be awarded for each different state worked.

### Chapters that Accept Upgrades Via Email (as of 6 September 2006))

All of the listed chapters generally need previous, new, and total points and seals claimed. Any transaction with the CM that requires that a certificate be issued, and most worksheet specials, should still be handled via US Mail. Also to be on the safe side, a detailed listing of the upgrade should be kept in the event that the CM should require verification. Requirements peculiar to a particular chapter are noted below.

(\* indicates change)

Alii - CM WH6S, wh6s@verizon.net or wh6s@hotmail.com. Use form available from the CM.

Battle Road - CM K1IEQ, k1ieq@juno.com

Bauxite - CM K5BKT, k5bkt@nwla.com - Bauxite and Arkansas Visitor #'s only

Bay Area - CM K6RDK (All except for Bay of Bridges), k6rdk@smm.com CM AC6FU, ac6fu@netscape.com (Bay of Bridges)

Boomtown - CM N5EBA, ed\_cisse\_neal@yahoo.com

Bounty Hunters & Outlaws on Ten - CM WD5EDR, wheberling@satx.rr.com

Borinage - CH/CM ON4CN, claude@on4cn.org

Branding Iron - CM KA5VVD, xit@clearwire.net

Branding Iron II - CM N5XJD, n5xjd@earthlink.net

Castle Craig & Castle Craig Plus - CM N1API, n1api@cox.net

Chesapeake Bay: CM N3TGB, n3tgb2@aol.com

City of Roses & Portland Bridges - CM KD7UZ, kd7uz@arrl.net

\*Colorado Centennial, Colorado Frontier Gang/Centurion & Golden

Aspen - CM WB0CON, wb0con@comcast.net

Colorado Quarter-Master - CM KC0CMZ, kc0cmz@msn.com

Cradle of the Confederacy - CM K4PO, k4po@charter.net

Down Under - CM ZL1KQ, zl1kq@extra.co.nz

Electric City - CM WA2OIZ, istillwell@cfl.rr.com

Fort McHenry, Cornerstone & Yodar Kritch - CM K3TUJ, k3tuj@juno.com

GB Ten - CM G4KHF, gbten@globalnet.co.uk

Gold City - CM N4WAB, gcn4wab@alltel.net, Use on-line upgrade at website. Until further notice send upgrades to N4BBQ, wpheaton@mac.com

Houston S.H.O.T. - CM N5AFV, afmattis@hal-pc.org

Kansas Trails - CM KB6UPG, kb6upg@willmar.com. Upgrade forms are available at: <http://upstel.net/kb6upg/>

Keystone & Keystone Stars - CM KA6GPC, ka6gpc@aol.com

Laurel Mancunium/Emperors/Roman Invasion - CM G3RRM, g3rrm@aol.com

Major League Baseball - CM N6OPR, rlfarrow@catalina-inter.net or n6opr@msn.com

Millennium VIP: CM G4PDR, g4pdr@fsmail.net

Minuteman & Old Ironsides - CM WA1ENO, wa1eno@hotmail.com

Neanderthal - CM CM DK4QO, dk4qo@t-online.de

New Mexico Mud Ducks - CM KM5EH, buckml@lobo.net

New Waterkant - CM DK7LA, dk7la@t-online.de

North Georgia - CM W4GKF, 10x@w4gkf.com

\*Oceans of the World & Sun Coast Radio - CM K4DRZ, dzak@tampabay.rr.com (Please hold off on upgrading until further notice)

Oregon Trailblazer - CM KD7FZY, ckckd7fzy@webtv.net

Palmetto: CM NJ4F, nj4f@arrl.net

Peshtigo Fire - CH KE9MA, ke9ma@charter.net - also need number of contacts

\*Portland 500 - CM W7HO, portland500@hughes.net

Republic of Texas - CM WD8JKV, ray.moyer@sbcglobal.net

\*Restoration Project & Feline Friends - CM VE7ACM, ve\_seven\_wpc@yahoo.ca

Route-66 - CM KA9ADD, ka9add@insightbb.com

\*Sky Blue Waters & Tin Lizzie - CM KA0ZIA, skybluwaters@att.net. Also submit total contacts, basic number(s) with current point value, 10-10 number with date of expiration.

Santa Fe Trail: CM KA9PCU, ka9pcu2@juno.com.

South Texas Lighthouse Brigade - CM N5DAS, n5das@juno.com. also total contacts, and date of issue of original certificate. An upgrade form is available via email. Upgrades can be done on-line on the website.

Space Coast - CM K5FBS, CATK5FBS@aol.com

\*Springbok - CM (for all except Oceania, Asia) W4ZYD, w4zyd@springboknet.com ; CM (for Oceania, Asia) ZL3KR, zl3kr@ihug.co.nz

Steamboat Plus - CM KD5DE, kd5de@nwla.com

Steel City - CM KE9WZ, ke9wz@windstream.net

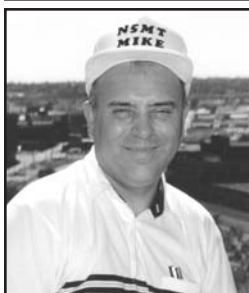
Trail Driver - CM N5SCA, n5sca@sbcglobal.net

Twin Cities - CM K0DBK, k0dbk@comcast.net

These addresses are as current as the information you provide. If there are any additions, corrections or deletions to this list please contact the Chapter Manager, K5FBS, Cliff Taylor via email at catk5fbs@aol.com or via "snail" mail to 22707 Red Mountain Drive, Elmendorf, TX 78112-6034.

### Submission of Information

This column must be in to the editor of the NEWS no later than the first week of the month of March, June, September, and December. So in order to make the deadline and, if you want your chapter information in the current issue, it needs to be in hand by the last day of February, May, August and November. Keep in mind that sometimes the newsletter is delivered a few days into the month rather than being on the 1st. Therefore, if you have a special or worksheet that is going to be done during the months of January, April, July, or October, then the information needs to be in to the Chapter Manager in the prior issue.



# DX NEWS

**Mike Davidson**  
**N5MT #24949**

I just signed off with Ken WX5I #67839, who has been meeting with me each Sunday morning this past winter on the 10-10 DX Net. Today is our last net for the season and because of the Solar Cycle 23 minimum conditions, the number of out-of-town check-ins has been very few all winter. I decided that the DX net would end February 25th and it would start again on November 4th. Propagation for the next eight months is typically only one or two hop short-skip stateside when the band is open. We had no European check-ins during the entire winter season. So, if you really need to work the DX, plan on using a lower frequency where the MUF is allowing propagation. I looked at the DX packet cluster at 1500 UTC and most of the DX spots are on seventeen and fifteen meters coming out of Europe. DX propagation will remain at about the same levels until we get into Solar Cycle 24 and start to get the benefits of increased solar flux and better propagation. It will take the sun about eighteen months from now, before we see any significant change in band openings, so please be patient.

The end of any Solar Cycle tends to put a strain on many 10-10 members that rely on Ten Meters as a prime source of their ham radio activities. The average member spends more time on Ten than other amateur and when there is little or no propagation for days, frustration can mount. I am sure some just give up on Ten and moved on to other activities where they can have their radio fun. So please be patient.

There has not been many DXpeditions this past winter so I wanted to recap this activity. The biggest of them all was a double DXpedition to VU7 Lakshadweep by two separate groups, the first during December and the second group starting January 15th. These islands are off the coast of India in the Indian Ocean. There were several 10-10 members in each group but your chances of working them on Ten would have been remote. Propagation would have been short skip limited to two or three hops on Ten. There was no way we could hear them on Ten in the USA when they were half way around the world and maybe 8-12 skip hops away.

The next most wanted DXpedition was the 1A4A group in the Sovereign Military Order of Malta. This is a special place in Rome, Italy that has a one square block area where the SMOM have their building and for DXCC, it has separate country status. It is activated about once a year for a few days, and this year it was from January 2-8th. Unfortunately, there were no 10-10 members operating. Propagation to the USA on Ten did not occur so you had to use the lower bands if you really needed the country.

The ARRL DX SSB Contest has just finished and I was only able to participate on Sunday. The band co-operated most of the day with skip to the south and west. I had fifty contacts

in seventeen countries. There were not many stations on Ten, so you quickly run out of contacts and it makes for a long day. My friend Chuck W5PR #7412, said he worked a hundred contacts in twenty-six countries all weekend. Skip conditions were sometimes good as I worked one five watt DX station about mid afternoon with at least an S5 signal.

**Countries Award:** There are a total of 618 basic certificates issued. I had only one upgrade this past quarter. Upgrades cost a Self-Addressed Stamped Envelope (SASE) and you can copy your QSL or eQSL cards instead of sending the originals to save postage as copies are not returned. Use the website before you send your application and please email any questions to me.

**Editor's Note:** I am now predicting that "Solar Cycle 24" has just started in February or March 2007. So lets crank up the tower and see what has been happening.

## General 10-10 DX reported in the past quarter

**8P Barbados.** Dean **8P6SH** #45815, were using a special callsign 8P2K during the ARRL 10 Meter Contest the second weekend of December. QSL via KU9C.

**C6 Bahamas.** Joe **W8GEX** #41393 and three friends, were active from Eleuthera from December 5-13th. Randy **W6SJ** #12879, was expected to be on the air as C6AWS from January 28th and stay about ten days.

**C6 Bahamas.** Bob **N4BP/C6AKQ** #3268, was active from the Bahamas from February 12-19th.

**FS St. Martin.** FS5KA was active in the DX contest Feb 17-19th. The team leader is David **K3LP** #13394, with Kam **N3KS** #11541, Dima **N2OW/RA9USU** #54234, and two non-members Krassy K1LZ and Chip N2YO.

**JT Mongolia.** Ken **K4ZW** #18573, was active as JT1/K4ZW from January 15-25th. Ken likes to emphasize the low bands so do not expect much on Ten.

**KH8 American Samoa.** Pete **NOFW** #30703, Jay K4ZLE, Charlie W6KK and Mike N9NS were active as KH8Q from American Samoa from December 1-14th. They operated in the 10 Meter contest. QSL via W8QID.

**P4 Aruba.** John **W2GD** #14109, continues his many years of contest operations from P40W, Aruba, in the ARRL DX CW contest in February. QSL via N2MM.

**PJ4 Netherlands Antilles.** John **K4BAI** #45389, and Jeff KU8E operated mostly CW as PJ4/homecall from the K2NG/PJ4G rental QTH on Bonaire from February 13- 20th. During the contest John used PJ4A and Jeff used PJ4/KU8E mostly part time when not in the contest.

**VK9N Norfolk Island.** The Bavarian Contest Club was back on the DXpedition trail from February 15 to March 3rd. Dieter **DL8OH** #22886 was using callsign VK9N from the Norfolk Islands. QSL via DJ2MX, website at: <http://www.df3cb.com/vk9n>.

**VP2M Montserrat Island.** You may have missed a group on Montserrat from January 29th to February 6th. Budd **W3FF/VP2MFF** #40140, Paul **KB9AVO/VP2MVO** #51946, Bob **AB7ST/VP2MST** #67588, and Tom **W4OKW/VP2MTC** #71435, were all over this active volcano infested island.

**XT2C Burkina-Faso.** A DXpedition took place from Burkina-Faso from January 6-20th with callsign XT2C. The 10-

10 ops were Gerard **F2JD** #63443, Jean-Paul **F8BJI** #71704 using good antennas and they made lots of contacts..

**YV0 Aves Island.** Fifteen operators traveled to Aves Island the second week of February. The only 10-10 member was Conrad **IT9DAA** #30303 using call YW0DX.

**ZD8 Ascension Island.** Bill **W4WX/ZD8WX** #62600 and Jan **K4QD/ZD8QD** #13423, were on Ascension Island from February 19th to 27th. They operated all bands and modes. Island info at: [www.ascension-island.gov.ac](http://www.ascension-island.gov.ac).

**ZP Paraguay.** Dale **N3BNA** #32100, planned to be on as ZP6/N3BNA from late January to about February 5th from Paraguay. Then Dale goes to Haiti from February 11-24th but he was not sure if he could get a license in Haiti.

### Upcoming DX & New 10-10 Activity

**3B7C St. Brandon Island.** September 7-24, 2007 by a large group of operators including: Hakan **SM5AQD** #52781, Arnold **N6HC** #29959, Justin **G4TSH** #42972, Nigel **G4KIU** #36106, and Falk **DK7YY** #23467.

**3W Vietnam.** Stan **3W9JR/OK1JR** #20103, could be in Hanoi for one or two more years. QSL via OK1JN.

**5U Niger.** French operator "Chris" Saint-Arroman, formerly active as TZ9A in Mali, **6W1QV** #45817 in Senegal, has gotten the 5U5U callsign for Niger. He planned to be active on SSB on all bands for one month in January and expects to visit Niger often over the next three years. QSL direct, to Christian Saint-Arroman, Chemin de Mousteguy, F-64990 Urcoit, France.

**9M0 Spratly Islands.** The 9M2SDX Spratly Island Dxpediton begins on March 10th from Pulau Layang Layang and will end on March 19th. The only 10-10 member is Kiyohiro **9M2/JH3GCN** #8850 with ten other ops. The web site is <http://island.geocities.jp/layang9m4sdx/>.

**J8 St. Vincent.** Look for Gary **WOAW** #27080, to be active as J8/WOAW from the Island of Bequia in the Grenadine Islands from March 10-16th. His radio is a ICOM IC-7000 feeding an inverted "L" antenna. Activity will be CW, RTTY, and some SSB. QSL via WOAW.

**OX Greenland.** Dwayne **KD4POJ** #72963, will be on until June 2007 as OX3PG.

**V3 Belize.** Joe **K8JP** #22977 will be in Belize until April 2007 as V31JP. We worked in a February contest on SSB.

**V3 Belize.** Robin **K4VU** #31224 will operate as V31RG from March 21- 28th including the WPX SSB contest as a single op. QSL via his K4VU home callsign.

### Miscellaneous Items & Notes

**ZL New Zealand.** "I have been more or less concentrating on 10 meter PSK over the past 8 months, and the majority of my contacts have been USA plus KH6 the odd VK and a few short-skip ZL. Since December, only one South American Oscar HK6DOS which would be common stuff for most of you guys. Twenty meters has been poor over the past 6 months. About 12 months ago it used to be alive with Europeans in our evenings, but currently you only hear the odd one or two. I guess it is my fault to a degree as I have been more or less dedicated on working the new Digital Award and

the RTTY Endorsement. I need about three to complete the minimum 50 stations for the Digital Award. It is a solid fact that more often than not, there are no audible SSB stations or Beacons and I still managed to make a few PSK contacts. I heard Mel KD5DE calling CQ and the only other signal on the entire band was the local ZL3TEN Beacon. Generally speaking the conditions do tend to favor the southern USA with the occasional movement to the west W6 and W7 and a little to the northeast into Indiana and New Jersey mostly although these latter areas may show up because the stations in that area being a little more active. 73 Alan **ZL3KR** #06251"

**HK Columbia.** HK3W Is the new callsign issued to "Siso" Hennessey, **HK3SGP** #62282. QSL to Siso Hennessey, POBox 02-5242, Miami, FL 33102.

You can see the solar progress and graphs at the NOAA website: <http://www.sec.noaa.gov/SolarCycle/>.

Solar Forecast: <http://www.sel.noaa.gov/forecast.html>. Information on IRCs/US\$ needed for postage to the USA is at: <http://www.qsl.net/w9ol/ircchart.txt>.

QSL help: <http://files.billnjudy.com/>.

DX Calendar: An interactive DX Calendar based on 425 DX News is available at <http://www.dxwatch.com/>.

**Propagation:** Propagation was a topic of discussion at the last hamfest I attended. The reported sighting of early symptoms of Solar Cycle 24 had some Tech operators ready to work the world on Ten. But these reports are just a few of the signs and they need to remain longer to indicate the sun has indeed started the new cycle. Expect the daily solar flux to range from **78-100** the next quarter and the average monthly flux will stay below 88 until Solar Cycle 24 officially is recognized by NOAA.

**Cycle 23 is eleven plus years old.** The flux remains in its lowest range with many days of zero sunspots and few DX openings. **On March 4th, the solar flux was 73 the A index 2 and K index 1** which is 30 points lower than last time. X-ray emissions from the Sun have dropped to their lowest levels in 12 months. This means solar activity is extremely low with little chance of flares or other eruptions.

**Expect the best conditions on March 28-31th, April 1-3th, 27-30th, May 27-31th and June 23-27th.** In March, the USA stations, expect a 5% chance of DX to Asia, Europe or Africa and a 25% chance of talking into South America or Pacific in the afternoon. To tell what DX paths are open, use the beacons from **28.175-28.300 (especially 28.200)**.

**New DX members' Dec 2006 to Feb. 2007:** Dec: 74505 VE3HMM, 74506 DB9DF; Jan: None; Feb: None.

Thanks to the DXNL, The Daily DX by W3UR #25731, QRZ-DX, Lee KH6BZF #8888 & Ohio/Penn DX Bulletins. Send photos/info to Mike Davidson, 3518 Bellefontaine, Houston, TX 77025 USA Email: N5MT@aol.com

DX IS!

73 Mike Davidson N5MT #24949









**WHAT'S IN THE OMAHA AREA?**  
**1-WORLD CLASS HENRY DOORLY ZOO**  
**2-AMERISTAR RIVERBOAT CASINO**  
**3-OMAHA OLD MARKET MUSICIANS**  
**4-OMAHA OLD MARKET SHOPS**  
**5-UP 'CENTENNIAL' DIESEL ENGINE**  
**6-UP 'BIG BOY' STEAM ENGINE**  
**7-FATHER FLANAGAN'S BOYS TOWN**  
**8-STRATEGIC AIR COMMAND MUSEUM**  
*and a whole lot more*  
**SEE YOU AT THE CONVENTION!!!**



# *Christmas Update*

**by Pam Toman, KB9SCM**

December 19, 2006

I came home for winter break this semester after having completed fewer than half my finals. "What could possibly be the reason for that?" you may be asking. "She's a junior at Georgetown University; it's her official occupation to be a student!" Unfortunately, I'd been called by the one thing that trumps all other commitments-jury duty.

I'd been summoned earlier this year, but hadn't been able to attend. The summons arrived the day after I left to return to Washington, D.C. for summer school enrichment classes (computer science and American Sign Language) and to work full time with the Georgetown Department of Public Safety, ensuring that only "authorized community members entered our dorms. I sent the Jury Commission a letter in June informing them that I would not be returning to Illinois until Christmas (the entire situation, of course, was much to my parents' dismay), and after my summer school classes were over, I went off to work for the rest of the summer in Minnesota.

This was my second summer spending seven weeks up in the North Woods at a summer camp-we speak only German there, and it's the sort of place that can't be repeated anywhere else. Our kids are between the ages of 8 and 18 and stay either two or four weeks at Concordia Language Villages. I lived for most of my time with thirteen girls at the beginning of high school who were taking classes there for high school German credit, along with two other (absolutely fantastic) counselors (and then I moved into a cabin by myself, where I understood intuitively for the first time the reason that people are afraid of mice-the pitter-patter of their feet in the middle of the night is the creepiest thing I have yet to experience). Camp is always an amazing experience, and this year I was able to work with high school students, do research in the way students learn the vagaries of German prepositions, and teach a group of adults in our first "Family Week" ever. My adults were between the age of 40 and 70(!) and they were absolutely amazing to work with-their motivation was incredible, and their

German improved an unbelievable amount in the short week they stayed with us. I also became a-get this-certified archery instructor. Yes, me, the vegetarian who has never had the more than the slightest interest in any sport that requires physical skill. Unfortunately, I also don't know the archery terms in anything but German.

In the middle of all this, I called my parents to check in with life. "You've got another notice from the Jury Commission," they informed me. "They've scheduled you to report on January 8th," I boggled. January 8th? But classes resume on January 10th! What if I were actually called to be part of a real trial? How was I supposed to even book a flight to return to school for the spring semester? I wrote back, explaining once more my situation and hoping that they would (ahem) release me from my civic duties.

I returned to Washington and moved in to a new floor, the Culture and Performance Living and Learning Community. Last year I lived on the American Cultures and Politics floor, but I wanted to try something new (and live in a nicer dorm). Living on themed floors is the exception rather than the rule, but these floors offer a sense of sense of community that I found to be lacking from the dorms. So far this year, I've been kayaking for the first time in my life, became hooked on "House," re-watched a number of Star Trek and other movies, and have visited an art museum in the city-led by a friend who knew what she was talking about and actually made the experience enjoyable. I'm also applying to be a Resident Assistant there or somewhere else in Residence Life for next year.

This semester I've been incredibly in Mentis Vita, which is our undergraduate research publication. My fellow co-Editor-in-Chief and I have put in ungodly hours this semester to improve the publication-many weeks we spent over 20 hours each, in addition to upper undergraduate/lower graduate-level classes and, in my case, commuting and working around 15 hours each week (still at the Department of Public Safety, but now as a Supervisor of the Student Guard Program). We've finally come to the end of our term, but next semester we'll still be working with the incoming Editors-in-Chief to train them. With any luck, the burden won't be quite as taxing.

I'm also still involved with a community service

program on campus called Prison Outreach. We commute into Arlington, VA, each week to tutor in the Arlington County Detention facility-two nights of the week, groups work with inmates on the skills they'll need to pass their GEDs, and on my night this semester, we worked with inmates on English as a Second Language. It's incredibly rewarding for us and worthwhile to the men and women we work with, but it's incredibly sobering. Two of the three inmates I worked with this semester were younger than I am, and for the sort of shock that emerges from such a realization is extremely disturbing. These are young men, confined to jail, without high school diplomas, likely to be deported to Guatemala or El Salvador, their whole lives simultaneously ahead of them and limited to nearly nothing.

In brighter news, I am somehow nearing the point where it is necessary to renew my amateur radio license. I earned my Novice class ticket back in February of 1997-with code, might I add. The news that the morse code requirements for amateur licenses will be lifted didn't quite surprise me, but it does somewhat bother me... Mostly because that is the heritage of the hobby, and I don't believe we should overlook it. But that's (thankfully) not my decision to make. It just means that I might be upgrading to an Extra class license sooner than I thought. (Okay, maybe not). I did get Echolink set up on my computer this summer (Echolink amounts to Skype for nerds, but man is it fun), and my father helped me to set up an actual rig in the corner of my room this year (although I have yet to hear anyone through it; I think there is too much interference from all the electronics, and I'm looking forward to trying to get around that when I return in January). In any case, feel free to call me at any time-I won't forget to renew that KB9SCM callsign!

Back to the jury duty that was hanging darkly over my head during all of this....I was able to have the Commission reschedule me for Thursday, December 14th, so that even if I was called for a trial, I would have a full week in which to serve before returning to DC for classes. I was Juror #1. Unfortunately, I had an Arabic final from 4-6 pm on Wednesday the 13th, so I had to leave my dorm that morning at 3 am. I called a shared ride van service-and of course two of the seven people were half an hour late each. I was getting worried for my 6:30

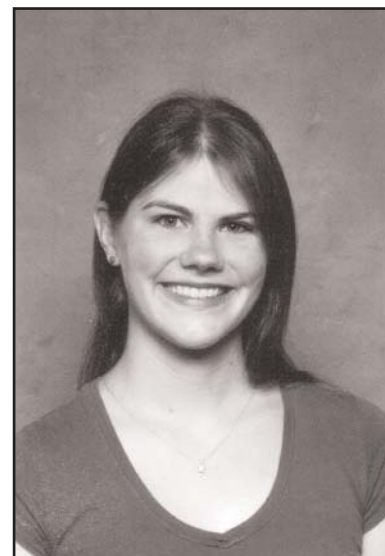
am flight when we hadn't picked up the sixth person by 4:30 (it's a half-hour drive to the airport) but the woman next to me broached the topic with the driver first-her flight was at 6 am. Thankfully I got to the airport on time (and then nearly missed my flight due to my own stupidity-in order to plug my laptop into the wall and work on the 40 pages of final papers I had due on Friday, I sat one gate away and only looked up at 6:22 am.

Jury duty itself went off fabulously, for all the rigmarole leading up to it. I sat in the lounge all day, working furiously on those same 40 pages, and was never called even for an interview. I e-mailed both papers to my professors on Friday, and took a real, live, warm and relaxing bath from midnight to 2 am. Ah, the college life.

This break, I hope to finish up everything that needs to be readied to offer a Worked All Counties-Illinois award for amateur radio and to apply for graduate school in Linguistics. I've been studying Linguistics for three years now, and that's what I'd like to do with the rest of my life. Georgetown offers a 5 year Accelerated Masters Program in Linguistics, which would mean I could graduate in 2009 with both a B.A. and an M.S. It's incredibly tempting, and I will be applying this winter. I'd like to work in Computational Linguistics, which is concerned with the ways that machines can come to better understand and produce human languages-everything from how your query to Google gets processed, to the computers you speak to on help lines, to the way Microsoft Word's grammar and spelling checkers works (and know how to suggest better alternatives).

Thank you so much for the scholarship, once more.

Pam Toman,  
KB9SCM





# 10-10 SCHOLARSHIP FOUNDATION SUPPORTERS



We encourage all of our members to support the 10-10 Scholarship Foundation. Our goal this year is to fund six \$1000 scholarships entirely through member donations outside the dues structure. From 1988 through 2006 we have awarded 60 scholarships for a total of \$56,000. The 10-10 Scholarship Foundation is a qualified 501(c)(3) tax exempt organization and contributions are tax deductible. If you have an employer matching program, please let us know. Why not consider a donation as a Chapter or an individual donation in memory of a fellow ham or loved one? L.B. Cebik, W4RNL, #41159 contributed in the memory of his wife Jean, N4TZP, #49092. If you haven't donated before, we want you to know that all donations, no matter how small, are appreciated and they do add up. At the time you make a donation to your favorite charity, why not write out a check to the 10-10 Scholarship Foundation? Or why not take the lead of Robert Fulton, Jr., N3NOP, #63098. Going back to 2002, he has sent in a donation every time he receives the 10-10 News.

Some of our members have made outstanding contributions and the Board feels that they should be recognized for their special effort. Special thanks this quarter goes to David Topp, W5BXX, #67596 and Robert Clark, KA0WAS, #72482 for their continued outstanding support of the Foundation.

The members listed below became 10-10 Scholarship Foundation Supporters during the months of December, January and February, and we appreciate their support.

## **PLATINUM** (\$1000 or more)

W5BXX.....David Topp.....67596

## **GOLD** (\$500 to \$999)

KA0WAS.....Robert Clark.....72482

## **SILVER** (\$100 to \$499)

WA6TQC .....Harold Scott .....00071  
W4RNL.....L.B. Cebik .....41159  
KA8Q .....Jerry Redding .....73765  
WB2ERD .....Taras Sochan\* .....74082

## **BRONZE** (Up to \$99)

W8RYB.....Robert Payne.....02199  
K6ME .....Terry Cobb, Sr. ....08780  
WB2JHF .....John Scheibley .....20140  
KQ7Y .....Shirlee Moore .....20258  
W1QMT .....James Maimonis .....33925  
WA2NCT .....Richard Mattner .....38761

WD4MUD .....John Darden .....46132  
W1VQP .....Lawrence Mello .....46604  
N2ISE .....David Uchetel .....48300  
AA7FK .....Robert Jensen .....53104  
WB0CON .....Eva Donaldson .....53964  
WB7TEM .....John Gomperts .....58049  
KB5PCI .....James Starkey, Sr. ....58499  
W9EUZ .....Myron Cohn .....62952  
WA3HGT .....Herbert Raemsch .....63062  
N3NOP .....Robert Fulton, Jr. ....63098  
KD4EFJ .....Charles Walther .....64712  
KE4HKT .....Cecil Miller .....65658  
KE4EYI .....Cecil Wagner .....67723  
NT6I .....Robert Bruce .....70454  
W0ZAP .....Richard Parent .....71025  
K5BIL .....Billy Johnson .....71216  
K2GLS .....Robert Willis .....71513  
W4WN .....Joseph Orsak .....71580  
NM5BB .....William Boedeker .....71623  
W6HST .....Wilbert Harris .....71857  
K6GMC .....Gloria Cobb .....71913  
KF6YYO .....Robert Grossman .....71963  
WA9YFV .....Douglas Montgomery .....72368  
AA2MA .....Mark Morgida .....73000  
AG4ON .....James Hinkle .....73071  
W0AJU .....Richard Chapman .....73233  
KN0E .....Milton Garner .....73355  
KB6CMO .....Gene Thorpe .....73648  
N3LYL .....Samuel Lee, Sr. ....73721  
W3ELM .....James Stephens .....73740  
KT3D .....Dennis Fitzgerald .....73793

\* Employer match pending

In addition to the members listed above, we received an anonymous donation that we hope will be matched by the employer.

I am still looking for volunteers to serve on the Scholarship Committee. The goals of the Committee are to oversee the operation of the Scholarship Foundation and the Scholarship Fund, to promote increased participation and to develop the programs necessary for the solicitation of contributions to support the Scholarship Foundation. Please contact me if you would like to help.

You too can become a 10-10 Scholarship Foundation Supporter, by making your check payable to the 10-10 Scholarship Foundation. Please send to:

**10-10 International Net Scholarship Manager**  
**Larry Berger WA2SUH**  
**9 Nancy Boulevard**  
**Merrick, NY 11566-3119**



## 10-10 SCHOLARSHIP APPLICANT INFORMATION

This year the 10-10 International Net, through our non-profit corporation, the 10-10 Scholarship Foundation, funds six \$1000 scholarships, which are administered on its behalf by the Foundation for Amateur Radio (FAR).

Diane Zimmerman, AA3OF, Chairman of FAR's Scholarship Committee, announced the five most recent winners of the 10-10 Scholarships in the October 2006 10-10 International News. Over the past 19 years, 10-10 has funded 65 scholarships valued at \$61,000.

Applicants must be licensed radio amateurs having HF privileges. There is no restriction on the course of study, but applicants must intend to seek at least an Associate degree from a college or university. Non-U.S. amateurs and those seeking graduate degrees are also eligible. Foreign members should be aware that students who study outside the United States are also eligible to receive a 10-10 Scholarship.

It is suggested that every 10-10 member encourage qualified college-bound radio amateurs to take advantage of this opportunity by requesting an application package by letter or QSL card prior to April 30, 2007 from the:

**Foundation for Amateur Radio  
P.O. Box 831  
Riverdale, MD 20738**

Applicants, except those who are active 10-10 members, must provide an endorsement from a current active 10-10 member (one whose dues are current).

Completed applications must be received by FAR prior to June 1, 2007.

## New Life Members

00062	.....K 6YUI	.....Larry A Mallek
02876	.....WA6EGB	.....Edward C Inskeep
17780	.....W 1TMZ	.....Robert Wild
20140	.....WB2JHF	.....John E Scheibley
52478	.....W 1DMM	.....Daniel M Murphy
60945	.....W 6ABM	.....Everett W Curry Jr
63391	.....KA5QYU	.....Sam R Burnes
64116	.....AE6DT	.....Harold E Kerns
64388	.....K 5KMR	.....Ken M Rainey
67596	.....W 5BXX	.....David S Topp
69458	.....KD5COJ	.....James H Taylor Sr
73925	.....KT4UD	.....Leonard A Zbiegien
74562	.....N 9BUB	.....David B Bartlett

## W6OI #109 ON THE AIR

The 10-10 Club Station, W6OI, is available to any current (dues paid) member or chapter for use as a special event station such as Field Day, Chapter gatherings, and radio conventions. Send a written application and copy of your amateur license to include dates and purpose of operation to:

**Jack Moore, K5CC  
W6OI License Trustee  
371 Ridge Creek Ln  
Bulverde TX 78163**

QSL cards are available for special events. W6OI was on the air for the Winter Phone contest on Feb 3,4 and the Mobile contest on Mar 17. Louise Chapman (N6ELK) operates W6OI each Wednesday as the 10-10 Net Control Station beginning at 1800Z on 28.800 MHz. Please include SASE (or use the QSL Bureau) when requesting a QSL card via:

**Louise Chapman, N6ELK  
3210 Clark Ave  
Long Beach CA 90808**

Paperchasers working W6OI can request the chapter list from K5CC. W6OI has FISTS and GERATOL numbers. Contact K5CC to arrange a schedule to obtain these numbers.

## TEN-TEN HILL COUNTRY PICNIC

The 19th Hill Country Picnic will be held on Sunday May 27, 2007 at the home of Jack - K5CC. The Picnic is sponsored by the Outlaw/Bounty Hunter, South Texas Lighthouse Brigade and Space Coast Chapters of 10-10. All 10-10 members are invited as well as those interested in 10-10. Friends and spouses are welcome. There is always plenty of good food and if the band is open, opportunity to operate ten meters. A parking lot net is always held and during the day we will listen on SSB and PSK in the event the band cooperates. If the band doesn't open up, folks just like to sit around and talk about 10-10 and many other subjects. Several 10-10 Officials are expected to attend. If you are interested in attending let K5CC, K5FBS, WD5EDR or N5DAS know. Information will be sent out a few weeks before the Picnic to everyone interested in attending.



# NET NEWS

Bob Farrow N6OPR #45715

The 10-10 International nets meet daily on 28.380 or 28.800 beginning at 1800 hours UTC, except Sunday. Both nets are called simultaneously. The net 28.800 was formed in 1962 and the 28.380 net was added later, accommodating the hams who do not have operating privileges above 28.500 portion of the band. This is a directed open net, and all licensed amateurs are welcome to check in.

The primary purpose is to promote activity and good operating practices on the 10meter Amateur band. We exchange 10-10 numbers, VP numbers, Counties, and States. There are numerous awards that can be attained through 10-10. If you are ready to join our group, we will help you collect the 10 contacts to qualify you for membership.

Thank you for stopping by! N6OPR Bob CA #45715

**10-10 HAS TWO  
OFFICIAL DAILY NETS**

**28.380**

**28.800**

**BOTH RUN AT 1800z  
EVERY DAY EXCEPT  
SUNDAY**

**LISTEN AND IF YOU CAN  
HEAR US - JOIN IN !!!**

## QUARTERLY NET REPORT

28.380			28.800			28.380			28.800			28.380			28.800		
MONDAY NETS						WEDNESDAY NETS						FRIDAY NETS					
DATE	TOTAL	w/o 10x#	DATE	TOTAL	w/o 10x#	DATE	TOTAL	w/o 10x#	DATE	TOTAL	w/o 10x#	DATE	TOTAL	w/o 10x#	DATE	TOTAL	w/o 10x#
10-02	1	0	10-02	17	0	10-04	3	1	10-04	13	0	10-06	1	0	10-06	18	2
10-09	2	0	10-09	17	1	10-11	7	0	10-11	10	0	10-13	2	0	10-13	14	1
10-16	1	0	10-16	14	0	10-18	1	0	10-18	12	0	10-20	3	0	10-20	19	0
10-23	1	0	10-23	16	0	10-25	1	0	10-25	12	0	10-27	8	0	10-27	24	1
10-30	1	0	10-30	15	0	11-01	1	0	11-01	16	0	11-03	1	0	11-03	8	1
11-06	1	0	11-06	21	1	11-08	8	0	11-08	16	0	11-10	1	0	11-10	12	1
11-13	4	1	11-13	15	1	11-15	6	1	11-15	20	0	11-17	24	1	11-17	16	2
11-20	1	0	11-20	15	2	11-22	1	0	11-22	13	0	11-24	2	0	11-24	7	0
11-27	1	0	11-27	22	0	11-29	1	0	11-29	13	0	12-01	1	0	12-01	5	1
12-04	1	0	12-04	15	0	12-06	2	1	12-06	18	0	12-08	2	1	12-08	9	0
12-11	1	0	12-11	15	0	12-13	1	0	12-13	26	0	12-15	1	0	12-15	6	0
12-18	1	0	12-18	17	0	12-20	1	0	12-20	13	0	12-22	2	0	12-22	8	1
12-25	1	0	12-25	14	0	12-27	12	1	12-27	13	0	12-29	1	0	12-29	7	0
TUESDAY NETS						THURSDAY NETS						SATURDAY NETS					
10-03	2	0	10-03	2	0	10-05	18	0	10-05	3	0	10-07	1	0	10-07	10	1
10-10	2	0	10-10	3	0	10-12	6	0	10-12	7	1	10-14	1	0	10-14	12	0
10-17	3	0	10-17	5	0	10-19	15	0	10-19	4	2	10-21	1	0	10-21	14	0
10-24	3	0	10-24	2	0	10-26	14	0	10-26	5	0	10-28	5	1	10-28	13	1
10-31	2	0	10-31	1	0	11-02	16	1	11-02	8	0	11-04	1	0	11-04	11	0
11-07	2	0	11-07	1	0	11-09	13	0	11-09	7	2	11-11	1	0	11-11	13	1
11-14	3	0	11-14	4	0	11-16	17	2	11-16	8	2	11-18	5	0	11-18	13	0
11-21	2	0	11-21	1	0	11-23	14	1	11-23	2	0	11-25	10	3	11-25	15	0
11-28	15	1	11-28	3	0	11-30	23	1	11-30	21	0	12-02	1	0	12-02	10	0
12-05	2	0	12-05	1	0	12-07	25	0	12-07	4	0	12-09	5	0	12-09	13	0
12-12	8	0	12-12	10	0	12-14	18	1	12-14	3	0	12-16	1	0	12-16	14	0
12-19	2	0	12-19	2	0	12-21	22	0	12-21	3	0	12-23	1	0	12-23	15	0
12-26	2	0	12-26	1	0	12-28	21	1	12-28	5	0	12-30	1	0	12-30	13	0

# Silent Keys

Compiled and listed by  
Ruth Bartholomew NØKDB #48715



*It is with sorrow that we note the following Ten-Ten members who are now Silent Keys. We extend our sincere condolences to the families and friends of these SK members whose calls and Ten-Ten numbers will forever be kept in the records of the Ten-Ten Net.*

02362 W1JZA .....William Hulstrunk.....Prospect, CT  
03908 WA9RKI ...Rudy Strothmann .....Sun City, AZ  
04743 W2FHY ....Carol Dohner .....Pennsville, NJ  
04890 WA2CKM..Joseph Rotunno.....Bronx, NY  
06280 KH6BAI ....Roy Blackshear .....Keaau, HI  
06429 W4CG .....William Thomas .....Eufaula, AL  
06829 WB4LZM ..Virgil Elder.....Spring Hill, FL  
07525 K4FHB ....Edwin Baldwin .....Burlington, NC  
08105 N0CKW ....Chuck Albrecht Jr .....Aurora, CO  
10471 N0RK .....Russell Kaelberer.....Aurora, CO  
11345 W8ETH ....Robert Jones .....Royal Oak, MI  
11922 K3HWL.....Robert Myers .....Meadville, PA  
12146 KD2YY .....James Tilley.....Hampton, VA  
12429 W4YF .....John Fulmer.....PonteVedra Beach, FL  
12464 K4PQJ.....Harvey Stringer.....Goose Creek, SC  
13263 K4JO.....Ellicott Valentine .....Winston-Salem, NC  
13618 W5YSK.....Loyt Lathrop .....Albuquerque, NM  
14220 K5AMT .....J.B. Stinnett .....Owawwo, OK  
16222 W8JDU.....Joseph Halpin.....Cincinnati, OH  
19235 KO5A .....Terry Rapp.....Cookeville, TN  
19628 W6RCL.....Alan Kaul.....La Canada, CA  
19988 W9ET.....Jerry Ayers.....Carmel, IN  
20179 N2AGO.....George Meserole.....Cleveland, NY  
20624 KE1U .....Brian Poole .....Scituate, MA  
20888 KF8Y .....Carl Miller .....Fenton, MI  
21091 W4BNE ....Raymond Murphy .....Watauga, TN  
21613 N4BX .....Bob Thomas .....Charlotte, NC  
22728 WB1BVQ ..Albert Frascatore .....Southington, CT  
23013 W8LMP ....Burleigh Olds .....Flint, MI  
23613 W7VRM....William Beitelspach .....Forest Grove, OR  
25463 W1UP .....James Gaudet .....Mason, NH  
25553 KL7AP .....Betty Mallay.....Columbia, MD  
25782 W3BDR ....John Farthing .....Blandon, PA  
26853 WD4EQU..Tony Bober .....N. Fort Meyers, FL  
27560 KB5FB.....James Shea.....San Antonio, TX

28137 K1EAX.....J. Bernard Syriac .....Ludlow, MA  
28767 N3BEK .....John Geist .....Silver Spring, MD  
32146 W3UVG ....Horace Cooper .....Washington, PA  
33427 KE4MS .....Nelson Williams .....Murfreesboro, TN  
35333 N1AXG .....Earl Sunderland.....Lexington, MA  
36317 K2CBK .....James Jacobson.....Thousands Oaks, CA  
37357 KF4SB.....Chester Westervelt.....Columbus, GA  
37952 N0DXQ....Fred Debel .....North St. Paul, MN  
38851 WB4DXH..Ray Tarr .....Hermitage, TN  
39409 WV4Y .....Dan Noe .....Largo, FL  
40326 WE8Q .....Edward Manning.....Beckley, WV  
40520 N2EZP.....Helen Mastandrea .....Brooklyn, NY  
40652 W0DRV ....David Schmieg .....Burlington, IA  
41757 N1FVP.....John Krull .....Springfield, MA  
41935 KA2RWL...Robert Perry .....Angola, NY  
41983 WB2VLI....Frank Cardullo.....Clifton Park, NY  
42422 KA3QOY...Ed Staniech .....Ormond Beach, FL  
43189 N5LRR ....Andrew Taylor .....Woodward, OK  
44670 WB6NFO ..Lawrence Walsh .....Nortridge, CA  
46412 W4DAD ....Joseph Farmer .....Huntsville, AL  
47101 W6KNF ....Vern 'Lee' Baird .....LaVerne, CA  
47151 WH6BKQ..Jerry Mulherin.....Kaneohe, HI  
47829 KB4JNC....Earl Larsson.....Brooksville, FL  
53487 K3BMI .....Max Brown .....Southampton, NJ  
53994 WA0HKF...William Miller .....Troy, MO  
56369 K0VB .....Francis Rauch .....Merino, CO  
56681 N8MOD ....James Parker .....Ashland, OH  
57307 AA9LT .....William Wolford .....Tipton, IN  
57381 KE9XP.....G. Dennis Lear .....Richmond, IN  
59488 AA2FT.....Walter Doty .....Fort Edward, NY  
59765 W4LI .....Ronald Brown .....Kingsport, TN  
62122 W5HNV ....William 'Wil' Cowan .....Austin, TX  
62224 ZS4AE.....Frantz Heidler.....Welkom, S.Africa  
62376 K0YFJ .....Rodney Williams .....Boone, CO  
64869 AB8L.....Bryan Lane .....Allegan, MI  
65226 N0SM.....Charles Simon .....Maryland Heights, MO  
65405 N1HJR ....Francena Galbraith .....Essex Jct., VT  
66808 KB7YG ....Frank Carter Sr .....Yakima, WA  
67361 W6LIN ....Paul Slattery .....Livermore, CA  
68494 KU4MF ....Earnest Leonard.....Briston, VA  
69092 AF4OM....Edward Conroy .....Tampa, FL  
69170 N2ODU ....David Woodburn .....Frewsburg, NY  
69727 KB4XE.....William Manley .....Coral Springs, FL  
69987 K0RTJ .....Donald Williams.....Cedar Rapids, IA  
70801 DL3DCY ...Friedhelm Kemper .....Saterland, Ger  
73928 KD5VIR....Floren Thompson III .....Portales, NM

# TEN-TEN AWARDS

To apply for any 10-10 Award, paid-up membership is mandatory. You are not required to send in proof as the Awards Manager has the current membership database. All contacts made for any award must be legal 10-10 contacts (a full exchange of Call, Name, QTH and 10-10 number from BOTH members). An application listing the rules for each award is available from the appropriate Awards Manager listed at the end of the award listings. Please send your request with a #10 (business size) envelope, self addressed and stamped with one unit of first class postage (or enclose one IRC for GB Award), to the Award Manager for the Award you are interested in obtaining. Please no phone calls to Award Managers for an application or list of rules. Contact requirements and rules for all Awards are available on the 10-10 website - [www.10-10.org](http://www.10-10.org)

TOP TEN HONOR ROLL				VP AWARD			DIGITAL AWARD		
#	CNTCTS	CALL	10-10#	200 Contacts			BASIC AWARD - 25 Contacts		
01	24600	WA5JDU	03017	<u>CERT</u>	<u>CALL</u>	<u>10-10#</u>	<u>CERT</u>	<u>CALL</u>	<u>10-10#</u>
sk	21000	WB1DBZ	26001	313	KB9BZX	68570	040	ZL3KR	06251
sk	19400	WØRWC	00581				041	ZL1LE	23479
sk	17000	PJ2WG	27999				042	KC7OC	67668
sk	16700	W4WKQ	33299				043	K7KTP	13326
sk	16500	K5MRU	00218				50 Contacts		
sk	14100	WB7NUU	17416				<u>CERT</u>	<u>CALL</u>	<u>10-10#</u>
02	11600	K5GAY	11825	<u>CERT</u>	<u>CALL</u>	<u>10-10#</u>	017	KA6GPC	43555
sk	11600	WA9LIC	01599	036	N3ZPO	73973	018	W2BOC	71096
03	11500	KØPV	09902				019	W4GTM	66628
sk	11400	N5CUQ	00040				020	NOWY	68684
04	10800	NS4M	41176				75 Contacts		
sk	10800	KBØON	29849				<u>CERT</u>	<u>CALL</u>	<u>10-10#</u>
sk	10600	W9IAI	35140				005	N6EMI	47123
05	10000	K6PZE	01341	<u>CERT</u>	<u>CALL</u>	<u>10-10#</u>	006	KD5DE	33513
sk	10000	W6YRJ	11911	348	KF4HNO	74046	007	NN1J	41728
sk	10000	KS6A	08873				008	W4JAG	42577
sk	09700	K4HTU	05723				009	KD4BVG	64773
06	09300	N1API	25468				100 Contacts		
07	09200	WDØSFT	37933				<u>CERT</u>	<u>CALL</u>	<u>10-10#</u>
08	09100	N5DAS	35877				004	KB9NZX	68570
09	08600	AC6FU	10937				RTTY Endorsement		
10	08500	K1WQU	02225				<u>CERT</u>	<u>CALL</u>	<u>10-10#</u>
sk	08500	W5EIJ	11732				034	WA7HYD	72769
1000+ BAR							040	ZL3KR	02651
1000 Bar									
<u>CERT</u>	<u>CALL</u>	<u>10-10#</u>		<u>CERT</u>	<u>CALL</u>	<u>10-10#</u>			
1553	KC4RHW	57051		253	KA7ICF	46221			

## AWARD MANAGERS

**Bar 100-900** ....Dan Morris, KZ3T # 41015 .....112 Royal Oak Ct., Lenoir, NC 28645 .....(828) 728-5049 .....dbm72941mo@charter.net  
**Bar 1000+** .....Doris Slye, N3TGB #68129.....708 Doages Dr., Millersville, MD 21108-2132 .....(410) 923-2811 .....n3tgb@aol.com  
**VP Bar** .....Carl Fisher, WØHIK #40678.....5 Angelina Dr., Augusta, KS 67010-2262 .....(316) 775-5900.....wzerohik@aol.com  
**VP WAS** .....Carl Fisher, WØHIK #40678.....5 Angelina Dr., Augusta, KS 67010-2262 .....(316) 775-5900.....wzerohik@aol.com  
**VP Lucky 13**...Dan Morris, KZ3T # 41015 .....112 Royal Oak Ct., Lenoir, NC 28645 .....(828) 728-5049 .....dbm72941mo@charter.net  
**WAC**.....Randy Camron, AJ5ZX #71083.....7641 Gladiola, San Angelo, TX 76901.....(325) 659-2802 .....AJ5ZX@suddenlink.net  
**Counties**.....Brad Kimble, K0DBK #55192 .....3855 66th St. E, Inver Grove Hts, MN 55076-2222 .....(651) 450-1173 .....k0dbk@comcast.net  
**Countries** .....Mike Davidson, N5MT #24949.....3518 Bellefontaine St., Houston, TX 77025-1310 .....(713) 668-8408.....N5MT@aol.com  
**CW** .....Lee Zalaznik, KI6OY #50948.....334 Olivina Ave., Livermore, CA 94551-6137 .....(925) 455-0361 .....lee.zalaznik@sbcglobal.net  
**Digital** .....Mel Sojka, KD5DE #33513.....353 Atlantic Ave., Shreveport, LA 71105-2909 .....(318) 861-7012 .....kd5de@nwla.com  
**Mobile** .....Ed Redwine, K5ERJ #11843 .....9 Yellowrose Lane, Augusta, KS 67010-2230.....(316) 775-5700 .....k5erj@yahoo.com  
**OM/XYL**.....Marcus Lieberman, KM5EH #71103...2300 Hurley Drive NW, Albuquerque, NM 87120-1013 .....(505) 836-1724 .....buckml@lobo.net  
**WAS** .....Eva Donaldson, WBØCON #53964 ....12933 W Montana Drive, Lakewood, CO 80228-4244 .....(303) 989-0475.....wb0con@comcast.net  
**WPX** .....Al Longo, NN1J #41728.....PO Box 94, Springfield, ME 04487-0094 .....(207) 738-3268 .....nn1j@midmaine.com  
**GB Counties** ...Mike Crawshaw, G4BLH #18446 .....50 Kibble Grove, Brierfield, Nelson, Lancs, England BB9 5EW...01144 1282 613754.....g4blh@zen.co.uk



# Anniversary QSO Party Results

<b>ENTRANTS</b>			<b>THEIR CONTACTS</b>								
01	WN4AMO	73825 48	N7YHC	74457	11	N7ELW	44961	2	WB0CW	74402	1
02	K5FBS	48461 37	W4OIX	54432	11	WB7DE	74544	2	WA7DSV	74483	1
03	N6OPR	45715 22	KB7ARN	44977	8	AD5WI	74431	2	AI1Z	40447	1
	KK7UU	10934 22	KF4MH	74495	8	DL3LS	34494	2	K0MGD	74475	1
04	KE1HG	69090 19	WB9VKZ	74423	8	K9TNN	74455	2	W9XA	73844	1
05	N5DAS	35877 18	AC2AA	66744	7	KG8VT	74468	2	WA4FOB	71447	1
06	WA4EEZ	15675 16	KC9FOA	74418	7	DL6DK	39944	2	WA4KKV	74412	1
07	N1API	25468 12	KG6YSX	74489	7	KF7TX	44953	2	K6KOZ	74447	1
08	N0WY	68684 11	W4RHM	74490	7	G4KHF	34443	2	KG0ZR	74481	1
09	N5MT	24949 10	KA0ZIA	44303	6	KB7QMQ	63744	2	NH6RN	74426	1
10	KM5EH	71103 8	W7ORE	74409	6	HP3BS	63440	2	N5VK	44221	1
	KN4Y	17757 8	N4PN	74476	5	K2JGL	70744	2	N5DRV	44892	1
			N3PV	74441	5	KI4GXX	74417	2	WY3X	44197	1
			KA9IUC	44439	4	W4KTF	74461	2	NM0P	74430	1
			N8GB	44001	4	WB4KTF	44762	2	VK2VFW	38944	1
			N7QHC	59244	4	W8JUZ	73443	2	KW4TT	64429	1
			WB6NFO	44670	4	W4KHC	69445	2	KT7E	47644	1
			KD4WVO	74478	4	W3HP	44134	2	KO4CR	74499	1
			WB7BBI	74443	4	W8TOM	74496	2	W3ADC	74453	1
			KI4NEH	74462	4	WB0VBW	44376	2	WB3LOT	44192	1
			W6ASP	73446	4	K4WNY	44232	1	KB5PKW	74480	1
			WX5NCO	74420	4	W5MAI	74491	1	KG4WNL	74463	1
			KA7BHK	74429	4	W7IBI	61844	1	KI6ACO	74414	1
			N9IVO	66444	3	KA4RUR	74421	1	W4OV	07344	1
			AC0W	71644	3	KA3RHV	44179	1	WN4LTY	74477	1
			KM6CZ	06844	3	WX5RP	74435	1	KD5EJG	71445	1
			W4DDR	44248	3	W7PU	04420	1	WB5LYB	44842	1
			W5TTH	74487	3	K8ZT	44561	1	WW7B	44983	1
			K2HT	68440	3	K8TUT	74458	1	KC8UHE	74411	1
			AD5UU	74445	3	K8JV	44028	1	KC6VNI	74425	1
			WA9FM	74464	3	K7BFA	24404	1	KC0RQH	74485	1
			WA7RR	74424	3	K4LQ	17544	1	KB8DNS	49844	1
			WX3B	70445	3	K6JEB	74497	1	KB8BQS	44004	1
			N1QDX	65448	2	WA4RNN	74449	1	N9CHA	74432	1
			AD4IA	64491	2	KB3MOW	72442	1	W5DGF	74470	1
						W5CRD	41445	1	WB9GXX	02744	1

Next year the number to look for is 45. You will have 15 days at the end of the year to send in your list. Rules are listed in the Anniversary QSO Party section of the Contest Rules as shown on page 28.

## W6OI SPECIAL EVENT

The 3rd W6OI Special Event was held 25,26 Nov 2006. The purpose of the Special Event is to work W6OI in as many call areas as possible. Forty-four operators in the ten call areas were authorized to operate W6OI. Thirty-three operators made contacts, ten operators were unable to work anyone and one operator was unable to get on the air. A total of 492 contacts were made broken down as follows: SSB 51 percent, PSK 42 percent, and CW 7 percent.

No station worked all call areas however WN4AMO worked 9 call areas missing only call area 7. The largest number of contacts by one operator was 49 by K9US. Since we are at the bottom of the cycle the number of contacts is not spectacular however it was better than 2005 in which 258 contacts were made. When the band is open the Special Event can be a lot of fun - in 2004 over 3500 contacts were made.

# TEN-TEN CONTEST RESULTS

## WINTER SSB

**Feb 3-4, 2007**
**TOP TEN**

CALL	10-10#	CNTCTS	PTS
01 N2EOC	37549	073/037	0183
02 N5XZ	04530	048/028	0124
03 N5MT	24949	046/017	0109
04 WN4AMO	73825	042/008	0092
05 NA9A	31121	030/006	0066
06 N1API	25468	031/003	0065
07 WS5H	74387	024/016	0064
08 W5GVP	11572	028/003	0059
09 N5WYR	62116	027/002	0056
10 K5LBU	51322	024/006	0054

**CALL AREA 0**

CALL	10-10#	CNTCTS	PTS
KC0RQH	74485	010/002	0022
N0WY	68684	008/002	0018
W0RTV	13962	008/002	0018
N0WM	02724	005/000	0010
KA0HZP	31562	004/000	0008
WB0GGO	03735	004/000	0008
WA6POZ	21274	003/001	0007

**CALL AREA 1**

CALL	10-10#	CNTCTS	PTS
N1API	25468	031/003	0065
K1PU	33916	018/002	0038
N1ZN	73599	017/002	0036
KE1HG	69090	011/001	0023
K1IEQ	31363	009/002	0020
W1DMM	52478	007/001	0015
W1DYJ	65485	002/000	0004

**CALL AREA 2**

CALL	10-10#	CNTCTS	PTS
N2EOC	37549	073/037	0183
AB00X	72879	001/000	0002

**CALL AREA 3**

CALL	10-10#	CNTCTS	PTS
WA2TTI	21530	017/006	0040
W3ADC	74453	015/009	0039
AC3DC	70205	008/004	0020
KA3WWG	56860	009/001	0019
K3BDO	53417	005/000	0010
N3DUE	41066	005/000	0010
NA3H	30502	002/003	0007
N3TXH	68114	003/000	0006
N3FNE	52799	003/000	0006
WA3YLQ	73261	002/000	0004

**CALL AREA 4**

CALL	10-10#	CNTCTS	PTS
WN4AMO	73825	042/008	0092
KN4ZZ	57566	020/004	0044
KA4ULH	74439	020/004	0044
KJ4RV	37776	018/004	0040
KU4W	20986	017/003	0037
N4UGH	49556	016/003	0035
KC4TBS	57419	016/003	0035
N4ANV	18712	016/003	0035
KC4JAN	56060	016/002	0034
KG4GRD	71845	015/003	0033
KR4OE	62657	014/003	0031
N4ERM	34524	014/002	0030
WD4GEO	71574	014/002	0030
N4EWG	29730	014/002	0030
K1GBS	47318	011/003	0025
AA4PR	39481	011/002	0024
KF4WER	71949	009/003	0021
KG4JOO	68235	010/000	0020
KL7NL	62595	009/000	0018
KN4SS	56071	008/002	0018
WA4EEZ	15675	006/002	0014
KQ4PK	63201	005/001	0011
KC4TVZ	60783	003/001	0007
N2OYV	64257	003/000	0006
KD4BVG	64773	001/000	0002
N2EGO	37582	000/001	0001

**CALL AREA 5**

CALL	10-10#	CNTCTS	PTS
N5XZ	04530	048/028	0124
N5MT	24949	046/017	0109
WS5H	74387	024/016	0064
W5GVP	11572	028/003	0059
N5WYR	62116	027/002	0056
K5LBU	51322	024/006	0054
W5VRX	69779	025/003	0053
WD8JKV	20805	025/003	0053
KB5DQX	43610	025/003	0053
KB5UNX	64337	024/004	0052
KF5LO	72289	025/002	0052
W5NDK	24910	022/002	0046
N5DAS	35877	021/004	0046
N5DTT	73679	013/008	0034
KA5EYH	70252	015/002	0032
K5CC	50708	013/003	0029
KD5ZD	37258	014/000	0028
WX5I	67839	011/002	0024
KE5IXV	74567	011/001	0023
NK5W	64094	008/003	0019
KS5V	29418	009/001	0019
WA5RNV	11731	009/001	0019
KM5FF	50356	008/002	0018
KD5DE	33513	008/001	0017

**CALL AREA 6**

CALL	10-10#	CNTCTS	PTS
N6OPR	45715	017/003	0037
WB6OJB	70675	016/002	0034
N6XD	18637	014/001	0029
K6VMN	31623	014/000	0028
KE6RQQ	74224	013/000	0026
KI6ACO	74414	012/000	0024
KD6BYI	63108	012/000	0024
KG6BOV	69136	012/000	0024
KI6CU	73349	010/000	0020
K6PCM	73365	008/000	0016
W6JNU	40127	006/000	0012
KD6SZF	74446	006/000	0012
KC6SEH	59098	004/001	0009

**YOU HAVE TO MAKE CONTACTS TO GET RESULTS**

# TEN-TEN CONTEST RESULTS

## CALL AREA 7

CALL	10-10#	CNTCTS	PTS
N7QHC	59244	010/011	0031
N7GTW	62504	008/007	0023
W6AEA	68082	007/007	0021
K7CWS	50288	008/002	0018
W7GSV	07673	003/004	0010
WA7RR	74424	002/000	0004

## CALL AREA 8

CALL	10-10#	CNTCTS	PTS
KC8IM	31959	016/007	0039
K8DEL	02978	013/002	0028
W8KVU	57778	012/004	0028
W8PJY	14574	012/001	0025
W8JSM	00934	012/001	0025
WD8MQJ	30405	008/003	0019
N8KOJ	58807	008/001	0017
WC8E	27415	007/001	0015
KB8UUZ	67605	001/004	0006
W8KNO	71899	001/002	0004

## CALL AREA 9

CALL	10-10#	CNTCTS	PTS
NA9A	31121	030/006	0066
KB9NZX	68570	004/006	0014

## AUSTRALIA

CALL	10-10#	CNTCTS	PTS
VK2MJV	38989	002/009	0013

## CANADA

CALL	10-10#	CNTCTS	PTS
VE5BCS	42027	003/000	0006

## GERMANY

CALL	10-10#	CNTCTS	PTS
DK4QO	69087	017/001	0035
DJ6SE	68935	017/000	0034
DJ2YE	68904	014/000	0028

## HAWAII

CALL	10-10#	CNTCTS	PTS
AF7DX	08121	015/011	0041
N7HPE	74456	001/000	0002

## JAPAN

CALL	10-10#	CNTCTS	PTS
JH7RTQ	69817	003/007	0013

## NEW ZEALAND

CALL	10-10#	CNTCTS	PTS
ZL1LE	23497	006/000	0012
ZL1KQ	23471	001/001	0003

## ORP

CALL	10-10#	CNTCTS	PTS
AD5IF	73372	015/002	0032

## CLUB

W1NRG	29650	031/000	0062
(Op. N1API)			
KD5BZC	42114	008/001	0017
(Op. KD5DE)			

## CHECKLOG - THANKS!

CALL	10-10#	CNTCTS	PTS
NM5H	68588	046/017	0109
(Op. N5MT)			
AC2AA	66744	035/023	0093
WS5U	41435	010/010	0030
KI8I	68783	011/002	0024
WB0IWG	59356	001/000	0002

## CHAPTER SCORES

CHAPTER	LOGs	PTs
PossumTrot	018	0525
Lonestar	009	0452
HoustonSHOT	007	0441
CastleCraig	005	0216
ChannellIslands	010	0207
CATT	007	0157
STLHB	004	0126

CityOfLights	001	0066
Neanderthal	002	0063
Gateway	004	0044
Aloha	002	0043
BattleRoad	002	0043
MichiganRobins	001	0039
NMMudDucks	002	0037
RedRiverValley	002	0034
SunCoast	002	0026
CrazyEights	003	0023
LilacCity	001	0021
OceansOfWorld	001	0021
ArizonaDesert	001	0018
DownUnder	001	0012
GoldCity	001	0007
FtMcHenry	001	0006
NorthGeorgia	001	0002

## SOAPBOX

**AF7DX**...Worst band conditions I can remember..Hope next one is better. = **KE1HG**...Sure had a lotta fun this time. Talked to mostly the locals. thanks for everything = **NOWY**...one short opening to Texas and then boom! there's N2EOC! = **N1API**...Better than last year! = **N3TXH**...Not a lot of activity but, I had fun. = **NA9A**...Only had 2 short openings: to TX and FL. Wish more were active but can't blame anyone for not wanting to sit for hours hearing no activity. = **W6JNU**...Not a good contest for me this time as you can see. I'm kind of ashamed sending this in. = **W8KNO**...STILL WAITING FOR CONDITIONS TO IMPROVE, GOOD TO WORK ANYONE! = **WA4EEZ**...This was rough! Glad for small opening Sunday..better times are coming!!!

**YOU HAVE TO MAKE CONTACTS TO GET RESULTS**



# TEN-TEN CONTEST RULES

## 6.2 10-10 QSO PARTIES

10-10 QSO Parties are contests that are held for fun and to meet old, new and prospective members around the world. The rules listed here are for all general QSO parties. The Anniversary and Mobile QSO Parties are specialty contests and do have additional rules.

### 6.2.1 WHO IS ELIGIBLE?

Contests are open to all amateurs with operating privileges on the 10 meter band, however logs will be accepted only from active members as of the date of the contest. Other logs received will be handled as checklogs. Checklogs are used to validate (check) other logs but do not receive awards.

### 6.2.2 WHEN ARE THE QSO PARTIES?

There are currently five QSO Parties held through the calendar year:

Winter Phone Contest - held on the first full weekend in February

0001 UTC Saturday through 2359 UTC Sunday.

Spring CW Contest - held on the first full weekend in May

0001 UTC Saturday through 2359 UTC Sunday.

Summer Phone Contest - held on the first full weekend in August

0001 UTC Saturday through 2359 UTC Sunday.

Sprint - a 24 hour contest held on October 10th (10/10)

0001 UTC through 2359 UTC.

Fall CW Contest - held on the last full weekend in October

0001 UTC Saturday through 2359 UTC Sunday.

### 6.2.3 FREQUENCY AND MODES

Direct unassisted contacts only are permitted. Repeater, Satellite, IRLP or any other similar types of assisted contacts are NOT allowed.

CW Contests should be operated in the CW portion of the 10 meter band and operated using CW and/or any Digital mode (RTTY, PSK, etc.).

Phone contests must be operated in the PHONE portion of the 10 meter band and may be operated using any approved Phone method (SSB, FM, AM).

The SPRINT utilizes both CW and Phone portions of the 10 meter band.

**NOTE: A QUIET ZONE between 28.490 and 28.510 shall be in effect during contests using the Phone portion of the 10 meter band to allow for non-contest use of the band.**

### 6.2.4 ENTRY CLASSIFICATION

Entrant may submit a log in ANY of the following classifications:

INDIVIDUAL: includes single station operators and can also include OM/XYL teams or any families or groups of people using individual call signs and 10-10 numbers.

QRP: same as an individual as listed above except that output power does not exceed 5 watts with CW/Digital operations and/or 10 watts with Phone operations during the entire contest.

CLUB: A Club must have a valid club station license issued by their National Licensing Authority. The Club must have active 10-10 membership. Club entries must additionally list the call, name and 10-10 number (if any) for all operators. Operators entering under a club entry may also enter an individual log for contacts made using their own call sign.

### 6.2.5 TRANSMITTER INFORMATION

An operator may operate mobile, portable or fixed. If they change their exchange QTH during the contest, the operator must show same in their log. The operator may enter a log from only one call district, province, or DX country. Multi-transmitters (two or more transmitters operating simultaneously, sharing one call sign) are NOT permitted in any QSO Party. If a single transmitter becomes inoperable, it is permissible to change to a replacement transmitter.

### 6.2.6 EXCHANGE

10-10 members send call sign, name, 10-10# and QTH (State, Province or Country). If received exchange does not have a 10-10#, then record a zero[0] in the log.

### 6.2.7 QSO POINTS

Two (2) points are awarded for contacts WITH a 10-10 number.

One (1) point is awarded for contacts WITHOUT a 10-10 number.

Duplicate entries should be retained in log and show a zero[0] for points.

Any log showing 10% or more errors may be handled as a checklog.

A station may be counted only once regardless of mode.

### 6.2.8 CHAPTER SCORE ASSIGNMENT

Any entrant who is a chapter member and whose contest operating location is within 150 miles of the primary net location of that chapter, may assign the entrant's score to that chapter. Contest scores for a sprint may not be assigned.

### 6.2.9 CONTEST ENTRIES

Logs shall be forwarded to the Contest Scorer as identified in the 10-10 NEWS or on the 10-10 web site. It is strongly suggested that logs be sent as soon as possible after the close of the contest. It is also recommended that DX logs should be sent AIR MAIL to insure they are received in good time. Any logs received with a postmark date AFTER the deadline date will be handled as a checklog. Any logs received more than 15 days after the contest entry deadline, regardless of postmark, will be discarded.

#### 6.2.9.1 ENTRY DESCRIPTION

Entries must contain a Cover Sheet, Log, and Dupe Sheet as described here:

COVER SHEET will list the Event Entered, Entry Classification, US Call Area (W0-W9)

or DX Country, Chapter Score Assignment (if any), number of contacts and points with 10-10#, number of contacts and points without 10-10#, and total contacts and points claimed.

LOG must be listed in date/time order and list UTC Date, UTC Time, Call, Name, 10-10# (zero [0] if none), QTH and Contact Point Value.

DUPE SHEET is required for any logs exceeding 50 contacts. It may be either a list of all calls contacted in call sign order, or hand entered on a dupe sheet grid.

#### 6.2.9.3 ENTRY DEADLINE

Entries for all contests listed EXCEPT the Sprint shall be postmarked no later than 15 calendar days (this will always be a Monday) after the close of the contest. Mailed entries for the Sprint (held on 10/10) shall be postmarked no later than October 25th, unless that day falls on a Sunday, then the postmark deadline shall be October 26th.

### 6.2.10 CONTEST RESULTS AND AWARDS

Contest results will be posted on the 10-10 web site about 15 days after the closing deadline for the contest, and also printed in the 10-10 NEWS in the appropriate issue. Awards will be issued by the certificate manager for Top Ten Individual scorers in the World, the top Individual scorer in each US Call Area (W0-W9) and each DX Country, and for top QRP, CLUB and CHAPTER.

### 6.2.11 ANNIVERSARY QSO PARTY

This event runs from January 1 0001 UTC to December 31 2359 UTC. Entrants may submit a log of contacts with members that have 10-10's anniversary year contained in their membership number.

Example: 2002 is the 40th anniversary year of 10-10 International Net, Inc. Contact with members containing a "40" in their membership number (i.e., 72040, 69405, 64054, 40126, 00407) would count toward the contest. Each year the anniversary number changes, making a new group of members the focus of the contest and promoting the use of the 10-meter band. All general rules are applicable with the following exceptions:

During the calendar year (January 1 through December 31) make legal 10-10 contacts with 10-10 Number, Date, Call Sign, Name, QTH, with members containing the anniversary year in their membership number as described above.

Contacts must be made on the 10-meter band with any legal mode (AM, SSB, FM, PSK, CW, etc.) but all contacts must be made direct and unassisted. NO repeater, satellite, or Internet assisted contacts are permitted. The contact mode must be recorded in the log entry.

All submitted logs must contain only one entry for each 10-10 number contacted. Contacts MUST be listed in 10-10 number order and each entry must list the 10-10 Number, Date, Call Sign, Name, QTH and Mode, in that order.

This contest is for Individual entries as described in section 6.2.4 and certificates will be awarded for the Top Ten, however all entrants will be listed in the 10-10 NEWS. Logs shall be forwarded to the Contest Scorer as identified in the 10-10 NEWS or on the 10-10 web site. Logs MUST be postmarked no later than January 15th of the year following the anniversary contest year entered. Only members in good standing (with dues paid) are allowed to submit logs.

### 6.2.12 MOBILE QSO PARTY

This event is held on the third Saturday in March from 0001 to 2359 UTC. All general rules are applicable with the following exceptions:

Fixed stations contact mobiles, mobiles contact everyone. Mobile applies to vehicular, marine, aeronautical or other mode of transportation. If in doubt, contact the Contest Manager. A station operating a mobile entry must be a true mobile. Sitting in the driveway and using the base station antenna or amplifier, or using commercial power is not permitted. RV generators are permitted only if the generator is used while in transit (moving).

Operation while your vehicle is parked across a county line, occupying two counties, counts as two counties and two contacts. Marine and aeronautical mobiles must be able to establish counties of operation.

The contest exchange shall be Call, Name, State, 10-10 Number (if a member, zero(0) if not), and county (if applicable). Only counties in the USA, Canada and England may be used as a multiplier.

Count one point for each contact whether a member or not. Fixed stations multiply the number of contacts by the number of different counties worked. Mobile stations multiply the number of contacts by the number of different counties worked PLUS a bonus of the number of counties worked from.

All stations must submit separate logs for the counties worked from. Log scores will be combined by the contest manager.

Logs shall be forwarded to the Contest Scorer as identified in the 10-10 NEWS or on the 10-10 web site. Logs MUST be postmarked no later than 14 days after the end of the contest. Only members in good standing (with dues paid) are allowed to submit logs.

### 6.2.13 FOR MORE INFORMATION

Current information about 10-10 and upcoming 10-10 QSO Parties is always available on the 10-10 web site. Contest cover sheets, logging forms and dupe sheets are also available for downloading or printing. The address is <http://www.ten-ten.org>

Any unanswered questions regarding the QSO Party rules may be forwarded to the Contest Manager.

**T E N - T E N N E T G U I D E***as of 9 March 1007*

DAY	ZSUM	ZWIN	CHAPTER	QTH	FREQ	DAY	ZSUM	ZWIN	CHAPTER	QTH	FREQ
SUN	0300	0400	Chief Seattle	Seattle, WA	28630	WED	0100	0200	Houston SHOT	Houston, TX	28488
SUN	0830	0930	Borinage	Colfontaine, ON	28785	WED	0200	0300	10 Bar X	El Paso, TX	28440
SUN	1200	1300	Elmer J Fudd Net	Berwick, PA	28340	WED	0300	0400	Edmonton Area/City of Champions	Edmonton, ALB	28520
SUN	1300	1400	GB Ten	Spalding, G	28860	WED	0300	0400	Chief Seattle	Seattle, WA	28630
SUN	1300	1400	Arlington	Arlington, VA	29200	WED	1200	1300	Elmer J Fudd Net	Berwick, PA	28340
SUN	1500	1600	Neanderthal Chapter	Leichlingen, DL	28355	WED	1700		Gold City	Dawsonville, GA	28425
SUN	1530	1630	Steel City	Chicago, IL	28420	WED	1700	1800	Channel Islands	Oxnard, CA	28340
SUN	1630	1730	Possum Trot	Raeford, NC	28345	WED	1900	2000	Outlaws on Ten	San Antonio, TX	28644
SUN	1700	1800	Major League Baseball	La Mirada, CA	28380	WED	2200	2300	Route-66	Boonville, IN	28370
SUN	1800	1900	Portland 500	Salem, OR	28350	WED	2300	2359	Michigan Robins	Southfield, MI	28493
*SUN	1900	2000	Springbok	Meadowview, VA	28385	W/T	2359	0059	Battle Road	Mason, NH	28390
SUN	1930		North Georgia	Atlanta, GA	28610	THU	0001	0100	Egyptian Radio Club	Granite City, IL	28420
SUN	2100	2200	Possum Trot	Raeford, NC	28150 CW	THU	0001		Cradle of the Confederacy	Pike Road, AL	28350
SUN	2200	2230	SO TX Lighthorse Brigade	San Antonio, TX	28345	THU	0100	0200	Cowtown	Arlington, TX	28710
MON	0001	0100	Chesapeake Bay	Chestertown, MD	28435	THU	0100	0200	Gateway	St Louis, MO	28650
MON	0030	0130	Minuteman	Saugus, MA	28150 CW	THU	0100	0200	Milwaukee	Milwaukee, WI	28365
MON	0100		Arizona Desert 10-10 Net	Phoenix, AZ	28445	THU	0130	0230	Cowtown	Arlington, TX	28460
MON	0100	0200	Milwaukee	Milwaukee, WI	28365	THU	0230	0330	Windfarms	Livermore, CA	28485
MON	0100	0200	Lonestar	Arlington, TX	28460	THU	0300	0400	Chief Seattle	Seattle, WA	28630
MON	0030	0130	Palmetto	Hollywood, SC	28450	THU	1200	1300	Elmer J Fudd Net	Berwick, PA	28340
MON	0130	0230	Bauxite	Benton, AR	28470	THU	1300	1400	GB Ten/Laurel Mancunium	Spalding, G	28870
MON	0200	0300	Sky Blue Waters	Afton, MN	28715	THU	2000		Branding Iron	Kemper, TX	28345
MON	0300	0400	Chief Seattle	Seattle, WA	28630	FRI	0001	0100	Crazy Eights	McKeesport, PA	28388.88
MON	1200	1300	Elmer J Fudd Net	Berwick, PA	28340	FRI	0001	0100	Ft McHenry/Cornerstone/Yodar Kritch	Arbutus, MD	28370
MON	1700		Colorado Quartermaster	Widefield, CO	28120 PSK	FRI	0100	0200	Sky Blue Waters	Afton, MN	28380
MON	2030		Space Coast	Elmendorf, TX	28355	FRI	0300	0400	Chief Seattle	Seattle, WA	28430
MON	2130	2200	Colorado Quartermaster	Widefield, CO	28360	FRI	1200	1300	Elmer J Fudd Net	Berwick, PA	28340
*MON	2100		Oceans of the World/Sun Coast RadioWeeki	Wachee, FL	28375	FRI	1400		New Waterkant	Boerm, DL	28355
MON	2300	2359	Trotters and Pacers	Cranberry, NJ	28755	FRI	2230	2130	Down Under	Auckland, ZL	28530
*MON	2330		Santa Fe Trail	Galesburg, IL	28380	SAT	0001	0100	MAINE-iacs	North Haven, ME	28402.5
TUE	0001	0100	Ft McHenry/Cornerstone/Yodar Kritch	Arbutus, MD	28370	SAT	0100	0200	Busy Bee	San Angelo, TX	28360
TUE	0100	0200	CO Centennial/CO Frontier Gang	Lakewood, CO	28340	SAT	0300	0400	Chief Seattle	Seattle, WA	28630
TUE	0100	0200	City of Lights	St Charles, IL	28150 CW	SAT	1200	1300	Elmer J Fudd Net	Berwick, PA	28340
TUE	0130	0230	City of Lights	St Charles, IL	28720	SAT	1330	1430	Trotters & Pacers	Monroe, NJ	28755
TUE	0130	0230	Bauxite	Benton, AR	28470	*SAT	1430	1530	Steamboat Plus	Shreveport, LA	28430
TUE	0130	0230	OK Route 66 Chapter	Oklahoma City, OK	28390	SAT	1500	1600	Republic of Texas	Eules, TX	28460
TUE	0200	0300	Concho Valley	San Angelo, TX	28360	SAT	1510	1610	Louisiana Pelican 10-10 Net	Baker, LA	28450
TUE	0300	0400	Chief Seattle	Seattle, WA	28430	SAT	1600	1700	City of Roses	Beaverton, OR	28835
TUE	0300	0400	Bay Area	Hayward, CA	28475	SAT	1630	1730	Boomtown	Burkburnett, TX	28402
*TUE	0430		Aloha	Hakalau, HI	28487	SAT	1700	1800	Lilac City	Spokane, WA	28390
TUE	1200	1300	Elmer J Fudd Net	Berwick, PA	28340	SAT	1730	1830	Tango	Buenos Aires, LU	28650
TUE	1500	1600	New Mexico Mud Ducks	Albuquerque, NM	28835	SAT	1800		Keystone/Keystone Stars	Brea, CA	28765
TUE	1800		Electric City	Melbourne, FL	28425	SAT	1900		Peshtigo Fire	Wisconsin Rapids, WI	28370
TUE	2000		Branding Iron	Kemper, TX	28345	SAT	2000		Restoration Project	Port Alberni, BC	28747
TUE	2030	2130	Twin Cities	Inver Grove Heights, MN	28325	SAT	2200		Alii	Lihue, HI	28730
TUE	2300	2359	Fort McHenry	Arbutus, MD	28370	SAT	2300		Oregon Trailblazers	Lander, WY	28450
T/W	2330	0030	Republic of Texas	Eules, TX	28560	(*) New or change					
WED	0001	0100	Castle Craig	Meriden, CT	28375	All changes to the above times and/or frequencies should be referred to the Chapter Manager if you desire accuracy of your net.					
WED	0030		Kansas Trails	Grove City, MN	28385	Chapter Manager: K5FBS, Clifford A Taylor, 22707 Red Mountain Drive, Elmendorf, TX 78112-6034. Email: catk5fbs@aol.com					
WED	0030	0130	All American City	Birmingham, AL	28400						
WED	0030	0130	Minuteman	Saugus, MA	28409						
WED	0100		Cincinnati Area Ten Tuners	Milan, IN	28800						

# MEMBERSHIP INFORMATION AND SERVICES

## WOULD YOU LIKE TO JOIN 10-10?

*Here is what you need:*

1. You must hold a valid amateur operator license.
2. Your valid amateur operator license MUST authorize or qualify you for unsupervised transmitting operations in the ten meter amateur band under your own personal call sign.
3. You must make contact with ten members of 10-10 and submit a log listing all contacts, their 10-10 number, call sign, name, date of contact, and QTH (state/province/country). A new member application and contact log is available in Section 1 on page 31 of this publication.
4. You must remit dues for one or more years full membership. Fee schedule and payment information can be found in Section 2 on page 31 of this publication.

## TYPES OF MEMBERSHIPS

*Please see fee schedule in Section 2 on Page 31*

### Primary Membership

Primary membership is available with yearly dues, although there is a special incentive available when you pay for three years at once.

### Family Membership

Family membership consists of a primary member and one or more family members who qualify as a 10-10 member (has made the necessary 10 contacts) and who reside at the same location and postal address. Family memberships run concurrently with that of the primary member. Add \$5 for each additional family member for each year. Only the primary member will receive a copy of the 10-10 News.

### Life Membership

Life membership is available and may be paid in one lump sum or spread across two or three years. If you wish information on the extended payment plan, please contact the 10-10 Data Manager.

### Senior Life Membership

Senior life membership is available to anyone who is currently 65 years of age or older. Extended payment plan is not offered with senior life membership.

*Family Life Membership* is no longer available

## MEMBERSHIP RENEWALS

Fill out fee schedule and method of payment in Section 2 on Page 31 and forward as indicated to Data Manager or DX Area Manager. Please make sure you include a copy of your address label with form. If you do not have a copy of your address label (renewing after your membership has lapsed), please include a note with your name, current mailing address, call sign and 10-10 number.

## DATA MANAGER SERVICES

### Call/Name/Address Changes

All changes are to be sent to the 10-10 Data Manager. Please include your address label (or a copy) with necessary corrections.

### 10-10 Information Brochure

The 10-10 Information Brochure is 14 pages of everything you would want to know about 10-10. Available for \$2 postpaid along with a return address label.

### XXIP

XXIP offers 10-10 number, call, name, address, city, state/country, membership status, expiration date, and SK status. XXIP will print a simple address label. XXIP is updated monthly and is available on a CD-ROM or by download from the LinGer web site. Order from the Data Manager: CD-ROM for \$10 US Zip Codes or \$13 DX postpaid. For download version e-mail the Data Manager <wa6poz@arrl.net> or go to <www.lingerinc.com> for instructions.

### AN-TEN-TEN-NAS

AN-TEN-TEN-NAS is a book by L.B. Cebik containing 30 articles and designs for 10 meter antennas from the pages of the 10-10 NEWS. The price has been drastically reduced to \$5.00 USD or free if you renew for 3 years. You must also include the additional \$5 US or \$8 DX for shipping.

### ALL THE NEWS ON CD-ROM

Every published issue of the 10-10 NEWS on one CD. \$20 All profits from the sale of AN-TEN-TEN-NAS and the 10-10 NEWS on CD-ROM go to the 10-10 Scholarship Foundation.

Payment may be made by Check, Money Order or IRC's (\$1 USD per IRC). VISA and Mastercard are also acceptable. Please provide Card Number, Expiration Date, Name on Card, Phone Number and signature of Cardholder. Mail to:

**Data Manager, 10-10 International Net, Inc.**  
**PMB142**  
**643 N. 98th Street**  
**Omaha, NE 68114-2342**

## SCHOLARSHIP DONATIONS

Donations to the 10-10 Scholarship Foundation are requested from each member on an annual basis to help fund the five \$1000 10-10 scholarships. Your check should be made payable to the 10-10 Scholarship Foundation and sent to:

**Larry Berger, WA2SUH #00407**  
**10-10 Scholarship Manager**  
**9 Nancy Blvd.**  
**Merrick, NY 11566-3119**



**SECTION 1 - MEMBERSHIP APPLICATION AND CONTACT LOG**

NOTE: If this membership application is being used for renewal purposes, please enter your 10-10 number here \_\_\_\_\_

Please print your Name \_\_\_\_\_ Call \_\_\_\_\_

Address \_\_\_\_\_ Year of Birth \_\_\_\_\_

City \_\_\_\_\_ State or Country \_\_\_\_\_

Postal/Zip Code \_\_\_\_\_ E-mail Address \_\_\_\_\_

NOTE: 10-10 NUMBER, CALL, NAME, ADDRESS, MEMBERSHIP STATUS AND E-MAIL ADDRESS IS MADE AVAILABLE TO ALL MEMBERS VIA A MEMBERSHIP ROSTER. ALL OTHER INFORMATION IS KEPT CONFIDENTIAL AND NOT DISCLOSED EXCEPT BY THE ORDER OF A LAWFUL COURT.

I certify that I meet the membership requirements\* of 10-10 \_\_\_\_\_

\* as listed on Page 30 of this publication

YOUR SIGNATURE

	10-10 NUMBER	CALL SIGN	OPERATOR'S NAME	DATE OF CONTACT	QTH (State, Province or DX Country)
1					
2					
3					
4					
5					
6					
7					
8					
9					
10					

**SECTION 2 - FEE SCHEDULE AND PAYMENT INFORMATION**

10-10 FEE SCHEDULE (eff 2/1/03)	US Zip Codes	DX
New Members	<input type="checkbox"/> \$ 15	<input type="checkbox"/> \$ 18
Renewals (yearly)	<input type="checkbox"/> \$ 15	<input type="checkbox"/> \$ 18
Renewals - 3 year incentive	<input type="checkbox"/> \$ 40	<input type="checkbox"/> \$ 49
Family Membership (yearly)	<input type="checkbox"/> \$ 5	<input type="checkbox"/> \$ 5
Life Membership	<input type="checkbox"/> \$ 500	<input type="checkbox"/> \$ 650
Senior Life	<input type="checkbox"/> \$ 150	<input type="checkbox"/> \$ 200
Scholarship Foundation Donation	<input type="checkbox"/> \$ ____	<input type="checkbox"/> \$ ____
Enter Total		

mail to  
**Data Manager, Ten-Ten International Net, Inc.**  
**PMB142**  
**643 N. 98th Street**  
**Omaha, NE 68114-2342 USA**  
 for information email: wa6poz@arrl.net

**METHOD OF PAYMENT**

☐ CHECK Make all checks payable to 10-10 International Net, Inc. Please list your call and 10-10# on your check.

Do not send cash. All DX are reminded that money amounts are quoted in US Dollars.

DX Members please pay by International Postal Money Orders (IRC's are acceptable).

☐ MASTERCARD Account Number (Please include all the numbers on your credit card)

☐ VISA

□□□□ □□□□ □□□□ □□□□

Good Through: □□/□□

Name of Cardholder \_\_\_\_\_ PHONE (required): \_\_\_\_\_

SIGNATURE of Cardholder \_\_\_\_\_ Date: \_\_\_\_\_

For charges this form may be faxed to 10-10 International Net, Inc. at 402-393-6117

# 10-10 QSO PARTY COVER SHEET

Callsign \_\_\_\_\_ 10-10# \_\_\_\_\_ Name used in contest \_\_\_\_\_

Name \_\_\_\_\_

Address \_\_\_\_\_

City \_\_\_\_\_

State/Province/Country \_\_\_\_\_ Zip \_\_\_\_\_

your e-mail address (for contest questions only) \_\_\_\_\_

<b>2007 CONTESTS</b> <table border="1"> <thead> <tr> <th></th> <th>Contest</th> <th>Postmark</th> </tr> </thead> <tbody> <tr> <td><input type="checkbox"/> Winter Phone . . . . .</td> <td>Feb 3-4 . . . . .</td> <td>Feb 19</td> </tr> <tr> <td><input type="checkbox"/> Mobile Contest . . . . .</td> <td>Mar 17 . . . . .</td> <td>Apr 2</td> </tr> <tr> <td><input type="checkbox"/> Spring CW/Dig . . . . .</td> <td>May 5-6 . . . . .</td> <td>May 21</td> </tr> <tr> <td><input type="checkbox"/> Summer Phone . . . . .</td> <td>Aug 4-5 . . . . .</td> <td>Aug 20</td> </tr> <tr> <td><input type="checkbox"/> Sprint . . . . .</td> <td>Oct 10 . . . . .</td> <td>Oct 25</td> </tr> <tr> <td><input type="checkbox"/> Fall CW/Dig . . . . .</td> <td>Oct 27-28 . . . . .</td> <td>Nov 12</td> </tr> <tr> <td><input type="checkbox"/> Anniversary . . . . .</td> <td>Jan 1 - Dec 31 . . . . .</td> <td>Jan 15</td> </tr> </tbody> </table>		Contest	Postmark	<input type="checkbox"/> Winter Phone . . . . .	Feb 3-4 . . . . .	Feb 19	<input type="checkbox"/> Mobile Contest . . . . .	Mar 17 . . . . .	Apr 2	<input type="checkbox"/> Spring CW/Dig . . . . .	May 5-6 . . . . .	May 21	<input type="checkbox"/> Summer Phone . . . . .	Aug 4-5 . . . . .	Aug 20	<input type="checkbox"/> Sprint . . . . .	Oct 10 . . . . .	Oct 25	<input type="checkbox"/> Fall CW/Dig . . . . .	Oct 27-28 . . . . .	Nov 12	<input type="checkbox"/> Anniversary . . . . .	Jan 1 - Dec 31 . . . . .	Jan 15	<b>ENTRY TYPE</b> <input type="checkbox"/> <b>INDIVIDUAL</b> <input type="checkbox"/> <b>QRP</b> 10 watts or less Phone, 5 watts or less CW/Digital <input type="checkbox"/> <b>CLUB</b> Only for those operating as a Club Station. If operating under a Club call, please list all operators and their 10-10 numbers (if any) on the log.	<b>US Call Area (W0-W9) or ARRL DX Country you operated from</b>  <b>Chapter Assignment</b> (not valid for Sprint)
	Contest	Postmark																								
<input type="checkbox"/> Winter Phone . . . . .	Feb 3-4 . . . . .	Feb 19																								
<input type="checkbox"/> Mobile Contest . . . . .	Mar 17 . . . . .	Apr 2																								
<input type="checkbox"/> Spring CW/Dig . . . . .	May 5-6 . . . . .	May 21																								
<input type="checkbox"/> Summer Phone . . . . .	Aug 4-5 . . . . .	Aug 20																								
<input type="checkbox"/> Sprint . . . . .	Oct 10 . . . . .	Oct 25																								
<input type="checkbox"/> Fall CW/Dig . . . . .	Oct 27-28 . . . . .	Nov 12																								
<input type="checkbox"/> Anniversary . . . . .	Jan 1 - Dec 31 . . . . .	Jan 15																								
<b>Claimed Score:</b> Contacts WITH 10-10 Number: _____ x2= _____ Contacts WITHOUT 10-10 Number: _____ x1= _____ Total Contacts: _____ Total Pts _____ <p><i>NOTE: DUE TO MULTIPLIERS, THE MOBILE CONTEST WILL BE SCORED BY THE CONTEST MANAGER</i></p>																										

**MAILED ENTRIES:** All submissions must contain this cover sheet (or a reasonable facsimile), the log in UTC Date/Time order, and a Dupe Sheet (if more than 50 contacts) in callsign order or in grid format.

**Mail to: Steve Rasmussen NØWY, 312 N 6th Street, Plattsmouth NE 68048-1302, USA.**

**E-MAIL ENTRIES:** All submissions must be in straight text format and must additionally include all information from this cover sheet either in separate summary or as a summary at head of log. Dupe sheet is **not** required with an e-mail entry. **E-Mail to: tentencontest@alltel.net**

[www.ten-ten.org](http://www.ten-ten.org)

[www.10-10.org](http://www.10-10.org)

electronic version of this issue at [www.lingerinc.com](http://www.lingerinc.com) - logon SpringNews - password April2007 (case sensitive)

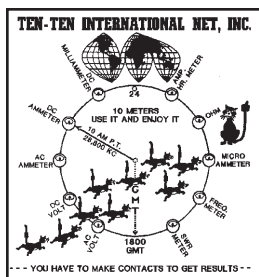
**10-10 International Net, Inc.**  
**PMB 142**  
**643 N 98th Street**  
**Omaha, NE 68114-2342**

**TIME TO RENEW? EXPIRATION DATE IS  
ON MAILING LABEL BELOW**

**FIRST CLASS**

PRE-SORTED  
 FIRST-CLASS MAIL  
 U.S. POSTAGE  
 PAID  
 OMAHA, NE  
 PERMIT 1799

*Address Services Requested*



**APRIL 2007  
(SPRING)**