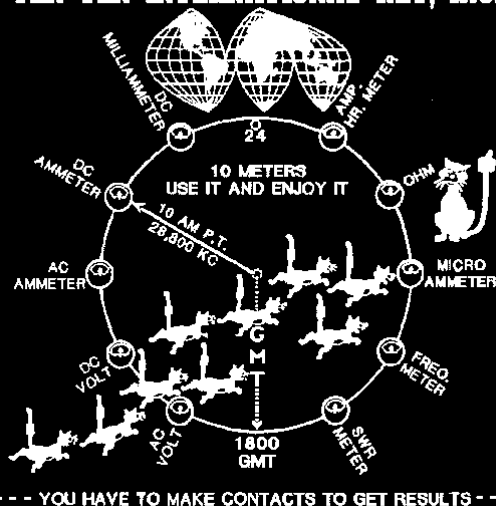


NEWS

TEN-TEN INTERNATIONAL NET, INC.



TEN-TEN INTERNATIONAL

VOLUME 47 ISSUE 3

\$1.50

JULY 2009 (SUMMER)

Gateway Chapter



Field Day 2009
Pages 18,19

DAILY NETS
1800Z
28.380 AND 28.800

www.ten-ten.org

IN THIS ISSUE

| | |
|--|----------|
| An-Ten-Ten-nas..... | 7 |
| Award Listing..... | 23 |
| Award Managers..... | 24 |
| Chapter Managers Column..... | 9 |
| DX News | 11 |
| New Life Members | 5 |
| Meet The Volunteers | 21 |
| Membership Application..... | 31 |
| Membership Information Services..... | 30 |
| Net Guide | 29 |
| Net News | 22 |
| Officers, Directors and Net Officials..... | 2 |
| President's Report..... | 4 |
| QSO Party Sheet..... | 32 |
| QSO Party Results | 25,26,27 |
| Quarterly Net Report | 22 |
| Scholarship Application Information..... | 21 |
| Scholarship Foundation Supporters | 20 |
| Silent Keys | 14 |
| W6OI On The Air | 24 |

The 10-10 International News

Is published four times annually by the TEN-TEN INTERNATIONAL NET, INC.
Publication dates are approximately mid January, April, July and October.

Each paid-up member will receive a copy. This is an independent publication.
Permission to reprint is hereby granted, providing suitable credit is shown.

News items should be sent to the Editor. Technical articles and information on all 10 meter activities or news are welcome and solicited. All copy submitted must be typed, sent on computer disk or E-mail. Suitable formats will be provided upon request.

Photographs are encouraged. Black and White or Color are acceptable. Include complete information on the back of each photo. Attach a label or other suitable paper to the back of the photo and write all information on the label, not the photo. If sending digital images, high resolution of a minimum 300 dpi must be used. Please do not send newspaper or digitally printed photos as they cannot be used.

Please mail all articles and photos to:

EDITOR 10-10 News

Paul N. Riedel, K10SR #8861

18 Battersea Ct. O Fallon MO 63366

E-mail: pnriedel@charter.net

10-10 CHAPTER ACTIVITY REPORTS should be sent to the Chapter Coordinator

ADDRESS CHANGES: All members should send address changes to the Data Manager

NOTE: 10-10 IS NOT RESPONSIBLE FOR POSTAL SERVICE DIFFICULTIES

DEADLINE FOR NEXT ISSUE: 1 September 2009



Member

AMATEUR RADIO NEWS SERVICE

OFFICERS, DIRECTORS AND NET OFFICIALS

Award Managers listed on page 24 - Membership Information listed on pages 30-31

President

Gerry Gross, WA6POZ #21274 (2010)
16046 Orchard Cir., Omaha, NE 68135-1068
(402) 895-7367 wa6poz@ten-ten.org

Past President

Chuck Imsande, W6YLJ #19636 (2010)
20815 Desert Sands Dr., Sun City West, AZ 85375-5443
(623) 214-8788 chuck@w6ylj.com

Vice President

Larry Berger, WA2SUH #00407 (2010)
9 Nancy Blvd., Merrick, NY 11566-3119
(516) 223-4611 wa2suh@aol.com

Secretary

Sandy Glenn, W7SSG #74633 (2010)
PO Box 451, Trout Lake, WA 98650-0451
(509) 395-2774 ssglenn52@hotmail.com

Treasurer

Keith Schlottman, KR7RK #63324
9581 E. Calle Cascada, Tucson, AZ 85715-5819
(520) 290-5883 keith@schlottmanpcpa.com

Directors

Robert L. Farrow, N6OPR #45715 (2012)
14814 Gagely Dr., La Mirada, CA 90638-2116
(562) 944-9040 N6OPR@msn.com

Ken Harmon, K1IEQ #31363 (2010)
471 Turnpike Rd, Mason, NH 03048-4722
(603) 878-1887 K1IEQ@juno.com

Rob Ireland, VE9KM #69811 (2012)
31 St James Street, Sackville, NB 4L7 Canada
(506) 536-1038 rireland@mta.ca

Leslie Johnson, WA4EEZ #15675 (2012)
6601 Bougainville Ave. S, St. Petersburg, FL 33707-2213
(727) 347-7422 wa4eez@arrl.net

Brad Kimble, K0DBK #55192 (2010)
3855 66th St. E, Inver Grove Hgts, MN 55076-2222
(651) 450-1173 k0dbk@ten-ten.org

Jack Moore, K5CC #50708 (2010)
371 Ridge Creek Lane, Bulverde, TX 78163-2871
(830) 885-2194 k5cc@ten-ten.org

Cliff Taylor, K5FBS #48461 (2010)
22707 Red Mountain Dr., Elmendorf, TX 78112-6034
(210) 621-2652 k5fbs@yahoo.com

Mel Sojka, KD5DE #33513 (2012)
353 Atlantic Ave., Shreveport, LA 71105-2909
(318) 861-7012 kd5de@ten-ten.org

Certificate Manager

Ruth Bartholomew, N0KDB #48715
1043 Franklin Court, Sullivan, MO 63080-5502
(573) 468-2898 or (314) 479-5474 n0kdb@fidnet.com

Chapter Coordinator

Cliff Taylor, K5FBS #48461
22707 Red Mountain Dr., Elmendorf, TX 78112-6034
(210) 621-2652 k5fbs@yahoo.com

Data Manager / Supplies

Data Manager, 10-10 International Net., Inc.
PMB 142, 643 N 98th Street, Omaha, NE 68114-2342
(402) 895-7367 wa6poz@ten-ten.org

Editor 10-10 International News

Paul N. Riedel, K10SR #8861
18 Battersea Ct., O'Fallon, MO 63366-1156
(636) 281-9301 pnriedel@charter.net

General Counsel

Dave Splitt, KE3VV #69831
6111 Utah Avenue NW, Washington, DC 20015-2461
..... davidsplitt@erols.com

Net Manager

Robert L. Farrow, N6OPR #45715
14814 Gagely Dr., La Mirada, CA 90638-2116
(562) 944-9040 N6OPR@msn.com

QSL Bureau Manager

Terry Webb, N0TW, #36547
1103 Fulford Road Monticello, FL 32344-4352
(614) 216-5334 n0tw@dishmail.net

QSO Party Manager

Dan Morris, KZ3T #41015
131 Valencia Lane, Statesville, NC 28625
(828) 728-5049 dbm72941mo@roadrunner.com

Scholarship Manager

Larry Berger, WA2SUH #00407
9 Nancy Blvd., Merrick, NY 11566-3119
(516) 223-4611 wa2suh@ten-ten.org

SK Manager

Ruth Bartholomew, N0KDB #48715
1043 Franklin Court, Sullivan, MO 63080-5502
(573) 468-2898 or (314) 479-5474 n0kdb@fidnet.com

W6OI Station Trustee

Jack Moore, K5CC #50708
371 Ridge Creek Lane, Bulverde, TX 78163
(830) 885-2194 k5cc@ten-ten.org

Webmaster

Darwin Piatt, W9HZC #73090
10532 Larimore Circle, Omaha, NE 68134
(402) 991-0412 dw-piatt@cox.net

News & Views

Paul N. Riedel, KI0SR #8861
EDITOR 10-10 NEWS



Just a reminder my E-mail address has changed from pnriedel@earthlink.net to pnriedel@charter.net. Please take note as I am still receiveing mail at my old address.

I am working on getting the NEWS in full color for the web but so far I am having a problem with the version that goes to the printer and the version that will appear on the web. Maybe the October web issue will be in full color. Thanks for your understanding.

I spent Field Day with the members of the Gateway Chapter at Fox Hill Park in St. Charles, Mo. Photos of the event are on pages 18,19 of this issue. Thanks to William Eggelston, N0WM #2724 for the invite and organizing the event.

I am off to the Convention hope to see you there.

73 Paul



Taken in Tokyo by Michael Bronstein, K6UMO, #75090



Taken by Brian Zdan, KM0Y, #74640 on Interstate 44 between Springfield and Joplin, MO

10-10 NET CONTROL STATIONS

ALL NETS BEGIN AT 1800Z

| | |
|--------------------|----------------------|
| Monday (28.380) | Dick, K6PZE #01341 |
| Monday (28.800) | Doc, WB6OJB #70675 |
| Tuesday (28.380) | Brian, KC7OC #67668 |
| Tuesday (28.800) | Bob, K4QHH #26040 |
| Wednesday (28.380) | Chris, N7PVL #58018 |
| Wednesday (28.800) | Louise, N6ELK #36654 |
| Thursday (28.380) | Bob, N6OPR #45715 |
| Thursday (28.800) | Robert, KQ4PK #63201 |
| Friday (28.380) | Bill, KB9MJ #22313 |
| Friday (28.800) | Tom, KA9EKG #70731 |
| Saturday (28.380) | John, NS2M #72143 |
| Saturday (28.800) | Al, W6JNU #40127 |
| Sunday | "NEVER ON SUNDAY" |

| | |
|--------------------------|----------------------|
| Alternate Net Controller | Dan, KC8IM #31959 |
| Alternate Net Controller | Steve, KB3KTR #74187 |
| Alternate Net Controller | Ann, KE6OIO #68997 |
| Alternate Net Controller | Earl, KA6RFB #59088 |



Ralph, K1EK, #36200 and friend Myrt. Taken at his 95th Birthday Party. Ralph hosts a monthly luncheon at a local restaurant in Pasco County Florida for local 10-10'ers and interested hams and their spouses



From the office of the
PRESIDENT
10-10
International

Gerry Gross
WA6POZ #21274

Writing for WorldRadio or for the 10-10 NEWS is not an easy task for me: I usually am looking for subject matter right up until the deadline. It is true this time as well.

I was browsing the Ten-Ten web site, specifically the forum, and I gravitated to the subject of the 2009 Board Meeting which is coming up as this issue is being published. While I have always tried to stay away from controversy and don't editorialize, this issue will be different.

What is a valid Ten-Ten Contact?

When Ten-Ten was founded in the early 1960s the only modes available were CW and AM. The goal of Ten-Ten was to promote and document activity on the 10 Meter Amateur Band. The definition of a legal Ten-Ten contact was:

A legal Ten-Ten contact must be a two way contact exclusively on ten meters. A legal contact consists of the call sign, 10-10 number, name, date of contact, and QTH.

Exclusively on ten meters meant that Ten-Ten numbers were not to be exchanged on other amateur bands. QTH was defined as city and state or country. This was later changed to only the state or country to facilitate QSOs made during parties or contests. Also added was 'At no time is it acceptable for a 10-10 number to be relayed via a third party'. The early Bar, VP, WAS, and the Lucky 13 Awards were designed as a means of documenting activity across the entire 10 meter spectrum. Time passes and change does happen. In 1971 the SSB net was almost cancelled due to lack of activity on that mode. Single Side Band, FM, repeaters, Satellites, RTTY and then the many digital modes, came into play. Computers and the innovations within them, Software Defined Radios,

Blue Tooth devices, and yes even Remote Bases are around us today, but not yesterday. What's to come in the future? We don't know.

Two changes were made by the Board last year, because that basic definition WAS broken. More than twenty-five years ago the term 'Parking Lot Net' was coined to define a process of handling a net when, because of the number of members present, an actual two way exchange of information was not practical. As an example, if there were 120 stations in the net, it would require 7200 separate contacts, and if 6 contacts were made each minute it would take 20 hours to complete the net. So the definition of what a 'Parking Lot Net' was added. See Section 13.1.2.2 of the Operations Manual.

The second change was to broaden the scope of what defined a valid contact. The word 'exclusively' was being defined rigidly; contacts using wireless devices and/or repeaters were being considered as invalid. Many technological innovations not around in the 1960's were being challenged. Wording was also added to also allow for remote base contacts. Some object to this legal form of operation or wish to limit it to remote bases that are owned by individuals rather than clubs. If the club has a station and an operator wishes to use his call rather than the clubs, this is legal in the US: how is Ten-Ten to know? For contacts the QTH is the location of the antenna. No award program is affected by this type of operation. The change passed but the Board was not in total agreement, and it may need further refinements. Now I think a better revision would have been to remove the word 'exclusive' and rephrase the first sentence. Also, add an additional phrase at the end of the first sentence so that it reads:

A legal Ten-Ten contact must be a two way contact where the transmitting and receiving stations are on ten meters. A legal contact consists of the call sign, 10-10 number, name, date of contact, and QTH, using any legally defined mode.

If we are to represent the best interests for all of 10 meters, all modes and all innovations now and in

the future should be included. We cannot become restrictive because of technological limitations or innovations; otherwise, we no longer promote all of 10 meters.

I also noted that there was a comment to limit the use of computers. I am not sure how they are or can be limited. Are they to be forbidden to assist with Ten-Ten contacts? We can ask the Win1010, WM7D, BuckMasters, MicroLog, to remove the Ten-Ten number. I can stop the production of WinIQ, XXIP, and remove the Ten-Ten Lookup from the Ten-Ten web, but do we really want to? We can go further and not allow computer aided software output for Ten-Ten QSO Parties and Awards. All must be hand written or TYPED, if you can find a typewriter! We could do away with the Digital Awards programs, as some of the digital mode are computer assisted. Contacts made using Software Defined Radios would not be allowed to be valid. We could also disqualify members who used a computer aide to fill out their application and/or awards or QSO Party logs. Simply said, is any of this practical?

Most of the other items on the 2009 Board Agenda which can be found on the Ten-ten web, should not present the challenge as does 'What is a Valid Contact'. I am but one individual on the Board and I do not vote unless there is a tie. I might add that while I have attended most Board meetings since 1978, the only time I was allowed to vote was between 1980 and 1993 when I served as the Ten-Ten Treasurer.

I am also going to respond to several of the questions raised in the 2009 Board meeting forum.

Several asked why clubs don't vote. At the time this was discussed there was one major reason as to not allowing clubs the vote; how to ensure the vote cast reflected the will of the majority of the members of the club and how to validate the validity of a club. Basically the Board did not want to create a system whereby those individuals who had control of club membership had multiple votes.

Another question was why not lower the dues for members who receive the 10-10 NEWS electronically. This has been brought before the Board several times in the past. It is felt that the NEWS is the means of communicating with the majority of members. For many reasons, whether being sent via the post or electronically, the NEWS can fail to reach its destination. When this happens there are procedures in place to determine a new email or mailing address. Only after several attempts is the process halted and the membership record denoted that repeated attempts to locate have failed. If dues were lowered for those receiving the NEWS electronically this process would stop for those members as it is very expensive.

10-10 Data Manager To retire by the end of 2010

It was communicated to the Board that the Data Manager wishes to step down from this position no later than December 31, 2010. Gerry's wife, Linda, KA6SPS, #69700, will retire sometime in 2010 and they will probably move from Omaha, Nebraska to Tallahassee, Florida to be closer to their daughter and family. This move would necessitate a major change to the operation of Ten-Ten and it seemed like a good time to retire as Data Manager. A committee comprised of Vice President Larry Berger, WA2SUH, #407, Treasurer, Keith Schlottman, KR7RK, #63324 and Gerry will determine the best way to support this function in the future and make recommendations to the Board.

New Life Members

| | | |
|-------|--------|-------------------------|
| 34524 | E4ERM | Burt A. Vander Clute II |
| 41344 | KA8OFP | Charles E. Curtis |
| 52282 | KG5WN | Thomas W. Shaw |
| 63114 | AB6OM | Mel F. Nunes |
| 69079 | K0GOB | Roger H. Volk |
| 74371 | K0SQS | Harold A. Schelin, Jr. |

HAMPLAQUES



HamPlaques is pleased to supply Amateur Radio Call Sign Plaques a/k/a Ham Plaques to Amateur Radio Operators for proud display in their homes and Ham Shacks - Ham Plaques are made of solid, select hardwood. The normal time from ordering to you receiving your HamPlaque is 3-4 weeks.

The Ten-Ten membership plaque is 7 X 7 inches and cost is \$40. The Ten-Ten Life membership plaque is 7 X 8 inches and cost \$45.

Shipping is \$8.95 per Ham Plaque anywhere in the 48 contiguous U.S. states. Standard shipping to Alaska, Hawaii and U. S. Territories is \$18.95 per Ham Plaque.

FREE GROUND SHIPPING anywhere in the contiguous 48 US states on 2 or more plaques. Shipping outside the US depends upon location. An email invoice for the actual cost of shipping will be sent when the plaque goes into production.

You will be also notified via email when your Ham Plaque is shipped and you will be provided a tracking number.

If you are not satisfied with your Ham Plaque, you may return it within 30 days for either a replacement or a full refund, including shipping.

HamPlaques are made by Bill Stoltz, K5YRT of Pearl River, LA. Bill is not yet a ten-ten member but he is working on it.

For more information please visit the web site www.hamplaques.com or send an email to info@hamplaques.com.



Radiowavz

We make your radio sound good!!

10 Antennas for 10 Meters

| | |
|-----------------------------|-----------------------|
| 1: Dipole | 6: OCFD Windom |
| 2: Double Bazooka | 7: Colinear |
| 3: End Fed Half Wave | 8: SATURN |
| 4: Loop | 9: Jpole |
| 5: MOXON | 10: Custom |

607 Blue Cove Terrace, Lake Saint Louis, MO. 63367
(636) 265-0448 Fax# (866) 201-0593

www.radiowavz.com

An-Ten-Ten-nas

INFORMATION To help you decide On the best Antenna for you

L. B. Cebik SK
W4RNL #41159



In each issue of the News, we shall try to clarify a significant cluster of ideas in antenna work. Our object is to help you make the best decisions about the antennas you buy or build without imposing our own prejudices on you. The more you understand, the better your choices will be.

An Improved Hilltopper Portable Dipole

Every 5 years or so, I return to the simple dipole as a hilltopper antenna. As the weather improves and the sunspots are kind, 10-meter operators get an urge to drive up to a handy hilltop, set up an antenna with a bit better performance than a mobile whip, and see who in the world they can contact. Over the years, my own favorite design keeps evolving. In No. 42 of this series, I presented a collapsible antenna that used hitchpin clips to hold sections in place. However, the center plate that connected the element to the mast was a bit heavier than I prefer, since it used small U-bolts. As well, each element section was 3' long.

In this episode, we shall update the 10-meter hilltopping dipole in two ways. One is by reducing each element section to 2'. The second update is the addition to my collection of favorite portable antenna hardware: the spring tool clip. **Fig. 1** shows both of these handy devices.

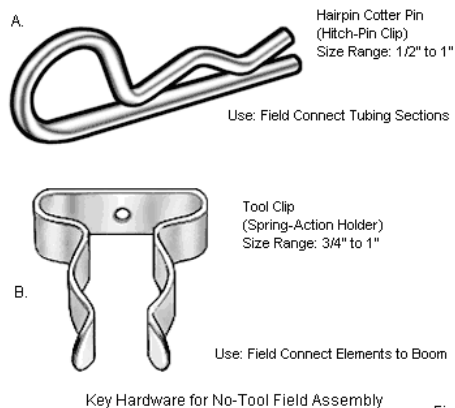
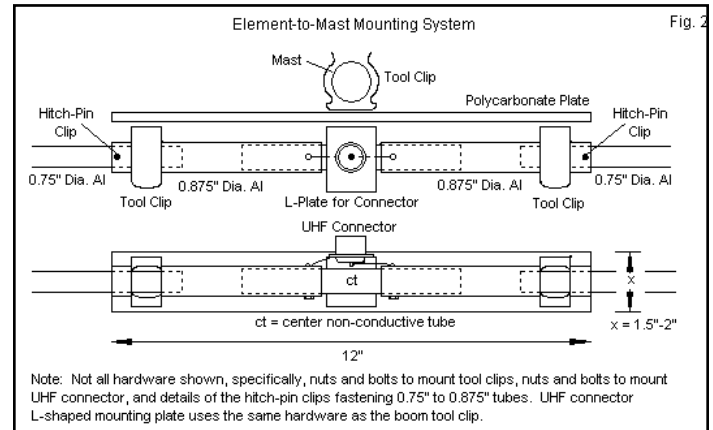


Fig. 1

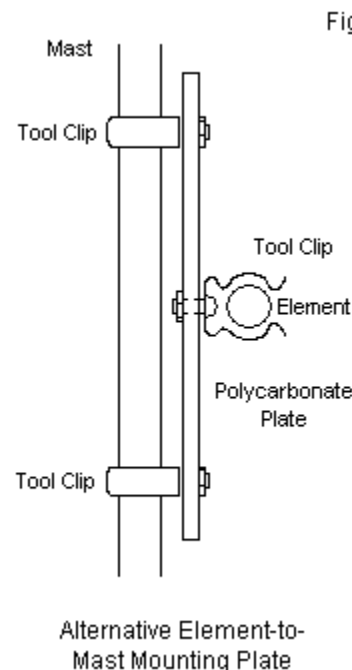
Although there are some nuts and bolts (and lock washers) involved in the project, they are permanent. In the field, we shall use the hitchpin clip and the tool holder to assemble the antenna. In fact, the hitchpin clips will also hold the two element halves in their collapsed storage condition.

The spring tool holders play their biggest role in attaching the dipole element center to the mast. **Fig. 2** shows the general scheme. Instead of U-bolts to hold the plate to the mast, a single tool clip does the job. Attached the tool holder and the small L-shaped plate for the coax connector with a single nut, bolt, and lock washer to the insulated plate.

(Polycarbonate is my favorite plate material, since you can cut, drill, and shape it with normal woodworking tools.) When you first see the tool clip, the back part with the bolthole will be arches, and the curved sides will be far apart. As you tighten the bolt, the back side will flatten and the holder arches will come together to create a tight grip. A single tool clip is more than enough support for the single dipole element.



The diagram also provides the outline of the coax connection. The exact size of the gap is unimportant, since the leads to the connector become part of the element. Relative to the mast, orient the connector downward so that you can run the coax straight down the mast, holding it in place with a few strips of disposable electrical tape. A piece of CPVC or similar insulating tubing goes inside the center section of the element (7/8" diameter) tubing. The inner tube holds the element in alignment. Note that I used two more tool clips to hold the element to the plate.

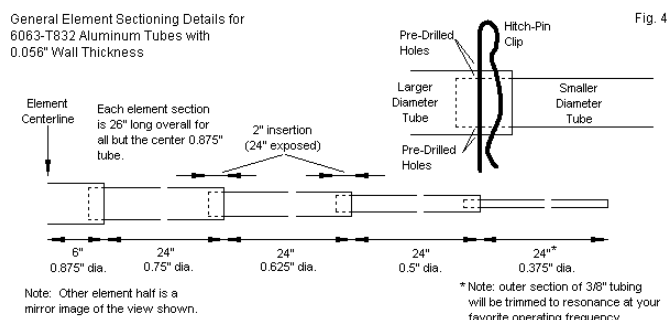


The single tool clip has sufficient strength to hold the element securely. However, if you are concerned about slippage, you may widen the plate and use a pair of clips for the mast, as shown in **Fig. 3**. The simplified sketch omits most of the element information shown in **Fig. 2**.

Combined with the hitchpin clips, the tool clips allow you to go into the field with no tools whatsoever. If you check all of the nut-and-bolt connections prior to departure, you should have no use for wrenches, pliers, and screwdrivers. (However, a toolkit in the vehicle is a good safety measure for all kinds of unanticipated needs.)

This version of the antenna uses 26" sections of tubing to shorten the storage bundle for the antenna. **Fig. 4** shows the general layout of the element—actually, half the element, since the other half is identical. 26" lengths of tubing allow for a 2" insertion of each smaller size into the next larger one. With a shop jig, drill holes through both tubes at the junction. Make them just large enough to handle the hitchpin clips. The compression of the clip will ensure a good physical hold and good electrical contact between sections. Remember: this technique is perfectly adequate for several days of operation. However, do not use it for the permanent home antenna, since eventually, the quality of the electrical contact will degrade. Home antennas need good metal biting fasteners to endure years of weathering.

General Element Sectioning Details for
6063-T832 Aluminum Tubes with
0.056" Wall Thickness



The sections of tubing begin with a short length of 7/8" diameter and proceed in 1/8" increments down to 3/8" tubing at the outer ends. I recommend that you incest in 6063-T832 tubing from a mail order or web source (such as Texas Towers) to ensure a snug but smooth fit between sections. As well, the 6063 material is designed for antenna use. Local home centers—if they have any tubing—may carry thinner walled material that does not have the same hardness of 6063. Even though receiving tubing in the mail may take longer than a trip to the home center, the end result will be a more durable antenna that will serve you for many sunspot cycles to come.

The outer tubing section should be trimmed and drilled only after raising the antenna in the yard and finding the correct length for the lowest SWR in the part of the band you like best. The SWR curve should be acceptable all across the first MHz of 10 meters, so the dimension is not critical, and 102" per dipole side should be close to correct.

To assemble the antenna, simply extend the element sections and insert hitchpin clips into the proper holes. I

recommend that you tie a brightly colored ribbon to the loop of each clip. If you drop a clip in tall grass, you can easily find it, and ribbons will not affect RF performance. They will indicate when the winds have become strong enough to indicate that it is time to return home.

To disassemble the antenna, simply remove the hitchpin clips. You can nest the element section and use a single large clip to connect them all together. Then you will have only 4 pieces to the storage package: 2 half elements, a center plate, and a sack or string of hitchpin clips (with extras, of course). You can sew up a small drawstring bag from an old towel to hold the pieces all together in the trunk of almost any vehicle, no matter how small.

The mast I shall leave up to you. You might consider section of Schedule 40 PVC tubing. I prefer to use such tubing in fairly short sections with a straight coupler piece cemented to one end. Then I can simply press-fit section together until I reach the desired height. Using several sections rather than a single long piece tends to make the mast somewhat stiffer. As well, shorter section fit into the trunk better without getting in the way of the picnic lunch. I also connect 3 ropes near the top and use them as guys. Tent pegs or similar stakes make a system that is easy to set up and take down, but one that withstands fairly good breezes. I also tie bright ribbons to the guys to make sure that I do not inadvertently trip over one and bring down the entire antenna.

The ideas here create an antenna system that you can set up in 5 to 7 minutes and take down in a similar length of time. At home, it is always good practice to clean the antenna sections after each use to ensure that they slide smoothly in each other. (Do not use any lubrication, since it will degrade the electrical contact between sections. Even lubricants design to improve electrical contact will dry over time and inhibit sliding. Cleanliness is the best practice.) Use nothing harsher than a plastic scrubbing sponge to remove any dirt. Finally, always check the antenna package for smooth operation and for having all of the parts before setting out on a hilltopping expedition.

This package is for me the Mark 4 version of the hilltopping dipole. If I run across any more good hardware that will simplify a portable antenna without adding weight or reducing the quality of the antenna, I'll report on it here.

Incidentally, this episode completes the 16th year of the An-Ten-Ten-nas series.

CHAPTER MANAGER'S COLUMN

By Cliff Taylor K5FBS #48461



General Comments:

If you haven't tried it yet, the on-line quarterly report works just fine. On the 10-10 website, click on RESOURCES, then FORMS, and, finally, ON-LINE QUARTERLY REPORT. The USER ID is the word report, but you will have to ask me for the password.

As most of you well know, conditions on the 10-meter band continue to improve. I've manage to catch a couple of chapter nets that I haven't been able to in a long time. As for the Chapter Net Guide, shown on another page of this newsletter, I try to keep it as current as possible.

Mel, KD5DE, and I have decided that changes to chapter related sections of the 10-10 website would be sent to him on the 1st and 15th of each month. To catch these changes, just check the website out after these two dates.

Planned specials or worksheets beginning during the period July 1 through October 2009, should be reported to me before the 1st of September 2009, so that I can announce them in the October 2009 **Ten-Ten International News**, (Note: This is primarily for those without email capability.)

As I mentioned earlier, changes to the chapter related sections of the 10-10 website periodically. If you send an upgrade to a chapter and it isn't answered within a reasonable amount of time, check the "10-10 Chapters" section to see if the CH or CM has changed their email address. If no change is shown, just drop me an email and, I will give you the latest that I have on that chapter.

I am looking for short chapter histories to list here in my column when I have space left. I know that most of you have your chapters on-line and have the link to your chapter in the "Chapter Links" section. I know that the paper-chasers are quite familiar with this section, but listing a short history of your chapter in this column would be for the membership at large.

The 10-10 Convention Manager, K1IEQ, has been encouraging chapter heads and chapter certificate managers as possible to attend and have a table at the Orlando Convention.

If you are the responsible chapter official who is charged with submitting the quarterly report, and your report is delinquent, please submit one as soon as possible. If I haven't heard from you in quite a while, I will be working with the Chapter Relations Committee after the convention on complying with 10-10 directives and dropping your chapter from the affiliated roles.

Now that conditions are improving, now would be a good time to check your certificate list and remove those chapters that are no longer affiliated or seals that are no longer used in

the chapter's certificate program. The complete list of current active chapters and valid seals can be found on K4HAV's website. The website can be accessed by searching on WIN1010DL.

Chapters with Delinquent Quarterly Reports

Dates Listed are Dates of Last Submitted Report:

(July 2006) Borinage; (March 2007) Busy Bee; Crazy Eight; (January 2008) Bauxite; Concho Valley; Elmer J. Fudd Net; Laurel Mancunium/Roman Invasion/Emperors/Millennium VIP; Major League Baseball; (February 2008) 10-Bar-X; All American City; (March 2008) Edmonton Area 10-10ers/City of Champions; Milwaukee; Neanderthal; Pine State; (May 2008) Tango; (June 2008) Alii

As a reminder, here are the reports that are due during July to October: (July 2008) Oklahoma Route 66; Palmetto; (August 2008) Castle Craig; Lonestar; (September 2008) Channel Islands; City of Melbourne; Down Under; Southwest Florida Moonshine; (October 2008) Gold City; Lilac City; New Mexico Mud Ducks; Red River; Sky Blue Water/Tin Lizzie

Chapter News

Alli: Word finds are still available from the chapter correspondent, NH6SJ.

Branding Iron: The new email address for the CH/CM is ka5vvd@embarqmail.net .

City of Roses: The new CH/CM for this chapter is K7PRZ, Dave Becker, P O Box 5933, Portland, OR 97228; email – k7prz@isp.com . The Saturday net for this chapter and the Portland Bridges has been dropped for the time being. The net is now called on Tuesday at 0230 UTC Summer and 0330 UTC Winter.

Colorado Quartermaster: The CH/CM is having medical problems but is still trying to get out the upgrade applications that he has as soon as possible. He is still trying to operate AS NORMAL but pain precludes it.

Cow town – The CH's new email address is jhsoliday@yahoo.com

Cypress – The new CH for the chapter is: KR4OW, David Nachbaur, 26722 Pelican St., Eustis, FL 32808; Email – kr4ow@cypresschapter.org

Gateway: The long time secretary/treasurer of the chapter, Robert W. Bloemker, 10-10 # 8092, is no longer active. He is now in a nursing home and his license has expired.

Margarita & Martini – The CM is: WD4ABO, Raleigh A. Morgan, Jr., 539 Wyatt Rd., Canton, GA 30115; Email – wd4abo@bellsouth.net. The chapter has a brand new domain web address at www.mmchapter.org. This is a direct access to the website.

Major League Baseball – The email address of rlfarrow@catalina-inter.net is no longer valid leaving the address of n6opr@msn.com as the one to be used.

Fort McHenry/Cornerstone: During the month of July, collect Fort McHenry Defender numbers for 1 point each, and collect Cornerstone Barracks numbers for 5 points each. During the month of October, collect Fort McHenry Omaha

numbers for 1 point each and collect Cornerstone Recruit numbers for 5 points each. Upgrades to the CM are due by the last day of the subsequent month – also, postmark on snail mail must be no later than this date.

Peshtigo Fire: Jake, W9BLI, is taking over the upgrading for the chapter. At the present time, however, he has a busy work schedule and is on duty for 12 hours. Please hold off on sending upgrades for the time being. He hopes to be able to do those upgrades that he has as soon as work requirements alleviate.

Portland Bridges: The new CH/CM for the chapter is: K7PRZ, Dave Becker, P O Box 5933, Portland, OR 97228; Email – k7prz@isp.com

Restoration Project: The CM's new email address is ve7ssj@n8st.com

Steel City: Here are the specials for the months of July thru October: 1) July – net check-in worth 10 point; 2) August – Net check-in worth 5 point; 3) September - Work and log as many different Steel City states as you can for a 5 point bonus for each one.

Chapters that Accept Upgrades Via Email (As of 6 September 2006)

All of the listed chapters generally need previous, new, and total points and seals claimed. Any transaction with the CM that requires that a certificate be issued, and most worksheet specials, should still be handled via US Mail. Also to be on the safe side, a detailed listing of the upgrade should be kept in the event that the CM should require verification. Requirements peculiar to a particular chapter are noted below.

(* indicates change)

Alii - CM WH6S, wh6s@hawaii.rr.com. Use form available from the CM.

Battle Road - CM K1IEQ, k1ieq@juno.com

Bauxite - CM K5BKT, k5bkt@nwla.com - Bauxite and Arkansas Visitor #'s only

Bay Area - CM K6RDK (All except for Bay of Bridges), k6rdk@smm.com

CM AC6FU, ac6fu@sbcglobal.net or ac6fu@arri.net (Bay of Bridges)

Boomtown - CM N5EBA, ed_cisse_neal@yahoo.com

Bounty Hunters & Outlaws on Ten - CM WD5EDR, bill@att.net

Borinage - CH/CM ON4CN, claud@on4cn.org

***Branding Iron - CM KA5VVD**, ka5vvd@embarqmail.com

Branding Iron II - CM N5SCA, n5sca@sbcglobal.net

Busy Bee - CM kc5qcb@suddenlink.net

Castle Craig & Castle Craig Plus- CM N1API, n1api@cox.net

Chesapeake Bay: CM N3TGB, n3tgb2@aol.com

***City of Roses & Portland Bridges - CM K7PRZ**, k7prz@isp.com

Colorado Centennial, Colorado Frontier Gang/Centurion/ Golden Aspen- CM WB0CON, wb0con@comcast.net

Colorado Quarter-Master - CM KC0CMZ, kc0cmz@msn.com

Cradle of the Confederacy - CM K4PO, k4po@charter.net

Cypress: CM KK3Q, cq1010@cypresschapter.org

Electric City - CM WA2OIZ, istillwell@cfl.rr.com

Fort McHenry, Cornerstone & Yodar Kritch - CM K3TUI, k3tuj@juno.com

GB Ten - CM G4KHF, gbten@globalnet.co.uk

Gold City: CM KD5DE, kd5de@nwla.com

Houston S.H.O.T. - CM N5AFV, afmattis@hal-pc.org

Kansas Trails - CM KB6UPG, kb6upg@mchsi.com

Keystone & Keystone Stars - CM KA6GPC, ka6gpc@aol.com

Laurel Mancunium/Emperors/Roman Invasion - CM G3RRM, g3rrm@aol.com

***Margarita & Martini - WD4ABO**, wd4abo@bellsouth.net

Major League Baseball - CM N6OPR, n6opr@msn.com

Millennium VIP: CM G4PDR, g4pdr@fsmail.net

Minuteman & Old Ironsides - CM WA1ENO, wa1eno@hotmail.com

Neanderthal - CM CM DK4QO, dk4qo@t-online.de

New Mexico Mud Ducks - CM KM5EH, buckml@lobo.net

New Waterkant - CM DK7LA, dk7la@t-online.de

North Georgia - CM W4GKF, 10x@w4gkf.com

Oregon Trailblazer - CM KD7FZY, ckckd7fzy@webtv.net

Palmetto: CM NJ4F, nj4f@arri.net

Portland 500 - CM W7HO, portland500@portland500..com or w7ho@arri.net

Republic of Texas - CM WD8JKV, rmoyer@netbsa.org

***Restoration Project & Feline Friends - CM VE7ACM**, ve7ssj@n8st.com

Route-66 - CM KA9ADD, ka9add@wowway.com

Sky Blue Waters & Tin Lizzie - CM KA0ZIA, skybluwaters@q.com. Also submit total contacts, basic numbers with current point value, 10-10 number with date of expiration.

Santa Fe Trail: CM KA9PCU, ka9pcu1@juno.com.

South Texas Lighthouse Brigade - CM N5DAS, n5das@juno.com. also total contacts, and date of issue of original certificate. An upgrade form is available via email. Upgrades can be done on-line on the website.

Space Coast - CM K5FBS, k5fbs@yahoo.com

Springbok - CM (for all except Oceania, Asia) W4ZDY, w4zyd@springboknet.com or msteele@naxs.com; **CM (for Oceania, Asia) ZL3KR**, zl3kr@clear.net.nz

Steamboat Plus - CM KD5DE, kd5de@nwla.com

Steel City - CM KE9WZ, ke9wz@windstream.net

Southwest FL 10-meter Moonshine: w4dnn@arri.net

Trail Driver - CM N5SCA, n5sca@sbcglobal.net

Twin Cities - CM K0DBK, k0dbk@comcast.net

These addresses are as current as the information you provide. If there are any additions, corrections or deletions to this list please contact the Chapter Manager, K5FBS, Cliff Taylor via email at k5fbs@yahoo.com or via "snail" mail to 22707 Red Mountain Drive, Elmendorf, TX 78112-6034.



DX NEWS

Mike Davidson
N5MT #24949

The 2009 spring season was uneventful when it comes to working DX on ten meters. We have seen record low Solar Flux averages that have added extra low months to the bottom of cycle 23. We know that cycle 24 is starting because there are sun spots in the upper part of the sun just the opposite where cycle 23 spots formed. New cycle 24 sun spots have been few and far between, but recent activity in May could be an indication that cycle 24 is now starting. If the sun starts to produce more sun spots, the Solar Flux will start increasing, giving us better propagation which will allow us to work the DX.

NOAA and NASA scientists got together in May and prepared a new prediction for cycle 24. The resulting prediction is they expect the peak of cycle 24 to come in May 2013 with a decreased sun spot count. Remember, sun spots are disturbances or flares on the sun but Solar Flux is a reference number representing the ionization of the sun's energy here on Earth.

This past May we have seen an increase in the number of days that we have had a band opening even though the number of sun spots remains almost zero. But there have been more days with spots than in the first five months of 2009 which is a positive sign for cycle 24!

The last contest in May was the CQ WPX CW event and my friend Ken **G3XPO** #70614 actually made twelve DX contacts from Europe to the USA. So there was unexpected multi-hop propagation for the first time in months on ten meters! On June 9th, Paul **WN4AMO** #73825 is hearing PSK coming out of Europe and there appears to be a sun spot no. 1020 on the sun surface today!

I predict better propagation as we get closer to our winter DX season here in the USA. Normally, the solar flux needs to be above 80-85 for the USA to hear Europe on a regular basis and this is possible if cycle 24 starts to take off. The beginning of the fall contest's season is in October. Band conditions in October are a good benchmark to predict the winter DX season, so mark your calendar and hope for the best. The Ten Meter contest is the second weekend of December 12-13th.

Ken **G3XPO** #70614 had these comments: "10-10 members that I have worked in the past month include Mohamed **7X4AN** #33610, Tony **EA8AKN** #38382, Tony **T77C** 25981, Nodir **EY8MM** #52767, Boris **9A2GA** #71811, Hans **EA6/DL1KBQ** #70303, and Chris **TL0A** (ex-TZ9A and TT8DX) #45817, so there is often a good representation of 10-10 on the band here in Europe."

Countries Award: The number of basic certificates issued remains at 622. I had no Basic certificates and no upgrades this past quarter. Please, copy your QSL cards instead of

sending the originals to save postage and read the website before you send an application. Email any questions to me at N5MT@aol.com.

General 10-10 DX reported in the past quarter:

A6 United Arab Emirates. A new prefix A65 is now available for foreign residents in the U.A.E. Fred **G4BWP** #28684 has been issued to A65BD and QSL via G5LP. There are about six new A65 prefixes issued but only one is a 10-10 member, Fred **G4BWP/A65BD**.

BV China. Rene **DL2JRM** #69623, was active from Kinmen Island using call BW9/DL2JRM until May 3rd. He operates CW only.

C6 Bahamas Islands. Fred **K9VV** #8707, and three friends used call sign C6AKU during the WPX CW contest at the end of May. QSL via K5WW or LoTW.

C6 Bahamas. Craig **W5TSN** #45694 and friends, were active as C6AWC from Nassau Bahamas from June 1-14th. During a contest they used C6AMS from three stations. Web site at: <http://www.c6ams.com/>.

C9 Mozambique. Members of the Texas DX Society traveled to C9 from March 25th to April 5th using call sign C91TX. Operators: Paul **W5PF** #5921, Jim **N4AL** #21840, Bill **K5WAF** #73432, Cal **WF5W**, Madison **W5MJ**, and Dale **KG5U**.

EY Tajikistan. Nodir **EY8MM** #52767, Alex **EY8CQ** #39387 and friends were using call sign EY1WFF from a nature reserve from May 17-24th.

HH Haiti. Jan **HH4/K4QD** #13423 was active in Haiti between March 24th and April 4th. Jan was expected to be on CW, SSB and RTTY.

KG4 Guantanamo Bay. Dan **W0CN** #27026 was active as KG4CN from Guantanamo Bay from April 10- 20th. Dan operated SSB and some CW. LoTW is OK.

KP2 US Virgin Islands. Ann **KP2YL** #70464 and Brian **KP2HC**, may have gone back on St Croix from March 28th to April 7th.

KP2 US Virgin Islands. Ron **W3WN** #37499, Carl **K9CS** #40531 and others ops, were on the air from May 28th to June 2nd using call/KP2. During the CQ WPX CW Contest the group used NP2SH.

OA Peru. Rene **DL2JRM** #69623 and Daniel **DL5YWM**, went back to Peru in April. Rene used call OA4/DL2JRM mostly on CW. He hoped to take a side trip to Costa Rica and be part of the TI7 DXpedition.

PY0F Fernando de Noronha Island. Bill **W9VA** #2706 and Jim **K9PPY**, were active as PS0F March 3rd -10th using the station of Andre PY0FF.

V2 Antigua. Bob **W4OWY** #21678 (V25WY), and Mark **W9OP** #12879 (V25OP), were active from March 10th to 19th. Using LoTW.

YN Nicaragua. Eric **K9GY** #22330, was active as YN2GY until June 1st. Activity was on CW and SSB.

Upcoming DX & New 10-10 Activity:

3D Swaziland. Doc **WB6OJB** #70675, will be in Swaziland from September 3-8th. Call sign will be 3DA0JK. He always tries 10 Meters first but propagation has been bad. Last year he made 3 QSO's on 10 Meters. He will operate on 10 to 40

all on SSB. Last year he made 1600 QSO's in four days. Good luck Doc.

C6 Bahamas. C6APR will be in the IOTA contest in July from Crooked Island, Bahamas. The team is Ed **K3IXD** #8566, Dallas **W3PP** #37430, James **K4QO** #74374 and Peter W2GJ. C6APR will be on the WARC bands. The team will sign C6AXD on RTTY.

CY0 Sable Island. Starting October 19- 26th a group of ops will activate this island off the east coast of Canada. Randy **N0TG** #12990, Ron **AA4VK** #12423 and Murray WA4DAN will hand out contacts. Web page at: <http://www.cy0dxpedition.com>.

FP St. Pierre and Miquelon Islands. Tom **W8TOM** #74496 and ErickV1J #31247, are planning to return to St. Pierre and Miquelon in October. They will be active from Miquelon Island as FP/W8TOM from October 20th to 27th and they will have an amplifier to help the signal. They plan to use SSB, CW, RTTY and PSK. Web page at <http://www.kv1j.com/fp/october09.html>. Using LoTW.

HK0 San Andres Island. Dennis **K7BV** #5414 will be back at the same place he was last year in June where he will focus on 6 meters. Dennis will be there from June 18-29th with call 5J0BV on HF. He will put up a beacon on 50106.2 KHz running into an 8-element yagi. Dennis will be on HF with wire antennas in palm trees. The 5J0BV Web page is at: www.qth.com/k7bv/caribe2009.

LZ Bulgaria. Goshu **LZ1ZF** #38328, will participate with a special call sign LZ09BR and others during 2009. Website: <http://www.mustafakemalpasatrac.org/>.

OH0 Aland Islands. Marq **CT1BWW** #64689, will be active as OH0/CT1BWW from Aland Island from July 26th to August 6th. He will operate SSB, CW and RTTY. A trip to Market Reef might take place on August 1st. Website is: <http://www.geocities.com/oh0ct1bww>.

PZ Suriname. Mike **AJ9C** #41205, will be active from between October 22-29th. Call sign unknown at present. Mike is expected to be active on SSB, CW and RTTY.

V3 Belize. Terry **W6WTG** #49407 and Sharon N2OWL, will try to be on from Caye Caulker from July 22-29th. Call sign will be V31UR. Logs uploaded to LoTW. Website: <http://www.w6wtg.com>.

VE/VY2 Canada. Gregg **VE3ZZ** #38480 and friend Noel VE2BR will use call sign VY2TT from Prince Edward Island from July 15-27th. Gregg will sign VE3ZZ/VY2 when he is not in a contest.

VP2M Montserrat Island. John **KB4CRT** #41841, will be active as VP2MRT from Montserrat on June 11-21st. He should be on SSB, CW and PSK.

Miscellaneous Items & Notes:

9M2 Western Malaysia. Richard **PA0RRS** #24343, has decided to move to Western Malaysia. On May 1st his new home is Penang Island where he will sign 9M2MRS mostly CW. QSLs to Richard Smeets, Reef Apartment Building, 54-7-12 Jalan Low Yat, 11100 Batu Ferringhi, Penang Island, Malaysia or via the 9M2 bureau.

CT Portugal. Starting June 1st, new call signs will no longer be issued to CT or CU prefixes. They will use CR/CS/CT7

CR/CS/CT8 and CR/CS/CT9. New hams will have CQ0/CS5, CQ2/CS3, CQ1/CS4. Club stations and contest calls can get CQ0,1,2/CS5,4,3. Website: <http://www.anacom.pt/render.jsp?contentl>.

E5 South Cook Islands. Nigel **G4KIU** #36106, has moved to Rarotonga and has a new call **E51SC**. Nigel will operate SSB, RTTY, PSK31 and some CW. QSL direct to Nigel Peacock, PO Box 880, Rarotonga, Cook Islands via New Zealand. He uses LoTW weekly.

QSL ROUTES. Patrice F6GCP #36197, has info back to 1987 at his Website: <http://f6gcp.free.fr/qsinfos.htm>. Here's a simple daily report of sunspots and propagation forecast: <http://www.solen.info/solar/>.

DXTelNET Fabrizio, IK4VYX has announced that a new version of DXTelnet32 is ready for downloading at: <http://golist.net/dldxt.cfm>.

Information on IRCs/US\$ needed for postage to the USA is at: <http://www.qsl.net/w9ol/ircchart.txt>.

QSL help: <http://files.billnjudy.com/>.

DX Calendar: An interactive DX Calendar based on 425 DX News is available at <http://www.dxwatch.com/>.

Perhaps the most **useful propagation page** for Radio Operators can be found at <http://dx.qsl.net/propagation/>

Propagation: Propagation continues to be poor as the Cycle 24 strains to begin in 2009. The lowest solar flux reading was in August 2008 and we have seen many weeks of no sun spots as this trend continues into 2009.

Expect the daily solar flux to range from 71-79 the next quarter and the monthly flux will stay below 80 until solar Cycle 24 is made official by NOAA. **On June 8th the solar flux was 69 the A index 4 and K index 1.**

X-ray emissions from the sun have not improved and the flux remains flat with a small chance of a storm or flare.

Expect the best conditions on June 12-15th, July 9-12th, August 5-8th and September 1-4th. Over the next four months, for USA stations, expect a 20% chance of DX in the mornings to Asia, Europe or Africa and a 20% chance into South America or the Pacific in the afternoon. To tell what DX paths are open, use the beacons from **28.175-28.300 (especially 28.200).**

New DX members' March 2009 to May: March: 75364 DL4BO; April: 75378 DJ2ANG, 75379 DL1ALK, 75380 DG3YBS; May: 75388 DL9OC; 75395 PB5WIM.

Thanks to the QRZ-DX, DXNL, The Daily DX by W3UR #25731, Lee KH6BZF #8888 & Ohio/Penn DX Bulletins. Info to Mike Davidson, 3518 Bellefontaine, Houston, TX 77025 USA Email: N5MT@aol.com

DX IS! 73 Mike Davidson N5MT #24949

Copyright © 2009 by N5MT

Meet the Volunteers

A year-long event to find and make contact with all of the people

Who devote time to keep 10-10 an active organization!

The goal? Make contact with each of the following volunteers during 2009

| | |
|-----------------------------------|-------------------------------------|
| AJ5ZX Awards-WAC | KR7RK Treasurer |
| G4BLH. Awards - GB | W6JNV Net Control |
| K0DBK. Director | KZ3T QSO Party Manager |
| K0NO. Committee Member | N0KDB SK Manager |
| K1IEQ Director | N0TW QSL Bureau Manager |
| K2BIL. Committee Member | N3TGB Awards - 1000+ Bars |
| K4QHH Net Control | N5DAS Committee Member |
| K5CC. Director | N5MT Awards - DX |
| K5ERJ Awards - Mobile | N6ELK. Net Control |
| K5FBS. Director | N6OPR Director |
| K6PZE. Net Control | N7AZ. Committee Member |
| KA5OVO Historian | N7PVL. Net Control |
| KA5VVD Moderator | N9AVY. Moderator |
| KA6RFB. Net Control | NN1J. Awards - WPX |
| KA9EKG Net Control | NS2M Net Control |
| KB3KTR. Net Control | NZ1I Moderator |
| KB7ARN Committee Member | VE7ACM Committee Member |
| KB9MJ. Net Control | VE9KM Director |
| KB9NZX. Moderator | W0HIK. Awards - VP |
| KC5GXL Moderator | W1KT Committee Member |
| KC7OC Net Control | W4ZYD Committee Member |
| KC8IM Net Control | W6YLJ. Past President |
| KC8ZTJ Moderator | W7SSG Secretary |
| KD4BVG Committee Member | W9HT Committee Member |
| KD5DE. Director | W9HZC Webmaster |
| KE1HG Committee Member | WA2SUH. Vice President |
| KE3VV. General Council | WA4EEZ Director |
| KE6OIO. Net Control | WA6POZ. President |
| KI0SR Editor | WB0CON Awards - WAS |
| KI6OY Net Control | WB6OJB Net Control |
| KK3Q. Moderator | WN4AMO Committee Member |
| KM5EH Awards -OM/YL | WD8JKV Committee Member |
| KQ4PK. Net Control | W1AMF Committee Member |
| WX5NCO. Moderator | N7YG Committee Member |
| N2EOC Committee Member | K6RDK Committee Member |

RULES FOR THIS EVENT MAY BE FOUND ON PAGE 28 OF THIS PUBLICATION

Silent Keys

Compiled and listed by
Ruth Bartholomew, N0KDB #48715



It is with sorrow that we note the following Ten-Ten members who are now Silent Keys. We extend our sincere condolences to the families and friends of those SK members whose calls and Ten-Ten numbers will forever be kept in the records of the Ten-Ten Net.

| | | | |
|-------|--------|-----------------------------|-----------------------|
| 308 | WB6UWA | Caius L. Thomas | LaJolla, CA |
| 2583 | K5AZ | Dr. Gene Atkinson | Houston, TX |
| 3662 | K4TTT | Richard C. 'Ric' Albury | Carrollton, TX |
| 4652 | W8FBI | James H. Young | Pulaski, TN |
| 5586 | N4TN | Donald W. Jones | Kingsport, TN |
| 7338 | W8MPC | Malcolm A. MacDonald | E Ellijay, GA |
| 7786 | VE7BU | F. Chris McGregor | Vancouver BC, CAN |
| 8363 | NW4M | Ronald M. Forbis | McCalia, AL |
| 10166 | W5FDF | Ralph O. Robinson | Kerrville, TX |
| 10236 | W4DDV | Joseph Michaels III | Phoenix, AZ |
| 11517 | W2QHS | A. Leslie Hill | Tinton Falls, NJ |
| 11747 | K5BDZ | William H. Hickox III | Houston, TX |
| 12632 | W1NPL | Edward J. White | Chicopee, MA |
| 13303 | VE1BBW | David J. Harrison | Port Williams NS, CAN |
| 14012 | WB0RCC | Duane C. Edwards | St. Paul, MN |
| 14845 | W9LWC | Wallace E. Hollinger | Cumberland, WI |
| 16101 | K8LIX | Bernard W. Joseph | Harrison Twsp, MI |
| 18392 | VE4AJS | James A. McMullin | Winnipeg MB, CAN |
| 20878 | N8ERK | John S. Strasko | Elyria, OH |
| 20998 | KZ4G | David L. Vest | Ashland, KY |
| 21047 | W9SUU | Robert B. Sheridan | Westmont, IL |
| 23927 | AK1C | Olaf Passburg | E Longmeadow, MA |
| 23958 | WC1W | Wilbur M. Chadwick | Union, ME |
| 28094 | AA0NG | Kurt A. Diedring | Pagosa Springs, CO |
| 28341 | N4CBN | Betty T. Switzer | Shelby, NC |
| 31485 | KA7IRP | Harry R. Fuller, Jr. | Summerfield, FL |
| 32359 | W4WYX | Carl H. 'Skip' Strippelhoff | Lexington, KY |
| 33132 | KQ9W | David G. Ornee | Western Springs, IL |
| 33140 | N9CHU | Calvin "Ace" Burdett | Pensacola, FL |
| 33751 | KH6DRT | Evillo Abreu | Kekaha, HI |
| 33855 | WB3HBE | Floyd B. Mikesell | Zelienople, PA |
| 36299 | W04I | Frank A. Strickland | Columbus, GA |
| 37906 | KD0JL | John E. Tull, Jr. | Kansas City, MO |

| | | | |
|-------|--------|--------------------------|--------------------|
| 39260 | KA5TQF | David C. Zulawski | El Paso, TX |
| 39440 | K4GOX | Arthur D. Raynor | Bartow, FL |
| 41183 | WD4EIZ | M. Ray Goggans | Fort Payne, AL |
| 41204 | W9IXD | Roger L. Belke | DeKalb, IL |
| 41652 | NF0Q | Eric N. Koch | St. Charles, MO |
| 42171 | AA5WC | John A. Chudzinski | San Antonio, TX |
| 44204 | AB4YO | James C. Singletary, Jr. | Bladenboro, NC |
| 47553 | N5MDR | Franklin L. Bates | Birmingham, AL |
| 47698 | WA7KUM | Ingo Radicke | Globe, AZ |
| 48717 | WA0ZEK | Ott A. Bleich | Donalson, GA |
| 49592 | WB4LRD | Ronald A. Farris | Hixson, TN |
| 50242 | WB7VSP | Patricia A. Zurcher | Roseburg, OR |
| 50247 | KA7CKH | Danny L. Dunivan | Longview, WA |
| 50555 | KD3IH | Earl C. Radding | Greenwood, DE |
| 51476 | KM4CV | Perry E. Taylor | Statesville, NC |
| 51938 | W9UC | Charles P. Alter | Moline, IL |
| 52616 | N6GBF | Gary B. Fritkin | Woodland Hills, CA |
| 53659 | N4AZT | William B. Stackhouse | Goldsboro, NC |
| 53934 | N0JSV | E. Harry Norr | Minneapolis, MN |
| 55280 | AA0IP | Arden H. Fonda | Pueblo, CO |
| 56628 | KF8WQ | William Willingham | Cincinnati, OH |
| 58598 | N3JSS | Matthew W. Kania | Cape Coral, FL |
| 59265 | W7MUM | Sam R. Kelly | Great Falls, MT |
| 60382 | W6MNE | Francis Shacklett | Coeur d'Alene, ID |
| 60440 | N4OZN | Robert C. Phillips | Huntsburg, OH |
| 60595 | KE3HI | Sidney C. Hoffman | Silver Spring, MD |
| 61386 | KB5RR | Clarence H. Dollmeyer | Thonton, CO |
| 62522 | W7GMH | Edwin J. Miller | Keaau, HI |
| 62996 | W9CSY | Charles L. Newlin | Matthews, IN |
| 63580 | KN4GKR | Don E. Cleveland | Charlotte, NC |
| 65339 | W1ZLZ | Gorden M. Berry, Sr. | Seymour, IN |
| 66111 | WA4IRU | Billie V. Garrison | Fayetteville, TN |
| 66993 | KD4VKW | Clark L. Surret, Sr. | Morristown, TN |
| 67330 | KE6IVA | James F. Wood | Fremont, CA |
| 67382 | K1HLG | William F. Braisted | Bangor, ME |
| 67447 | WA9RSH | Merton E. Johnson | Sycamore, IL |
| 67872 | K5SUB | James R. Aaron | Orange, TX |
| 69032 | KF4RXN | Mark E. Lesko | Chester, VA |
| 69352 | AD6AM | James A. Greenwood | Antioch, CA |
| 69859 | K0GAY | Tommy A. Pritchett | Wichita, KS |
| 69989 | W7FEO | Gorden G. Ryan | Moses Lake, WA |
| 74527 | WD4JB | Jimmy M. Beard | Gadsden, AL |

UNBROKEN STRING OF NETS 1,700

By Joe Dubeck, NA9A, 31121,

The City of Lights Chapter of Ten-Ten International was started by members of the Aurora, Illinois Ham Radio Club, The Fox Radio League (FRRL), on Monday, November 8, 1976. Because Aurora was the first city to install electric lights, its motto became The City of Lights, and the name of our chapter. The Monday night nets have continued in an unbroken string to date with June 15 being Number **1,700**. Because of the unknown accuracy of most transmitters at that time, the original logs listed the net's SSB frequency as 28.7 MHz, but soon after ilisted it as 28.720 MHz, where it remains today.

The first Net Control and Chapter Head was Jerry Frieders, W9ZGP, #12847 (SK). In ill health, Jerry turned the Net over to Joe Dubeck, NA9A, #31121, in mid 1995, and Joe remains the Chapter Head and is usually Net Control for the SSB nets.

Additional nets were added at different times. In the 90s, an SSB "Early Net" ran for quite a while at 28.430 (7:30 PM CST) headed up by Ron Kennedy N9KBJ, #58638. The net ended when Ron moved to California.

Also in the 90s, the City of Lights CW Net was started at 28.280 by Lee Fenton, WS9F #60236. When Lee moved away, the CW net was taken over by Bill Schaben, WA9AUW (now W9AX), #62915.

When Bill's time was restricted by evening work commitments Robert "Benny" Benson, W9CZA, #62970 stepped up to the key and moved the CW Net to 28.150 MHz where it remains today. In April, 2009, Benny's health forced his retirement as the CW Net Control and the CW net is now run by Kermit Carlson, W9XA, #73844.

The main interest of the City of Lights Chapter and its nets have been social and contesting. The Chapter does not take part in the popular "Ten-Ten Paper Chasing" activities and has no points or upgrades to membership.

Membership costs a dollar. To qualify, you must have a Ten-Ten number and work five City of Lights members including at least one Chapter or Local member. Those members have numbers followed by either a "C" or "L".

Send your list of contacts with the usual 10-10 logged information to the City of Lights Certificate Manager NA9A at the Callbook address.



Joe, NA9A, #31121 Keith, KR7RK, #63324 Gerry, WA6POZ, #21274 at Dayton

2009 Dayton Hamvention

By Gerry Gross, WA6POZ #21274

Dayton, this year, was a little disappointing. Our booth was moved again and there was no Ten-Ten forum. Both of these are important as many use Dayton to stop by, chat, renew their dues or simply meet fellow Ten-Teners. And when they can't find the booth we both suffer. While I don't know the final attendance figures, I would guess that attendance was up overall. Friday was busy all day; Saturday was surprisingly slow, and Sunday was Sunday. Keith Schlottman, KR7RK, #6624 and I manned the Ten-Ten booth and we don't get a chance to attend any forums, so to attend any event during the weekend is a luxury. This year I was able to attend the ARRL Donor Reception on Thursday evening as the guest of Keith. I was surprised by how many of the attendees I knew and I did get to meet and chat with ARRL President Joel Harrison, W5ZN. On Saturday with Keith as my guest we attended the CQ Magazine reception. This is purely a social event for the many individuals and companies who support CQ. Keith and I found a table and to our surprise seated to my immediate right were Ms. Laura Smith and Bill Cross, W3TN. Laura, if you haven't heard, is Riley Hollingsworth's replacement as FCC Special Council for Amateur Enforcement. Bill is a staff member in the FCC's Mobility Division. Needless to say Keith and I had an enjoyable evening participating in the many conversations with Laura, Bill and the rest of the members at our table.

Some pictures that I took at Dayton include a look at Friday's crowd as seen from our booth. Keith trying to keep busy in a deserted booth. And a 44 meter, 144+ foot, free-standing tower that could be yours for around \$52,000 delivered. I understand it sold for \$46,000 at Dayton.





Friday's crowd as seen from the TEN-TEN booth



A 44 meter, 144 foot free standing tower



Sold for \$46,000.00

Gateway Charter, St. Louis Missouri



Rodney Koch, WA9GQT #14925 Setting up



Honebrew Loop Antenna by Dave Gauding, NF0R

Field Day 2009 Fox Hill Park, St Charles Missouri

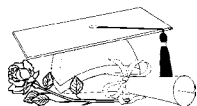


William Eggelston N0WM, #2724 and John Lonigro, AA0VE



Operators Randy Miller, W0MFQ and Jeff Withers, NC0C Background Taking a Break, Tom Brown, W0MFQ, #12946 and John Lonigro, AA0VE, #68672

10-10 SCHOLARSHIP FOUNDATION SUPPORTERS



We encourage all of our members to support the 10-10 Scholarship Foundation. Our goal for the 2009-2010 year is to fund four \$1500 scholarships entirely through member donations outside the dues structure. At the 2001 Annual Meeting, the Board of Directors of the 10-10 International Net accepted the Articles of Incorporation and Bylaws of the 10-10 International Net Scholarship Foundation. With that action the 10-10 International Net Scholarship Foundation was created. The 10-10 Scholarship Foundation is a qualified 501(c)(3) tax exempt organization and contributions are tax deductible. If you have an employer matching program, please let us know.

Why not consider a donation as a Chapter or an individual in memory of a fellow ham or loved one?

If you haven't donated before, we want you to know that all donations, no matter how small, are appreciated and they do add up. At the time you make a donation to your favorite charity, why not write out a check to the 10-10 Scholarship Foundation? If you make a donation of \$10 or more you will receive a special 10-10 pin for 2009. For a \$15 donation, you can also have your choice of 2007 or 2008 pin. Please indicate your preference when you donate.

The members listed below became 10-10 Scholarship Foundation Supporters during the months of September, March, April and May, and we appreciate their support.

WB2SPP

AE1T

N3GQF

KA9QJX

AD6PV

KB5TAN

N3NOP

N2UMM

K6TUJ

KA1DWZ

KB9ASC

DG7DBN

N7JJK

KE6HVV

K7HPT

WB4KKV

KB5BSA

K0NWT

Bronze

(Up to \$99.00)

John Cipolletti 20155

Peter Drexel 43035

Geroge Fazio, Jr. 48050

John Wass 57304

Harry Ley 62068

William Newton, III 62190

Robert Fulton, Jr. 63098

Marianne Cipolletti 64216

Ronald Meredith 69431

Richard Crossmon 72392

Henry Schumacher 74218

Veit Padberg 74324

Jeffrey Kokovitch 74368

Louis Aguilera 74816

Mark Van Winkle 74923

John Sheats 75018

Christopher Newton 75377

Newton White 75403

You too can become a 10-10 Scholarship Foundation Supporter, by making your check payable to the 10-10 Scholarship Foundation. Please send to:

10-10 International Net Scholarship Manager

Larry Berger, WA2SUH

9 Nancy Boulevard

Merrick, NY 11566-3118

Platinum

(\$1000.00 or more)

None

Gold

(\$500.00 to \$999.00)

None

Silver

(\$100.00 to \$499.99)

W7GSV

Robert Rosie

7673

**SUPPORT
TEN-TEN SCHOLARSHIP
FOUNDATION
WITH A DONATION TODAY
IT'S TAX DEDUCTIBLE**

10-10 Scholarship Applicant Information

This year the 10-10 International Net, through our non-profit corporation, the 10-10 Scholarship Foundation, funds four \$1500.00 scholarships, which are administered on its behalf by the Foundation for Amateur Radio (FAR).

Dianne Zimmerman, AA3OF, Chairman of FAR's Scholarship Committee, announced the four most recent winners in the October 2008 10-10 International News. Over the past 21 years, 10-10 has funded 73 scholarship valued at \$73,000.

Applicants must be licensed radio amateurs. There is no restriction on the course of study, but applicants must intend to seek at least an Associate degree from a college or university. Non U.S. amateurs and those seeking graduate degrees are eligible. Foreign members should be aware that students who study outside the United States are also eligible to receive a 10-10 Scholarship.

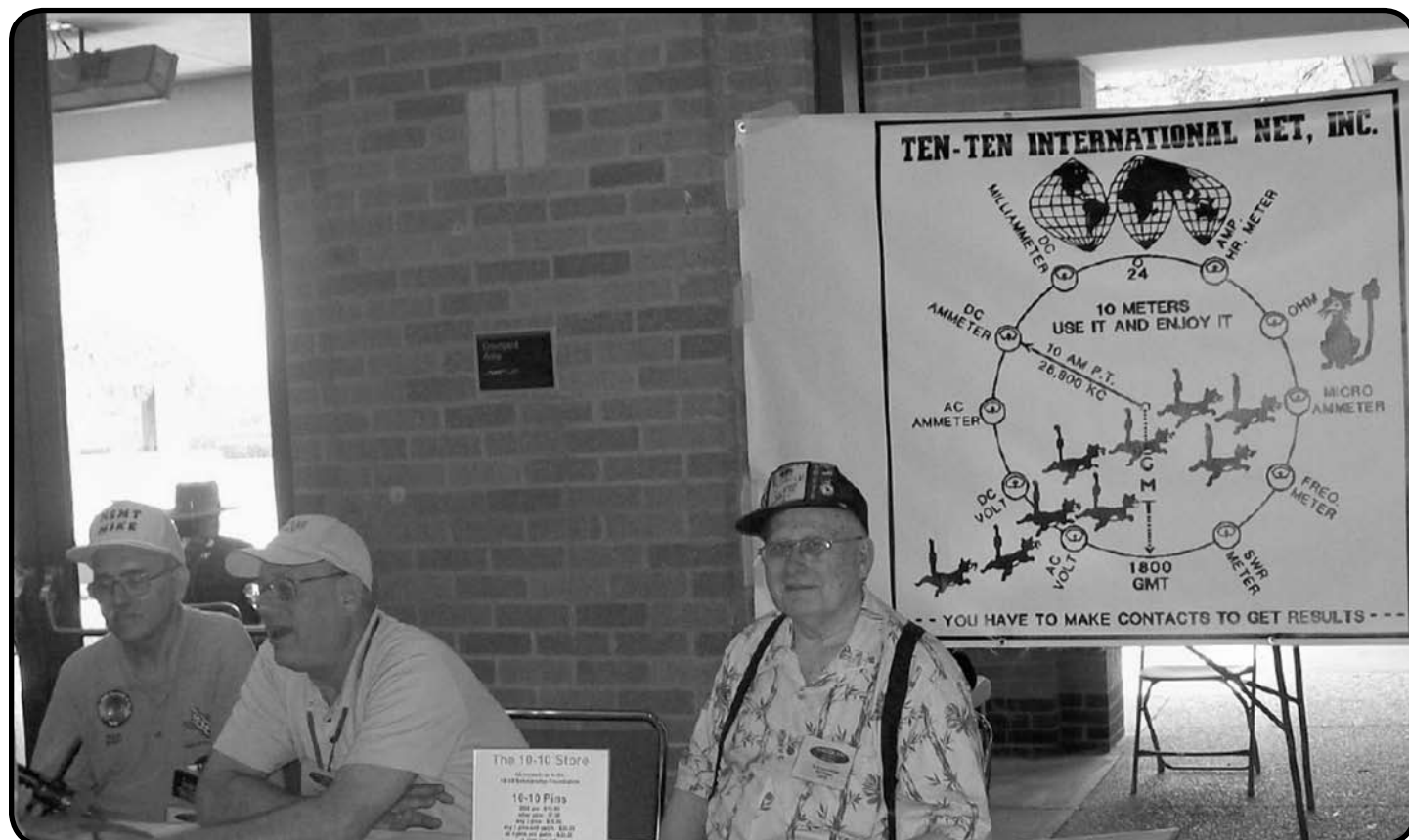
It is suggested that every 10-10 member encourage qualified college bound radio amateurs to take advantage of this opportunity by requesting an application package by letter or QSL card.

**Foundation for Amateur Radio
P.O. Box 831
Riverdale, MD 20738**

Applicants, except those who are active 10-10 members must provide an endorsement from a current active 10-10 member (one whose dues are current).

Completed applications must be received by FAR prior to May 1 of each year.

HamCom, Plano Texas



**DX Awards Manager Mike Davidson, N5MT #24949, President Gerry Gross, WA6POZ, #21274,
VP Awards Manager Carl Fisher, W0HIK #40678**



NET NEWS

Bob Farrow N6OPR #45715

Hello 10-10 Members Where Ever You Are

There is not much to report about activities during the first quarter of 2009 with the Daily 10-10 nets not having anything but local contacts. Just take a look at the reports from each NCS and you can see the results. Here are a few comments from of the NCS.

Bob, yes you are right. It's becoming utterly boring, it takes dedication. I guess you are lucky to live in an area with lots of local support. To make things worse, I am unable to contact KB4KY via ground wave now, so I really don't know if I should include the club as a ckeck-in.

Well in addition to no propagation, last Tuesday when I went to start the net I pressed the foot switch to transmit and the power supply blew up. A capacitor left the building, it made a big flash bang on the way out. I had to run out and use the mobile rig to call the net. I have a hamfest this

weekend so I hope to pick up a power supply.

Bob K4QHH Tuesday net 28.800.

Hi Bob, looks like another superlative month of inactivity on 10 meters here in Northern Indiana. On 4/3, 4/10, 4/17, and today 4/24 I had identical checkins. Me, Myself, and I. One of these days I'll have a net again, but by then I'll probably have forgotten how to conduct one.

73 Bill KB9MJ Thursday net 28.380.

Most every Monday and Saturday there is an informal CW net starting at 1700 on 28.800. All are welcome and you might hear about the on going saga of Ms. Kitty from Ann, KE6OIO, or what's happening with Duke VIII for Doc, WB6OJB.

We have a request for a extended leave of absence for medical reasons by Chris, N7PVL who calls the net for us on Wednesday, ladies day, on 28.380. KC8IM is going to call that net until Chris is ready to return. Take care Chris, hope it will be soon and maybe there will be some propagation for you to work with.

So there you have it. If one is lucky to be in an area like Los Angeles basin one can have fun calling a net.

Hope to see all in Orlando - if not maybe I will work you on one of the daily 10-10 nets, or charter nets.

Thanks for stopping by.

Bob Farrow, N6OPR, #45715

QUARTERLY NET REPORT

| 28.380 | | | 28.800 | | | 28.380 | | | 28.800 | | | 28.380 | | | 28.800 | | |
|--------------|-------|----------|--------|-------|----------|----------------|-------|----------|--------|-------|----------|---------------|-------|----------|--------|-------|----------|
| MONDAY NETS | | | | | | WEDNESDAY NETS | | | | | | FRIDAY NETS | | | | | |
| DATE | TOTAL | w/o 10x# | DATE | TOTAL | w/o 10x# | DATE | TOTAL | w/o 10x# | DATE | TOTAL | w/o 10x# | DATE | TOTAL | w/o 10x# | DATE | TOTAL | w/o 10x# |
| 01-05 | 1 | 0 | 01-05 | 16 | 0 | 01-07 | 1 | 0 | 01-07 | 13 | 0 | 01-02 | 1 | 0 | 01-02 | 08 | 1 |
| 01-12 | 1 | 0 | 01-12 | 14 | 0 | 01-14 | 1 | 1 | 01-14 | 13 | 0 | 01-09 | 3 | 0 | 01-09 | 06 | 1 |
| 01-19 | 1 | 0 | 01-19 | 15 | 0 | 01-21 | 1 | 2 | 01-21 | 13 | 0 | 01-16 | 1 | 0 | 01-16 | 07 | 0 |
| 01-26 | 1 | 0 | 01-26 | 19 | 0 | 01-28 | 1 | 0 | 01-23 | 13 | 0 | 01-23 | 1 | 2 | 01-23 | 10 | 1 |
| 02-02 | 1 | 0 | 02-02 | 14 | 1 | 01-30 | 2 | 0 | 01-28 | 11 | 0 | 01-30 | 1 | 0 | 01-30 | 06 | 1 |
| 02-09 | 1 | 0 | 02-09 | 19 | 0 | 02-04 | 2 | 0 | 02-04 | 12 | 0 | 02-06 | 3 | 0 | 02-06 | 09 | 1 |
| 02-16 | 1 | 0 | 02-16 | 19 | 0 | 02-11 | 2 | 1 | 02-11 | 06 | 0 | 02-13 | 3 | 0 | 02-13 | 06 | 0 |
| 02-23 | 1 | 0 | 02-23 | 14 | 0 | 02-18 | 2 | 0 | 02-18 | 14 | 0 | 02-20 | 1 | 0 | 02-20 | 07 | 1 |
| 03-02 | 1 | 0 | 03-02 | 20 | 0 | 02-25 | 2 | 0 | 02-25 | 10 | 0 | 02-27 | 3 | 0 | 02-27 | 03 | 0 |
| 03-09 | 1 | 0 | 03-09 | 19 | 0 | 03-04 | 2 | 0 | 03-04 | 13 | 0 | 03-06 | 3 | 0 | 03-06 | 10 | 1 |
| 03-16 | 1 | 0 | 03-16 | 16 | 0 | 03-11 | 2 | 0 | 03-11 | 12 | 0 | 03-13 | 3 | 0 | 03-13 | 05 | 0 |
| 03-23 | 1 | 0 | 03-23 | 16 | 0 | 03-18 | 2 | 1 | 03-18 | 15 | 0 | 03-20 | 4 | 1 | 03-20 | 08 | 1 |
| 03-30 | 1 | 0 | 03-30 | 15 | 0 | 03-25 | 2 | 0 | 03-25 | 18 | 0 | 03-27 | 1 | 0 | 03-27 | 07 | 1 |
| TUESDAY NETS | | | | | | THURSDAY NETS | | | | | | SATURDAY NETS | | | | | |
| 01-06 | 2 | 0 | 01-06 | 3 | 0 | 01-01 | 17 | 1 | 01-01 | 4 | 0 | 01-03 | 2 | 0 | 01-03 | 15 | 0 |
| 01-13 | 2 | 0 | 01-13 | 2 | 0 | 01-08 | 14 | 0 | 01-08 | 3 | 0 | 01-10 | 2 | 0 | 01-10 | 17 | 0 |
| 01-20 | 2 | 0 | 01-20 | 2 | 0 | 01-15 | 18 | 0 | 01-15 | 2 | 0 | 01-17 | 2 | 0 | 01-17 | 12 | 0 |
| 01-27 | 7 | 0 | 01-27 | 3 | 0 | 01-22 | 16 | 1 | 01-22 | 4 | 1 | 01-24 | 2 | 0 | 01-24 | 13 | 0 |
| 02-03 | 2 | 0 | 02-03 | 2 | 0 | 01-29 | 17 | 0 | 01-29 | 4 | 0 | 01-31 | 2 | 0 | 01-31 | 16 | 0 |
| 02-10 | 3 | 0 | 02-10 | 2 | 0 | 02-05 | 28 | 4 | 02-05 | 4 | 0 | 02-07 | 2 | 0 | 02-07 | 18 | 0 |
| 02-17 | 2 | 0 | 02-17 | 2 | 0 | 02-12 | 19 | 1 | 02-12 | 5 | 1 | 02-14 | 2 | 0 | 02-14 | 10 | 0 |
| 02-24 | 2 | 0 | 02-24 | 2 | 0 | 02-19 | 20 | 0 | 02-19 | 3 | 0 | 02-21 | 2 | 0 | 02-21 | 08 | 0 |
| 03-03 | 2 | 0 | 03-03 | 2 | 0 | 02-26 | 15 | 2 | 02-26 | 4 | 0 | 02-28 | 2 | 0 | 02-28 | 13 | 0 |
| 03-10 | 2 | 0 | 03-10 | 3 | 0 | 03-05 | 18 | 1 | 03-05 | 4 | 0 | 03-07 | 2 | 0 | 03-07 | 12 | 0 |
| 03-17 | 2 | 0 | 03-17 | 2 | 0 | 03-12 | 15 | 2 | 03-12 | 3 | 0 | 03-14 | 2 | 0 | 03-14 | 10 | 0 |
| 03-24 | 2 | 0 | 03-24 | 2 | 0 | 03-19 | 20 | 3 | 03-19 | 4 | 0 | 03-21 | 2 | 0 | 03-21 | 14 | 1 |
| 03-31 | 2 | 0 | 03-31 | 2 | 0 | 03-26 | 12 | 1 | 03-26 | 5 | 0 | 03-28 | 2 | 0 | 03-28 | 09 | 1 |

TEN-TEN AWARDS

To apply for any 10-10 Award, paid-up membership is mandatory. You are not required to send in proof as the Awards Manager has the current membership database. All contacts made for any award must be legal 10-10 contacts (a full exchange of Call, Name, QTH and 10-10 number from BOTH members). An application listing the rules for each award is available from the appropriate Awards Manager listed at the end of the award listings. Please send your request with a #10 (business size) envelope, self addressed and stamped with one unit of first class postage (or enclose one IRC for GB Award), to the Award Manager for the Award you are interested in obtaining. Please no phone calls to Award Managers for an application or list of rules. Contact requirements and rules for all Awards are available on the 10-10 website - www.ten-ten.org

TOP TEN HONOR ROLL

| No. | CNTCTS | CALL | 10-10 |
|-----|--------|--------|-------|
| 01 | 24600 | WA5JDU | 03017 |
| 02 | 11600 | K5GAY | 11825 |
| 03 | 11500 | K0PV | 09902 |
| 04 | 10800 | NS4M | 41176 |
| 05 | 10000 | K6PZE | 01341 |
| 06 | 09600 | N1API | 25468 |
| 07 | 09500 | N5DAS | 35877 |
| 08 | 08600 | AC6FU | 10937 |
| 09 | 08400 | KF7PU | 30021 |
| 10 | 08100 | W3FGU | 16728 |

TOP TEN CLUBS

| No. | CNTCTS | CALL | 10-10 |
|-----|--------|--------|-------|
| 01 | 09200 | WD0SFT | 37933 |
| 02 | 04400 | K6MQ | 71487 |
| 03 | 01100 | NM5MD | 72385 |

VP AWARDS

| No. | CALL | 10-10 |
|----------------|--------|-------|
| VP 1000 | | |
| 18 | DL8YBM | 36109 |
| VP 1100 | | |
| 12 | DL8YBM | 36109 |

MOBILE AWARDS

| <i>Basic Award</i> | | | |
|--------------------|--------|-------|--|
| No. | CALL | 10-10 | |
| 152 | KC4TVZ | 60783 | |
| 153 | K4JPC | 74584 | |
| 300 Mobiles | | | |
| 008 | DL8YBM | 36109 | |

WPX AWARDS

| Basic WPX Award | | |
|------------------------|--------|-------|
| No. | CALL | 10-10 |
| 363 | KB3GWX | 74600 |
| 500 Prefixes | | |
| 43 | KB5UNX | 64337 |

VP AWARDS

| No. | CALL | 10-10 |
|------|--------|-------|
| 3319 | DK0WKC | 72700 |
| 3320 | DJ3LA | 70617 |
| 3321 | DK0SL | 69952 |

VP WAS AWARDS

| No. | CALL | 10-10 |
|---|-------|-------|
| 47 | N1PDV | 63955 |
| (This is a correction for VP WAS awarded to N1PDV. The January News indicated his award as 46.) | | |

1000+ BAR AWARDS

1000 BAR

| No. | CALL | 10-10 |
|------|--------|-------|
| 1559 | DL8LAC | 58915 |
| 1560 | KD4BVG | 64773 |

7500 BAR

| No. | CALL | 10-10 |
|-----|--------|-------|
| 41 | DL8YBM | 36109 |

DIGITAL AWARDS

| Basic Award | | |
|--------------------|-------|-------|
| No. | CALL | 10-10 |
| 95 | NZ1I | 72759 |
| 96 | K4RRF | 49979 |

| 50 Contacts | | |
|--------------------|-------|-------|
| No. | CALL | 10-10 |
| 50 | K4RRF | 49979 |

| 200 Contacts | | |
|---------------------|-------|-------|
| No. | CALL | 10-10 |
| 25 | K4JPC | 74584 |

| 300 Contacts | | |
|---------------------|--------|-------|
| No. | CALL | 10-10 |
| 05 | KD4BVG | 64773 |

OM/XYL AWARDS

| Basic Award | | |
|--------------------|-------|-------|
| No. | CALL | 10-10 |
| 25 Teams | | |
| 135 | KC8IM | 31959 |

| 75 Teams | | |
|-----------------|-------|-------|
| No. | CALL | 10-10 |
| 029 | KB9MJ | 22313 |

| 100 Teams | | |
|------------------|-------|-------|
| No. | CALL | 10-10 |
| 019 | KB9MJ | 22313 |

| 125 Teams | | |
|------------------|-------|-------|
| No. | CALL | 10-10 |
| 009 | KB9MJ | 22313 |

LUCKY 13 AWARDS

| No. | CALL | 10-10 |
|-----|-------|-------|
| 458 | K4JPC | 74584 |

WAC AWARDS

| No. | CALL | 10-10 |
|-----|-------|-------|
| | K5FBS | 48461 |

W6OI #109 ON THE AIR

The 10-10 Club station, W6OI, is available to any current (dues paid) member or chapter for use as a special event station such as Field Day, Chapter gatherings, and radio conventions. QSL cards are available for special events. Send a written application and a copy of your amateur license to include dates and purpose of operation to:

JACK MOORE K5CC
W6OI LICENSE TRUSTEE
371 RIDGE CREEK LN
BULVERDE TX 78163

W6OI was on the air for the Spring CW and Digital QSO Parties on May 2, 3 and the Open Season PSK Contest on June 6, Bobby, K4JPC operated W6OI during the Mobile QSO Party on March 21 and at the Georgia State Convention on June 6. The W6OI Special Event in which W6OI is operated from all US call areas will be on November 28,29. Louise, N6ELK operates W6OI on the 10-10 Nets which meet daily at 1800Z on 28.380 and 28.800. Please send SASE when requesting a QSL via:

LOUISE CHAPMAN, N6ELK
3210 CLARK AVE.
LONG BEACH CA 90808

Paperchasers working W6OI can request the list from K5CC. W6OI has FIST, SKCC and GERATOL numbers. Contact Brad, K0DBK to arrange a schedule to obtain the FIST and SHCC numbers. Contact K5CC to obtain the GERATOL number.

W6OI 10-10 INTERNATIONAL CLUB STATION SPECIAL EVENT

The 6th annual W6OI Special Event will be held starting at 0001Z on 28 November ending at 2400Z on 29 November 2009.

The Special Event has designated 10-10 members in all US call areas operating W6OI. The purpose of the Special Event is to have fun, keep ten meters active and advertise 10-10. Special Event QSL cards are available for each call area worked and a free certificate will be given to operators that work all call areas. The Canadian Club station, VE9TEN, will be operating from multiple locations. Stations working VE9TEN can count it as a wild card for a US call area if needed to qualify for the certificate. Volunteers (paid up 10-10 members) are needed in each call area. Cliff (K5FBS) and Ray (N5DAS) will accept request from 1 through 5 call areas and Ray the 6 through 10 call areas. Canadian members should contact Rob, VE9KM for permission to operate VE9TEN. After operators are selected I will send letters of authorization to operate W6OI along with guidance on operating procedures. If interested contact Cliff at k5fbs@yahoo.com, Ray atrdobson@satx.it.com and Rob at rireland@mta.ca. For more information contact Jack (K5CC-Trustee W6OI) at k5cc@gvtc.com.

10-10 Has Two Official Daily Nets 28.380 and 28.800
Both Run At 1800z Every Day Except Sunday
Listen And If You Can Hear Us
Join IN!!!

AWARD MANAGERS

| | | | |
|--|---|-----------------------------|----------------------------|
| BAR 100-900 . . . Dan Morris, KZ3T #41015 | 131 Valencia Ln., Statesville, NC 28625 | () | dbm7294mo@roadrunner.com |
| Bar 1000+ Doris Slye, N3TGB #68129 | 708 Doages Dr., Millersville, MD 21108-2131 | (410) 923-2811 | n3tgb@aol.com |
| VP Bar Carl Fisher, W0HIK #40678 | 5 Angelina Dr., Augusta, KS 67010-2262 | (316) 775-5900 | wzerohik@aol.com |
| VP WAS Carl Fisher, W0HIK #40678 | 5 Angelina Dr., Augusta, KS 67010-2262 | (316) 775-5900 | wzerohik@aol.com |
| VP Lucky 13 . . . Dan Morris KZ3T #41015 | 131 Valencia Ln., Statesville, NC | (828) 728-5049 | dbm72941mo@roadrunner.com |
| WAC Randy Camron, AJ5ZX #71083 | 7641 Gladiola, San Angelo, TX | (325) 659-2802 | AJ5ZX@suddenlink.net |
| Counties Brad Kimble, K0DBK #55192 | 3855 66th St. E., Inver Grove Hts, MN 55076-2222 | (651) 450-1173 | k0dbk@comcast.net |
| Countries Mike Davidson, N5MT #24949 | 3518 Bellefontaine St. Houston, TX 77025-1310 | (713) 668-8408 | N5MT@aol.com |
| CW Lee Zalaznik, K16OY #50948 | 334 Olivina Ave., Livemore, CA 94551-6137 | (925) 455-0361 | lee.zalaznik@sbcglobal.net |
| Digital Mel Sojka, KD5DE #33513 | 353 Atlantic Ave., Shreveport, LA 71105-2909 | (318) 861-7012 | kd5de@nwla.com |
| Mobile Ed Redwine, K5ERJ #11843 | 9 Yellowrose Lane, Augusta, KS 67010-2230 | (316) 775-5700 | k5erj@yahoo.com |
| OM/XYL Marcus Lieberman, KM5EH #71103 | 2300 Hurley Drive NW, Albuquerque, NM 87120-1013 | (505) 836-1724 | buckml@lobo.net |
| WAS Eva Donaldson, WB0CON #53964 | 12933 W Montana Drive, Lakewood, CO 80228-4244 | (303) 989-0475 | wb0con@comcast.net |
| WPX Al Longo, NN1J #41728 | PO Box 94, Springfield, ME 04487-0094 | (207) 738-3268 | nn1j45@aim.com |
| GB Counties . . . Mike Crawshaw, G4BLH #18446 | 50 Kibble Grove, Brierfield Nelson Lancs, England BB9 5EW | 01144 1282 613754 | g4blh@zen.co.uk |

TEN-TEN QSO PARTY

SPRING CW

May 2-3, 2009

TOP TEN

| CALL | 10-10 | CTX/W | CTX/VO | PTS |
|-----------|-------|-------|--------|-----|
| 01 AJ4SF | 75332 | 30 | 36 | 96 |
| 02 KJ4RV | 37776 | 30 | 15 | 75 |
| 03 KN4Y | 17757 | 29 | 14 | 72 |
| 04 K4LGN | 74603 | 20 | 9 | 49 |
| 05 KU4W | 20986 | 20 | 3 | 43 |
| 06 K4LPC | 74584 | 11 | 11 | 33 |
| 07 N0WM | 2724 | 11 | 9 | 31 |
| 08 N4ERM | 34524 | 12 | 6 | 30 |
| 09 WB6OJB | 70675 | 13 | 0 | 26 |
| 10 W6JNU | 40127 | 11 | 0 | 22 |

CALL AREA 0

| CALL | 10-10 | CTX/W | CTX/VO | PTS |
|------|-------|-------|--------|-----|
| N0WM | 2724 | 11 | 9 | 31 |

CALL AREA 1

| CALL | 10-10 | CTX/W | CTX/VO | PTS |
|-------|-------|-------|--------|-----|
| W1G | 43006 | 3 | 1 | 7 |
| AB1BW | 73773 | 2 | 0 | 4 |

CALL AREA 2

| CALL | 10-10 | CTX/W | CTX/VO | PTS |
|--------|-------|-------|--------|-----|
| WA2JSG | 9712 | 7 | 1 | 15 |
| N2EOC | 37549 | 7 | 0 | 14 |

CALL AREA 3

| CALL | 10-10 | CTX/W | CTX/VO | PTS |
|--------|-------|-------|--------|-----|
| WA3JXW | 4377 | 4 | 1 | 9 |

CALL AREA 4

| CALL | 10-10 | CTX/W | CTX/VO | PTS |
|--------|-------|-------|--------|-----|
| AJ4SF | 75332 | 30 | 36 | 96 |
| KJ4RV | 37776 | 30 | 15 | 75 |
| KN4Y | 17757 | 29 | 14 | 72 |
| K4LGN | 74603 | 20 | 9 | 49 |
| KU4W | 20986 | 20 | 3 | 43 |
| K4JPC | 74584 | 11 | 11 | 33 |
| N4ERM | 34524 | 12 | 6 | 30 |
| AA4PR | 39081 | 8 | 0 | 16 |
| KR4OE | 62657 | 7 | 2 | 16 |
| N4ANV | 18712 | 6 | 0 | 12 |
| KC4JAN | 56060 | 3 | 0 | 6 |
| KN4ZZ | 57566 | 3 | 0 | 6 |
| KG4GVV | 71868 | 1 | 1 | 3 |
| KZ3T | 41015 | 1 | 0 | 2 |
| WJ5O | 37215 | 1 | 0 | 2 |

CALL AREA 5

| CALL | 10-10 | CTX/W | CTX/VO | PTS |
|-------|-------|-------|--------|-----|
| K5CC | 50708 | 6 | 1 | 13 |
| WX5I | 67839 | 3 | 1 | 7 |
| W5GVP | 00572 | 0 | 3 | 3 |

CALL AREA 6

| CALL | 10-10 | CTX/W | CTX/VO | PTS |
|--------|-------|-------|--------|-----|
| WB6OJB | 70675 | 13 | 0 | 26 |
| W6JNU | 40127 | 11 | 0 | 22 |
| K6ASK | 50969 | 5 | 0 | 10 |

CALL AREA 7

| CALL | 10-10 | CTX/W | CTX/VO | PTS |
|------|-------|-------|--------|-----|
| W7MC | 69078 | 6 | 5 | 17 |

QRP

| CALL | 10-10 | CTX/W | CTX/VO | PTS |
|------|-------|-------|--------|-----|
| W1G | 43006 | 3 | 1 | 7 |

COUNTRY ORDER

CANADA

| CALL | 10-10 | CTX/W | CTX/VO | PTS |
|--------|-------|-------|--------|-----|
| VE5BCS | 42027 | 7 | 1 | 15 |

CHAPTERS

| CHAPTER | LOGS | PTS |
|---------------------|------|-----|
| POSSOM TROT | 10 | 349 |
| MARGARITA & MARTINI | 1 | 33 |
| GATEWAY | 1 | 31 |
| AZ DESERT | 1 | 17 |
| SHOT | 1 | 7 |
| LONESTAR | 1 | 3 |

CHECK LOGS

| CALL | 10-10 | CTX/W | CTX/VO | PTS |
|--------|-------|-------|--------|-----|
| KB0UKW | 68726 | 15 | 2 | 32 |
| WW3K | 70376 | 6 | 1 | 18 |
| W6OI | 109 | 6 | 1 | 13 |

10-10 Has Two Official Daily Nets

28.380 and 28.800

Both Run At 1800z Every Day Except Sunday

Listen And If You Can Hear Us Join IN!!!

TEN-TEN QSO PARTY

SPRING DIGITAL May 2-3, 2009

TOP TEN

| CALL | 10-10 | CTX/W | CTX/VO | PTS |
|-----------|-------|-------|--------|-----|
| 01 WN4AMO | 73825 | 92 | 46 | 230 |
| 02 N2EOC | 37549 | 72 | 15 | 159 |
| WA4EEZ | 15675 | 67 | 25 | 159 |
| 03 K4RRF | 49979 | 72 | 18 | 146 |
| KB5UNX | 64337 | 61 | 24 | 146 |
| 04 KU4XO | 68613 | 59 | 27 | 145 |
| 05 KC4TVZ | 60783 | 60 | 14 | 134 |
| 06 WA4HMX | 47327 | 57 | 18 | 132 |
| 07 KN4ZZ | 57566 | 56 | 13 | 125 |
| 08 KK3Q | 26039 | 52 | 13 | 117 |
| N3DCJ | 74876 | 52 | 13 | 117 |
| 09 K5FBS | 48461 | 51 | 12 | 114 |
| 10 K4ZCG | 56067 | 49 | 11 | 109 |

CALL AREA 0

| CALL | 10-10 | CTX/W | CTX/VO | PTS |
|-------|-------|-------|--------|-----|
| W0RTV | 13962 | 20 | 1 | 41 |

CALL AREA 1

| CALL | 10-10 | CTX/W | CTX/VO | PTS |
|-------|-------|-------|--------|-----|
| NZ1I | 72759 | 32 | 5 | 69 |
| NN1J | 41728 | 17 | 0 | 34 |
| KE1HG | 69090 | 16 | 0 | 32 |

CALL AREA 2

| CALL | 10-10 | CTX/W | CTX/VO | PTS |
|--------|-------|-------|--------|-----|
| N2EOC | 37549 | 72 | 15 | 159 |
| W2VTV | 71275 | 35 | 4 | 74 |
| WA2HMM | 40510 | 21 | 1 | 43 |
| WA2JSG | 9712 | 7 | 0 | 14 |
| W2IUC | 7860 | 2 | 1 | 5 |

CALL AREA 3

| CALL | 10-10 | CTX/W | CTX/VO | PTS |
|--------|-------|-------|--------|-----|
| N3HPL | 58550 | 25 | 1 | 51 |
| K3BDO | 53417 | 20 | 0 | 40 |
| WA3YLQ | 73261 | 20 | 0 | 40 |

CALL AREA 4

| CALL | 10-10 | CTX/W | CTX/VO | PTS |
|--------|-------|-------|--------|-----|
| WN4AMO | 73825 | 92 | 46 | 230 |
| WA4EEZ | 15675 | 67 | 25 | 159 |
| K4RRF | 49979 | 64 | 18 | 146 |
| KU4XO | 68613 | 59 | 27 | 145 |
| KC4TVZ | 60783 | 60 | 14 | 134 |
| WA4HMX | 47327 | 57 | 18 | 132 |
| KN4ZZ | 57566 | 56 | 13 | 125 |
| KK3Q | 26039 | 52 | 13 | 117 |
| N3DCJ | 74876 | 52 | 13 | 117 |
| N4ZCG | 56067 | 49 | 11 | 109 |
| KD4BVD | 64773 | 51 | 6 | 108 |
| KU4W | 20986 | 33 | 16 | 82 |

CALL AREA 4 (Continued)

| CALL | 10-10 | CTX/W | CTX/VO | PTS |
|--------|-------|-------|--------|-----|
| AD4RX | 67754 | 37 | 7 | 81 |
| K4JPC | 74584 | 31 | 17 | 79 |
| KI4WOH | 75328 | 33 | 5 | 71 |
| KO4OL | 67730 | 29 | 2 | 60 |
| WD4EWB | 18760 | 19 | 2 | 40 |
| KE4HW | 32054 | 15 | 4 | 34 |
| N4ERM | 34524 | 14 | 1 | 29 |
| KJ4RV | 37776 | 12 | 0 | 24 |
| KG4WNA | 74604 | 9 | 0 | 18 |
| N4ANV | 18712 | 6 | 0 | 12 |
| WJ50 | 37215 | 3 | 0 | 6 |

CALL AREA 5

| CALL | 10-10 | CTX/W | CTX/VO | PTS |
|--------|-------|-------|--------|-----|
| KB5UNX | 64337 | 61 | 24 | 146 |
| K5FBS | 48461 | 51 | 12 | 114 |
| KA5VVD | 76539 | 45 | 16 | 106 |
| AE5PW | 74976 | 44 | 12 | 100 |
| KA5EYH | 70252 | 42 | 9 | 93 |
| KD5DE | 33513 | 42 | 8 | 92 |
| W5GVP | 11572 | 36 | 10 | 82 |
| K5CC | 50708 | 25 | 0 | 50 |
| WA5RNV | 11731 | 20 | 0 | 40 |
| WG5T | 60027 | 18 | 0 | 36 |
| NV5E | 74261 | 14 | 2 | 30 |
| KM5EH | 71103 | 10 | 3 | 23 |
| N5PU | 20414 | 10 | 0 | 20 |

CALL AREA 6

| CALL | 10-10 | CTX/W | CTX/VO | PTS |
|-------|-------|-------|--------|-----|
| K6ASK | 50969 | 6 | 2 | 14 |

CALL AREA 7

| CALL | 10-10 | CTX/W | CTX/VO | PTS |
|------|-------|-------|--------|-----|
| W7JY | 74569 | 9 | 3 | 21 |

CALL AREA 8

| CALL | 10-10 | CTX/W | CTX/VO | PTS |
|--------|-------|-------|--------|-----|
| KC8ZTJ | 74649 | 14 | 1 | 29 |

COUNTRY ORDER

ARGENTINA

| CALL | 10-10 | CTX/W | CTX/VO | PTS |
|--------|-------|-------|--------|-----|
| LU1BJW | 39329 | 22 | 0 | 44 |

CLUB ORDER

| CALL | 10-10 | CTX/W | CTX/VO | PTS |
|--------------------------|-------|-------|--------|-----|
| KI4ZCB | 74812 | 52 | 13 | 177 |
| (Operators: KK3Q, N3DCJ) | | | | |
| KD5BZC | 42114 | 42 | 8 | 92 |
| (Operator: KD5DE) | | | | |

CHAPTERS

| CHAPTER | LOGS | PTS |
|---------------------|------|-----|
| CYPRESS | 4 | 497 |
| POSSOM TROT | 9 | 486 |
| MARGARITA & MARTINI | 4 | 466 |
| LONESTAR | 3 | 258 |
| STLHB | 3 | 247 |
| RED RIVER VALLEY | 2 | 184 |
| BRANDING IRON | 1 | 106 |
| GATEWAY | 1 | 41 |
| CRAZY EIGHT | 1 | 40 |
| BATTLEGROAD | 1 | 32 |

CHECK LOGS

| CALL | 10-10 | CTX/W | CTX/VO | PTS |
|-------|-------|-------|--------|-----|
| W6OI | 109 | 25 | 0 | 50 |
| N1ADY | 20637 | 12 | 0 | 24 |
| AA3S | 71035 | 7 | 0 | 14 |

10-10 Has Two Official Daily Nets

28.380 and 28.800

**Both Run At 1800z Every Day Except
Sunday**

Listen And If You Can Hear Us Join IN!!!

TEN-TEN QSO PARTY

MOBILE

March 21, 2009

TOP TEN

| CALL | 10-10 | TOTAL |
|-----------|-------|-------|
| 01 K4JPC | 74584 | 3121 |
| 02 KC4TVZ | 60783 | 2468 |
| 03 KD4BVG | 64773 | 2455 |
| 04 WD4DX | 58295 | 1471 |
| 05 WA4BM | 75354 | 1326 |
| 06 K4ESA | 75305 | 713 |
| 07 K4RNA | 75367 | 662 |
| 08 KC4JD | 57475 | 649 |
| 09 WD4GEO | 71574 | 522 |
| 10 KB3NXT | 74741 | 440 |

CALL AREA 2

| CALL | 10-10 | TOTAL |
|-------|-------|-------|
| K2HVE | 73125 | 4 |

CALL AREA 3

| CALL | 10-10 | TOTAL |
|--------|-------|-------|
| KB3NXT | 74741 | 440 |

CALL AREA 4

| CALL | 10-10 | TOTAL |
|--------|-------|-------|
| K4JPC | 74584 | 3121 |
| KC4TVZ | 60783 | 2468 |
| KD4BVG | 64773 | 2455 |
| WD4DX | 58295 | 1471 |
| WA4BM | 75354 | 1326 |
| K4ESA | 75305 | 713 |
| K4RNA | 75367 | 662 |
| KC4JD | 57475 | 649 |
| WD4GEO | 71574 | 522 |
| N2NKP | 75046 | 168 |
| WD4ABO | 75348 | 68 |
| K4RRF | 49979 | 4 |

CALL AREA 5

| CALL | 10-10 | TOTAL |
|-------|-------|-------|
| KM5FF | 50356 | 18 |

CALL AREA 8

| CALL | 10-10 | TOTAL |
|--------|-------|-------|
| K8DEL | 2978 | 264 |
| KB8DDZ | 74784 | 141 |
| WC8E | 27415 | 124 |
| W8PJY | 14574 | 40 |
| K8IZK | 73889 | 16 |

QRP

| CALL | 10-10 | TOTAL |
|-------|-------|-------|
| K4ESA | 75305 | 713 |

CHAPTERS

| CHAPTER | LOGS | PTS |
|---------------------|------|-------|
| MARGARITA & MARTINI | 10 | 13101 |
| CATT | 4 | 569 |
| CYPRESS | 2 | 526 |

CHECK LOGS

| CALL | 10-10 | TOTAL |
|-------|-------|-------|
| W6OI | 109 | 3121 |
| LW3EX | | 190 |
| W8OSK | 32840 | 28 |

HAVING FUN IN THE MOBILE QSO PARTY BY BOBBY, K4JPC, #74584

Several members deserve credit for the success of the QSO Party. About one week before the 2009 Mobile QSO Party Bob, K4ESA and Brian, WD4DX, members of the Margarita and Martini 10-10 Chapter said let's roll with this event. A few weeks earlier I was given the opportunity to operate the 10-10 Club station W6OI. I saw a chance to double the fun since I could give two points to stations worked. The week before the QSO Party there was a lot of chatter about who would be working the Party and going to a local hamfest that weekend. This was where the fun started and led to the success of the event. Friday night we had stations or rovers placed in 5 or 6 counties with myself going into counties below Atlanta. The QSO Party started and I heard calls on 28.330 right off the bat from 10-10 members over 50 miles to the North. Bob, K4ESA and Aaron, K4RNA went up a local mountain range and gave contacts to stations in counties down the

mountain. Todd, KC4TVZ and his XYL Chandra, KD4BVG were up a mountain over 100 miles away and made contact with us on ground wave with a 4/6 RST. The band was not really open but there was local chatter around Georgia. I heard a few fixed stations with Mac, WA4BM giving points for Gwinnett county. We spent about \$60 for gas working from 6 counties on Friday evening. I was still hearing stations after we called it a night. OK, here is where it gets interesting on the second day of the Party. The Kennehooche hamfest in Cobb county was taking place the same weekend and we had some gear to sell so a few of the Chapter members said they would meet there. Brian met us along with Todd and Chandra. A few of the 10-10 locals in Cobb and Cherokee counties were waiting for us to leave the hamfest so they could catch us in new counties. The road trip started and contacts were flying around so that each mobile could work every other mobile in each county as the convoy proceeded. Walt, LW3EX called in from South America and worked stations from each county passed through. Rick, WD4ABO and Charles, K4AAK fired up

big stations and 50 to 75 mile contacts were made. Later on Saturday all stations followed a path into the northeast Georgia mountains and gave out many counties such as White, Pickens, Union, Dawson and others. Brian, WD4DX's BMW started overheating at the peak of one of the mountain ranges and my van started acting up after hauling some of the unsold ham gear such as a Collins 75A-1 receiver weighing over 75 pounds. Later in the day most stations went their separate ways and we returned to Lilburn GA. Along the way we worked Bill, N2NKP and Ralph, KJ4CNC. We also worked Jay, KC4JD who gave out contacts when he could due to family and work obligations. We made it back into town with about 15 minutes left in the Party and worked Todd with the longest contact yet, Towns county, 125 miles to the north. I think that group participation made the Mobile QSO Party great fun and also gave 10-10 numbers to non 10-10 members hopefully resulting in new members.

TEN-TEN QSO PARTY RULES

6.2 10-10 QSO PARTIES

10-10 QSO Parties are events that are held for fun and to meet old, new and prospective members around the world. The rules listed here are for all general QSO parties. The Anniversary, Meet the Volunteers, and Mobile QSO Parties are specialty events and do have additional rules.

6.2.1 WHO IS ELIGIBLE?

QSO Parties are open to all amateurs with operating privileges on the 10 meter band, however, logs will be accepted only from active members as of the date of the event with the following exception: Open Season event logs will be accepted from all amateurs. Other logs received will be handled as checklogs. Checklogs are used to validate (check) other logs but do not receive awards.

6.2.2 WHEN ARE THE QSO PARTIES?

There are currently eight QSO Parties held throughout the calendar year:

Winter Phone - held on the first full weekend in February

0001 UTC Saturday through 2359 UTC Sunday.

Spring CW - held on the first full weekend in May.

0001 UTC Saturday through 2359 UTC Sunday.

Spring Digital - held on the first full weekend in May.

0001 UTC Saturday through 2359 UTC Sunday.

Open Season (PSK) - held on the first full weekend in June

0001 UTC Saturday through 2359 UTC Sunday.

Summer Phone - held on the first full weekend in August.

0001 UTC Saturday through 2359 UTC Sunday.

Sprint - a 24 hour event held on October 10th (10-10).

0001 UTC through 2359 UTC.

Fall CW - held on the last full weekend in October.

0001 UTC Saturday through 2359 Sunday.

Fall Digital - held on the last full weekend in October.

0001 UTC Saturday through 2359 UTC Sunday.

6.2.3 FREQUENCY AND MODES

Direct unassisted contacts only are permitted. Repeater, Satellite, IRPL or any other similar types of assisted contacts are NOT allowed. Based on the appropriate band plan for the country of operator, CW QSO Parties should be operated in the CW area of the 10 meter band and operated using CW only. Digital QSO Parties should be operated in the digital area of the 10 meter band and operated using Digital modes only (RTTY, PSK, etc). Phone QSO Parties must be operated in the PHONE area of the 10 meter band and may be operated using any approved method (SSB, FM, AM). The SPRINT utilizes all operating modes in the 10 meter band.

NOTE: A QUIET ZONE between 28.490 and 28.510 shall be in effect during QSO Parties using the Phone portion of the 10 meter band to allow for others to use the band.

6.2.4 ENTRY CLASSIFICATION

Entrant may submit a log in ANY of the following classifications:

INDIVIDUAL: Includes single station operators and can also include OM/XYL teams or any families or groups of people using individual call signs and 10-10 numbers.

QRP: same as an individual as listed above except that output power does not exceed 5 watts with CW/Digital operations and/or 10 watts with Phone operations during the entire event.

CLUB: A Club must have a valid club station license issued by their National Licensing Authority and must have active 10-10 membership. Club entries must list the call, name, and 10-10 number (if any) for all operators using the club call. Club operations will take place at one location using one set of equipment.

6.2.5 TRANSMITTER INFORMATION

An operator may operate mobile, portable or fixed. If they change their exchange QTH during the QSO Party, the operator must show same in their log. The operator may enter a log from one call district, province, or DX country. Multi-transmitters (two or more transmitters operating simultaneously, sharing one call sign) are NOT permitted in any QSO Party. If a single transmitter becomes inoperable, it is permissible to change to a replacement transmitter.

6.2.6 EXCHANGE

10-10 members send call sign, name, 10-10 # and QTH (State, Province or Country). If received exchange does not have a 10-10#, then record a zero(0) in the log.

6.2.7 QSO POINTS

Two (2) points are awarded for contacts WITH a 10-10 number. One (1) point is awarded for contacts WITHOUT a 10-10 number. Duplicate entries should be retained in log and show a zero (0) for points. Any log showing 10% or more errors may be handled as a checklog. A station may be counted only once regardless of mode.

6.2.8 CHAPTER SCORE ASSIGNMENT

Any entrant who is a chapter member and whose operating location is within 150 miles of the primary net location of that charter, may assign the entrant's score to that chapter. QSO Party scores for the Sprint may not be assigned.

6.2.9 QSO PARTY ENTRIES

Logs shall be forwarded to the QSO Party Manager as identified in the 10-10 NEWS or on the 10-10 web site. It is strongly suggested that logs be sent as soon as possible after the close of the event. It is also recommended that DX logs should be sent AIR Mail to insure they are received in good time. Any logs received with a postmark date AFTER the deadline date will be handled as a checklog. Any logs received more than 15 days after the entry deadline, regardless of postmark, will be discarded.

6.2.9.1 ENTRY DESCRIPTION

Entries must contain a Cover Sheet, Log and Dupe Sheet as described here:

COVER SHEET will list the Event Entered, Entry Classification, US Call Area (W0-W9

or DX Country), Chapter Score Assignment (if any), number of contacts and points with 10-10#, number of contacts and points without 10-10#, and total contacts and points claimed. LOGS must be listed in date/time order and list UTC Date, UTC Time, Call, Name, 10-10# (zero (0) if none), QTH and Contact Point Value.

A DUPE SHEET is required for any logs exceeding 50 contacts. It may be either a list of all calls contacted in call sign order or hand entered on a dupe sheet grid.

6.2.9.3 ENTRY DEADLINES

Entries for all QSO Parties listed EXCEPT the Sprint shall be postmarked no later than 15 calendar days (this will always be a Monday) after the close of the event. Mailed entries for the Sprint (held on 10/10) shall be postmarked no later than October 25th, unless that day falls on a Sunday, than the postmark deadline shall be October 26th.

6.2.10 QSO PARTY RESULTS AND AWARDS

QSO Party results will be posted on the 10-10 web site about 15 days after the closing deadline for the event and also printed in the 10-10 NEWS in the appropriate issue.

Awards will be issued by the certificate manager for Top Ten Individual scorers in the World, the top Individual scorer in each US Call Area (W0-W9), each DX Country, and for top QRP, CLUB and CHAPTER.

6.2.11 ANNIVERSARY QSO PARTY and MEET THE VOLUNTEERS

These events run from January 1 0001 UTC to December 31 2359 UTC.

In the Anniversary QSO Party, entrants may submit a log of contacts with members that have 10-10# anniversary year contained in their membership number.

Example: 2008 is the 46th anniversary year of 10-10 International Net, Inc. Contact with members containing a "46" in their membership number (i.e., 72046, 69465, 64654, 46126, 00467) would count toward the event. Each year the anniversary number changes, making a new group of members the focus of the event and promoting the use of the 10-meter band. All general rules are applicable with the following exceptions:

During the calendar year (January 1 through December 31) make legal 10-10 contacts with 10-10 Number, Date, Call Sign, QTH with members containing the anniversary year in their membership number as described above.

In the MEET THE VOLUNTEERS event, entrants may submit a log of contacts with members listed in the 10-10 NEWS as being a 10-10 volunteer. One contact per volunteer is permitted, regardless of mode of contact.

In both events, contacts must be made on the 10-meter band with any legal mode (AM, SSB, FM, PSK, CW, etc.).

All submitted logs must contain only one entry for each 10-10 number contacted. Contacts MUST be listed in 10-10 number order and each entry must list the 10-10 Number, Date, Call Sign, Name, QTH and Mode, in that order.

These events are for Individual entries as described in section 6.2.4 and certificates will be awarded for the TOP Ten, however all entrants will be listed in the 10-10 NEWS. Logs MUST be postmarked no later than January 15th of the year following both the Anniversary and Meet the Volunteers QSO Parties. Only members in good standing (with dues paid) are allowed to submit logs.

6.2.12 MOBILE QSO PARTY

This event is held on the third Saturday in March from 0001 to 2359 UTC. All general rules are applicable with the following exceptions:

Fixed stations contact mobiles, mobiles contact everyone. Mobile applies to car, truck, RV, motorcycle, boat, airplane or other mode of transportation. If in doubt, contact the QSO Party Manager. A station operating a mobile entry must be a true mobile. Sitting in the driveway and using the base station antenna or amplifier, or using commercial power is not permitted. RV generators are permitted only if the generator is used while in transit (moving).

Operation while your vehicle is parked across a county line, occupying two counties, counts as two counties and two contacts. Marine and aeronautical mobiles must be able to establish counties of operation.

The on-the-air exchange shall be Call, Name, State, 10-10 Number (if member, zero (0) if not), and county (if applicable). Only counties in the 50 US states may be used as a multiplier.

Count one point for each contact whether a member or not. Fixed stations multiply the number of contacts by the number of different counties worked. Fixed Score equal number of contacts times number of counties worked. Mobile stations multiply the number of contacts by the number of different counties worked PLUS a bonus of the number of counties worked from. Score equals (number of contacts) times (counties worked plus counties worked from).

All mobile stations must submit separate logs for the counties worked from. Log scores will be combined by the QSO Party Manager. Here is an example of how scoring is done for each county worked from using the following numbers

Contacts made: 7: Counties worked: 5: Counties worked from: 3: Multiplier-Add counties worked and counties worked from (5+3=8) Score for county: 7X8=56.

Do this computation for each county worked from. If scores from the other two counties worked were 64 and 90 then the total score would be (56+94+90)=210.

Logs MUST be postmarked no later than 14 days after the end of the event. Only members in good standing (with dues paid) are allowed to submit logs.

6.2.13 FOR MORE INFORMATION

Current information about 10-10 and upcoming 10-10 QSO Parties is always available on the 10-10 web site. Cover sheets, logging forms and dupe sheets are also available for downloading or printing. The address is <http://www.ten-ten.org>. Any unanswered questions regarding the QSO Party rules may be forwarded to the QSO Party Manager.

TEN - TEN NET GUIDE

As Of 4 March 2009

| DAY | ZUSM | ZWIN | CHAPTER | QTH | FREQ | DAY | ZUSM | ZWIN | CHAPTER | QTH | FREQ |
|-----|------|------|---|--------------------|-----------|---|------|------|--|----------------------|----------|
| SUN | 0001 | 0100 | Margarita and Martini | Lilburn, GA | 28330* | WED | 0200 | 0300 | 10 Bar X | El Paso, TX | 28440 |
| SUN | 0300 | 0400 | Chief Seattle | Seattle, WA | 28630 | WED | 0300 | 0400 | Edmonton Area/City of Champions | Edmonton, ALB | 28520 |
| SUN | 0830 | 0930 | Borinage | Colfontaine, ON | 28785 | WED | 0300 | 0400 | Chief Seattle | Seattle, WA | 28630 |
| SUN | 1200 | 1300 | Elmer J Fudd | Berwick, PA | 28340 | WED | 1200 | 1300 | Elmer J Fudd Net | Berwick, PA | 28340 |
| SUN | 1300 | 1400 | GB Ten | Spalding, GA | 28860 | WED | 1700 | | Gold City | Rutherfordton, NC | 28425* |
| SUN | 1300 | 1400 | Arlington | Arlington, VA | 29200 | WED | 1700 | 1800 | Channel Islands | Oxnard, CA | 28340 |
| SUN | 1430 | | Cincinnati Area Ten Tuners | Milan, IN | 28960 | WED | 1800 | 1900 | Outlaws on Ten | San Antonio, TX | 28644* |
| SUN | 1500 | 1600 | Neanderthal Chapter | Leichlingen, DL | 28355 | WED | 2200 | 2300 | Route-66 | Boonville, IN | 28370 |
| SUN | 1630 | 1730 | Possum Trot | Rarford, NC | 28345 | WED | 2300 | 2359 | Michigan Robins | Southfield, MI | 28493 |
| SUN | 1700 | 1800 | Major League Baseball | La Mirada, CA | 28380 | WED | 2300 | 2359 | Southwest FL 10-Meter Moonshine | Port Charlotte, FL | 28405 |
| SUN | 1800 | 1900 | Portland 500 | Salem, OR | 28350 | W/T | 2359 | 0059 | Battle Road | Mason, NH | 28390 |
| SUN | 1900 | | Cypress | Orlando, FL | 28040 CW | THU | 0001 | 0100 | Egyptian Radio Club | Granite City, IL | 28420 |
| SUN | 1930 | | North Georgia | Atlanta, GA | 28610 | THU | 0001 | | Cradle of the Confederacy | Pike Road, AL | 28350 |
| SUN | 1930 | 2030 | Steel City | Eubanks, KY | 28420 | THU | 0100 | 0200 | Channel Islands | Oxnard, CA | 28340 |
| SUN | 2100 | 2200 | Possum Trot | Raeferd, NC | 28150 CW | THU | 0100 | 0200 | Gateway | St Louis, MO | 28650 |
| SUN | 2200 | 2230 | SO TX Lighthorse Brigade | San Antonio, TX | 28345 | THU | 0100 | 0200 | Milwaukee | Milwaukee, WI | 28365 |
| SUN | 2300 | 2359 | SW FL 10-Meter Moonshine Net | Port Charlotte, FL | 28405 | THU | 0130 | 0200 | Cowtown | Arlington, TX | 28460* |
| MON | 0001 | 0100 | Chesapeake Bay | Chestertown, MD | 28435 | THU | 0230 | 0330 | Windfarms | Livermore, CA | 28485 |
| MON | 0030 | 0130 | Minuteman | Saugus, MA | 28150 CW | THU | 0300 | 0400 | Chief Seattle | Seattle, WA | 28630 |
| MON | 0100 | | Arizona Desert 10-10 Net | Phoenix, AZ | 28445 | THU | 1200 | 1300 | Elmer J Fudd Net | Berwick, PA | 28340 |
| MON | 0100 | 0200 | Milwaukee | Milwaukee, WI | 28365 | THU | 1300 | 1400 | GB Ten/Laurel Mancunium | Spalding, GA | 28870 |
| MON | 0100 | 0200 | Lonestar | Arlington, TX | 28460 | THU | 2000 | | Branding Iron | Kemper, TX | 28345 |
| MON | 0030 | 0130 | Palmetto | Hollywood, SC | 28450 | FRI | 0001 | 0100 | Crazy Eights | McKeesport, PA | 28388.88 |
| MON | 0130 | 0230 | Bauxite | Benton, AR | 28470 | FRI | 0001 | 0100 | Ft McHenry/Cornerstone/Yodar Kritch | Arbutus, MD | 28370 |
| MON | 0300 | 0400 | Chief Seattle | Seattle, WA | 28630 | FRI | 0100 | 0200 | Sky Blue Waters/Twin Cities/Tin Lizzie | Afton, MN | 28380 |
| MON | 1200 | 1300 | Elmer J Fudd Net | Berwick, PA | 28340 | FRI | 0300 | 0400 | Chief Seattle | Seattle, WA | 28430 |
| MON | 1700 | | Colorado Quartermaster | Widefield, CO | 28120 PSK | FRI | 1200 | 1300 | Elmer J Fudd Net | Berwick, PA | 28340 |
| MON | 1730 | | Santa Fe Trial | Galesburg, IL | 28380 | FRI | 1400 | | New Waterkant | Boerm, DL | 28355 |
| MON | 2030 | | Space Coast | Elmendorf, TX | 28355 | FRI | 2230 | 2130 | Down Under | Auckland, ZL | 28530 |
| MON | 2130 | 2200 | Colorado Quartermaster | Widefield, CO | 28360 | SAT | 0001 | 0100 | MAINE-iacs | North Haven, ME | 28402.5 |
| MON | 2100 | | Oceans of the World/Sun Coast Radio Weeki | Wachee, FL | 28375 | SAT | 0100 | 0200 | Busy Bees | San Angelo, TX | 28360 |
| TUE | 0001 | 0100 | Ft McHenry/Conerstone/Yodar Kritch | Arbutus, MD | 28370 | SAT | 0300 | 0400 | Chief Seattle | Seattle, WA | 28630 |
| TUE | 0100 | 0200 | CO Centennial/CO Frontier Gang | Lakewood, CO | 28340 | SAT | 1200 | 1300 | Elmer J Fudd Net | Berwick, PA | 28340 |
| TUE | 0100 | 0200 | City of Lights | St Charles, IL | 28150 CW | SAT | 1330 | 1430 | Springbok | Meadowview, VA | 28385 |
| TUE | 0130 | 0230 | City of Lights | St Charles, IL | 28720 | SAT | 1430 | 1530 | Steamboat Plus | Shreveport, LA | 28430 |
| TUE | 0130 | 0230 | Bauxite | Benton, AR | 28470 | SAT | 1500 | 1600 | Republic of Texas | Eules, TX | 28460 |
| TUE | 0130 | 0230 | OK Route 66 Chapter | Oklahoma City, OK | 28390 | SAT | 1510 | 1610 | Louisiana Pelican 10-10 Net | Baker, LA | 28450 |
| TUE | 0200 | 0300 | Concho Valley | San Angelo, TX | 28360 | SAT | 1630 | 1730 | Boomtown | Burkburnett, TX | 28402 |
| TUE | 0230 | 0330 | City of Roses/Portland Bridges | Ridgefield, WA | 28835* | SAT | 1700 | 1800 | Lilac City | Spokane, WA | 28395* |
| TUE | 0300 | 0400 | Chief Seattle | Seattle, WA | 28430 | SAT | 1730 | 1830 | Tango | Buenos Aires, LU | 28650 |
| TUE | 0300 | 0400 | Bay Area | Hayward, CA | 28475 | SAT | 1800 | | Keystone/Keystone Stars | Brea, CA | 28765 |
| TUE | 0430 | | Aloha | Hilo, HI | 28487 | SAT | 1900 | | Peshtigo Fire | Wisconsin Rapids, WI | 28370 |
| TUE | 1200 | 1300 | Elmer J Fudd Net | Berwick, PA | 28340 | SAT | 2000 | | Restoration Project | Port Alberni, BC | 28747* |
| TUE | 1500 | 1600 | New Mexico Mud Ducks | Albuquerque, NM | 28835 | SAT | 2200 | | Alii | Lihue, HI | 28730 |
| TUE | 1800 | | Electric City | Melbourne, FL | 28425 | SAT | 2300 | | Oregon Trailblazers | Lander, WY | 28450 |
| TUE | 2000 | | Branding Iron | Kemper, TX | 28345 | (*) New or change | | | | | |
| TUE | 2300 | 2359 | Fort McHenry | Arbutus, MD | 28370 | All changes to the above times and/or frequencies should be | | | | | |
| T/W | 2330 | 0030 | Republic of Texas | Eules, TX | 28460 | referred to the Chapter Manager if you desire accuracy of your net. | | | | | |
| WED | 0001 | 0100 | Castle Craig | Meriden, CT | 28375 | Chapter Manager: K5FBS, Clifford A Taylor, 22707 Red Mountain | | | | | |
| WED | 0001 | | Cypress | Orlando, FL | 28465 | Drive, Elmendorf, TX 78112-6034. Email: k5fbs@yahoo.com. | | | | | |
| WED | 0030 | | Kansas Trails | Grove City, MN | 28385 | | | | | | |
| WED | 0030 | 0130 | All American City | Woodstock, AL | 28400 | | | | | | |
| WED | 0030 | 0130 | Minuteman | Saugus, MA | 28409 | | | | | | |
| WED | 0100 | | Cincinnati Area Ten Teners | Milan, IN | 28800 | | | | | | |
| WED | 0100 | 0200 | Houston SHOT | Houston, TX | 28488 | | | | | | |

MEMBERSHIP INFORMATION AND SERVICES

WOULD YOU LIKE TO JOIN 10-10?

Here is what you need:

1. You must hold a valid amateur operator license.
2. Your valid amateur operator license **MUST** authorize or qualify you for unsupervised transmitting operations in the ten meter amateur band under your own personal call sign.
3. You must make contact with ten members of 10-10 on ten meters and submit a log listing all contacts, their 10-10 number, call sign, name, date of contact, and QTH (state/province/country). A new member application and contact log is available in Section 1 below.
4. You must remit dues for one or more years full membership. Fee schedule and payment information can be found in Section 2 below.

TYPES OF MEMBERSHIPS

Primary Membership

Primary membership is available with yearly dues, although there is a special incentive available when you pay for three years at once.

Family Membership

Family membership consists of a primary member and one or more family members who qualify as a 10-10 member (has made the necessary 10 contacts) and who reside at the same location and postal address. Family memberships run concurrently with that of the primary member. Add \$5.00 for each additional family member for each year. Only the primary member will receive a copy of the 10-10 News.

Life Membership

Life membership is available and may be paid in one lump sum or spread across two or three years. For information refer to the "Life Membership Application" form on the web or contact the 10-10 Data Manager.

Senior Life Membership

Senior life membership is available to anyone who is currently 65 years of age or older. Payment can be made as one lump sum or within a one year period. For information refer to the "Life Membership Application" form on the web or contact the 10-10 Data Manager.

Family Life Membership is no longer available

Club Membership

Club Membership is available to any Amateur Radio Organization which holds a valid Amateur Radio License. Application must be made by the club trustee. Dues are the same as the Primary member. No family or life memberships are available. Club members have all the same rights and privileges as primary members except clubs do not vote in elections.

MEMBERSHIP RENEWALS

Fill out fee schedule and method of payment in Section 2 below and forward as indicated to Data Manager. Please make sure you include a copy of your address label with form. If you do not have a copy of your address label (renewing after your membership has lapsed), please include a note with your name, current mailing address, call sign and 10-10 number.

DATA MANAGER SERVICES

Call/Name/Address Changes

All changes are to be sent to the 10-10 Data Manager. Please include your address label (or a copy) with necessary corrections.

10-10 Information Brochure

The 10-10 Information Brochure is 10 pages of everything you would want to know about 10-10. It can be downloaded from the 10-10 web or is available from the Data Manager for \$2.00.

WinIQ

WinIQ is a Windows based program that is updated monthly and is a cross reference between the call and 10-10 number. It can be found on the 10-10 web.

XXIP

XXIP is a DOS based program that is updated monthly and is a roster of 10-10 membership through 10-10 #75001. It is available free at www.lingerinc.com.

AN-TEN-TEN-NAS

AN-TEN-TEN-NAS is a book by L. B. Cebik containing 30 articles and designs for 10 meter antennas from the pages of the 10-10 NEWS. The price has been drastically reduced to \$5.00 USD or free if you renew for 3 years. You must also include the additional \$5.00 US or \$8.00 DX for shipping.

ALL THE NEWS ON CD-ROM

Every published issue of the 10-10 NEWS on one CD. \$20.00
All profits from the sale of AN-TEN-TEN-NAS and the 10-10 NEWS on CD-ROM go to the 10-10 Scholarship Foundation.

Payment may be made by Check, Money Order or IRC's (\$1.00 USD per IRC). VISA and Mastercard are acceptable. Please provide Card Number, Expiration Date, Name on Card, Phone Number and signature of Cardholder.

Mail to:

Data Manager, 10-10 International Net, Inc.
PMB142
643 N. 98th Street
Omaha, NE 68114-2342
402-895-7367

SCHOLARSHIP DONATIONS

Donations to the 10-10 Scholarship Foundation are requested from each member on an annual basis to help fund the four \$1500.00 10-10 scholarship. Your check should be made payable to the 10-10 Scholarship Foundation and sent to:

Larry Berger, WA2SUH #00407
10-10 Scholarship Manager
9 Nancy Blvd.
Merrick, NY 11566-3119

SECTION 1 - MEMBERSHIP APPLICATION AND CONTACT LOG

NOTE: If this membership application is being used for renewal purposes, please enter your 10-10 number here _____

Please print your Name _____ Call _____

Address _____ Year of Birth _____

City _____ State or Country _____

Postal/Zip Code _____ +4 _____ E-mail Address _____

NOTE: 10-10 NUMBER, CALL, NAME, ADDRESS, MEMBERSHIP STATUS AND E-MAIL ADDRESS IS MADE AVAILABLE TO ALL MEMBERS VIA A MEMBERSHIP ROSTER. ALL OTHER INFORMATION IS KEPT CONFIDENTIAL AND NOT DISCLOSED EXCEPT BY ORDER OF A LAWFUL COURT.

I certify that I meet the membership requirements of 10-10 _____

YOUR SIGNATURE

| | 10-10 NUMBER | CALL SIGN | OPERATOR'S NAME | DATE OF CONTACT | OTH (State, Province or DX Country) |
|----|--------------|-----------|-----------------|-----------------|-------------------------------------|
| 1 | | | | | |
| 2 | | | | | |
| 3 | | | | | |
| 4 | | | | | |
| 5 | | | | | |
| 6 | | | | | |
| 7 | | | | | |
| 8 | | | | | |
| 9 | | | | | |
| 10 | | | | | |

SECTION 2 - FEE SCHEDULE AND PAYMENT INFORMATION

(Check appropriate items)

| 10-10 FEE SCHEDULE (eff 2/1/03) | US Zip Codes | DX | <p>Mail to:</p> <p>Data Manager</p> <p>Ten-Ten International Net, Inc.</p> <p>PMB142</p> <p>643 N. 98th Street</p> <p>Omaha, NE 68114-2342 USA</p> <p>402-895-7367</p> <p>For information e-mail: wa6poz@ten-ten.org</p> |
|---------------------------------|-----------------------------------|-----------------------------------|--|
| New Members | <input type="checkbox"/> \$ 15.00 | <input type="checkbox"/> \$ 18.00 | |
| Renewals (yearly) | <input type="checkbox"/> \$ 15.00 | <input type="checkbox"/> \$ 18.00 | |
| Renewals - 3 year incentive | <input type="checkbox"/> \$ 40.00 | <input type="checkbox"/> \$ 49.00 | |
| Family Membership (yearly) | <input type="checkbox"/> \$ 5.00 | <input type="checkbox"/> \$ 5.00 | |
| Life Membership | <input type="checkbox"/> \$500.00 | <input type="checkbox"/> \$650.00 | |
| Senior Life | <input type="checkbox"/> \$150.00 | <input type="checkbox"/> \$200.00 | |
| Scholarship Foundation Donation | <input type="checkbox"/> \$ _____ | <input type="checkbox"/> \$ _____ | |
| Enter Total | | | |

METHOD OF PAYMENT

Check One

- ☐ **CHECK** Make all checks payable to 10-10 International Net, Inc. Please list your call and 10-10 # on your check. Do not send cash. All DX are reminded that money amounts are quoted in US Dollars. DX Members please pay by International Money Orders (IRC's are acceptable, 1 IRC per US Dollar).

- ☐ **MASTERCARD** Account Number (Please include all the numbers on your credit card)

- ☐ **VISA** _____ / _____ / _____ / _____

Good Through: _____ M _____ M / _____ Y _____ Y

Name of Cardholder _____ PHONE (required): _____

SIGNATURE of Cardholder _____ Date: _____

For charges this form may be faxed to 10-10 International Net, Inc. At 402-393-6117

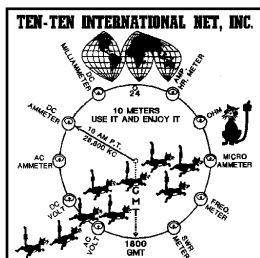
10-10 International Net, Inc.
PMB 142
643 N 98th Street
Omaha, NE 68114-2342

Address Services Requested

**TIME TO RENEW? EXPIRATION DATE IS
ON MAILING LABEL BELOW**

FIRST CLASS

**PRE-SORTED
FIRST-CLASS MAIL
U.S. POSTAGE
PAID
ST. Louis, MO
PERMIT #1197**



July
(Summer)

10-10 QSO PARTY COVER SHEET

2009 EVENTS

| Event | Postmark |
|--|---------------------|
| <input type="checkbox"/> Winter Phone..... | Feb 7-8..... Feb 23 |
| <input type="checkbox"/> Mobile..... | Mar 21..... Apr 4 |
| <input type="checkbox"/> Spring CW..... | May 2-3..... May 18 |
| <input type="checkbox"/> Spring Digital..... | May 2-3..... May 18 |
| <input type="checkbox"/> Open Season..... | June 6..... June 27 |
| <input type="checkbox"/> Summer Phone..... | Aug 1-2..... Aug 17 |

2009 EVENTS

| Event | Postmark |
|---|----------------------------|
| <input type="checkbox"/> Sprint..... | Oct 10..... Oct 26 |
| <input type="checkbox"/> Fall CW..... | Oct 24-25..... Nov10 |
| <input type="checkbox"/> Fall Digital..... | Oct 25-26..... Nov 9 |
| <input type="checkbox"/> Anniversary (47)..... | Jan 1 - Dec 31..... Jan 15 |
| <input type="checkbox"/> Meet the Volunteers..... | Jan 1 - Dec 31..... Jan 15 |

Name _____ Call _____ 10-10# _____

Address _____

City _____ State/Province/Country _____ Zip _____

Your e-mail address (for contest questions only) _____

PLEASE LIST CONTEST EXCHANGE

Call _____ Name _____ 10-10# _____ QTH _____

ENTRY TYPE

- ☐ **INDIVIDUAL**
- ☐ **QRP** 10 watts or less Phone,
5 watts or less CW/ Digital
- ☐ **CLUB** Only for those operating
as a Club Station. If Operating under
a Club call, please list all operators and
their 10-10 numbers (if any) on the log.

**US Call Area (W0-W9)
Or ARRL DX Country
You operated from**

**Chapter Assignment
(Not valid for Sprint)**

Claimed Score

Contacts WITH
10-10 Number: _____ x2= _____

Contacts WITHOUT
10-10 Number: _____ x1= _____

Total
Contacts: _____ Total Pts _____

Note: DUE TO MULTIPLIERS, THE MOBILE QSO PARTY WILL
BE SCORED BY THE CONTEST MANAGER

All submissions must contain this cover sheet (or a reasonable facsimile), the log in UTC Date/Time order,
And a Dupe Sheet (if more than 50 contacts) in callsign order or in grid format.

Mail to Dan Morris, KZ3T, 131 Valencia Lane Statesville, NC 28625, USA
Emailed address Logs maybe emailed to tencontest@roadrunner.com