



10-10 INTERNATIONAL *News*



1984

VOL. 22 NO. 1

HANS
WB6YYI



Official Publication Of The Ten-Ten International Net, Inc.

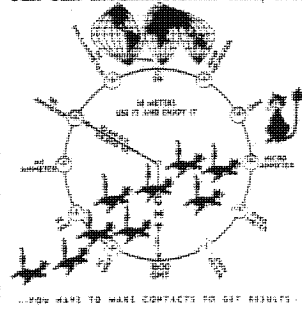
Monitoring 28,800 KHz—Daily Except Sunday

10-10 INTERNATIONAL NET OFFICIALS

President Carl Winter W6OAW
 Vice-President Jim Cass AA6K
 Secretary George Joy WB6SYJ
 Treasurer Gerry Gross WA6POZ
 Directors: Howard Bowman W6QIR
 George Elliott W6ENC
 Bob Hartley W6WPY
 Morrie Goldman W6EHM

Regional Managers: Earle White W1NC
 Larry Berger WA2SUM
 Jim Duppins WA3RBQ
 Clint Paine K4EKX
 Grace Dunlap K5MRU
 Dick Rauscher W6ANK
 Willie Madison WB7VZI
 John Hugentober N8FU
 Berniece Tielemann N9CDO
 Kevin Schleicher WDØBXU
 Carl Schoen W4NJS
 Les Olsen VK2PEW
 Mac McKenzie ZL3RK
 Reg Pearson VE3RG

TEN-TEN INTERNATIONAL NET, INC.



AWARDS:

Bars [100-900] Willie Madison WB7VZI
 Bars and plaques [1000 and up] Bill Risher WB6OMH
 Countries Alan Sherman K1AS
 Worked All States Susan Brackeen K1CAD
 Chapter Coordinator Connie Hauck K6EXO
 Chmn., Rules Comm. Harry Syring WB1FTQ
 Editor, Net Guide Bob Wille KB5PJ
 Editor, 10-10 News Jim Michaels W6PGM
 Int'l Net Manager Sherm Sherman K6PTF
 Legal Counsel Karl Kopetzky K9AQJ
 Printer Bert Ayers W6CL
 Records Manager Lee Pasewalk WB6MGM
 Roster Manager Jo Moise K6AYU
 Supply Manager Carl Winter W6OAW

The 10-10 International News is published four times annually by the 10-10 International Net, Inc. Each paid-up member receives a copy. This is an independent publication. Permission to reprint is granted, providing suitable credit is shown.

Quarterly chapter activity reports should be sent to the Chapter Coordinator, Connie Hauck, K6EXQ, 794 W. 23d St., Upland, CA 91786 Telephone (714) 985-4836.

News items and photos may be sent to Jim Michaels, 3102 Lomina Ave., Long Beach, CA 90808. Telephone (213) 425-5577.

The next issue of the 10-10 International News is the Winter issue, scheduled to be published in April 1984.

SPRING ISSUE DEADLINE DATE

MARCH 15, 1984

10-10 INTERNATIONAL NET

CONTROL STATIONS

Monday Dick W6ANK 28.800 MHz
 Monday(Alt) Bob W6MDK (28.775) "
 Tuesday Al W6RNK 28.800 "
 Wednesday Jack WA6YJJ 28.800 "
 Thursday Sherm K6PTF 28.800 "
 Friday Connie K6EXQ 28.800 "
 Saturday Bud W4WHM 28.800 MHz
 - Nets start at 1800Z -

10-10 NET CHECK-IN SUMMARY

Weekly summary of total stations checking into the 10-10 Net for the week beginning:

| | | | | | |
|--------|-----|--------|-----|--------|-----|
| Aug 29 | 87 | Oct 3 | 260 | Nov 7 | 424 |
| Sep 5 | 193 | Oct 10 | 341 | Nov 14 | 297 |
| Sep 12 | 144 | Oct 17 | 259 | Nov 21 | 232 |
| Sep 19 | 92 | Oct 24 | 229 | | |
| Sep 26 | 134 | Oct 31 | 311 | | |

Relief Net Control Stations

Paul, W6AOP; Don, K4EES; Mark, KA4HMY;
 Wayne, WA6KFT; John, W6LII; Norm, W6LLV;
 Bob, W6MDK and Bill, WB6OMH.

From the desk of W6PGM

This publication welcomes the submission of short articles, news reports, announcements, and so on. Bear in mind that publication dates are approximately a week after the first day of January, April, July and October. Copy deadline dates are generally the 15th of the month preceding publication. ★ ★

Any manuscripts should be typed, and camera-ready, and should be mailed flat, if at all possible. Copy may be single-spaced. Use 8 1/2" x 11" white paper, and leave 1/2" margins on both sides. ★ ★

Photographs in black-and-white are preferred, since they reproduce more clearly than color. Include complete identification of subject matter, with call signs, complete names, 10-10 numbers, chapter identification, and any other desirable information.

ATTENTION

If your address has a U.S. Zip Code, send your renewal or order to the Manager serving the area with the same number as in your own call sign. Details on page 31.

NEWS *from the* Directors

HOWARD BOWMAN
W6QIR #4509

ONE EVENING BACK IN EARLY SEPTEMBER, Edith, the KYL, and I were in our easy chairs watching TV, when the telephone rang. She usually answers it because she sits closer to it than I do, and most of the calls are for her anyhow. Listening to her end of the conversation is like listening to a local work a DX station when you can't copy the DX.

I heard her say, "No, it isn't." Then, "Yes, it is." There was a pause, she cradled the telephone, came back and sat down.

My curiosity was killing me, so I finally had to ask, "What was that all about?"

"It was someone calling a business of some kind. He wanted 'Penton International.' He had our number, all right."

Well, Southern California is loaded with business that have the word 'International' tacked on the name, so it was a few moments before I put things together and asked, "Are you sure he didn't say 'Ten-Ten International'?"

She wasn't absolutely 100 per cent sure, and maybe he hadn't asked for 'Ten-Ten.' I have no way of knowing. Maybe I missed a golden opportunity to recruit a new member, or to pick up some hot news. I'll never know. The moral is this: If you do call my number which is (213) 645-7205, ask for me, not for Penton International. And if you do want to write and get something off your chest, the address is 5872 W. 77 Place (not 77 Street!), Los Angeles, CA 90045.

WHERE THE THAMES WINDS ITS WAY THROUGH LONDON, the river traffic is astonishing and there are innumerable sights for the visitor. One of them is H. M. S. Belfast, a WWII cruiser which has been converted into a war museum. The Belfast lies just upstream from the Tower Bridge, over toward the southerly side of the river.

I thought I remembered some connection between the Belfast and 10-10, and I was not wrong. Records Manager Lee Pasewalk, W6MGM, gave me the dope. On board is a ham station with the call sign GB2RN. It also carries 10-10 number 25937.

The KYL and I managed to find the way to the Belfast (not easily, by the way), paid our admission fees, and went on board. There is a well laid-out route for visitors, with innumerable displays, and involving quite a bit of climbing up and down those steep ladders between decks. Finally, thoroughly lost by this time, we found GB2RN, only to discover that we had picked the wrong day and the station was closed. It was a Saturday, and we were told that it was operational only on Sunday. A sign posted nearby solicited volunteers to operate the station, and asked anyone interested to get in touch with Don Walmsley, G3HZL.

I tried to telephone Don while we were in London, but had no luck in reaching him. I have since sent him a letter, asking about the station and its activity, but haven't received a reply. If I do, I'll let you know what Don has to say.

Quite by accident I discovered another ham station, this one in the Science Museum, with the call sign GB2SM. It was not in operation either, and there was no one around of whom I could ask questions. So far as I can discover, it doesn't have a 10-10 number.

WRITING ABOUT THOSE TWO STATIONS WITH SPECIAL 'GB' CALL SIGNS reminds me of a request which crops up from time to time, and which 10-10 is, at least at present, unable to honor. The situation is this: A 10-10 member is also a member of a local club of some sort, not necessarily a 10-10 chapter. Using his own call sign as a club station call, he works the required number of 10-10 members and applies for a 10-10 number for that club, using his own call sign with the suffix, /CS.

The problem is that there is insufficient room on the computer record for that /CS suffix, and we would wind up having two numbers assigned to the same call sign. Moreover, when the computer facility prints out a listing of numbers by call sign, it would show only the first one assigned, not both of them. The situation would be endlessly confusing, and 10-10 simply does not honor such applications.

If that club station had its own call sign, there would be no problem. For example, W6RO, which operates from the Queen Mary is assigned to the Associated Radio Amateurs of Long Beach, and 10-10 has its own such call sign, W6OI. Both of these are memorial call signs, originally issued to amateurs who are now Silent Keys, and they were issued when it was still possible to get such call signs.

I know very well that someone will write and say that there are club stations with 10-10 numbers elsewhere, and that there are instances of the same call sign having two 10-10 numbers. Of course there are, and that's how we found out what confusion it creates.

ALL KINDS OF SUGGESTIONS COME IN, many with merit, some obviously facetious. One of the more frequent is that 10-10 provide for family memberships. When last I inquired of you about this, responses were divided. It would not be easy to implement unless there were a great many who did want such a provision. Another is that contests (the 10-10 QSO Parties) provide various kinds of differential point scoring. That isn't my department, fortunately. If that's your interest, write Harry Syring, WBLFTQ, who heads up that committee.

If I may be forgiven a comment, however, it is that none of these requests for complicated point scoring come from members of those chapters that have volunteered to do the scoring. That shoe is on the other foot.

I did notice, however, that a new rule has been introduced, or, rather, an old one modified. Rule No. 9 now reads, "A Dupe Sheet is required of all participants submitting logs." I notice also that Harry has underlined that rule to draw it to your attention. If there is one thing that is certain, it is that numerous contestants will (a) write saying that they don't know what a Dupe Sheet is, or (b) send in Xerox copies of their log sheets, or (c) refuse to participate because they don't want to comply with the rule, or (d) figure out some other angle no one has thought of yet.

I call your attention to the fact that this journal has repeatedly announced what a Dupe Sheet is (generally, a simple, single-sheet device for recording your contacts so as to be sure you don't credit twice for working the same station), given directions for making a Dupe Sheet, published such a Dupe Sheet for all to see, and, in general, done all it possibly can to illuminate the matter. We can't put it in every issue, and contestants simply must assume some responsibility in the matter.

AMONG THE ITEMS AIMED AT 10-10 MEMBERS, there is one that undoubtedly fills a need of those of us who are 'paper chasers'. I refer to the '10-X Certificate Guide' that is put together by Jim Beswick, W4THF. Literally, it contains everything one needs to know to apply for all known 10-10 and chapter awards. I'm not going to quote price, except to say that it is less than your 10-10 membership.

Quite frankly, I don't know how anyone who is a paper chaser can get along without it. The reason I make that statement is that there is so much misinformation floating around on the band that it becomes very difficult to get the straight dope. I've even heard members giving incorrect information on joining 10-10 itself, when all they would have to do is look at pages 30 and 31 in the News.

Anyhow, to get back to Jim and his publication, it is quite obvious from looking at it that if he had to charge for his labor (a labor of love, in this instance), he would either have to raise his price considerably or go broke. If you are interested, Jim has an address that will tax your typewriter, but mail gets there. It is Rt. 5, Box 77B, Owltown Mountain, Ellijay GA, 30540. If you're in a real hurry, catch him on 10 or telephone him at (404) 273-3794.

IN THE ABOVE I DIDN'T MENTION that Jim is also one of the sub-managers for the 4th call area. He handles Alabama and Georgia. And speaking of managers reminds me that we're going to have a change down in VK-land. Art Hart, VK2BXN, who has been manager down there for quite a few years, now, has indicated that his health will no longer permit him to handle the chore. Art has been able to arrange for a replacement, who is Les Olsen, VK2PEW. Les lives at 3 Noumea Street, Shalvey 2770, N. S. W. Australia.

This change in managers for Australia should be quite painless, since Art and Les are in frequent touch with each other, and Art has arranged for mail sent to his address to get to Les without delay.

WRITING ABOUT AUSTRALIA AND MAIL reminds me that our overseas members continue to receive their copies of the News as much as three months after it is mailed. For a long time we received complaints because notices of QSO Party dates didn't arrive until the eve of the event, or even after it had been held. A year or two back, Jim Cass, AA6K, who scheduled them, advanced the publication of the rules and dates so that most, if not all, members would receive them in time. Harry Syring, who is now in charge of the events, has continued the practice.

This late arrival of copies of the News sometimes results in requests for air mail service. We used to do that, but had to discontinue the service several years ago for two reasons: predicting overseas air mail rates was impossible, so that 10-10 took a financial beating, and there was simply no one who would volunteer to take over the task of individually addressing each one, getting the correct postage assessed, and getting the envelopes in the mail.

GETTING VOLUNTEERS IS A CONSTANT PROBLEM, especially here in Southern California, where there are so many jobs for which to get volunteer help. Carl is in desperate need of someone to take over his former task of supply manager. We need someone who lives in the Los Angeles-Long Beach area, and who is willing and able to take on the task. If you are such a person or know someone who is, call me at 645-7205 or Carl at 323-0011. Just think - if you take over the job you'll get listed on Page 2 of the News! And you'll have the satisfaction of having made a fine contribution to 10-10 and to ham radio in general.

I WANT TO ACKNOWLEDGE LETTERS FROM Charley Zlatkovich, K5PPY, Claude Butt, K4SCZ, Cecil Johnson, W5SRQ, Jack Smothers, WA6YJJ, Stan Wernick, W5ZF, Laurine Gullette, PT7ZMG, and 'Ol Bil Connor, WB6EWS, et al. I cannot answer all the letters I receive, but do if there is an SASE, and sometimes if the writer seems especially desperate about something even if there is not an SASE.

People write me about things they hear on the air which are obviously wrong, or which give rise to questions. Sometimes I can answer them and sometimes I can't. If it's about 10-10 I usually have, or can get, the answer. If it's about operating procedures, I generally won't even hazard a guess, since they vary so much from operator to operator. Some are about net control operators, although such inquiries usually don't specify whether they are commenting about chapter nets or the daily 10-10 International Net. All I can say about that is that NCO's are people and from individual to individual there are vast personality differences, hence differing operational procedures. It's a fact of life.

IN THE LAST ISSUE OF THIS PUBLICATION, I mentioned that Jim Hardy, K4HAV, was planning to prepare a list of all DX 10-10 members, and thought it might be useful to those of us who chase DX. I have since seen a copy, and it looks good. Jim says that by knowing whether a DX station has a 10-10 number you may decide whether to call him or not. There's another use that Jim may not have thought of. How many times have you worked someone, asked him for his 10-10 number, and had him reply that he had one but had forgotten what it was. With Jim's list you can tell him! If you're interested, get in touch with Jim at 306 Frances St., Sylvester, GA 31791.

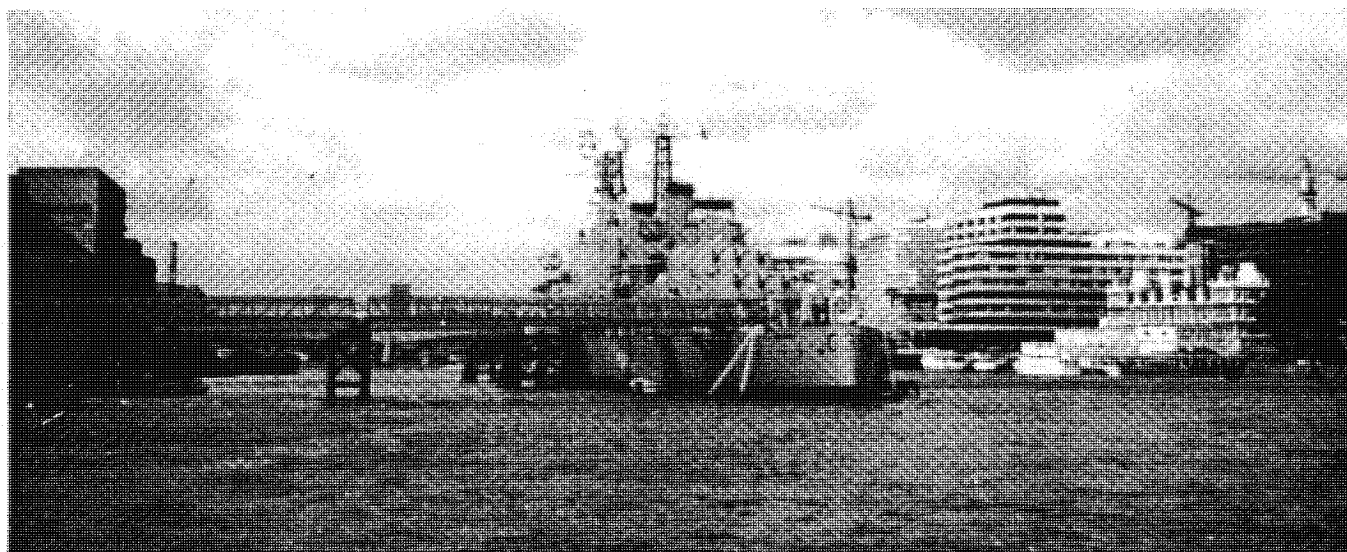
ANOTHER THING I MENTIONED LAST TIME was intended to encourage you to look at the mailing label on your copy of the NEWS, taking particular interest in the number which shows the expiration date of your membership as the middle entry of the top line. I suggest you get into the habit of looking at it each time you receive your NEWS, and give yourself plenty of leeway in renewing. U. S. renewals go to the manager for the call area having the same number as your own call sign; foreign renewals are to be sent as shown on page 31 of this issue.

ONE LONG LETTER CAME FROM STAN WERNICK, W5ZF. Stan made several suggestions as to what 10-10 or its chapters might do to sustain interest in 10 meters and in 10-10 itself. The suggestions are worth considering, and I'll mention them to others. One point that Stan commented on was that his contacts during the past four years were mainly high 10-10 numbers, and that the proportion of members with low numbers who actually get on is low.

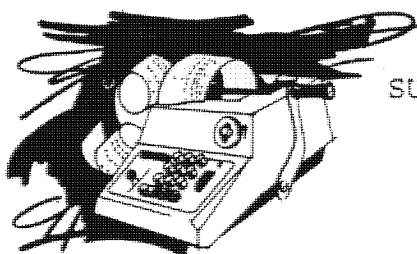
I think that Stan's observation is one that many of us make. I noticed that myself two or three years ago, gave it a lot of thought, and even did some checking in my card file and on the lists I had submitted for Bars. I concluded that while it was quite apparent as a phenomenon, it really wasn't all that peculiar. Hams' interests do change over time; moreover, 10-10 has been around more than twenty years, now, and it is inevitable that the lower numbers include many who are now Silent Keys. What Stan was really getting at, however, was the extent to which the scarcity of lower numbers he had observed reflected a falling away from the activities of 10-10. That's a concern of mine, too. Anyone have some ideas?

That's about all for this time. If you have ideas, suggestions, gripes, or whatever, write me. I guarantee that you'll have a captive audience.

Howard



On the Thames in London, you will find H.M.S. Belfast home of GB2RN, 10-10 #25937. See the article on page 3 of this issue.



FROM THE TREASURER
GERRY GROSS - WA6POZ - 21274
SUMMARY OF SECOND QUARTER 1983 - 1984



| | INCOME | | EXPENSE | |
|---------------------------|--------|---------|--------------|--------|
| | | QUARTER | YEAR-TO-DATE | |
| | 83-84 | 82-83 | 83-84 | 82-83 |
| Revenue (all sources) | 8,385 | 9,574 | 16,428 | 17,804 |
| Expenses: | | | | |
| Bulletin, Rosters, etc. | 2,958* | 5,396 | 10,021 | 13,057 |
| Regional Managers | 510 | 759 | 1,334 | 1,425 |
| Officers & Directors | 0 | 35 | 0 | 139 |
| Other Managers & Services | 170 | 711 | 265 | 952 |
| Total Expense | 3,638 | 6,901 | 11,620 | 15,573 |
| Excess (Loss) | 4,747 | 2,473 | 4,808 | 2,231 |

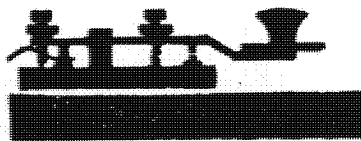
* Does not include billing for the Fall issue of the NEWS.



500 BAR

| | | | |
|------|--------|------|--------|
| 1460 | KI3D | 1469 | N4DVL |
| 1461 | WØCON | 1470 | K3DBM |
| 1462 | VE3BYH | 1471 | KA3GMP |
| 1463 | W5ZF | 1472 | W1IIP |
| 1464 | N8CKP | 1473 | KF6CN |
| 1465 | K2CYX | 1474 | N2DNO |
| 1466 | NØDWU | 1475 | KA5GAO |
| 1467 | DL5BAS | 1476 | N6BVQ |
| 1468 | N4DRC | 1477 | WA4ZNU |





10-10 CW QSO PARTY



RESULTS
1983 FALL CW QSO PARTY
SCORED BY:
MUSIC CITY U.S.A. CHAPTER
NASHVILLE, TENNESSEE

Final results of the Fall CW QSO Party are as follows. A total of only 97 logs were received. Most of the logs were well prepared which made our job of checking much easier. Also no logs were disqualified. We were suprised that we did not receive more logs, but most of the ones that we did receive reported very poor propagation. Only one QRP log was received and this was from a novice. We hope all the winners enjoy their certificates

Again we from the Music City U.S.A. Chapter, were honored to be the Judges for this contest and we wish to thank all the contestants for submitting such well prepared logs.

73"s and thanks to all.

Don Perry, Sec.

K4E2S - 10X 24789

Music City U.S.A. Chapter

TOP FIVE

WB6FZN/4 - 84/145
KC5CP - 78/123
AD5Q - 58/102
W6LLV - 53/ 97
WB4UKA/5 - 54/ 84

DX

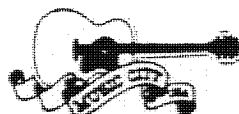
WB7EHU/KH2 - 35/37
PY2DBU - 29/56

QRP

KA4TLC/N - 6/13

CHAPTERS

| | |
|-----------------------|--------------|
| 1. HOUSTON SHOT | 16 - 424/763 |
| 2. POSSUM TROT | 9 - 261/467 |
| 3. TROTTERS & PACERS | 9 - 157/278 |
| 4. FT. McHENRY | 10 - 114/224 |
| 5. SKY BLUE WATERS | 12 - 99/172 |
| 6. BAY AREA | 5 - 92/172 |
| 7. OUTLAW | 2 - 61/ 92 |
| 8. CRAZY EIGHT | 2 - 38/ 65 |
| 9. C. A. T. T. | 2 - 36/ 61 |
| 10. MO-KAN | 2 - 23/ 34 |
| 11. CITY OF ROSES | 1 - 17/ 34 |
| 12. BLUE BONNET | 1 - 17/ 30 |
| 13. LIARS | 1 - 16/ 30 |
| 14. TWIN TIERS | 1 - 12/ 24 |
| 15. NOR'EASTER | 1 - 11/ 18 |
| 16. CITY OG ANGELS | 1 - 11/ 17 |
| 17. REPUBLIC OF TEXAS | 3 - 8/ 16 |
| 18. MUSIC CITY | 1 - 8/ 15 |
| 19. MINUTE MAN | 1 - 7/ 10 |
| 20. CRATER LAKE | 1 - 6/ 8 |
| 21. CITY OF LIGHTS | 1 - 4/ 6 |
| 22. BROOKLYN BRIDGE | 1 - 3/ 6 |



1 st CALL AREA

W1TAM 11/18
K1SVP 7/10

2 nd CALL AREA

WA2KWC - 42/73
WB2KEL - 33/53
W2KRK - 27/48
WB2SXT - 16/31
WA2SSH - 15/29
W2VHX - 12/24
WB2DLT - 11/22
K2HLC - 9/18
W2GSA - 8/16
KB2LG - 5/10
WB2STV - 7/9
N2DNY - 3/6

3 RD CALL AREA

KA3JMU - 29/49
W3DCN - 23/43
N3BNA - 16/30
WB3PSB - 13/26
KA3BCP - 13/26
W3JZP - 12/24
W3FQN - 12/23
WB3HAH - 11/22
WA3GLQ - 11/22
K3TUJ - 10/20
KA3AVB - 9/16
KC3DD - 5/10

4 th CALL AREA

WB6FZN/4 - 84/145
W4GRO - 45/78
KU4W - 44/77
N4DWU/4 - 24/43
KF4W - 20/40
KE4CA - 18/37
K4YFH - 16/27
N4EWG - 14/26
N4VM - 12/21
N4DTB - 10/21
WB4DMT - 8/15
KA4TLC/N - 6/13
W4NWP - 5/9
W4KM - 4/8
WA4SFN - 4/8

5 th CALL AREA

KC5CP - 78/123
AD5Q - 58/102
WB4UKA/5 - 54/84
WA5JDU - 47/66
WA5NIC - 21/41
W5VNB - 21/40
WB5DBT - 20/40
ND5F - 20/40
K0PVI/5 - 18/34
KA5OZE - 18/34
WB5IGG - 16/32
K5EST - 16/32
KD5GM - 16/31
WA5RNV - 17/30
K5HOY - 15/30
KC5M - 14/28
N5GNH - 14/26
WA5HZM - 13/26
WB5JAN - 13/26
AD5F - 13/22
KB5VV - 4/8
KA5BBP - 2/4
KA5EXN - 2/4
K5UCV - 1/2

6 th CALL AREA

W6LLV - 53/97
K6EID - 33/60
W6TKF - 23/45
W6FWK - 15/29
WA6IVY - 10/18
WA6BCN - 11/17
KJ6Z - 7/14
N6FZS - 7/14

7 th CALL AREA

K07B - 17/34
KM7B - 9/17
W7UFM - 4/8

8th CALL AREA

W8JSM - 20/33
W8PJY - 16/28

9 th CALL AREA

KW9O - 19/34
KC9NJ - 4/6

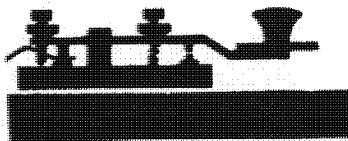
0 CALL AREA

KX0A - 22/32
N0AOZ - 19/32
N0DBG - 17/29
WB0DML - 8/15
W0EI - 8/14
WB0UVD - 6/12
KX0S - 4/8
NA0J - 4/8
W0IZV - 3/6
KA0PJP - 3/6
N0ADJ - 3/6
WD0BXU - 2/4
KB0CQ - 2/4
WB0RHR - 1/2
WB0RCC - 1/2

10-10 INTERNATIONAL NET SPRING CW QSO PARTY

By: Harry Syring, WB1FTQ
Chairman, Rules & Ethics

Starts: 0000Z (UTC) June 2, 1984
Ends: 2400Z (UTC) June 3, 1984



Ten-Ten QSO Parties are open to all amateurs but only paid-up members are eligible for awards or chapter assignment of scores. They are conducted to encourage Ten-Meter operation and interest in the Net. Non-members may use numbers collected to qualify for membership; members use them for awards.

RULES

1. All contacts must take place between 28.0 and 28.2 MHz.
2. Exchanges: Callsign, name, city, state, and 10-10 number.
3. A station may be counted only once.
4. Single operator stations only are acceptable.
5. CW and RTTY modes are acceptable.
6. All Contacts must take place within the 48 hour contest period.
7. QRP class limit is 10 watts output.
8. Logs must be kept in UTC (Zulu Time).
9. A Dupe sheet is required of all participants submitting logs.
10. Chapter assignment of scores may be only by a paid-up member, belonging to that chapter as a local member, and able to work that chapter Net via groundwave from the location of the station working the contest.
11. Illegible or improperly submitted logs will be rejected. See below for log submission requirements.
12. Failure to comply with any of these rules or their intent may result in disqualification.

SCORING

1. Two points for each contact with a 10-10 number exchange.
2. One point for each contact without a 10-10 number exchange.

AWARDS

First place certificates and first place QRP class certificates to all U.S. call areas, KL7, KH, all VE Districts, So. America, Central America, Caribbean (including Bermuda), Europe, Africa, Asia, Australia, New Zealand and the South Pacific. Individual and Chapter scores are published in the NEWS.

LOG SUBMISSION

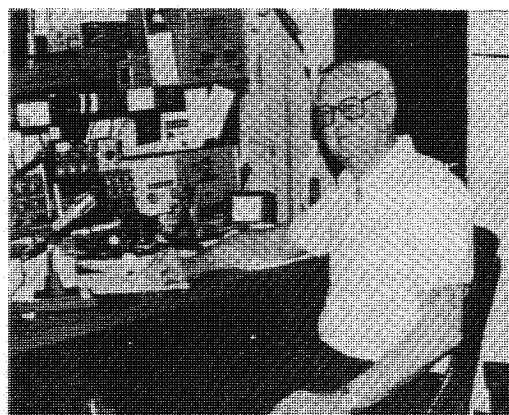
Logs are accepted from 10-10 members only and must be legible, in UTC, and complete. Each line entry must show Callsign, date, time, name, QTH, and 10-10 number (if any). A Cover Sheet is required showing your name, callsign, QTH, 10-10 number, membership expiration date, chapter assignment, total contacts and total points claimed. Please indicate if QRP and list power out. A Dupe Sheet must accompany all logs. Logs must be postmarked no later than July 1, 1984 and mailed to: Castle Craig Chapter, C/O Alan Kaiser, N1API, 194 Glen Hills Road, Meriden, Conn 06450.

Next Contest: Summer Phone QSO Party - August 4,5, 1984

SILENT KEYS

| | |
|---|---|
| 436 K6DQA Hillis R. Hauck, Sr., Upland, CA | 10537 W3MDV Wayne A. Stenback, Houston, TX |
| 2463 KB4EO J. D. Weatherly, Lobelville, TN | 10967 W6MPG Wesley R. Perry, Santa Barbara, CA |
| 5854 K6UQ John B. Pomeroy, Inglewood, CA | 14037 VE3YY Arthur J. Vivian, Burlington, ON |
| 6030 K4BLH Armand M. Fischer, Tequesta, FL | 15872 W6EJA Charles P. Henry, Richmond, CA |
| 6759 VE7AEX Larry Crowcroft, Shawnigan Lake, BC | 16514 W2RXS John L. Ebell, Pennsville, NJ |
| 6800 W7MSI Elmer R. Wright, Tacoma, WA | 17034 K9THM William E. Tarte, Rantoul, IL |
| 7543 W7JFV Sheldon J. Pettibone, Ventura, CA | 18122 WB0WSY Frederick C. Dewey, Lincoln, NE |
| 7732 W8PK Robert J. Banks, Grand Rapids, MI | 20465 WD5HTL Nevette Gardebled, New Orleans, LA |
| 7863 WB2QAX John M. O'Neill, New Hartford, NY | 21336 W6DFM Roy O. Ackerman, Lomita, CA |
| 8970 W3SCS Burton W. Jacobs, Mount Airy, MD | 26220 WD4IYA Charles L. Crockett, Southport, NC |
| 9217 W4LUK Arthur C. Lane, Winter Park, FL | 27606 VE1BHF Wilbur F. Ruggles, St. Steven, NB |
| 9683 K2PI Kenneth P. Haywood, Pennsauken, NJ | 28183 W1NAN Lester J. Shuman, N. Dartmouth, MA |
| 10071 W8JUP Gilbert B. Heaton, Harrisburg, NC | 29737 W4OYJ Walter E. Ramsey, Bennettsville, SC |
| 32811 KA8DMC George E. Spengler, Cincinnati, OH | |

You all remember Roy Ackerman, W6DFM #21336. He was 10-10 Net Control for a long time and also served as Supply Manager for 10-10 International. Roy dearly loved his ham radio hobby and was very active in radio clubs and fraternal organizations. Ill health had caused him to become inactive for the past couple of years.



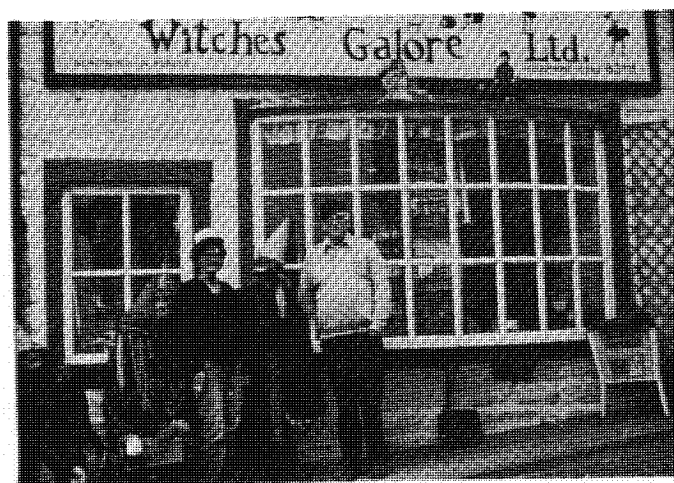
We will miss our good friend Hillis Hauck, K6DQA #436. He was originally Licensed as W8ZUI in Michigan. His interest in 10 meters dates back to 1946. In 1952 he moved to California and became K6DQA. He was one of the first to join with Irv Hunter, K6PWO when 10-10 was being organized. Hillis enjoyed CW and traffic handling but always made himself available when and where needed. He shared 10-10 activities with his wife Connie, K6EXQ and was Friday Net Control for 10-10.

Our friend John Pomeroy, K6UQ #5854 served as Roster Manager for 10-10 International until just recently when failing health caused him to resign that position. He was a very prominent ham and was widely known amongst the old timers. John was active in many radio organizations, especially in the QCWA where he had served as President of the Southern California Chapter.



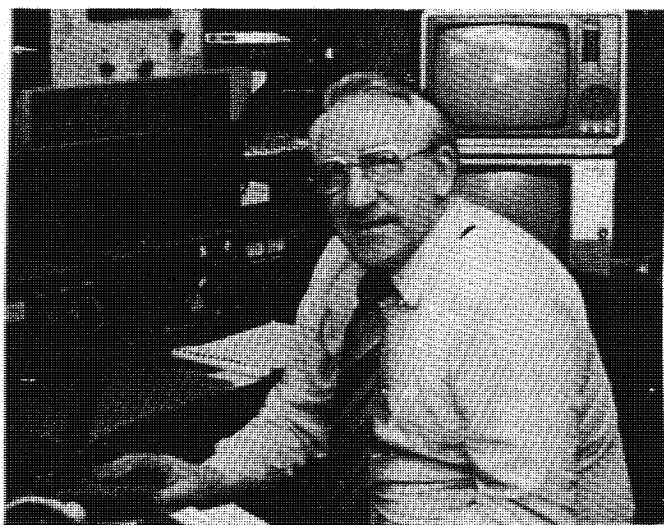


On 9 October 1983, Mad Swingers Society, the Swedish Chapter of 10-10, had a meeting at Mora, Sweden. A special thanks to Eddie, SM4KMN #35020 who welcomed them to his log cabin. Top Left (L-R) Eddie, SM4KMN; Lars, SM4LEB; hanging in the air is Stan, SM5KAS; Bosse, SM4JWI; Hans, SM4NLL; Tor, SM4KRT; Gus, SM4DLS and Per, SM4JHA outside at Eddie's cabin. Top Right (L-R) Serving refreshments is Bosse, SM4JWI then Hans, SM4NLL and Tor, SM4KRT. On the Left (L-R) Ola, SM5DYC; Gus, SM4DLS; Lars, SM4LEB and Per, SM4JHA in the radio corner of the cabin.



Introducing Petr Nedbal, OK1PN #36907. Petr lives in Praha, Czechoslovakia and has been a member since February 1983. He enjoys looking for new 10-10 numbers.

Guess who? Jim, WD8DSR and "Whats her name" Georgia, KA8QME from West Virginia visiting the "Pendlewitches" and Joe and Kit Simpson in Darwen, England. Photo courtesy G4JS.



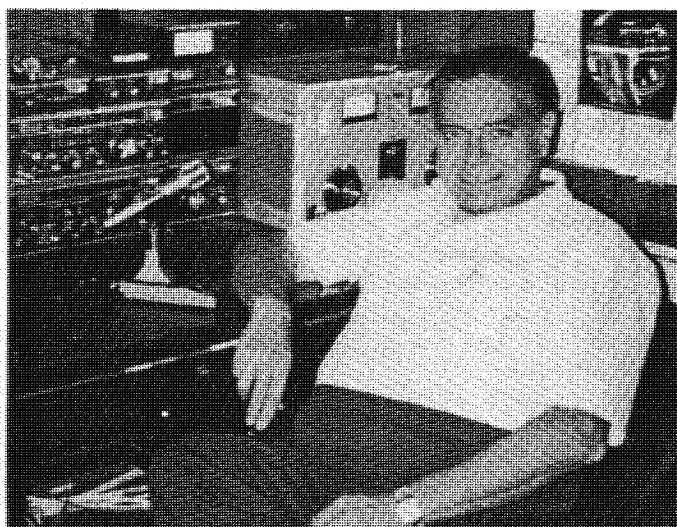
Ben Croly, EI8EQ #38328 is from Dublin, Ireland.



Gary Jaeger, DF2RG #21771 from Schwandorf, West Germany.



Ronnie, ZS6AHZ and his XYL are from Nelspruit, South Africa.



Jose, LU2DX #36997 lives in Buenos Aires, Argentina.

CHECK 28.050 MHz ON THE HOUR, 28.150 MHz ON THE HALF HOUR!

Hearing South American CB-type 'phone stations in the c.w. portion of the ten-meter band brought to mind the main reason for TEN-TEN's existence: To increase the amateur service's usage of the band and to discourage encroachment by others. Being adjacent to the 27 MHz wasteland, the lower part of the c.w. portion is the most vulnerable.

This consideration, plus the desirability of attracting novices and technicians into TEN-TEN, are my main reasons for suggesting that ten-tenners, as well as those desiring to qualify for a ten-ten number, listen -- and if nothing is heard call CQ TEN/TEN -- on 28.050 MHz on the even hour UTC and on 28.150 MHz thirty minutes after the even hour UTC. There would be no net and no net control. The system could be used at any time of the day or night.

Dex Anderson, W4KM, #6271

Greetings from the Down Under Chapter! On Sunday, 18 September 1983, an afternoon tea was held to welcome Sandra, VK4NUE and her OM Phil. The meeting took place at the home of Shir1, ZL1BI in the Waitaker Ranges, west of Auckland, New Zealand. In the photo below, are those who attended: Front Row (L-R) Sven, ZL1BVS #23498; Simon, ZL1AIB #23468; Ian, ZL1BFB #22247; Jack, ZL1KQ #23471 and Dave, ZL1AFK #19086. Back Row (L-R) Brian, ZL1LE #23497; Bert, ZL1BXW #23518; Peter, ZL1BVJ #23492; Bob, ZL1CE #23499; Sandra, VK4NUE #26430; Mark, ZL1TB #12264 and Shir1, ZL1BI #23489.



The Arizona Sunset (Thunderbird)-VK4NUE dinner in honor of Sandra's Charter certificate and her welcome to sunny Arizona. Photo Above Left (L-R) T'Bird/AZ Sunset Charter members: Van, KBØPK; Norm, W6GSW; Roy, WB8JET; Sandra, VK4NUE; Dennis, KA7COQ (CH); Don, W7LET (CM) and Willie, WB7VZI, 7 Call area Mgr. Above Right (L-R) Sandra and Dennis, KA7COQ. Below Left (L-R) Roy, WB8JET and Sandra. Below Right (L-R) Roy, WB8JET (Ass't.CH); Dennis, KA7COQ (CH) and Don, W7LET (CM).



A warm Arizona welcome to Sandra, VK4NUE and her OM Phil! Below, during a November reception in Phoenix for Sandra and Phil Murray, are some of the local 10-10 members. (L-R) Jean, XYL of K2BGF; Ron, WB7ADO, former 7 call area Mgr.; Jack, K2BGF; Sandra, VK4NUE; Mel, WB7BQP, CH Grand Canyon State Chapter; Bobbie, WB7NUU, former 7 call area Mgr.; Phil, OM VK4NUE and Willie, WB7VZI, 7 call area Mgr. Others attended but could not remain for photo. During their visit to the "Valley of the Sun", Sandra and Phil stayed with Bobbie, WB7NUU and her family and managed to take in a few points of interest in Arizona, including a venture south of the border into Nogales, Mexico.



...at the Grand Canyon

...Old Tucson

...shopping in Mexico



In Kansas, MO Sandra and Phil were welcomed by the MO-KAN Tenners. Everyone enjoyed a pot-luck dinner and Sandra received an honorary membership to the Chapter. Above Left (L-R) Joe, WØONQ #34917 and Bob, KXØA #25183. Center (L-R) Don, KBØON #29849, Sandra, VK4NUE #26430 and Stan, KSØN #31508. Right (L-R) Don, KBØON and Ed, WAØBOE #15897. The pot-luck was served at the home of Bernie, WBØVHE and photos were from Al, WAØHQQ.



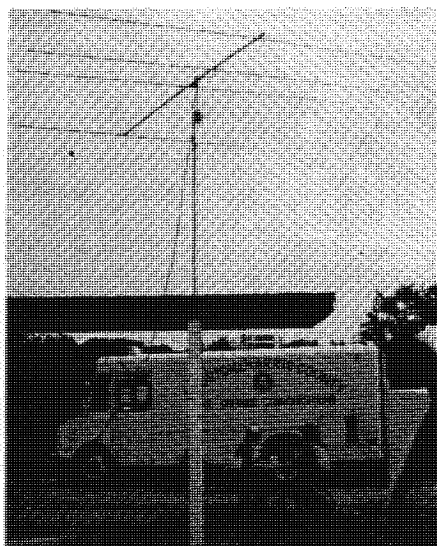
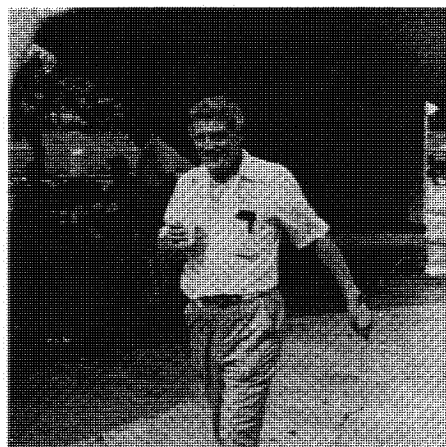
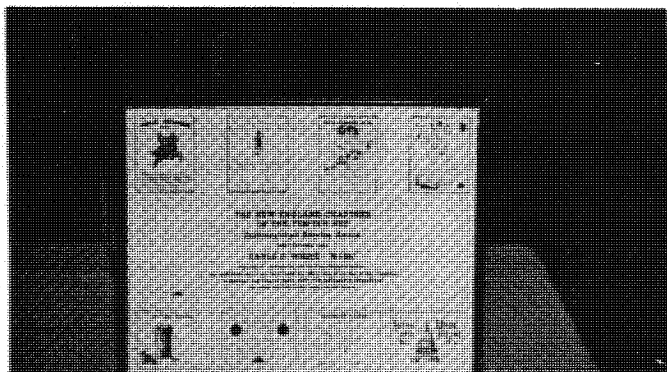
From the City of Roses Chapter, we see Sandra and Phil visiting with 10-10 members in Portland, OR. Above Left (L-R) Sandra is seated with Ed, KI7Z (CM) with activity director John, KC7WP and Chapter Head Lee, KA7FEH looking on from behind. Above Right (L-R) Phil, Sandra and Lee, KA7FEH. Below Left Sandra attempting to get Ed, KI7Z busy with his duties while he provides his typical response. Below Right Sandra is seated with City of Roses husband/wife team Cary, KA7KDB and his "Extra" wife Fran, KA7KIS.



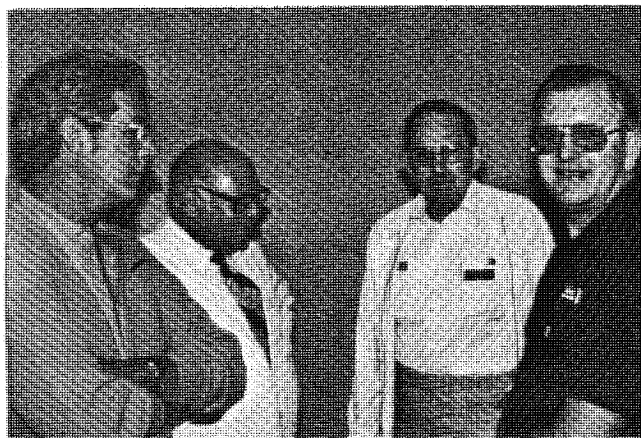
While in the Sacramento, CA area, the River City and Golden Bear Chapters had a luncheon with Sandra and Phil at the "Hangar 3" restaurant in Rancho Cordova. Many of the prominent local 10-10 members attended. In the photos above on the Left (L-R) Bob, WD6DFB; Sandra, VK4NUE and Phil, WB6NYM. On the Right (L-R) Clockwise from the left: Andy, WA6KCU; John, N6JM; Betty, KB6AN; Bill, KB6YX; Kay, WB6POQ; Phil (OM VK4NUE); Alice, WB6AOJ; Mae (XYL) and Dick, W6ANK, 6 Call area Mgr. Photos courtesy Bob, WD6DFB.



The Minute Man Chapter held its Fall eyeball luncheon at the New England Oyster House in Lynnfield, MA on 22 October 1983. A gathering of 42 honored Earle F. White, W1NC by presenting him with an award, representing all of the chapters in the First District, for his dedication and distinguished service. Needless to say he was surprised and pleased. Top Left (L-R) Sonny, K1SVP; Earle, W1NC and Newsy, W1FFT. Top Right Earle thanking the group for this very unique award. Below Left is the New England Chapters award and on the Right (L-R) Babe Conley, K1JVB; Dot Conley, K1MDX and Tom Thibault, K1IK



Above Left: Refreshments were plentiful and cold at the Houston Hambash '83 as illustrated here by Bob Libbers, WB5FII #138, Chapter Head of the Houston Shot Chapter. Portable operations (center) were setup for the occasion at Bear Creek Park, Houston, TX. The event was held on the 5th and 6th of November 1983 and all stations making contact with KØPVI/5 were offered a special event certificate. Operation for both days was on 10 meters. On the Right, attempting to stay dry and cheerful, is Stu Lamkin, WB5IGG #11758, Certificate Manager for the chapter. This event is sponsored annually by the Houston Shot Chapter.



John (NK5K), Paul (W5NDK), Chuck (KC5FX) and Cliff (WB5THD) at the special breakfast honoring Sandra & Phil Murray. Members from the RTx, Cowtown, Cowboy and Lone Star Chapters were on hand to extend a big Texas 'Howdy' to the Australian visitors.



Doug (W5OPZ), Phil (OM VK4NUE), Chuck (KJ5L), Sandra (VK4NUE) and Jerry (WB5TXP) at the RTx breakfast honoring the visit of Sandra and Phil.



Sandra (VK4NUE) appreciates the wit of Jim (K5TGB) with Tom (W5GVP) in the background looking on.



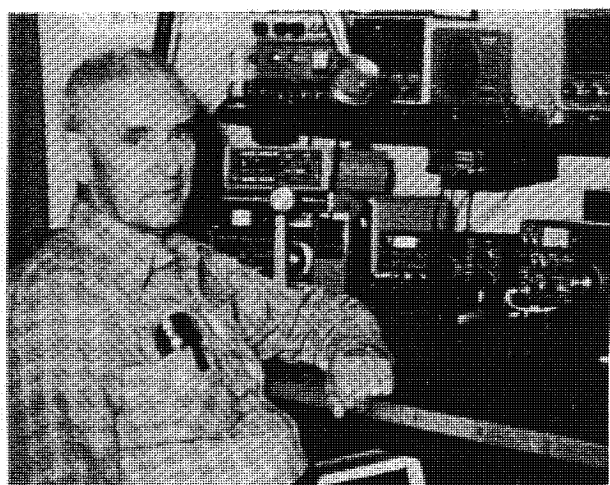
Phil (OM VK4NUE) receives honorary Texas citizenship papers from Chuck (KJ5L)



Joe (KC5NA) Dave (KD5EE) and Tom (WD5BFO) at the RTx monthly breakfast meeting.



Grace Dunlap, K5MRU #218, 5th Call Area Manager and "Col." Jack Oxley, WB5RQM, #15655. Jack, a Confederate Air Force Colonel, was participating in AIRSHO 83 at Harlingen, TX. They had an "eyeball" QSO at Grace's home in La Feria.



Meet Jerry, W0NNH from Cottage Grove, MN. This fine station is heard regularly on 10 meters. An old-timer, Jerry is 10-10 #3846.



Shown above is Bill, W6AYI and his pet. This beautiful cat weighs in at 20 pounds and is appropriately named "Ten-Ten".



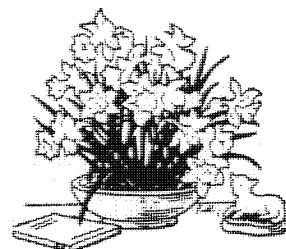
Chuck Harmon, KJ5L #24979, RTX CH; Jack Oxley, WB5RQM #15655, Ex CM & CH, RTX; Sandra Murray, VK4NUE #26430, Brisbane Sun Valley CH & CM and Doug Lundstedt, W5OPZ #20350, RTX CM. This happy group standing before the US, Australian and Texas flags was celebrating Sandra and her O.M. Phil's visit to Dallas and the Republic of Texas (RTX) chapter. Photo was taken in one of Dallas' nicer restaurants in November.



At the Left is Robert, WA5JDU receiving a special Outlaw Chapter Propagator Award, from Herm, N5CNH, in recognition of the many 10-10 members he has qualified for the basic Outlaw certificate. If you will look at the Awards page, you will note that Robert is now #1 on the "Top-Ten" list. Congratulations!

CONNIE'S LETTER-

CONNIE HAUCK, K6EXQ
No. 19681
CHAPTER COORDINATOR



I hope that Santa was good to each of you and that you found your wishes fulfilled under the tree. I am sure that many of you have new toys that you are having fun with. Isn't it nice when you have a wife who is a ham and that gives you an excuse to give her all sorts of goodies that you really want?

If you are not getting your 10-10 NEWS you should notify your area manager and he/she will know what to do. Also if you have misplaced your 10-10 number contact your manager. I do not have the numbers other than in the roster as many of you do and to find a number I have to look at all the numbers in the roster and it is too easy to miss one. Chapters is my only business and those are the only records that I have.

Last time I forgot to mention the wonderful certificate guide that is put out by Jim/W4YHF. I refer to it so many times when I am putting the chapter chatter together. Sometimes an address or name is missing concerning a certificate manager and I can always find the information there. If you are at all interested in paper chasing this is a must. Contact Jim Beswick/W4YHF Rt. 5 Box 778 Owltown Mountain Ellijay, Ga. 30540. The complete directory is \$3.50 (DX \$5.00 US Airmail). There is a monthly update. Please contact Jim directly because this is his labor of love and not a 10-10 publication. Be sure to keep Jim informed of any new certificates or changes in the old ones. Since Jim also puts your net information in with your certificate information, it would be nice to let him know of your net dates, time and frequency.

Speaking of nets, Bob Wile/K8SPJ 804 Colleyville Terrace, Colleyville, Tex. 76034 publishes a net guide twice a year in the 10-10 NEWS. Bob can only do a good job if he has the correct information to put in the guide. Please check your listing to see that it is correct and if any changes need to be made let Bob know as soon as possible.

I was very disappointed to know that one certificate manager who had for some reason been replaced was returning applications to the sender rather than sending them on to the new manager. Whatever happened is not the fault of the applicant and they do deserve more consideration. There has been a problem with the Tower of London certificates being sent out but I understand that is being taken care.

There are many new certificates and updates to existing ones and I hope that all of you who have the required numbers, that is when C, HC or L, are active and especially in the lower part of the band so that our VK novice friends who cannot operate above 28.6 can enjoy the certificates with the rest of us. One charter re-5 charter contacts for the VIP and I have yet to work but one charter and he is ill and no longer on the bands. I can't see the point of having a certificate if you do not plan to issue it and some of the requirements make it next to impossible because of lack of activity of the charters other than to check into their own net. If you are giving charter numbers out of your area to help you with the promotion of your certificate, give some consideration to the area and try to see that each area is covered as best you can.

Conditions are not the best right now and I am encouraged to see the number of chapters who are working with just the locals. To me this is what it is all about but it is nice when out of area stations can check in. It is the ones who hang in there when things are not the best that gleam the most.

Because of conditions beyond my control I have not kept a close watch over the chapters to be sure that each reported at least once a year but with the new year this will be done. When you formed your chapter, you agreed to report at least once a year but some of you forget to do that. I will be reminding you if I have not heard from you and hope that you will take the time to let us know what you are doing. We like to know about you.

This is the part that I knew that I would eventually have to write but I had hoped that it would not be so soon. I am sure that as you made your way to this page that you realize that Hillis died Oct. 23, 1983 after a long illness. We were married 39 years 3 months and nine days. In some respects that is a long time but then again it seems such a short time for a happy marriage to end.

When we married I knew nothing about radio but in a couple of years I realized just how much it meant to Hillis. We made the move from Kentucky to Michigan and my nice china rode in the trailer but his only piece of equipment, a receiver, rode on the back seat. After we moved to California in 1952 I studied for my ticket and have enjoyed radio since then. I was off the air for part of the time but I was still active in club work and different organizations.

Hillis would be so happy to know how very supportive you have been of me. Your telephone calls, flowers, cards and notes with your chapter reports have been many. The prayer chain spanned the globe. Prayers are not always answered in the way that we ask, but I don't question God's decision. Let me say thank you from the bottom of my heart.

I hope that before you get this that I will be back on the air and will have taken the Friday 10-10 net back. I am so grateful to Bob/W6MDK for taking the net so long for me. I know there were others who filled in when he could not be there and I thank you too.

Several of the chapters have been kind enough to give me charters and honorary charters on your awards. I do not have the list before me and for fear of leaving one out, I will just say a blanket thank you and I will do my best to help promote your chapter.

My present plans are to be in Dayton in April and if it works out for me to be there I am looking forward to meeting many of you.

Thanks to you for your understanding when things have not gotten done as quickly as they should. I shall try very hard to make it up to you.

Until I see you on the air or in person my best to all of you for 1984.

73,

Connie/K6EXQ



"MEMORIES"
Foto by G4JS

El Dorado Park with Dorothy (xyl W6PGM) and Kit (xyl G4JS).

CHAPTER CHATTER

CASTLE CRAIG (K1WJL): Club participated in the SoPut Jamboree on the Air. We do appologize for the delay in getting the Flag of Conn. to you. We had unexpected delays in the printing. The Flag requires 25 contacts with Seal of Meriden holders. State side contacts start 1 Oct. 83 but DX can apply for Seal & Flag with contacts retro to start of basic. Cost \$.50 +SASE. MASSACHUSETTS MINUTE MAN (W1FFT): 42 members gathered to honor First District Vice-President, Earl F. White/W1NC. He was presented an award representing all chapters in the first district for his devotion and distinguished service far and beyond the call of duty. He was very much surprised and impressed.

FLOUR CITY (WA2JPE): Finally moved into our new house. Please note new address for Flour City, Sharon Shideler/WB2JPD 18 Pickett Lane Tallwoods Hilton, N.Y. 14468. HUDSON VALLEY HAMSTERS(KA2QYL): Off to a good start. Net will be 0030Z in winter and 2330Z in summer. Certificate requires 55 points + \$2 sent to N2BIN P.O. Box 2621 Newburgh, N.Y. 12550. LIARS(WB2MAN): Changes in Lairasville upgrades. Any one checking in nets will get 2 points toward the total and the upgrades to the Fibber will add 5 points and the Big Fibber is 10 with the Liarsville 15. See rules for 2 land QSO Party on another page. TROTTERS & PACERS(K2HLC): Seals for Basic now SASE. May reduce other seals later. Basic & seals request to WB2LLH/ John Drozowski 199 Old Forge Road, Jamesburg, N.J. 08831. Senior awards requests to K2LFG/Manuel and Winners Circle to K82LG/Irv. TWIN TIERS(WB2YWH): I will continue as certificate manager for Chenango Canal and W2VHX/ John will be certificate manager for the Twin Tiers. CRAZY EIGHTS(KA3AVB): 22 members took part in the Nov. QSO Party but only 3 submitted logs. Aggie/KA3BTH was the winner. Since the band is usually dead at our net time we are looking for ideas to promote 10-10 locally. WHITE HOUSE (WB3BMA): New certificates for Senator & Congressman on the way, please be patient.

ALL AMERICAN CITY(KC4LV): Net meets at 7:30 PM local time. CHATTANOOGA CHOO CHOO (K4JGD): Old chapter members 001-644 note re-activation. Station Master awaiting your upgrade Team members applying for basic remit only \$1 +2FCS for both. More infor for SASE to Paul Jenkins/W4UIQ 1 Mitchell Lane Rossville, Ga. 30741. CHOCTAWHATCHEE BAY (WF4X): Our certificate is alive and well. There was an error in the certificate directory. DEVIL'S TRIANGLE(WA4ZPX): Planning new upgrades soon so be on the look-out for them. DRUID CITY(N4AII): Have dropped Wed. nite net. 37 WAS certificates issued and each is an HC & IQ. DX award in the plans. OLD NORTH STATE (W4NJS): DX group frequency is 28,840 weekdays and 28,835 on weekends. PLEASE when applying for awards include call & 10-10 number. To omit causes delays & extra postage. ORANGE JUICE(W4DWN): Watch for a new upgrade soon. Some evenings we have more xyls on than oms. Keep it up ladies. POSSUM TROT(KU4V): Very active in CW contest with chapter member WB6FZN placing first overall. I am the temporary certificate manager. Bill Kelchner POB 142 Red Springs, N.C. 28301. MASON_DIXON(WA3SRE) John is the new CH. Net runs 5 hours per session with 55 to 91 checkins. SUN COAST(KA4DDY): Our chapter is saving stamps for KA4VZV/ Charles Meister 805 S. Evergreen Ave., Clearwater, Fla. 33516. Charles is in a wheel chair and enjoys stamps along with his radio. WIREGRASS PEANUT PICKERS(W4FYB): After earning 150 points, you may earn 1 point for each 25 additional points collected & you may earn 1 point for each LOCAL, HC,C or L that you work but you may count them only once.

BILLY THE KID(KA5AQT): Had special event station at The Whole Enchilada Fiesta and a special award was given for one contact. Made over 500 contacts. Certificate mgr. is Jim Silverthorn/KA5SEA P.O. Box 2312 Las Cruces, N.M. 88004. DALLAS COWBOYS (KASKAW): Recently had breakfast with the Cowtown net and also the Republic of Texas to welcome Sandra/VK4NUE and her om, Phil. GREEN COUNTRY(W5NNL): Wer are planning

to participate in the ARRL Field Day and invite all to join us. OUTLAWS(N5CNH): At S.A.R.C. Christmas we made WA5JDU/Robert a special contact. He is worth 18 contacts which will give you the basic and put you almost half way to the next award. REPUBLIC of TEXAS(KJ5L): New CH is Awards mgr. is Doug Lundstedt/W5OPZ 317 Independence Dr., Garland, Tex. 75043. We have been averaging 25.7 checkins per net. TEXAS BURNERS of the MIDNIGHT OIL(WB5MJK): Members been going mobile to checkin the net and then meet at a local eatery for food and fellowship.

BAY AREA(W6ANK): We are on Sundays at 2100 GMT 28.775 for certificate chasing. CHANNEL ISLANDS(KW6H): Net is now QRT. Current certificates no longer issued after 2/15/84. Will issue numbers if requested. Will honor all upgrades until supply is gone. Series 2 of the certificates due soon. Will announce on 10-10 net. FRESNO(WD6AIY): Bob is the new CH and Jerry/K6PKO is the new CM. Write Jerry at 2035 E. Gettysburg Fresno, Ca. 93726. NORWALK KEYSTONE(KD6JC): New CM is Wayne/WA6KFT with the same address as before. Badges are available for 100 Keystone members with date of certificate or if fugitive is captured he/she is equal to 25 of the 100 contacts. Adds two points & is IQ. RIVER CITY(WD6DFB): Joined with Golden BEars to honor Sandra/VK4NUE & her om/Phil. Reno folley upgrades available. 100 pts to include 5C+5FS adds 5 pts. Inquire about others.

CASCADE(WA7OVP): We are pleased at the request for certificates when we consider how long we have been on the air. Join us on the net soon. CITY of ROSES(KA7FEH): New upgrade, Noble Rose for 500 pointsfee is \$3 no stamps. Must hold Regal Rose & the points for RR can be used for NRose since contacts are after 5/1/81. LILAC CITY(K87LH): Chapter is actively raising funds for baby of W87OGT, a charter member who now lives in S. Carolina. We are concerned with decreasing propagation & lack of interest so we have as much social activity as possible. SILVER DOLLAR(KD7FC): We are very active and meet weekly on 28.777 at 9 PM pacific time on Sundays. THUNDERBIRD(KA7COQ): New certificate Arizona Sunset certificate basic 30 points \$2+2FCS/DX \$3. CM W7LET. Thunderbird WAS can be used as wildcard with a maximum of 2. Net is on Tues. 0200Z on 28.575 and DX is welcome. Had several out of area visitors.

BREAKWATER(N8DCQ): CM new address is Jerry Terpetra/KC8KF 782 Mayfield Ave., Holland, MI. 49423. CINCINNATI AREA TEN TUNERS(W8PJY): W8NDJ gives us the solar flux high & low each week so we know what to expect on the band. The Dayton Hamvention may not have room for our 10-10 meeting next year. CROSSROADS VILLAGE(KG8S): We have been enjoying good nets since Oct. The first YL & OM to send in 5000 pts became charters & they were Susan/KA1CAD & Dave/WD4MPG. May have something for 10,000 points. GREAT LAKES(W8HIU): New address for chapter 6762 Red Cedar Lane, Union Lake, MI. 48085. TRI-CITY(WD8QEA): Because of our frequency we get very few checkins and local support is low so we have decided to drop the certificate but to continue with the net.

CHIEF ANDERSON(WA9FTO): Still active and waiting for better openings. New awards program under study. MILWAUKEE GUARDIAN(W9MZZ): Wally/N9DCG has been visiting Hans/ZS6AGM in Johannesburg on a return visit. They are old friends and enjoy the trips.

CLIFF DWELLERS(KØWZX): I have been sending in reports for the chapter but they have not always appeared as regularly as I have sent them. W8ØDCX #9577 has been the choice for the presidency of the Pueblo Ham Club for 1984. COLORADO BIGHORN (WØPEL): If you have had your certificate application returned, please send again to the new certificate manager Mike Baird/WØRSR 1300 Niagara St., Denver, Co. 80220. COLORADO CENTENNIAL(NØCKW): Good band openings during the last quarter of 1983. Some nets had as many as 25 checkins. GATEWAY(WØERZ): Note mention in another section about our chapter. LEWIS & CLARK (K8ØRM): Correction on our net frequency, it is 28.840. If you need a Montana cnotact, you will find us on the Lewis & Clark net. SKY BLUE WATERS(NØACD): New certificate manager is NAØJ/Ron. Our Sunday AM net at 11 AM CST on 28.715 is now a permanent net. There are 22 Ten Thousand Lakes awards who are IQ for the basic Sky Blue Waters certificate. MO-KAN TENNERS (WAØHQQ): Delighted to have had Sandra/VK4NUE for an eyeball where we had a pot-luck in her honor. We presented her with an honorary MO-Kan membership. WAR EAGLE(WBØRNM): Additional net on 28.615 Thurs. 0100Z.

BORINAGE(ON6XN): Our chapter is growing both locally and in other countries. Basic requires 30 points or IQ cost \$3. to P.O. Box 23 87000 Mons Belgium or to ON6XN Bouchez Michel, Residence des Agaces 40, 7310 Jemappes Belgium. GOLD COAST(VK4VAS): Thanks to Peter/VK4VLX who has been acting certificate manager and net control while Jack & Alma have been on a mobile vacation. Would like to hear more charter members of other chapters check in below 28,600 as the VK novices cannot go above there. JOHNNY CANUCK(VE2BQN): We are listed incorrectly in the net guide. We meet Sundays 28,930 at 1500Z. Point value on our certificates have changed to the following. L is 3, FS,FC or FP is 3 and the Big "O" is now 6. We had a nice visit from Bernice/N9CDO and her OM. We made Bernice an honorary member. LAKE GENEVA(HB9OP): US chapter members have heard indirectly that Ted Vogel/HB9OP, CH & CM was involved in an auto accident while traveling in Kenya and was flown home to Geneva area. Best wishes for a speedy recovery. MAD SWINGERS SOCIETY(SM4DLS): We recently had a 10-10 meeting in Mora where we guested SM4KMN and worked 11 charter stations on the net from his log cabin. Note new chapter head. We are on 28,500 to 28,600 during our local night time and can hear the 6,7,8, KL7, KH6 and VY1 stations about 2200Z. If you will turn your antenna to the north we would have a better chance to work you. NORTH SEAS(ONSAB): All of the North Sea awards have been issued, please do not send for the basic. We will continue with the upgrades and the Grand North Sea award. Please do not send checks for the awards because it cost more to get the money on your account than the amount indicated on your check(5 bucks each check cost for an overseas check controlled) so send cash or same value in IRC. Jack/ONSAB is in Amman/Jordannie for his job (international Red Cross) and is JY6ON. Jack will try to be on 20 CW. OISE VALLEY(F3CY): We have much qrm from the U stations. We continue to receive applications from many different countries. ORTAGO "45 SOUTH" (ZL4BE): We have ten new members all from ZL4. Many openings to Europe and many applications arriving for the Century Award. PENDLE-WITCH(G4JS): We have basic certificates in 49 states but despite many contacts with 10-10ers in South Dakota we have not had an application from there. Our certificates are really worth having so hope that at least one of you from S.D. will send for one so that we can have all 50 states represented. RHONE ALPES(F6CSK): New certificate & vice chapter head is F6CXB/Paul Bassiri Fays, F69100 Villeurbanne France. Presence on CW net or to any charter mobile will replace one contact with either F6CSK mobile or the Radio Club of Bourgoin. All and especially NOVICES are welcome on the CW net Wed. 28,150 at 1600 UTC. Nothing heard on RTTY on Thursday but the local Sunday net is very active. TARCHANG(JA3XRC): My 10-10 # is much in demand here when I use the hand held transceiver with 300mw SSB/CW. It is for ten meters and local cost about \$100. TAST(JA2DYI): We have discontinued our net because of few checkins. We may reinstate. LONDON(G4CLK): Hopefully the long overdue certificates will be out to you by the time that this reaches you.

Also reporting were the following: Murphy's Law (KA1CAD); Nor'Easter (W1ZQR); Ocean State (WB1CRR); Mohawk Valley (KK2B); Anthracite Breaker (WB3AVE); Delaware Valley (K3LBM); Chapter of the Carolinas (N4AYJ); Old Dominion (WB4UOI); Palmetto (NV4I); Tidewater (WA4BGC); Music City USA (W4WHM); Treasure Coast (K4KAH); Bauxite (KSNE); Blue Bonnet (WA5JDU); Dallas County Lone Star (KB5VB); Miss. Gulf Coast Light House (NSAQJ); Bigfoot (WB6SRQ); Golden Bear (WB6POQ); Orange County (WA6HEL); Chief Seattle (W7HUL); Crater Lake (K7TDX); Golden Spike (W7ZKL); Northern Nevada (W7ABX); Wyoming 10-10 (KB7NL); Blackhawk Valley (KB9YX); Parrot (KB9IU); Senator Dirksen K9EHP); North Star (KØSE); Alaska Iditarod (KL7JGN); Canterbury ZL3 (ZL3BM); City of Melbourne (VK3CBS); Down Under (ZL1TB); Edmonton Area Ten Tanners (VE6ATT); Scarborough Bluff (VE3RG); Surry Dogwood (VE7CLC); and Yukon Goldpanners (VY1BQ).

NEW CHAPTERS

OKIE RELAYS(KA5LGN): SSB net Fri. 0200Z 28,635 and CW Fri. 0200 28,135. Basic certificate requires 75 points including 2CL or 3CH. Fee is \$3. CL=10; CH=8; 1st USA=9; HC/HM=7; FS=6; FS/FP=5; OM/YL=4; DX=3 & O=2. CM is WA5EXY/Alan C. Hedrick Box 154 Texhoma, Okla. 73949.

SPECIAL EVENTS STATION KB5T
Billy The Kid Chapter 10-10

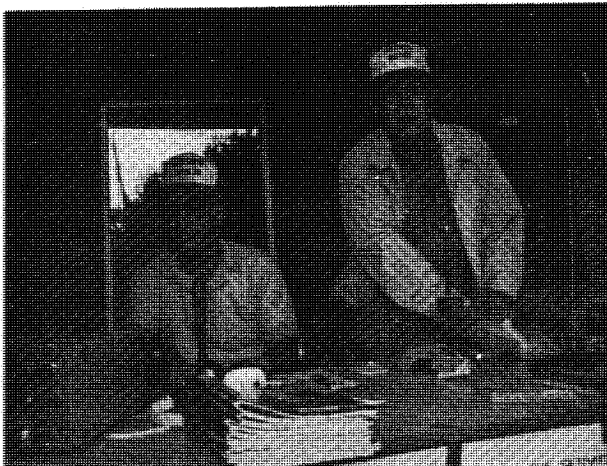
Ray, KA5AQT #34685 CH

Frank, N5BVQ #35822



LAS CRUCES, NEW MEXICO

"CALL AROUND THE
 WORLD"

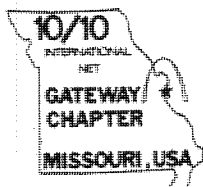


John, KC5PP #25012 and
 George, W5VIJ #15079.



Ken, KM5W #18837; Lee, KB5T #35829
 and Helen, WD5FMM #35823.

Billy The Kid Chapter participated in this Fiesta, as a special events station, and as reported by Stan Wernick, W5ZF, it was an outstanding success making over 500 contacts.



The Gateway Chapter passed another milestone on November 30, 1983, with its 600th consecutive weekly net session. This net meets every Wednesday at 8:00 p.m., St. Louis time, on 28,650 KHz. The members are looking forward to participation in the 700th net in September 1985.

Checking in for the 600th net were WA5JDU, W9ATF, WA9REW, WB6MHX, AG6G, KC6YZ, W0JFI, W0JGI, W0MQL, W0NPN, W0QX, W0ZGL, WB0CCF, WB0GGO, WB0JQA, WB0SMF, WB0VHH, WB0VRT, and WD0APK. CH W0ERZ was the net control. All who participated in the 600th net session received a commemorative award.

The Gateway Chapter has over 200 lifetime members, most of whom live within ground wave range of St. Louis, MO. Any 10-10 International Net member who works five Gateway members may apply to W0IEE for a handsome certificate.

10-10 NET GUIDE

SUNDAY

| CHAPTER | QTH | FREQ. | L/TI | ZULU | CHAPTER | QTH | FREQ. | L/TI | ZULU |
|-----------------------|-----|-------|--------|----------|---------------------|-----|-------|---------|----------|
| 1----- | | | | | 7----- | | | | |
| CITY OF MUMS | CT | 28745 | 1900ET | 0000Z-SU | CINNABAR MOUNTAIN | ID | 28830 | | 2100Z-SU |
| LOBSTER TRAP | ME | 28815 | | 1700Z-SU | EVERGREEN STATE | WA | 28950 | 0900PT | 1700Z-SU |
| MINUTEMAN | MA | 28150 | 1930ET | 0030Z-SU | GOLDEN SPIKE | UT | 28875 | | 2100Z-SU |
| S. NE. NUTMEG | CT | 28690 | 2000ET | 0100Z-Mo | WYOMING TEN TEN | WY | 28670 | 2100MT | 0400Z-Mo |
| 2----- | | | | | 8----- | | | | |
| ELECTRIC CITY | NY | 28790 | 1500ET | 2000Z-SU | CROSSROADS VILLAGE | MI | 28820 | | 1900Z-SU |
| MCHAWK VALLEY | NY | 28745 | 2nd Su | 1400Z-SU | MID-LIO | MI | 28820 | | 1900Z-SU |
| STATEN ISLANDER | NY | 28745 | 1100ET | 1800Z-SU | NOARS COUNTRY | OH | 28855 | 1300ET | 1800Z-SU |
| TWIN TIERS | NY | 28805 | 1300ET | 1800Z-SU | SARA'S BOX | MI | 28840 | 1600ET | 2100Z-SU |
| 3----- | | | | | STARK COUNTY | OH | 28800 | 1145ET | 1645Z-SU |
| ANTHRACITE BREAKER | PA | 28660 | 2100ET | 0200Z-Mo | 9----- | | | | |
| CRADLE OF LIBERTY | PA | 28695 | | 0100Z-Mo | LAND OF LINCOLN | NE | 28650 | 2000CT | 0200Z-Mo |
| FORT MC HENRY | MD | 28770 | | 1600Z-SU | MILWAUKEE CHAPTER | WI | 28805 | 2000CT | 0200Z-Mo |
| 4----- | | | | | OLD FORT | IN | 28815 | | 1900Z-SU |
| BLUE AND GRAY | KY | 28760 | 1330ET | 1830Z-SU | 0----- | | | | |
| CHAP. OF CAROLINAS | NC | 28730 | 1500ET | 2000Z-SU | CLIFF DWELLERS | CO | 29330 | 1800MT | 0100Z-Mo |
| CHEMAM COUNCIL | GA | 28755 | 1500ET | 2000Z-SU | COLD. CENTENNIAL | CO | 28805 | 1600MT | 2300Z-SU |
| CHOCTAW-HATCHEE BAY | FL | 28692 | 1400ET | 1900Z-SU | LEWIS AND CLARK | NO | 28640 | | 1600Z-SU |
| OLD NORTH STATE | NC | 28740 | 1600ET | 2100Z-SU | MOTHER OF THE WEST | MO | 28810 | | 1900Z-SU |
| OLD NORTH STATE | NC | 28140 | 1700ET | 2200Z-SU | PIKES PEAK | CO | 28845 | 1000MT | 1700Z-SU |
| PALMETTO | SC | 28770 | 2100ET | 0200Z-Mo | SOUTH DAKOTA | SD | 28700 | 1200CT | 1800Z-SU |
| POSSUM TROTTERS | NC | 28845 | 1330ET | 1830Z-SU | SKY BLUE WATERS | MN | 28715 | 1100CT | 1700Z-SU |
| TIDEWATER NET | VA | 28860 | 1600ET | 2100Z-SU | DX----- | | | | |
| 5----- | | | | | CHAPTER OF BORINAGE | ON | 28785 | | 1000Z-SU |
| BAUXITE | AK | 28765 | 2030CT | 0230Z-Mo | JOHNNY CANUCK | VE | 28930 | | 1500Z-SU |
| GOLDEN TRIANGLE | TX | 28700 | 1400CT | 1900Z-SU | DOGWOOD | VE | 28675 | | 0400Z-SU |
| LIGHTHOUSE | MS | 28700 | 1900ET | 2300Z-SU | LAKE GENEVA | MB9 | 28850 | (28185) | 1500Z-SU |
| PALO DURO | TX | 28705 | 1000CT | 1500Z-SU | MANCUNUIM | Q | 28870 | | 1300Z-SU |
| TRUTH OR CONSEQUENCES | NM | 28512 | | 1800Z-SU | MONT-VENTOXX | F | 28410 | | 0800Z-SU |
| 6----- | | | | | DAISE VALLEY | F | 28860 | | 0800Z-SU |
| BIG FOOT | CA | 28710 | 1st Su | 0600Z-SU | OTAGO 45 SOUTH | ZL | 28905 | | 2300Z-SU |
| CHANNEL ISLANDS | CA | 28750 | 1600PT | 0000Z-Mo | RHONE ALPS | F | 28770 | | 0730Z-SU |
| CITY OF PERRIS | CA | 28915 | 0900PT | 1700Z-SU | SCARBORO BLUFF | VE | 28730 | | 1800Z-SU |
| GOLDEN BEAR | CA | 28805 | 1300PT | 2100Z-SU | TULIP | PA | 28795 | | 0500Z-SU |
| Q.R.P. NET | CA | 28780 | 1400PT | 2200Z-SU | YUKON GOLD PANNERS | VY | 28785 | | 1900Z-SU |
| WILD BURRO | CA | 28698 | 1100PT | 1900Z-SU | | | | | |
| WILD BURRO | CA | 28698 | 1500PT | 2300Z-SU | | | | | |

MONDAY

| CHAPTER | QTH | FREQ. | L/TI | ZULU | CHAPTER | QTH | FREQ. | L/TI | ZULU |
|---------------------|-----|-------|--------|----------|--------------------|-----|-------|--------|----------|
| 1----- | | | | | 5----- | | | | |
| NOR'EASTERS | MA | 28704 | 1900ET | 0000Z-TU | SODNER | OK | 28820 | 2000CT | 0200Z-TU |
| 2----- | | | | | 6----- | | | | |
| LIARS | NY | 28110 | 2000ET | 0100Z-TU | BAY AREA | CA | 28775 | 2000PT | 0400Z-TU |
| STATEN ISLANDER | NY | 28745 | 2000ET | 0100Z-TU | GOLDEN BEAR | CA | 28610 | 1930PT | 0330Z-TU |
| TROTTERS AND PACERS | NJ | 28755 | 1900ET | 0000Z-TU | GREAT VALLEY | CA | 28830 | 1900PT | 0300Z-TU |
| 3----- | | | | | 7----- | | | | |
| BEAVER VALLEY | PA | 28850 | 1900ET | 0000Z-TU | CHIEF SEATTLE | WA | 28625 | 2000PT | 0400Z-TU |
| 4----- | | | | | SILVER STATE | NV | 28777 | 2000MT | 0300Z-TU |
| CHEMAM COUNCIL | GA | 28563 | 1900ET | 2400Z-TU | T-BIRD/ARIZ SUNSET | AZ | 28575 | 1900MT | 0200Z-TU |
| KENTUCKY CARDINAL | KY | 28760 | 2000ET | 100Z-TU | 5----- | | | | |
| SEVEN RIVERS | FL | 28900 | | 0000Z-TU | CHIEF ANDERSON | IN | 28785 | 1730ET | 2230Z-Mo |
| SIR WALTER RALEIGH | NC | 28687 | 2000ET | 0100Z-TU | CITY OF LIGHTS | IL | 28720 | 2030CT | 0130Z-TU |
| SUNCOAST | FL | 28100 | 1900ET | 0000Z-TU | OLD FORT | IN | 28695 | 1930ET | 0030Z-TU |
| WHITEHOUSE | DC | 28725 | | 0100Z-TU | 0----- | | | | |
| 5----- | | | | | MOTHER OF THE WEST | MO | 28150 | | 0300Z-TU |
| BAUXITE | AK | 28765 | 1930CT | 0130Z-TU | PIKES PEAK | CO | 28845 | 2000CT | 0200Z-TU |
| MAROI GRAS | LA | 28715 | 1830CT | 0030Z-TU | DX----- | | | | |
| | | | | | BERLIN BEARS | WG | 28810 | | 1800Z-Mo |

TUESDAY

| CHAPTER | QTH | FREQ. | L/TI | ZULU | CHAPTER | QTH | FREQ. | L/TI | ZULU |
|----------------------|-----|-------|--------|----------|---------------------|-----|-------|--------|----------|
| 1----- | | | | | 5----- | | | | |
| CASTLE CRAIG | CT | 28675 | | 0000Z-We | GREEN COUNTRY | OK | 28600 | 2000CT | 0200Z-We |
| MINUTEMAN | MA | 28609 | 1930ET | 0030Z-We | HEART OF TEXAS | TX | 28640 | | 0100Z-We |
| S.NE.NUTMEG | CT | 28690 | 1930ET | 0030Z-We | HOUSTON SHOT | TX | 28688 | 2000CT | 0200Z-We |
| 2----- | | | | | REPUBLIC OF TEXAS | TX | 28560 | 1830CT | 0030Z-We |
| LINDBERG/LIARS | NY | 28780 | 2000ET | 0100Z-We | 6----- | | | | |
| 3----- | | | | | FRESNO CHAPTER | CA | 28845 | 2000PT | 0400Z-We |
| ANTHRACITE BREAKER | PA | 28660 | 2130ET | 0230Z-We | ORANGE COUNTY | CA | 28755 | 1900PT | 0300Z-We |
| FORT MC HENRY | MD | 28770 | | 0000Z-We | Q.R.P. NET | CA | 28780 | 2000PT | 0400Z-We |
| MARYLAND-DC | MD | 28770 | 2000ET | 0100Z-We | 7----- | | | | |
| 4----- | | | | | CASCADE | OR | 28650 | 1930PT | 0330Z-We |
| ALL AMERICAN CITY | AL | 28625 | 1930ET | 0030Z-We | CINNABAR MOUNTAIN | ID | 28885 | 1900MT | 0200Z-We |
| CHAPTER OF CAROLINAS | NC | 28540 | 1800ET | 2300Z-TU | CRATER LAKE | OR | 28930 | 2000PT | 0400Z-We |
| CHATANOOGA CHOOCHOO | TN | 28830 | 1930ET | 0030Z-TU | GRAND CANYON | AZ | 28748 | 2200MT | 0500Z-We |
| CITY OF FIVE FLAGS | FL | 28670 | 2000ET | 0100Z-We | 8----- | | | | |
| DEVILS' TRIANGLE | FL | 28525 | 2000ET | 0100Z-We | C.A.T.T. | OH | 28800 | | 0100Z-We |
| GREAT SMOKY MOUNTAIN | TN | 28700 | 2100ET | 0200Z-We | GREAT LAKES CHAPTER | MI | 28860 | | 2359Z-TU |
| OLD DOMINION | VA | 28815 | 2030ET | 0130Z-We | NICH WATER WONDERLD | MI | 28650 | 1900ET | 0000Z-We |
| OLD NORTH STATE | NC | 28740 | 1930ET | 0030Z-We | 9----- | | | | |
| SUNCOAST | FL | 28795 | 2000ET | 0100Z-We | EGYPTIAN RADIO CLUB | IL | 28720 | 1900CT | 0000Z-We |
| 5----- | | | | | DX----- | | | | |
| BLUE BONNET | TX | 28625 | 1900CT | 0100Z-We | EDMONTON AREA | VE | 28520 | | 0400Z-We |
| GOLDEN TRIANGLE | TX | 28828 | 2000CT | 0200Z-We | LONDON CHAPTER | Q | 28805 | | 1930Z-TU |

DELETIONS, ERRORS, CHANGES, ETC. TO-- KB 5 PJ, 804 Colleyville Ter.,
Colleyville, Texas, 76034. Pse give FULL info! 73's from Bob Wille.

| WEDNESDAY | | | | | | | | | | | |
|--------------------------------|-------|--------|----------|----------|---------------------------------|--------|-------------|---------|----------|--|--|
| CHAPTER | QTH | FREQ. | L/TI | ZULU | CHAPTER | QTH | FREQ. | L/TI | ZULU | | |
| 1----- MURPHY'S LAW | RI | 28820 | | 0000Z-Th | 6----- KINGS VALLEY | CA | 28702 | 2000PT | 0400Z-Th | | |
| 2----- FLOUR CITY | NY | 28725 | 1930ET | 0030Z-Th | 7----- LILAC CITY | WA | 28790 | 2000PT | 0400Z-Th | | |
| MOHAWK VALLEY | NY | 28675 | 2000ET | 0100Z-Th | 8----- MICHIGAN ROBINS | MI | 28800 | 1930ET | 0030Z-Th | | |
| STATEN ISLANDER | NY | 28150 | 2000ET | 0100Z-Th | TRI-CITY | MI | 28960 | 2000ET | 0100Z-Th | | |
| HUDSON VLY HAMSTERS | NY | 28595 | | 2330Z-Th | 9----- BLACKHAWK VALLEY | IL | 28925 | 2100CT | 0300Z-Th | | |
| 3----- COMMODORE PERRY | PA | 28835 | | 0030Z-Th | WILWAUKEE CHAPTER | WI | 28805 | 2100CT | 0300Z-Th | | |
| DELAWARE VALLEY | DEL | 28660 | 1930ET | 0030Z-Th | SEN. DIRKSEN | IL | 28550 | 1930CT | 0130Z-Th | | |
| FORT MCHENRY | MD | 28770 | | 0000Z-Th | 0----- GATEWAY | MO | 28650 | 2000CT | 0200Z-Th | | |
| 4----- CITY OF OAKLAND PK | | 28743 | | 0001Z-Th | LAND OF LINCOLN | NE | 28805 | 2000CT | 0200Z-Th | | |
| CRADLE OF CONFEDERACY | 28722 | 2000CT | 0200Z-Th | | MO-KAN | MO/KAN | 28842 | 2000CT | 0200Z-Th | | |
| CYPRESS | FL | 28655 | 2000ET | 0100Z-Th | NORTH STAR | MN | 28657 | 2000CT | 0200Z-Th | | |
| DRUID CITY | | 28865 | | 0100Z-We | T.R.O.T | MN | 28780 | 2000CT | 0200Z-Th | | |
| 5----- CDWTOWN | TX | 28710 | 2000CT | 0200Z-Th | DX----- KING SALMON | VE | 28650 | 2000PT | 0400Z-Th | | |
| TBOTWO | TX | 29373 | | 0830Z-We | MANCUNUM/E. LAND. | G | 28860 | | 1400Z-We | | |
| 6----- HOOT OWLS | CA | 28810 | 2000PT | 0400Z-Th | RHONE ALPS | F | 28150 | | | | |
| THURSDAY | | | | | | | | | | | |
| CHAPTER | QTH | FREQ. | L/TI | ZULU | CHAPTER | QTH | FREQ. | L/TI | ZULU | | |
| 2----- LIARS/LINDBERG | NY | 28730 | 2000ET | 0100Z-Fr | 5----- LONE STAR | TX | 28580 | 2000CT | 0200Z-Fr | | |
| 3----- DELAWARE VALLEY | DEL | 28660 | 1930ET | 0030Z-Fr | RIO GRANDE | TX | 28690 | 2000CT | 0200Z-Fr | | |
| 4----- CHEHAW COUNCIL | GA | 28535 | 2200ET | 0300Z-Fr | TEN BAR X | TX | 28640 | 2000WT | 0300Z-Fr | | |
| FURNITURE CAPITAL | NC | 28673 | 1930ET | 0030Z-Fr | TBOTWO | TX | 28111 | | 0830Z-Th | | |
| GREAT SMOKY MOUNTAIN | TN | 28700 | 2100ET | 0200Z-Fr | 6----- 10-10 BUSINESS NET | CA | 28800 | 1930PT | 0330Z-Fr | | |
| MUSIC CITY | TN | 28910 | 2000CT | 0200Z-Fr | 7----- GOLDEN SPIKE | NY | 28825 | 1930MT | 0230Z-Fr | | |
| O.J. | FL | 28525 | 2000ET | 0100Z-Fr | NORTHERN NEVADA | NV | 28711 | 2000PT | 0400Z-Fr | | |
| OLD NORTH STATE | NC | 28740 | 1930ET | 0030Z-Fr | 0----- LAND OF LINCOLN | NE | 28650 | 19000CT | 0100Z-Fr | | |
| 5----- DALLAS COWBOYS | TX | 28580 | 2000CT | 0200Z-Fr | DX----- MANCUNUM/E. LAND. | G | 28870 | | 1400Z-Th | | |
| HOUSTON SHOT | TX | 28188 | 2000CT | 0200Z-Fr | | | | | | | |
| FRIDAY | | | | | | | | | | | |
| CHAPTER | QTH | FREQ. | L/TI | ZULU | CHAPTER | QTH | FREQ. | L/TI | ZULU | | |
| 1----- OCEAN STATE | RI | 28765 | 1930ET | 0030Z-Sa | 5----- TRUTH OR CONSEQUENCES | | 28512-28580 | | 2330Z-Fr | | |
| 2----- BROOKLYN BRIDGE | NY | 28850 | | 0030Z-Sa | 6----- WILD BURRO | CA | 28698 | 2000PT | 0400Z-Sa | | |
| 3----- FORT MCHENRY | MD | 28770 | | 0100Z-Sa | DX----- CITY OF MELBOURNE | VK | 28580-28512 | | 2330Z-Fr | | |
| 4----- CHEHAW COUNCIL | GA | 28110 | 1900ET | 0800Z-Sa | DOWN UNDER | ZL | 28530 | | 2230Z-Fr | | |
| TEXTILE EMPIRE | AL | 28795 | 2000ET | 0100Z-Sa | NORTH SEAS | DN | 28835 | | 1600Z-Fr | | |
| SATURDAY | | | | | | | | | | | |
| CHAPTER | QTH | FREQ. | L/TI | ZULU | CHAPTER | QTH | FREQ. | L/TI | ZULU | | |
| 1----- MURPHY'S LAW | RI | 28850 | | 1700Z-Sa | 9----- WILWAUKEE GUARDIAN | WI | 28805 | | 1500Z-Sa | | |
| 2----- TROTTERS AND PACERS | NJ | 28755 | 0930ET | 1430Z-Sa | 0----- MO-KAN | MO/KAN | 28842 | 1000CT | 1600Z-Sa | | |
| 4----- DRUID CITY | | 28865 | | 1400Z-Sa | COLD. BIG HORN | CO | 28895 | 1100MT | 1800Z-Sa | | |
| SPACE SHUTTLE | FL | 28660 | | 1500Z-Sa | WAR EAGLE | | 28900 | 1500CT | 2100Z-Sa | | |
| TREASURE COAST | FL | 28880 | | 1800Z-Sa | DX----- ALASKAN IDITAROD | KL | 28849 | | 2000Z-Sa | | |
| 5----- BILLY THE KID | NM | 28565 | | 2100Z-Sa | BIRDWING | VK | 28525 | | 2300Z-Sa | | |
| CUTLAW | TX | 28664 | | 2000Z-Sa | BRAZIL CHAPTER | PY | 28750 | | 1800Z-Sa | | |
| REPUBLIC OF TEXAS | TX | 28560 | 1000CT | 1600Z-Sa | BRISBANE SUN VALLEY | VK | 28586 | | 2300Z-Sa | | |
| 6----- CITY OF ANGELS | CA | 28655 | 0900PT | 1700Z-Sa | CANTERBURY | ZL | 28715 | | 2200Z-Sa | | |
| KEYSTONE | CA | 28765 | | 1800Z-Sa | DOGWOOD | VE | 28815 | | 0300Z-Su | | |
| RIVER CITY ARC | CA | 28870 | | 2000Z-Sa | FESTIVAL CITY | VK | 28540 | | 2330Z-Sa | | |
| SMOG | CA | 28785 | | 2100Z-Sa | FLAGSTAFF | VK | 28545 | | 0100Z-Su | | |
| 7----- CHIEF SEATTLE | WA | 28625 | 2000PT | 0400Z-Su | GOLD COAST | VK | 28585 | | 2300Z-Sa | | |
| CITY OF ROSES | OR | 28825 | | 1700Z-Sa | HERNANDARIAS | LU | 28720 | | 1700Z-Sa | | |
| COLUMBIA RIVER | WA | 28775 | | 1800Z-Sa | LAKE GENEVA | HB9 | 28850 | | 1500Z-Sa | | |
| CRATER LAKE | OR | 28930 | 1030PT | 1830Z-Sa | LAKE GENEVA | HB9 | 28185 | | 1500Z-Sa | | |
| LILAC CITY | WA | 28790 | 1000PT | 1800Z-Sa | LONDON | G | 28935 | | 1400Z-Sa | | |
| NORTHERN NEVADA | NV | 28711 | 1230PT | 2030Z-Sa | MANCUNUM | G | 28870 | | 1300Z-Sa | | |
| 8----- CHRISTOPHER COLUMBUS | OH | 28640 | 1400ET | 1900Z-Sa | MONT-VENTOXX | F | 28150 | | 1300Z-Sa | | |
| 9----- PARROT | IN | 28815 | | 1500Z-Sa | MONT-VENTOXX | F | 28725 | | 1400Z-Sa | | |
| | | | | | POWER VALLEY | VK | 28570 | | 0000Z-Su | | |
| | | | | | TARCHANG | JA | 28580 | | 1200Z-Sa | | |
| | | | | | TAST | JA | 28680 | | 1300Z-Sa | | |
| | | | | | WELCOME STRANGER | VK | 28530 | | 0000ZSu | | |
| DAILY | | | | | | | | | | | |
| CHAPTER | QTH | FREQ. | L/TI | ZULU | CHAPTER | QTH | FREQ. | L/TI | ZULU | | |
| 3----- CRAZY EIGHTS | PA | 28888 | 2000ET | 0100Z | 0----- SKY BLUE WATERS | MN | 28715 | 2100CT | 0300Z | | |
| 4----- BUZZARD ROOST | SC | 28750 | | 0130Z | DX----- LA GROUPE 10M | F | 28700 | | 1700Z | | |
| OLD NORTH STATE (DX) | VA | 28400 | Mo-Fr | 1430Z | OTAGO 45 SOUTH | ZL | 28050 | | 0100Z | | |
| OLD NORTH STATE (DX) | VA | 28350 | Sat-Su | 1430Z | RHONE ALPS | F | 28850 | | 1800Z | | |
| 7----- CHIEF SEATTLE | WA | 28625 | 2000PT | 0400Z | | | | | | | |
| 10-X INTERNATIONAL | | | | | | | | | | | |
| MON ONLY | CA | 28775 | | 1800Z | MON TO SAT | CA | 28800 | | 1800Z | | |

COMING EVENTS

1984

FEBRUARY

19

A meeting and luncheon of the 10-10 International Net will be held on Sunday 19 February 1984 at Woody and Eddy's Restaurant, Huntington Drive and San Gabriel Blvd. in San Marino, CA. Social hour begins at 11:00 AM and buffet is at 12:00 Noon. Please contact Jack Smothers, WA6YJJ, for reservations at \$8.50 per person. Jack's phone number, in Glendora is now (818) 335-6846. The Norwalk Keystone Chapter is host for the luncheon.

MARCH

15

Editor's deadline date for the Spring issue of the 10-10 NEWS.

17-18

1984 Bermuda Amateur Radio Contest.

24

2nd District QSO Party 24 March Through 1 April. Sponsored by LIARS Chapter. For information and sample log sheet send SASE to: Rich/WB2MAN, 30 A Arleigh Road, Great Neck, NY 11021.

JUNE

1-3

Annual Oregon State Ham Convention at Seaside, OR. For further information send SASE to Doc, KA7BSD, City of Roses Chapter. Dr. La Roy E. Miller, 1801 N.W. Walmer Dr., Portland, OR 97229

2-3

10-10 Spring QSO Party-CW. See page 11 in this issue for details.

AUGUST

4-5

10-10 Summer Phone QSO Party. See next issue for details.

~~~~~ ANNOUNCING ~~~~~

Corrections to the results of the Summer QSO Party received from Chuck, KJ5L: TOP TEN QRP should read as follows:

| | | | |
|--------|-----|----------|-----|
| *KD4BU | 511 | *N9DHX | 148 |
| KQØT | 270 | KC5SY | 130 |
| KI6D | 225 | WB3KJM/5 | 72 |
| KI7Z | 193 | W6ELR/9 | 38 |
| WD5JGC | 183 | PA3AJT | 21 |

* CHANGES

Also, 1 log, from WB1ARU, was not entered in the computer. It adds 121 pts. to the Minute Man Chapter total for a grand total of 2865 moving that Chapter to 7th place in the standings. Apologies from Chuck, KJ5L.

SPECIAL NOTE: See page 31 for new address of VK Manager Les Olsen, VK2PEW.

Chapter Activities

Many 10-10 chapters issue certificates which may be earned by following rules established by those chapters. See "10-10 Net Guide" for days and times when chapter nets meet. Groups wishing to create local chapters may get informatin from Chapter Coordinator Connie Hauck, K6EXQ, 794 W. 23 St., Upland, CA 91786. Changes in Net schedules should be reported to Bob Wille, KB5PJ, 804 Colleyville Ter., Colleyville, TX 76034.

10-10 INFORMATION

How to become a Ten-Ten Member

Work 10 present members on 10 meters. Log each 10-10 number, call sign, date worked, op's name, location. Send list to your Call Sign Area Manager, with \$1 Registration Fee, \$4 for first years dues (foreign \$5, U.S.). Novices, foreign applicants need work only 5 present members; novices pay no Registration Fee. You will receive a Certificate, and be assigned a permanent 10-10 Number. You must pay annual dues to remain in good standing, receive the News, and participate fully in all activities.

How to earn Bars and Plaques

Log the 10-10 numbers of stations you work on 10 meters, all bona-fide number exchanges on the air. Then list 100, no more, no less, no duplicates, thus:

1. List in serial order of 10-10 numbers. Show call, handle and location.
2. Submit only one list of 100 at a time.
3. Log books or copies of log book pages are not acceptable.
4. Give your name, address, call sign, 10-10 number, and state which Bar you are requesting (i.e., 100 Bar, 200 Bar etc.)
5. Enclose a large size SASE (20¢ First Class).
6. Mail as follows: 100-900 Bars, Willie E. Madison, WB7VZI, 10512 W. Butler Dr., Peoria, AZ 85345. 1000 Bar and up, Bill Risher, WB6OMH, P.O. Box 277, Twin Peaks, CA 92391.

With your 500 Bar comes an honorary V.P. Number, and other activities. A 500 Certificate costs \$1. Plaques are awarded for 1000, 2500 and 5000 contacts, and cost \$3 each plus 37¢ postage. Make checks payable to 10-10 Int'l Net, Inc. Please do not send cash.

How to earn WAS

After working and getting QSL card confirmation on one 10-10 member in each of 50 states, prepare an alphabetical list by states with full data on each contact. Mail cards and list to Susan Brackeen, K1CAD, P.O. Box 7081, Johnston, RI 02919. U. S., Canadian, Mexican members send \$2.42, U.S. funds, for certificate cost and return postage. Overseas members may save about half the postage cost by sending non-returnable copies of QSL cards (Fax, Xerox, etc.). More than one card per sheet is OK, but all required information must appear, including 10-10 number. Show both sides of card only if necessary for complete information. Also include alphabetic list of states with full information on each contact, your own complete information, including 10-10 number, and \$2.60 U.S. funds for cost of certificate and return postage. Address application to K1CAD, as shown above. Please do not send cash.

Countries Award

The Countries Award is given for confirmation (QSL's) of QSO's exchanging 10-10 numbers with members in 25 or more countries. Cost is \$5.00, U.S. funds. For complete rules and application form, send business size (#10) SASE to Alan Sherman, K1AS, RR#2, Box 662, Danielson, CT 06239, U.S.A.



Make any checks payable to 10-10 International Net, Inc. DO NOT SEND CASH. Canadian, Australian and New Zealand applicants are reminded that dollar amounts quoted are U. S. dollars. Your bank can tell you how much to send in your own currency to make up the required amount in U. S. funds.

Award applicants must show proof of paid-up 10-10 membership by enclosing Xerox or similar copy of current membership card or address label from a recent issue of the 10-10 News.



MANAGERS

Ten-Ten International Net, Inc.
Monitoring 28,800 KHz—Daily Except Sunday

U.S.A. CALL SIGN AREAS:

| | | | | |
|-----------------------|--------|---------------------|---------------------|-------|
| 1. Earle White | W1NC | 117 Brattle St. | Arlington, MA | 02174 |
| 2. Larry Berger | WA2SUH | 9 Nancy Blvd. | Merrick, NY | 11566 |
| 3. Jim Duppins | WA3RBQ | 2317 Windsor Ave. | Baltimore, MD | 21216 |
| 4. Clint Paine | K4EKX | 309 3rd Ave | New Port Richey, FL | 33552 |
| 5. Grace Dunlap | K5MRU | Box 445 | La Feria, TX* | 78559 |
| 6. Dick Rauscher | W6ANK | 4371 Cambria St. | Fremont, CA | 94538 |
| 7. Willie Madison | WB7VZI | 10512 W. Butler Dr. | Peoria, AZ | 85345 |
| 8. John Hugentober | N8FU | 4441 Andreas Ave. | Cincinnati, OH | 45211 |
| 9. Berniece Tielemann | N9CDO | Rt. #1 | Lenzburg, IL | 62255 |
| Ø. Kevin Schleicher | WDØBXU | 469 Main Street | Lino Lakes, MN | 55014 |

*Mid-May to mid-October, K5MRU's address is Box 13, Rand, CO 80473.
The 4th Call Area has been further divided as follows: VA, NC, SC: Malcolm Spangler, K4KUT, Box 481, Shelby, NC 28150; KY, TN: Doug Henry, WA4SFN, Rt. 2, Box 37, White Pine, TN 37890; AL, GA: Jim Beswick, W4YHF, Rt. 5, Box 77B, Ellijay, GA 30540; FL: K4EKX (see address above).

DX AREAS

ZL: T.J. "Mac" McKENZIE, ZL3RK, 73 Cygnet St., Christchurch 9, New Zealand.
VK: LES OLSEN, VK2PEW, 3 Noumea St., Shalvey 2770, NSW, Australia.
VE, VO: REG PEARSON, VE3RG, 23 Judith Dr., Toronto M4J 2S3, Ontario, Canada.
OTHERS: CARL SCHOEN, W4NJS, 2616 Glenhaven Ln., Winston-Salem, NC 27106 USA.

Order Form

| QTY | ITEM | PRICE | AMOUNT |
|-----|--|--------|--------|
| ___ | Annual Dues, U.S.A. Members New ___ Renewal | \$4.00 | ___ |
| ___ | Annual Dues, Foreign Members New ___ Renewal | \$5.00 | ___ |
| ___ | Registration Fee* (not required of novices) | \$1.00 | ___ |
| ___ | 10-10 Stamps (100) | \$1.00 | ___ |
| ___ | Membership Roster (Postage paid) | \$3.50 | ___ |
| ___ | Membership Roster by AIR (Not avail. U.S., CANADA, MEXICO) | \$5.50 | ___ |
| | Total | | ___ |

*Registration fee is required of all new members. Make any checks payable to 10-10 International Net, Inc. DO NOT SEND CASH. Canadian, Australian, New Zealand applicants are reminded that dollar amounts quoted are U. S. dollars. Your bank can tell you how much to send in your own currency to make up the required amount in U. S. funds. Other DX member orders, through W4NJS, payable by International Postal Money Order only.

Complete the following by typing/printing and mail to your Call Area Mgr.

10-10 No. _____ Call _____ Name _____
Address _____ City _____ State _____ Zip _____

Please enclose an SASE or stamps !

FROM THE DESK OF...

Jim Michaels
W6PGM 10-10#10



On the cover is Hans Tromholt, WB6YYI #181 who is one of the very senior of the 10-10 old timers. Hans has seen it all grow from a Sunday picnic in a park back in the early sixties, to probably the largest single radio net in the world. He has done it all for the organization faithfully and diligently serving in many offices. He has been a catalyst which has kept it all going. Hans, we salute you!

Thanks to all of the chapters and individuals who sent in so much good material. I appreciate it, and a special thanks to Dick Corlew, NC6V for the cover photo.

Jack Smothers, WA6YJJ would like to hear from those who may be interested in a quarterly roster update supplement. He is willing to pursue the endeavor if he gets a response from enough members to make it worthwhile. Jack's address is 2360 Valcourt Lane, Glendora, CA 91740.

Our President, Carl Winter, W6OAW received a Christmas card from V. F. Gromov, UAØFDA on Sakhalin Island wishing all of the 10-10 members a Merry Christmas. Carl asked that I pass along these greetings.

73, *Jim*, W6PGM.

Complete and tear off here. Attach to front of your contest log.

Cover Sheet

1984 Spring QSO Party

Chapter Assignment: _____

Total contacts with 10X #: _____ X 2 = _____ Points
Total contacts without 10X #: _____ X 1 = _____ Points

Total contacts

Total Points

Lee Pasewalk, WB6MGM (Rec. Mgr.)
18815 Yukon Ave.
Torrance, CA 90504

BULK RATE
U. S. POSTAGE
PAID
PERMIT NO. 1
GARDENA, CALIF.

