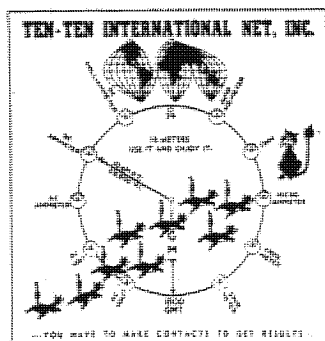


Official Publication Of The Ten-Ten International Net, Inc.  
Monitoring 28,300 KHz—Daily Except Sunday

# 10-10 INTERNATIONAL NET OFFICIALS

President	Carl Winter	W6OAW
Vice-President	Jim Cass	AA6K
Secretary	George Joy	WB6SYJ
Treasurer	Gerry Gross	WA6POZ
Directors:	Howard Bowman	W6QIR
	George Elliott	W6ENC
	Bob Hartley	W6WPY
	Morrie Goldman	W6EHM
Regional Managers:	Earle White	W1NC
	Larry Berger	WA2SUH
	Jim Duppins	WA3RBQ
	Dave Buschow	WD4MPG
	Grace Dunlap	K5MRU
	Dick Rauscher	W6ANK
	Willie Madison	WB7VZI
	John Hugentober	N8FU
	Berniece Tielemann	N9CDO
	Kevin Schleicher	WD0BXU
	Carl Schoen	W4NJS
	Les Olsen	VK2PEW
	Mac McKenzie	ZL3RK
	Reg Pearson	VE3RG



## AWARDS:

Bars [100-900]	Willie Madison	WB7VZI
Bars and plaques [1000 and up]	Bill Risher	WB6OMH
Countries	Alan Sherman	K1AS
Worked All States	Susan Brackeen	KA1CAD
Chapter Coordinator	Connie Hauck	K6EXO
Chmn., Rules Comm.	Harry Syring	WB1FTQ
Editor, Net Guide	Bob Wille	KB5PJ
Editor, 10-10 News	Jim Michaels	W6PGM
Int'l Net Manager	Sherm Sherman	K6PTF
Legal Counsel	Karl Kopetzky	K9AQJ
Printer	Bert Ayers	W6CL
Records Manager	Lee Pasewalk	WB6MOM
Roster Manager	Jo Moise	K6AYU
Supply Manager	Wes Emerson	WB6GWS

The 10-10 International News is published four times annually by the 10-10 International Net, Inc. Each paid-up member receives a copy. This is an independent publication. Permission to reprint is granted, providing suitable credit is shown.

Quarterly chapter activity reports should be sent to the Chapter Coordinator, Connie Hauck, K6EXQ, 794 W. 23d St., Upland, CA 91786 Telephone (714) 985-4836.

News items and photos may be sent to Jim Michaels, 3102 Lomina Ave., Long Beach, CA 90808. Telephone (213) 425-5577.

The next issue of the 10-10 International News is the Fall issue, scheduled to be published in October 1984.

FALL ISSUE DEADLINE DATE

SEPTEMBER 15, 1984

## 10-10 INTERNATIONAL NET CONTROL STATIONS

Monday	Dick	W6ANK	28.800 MHz
Monday(Alt)	George	WB6URK	28.775 "
Tuesday	A1	W6RNK	28.800 "
Wednesday	Bob	W6MDK	28.800 "
Thursday	Sherm	K6PTF	28.800 "
Friday	Connie	K6EXQ	28.800 "
Saturday	Don	K4EES	28.800 "

- Nets start at 1800Z -

## 10-10 NET CHECK-IN SUMMARY

Weekly summary of total stations checking into the 10-10 Net for the week beginning:

Feb 27	333	Apr 2	125	May 7	61
Mar 5	356	Apr 9	196	May 14	97
Mar 12	280	Apr 16	153	May 21	119
Mar 19	233	Apr 23	154	May 28	85
Mar 26	204	Apr 30	91		

## RELIEF NET CONTROL STATIONS

Paul, W6AOP; Bill, W6AYI; Louise, N6ELK; Mark, KA4HNV; Dee, KA6HQJ; John, WA6IYA; John, W6LII; Norm, W6LLV and Jack, WA6YJJ.

## *From the desk of W6PGM*

This publication welcomes the submission of short articles, news reports, announcements, and so on. Bear in mind that publication dates are approximately a week after the first day of January, April, July and October. Copy deadline dates are generally the 15th of the month preceding publication. ☆ ☆

Any manuscripts should be typed, and camera-ready, and should be mailed flat, if at all possible. Copy may be single-spaced. Use 8 1/2" x 11" white paper, and leave 1/2" margins on both sides. ☆ ☆

Photographs in black-and-white are preferred, since they reproduce more clearly than color. Include complete identification of subject matter, with call signs, complete names, 10-10 numbers, chapter identification, and any other desirable information.

## ATTENTION

If your address has a U.S. Zip Code, send your renewal or order to the Manager serving the area with the same number as in your own call sign. Details on page 31.

# NEWS *from the* Directors

HOWARD BOWMAN  
W6QIR #4509

IN THE LAST ISSUE OF THIS JOURNAL, I wrote that we were in the throes of producing a new Membership Roster for 1984, and that it was expected to be out about the first of May. Well, we did, and it was, and if you ordered one (and if you didn't, you should) you should have it by now. As usual, there were some last minute corrections, but they got made. When I say 'corrections' I refer, of course, to changes that we know about. If you had a call sign change and didn't report it, don't blame 10-10 if the Roster shows your old call sign.

Members in the tenth call area, those who carry a 'Ø' in their call signs, are still the victims of some minor discrimination. For as long as I can recall, members have complained that the numeral '0' in the Roster doesn't carry a slash bar to distinguish it from the letter 'O'. It still doesn't, but that doesn't mean that you can't tell them apart. For example, if you look at No. 03315, whose call sign is WØOM, you'll find that it looks, at first glance, like WOOM. Now, look closer. Notice that the 'Ø' character is skinnier than the 'O' character immediately following it. They are the Laurel and Hardy of O's, so to speak, and you can tell them apart.

SOMETHING THAT CONNIE HAUCK WROTE ABOUT last issue reminded me that there is a service which we may be able to perform. Connie wrote that she had received letters from members who had forgotten their 10-10 numbers. Connie referred them to their district managers, which is fine except that a manager may not have the information either. One of the by-products of running the Roster on the computer is what we call a 'reverse' Roster. It is arranged alphabetically rather than by member number, and we get one every couple of years. Information from it is available if you wish to write me.

There are some rules you must follow, however. One is that you must send an SASE. Another is that you must send not only your current call sign, but any other call sign you have held over the years. If you aren't listed one way, you may be another. If you do wish to write about that, or about anything else, my address is 5872 W. 77 Place, Los Angeles, CA 90045. Of course, I realize that those of you who receive this journal haven't forgotten your 10-10 numbers. If you have, you need only look at the address label. That's the same label that carries your membership expiration date, so look at it whether you remember your number or not. Anyhow, the reason I have mentioned this reverse Roster to you who are current members is that it is apt to be to you that someone says, 'I used to have a 10-10 number, but I have forgotten what it was.' Now you know how he can find out.

WHEN I LEARNED THAT W6JEJ, Jay Holliday, who had been Director of the ARRL's Southwestern Division had become an ARRL Vice-President, and that he had been succeeded as a Director by Fried Heyn, WA6WZO, my interest was aroused. I knew that Fried was an active 10-10 member (No. 8011), and that his XYL, Sandy, WA6WZN was also. Sandy's number is 12332.

That bit of information led me to take a look at other possible relationships between ARRL and 10-10, and here's what I found: William Stevens, W6ZM, is No. 10715, and Ray Wangler, W5EDZ, is No. 17196. They are, respectively, Directors of ARRL's Pacific and West Gulf Divisions. Also 10-10 members are the following Vice Directors: Howard Mark, WØOZC, No. 37965, Dakota Division, John C. Kanode, N4NM, Roanoke Division, and Marshall Quiat, AGØX, Rocky Mountain Division.

IN THE LAST ISSUE OF THIS JOURNAL, under "Coming Events," there was an announcement of the spring luncheon meeting of 10-10, which was scheduled for May 6. The restaurant in which the luncheon was to be held was a new one for 10-10. In fact, it was a new one, period. As events transpired, it was so new that it didn't manage to get opened by May 6, and the week immediately preceding that date was mightily complicated by efforts to

spread the word by every possible means. The new date was set for June 3. On the Tuesday just before June 3, it was learned that there were other complications which would prevent having the meeting on that date, so everyone went through the same procedures all over again, but with one difference -- because it was now getting well into the summer, the meeting was simply canceled. Maybe we'll have better luck with the summer meeting.

I HOPE THAT BY NOW SOMEONE HAS NOTICED that this page doesn't look the same as the preceding one. Reason: I treated myself to a new typewriter. I find that it is very much like getting used to a new transceiver -- there are a lot of controls and functions that I didn't have on my old manual machine, and I'll have to get used to them. If you see mistakes, and you probably will, don't write me about them, write me about something else instead.

HAVING MENTIONED WRITING LETTERS reminds me that Frank Bolen, WA2KWC, sent along a letter with two samples of dupe sheets he had made. One is the numbered grid of 10 x 10 squares, just the ticket for a 10-10 contest. The other is also a 10 x 10 grid, but the rows are numbered 1 through 0, from top to bottom, and the columns are headed by call sign prefixes, AA-AL, KA-KZ, K, N, W, WA, WB, WD, VE, and Misc. I don't know if Frank is willing to send out samples, but he might, if you asked him nicely and sent along a large size SASE. Incidentally, one of Frank's samples was put to good use. A couple of weeks after Frank's letter, I received one from a new member asking the familiar question, "What is a dupe sheet?" My reply enclosed one of Frank's sheets and explained that we had answered his question umpteen times on these pages, but we can never quite catch up with the new members coming along.

AWAY BACK IN THE WINTER ISSUE OF 1980 I raised some questions about the strength of the connection between 10-10 and its many chapters. One question related to the extent to which members of local chapters were 'active' members of 10-10. Over the years, 10-10 has had to face problems generated by the 'lifetime' assignment of 10-10 numbers, which has given many of those who have joined the false notion that if one has a number he is relieved of all future responsibility for the welfare of the organization. Not so. Every number added creates a perpetual added expense to 10-10. Four times each year, as that number with its accompanying information is run through the computer, it costs money. That expense is borne by those members who continue to pay their dues.

With that in mind, I have also wondered how various chapters would stack up with respect to continued, paid-up membership in the parent organization. Recently I had the chance to find out how one chapter did, but don't get your hopes up too high, since I'm not going to identify the chapter.

By quite underhanded means, I obtained a list of about two dozen "regular" members of a certain chapter net. Here's what I found: One of the members was clearly long overdue with respect to 10-10 dues payment. He (or she) was three years in arrears. There were four others whose membership expiration dates had just passed. I am inclined to disregard these. My timing was such that these individuals might well have renewed without my knowing it. But the big plus was this: Three-fourths of those listed were completely current, with many having expiration dates in 1985 and 1986.

That chapter is doing a fine job of supporting 10-10. My question to all chapters is this: HOW ARE YOU DOING? If you know, and are proud of it, let me know too, and I'll mention it.



TREASURER GERRY GROSS, WA6POZ, HAS A COUPLE OF PROBLEMS that are bugging him and wants members to help him. The first is about checks that are returned by the bank marked "account closed" or "NSF." In either case there is no money in the account to honor the check. Banks make a hefty charge when this happens, and if the check was yours, the monkey is on your back. There aren't many of these, but there are a few.

The other problem mostly concerns checks from overseas. For some time, the requirement has been that members remitting funds to W4NJS do so by means of International Postal Money Order. If all did it would be fine, but some continue to send checks, and these are not usually micr-encoded (those cryptic symbols and numbers along the bottom of most checks, toward the left side). All the bank then has to do is add the amount of the check, over to the right. If the encoding is not there, all of its information has to be added by hand, and for that banks charge a fee. In our case the fee is often greater than the face value of the check, and this is, obviously, unacceptable to 10-10. PLEASE, please when you tell overseas hams about 10-10 and how to join, tell them also to use an International Postal Money Order and save everyone a lot of trouble.

EVERY ONCE IN A WHILE I GET A LETTER from a member suggesting a way in which things should be done differently than they are. Many are good suggestions, but turn out to be a bit impractical because of one little matter that is usually overlooked: someone would have to do it. As far as possible, within cost limits, 10-10's procedures are mechanized, and the membership records are on computer tape. Suggested changes often require substantial human intervention so as to tell the computer what to change, and how to change it. It's that human intervention that's in short supply.

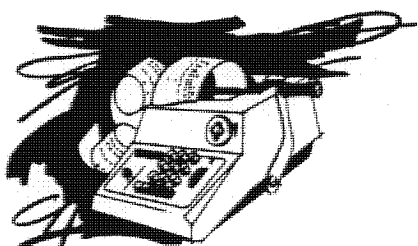
BY THE TIME YOU READ THIS, Canadian Manager Reg Pearson, VE3RG, will have moved from Toronto to a new home in Barrie, which Reg tells me is about 50 miles distant. He says it is quieter there. His complete new address may be found on p. 31, as usual. Back last winter, when the band was in better shape than it is now, I could have sworn that most of the noise coming out of Toronto was Reg's signal. It was exceptionally good out here in L. A.

EDITOR JIM MICHAELS TELLS ME of receiving a rather long letter from the USSR with information about call sign changes. According to a brief article in QST (June, 1984, p. 61), the changes took effect on May 1, and are rather sweeping. At the moment I have no idea how the USSR operators who are 10-10 members will fare with respect to these changes. There aren't many of them, and as soon as we get information (if we do), we'll let you know.

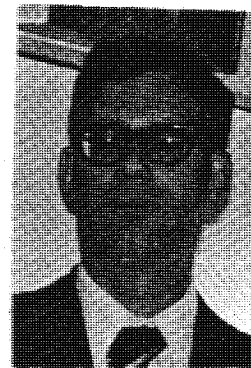
AT THIS WRITING IT DOES LOOK AS THOUGH we have a new Supply Manager to take over that portion of the load that President Carl Winter has been carrying. In response to a letter sent to members in the Los Angeles area there were several volunteers, of whom the first was Wes Emerson, WB6GWS, No. 36627. Carl and Wes have not yet finalized matters, but if that has been done by press time, Wes will be listed on p. 2 as Supply Manager.

THAT'S ABOUT ALL FOR THIS TIME. If you have news, information, comments, questions for these pages, please write me. My address is about at the middle of the first page of these comments. 73,

*Howard*



Gerry - WA6POZ #21274



Hi to all:

As in past years, after I close the books and mail the IRS and the California Franchise Tax Board their statements on the operating income and expenses of 10-10, I like to let all the other volunteers know first hand how we were doing. This year is no different, only I'm a month early this year for several reasons. This task gets easier and easier and I will be on an extended vacation this year and I had to get it done sooner. Also as you can tell this letter was done with a Word Processor and using the computer has helped make the year-end task go faster and easier.

As for 10-10, we are a healthy organization, income from the various sources continues to exceed our expenses. Our excess is a little inflated this year, Bert Ayers, W6CL, our printer installed some data processing equipment, had some problems and didn't feel like billing us until his problems were solved. In April I did receive an invoice for UPS charges and 2 issues of the NEWS, Bert promised to catch up as soon as possible, however, we're the ones who are earning the interest as a result of his late billing. Also this evening I had a phone conversation with our new supply manager, Wes Emerson, WB6GWS. I haven't met him in person, but he sounds like we have been fortunate to acquire his services. He should make all the district managers happy, knowing that this critical area of 10-10 operation, getting supplies to run the various functions will again be running at 100 per cent. Our President, Carl, W6DAW has tried doing both jobs, but he discovered early it was impossible, finding the right person for the job has taken a long time. Welcome Wes. Also new this year, is the fact that we have rented some storage space to hold and store supplies for 10-10. This might not sound significant but I have in my garage the financial record of 10-10 for the last 20 years, someone else has other records, someone else was keeping the supplies, etc. I for one am glad that my garage may soon be ALL mine.

So much for 10-10, again I would like to remind the managers who mail me reports that I will be gone all of July and until August 9th. So DO NOT mail me anything after June 15th, I will have no time to process any paper. Along with this letter you may have received an expense check with a little extra to cover the extended period of my absence. I hope that everyone had a good summer and I look forward to visiting with as many of you as I can. I will be on 10 as many days as time permits, look for me, and at the ARRL convention in New York.

73's

*Gerry*, WA6POZ



FROM THE TREASURER  
GERRY GROSS - WA6POZ - 21274  
SUMMARY OF FOURTH QUARTER 1983-1984

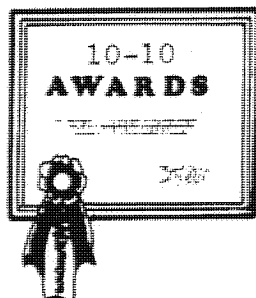
	INCOME - EXPENSE				
	QUARTER	YEAR-TO-DATE			
	83-84	82-83	83-84	82-83	81-82
REVENUE (ALL SOURCES)	9,830	11,954	36,376	41,135	40,147
EXPENSES					
BULLETIN, ROSTER, ETC	3,674	5,202	16,460	23,261	26,725
REGIONAL MANAGERS	648	784	2,493	3,036	2,998
OFFICERS & DIRECTORS	57	87	115	315	509
OTHERS MANAGERS & SERVICES	426	811	1,147	2,652	4,722
TOTAL EXPENSE	4,805	6,884	20,215	29,264	34,954
EXCESS (LOSS)	5,025	5,070	16,161	11,871	5,193

10-10 INTERNATIONAL NET, INC.  
STATEMENT OF REVENUE AND EXPENSE  
FISCAL YEAR ENDING MARCH 31, 1984

		1983-84	1982-83
NET WORTH at the beginning of year (4-1-83)		\$ 39,010	\$ 25,819
REVENUE			
Received from members			
Dues	31,994		
Stamps	434		
Rosters	3,102		
Awards	799		
Miscellaneous	47	36,376	40,621
Interest on investments		2,897	1,777
		=====	=====
		39,273	42,398
EXPENSE			
Bulletins, rosters, stamps, etc:			
Postage	7,019		
Printing and Supplies	3,665		
Mailing Services and Data Processing	5,776	16,460	22,994
Reimbursements for postage, supplies, etc:			
Regional Managers	2,493		
Officers and Directors	115		
Other Net Managers	250	2,858	4,394
Awards and Contests		897	1,747
California Franchise tax & Non-Profit Tax		8	8
Depreciation (office equipment)		54	64
		20,277	29,207
		=====	=====
		18,996	13,191
		=====	=====
EXCESS of receipts over expenses		58,006	39,010
NET WORTH at end of year (3-31-84)			

NOTES ABOUT STATEMENT

- Revenue received from members includes \$2,656 for multi-year membership.
- Investments include Savings Accounts, Money-Market Savings Certificates and Interest from an Interest bearing Checking Account.
- Mailing Services include label preparation, addressing, and mail drop services. Data Processing includes file maintenance (adds and changes), Directory, and Cheshire label preparation.
- Postage and printing charges (approx \$9,000) due and payable this year, were deferred until the 1984-85 fiscal year.



# 10-10 AWARDS

INTERNATIONAL-500-OF-THE-WORLD



## TOP TEN

WA5JDU 13700  
K5MRU 13100  
WØRWC 11800  
WA9LIC 10300  
PJ2WG 7800  
KS6A 7500  
K4KAH 7500  
W1KZH 7500  
WA6FFS 7300  
W1FPH 6800

### 500 BAR

1502 WB1EXS 1511 KCØTQ  
1503 N1BME 1512 WA4IUL  
1504 K6CFV 1513 WB9WDD  
1505 KQØT 1514 W6LTW  
1506 W8UPH 1515 WØ4I  
1507 KB7WD 1516 N7FAK  
1508 KD9BS 1517 ZL1TB  
1509 NR4R 1518 VO1BJ  
1510 KA1HUS 1519 K5YJM

### 500 BAR

1520 W7INY 1529 VK5AQZ  
1521 VK3YU 1530 WA2SXF  
1522 W5HMU 1531 KB4EQR  
1523 KC8AV 1532 WA2ZLK  
1524 ZL2AZU 1533 WA8ONO  
1525 WB5TON 1534 HK1GAD  
1526 W2WQV 1535 N1CTD  
1527 KR3D 1536 W7FGJ  
1528 N6ELK 1537 N9CQO

Correction:  
1495 WD8MQJ

Members attaining the 500 Bar are automatically members of the INTERNATIONAL-500-OF-THE-WORLD, Frank Orcutt, W4JO (SK), Founder, Grace Dunlap, K5MRU, President.

### 1000 BAR and PLAQUE

724 KAØKCE 730 KMØB 736 FO8JP  
725 KC5OT 731 KAØKTB 737 N9DCQ  
726 KDØNP 732 K4JGD 738 KA4TUM  
727 K4DVL 733 KQØT 739 W8GDH  
728 WG4X 734 KP4AXC 740 WB6ZOM  
729 WA1SMH 735 W4EJR

### 7500 BAR and PLAQUE

5 KS6A 7 K4KAH  
6 PJ2WG 8 W1KZH

### 5000 BAR and PLAQUE

21 K1WQU

### 2500 BAR and PLAQUE

133 K4YEH 136 K4EZZ  
134 VK4ON 137 WB3IFE  
135 KA4HMV

### 10-10 WORKED ALL STATES

755 KL7LA 761 WD5IRF  
756 KA1DDX 762 WD4FGN  
757 F6FCH 763 W4PNC  
758 WB3IHQ 764 HPIAVY  
759 KA5KOD 765 WA4IUL  
760 K3TUJ

### 10-10 COUNTRIES AWARD

#### BASIC -25-

167 WD5FMM  
168 NI5D  
169 KB2VI  
170 N2DNO  
171 WB8JDM  
172 WDØHCD  
173 HPIAVY  
174 W6YLJ  
175 F6CXB  
176 CX6BBY  
177 WD4FGN  
178 N4IQN  
179 VE7EOA

#### ENDORSEMENTS

##### -35-

80 WB2SJQ  
81 NI7E  
82 KA1HUS  
83 WA3GLQ  
84 W8IEC  
85 WØONQ  
86 VK4QN  
87 N6JM  
88 PA3ABW  
89 HPIAVY  
90 CX6BBY

##### -45-

61 WØONQ  
62 W1MME  
63 N1ASJ  
64 KA1HUS  
65 PA3ABW  
66 CX6BBY  
67 NI7E  
-55-  
40 W4SPR  
41 KT60

##### -65-

22 N8BBJ  
23 W5VNB  
24 WB1BVQ  
25 WA5NIC  
26 KA3BTH  
27 W1FAB  
28 W2KRK  
29 N8BYN  
-75-  
15 KE4JO  
16 W5VNB

##### -80-

11 W1EQ

##### -85-

11 W1EQ

##### -90-

9 WB5SKQ  
10 W1EQ

##### -95-

8 N1API  
9 WB5SKQ

#### HONOR ROLL

##### -100-

6 KC5CP  
7 WB5SKQ

##### -105-

4 WB5RQM  
5 WØRWC  
6 KC5CP

##### -115

1 N9CDO  
2 K4HAV  
3 W1FPH



Following are the changes in the VP certificate standings as reported by Grace Dunlap, K5MRU, President of the INTERNATIONAL-500-OF-THE-WORLD:

VP-100 #52 KØWZX; #53 KA1ERS; #54 W1FAB; #55 KA4NXT and #56 HPIAVY.

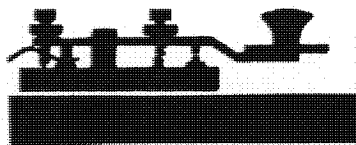
VP-200 #13 W1FPH. VP-300 #6 W1KZH. VP-400 #5 W1KZH. VP-800 #1 KA4DDY, #2PJ2WG.



# ANNOUNCING

10-10 INTERNATIONAL NET FALL CW QSO PARTY

By: Harry Syring, WB1FTQ  
Chairman, Rules & Ethics



Starts: 0000Z (UTC) November 3, 1984  
Ends: 2400Z (UTC) November 4, 1984

Ten-Ten QSO Parties are open to all amateurs but only paid-up members are eligible for awards or chapter assignment of scores. They are conducted to encourage Ten-Meter operation and interest in the Net. Non-members may use numbers collected to qualify for membership; members use them for awards.

## RULES

1. All contacts must take place between 28.0 and 28.2 MHz.
2. Exchanges: Callsign, name, city, state, and 10-10 number.
3. A station may be counted only once.
4. Single operator stations only are acceptable.
5. CW and RTTY modes are acceptable.
6. All Contacts must take place within the 48 hour contest period.
7. QRP class limit is 10 watts output.
8. Logs must be kept in UTC (Zulu Time).
9. A Dupe sheet is required of all participants submitting logs.
10. Chapter assignment of scores may be only by a paid-up member, belonging to that chapter as a local member, and able to work that chapter Net via groundwave from the location of the station working the contest.
11. Illegible or improperly submitted logs will be rejected. See below for log submission requirements.
12. Failure to comply with any of these rules or their intent may result in disqualification.

## SCORING

1. Two points for each contact with a 10-10 number exchange.
2. One point for each contact without a 10-10 number exchange.

## AWARDS

First place certificates and first place QRP class certificates to all U.S. Call areas; KL7 included with 7th area. Also Canada, South America, Central America, Caribbean (including Bermuda), Europe, Africa, Asia, and the Pacific, (including KH6, all Pacific Islands, New Zealand and Australia). Individual and chapter scores are published in the NEWS.

## LOG SUBMISSION

Logs are accepted from 10-10 members only and must be legible, in UTC, and complete. Each line entry must show Callsign, time, name, QTH, and 10-10 number (if any). A Cover Sheet is required showing your name, callsign, QTH, 10-10 number, membership expiration date, chapter assignment, total contacts and total points claimed. Please indicate if QRP and list power out. A Dupe Sheet must accompany all logs. Logs must be postmarked no later than December 1, 1984 and mailed to: Castle Craig Chapter, c/o Alan Kaiser, NIAPI, 194 Glen Hills Road, Meriden, CT 06450.

Next Contest: Winter Phone QSO Party - February 2,3, 1985.

## SILENT KEYS

1627 W6FGR Harry W. Barner, Los Angeles, CA	16793 W3DHU William N. Keister, Oakmont, PA
1728 W1DYT Raymond E. Foster, E. Dennis, MA	16822 KB3B David N. "Bud" Fisher, Laurel, MD
1912 W1AKZ Andrew Hurnanen, Templeton, MA	16855 W3OJA Joseph P. Daylida, Apollo, PA
2115 W2POA Joseph J. Mooney, Buffalo, NY	18051 VE2ERV Gilbert Varden, Port Charlotte, FL
2242 WAØZXE Robert Miles, Golden, CO	18494 WD9ARC Arthur H. Templeman, Milwaukee, WI
3566 W1EFC Charles R. McLam, Southbridge, MA	18683 KH6DZB Thomas P. Tennissen, Los Altos, CA
3761 KB8UZ Joseph M. Pilarsyk, Sparta, MI	19341 WB4AZQ Raymond F. Beckman, Lakeland, FL
4047 WB0AR Mitchell T. Kohn, South Euclid, OH	21528 W2FRA Thomas J. Hoar, Woodbridge, NJ
5349 W9DZE Grant Fitch, Milwaukee, WI	24012 W8QBF J. Donald Shirer, Canton, OH
5475 WBLOO Raymond C. Smith, Youngstown, OH	26033 W4HSV Clifford H. McCullough, North Port, FL
5782 KØPVE Harold A. Baity, St. Louis, MO	28416 KC3CE Jonathan T. Beavers, N. Little Rock, AR
6857 W7HUL Carl A. Suriano, Seattle, WA	28418 WB5WZB Caidus A. Cox, Carthage, MS
7009 KØWZK Lester R. Sidles, Estherville, IA	28555 KA8HCD Donald E. Carnes, Clinton, OH
7844 W2JZS Henry C. Wackenhuth, Nutley, NJ	29090 K7JWZ Dean W. Laughlin, Ririe, ID
7846 W3CPM Henry G. Weeden, Takoma Park, MD	29653 N1EMY Richard Baird, Lynn, MA
8794 W8CMV Albert A. Zimanski, Birmingham, MI	29928 KA6IRK Sheldon Meskin, Glendale, CA
9100 W5JLY Earle R. Lawler, Sr., Ajo, AZ	29952 WD6GGB Donald A. Howard, Paradise, CA
9513 WAØWPP Jon J. Vervair, Minnetonka, MN	30623 WA6OPX Ellis M. Calkins, Panorama City, CA
10200 W2GVV George L. Connelly, Pennsauken, NJ	31116 WD9DYF Burbank Murray, Wauwatosa, IL
12011 WBØSQQ Reinhold G. Miller, Denver, CO	34741 N6FIB Carl Fletcher, El Monte, CA
13545 K4CFR Robert J. Brady, Dunedin, FL	36065 W6OMU Joseph P. Forst, North Highlands, CA
15869 W6RYP L. Earl Dearth, Canoga Park, CA	37282 KA5JWI E. Hart Gilmore, Metairie, LA



We were all saddened to hear of the passing of Carl Suriano, W7HUL, #6857. Carl had been the inspiration and guiding light for the Chief Seattle Chapter for many, many years. He was a dedicated 10-10 member as evidenced by the activity of his chapter and its many members in the Pacific Northwest. We will certainly miss the 'chief' of Chief Seattle.

From Golden, Colorado, we are sorry to report the passing of Bob Miles, WAØZXE, #2242. His wife, Elma, was kind enough to send along his favorite picture showing him indulging in his favorite pastime.



## ANNOUNCING

The Norwalk Keystone City Chapter of 10-10 will host a picnic at 11:00 AM-3:00 PM on Sunday September 23, 1984 at Norwalk Park in Norwalk, Ca. The occasion will be the celebration of the 2nd anniversary. Everyone is invited. It will be a great chance to meet and talk with everyone. Bring your own food and drinks (beer and other libations are permitted) and join the fun. Chapter will furnish coffee and there will be donation prizes. Directions: Take Santa Ana freeway (I-5); Get off at Norwalk Blvd. Go West (Norwalk Blvd. change into San Antonio Dr.) to Sproul St. Turn left on Sproul; go 2 blocks to park. Look for the large wooden 'A' frame in the park.

### PRESS RELEASE

#### Billy the Kid Rides Again!!!

On the weekend of 28, 29, and 30 September 84 beginning at 0000 GMT (3a+), actually Fri nite local time, the Billy the Kid Chapter of Ten Ten Intl, will have a "Super Shootout". Here is how it will work. There will be 21 "Super Shooters" from all over the country, incl. VE, selected by our awards committee. The reason for the 21 is that Billy has 21 notches in his gun. These Secret Shooters will be issued a "LN" Number (Stands for lucky number) plus the last three digits of their zip code. For example, if I myself had an LN Number, it would be LN-005, since my zip is 88005. The way a 10-10 member can flush out a secret shooter and win an award, which incidentally, will be a Billy the Kid coffee mug, is to make a proper exchange with the "Secret Shooter". Only Ten-Ten members will be eligible to join the shootout, and only members will have LN numbers. No one will know who has a number. You will have to make contacts on the air, on ten meters, and if you ask the proper question and get the proper answer you will have flushed out the Secret Shooter and will get a cup. The proper exchange is: Ask the station you are working, "Are you one, Hoss?". If he/she says "What in the heck are you talking about", it is obviously not a good contact. If he/she says, "Yes, I are one", you are getting close. Then you must ask, "What are you?" and he/she will tell you, "I are LN---". Then you will have won, and will then submit the station Call, Date/time 10/10 and LN Number of the Secret Shooter to the Sheriff W5ZF together with one lousey buck to cover cost of shipping and you will receive a nice Billy the Kid Mug. The Secret Shooters can give their LN number only ONCE. When they are gone, it is over and we can all go home with our guns smoking and wait until the bad guys come out again. Good luck gang. Let's go get 'em.

73 Stan #27550.

*Stan, W5ZF*

As an active member of 1010 for the past five years, I have been trying to work 1010 DXCC. My interest increased, with the establishment of the 1010 Countries Award two years ago. Whenever time and band conditions permit, I work DX and handle the chores of net control for the Houston SHOT Net. New DX has remained my priority even with the decline in solar conditions. This article is a short history of my quest for 1010 DXCC at the beginning of the fall 1983 season when I had about 85 confirmed countries. My goal was to achieve 1010 DXCC by summer 1984.

I set down a strategy that, hopefully, would help me achieve my goal. I had gathered info on several active DX stations that I knew had numbers. These included KX6BU, KH0AC, DU9RG, D44BS, CQ2HQ, 6W1AR, and 7Q7LW. Several of these stations had just received their number and I needed to rework them while others had been worked on other bands. I also expected several DX Peditions to yield new countries for the first time. These included AD1S/KH5, HK0TU, W6KG/HK0 and ZL8. I knew there would be adequate news of these DX Peditions, and I expected Lloyd & Iris to be hopping thru South America giving out numbers. My plans were to take a lot of air time in listening for these stations; find others that would pop up unexpectedly, and set a few schedules whenever I could. The task of reaching my goal would not be an easy one because I could only operate after work and on weekends.

The hunt began in mid-October when I reworked Les, 7Q7LW, who recently received his number. Conditions into the Caribbean were excellent for the Malpelo DX Pedition and I worked them on all five bands and a new 1010 country. The conditions to South America continued excellent and Lloyd and Iris showed up in Columbia and the following week from San Andres Isl., HK0 which was a new 1010 country. Skip into the Pacific was excellent and the DX Pedition to Jarvis Island began a few days later. George, AD1S/KH5, was worked both on CW & SSB for a new 1010 country. Good conditions continued and next weekend I found Dale, W5BIM, operating as 3D2DM on Figi. I did not know Dale was on Figi on vacation and he was hoping to operate from another country soon but I never did hear him again. Beaming over to Africa the next day produced a contact with Chuck operating KC7UU/5N6 from Nigeria. A long period of weeks followed before any new DX was found but my efforts during October produced six new countries. However, I still needed about ten more for my goal.

The next new DX showed up on Thanksgiving Day when I worked Len at KH0AC. He also had just received his number and I was glad to rework him again for a new country. With the flight of the Space Shuttle STS-9 coming up, my time would shift to working Space DX, HI. I can remember hearing Owen, W5LFL, at least eight times but unfortunately I did not make it on his tape recorder. I ended up November with only one new country and band conditions are averaging 2 S units less than last year at this time.

The month of December began with a very rare contact into Faraday Antarctica when I heard Dave from VP8AQA. Dave had a new number but unfortunately the logs will not return until 1984 to his manager. The remainder of the month was not productive with several schedules not producing anything new. The year ended with only eight new countries in my log, and my hopes for DXCC are not very high because of the declining solar conditions and absence of DX on ten meters.

January passed very slowly and it was not until the fourth weekend when I worked Rene operating 6W1AR from Senegal. The remainder of the month did yield a QRP contact with the Laccadive DX Pedition on another band and I found 9U5JB, without a number unfortunately, but a new country on ten. The count for the month is one new country and my goal appears harder to achieve as the season passes.

I have good hopes for February because in previous years I have made many contacts in the Winter QSO Party. I was hoping for good band conditions but after making 422 contacts and placing 5th in the world, I could only count FG7BT on Guadeloupe as a new country. Conditions during the QSO Party were very disappointing and I finished the month with one new country and a rapid decline in solar conditions.

The month of March finds Lloyd and Iris on Easter Island but I have worked Father Dave from there many times. The first weekend I found Angelio, D44BS, the only active ham on Cape Verde. I sent Angelio a QSL direct with a green stamp for return postage. Later in March, I worked GU4LJC who is able to call Frank, GU2RS, and get him on frequency for a new country. I was lucky enough to find someone in the same town as Frank and I knew he had a number. My luck was now beginning to change and I am looking forward to the upcoming DX Pediton to Kermadec and Juan Fernandez.

The Kermadec DX Pediton is by three hams of which ZL1BQD operated as ZL8BQD. Ron worked me and we even swapped numbers when I was operating 5 watts QRP. Conditions had changed to outstanding and lots of new 1010 DX are about to happen next weekend. I never expected my luck would be so good when I began March 24th and found KX6BU on Kwajalein Isl. The operator Bill, KX6AO, was very nice and advised me that Biz never answered any QSLs when he operated the station in past months! I sent my card to Bill and had it back in three weeks. A few hours later I found C21FS operated by Frank on Nauru Isl. He had a new number and I am still waiting on his card. Later on the 25th, I found Iris operating W6QL/CE0 from Juan Fernandez and got a new 1010 country from there for the first time. Things are really going great as in less than 30 minutes I found CT3YD who is able to bring Lino, CT3BM, up on frequency from the Madeira Isl. It is hard to believe how great conditons are because in two hours I found Scotty at C53EK in The Gambia! After working Scotty, I heard a large pileup on Derek, J39BS, from Grenada. I tried unsuccessfully to work Derek but my four element yagi at 75 feet running the legal limit would not get his attention. My signal was skipping over him because another lower antenna in Houston did work him, I was surprised. Well, Derek was soon gone, but I had just worked five new countries in 24 hours and I was estatic! I never expected to achieve my goal by working five new countries in one day!

The following weekend I finally worked Robin, DU9RG, late one afternoon on a schedule. The next morning I was lucky to find Mel, EA7EBA in Seville, Spain. He got Tony, EA7AKN, on the frequency and we talked for ten minutes while I called other Houston stations that also needed Tony. The date was April 1st and in the past 30 days, I have worked ten new countries and missed two. I will never be able to accomplish this again, and it was my best DX experiences I have ever had in chasing 1010 DX, in all my years as a member. I achieved my goal on April 2nd when I received a QSL from D44BS to complete 1010 DXCC.

In the weeks that have followed, I worked Randy at V2AO on Antigua in late April, and in May I worked Arild with a new number for 3X4EX and received a quick QSL from his manager. I did finally worked Derek, J39BS, on Grenada and he was my last 1010 DX and raised my count to 118 countries worked with 108 confirmed as of early June. I hope some of you DX'ers were as lucky as I during March as I sure had fun chasing DX. 73's until next year.

Mike Davidson KC5CP 24949,

*Mike D.*



## News

My very good friend Grace Dunlap, K5MRU #218 asked me to assist her in advising the membership about her mailing address this year so...you can read about that right here. While I am writing about Grace let me tell you that she personally has helped me to prepare the silent key list in every issue I have prepared since becoming editor. My sincere thanks, Grace, for all the help you have given me and for all the wonderful things you have done for the 10-10 International Net.

As you can see, I am still in Texas and expect to be here most of the summer. I would appreciate it, if you have the space, if you would announce that all mail to me this summer should be sent to La Feria, Texas, rather than to Rand, Colorado. I have been trying to spread the word and put a note to this effect with all renewals, and when I am on the air, but most of my mail is coming via Colorado these days.

I am enclosing a letter from N5AFV which speaks well of the GREEN COUNTY CHAPTER of TEN-TEN.

Dear Grace,

Allen F. Mattis N5AFV  
7404 East 64 Street  
Tulsa, Oklahoma 74133

We recently had more than our share of bad weather here, with tornadoes striking twice in three days. Our local hams did a fantastic job providing communications, and some of our 10-10 members were very active. John (K5ENA, Green Country #63) operated from the Tulsa EOC for two days, providing necessary communications between the many agencies involved. John is the CD Communications officer for Tulsa County, and is also the ARRL EC for Tulsa County. Oscar (WB5ZQX, Green Country #48) gave the first reports of the tornado as it went through Prue, Oklahoma and nearby Walnut Creek State Park where Oscar is the Park Superintendent. Roy (WB5GZF, Green Country #5) handled some Health and Welfare traffic. I was involved during the second round of tornadoes; I operated the ham station at the Tulsa Red Cross Headquarters during the storm to provide Red Cross with initial damage and casualty reports. Other Green Country Chapter members no doubt provided other needed communications or were certainly monitoring the busy frequencies to assist if they were needed. The scope of damage and aftermath were so large that it would be impossible to assemble an accurate list of all who provided help to community, but Green Country Chapter members were certainly well represented.

The Green Country Chapter will probably operate ARRL Field Day again this year, and use Bud's call (W5NNL). Even if I don't get my own antennas up, I will have a chance to operate HF bands that week end.

73 & Best regards,

*Allen F. Mattis*  
Allen F. Mattis

Secretary, Green Country Chapter  
Green Country #49

---

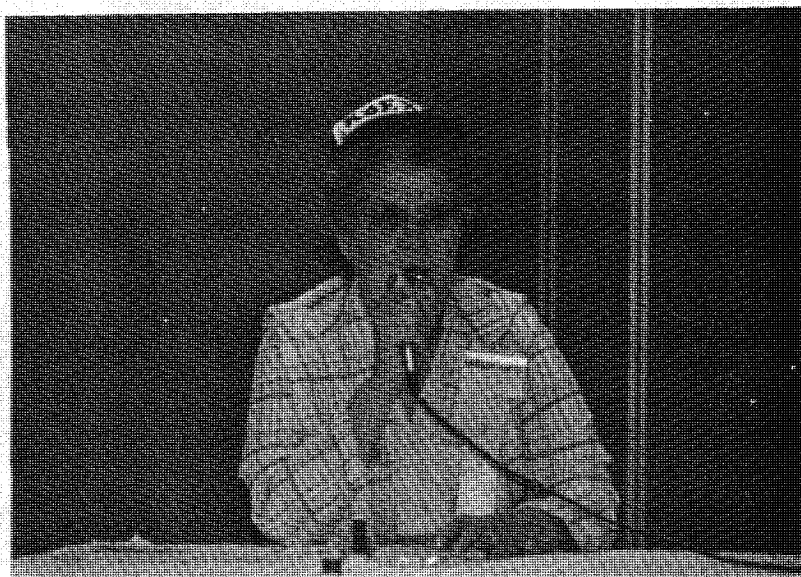
An interesting note from Alan Sherman, K1AS, Countries Award Chairman, states that a total of 175 different countries with 10-10 members, have been claimed to date. At press time, three (3) members were tied with a total of 115 countries confirmed.

Everyone had a great time at the Dayton Hamvention. The pictures that you see here were taken by Bill Labermeier, W8PJY. The photo at the right shows the crowd gathered for the 10-10 forum. There were over 100 in attendance.



Seated at the head table are (L-R) Connie, K6EXQ, 10-10 Chapter Coordinator; Bill, W8PJY Chapter Head of CATT and John, N8FU 8th call area for 10-10.

Connie, K6EXQ was the guest speaker at the 10-10 forum and according to all reports she had a wonderful time and everyone enjoyed having Connie present. For more interesting comments about the Hamvention see Connies Letter this issue.

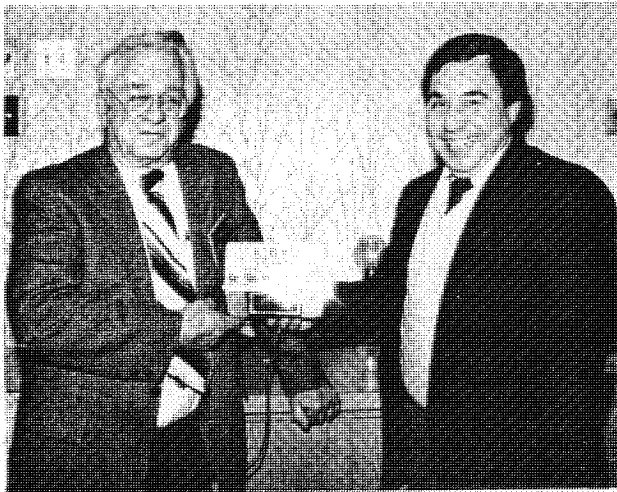


# SKY BLUE WATERS CHAPTER



A pictorial report on the Annual Banquet of the Sky Blue Waters Chapter held on March 28, 1984. The upper left hand photo shows the gathering of the entire group. What a turn out! Upper right hand photo is the new Chapter Head, John, KCØGP and his XYL Phyllis. The lower left hand photo is the "Ø" call area 10-10 VP Kevin, WDØBXU and his XYL Laurie. Lower right is Sherm, WØRHT who was the guest speaker. At left is Duane, NØBEI who was MC for the evening and at right is Len Bigelow, NØACD and his XYL Rosemary.





Frank Comfort, KO1M #32599 was apparently the official photographer at two very important events in New England earlier this year. In his letter, he made the comment that he was enclosing a double-header. The upper left hand photo shows (L-R) Ruddy, W1MME presenting a custom made clock, including his call sign, to Sonny, K1SVP. The right hand photo shows seated (L-R) Moe, K1HDO; Greg, KE1E; George, W1MUN and Milt, K1CKD. The occasion was a gathering of the Nor'Easters Chapter at the Manor IV Restaurant in Nashua, NH on April 14, 1984.

Second half of the double-header was the Minute Man Chapter luncheon held at the Bobby Hackett Restaurant in Pembroke, MA on June 2, 1984. Below, the left hand photo shows (L-R) Sonny, K1SVP; Newsy, W1FFT; Tony, W1ENO; Anne, W1LARU and John, W1ZLK. Right hand photo (L-R) Tony, W1ENO; Sid, W1YWW; Newsy, W1FFT; Cliff, W1RZO; Bill, K1LEZ and seated is Howie, W1IIP.





# OKIE RELAY'S CHAPTER



Elton & Laura Bryant KA7HSS #31489 KA7HST #36767  
 Brad Keeton, Frank Huston, Georgia & Jim Overby  
 KA8QME #35444, WD8DSR #25346, (Bottom) Gary Ferguson  
 Ken Hardwick, the winners of the Okie Relay's



Frank Baber WOPFJ #37925 CL #1 KA5LGA  
 Russ Slaton #37287 CL#3 Chapter Head  
 Alan Hedrick WA5EXY #699 Cert Mgr, Okie  
 Relay's



WD8DSR & KA8QME Jim & Georgia Overby, With  
 Shana Smalts Miss Texhoma, & KA7HST & KA7HSS  
 Laura & Elton Bryant



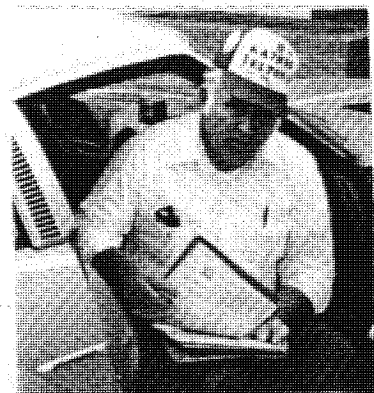
"Whats Her Name" And KA5LGA Russ  
 "making it legal "



Girls your not serious  
 about running???????



Well they Were  
 yov figure it out



Elton KA7HSS OLD MAN  
 "Really"! Al  
 Honest I thought soooooo





Members of the Mont Ventoux Chapter in France gathered in Mazan for this photograph. Seated (L-R) Jack, F6BVB and Marcel, F6BXQ. Standing (L-R) Fred, F6FCH and Jean, F6HBW.



UAØFDA is V.F. Gromov #26449 of Sakhalin Island, USSR. He is a trainer of a local body building group and would like to correspond with other members who are interested in body building. He would appreciate any books or magazines on the subject. Write to; P.O.Box 18, Sakhalin Island 693000 U.S.S.R.

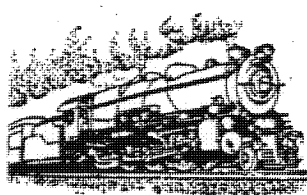
## DX



Seated above (L-R) Gavin, ZL3GI; XYL of ZL3BM and Dave, ZL3BM CH of the Canterbury Chapter.



DU9RG, Robin U. Go #36943 of Cotabato City, Philippines and his very elaborate station.



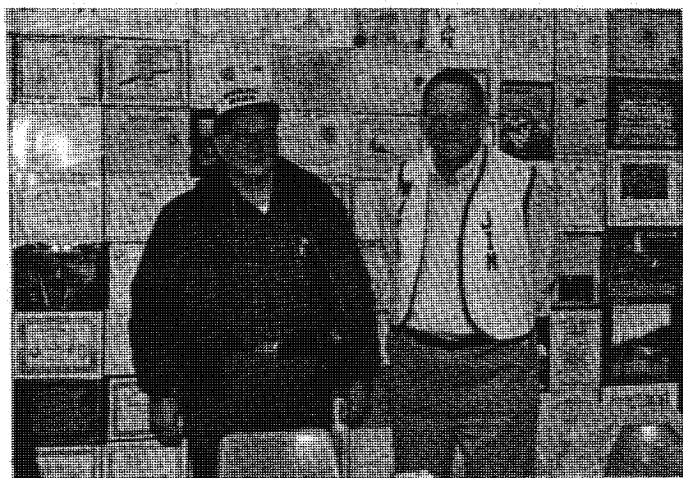
TEN-TEN INTERNATIONAL

# CHATTANOOGA CHOO-CHOO

## Chapter



Par - don me boy is that the Chat - ta - noo - ga Choo Choo,



Members of the Chattanooga Choo-Choo Chapter gathered at the Dalton, GA Hamfest on the 10th of March 1984. This chapter is on the move again and they have some interesting projects planned for the near future. In the upper left hand photo you see Dick, W4KAU #11124 with our good friend Jim Beswick, W4YHF #11718. Above on the right (L-R) Guy, W4DTI #11078; Ed, KF4CJ #37711; Paul, W4UIQ #31212 and Alice, NR4R #31223. Lower photo (L-R) W4KAU, Dick #11124; Paul, KE4JX #37374; Barry, KA4LKH #38801; Hal, WB4RUJ, #26765; Guy, W4DTI #11078; Alice, NR4R #31223; Paul, W4UIQ #31212 Ed, KF4CJ #37711 and seated is Charles, KD4XX #31227.





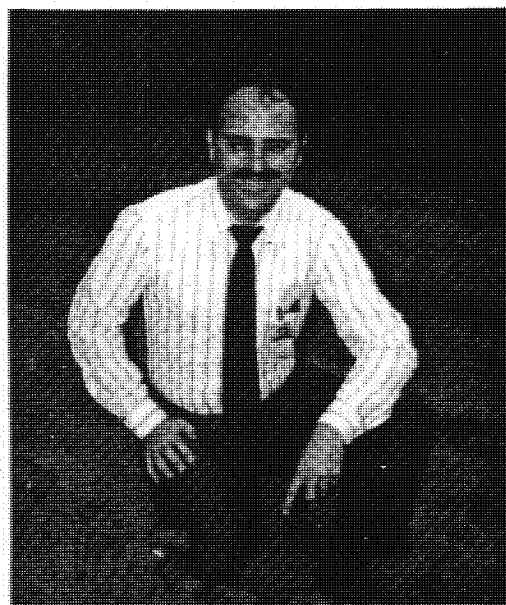
T.L."John" Johnson, KA5ACT #31008 [Article from Killeen (TX) Daily Herald]. Things may never be the same for the night crew at the Killeen Daily Herald. May 1 was the birthday of Theron "John" Johnson (KA5ACT) of our press room. John's family didn't know what to get him since he needed no clothes, nothing for his computer or amateur radio rig. But they came up with something that brought a smile to John's face and one to most everyone else in the building.

When John went on his supper break in the coffee shop, his family arrived with friends, MR. and MRS. JOE MASSEY. After all were seated and talking, in came a pretty belly dancer from Copperas Cove. She gave a performance that was a big hit with all of the fellows.

A scroll was presented which said, "Happy Birthday, John Look but don't touch. Love Mom and kids". John said his only regret was that it took 52 years to get such a gift. He loved it!



Shown above, is a portion of the antique radio collection of Ralph Ernstein, W6SPQ #36677 of Northridge, CA. Howard W6QIR was kind enough to forward this photo so we could all enjoy it.



Mike Davidson, KC5CP #24949 is the new Chapter Head of the Houston SHOT Chapter and has written an interesting story about 10-10 DX. See page 12.

# CONNIE'S LETTER-



CONNIE HAUCK, K6EXQ  
No. 19681  
CHAPTER COORDINATOR

In my mind I have written these pages so many times because there is so much that I want to say to you but I probably will not remember half of it. First let me tell you what a wonderful time I had in Dayton. I really felt like Queen for a week-end. Even before that, Bill, W8PJY from the C.A.T.T. chapter called several times to make sure that everything was going ok for me. A mix up in reservations left with a room about 60 miles from Dayton and my friends from Music City USA who had so kindly furnished transportation to Dayton from Nashville, gave up one of their rooms so that I might be closer to the activity. Even though I could have taken a bus, every time that I needed to go to the motel or a special meeting, someone was there with a car. Everyone just seem to anticipate my needs and they were taken care of at once.

It was a wonderful experience to have a seat at that long table where the "in crowd meets" and shake so many hands. Some I had meet at other times but most had only been voices to me before. Now beautiful visions of you dance before my eyes and I shall never forget one of you. As all of you say, I wish that we had had more time to talk on a one to one bases but that is not possible so each just gleaned whatever was possible from a constantly rotating head. It was fun and I hope that I shall be able to return. Hillis would have loved to have been there and I feel that he was looking down enjoying each moment with me.

Max/K89IU, chapter head of the Parrot chapter which started at Dayton a few years ago was one of the hardest workers there and deserves much credit. There were no special plans for activities for Paper Chasers so Max got busy, found a restaurant where we could meet Saturday evening and started taking reservations. The 48 reservations that Max turned in swelled to 70 when we were all in and seated.

A delightful meal and most of all good fellowship was enjoyed by all. There were mobile rigs available so that we could exchange whatever numbers needed and that included some new 10-10 numbers and maybe one or two qualified for a number. Max is already planning for next year and more information will be in a later Bulletin so watch for it.

The forum was great fun for me. Bill/W8PJY and John/W8FU, the eight district chairman did everything possible to make the forum a success and it was. Gary/KSHGL took many pictures and I am sure that some of them will find their way to Jim to be included in the Bulletin.

Something very dear to my heart and many of you who chase paper was discussed and is now ready to put into action and that is THE PAPER CHASERS MEMORIAL FUND. To be able to join the group one MUST have a 10-10 number. When a participant passes on his/her family is sent a certificate duly noting his passing and the fact that the passing leaves a void in our ranks which can never be filled. Along with this suitable final certificate is a list of their participating fellow members.

In order to participate, send \$2 and 2 SASE to KC8S/Bob Ross 813 Clinton St., Flint, MI. 48507. One SASE is for Bob to let you know that he received your money and the second to let him notify when funds are low and another donation is needed. I do hope that you will feel a part of this and if you do not chase paper, you may still feel that you want to be a part.

With summer coming on and so much other to do and especially in the states that have rough winters, remember that 10-10 needs you more than ever. Band conditions are down and activity is very low most of the time.



# CHAPTER CHATTER

## SUMMER



CASTLE CRAIG(K1WJL): We added an Honorary Local to better define ground wave. NIAPI keeps his TRS Model 4 busy with certificates & 10-10 bars. WA1WJL was the first local to qualify for the Flag of Ct. & WA2TTC the first local to obtain the Seal of Meriden. MASSACHUSETTS MINUTE MAN (W1FFT): We held our annual (8th) spring luncheon in June and it was well attended as usual. NUTMEG(KA1BFC): We still enjoy good checkins. Our spring luncheon was well attended. OCEAN STATE(WB1CCR): Our new certificate, QUAHOG, requires 100 points after 28 April 84. Ocean State numbers change as follows for Quahog certificate. HC =20, C/L=15, FS/DX=10 & O=5. Business size SASE + 2FCS to K1QFD.

LIARS(WB2MAN): We celebrate our 13th year of our chapter and late this year we will have our 800th net. The Liars have about 100 paid up local 10-10 members. During our recent 2nd district QSO party Trotters & Pacers received the Trophy for the winning chapter. In this area we have six chapters who can work on ground wave, so we have formed a Metro Net and meet each Sat. on 28,730 at 1400 local ET. This will give many the chance to work for certificates with many chapters on one frequency. Senior Liars now requires 50 contacts to incl. 5L. Anyone who has all Liarsville upgrades will be HC's & receive 20 new endorsements to work on. TROTTERS & PACERS (K2HLC): Seals for Win/Place/Show & sea/s for Triple Crown of Trotting & Triple Crown of Pacing now require SASE. Nice reduction in cost. Have beautiful trophy for one year because we, our chapter, won first place in the 2 land QSO party. Working on a new awards program. TWIN TIERS-CHANENGO CANAN(WB2YWH): Anyone holding all three certificates if IQ for the basic.

BEAVER VALLEY(KF3V): MANY applications still go to the former CM..PLEASE send them to Thomas F. Peluso 501=10th St. New Brighton, Pa. 15066. As of now Super Beaver Award counts as 35 contacts instead of the former 2 but it will still require the 100 contacts. Any Super Beaver holder should update the contact value. A new seal is now available for the Super Beaver. The Order of the Golden Beaver requires 200 Beaver Valley contact points. This is not in addition to the to the Super Beaver. Holders of the Super Beaver count 50 contacts. Fee is 25¢ +SASE-DX is \$1. FORT McHENRY (W3DCN): A CW-RTTY Net will be attempted- details from W3DCN for SASE. Planning a summer picnic and a special award honoring W3JZA. More later.

BLUE & GRAY(KF4FO): New ch is Jim. Our net time is 1930Z Sunday. BUZZARD ROOST WA4LUQ: New upgrades available and details in the certificate guide from W4YHF. CHATTANOOGA CHOO-CHOO(K4JGD): Send ticket stub from movie Chatt. Choo-Choo for a 5 pt upgrade. Basic available for \$1+2FCS or SASE. At the Dalton, Ga Hamfest we fired up the Mikado 4501 Engine and took on 16 new passengers & one was QA4BFS, a local who was headed to the mission fields in Peru. Throught OCTOBER only extension of Dalton Hamfest, send 10-10 # & SASE only for Basic Choo-Choo #. This is to increase our membership which we started in Dalton. You will also receive info & worksheets. There are automated upgrades for numbers 644 and under. All who respond to this announcement will at least be HC status. Watch for announcement of CHOO-CHOO BELLES award soon. CYPRESS(K4TSY): We are planning to celebrate our 10th anniversary. Sorry to lost Clint/K4EKX as our Fl. mgr. DRUID CITY(N4AII): We had a 4th of July contest. Hope to have infor in earlier next year so more of you will know about it. OLD NORTH STATE(W4NJS): Since we have lost our on active Delaware station, we have added 2 WC in Was. D.C. They are W4KM & NN3SI. TIDEWATER(WA4BGC): Urging members to call CQ and not listen all the time. Good advice for all. TREASURE COAST(K4KAH): Points changed for Gold Captain Ship. 1,000 pts to incl 2C/L or HC, 8FS & 4 YL'S. Members are 10 pts., Gold Doubloon 15, Capt. Ship 40 & IQ. C/HC/FS/DX & L 50 pts. BILLY THE KID(KA5AQT): Ray is back as ch. We recently had WD8DSR/Jim & Georgia?KA8QME visit us and look forward to their early return. DALLAS COWBOYS(KA5KAW): Waiting on new certificate. Recently had a dinner with the COWTOWN group. HOUSTON SHOT(KC5CP): Mike is the new ch. Points for higher awards has been reduced by 50% until 1/1/88. Now is your chance to get them. Anyone with a #201 or under and also has the Enterprise is an IQ. Bonus 2 points for each net checkin. Look for us in 10-10 QSO parties. OKIE RELAYS(KA5LGN): Because of band conditions, we have made some wild cards to be



I don't believe the activity will ever drop completely but it may be that most of it will be local. With paper chasers always looking for numbers someone will be there. The Paper Dolls had a special event for Father's Day and the special contacts were a little hard to find. I heard WB7NUU with a small group on and just the ones that I need. For 30 minutes I tried to get a relay but no one acknowledged me. I tried to get Bobbie's phone number from information but the COMPUTERS were down and no information was available but not to be outdone I went back and continued to call until someone either heard me or got tired of the noise. Anyhow I got my contacts. On Sunday I worked two stations at the Summit on Pikes Peak and the next day I worked the Cliff Dwellers ABOVE 29 and with good signals. It was especially nice to work the CD group because 4 of the 5 I visited with at Dayton.

It is with sadness that we note the passing of W7HUL/6857. Carl was chapter head of the Chief Seattle and a very hard worker for 10-10.

This time we say a sad farewell to three very nice chapters and it is all because of lack of interest. Any of you who live within ground wave of another chapter may want to consider what some of the other chapters have done in joining forces.. The second call area has a very unusual net mentioned in their chapter chatter and that may be something that you would like to try. The Alaskan Iditaron and Tulip chapters keep in contact on other bands. That helps 10-10 in that it keeps the group together and when band conditions allow they will be on 10. The Tulip chapter has prepared a very nice booklet explaining the chapter, 10-10 and certificates. I cannot read much of it but I know from the calls what they are doing. There are many other chapters having special events to create interest. In order for everyone to know about a special event, it should be published six months ahead of time. Some annual events were begun this year but not enough lead time was given for much to be said about them. Remember it takes our DX friends 3-4 months to get the Bulletin. They should know what is going on so that they may participate too. The post office has elected to return some of my mail to the sender even though it is correctly addressed, so if you have written me and not heard, please try again. I made a friendly visit to the postmaster with evidence in hand and hope that it will do some good.

I am afraid that I am very much behind in thanking those of you who have been kind enough to give me honorary charters in your chapter and if I thank you twice don't mind. The Pikes Peak, Cradle of Confederacy, Quahog, City of Oakland Park, Az. Sunset, Borniage, Buzzard Roost, Chatt. Choo-Choo, River City Arc's Grub Stake, Mas Swingers Soc., Dism Valley. Each and every one is very deeply appreciated. Did I neglect to say Okie Relay is a CH. I am trying to upgrade and be deserving of the honor but family problems do still exist and I am preparing for a short stay in the hospital for surgery myself. By the time that you have this I will be out and doing what comes naturally, looking for a net to check into or some numbers to collect. In conducting your nets, please give the skip stations every consideration because if put on hold they may not be there when you go back to them. In considering requirements for certificates, consider your charter activity, band conditions etc. As you will note seem have either deleted or greatly lowered charter or local requirements and it has paid off.

As I close let me thank each of you for your continued support to your chapter, 10-10 and to me. As I have said so often before, your love and support has no distance- it just flows around the world.

God Bless & 73,

*Connie*

Connie/K6exq

in the place of CL. New address for the CM is Al Hedrick P.O. Box 890 Hooker, Ok, 73945. A record was set at the Okie Relay's and if you get the time of the new record from WD8DSR, K8QME, KA7HSS, KA7HST, W0PFS, KA5LGA or WA5EXY & send the info to WA5EXY you get an extra 5 points. This will be good until the next 10-10 NEWS is out. OUTLAWS(N5CNH): Any Outlaw WAS can be used in place of W3JZA who was our Delaware member.

BAY AREA(W6ANK): New CM is N6FPP. We are working on a new certificate. By the way, N6FPP is cm for the Gold Nugget & Grand Award. GOLDEN BEAR(WB6POQ): Our checkins are good considering conditions. We have had some good evening band openings so listen. NORWALK KEYSTONE(KD6JC): Los Angeles Certificate, 2000 pts, in honor of the olympics. WA6JYY & WA6ZPX are moving to Oregon. We will all miss them. We have decided to make any Ca. station who has missed on a KC as well as those not able to work us on ground wave an HC. The change will be made when you send in for an upgrade. RIVER CITY ARC(WD6DFB): Grub Stake upgrade is Pyrite (Fools Gold) and requires 5 C/L, 10 HC, 15 FS/FC, 10 YL'S + 10 other. Max. 50 contacts with no station being used more than once. Min. contacts, work as many of the 50 as you can or want to. Bonus for anyone who works all 50. Starts 6/30/83 ends 9/30/84. 1 pt. for each 100 submitted to K86AN. SASE +1FCS. Claim Jumpers & host count as one contact. More in Oct.

CASCADE(WA7OVP): Cascade Barn requirements have been changed to the following. Barn numbers 1 thru 5 & FS count double for the 33 state/country requirements and is reto. COLUMBIA RIVER(WA7HDZ): Senior awards program now available. Senior certificate is \$2 and there are 6 seals, one for each 250 pts upto 4 and then one for 100 contacts and one for WAS. LILAC CITY(KB7LH): Our chapter is doing well and planning a picnic. Our slow speed cw net is at 28.195 7 pm local time Wed. to allow our youngest HC, 14 year old Ann/KA7RFR, to join us. CITY of ROSES(KA7FEH): New CM is KD7UZ/Gary Ward 17125 N.W. Meadowgrass Dr., Beaverton, Or. 97005. SILVER DOLLAR(KD7FC): Remember that we meet 9pm pacific time on 28.777. THUNDERBIRD-AZ. SUNSET(KA7COQ): Many new TB "WAS" since we created wild cards. 323 Az. Sunset certificates out & 31 VIP'S. C.A.T.T.(W8PJY): Our first annual qso party was in May and though conditions were not the greatest it was fun so mark your calendars for 1985. 10-10 forum at Dayton was well attended with many chapters and officers represented. Connie/K6EXQ was the principal speaker. The papre chasers are planning things for next year.

CITY of LIGHTS(W9ZPG): During Spring QSO Party we had 9 RTTY members on. No skip stns were worked but W1AW RTTY bulletins were booming in at 11 pm local time. Remember the FOX RIVER RADIO LEAGUE Ill. State A.R.R.L. Conv. Aug. 26, 1984. It will be at the Kane County Fairgrounds Exhibition Hall. Advanced tickets \$2 from Jerry Frieders 1501 Molitor Rd., Aurora, Il. 60505. OLD FORT(W9BYR): Those of you who have 200 or points can look forward to create more interest in the near future.

CLIFF DWELLERS(K0WZX): Remember the Sun. AM net from 1600 to 1700 & Sun. PM at 2400. Marian/KD0NI is AM NCS & Jerry/KC0NX is there in the PM. COLORADO CENTENNIAL(N0CKW): Our net time is 2300Z throughout the year. PIKES PEAK(KC0TQ): New ch is Harley. There is renewed interest & activity within the chapter and we hope to run several nets from Pikes Peak. SKY BLUE WATERS(N0ACD): Be sure to look for the Blue Ox each weeknd. W0TRD/Tom is now in Fortaleza, Brazil operating as PT7ZBC & is an IQ for the basic Sky Blue Waters. 29 10,000 Lakes awards were issued as of May 15.

LATE OR MISSED. POSSUM TROT(KU4W): Please correct net times, should be Sun. 1230L on 28.845 SSB net & Sun. 1700L on 28.150 CW net. REPUBLIC of TEXAS(KJ5L): Our net has about 36 checkins with 17 of those being charters. We get great support from the VK & ZL stations. We have 1868 members, 290 DX & 63 DX countries.

## Chapter Activities

Many 10-10 chapters issue certificates which may be earned by following rules established by those chapters. See "10-10 Net Guide" for days and times when chapter nets meet. Groups wishing to create local chapters may get informatin from Chapter Coordinator Connie Hauck, K6EXQ, 794 W. 23 St., Upland, CA 91786. Changes in Net schedules should be reported to Bob Wille, KB5PJ, 804 Colleyville Ter., Colleyville, TX 76034.

BRISBANE SUN VALLEY(VK48GM): We are always on frequency at net time so give us a call. Many thanks to Peter/VKVLX for taking care of certificate request while I was gone. DOWN UNDER(ZL1HW): Gordon has taken over as chapter head now that Mark/ZL1TB is a silent key. Mark was much loved on 10 meters and among his fellow hams in New Zealand. Mark is the second of our founders to die. Cy/ZL1LZ was the first. GOLD COAST(VK4VAS): Jack & Alma are home again after visiting the northern part of Australia. Thanks to Peter/VK4VLX for taking care of our certificates too. LAKE GENEVA(HB9OP): We are down but far from out. Conditions are not good but we are there and on Sun, NN3SI calls CQ 10-10. PENDLE WITCH(G4JS): Geoff/G3WYI wishes to thank the many people for their good wishes while Joe/G4JS has been ill. Joe is recovering and hopes to be on the air soon. CM is G3YII/Steve Cooper 24 Cambridge Street Darwin Lincs. RHONE-ALPES(F6CSK): Our late net time and high frequency makes it hard at times to have a net. Seems as if lower in frequency it better. CW net is still on at 1530Z Wed. on 28.150 but few attend. At 0830 local we have good assistance from our local net on 28.770 with some Japanese & USSR stations. F6EAK will be Maritime Mobile at the end of June. The address of F6CXB was incomplete in the Bulletin. Should be Paul Bassiri 112 Ter Rue Frederic Fays F69100 Villeurbanne. SCARBOROUGH BLUFFS(VE3RG): Reg wants all to know that he is very much alive. He is moving to Barrie, Ontario. Not much outside checkins for the net but still on each Sunday. TULIP(PA3ABW): It is very important to keep in contact with our Dutch Tulip members during bad band conditions. We have an 80 meter daily net to keep in touch. We are going to contact stations in Belgium, France & W. Germany to see if we can meet each year in Bad-Bentheim (W. Germany) for a Dutch-German meeting. We have put together a nice book about the Tulip chapter and 10-10 International.

Extinct by request: Chapter of the Carolinas, Textile Empire and Welcome Stranger.

Also reporting: Anthracite Breaker(WB3AVF); Cradle of Liberty(K3FFG); Delaware Valley(K3LBM); Whitehouse(WB3BMA); Old Dominion(WB4UOI); Choctawhatchee Bay(WF4X); Cradle of Confederacy(W4PLI); Devil's Triangle(WA4ZPX); Great Smoky Mtn(WB4NDX); Orange Juice(W4DWN); Palmetto(NV4I); Sun Coast(KA4DDY); Wiregrass Peanut Pickers(W4FYB); Bauxite(K5NE); Blue Bonnet(WA5JDU); Cowtown(WB5THD); Dallas County Lone Star(KB5VB); Mardi Gras(WB5SKQ); Miss. Gulf Coast Lighthouse(NSAQJ); Ten Bar X(K5DIT); Bigfoot(WB6SRQ); Fresno(WD6AIY); Great Valley(WD6ACC); Orange County(WA6HEL); City of Roses(KA7FEH); Crater Lake(K7TDX); Northern Nevada(W7ABX); Wyoming 10-10(KB7NL); Golden Spike(W7ZKL); Michigan's Water Wonderland(WB8WVF); Noars Country(KB8SH); Dirksen(K9EHP); Land O Lincoln(W9BPU); Milwaukee Guardian(W9MZZ); Gateway(W0ERZ); Lewis & Clark(KB0RM); Mo-Kan Tennessees(WA0HQ); North Star(K0SE); War Eagle(WB0RNM); Alaskan Iditarod(KL7JGN); Berlin Bears(DL7ZR); Borinage(ON6XN); Brazil(PY2DBU); City of Melbourne(VK3CBS); Edmonton Area Ten Tennessees(VE6ATT); Hernandaris(LU6DWZ); Johnny Canuck(VE2BQN); Mad Swingers Society(SM4DLS); Mont-Ventoux(F6HBW); North Sea(ON5AB); Oise Valley(F3CY); Surrey Dogwood(VE7CLC); Tarchang(JA3XRC) and ZL3 Canterbury(ZL3BM).

The Textile Empire has a few certificates left that are available for 2FCS. Don't forget that Jim/W4YHF has a brand new certificate directory out with many changes.



## 10-10 NET GUIDE

## SUNDAY

CHAPTER	QTH	FREQ.	L/PI	ZULU
1-----				
CITY OF MUMS	CT	28745	1900ET	2300Z-SA
LOBSTER TRAP	ME	28835		1700Z-SU
MINUTEMAN	MA	28150	1930ET	2330Z-SU
S. WE. NUTMEG	CT	28690	2000ET	0000Z-SU
2-----				
BROOKLYN BRIDGE	NY	28850	1400ET	1800Z-SU
ELECTRIC CITY	NY	28790	1500ET	1900Z-SU
MOHAWK VALLEY	NY	28765	2nd Sun	1400Z-SU
STATEN ISLANDER	NY	28745	1100ET	1500Z-SU
TWIN TIER	NY	28805	1300ET	1700Z-SU
3-----				
ANTHRACITE BREAKER	PA	28650	2100ET	0100Z-MO
CRADLE OF LIBERTY	PA	28695		0100Z-MO
PORT MC HENRY	MD	28770		1600Z-MO
4-----				
BLUE AND GRAY	KY	28760	1330ET	1730Z-SU
CHAPTER OF CAROLINAS	NC	28730	1500ET	1900Z-SU
CHERRAW COUNCIL	GA	28755	1500ET	1900Z-SU
CHOCTAW-HATCHEE BAY	FL	28692	1400ET	1800Z-SU
MASON-DIXON	VA	28820		1400Z-SU
OLD NORTH STATE	NC	28740	1600ET	2000Z-SU
OLD NORTH STATE	NC	28140	1700ET	2100Z-SU
PALMETTO	SC	28770	2100ET	0100Z-MO
POSSUM TROTTERS	NC	28845	1330ET	1730Z-SU
TIDEWATER NET	VA	28860	1600ET	2000Z-SU
5-----				
BAUKITE	ARK	28765	2030CT	0130Z-MO
GOLDEN TRIANGLE	TX	28700	1400CT	1900Z-SU
LIGHTHOUSE	MS	28700	1900ET	2300Z-SU
PALO DURO	TX	28705	1000CT	1500Z-SU
TRUTH OR CONSEQUENCES	NM	28512		1800Z-SU
6-----				
BIG FOOT	CA	28710	1st Sun	1700Z-SU
BIG FOOT	CA	28710	2,3,4 Su	0300Z-MO
CHANNEL ISLANDS	CA	28750	1600PT	2300Z-SU
CITY OF PERRIS	CA	28915	0900PT	1600Z-SU
GOLDEN BEAR	CA	28805	1300PT	2000Z-SU
QRP NET	CA	28780	1400PT	2100Z-SU

CHAPTER	QTH	FREQ.	L/PI	ZULU
6-----				
WILD BURRO	CA	28698	1500PT	2200Z-SU
7-----				
CINABAR MOUNTAIN	ID	28850		2100Z-SU
EVERGREEN STATE	WA	28950	0900PT	1600Z-SU
GOLDEN SPIKE	UT	28875		2100Z-SU
SILVER DOLLAR	OR	28777	2100PT	0500Z-MO
WYOMING TEN TEN	WY	28670	2100MT	0300Z-MO
8-----				
CROSSROADS VILLAGE	MI	28820		1900Z-SU
MID-LID	MI	28820		1900Z-SU
MOARS COUNTRY	OH	28855	1300ET	1700Z-SU
SARA'S BOX	MI	28840	1600ET	2000Z-SU
STARK COUNTY	OH	28800	1145ET	1545Z-SU
9-----				
LAND OF LINCOLN	NE	28650	2000CT	0100Z-MO
MILWAUKEE CHAPTER	WI	28805	2000CT	0100Z-MO
10-----				
CLIFF DWELLERS	CO	28730	1800MT	0000Z-MO
COLD CENTENNIAL	CO	28805		2300Z-SU*
LEWIS AND CLARK	ND	28840		1600Z-SU
MICH-DAX SUNFLOWER	MI	28855	1900CT	0000Z-MO
MOTHER OF THE WEST	MO	28810		1900Z-SU
PIKES PEAK	CO	28845		1600Z-SU
SOUTH DAKOTA	SD	28700	1200CT	1700Z-SU
SKY BLUE WATERS	MN	28715	1100CT	1500Z-SU
11-----				
CHAPTER OF BORINAGE	ON	28785		1000Z-SU
JOHNNY CANUCK	VE	28930		1500Z-SU
DOGWOOD	VE	28675		0400Z-SU
LAKS GENEVA	HEB	28850	(28185)	1500Z-SU
MAD SWINGERS	SM	28810		1500Z-SU
PENDLE WITCH/MANCUNION	G	28870		1400Z-SU
MONTE-VENTOUX	F	28410		0800Z-SU
DAISE VALLEY	F	28660		0800Z-SU
ORAGO 45 SOUTH	EL	28905		2300Z-SU
RHONE ALPS	F	28770		0730Z-SU
SCARROPO BLUFF	VE	28730		1800Z-SU
TULIP	PA	28795		0900Z-SU
YUKON GOLD PANNERS	VY	28785		1900Z-SU

## MONDAY

1-----				
NORWASTER	MA	28704	1900ET	2300Z-MO
2-----				
LIARS	NY	28110	2000ET	0000Z-TU
STATEN ISLANDERS	NY	28745	2000ET	0000Z-TU
TROTTERS AND PACERS	NJ	28755	1900ET	2300Z-MO
3-----				
BEAVER VALLEY	PA	28850	1900ET	2300Z-MO
4-----				
CHERRAW COUNCIL	GA	28565	1900ET	2300Z-MO
KENTUCKY CARDINAL	KY	28760	2000ET	0000Z-TU
SEVEN RIVERS	FL	28900		0000Z-TU
SIR WALTER RALBIGH	NC	28687	2000ET	0000Z-TU
WHITEHOUSE	DC	28725		0100Z-TU
5-----				
BAUKITE	AK	28765	1930ET	0030Z-TU
MARDI GRAS	LA	28715	1830CT	2330Z-MO

5-----				
SOONER	OK	28820	2000CT	0100Z-TU
6-----				
BAY AREA	CA	28775	2000PT	0300Z-TU
GOLDEN BEAR	CA	28610	1930PT	0230Z-TU
GREAT VALLEY	CA	28830	1900PT	0200Z-TU
7-----				
CHIEF SEATTLE	WA	28625	2000PT	0300Z-TU
SILVER STATE	NV	28777	2000MT	0200Z-TU
T-BIRD/ARIZ/ SUNSET	AZ	28575	1900MT	0100Z-TU
8-----				
CHIEF ANDERSON	IN	28785	1730ET	2130Z-MO
CITY OF LIGHTS	IL	28720	2030CT	0030Z-TU
OLD PORT	IN	28695	1930ET	2330Z-MO
9-----				
MOTHER OF THE WEST	MO	28150		0300Z-TU
PIKES PEAK	CO	28845	2000CT	0100Z-TU
10-----				
BERLIN BEARS	WG	28810		1800Z-MO

## TUESDAY

1-----				
CASTLE CRAIG	CT	28675		0000Z-WB
MINUTEMAN	MA	28609	1930ET	2330Z-TU
S.W.E. NUTMEG	CT	28690	1930ET	2330Z-TU
2-----				
LINDBERG/LIARS	NY	28780	2000ET	0000Z-WB
3-----				
ANTHRACITE BREAKER	PA	28660	2130ET	0130Z-WB
PORT MC HENRY	MD	28770		0000Z-WB
MARYLAND-DC	MD	28770	2000ET	0000Z-WB
4-----				
ALL AMERICAN CITY	AL	28625	1930ET	2330Z-TU
CHAPTER OF CAROLINAS	NC	28540	1800ET	2200Z-TU
CHATAHOOGA CHOCCHO	TN	28830	1930ET	2330Z-TU
CITY OF FIVE FLAGS	FL	28670	2000ET	0000Z-WB
DEVIL'S TRIANGLE	FL	28525	2000ET	0000Z-WB
GREAT SMOKEY MOUNTAIN	TN	28700	2100ET	0100Z-WB
OLD DOMINION	VA	28815	2030ET	0030Z-WB
OLD NORTH STATE	NC	28740	1930ET	2330Z-TU
SUN COAST	FL	28795	2000ET	0000Z-WB
5-----				
BLUE BONNET	TX	28625	1900CT	0000Z-WB
GOLDEN TRIANGLE	TX	28828	2000CT	0100Z-WB

5-----				
GREEN COUNTRY	OK	28600	2000CT	0100Z-WB
HEART OF TEXAS	TX	28640		0100Z-WB
HOUSTON SHOT	TX	28688	2000CT	0100Z-WB
REPUBLIC OF TEXAS	TX	28560	1930CT	2330Z-TU
6-----				
FRESH CHAPTER	CA	28845	2000PT	0300Z-WB
ORANGE COUNTY	CA	28755	1900PT	0200Z-WB
QRP NET	CA	28760	2000PT	0300Z-WB
7-----				
CASCADE	ID	28650	1930PT	0230Z-WB
CINABAR MOUNTAIN	OR	28885	1900PT	0100Z-WB
CRATER LAKE	OR	28930	2000PT	0300Z-WB
GRAND CANYON	AZ	28748	2200MT	0400Z-WB
8-----				
CATE	OH	28800		0100Z-WB
GREAT LAKES	MI	28860		2359Z-TU
HIGH WATER WONDERLAND	MI	28650	1900ET	2300Z-TU
9-----				
EGYPTIAN RADIO CLUB	IL	28720	1900CT	0000Z-WB
10-----				
EDMONTON ARRA	VE	28520		0400Z-WB
LONDON CHAPTER	G	28805		1930Z-TU

WEDNESDAY

CHAPTER	QTH	FREQ.	L/TI	ZULU	CHAPTER	QTH	FREQ.	L/TI	ZULU
1----- MURPHY'S LAW	RI	28820		0000Z-TH	7----- LILAC CITY	WA	28790	2000PT	0300Z-TH
2----- FLOUR CITY	NY	28725	1930ET	2330Z-WE	8----- MICHIGAN ROBINS	MI	28800	1930ET	2330Z-WE
MOHAWK VALLEY	NY	28675	2000ET	0000Z-TH	TRI CITY	MI	28960	2000ET	0000Z-TH
STATEN ISLANDER	NY	28150	2000ET	0000Z-TH	9----- BLACKHAWK VALLEY	IL	28925	2100ET	0200Z-TH
3----- COMMODORE FERRY	PA	28835		0030Z-TH	MILWAUKEE CHAPTER	WI	28905	2100ET	0200Z-TH
DELAWARE VALLEY	PA	28660	1930ET	2330Z-TH	SEN DIRKSEN	IL	28850	1930ET	0030Z-TH
PORT MC HENRY	ND	28770		0000Z-TH	0----- GATEWAY	MO	28650	2000ET	0100Z-TH
4----- CITY OF OAKLAND PARK		28745		0001Z-TH	LAND OF LINCOLN	NE	28805	2000ET	0100Z-TH
CRADLE OF CONFEDERACY		28722	2000ET	0100Z-TH	MO-KAN	MO	28842	2000ET	0100Z-TH
CYPRESS	FL	28655	2000ET	0000Z-TH	T.R.O.T.	MN	28780	2000ET	0100Z-TH
MASON DIXON	VA	28820		0000Z-TH	WAR EAGLE	IA	28615		0100Z-TH
5----- COWTOWN	TX	28710	2000ET	0100Z-TH	DK----- KING SALMON	VE	28650	2000PT	0300Z-TH
TEOTMO	TX	29375		0830Z-WE	RHONE ALPS	P	28150		1600Z-WE
6----- HOOT OWLS	CA	28810	2000PT	0300Z-TH					
KINGS VALLEY	CA	28702	2000PT	0300Z-TH					

THURSDAY

2----- LIARS/LINDBERG	NY	28730	2000ET	0000Z-FR	5----- LONE STAR	TX	28580	2000ET	0100Z-FR
MUSCON VALLEY HAMSTERS	NY	28595		0030Z-FR	OKIE RELAYS	OK	28635/135		0200Z-FR
3----- DELAWARE VALLEY	DEL	28660	1930ET	2330Z-TH	RIO GRANDE	TX	28690	2000ET	0100Z-FR
4----- CHEWAW COUNCIL	GA	28535	2230ET	0230Z-FR	TEN BAR K	TX	28640	2000ET	0200Z-FR
FURNITURE CAPITAL	NC	28675	1930ET	2330Z-TH	TEOTMO	TX	28811		0830Z-TH
GREAT SMOKY MOUNTAIN	TN	28700	2100ET	0100Z-FR	6----- 10-10 BUSINESS NET	CA	28800	1930PT	0230Z-FR
MUSIC CITY	TN	28910	2000ET	0000Z-FR	7----- GOLDEN SPIKE	NY	28825	1930MT	0130Z-FR
O.J.	FL	28525	2000ET	0000Z-FR	NORTHERN NEVADA	NV	28711	2000PT	0300Z-FR
OLD NORTH STATE	NC	28740	1930ET	2330Z-TH	0----- LAND OF LINCOLN	NE	28650	1900ET	0000Z-FR
5----- DALLAS COWBOYS	TX	28580	2000ET	0100Z-FR	DI----- MANCUNION/PENDLE WITCH G		28870		1400Z-TH
HOUSTON SHOT	TX	28188	2000ET	0100Z-FR					

FRIDAY

1----- OCEAN STATE	RI	28675	1930ET	2330Z-FR	5----- TRUTH OR CONSEQUENCES	NM	28512/580		2330Z-FR
2----- BROOKLYN BRIDGE	NY	28850		2330Z-FR	6----- WILD BURRO	CA	28698	2000PT	0300Z-SA
3----- PORT MC HENRY	MD	28770		0100Z-SA	DI----- CITY OF MELBOURNE	VK	28580/512		2330Z-SA
4----- CHEWAW COUNCIL	GA	28110	1900ET	2300Z-FR	DOWN UNDER	2L	28530		2230Z-FR
TEXTILE EMPIRE	AL	29795	2000ET	0000Z-SA	NORTH SEAS	ON	28835		1600Z-FR

SATURDAY

1----- MURPHY'S LAW	RI	28850		1700Z-SA	9----- MILWAUKEE GUARDIAN	WI	28805		1500Z-SA
2----- TROTTERS AND PACERS	NJ	28755	0930ET	1330Z-SA	PARROT	IN	28813		1500Z-SA
4----- CHATANOOGA CHOOCHOO	TN	28830	1400ET	1800Z-SA	0----- MO-KAN	MO	28842	1000ET	1500Z-SA
BRUID CITY		28655		1400Z-SA	COLORADO BIG HORN	CO	28895	1100MT	1700Z-SA
SPACE SHUTTLE	FL	28660		1500Z-SA	WAR EAGLE	IA	28900	1500ET	2000Z-SA
TRASHURE COAST	FL	28800		1800Z-SA	DK----- ALASKA IDITIROD	KL	28849		2000Z-SA
5----- BILLY THE KID	NM	28565		2100Z-SA	BIRDWING	VK	28525		2300Z-SA
OUTLAW	TX	28664		2000Z-SA	BRAZIL CHAPTER	PT	28750		1800Z-SA
REPUBLIC OF TEXAS	TX	28560	1000ET	1500Z-SA	BRISBANE SUN VALLEY	VK	28586		2300Z-SA
6----- CITY OF ANGELS	CA	28655	0900PT	1600Z-SA	CANTERBURY	2L	28715		2200Z-SA
KEYSTONE	CA	28765		1800Z-SA	DOGWOOD	VE	28815		0300Z-SA
RIVER CITY ARC	CA	28870		2000Z-SA	FESTIVAL CITY	VK	28540		2330Z-SA
SMOG	CA	28785		2100Z-SA	FLAGSTAFF	VK	28545		0100Z-SA
7----- CHIEF SEATTLE	WA	28625	2000PT	0300Z-SU	GOLD COAST	VK	28585		2300Z-SA
CITY OF ROSES	OR	28825		1700Z-SA	HERNANDARIAS	LU	28720		1700Z-SA
COLUMBIA RIVER	WA	28775		1800Z-SA	LAKE GENEVA	HB9	28850		1500Z-SA
CRATER LAKE	OR	28930	1030PT	1730Z-SA	LAKE GENEVA	HB9	28165		1500Z-SA
LILAC CITY	WA	28790	1000PT	1700Z-SA	LONDON	G	28955		1400Z-SA
NORTHERN NEVADA	NV	28711	1230PT	1930Z-SA	MANCUNION	G	28870		1300Z-SA
8----- CHRISTOPHER COLUMBUS	OH	28640	1400ET	1800Z-SA	MONT-VENTOON	P	28150		1300Z-SA
					MONT-VENTOON	P	28725		1400Z-SA
					POWER VALLEY	VK	28570		0000Z-SU
					TARCHANG	JA	28580		1200Z-SA
					WELCOME STRANGER	VK	28530		0000Z-SU

DAILY

3----- CRAZY EIGHTS	PA	28886	2000ET	0000Z	0----- SKY BLUE WATERS	MN	28715	2100ET	0200Z
4----- BULLARD ROOST	SC	28750		0130Z	DI----- LA GROUPE 10 METRES	P	28700		1700Z
OLD NORTH STATE (DK)	VA	28840	MO-FR	1430Z	OTAGO 45 SOUTH	2L	28050		0100Z
OLD NORTH STATE (DK)	VA	28835	SA-SU	1430Z	RHONE ALPS	P	28850		1800Z
7----- CHIEF SEATTLE	WA	28625	2000PT	0300Z					

10-X INTERNATIONAL

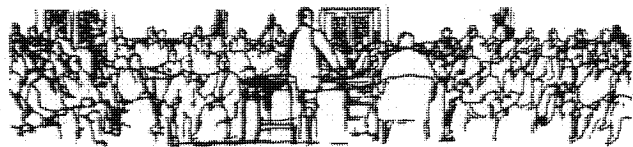
MON ONLY	CA	28775		1800Z
TU to SAT	CA	28800		

DELETIONS, CHANGES, ETC. TO KE5PQ, 804 COLLETVILLE TER., COLLETVILLE, TX., 76034. TRY TO FITE FOR HELP!

\* \* TIME REMAINS THE SAME SUMMER AND WINTER!



# COMING EVENTS



1984

## AUGUST

4-5

10-10 Summer Phone QSO Party. See p.14 Spring 1984 issue of NEWS.

19

A meeting and luncheon of the 10-10 International Net, Inc. will be held at Nick's Restaurant, 7136 DeSoto Avenue in Canoga Park, CA. Take the Ventura Freeway off-ramp at Desoto then north to Nick's Restaurant. Social hour begins at 11:00 and buffet is served at 12:00 noon. For reservations, at \$9.00 per person, please call Norm Lefcourt, W6IRT, at (818) 765-4475 or Jim Cass, AA6K, at (818) 363-0196.

## SEPTEMBER

15

Editors deadline date for Fall issue of the 10-10 NEWS.

23

Norwalk Keystone Chapter picnic. See p.9 of this issue for details.

28-29-30

Billy the Kid Chapter "Super Shootout". See p.9 of this issue for details of this special event.

## OCTOBER

5

10-10 Closed Contest. See p.23 Spring issue of NEWS for details.

## NOVEMBER

3-4

10-10 Fall CW QSO Party. See p.9 of this issue for full information.

4

The Annual Corporate Meeting of the 10-10 International Net will be held on November 4, 1984. The purpose of the meeting is to consider any proposed changes in the 10-10 By-Laws and to elect officers for the period January 1, 1985 through December 31, 1986. As of press time, there have been no suggestions for changes in the By-Laws. Officers to be elected are President, Vice-President, Secretary and Treasurer. Nominations are being considered by the Nominating Committee. The chairman is Bob Hartley, W6WPY, who may be reached at 16808 Ardath Av., Torrance, CA 90504, (213) 324-5182. Additional nominations may be made from the floor at the time of the meeting. NOTE: Meeting place to be announced.



From Henry Bauer, WB7SKI #21390, we received the cover photo for this issue of the NEWS. The Lilac City Chapter, in Spokane, WA, is a very active chapter and Henry has submitted many excellent photographs in the past. The cover photo shows Rachel "Ann" Saldivar, KA7RFR #36791 with her proud grandpa Les Morgan, W7QZI #26928, holding her new Lilac City Chapter certificate. According to Henry, "Ann", who is a junior high school student, does a lot of baby sitting and receives green stamps as compensation. She redeems them for radio equipment! [That's what I call enthusiasm..Editor]

# 10-10 INFORMATION

## How to become a Ten-Ten Member

Work 10 present members on 10 meters. Log each 10-10 number, call sign, date worked, op's name, location. Send list to your Call Sign Area Manager, with \$1 Registration Fee, \$4 for first years dues (foreign \$5, U.S.). Novices, foreign applicants need work only 5 present members; novices pay no Registration Fee. You will receive a Certificate, and be assigned a permanent 10-10 Number. You must pay annual dues to remain in good standing, receive the News, and participate fully in all activities.

## How to earn Bars and Plaques

Log the 10-10 numbers of stations you work on 10 meters, all bona-fide number exchanges on the air. Then list 100, no more, no less, no duplicates, thus:

1. List in serial order of 10-10 numbers. Show call, handle and location.
2. Submit only one list of 100 at a time.
3. Log books or copies of log book pages are not acceptable.
4. Give your name, address, call sign, 10-10 number, and state which Bar you are requesting (i.e., 100 Bar, 200 Bar etc.)
5. Enclose a large size SASE (20¢ First Class).
6. Mail as follows: 100-900 Bars, Willie E. Madison, WB7VZI, 10512 W. Butler Dr., Peoria, AZ 85345. 1000 Bar and up, Bill Risher, WB6OMH, P.O. Box 277, Twin Peaks, CA 92391.

With your 500 Bar comes an honorary V.P. Number, and other activities. A 500 Certificate costs \$1. Plaques are awarded for 1000, 2500 and 5000 contacts, and cost \$3 each plus 37¢ postage. Make checks payable to 10-10 Int'l Net, Inc. Please do not send cash.

## How to earn WAS

After working and getting QSL card confirmation on one 10-10 member in each of 50 states, prepare an alphabetical list by states with full data on each contact. Mail cards and list to Susan Brackeen, K1CAD, P.O. Box 7081, Johnston, RI 02919. U. S., Canadian, Mexican members send \$2.42, U.S. funds, for certificate cost and return postage. Overseas members may save about half the postage cost by sending non-returnable copies of QSL cards (Fax, Xerox, etc.). More than one card per sheet is OK, but all required information must appear, including 10-10 number. Show both sides of card only if necessary for complete information. Also include alphabetic list of states with full information on each contact, your own complete information, including 10-10 number, and \$2.60 U.S. funds for cost of certificate and return postage. Address application to K1CAD, as shown above. Please do not send cash.

## Countries Award

The Countries Award is given for confirmation (QSL's) of QSO's exchanging 10-10 numbers with members in 25 or more countries. Cost is \$5.00, U.S. funds. For complete rules and application form, send business size (#10) SASE to Alan Sherman, K1AS, RR#2, Box 662, Danielson, CT 06239, U.S.A.

---

Make any checks payable to 10-10 International Net, Inc. DO NOT SEND CASH. Canadian, Australian and New Zealand applicants are reminded that dollar amounts quoted are U. S. dollars. Your bank can tell you how much to send in your own currency to make up the required amount in U. S. funds.

Award applicants must show proof of paid-up 10-10 membership by enclosing Xerox or similar copy of current membership card or address label from a recent issue of the 10-10 News.

---

# MANAGERS

*Ten-Ten International Net, Inc.*  
Monitoring 28,800 KHz—Daily Except Sunday

## U.S.A. CALL SIGN AREAS:

1. Earle White	W1NC	117 Brattle St.	Arlington, MA	02174
2. Larry Berger	WA2SUH	9 Nancy Blvd.	Merrick, NY	11566
3. Jim Duppins	WA3RBQ	2317 Windsor Ave.	Baltimore, MD	21216
4. Dave Buschow	WD4MPG	7725 Fisher Drive	Falls Church, VA	22043
5. Grace Dunlap	K5MRU	Box 445	La Feria, TX	78559
6. Dick Rauscher	W6ANK	4371 Cambria St.	Fremont, CA	94538
7. Willie Madison	WB7VZI	10512 W. Butler Dr.	Peoria, AZ	85345
8. John Hugentober	N8FU	4441 Andreas Ave.	Cincinnati, OH	45211
9. Berniece Tielemann	N9CDO	Rt. #1	Lenzburg, IL	62255
Ø. Kevin Schleicher	WDØBXU	469 Main Street	Lino Lakes, MN	55014

The 4th Call Area has been further divided as follows: VA, NC, SC: Malcolm Spangler, K4KUT, Box 481, Shelby, NC 28150; KY, TN: Ollive C. Justice, N4IT, P.O. Box 683, Pikeville, KY 41501; AL, GA: Jim Beswick, W4YHF, Rt. 5, Box 77B, Ellijay, GA 30540; FL: WD4MPG (See address above).

## DX AREAS

ZL: T.J. "Mac" McKENZIE, ZL3RK, 73 Cygnet St., Christchurch 9, New Zealand.  
VK: LES OLSEN, VK2PEW, 3 Noumea St., Shalvey 2770, NSW, Australia.  
VE, VO: REG PEARSON, VE3RG, 39 Springdale Dr., Barrie L4M 5A8, Ontario, Canada.  
OTHERS: CARL SCHOEN, W4NJS, 2616 Glenhaven Ln., Winston-Salem, NC 27106 USA.

## Order Form

QTY	ITEM	PRICE	AMOUNT
___	Annual Dues, U.S.A. Members      New ___ Renewal	\$4.00	___
___	Annual Dues, Foreign Members      New ___ Renewal	\$5.00	___
___	Registration Fee* (not required of novices)	\$1.00	___
___	10-10 Stamps (100)	\$1.00	___
___	Membership Roster (Postage paid)	\$4.50	___
___	Membership Roster by AIR (Not avail. U.S., CANADA, MEXICO)	\$6.50	___
	Total		___

\*Registration fee is required of all new members. Make any checks payable to 10-10 International Net, Inc. DO NOT SEND CASH. Canadian, Australian, New Zealand applicants are reminded that dollar amounts quoted are U. S. dollars. Your bank can tell you how much to send in your own currency to make up the required amount in U. S. funds. Other DX member orders, through W4NJS, payable by International Postal Money Order only.

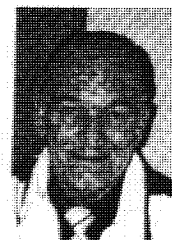
Complete the following by typing/printing and mail to your Call Area Mgr.

10-10 No. \_\_\_\_\_ Call \_\_\_\_\_ Name \_\_\_\_\_  
Address \_\_\_\_\_ City \_\_\_\_\_ State \_\_\_\_\_ Zip \_\_\_\_\_

Please enclose an SASE or stamps !

## FROM THE DESK OF...

Jim Michaels  
W6PGM 10-10#10



The composition of this issue of the NEWS is somewhat different than usual. The main reason being that the results of the Spring contest will not be included until the next issue since the final sbmittal date for those logs and scores was 1 July.

As you all are probably aware, the Los Angeles area is buzzing with Olympic activities and yours truly is actively involved. We have well over 200 local hams working the yachting events in Long Beach and many of them are 10-10 members. I recently participated in one of the Olympic Arts Festival events, namel, "TOPSail '84" which was a tall ship parade conducted in the local area. The following day, I received an invitation to dinner aboard the Korean Maritime training ship "Hanbada". What a wonderful experience and the food was delicious!

I'll take this opportunity to thank each and every one of you who take the time and spend the effort to send photographs and articles to be shared in the NEWS. If you send photos, please include all of the pertinent information about those subjects in the pictures. Remember, I have no way of knowing who is in those pictures unless you tell me.

vy 73

*Jim, W6PGM*

Complete and tear off here. Attach to front of your contest log.

## Cover Sheet

1984 Fall QSO Party

Chapter Assignment: \_\_\_\_\_

Total contacts with 10X #: \_\_\_\_\_ X 2 = \_\_\_\_\_ Points  
Total contacts without 10X #: \_\_\_\_\_ X 1 = \_\_\_\_\_ Points

Total contacts

Total Points

Lee Pasewalk, WB6MGM (Rec. Mgr.)  
18815 Yukon Ave.  
Torrance, CA 90504

TIME TO RENEW? EXPIRATION DATE  
IS ON MAILING LABEL BELOW.

BULK RATE  
U. S. POSTAGE  
PAID  
PERMIT NO. 1  
GARDENA, CALIF.

