

10-10 News

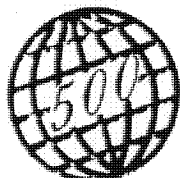
INTERNATIONAL

Volume 29 Number 2

April 1991 (Spring)

Ten-Ten International Net, Inc.

VP-WAS



AWARD

THIS IS TO CERTIFY THAT AMATEUR RADIO STATION

NEW AWARDS!

In accordance with the rules set forth for this Award
has confirmed VP contacts in each of the fifty states
with members of

The International 500 of the World

Date

Serial Number

Certificate Manager

In This Issue

VP-WAS Award
President's Report
Convention News
Winter QSO Party Results
TenX DX News
Summer 1991 QSO Party Rules

Chapter News
10-10 Nets Summer Schedule
OM/XYL Award
Silent Keys
10-10 Award Updates
and MUCH MORE.....>>>>>

NET OFFICIALS

10-10 INTERNATIONAL NEWS

President	Norm Lefcourt	W6LKT
Vice President	Hugh Sullivan	WA4QZU
Secretary	Marge Smothers	WA6ZPX
Treasurer	Gerry Gross	WA6POZ

Directors:	Peggy Pinell	G3NAE
	Elaine Nickoloff	N8CBE
	Linda Barnes	KJ4FM
	Don Weaver	K0JPW
	Gary Ward	KD7UZ
	Jack Miller	W9WYN
	Pete Matson	KC1CP
	Jim Michaels	W6PGM
	Dave Prichard	KA5OVO
	Marv Hagan	WB2SJQ

Chapter Coordinator,	Hugh Sullivan	WA4QZU
Contest Rules Chairman,	Harry Syring	WB1FTQ
Editor, 10-10 News,	Bob Arnold	N2JEU
Int'l Net Manager,	Sherm Sherman	K6PTF
Records Manager,	Lee Pasewalk	WB6MGM
Roster Manager,	Dee Glibert	KA6HQU
Supply Manager,	Dave Prichard	KA5OVO
PR & Publicity,	Chuck Imsande	W6YLLJ
Convention Manager,	Ray Moyer	WDBJKV
Scholarship Manager,	Morrie Goldman	W6EHM
Historian,	Jim Michaels	W6PGM

10-10 AREA MANAGERS

Call area	Name	Call
1.	Al Kaiser	N1API
2.	Larry Berger	WA2SUH
3.	Chester Gardner	N3GZE
4. VA, NC, SC	Rick Roberts	N4KCC
KY, TN, FL	" "	" "
4. GA, AL, P.R.	Jim Beswick	W4YHF
5.	Grace Dunlap	K5MRU
6.	Dick Kauscher	W6ANK
7.	Willie Madison	WB7VZI
8.	John Hugentober	N8FU
9.	Bernice Tielemann	N9CDO
0. CO, KS, MO, NE.	Judy Long	WD0DHH
0. IA, MN, ND, SD.	Debbie Peterson	N0KQC

All DX no U.S.A. Carol Hugentober K8DHK
Addresses are Listed on Page 31.

NET CONTROL STATIONS

Monday	Dusty	K6MPN	28.380 MHz
Monday	Lovergne	KD6JC	28.800
Tuesday	Al	W6RNX	28.800
Wednesday	Louise	N6ELK	28.800
Thursday	Bill	WB6OMH	28.800
Friday	Sherm	K6PTF	28.800
Saturday	Nat	8P6SA	28.800

10-10 International Nets are all at 1800Z

The 10-10 International News is published four times annually by the 10-10 International Net, Inc. Each full member receives a copy. This is an independent publication. Permission to reprint is granted, providing suitable credit is shown.

News items and PHOTOS are to be sent to the Editor: Bob Arnold, N2JEU, RR # 5, BOX 32 CANASTOTA, N. Y. 13032.

Ph. # 315-697-7478

Deadline For the Next Issue is:

JUNE 15, 1991

Copy deadlines are the 15th of the month preceeding publication. Publication dates are approximately MID, January, April, July and October.

Technical articles and information on all 10 meter activities or news are welcome and solicited. All copy submitted should be typed, using 8 1/2 X 11 plain white paper. Photographs, when submitted, should be black and white (color is acceptable but not as good). Include complete information on subject matter, call signs, names, 10-10 number chapter names, etc. Be sure to reference the information to a specific picture. Do not write on BACK of photo. Include your Phone Number should more information be necessary.

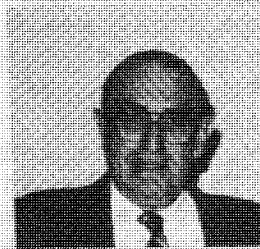
All 10-10 chapter activities and reports should be sent to the Chapter Coordinator, (NEW ADDRESS) Hugh Sullivan, WA4QZU, 2112 YORK Drive., Owensboro, KY 42301. Ph. (502) 683-0562.

AWARDS MANAGERS

100-900 Bars	Glen Harding	K7OMK
1000 Bar UP	Ed Neal	N5EBA
VP Awards	Hiram E. Wolf	W4NWP
Continents Award	Chuck Imsande	W6YLLJ
All States Award	Susan Brackeen	KA1CAD
Countries Award	Alan Sherman	K1AS
Lucky 13 Award	Glen Harding	K7OMK
Counties Award	Alice Jenkins	NR4R
OM/XYL Award	Elaine Nickoloff	N8CBE

(Printed in U.S.A.)

PRESIDENT'S MESSAGE de W6IRT



A number of events have taken place since I last wrote in the last issue of the 10-10 News. One of our Managers became a SK, three managers resigned and one of our elected Directors resigned. Director, Manager, Tom Henderson, K4CIH with great regret resigned his positions because of ill health as well as family and military commitments. Tom will attempt to remain active. I know the Board will want his input in many matters. Jim Michaels, W6PGM, 10-10 #10, was selected by me to be the replacement Director and finish the term Tom began. The Officers and Directors were asked to affirm the appointment. No negative votes were received; Therefore Jim, W6PGM 10X #10 is officially a Director. Tom also gave up VA, NC and SC as area Manager. Area Manager, Rick Roberts, N4KCC came through again and accepted the added work load. Rick now handles FL, KY, NC, SC, TN and VA. Thank you, Rick.

T. J. (Mac) McKenzie, ZL3RK became a Silent Key (SK) on December 18th, 1990. Mac had been the 10-10 ZL manager since his appointment in 1979.

Les Olsen, VK2JLO, our Australia Manager had informed me several times that he was approaching readiness to resign his 10-10 position. Other interests were taking his time. He concluded that he would not be doing justice to 10-10. Les has always done an excellent job for us. Whatever you are going into Les, Good Luck and 73 from all of us.

Both the ZL and VK areas were assigned to our DX area Manager, Carol, K8DHK. Carol accepted the assignment readily. Having overseas area managers had been a problem in our data and record keeping. By having all DX handled by one person, the efficiency of keeping our records timely is increased.

Dave Buschow, WD4MPG, our Area Manager for FL and Puerto Rico had to resign because of health problems. Dave has been a 4th area Manager since 1984. Thanks, Dave.

Jim, W4YHF, our manager for GA and AL took on (PR) Puerto Rico. Rick, N4KCC took on FL.

The new official 10-10 OM/XYL award has become a fact. Read all about it elsewhere in this issue. Elaine, N8CBE is Manager of the OM/XYL Award.

The new 10-10 Counties award started with a bang. I understand Alice, NR4R has received lots of applications and requests for more information.

10-10 is extremely lucky and very grateful to have such dedicated volunteers. They use a lot of their time and effort for all of us.

Harry Syring, WB1FTQ, the 10-10 Contest Manager, is, as always looking for 10-10 Chapters to score future contests. We have 4 per year. How about some of you Chapter Heads writing to Harry? Just ask for his instruction sheet on scoring and handling contests. See how easy it is. And it's Fun too. Maybe your chapter would like to volunteer?

The 10-10 1991 Convention in Dallas, (Arlington) Texas will be upon us soon. June 7, 8th and 9th. Lots of activities are scheduled. Tom and Ray are working their buns off for us.

In the last issue I asked for comments and suggestions for the improvement of 10-10. I received several and the appropriate Committee have been informed.

The new 10-10 Bylaws shifted control of 10-10 from 4 or 5 people to 15. Also included were all of the paid up membership in the election process.

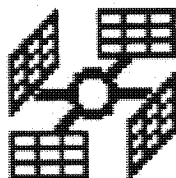
I believe we need guidance, input and suggestions from all of you, not just the few vocal members. What do you want 10-10 to be? I am repeating last issues list of what each COMMITTEE is charged to handle. Included is the Name and address of that committee membership. Please give each appropriate committee your input. It's important. Also write to me with suggestions for AGENDA items to bring up at the Board of Director meeting. Currently being considered is a (rag chewers) QUIET zone for our QSO parties, a U.S. WAS capitol award and maybe a Worked all Country Capitol Award.

1. **Planning Committee:** Will communicate with members and chapters to plan each years Directors meeting. Plan for the Biennial 10-10 Convention, seek out convention city and chapter volunteer. Consult with the Treasurer. Check 10-10 policies, infractions and Bylaws excluding membership. Suggest adjustments in rules, report to Board. Don Weaver, K0JFW, P.O. box 443, Osawatomie, KS 66064

Jack Miller, W9WYN, P.O. box 123, Brookfield IL 60513

2. **Membership Committee:** Will seek from members, etc., improvements and or changes in membership rules pertaining to the Bylaws. Set up most efficient and uniform procedures for Area Manager duties. Define area manager duties. Interface with Area, Records, Silent Key and Supply Managers. Report to Board.

Elaine Nickoloff, N8CBE, 5383 E. Atherton Rd., Burton, MI 48519
Dave Prichard, KA5OVO, 16314 Thunderbay Dr., Houston, TX 77062



3. **Finance, Committee:** Help Treasurer with budget and dues forecasting. Oversee pricing of awards, etc. Contact chapters and members to help promote scholarship donations. Interface with scholarship manager. Also, promote Estate, Trust and Will beneficiary donations for and to 10-10. Specific contact with Life members. Report to Board. Gary Ward, KD7UZ, 7008-B SW 184th Ave., Aloha, OR 97007

Marv Hagan, WB2SJQ, 353 Woodmere Blvd., Woodmere, NY 11598

4. **Operations Committee:** Help set rules with variations to promote increased participation. Seek nominating and vote counting Committees for the 10-10 Biennial elections. Work directly with 10-10 Contest, Awards managers. Also, the Net and Chapter Coordinator to help increase member enjoyment and participation. Specific liaison between chapter and member in attempt to increase on air contacts and suggest possible ways to simplify paperwork, if appropriate. Report to Board.

Peggy Pinnell, G4MAE, 31 Sidney Rd. Barkingside, Ilford IG6 2ED Essex England.

Jim Michaels, W6PGM, 3102 Lomina Ave., Long Beach, CA 90808

5. **Communications Committee:** Consult with members, Public Relations Manager and News Editor, to increase 10-10's public and amateur radio exposure at conventions, fairs, etc. Investigate the possibility of paid advertising in the 10-10 News. Peruse Official and proposed 10-10 publications, suggest and submit changes. Report to Board. Linda Barnes, KJ4FM, 310 Sequoyah Dr., Kingsport, TN 37660

Pete Matson, KC1CP, 73 S. Edgewood Rd., Niantic., CT 06357

Statistics: During the year 1990: 10-10 added a total of 3,358 new members. Total DX = 315 Total U.S. 3,043. Top 3 spots 4th, 6th and 5th call areas.

73 fer now, BCNU in Dallas.
Norm Lefcourt, W6IRT.

Not much room in this issue so I'll drop the usual editorial. Just a quick note though. Sorry about the lack of pictures in this and the previous issue. This issue is due to the large amount of information that had to go into it and the previous issue was due to the Christmas holiday season and the difficulties of getting stuff done in a largely Italian Catholic town at that time of year. Things will get MUCH better in the next issue.

News Quickies

Jack Miller W9WYN, Director and Vice-Chairman of the Planning Committee, wants to thank all those who have written to him with ideas and suggestions which will be used to formulate future policies of 10-10. To those who have not done so and desire to have their thoughts presented to the board should write to Jack or a director of your choice before the convention. Please communicate with the directors, now is the time to express your views. Jack also notes that suggestions for the 1993 Convention for sites and volunteer hosts are being sought.

The Gateway Chapter of 10-10 International will celebrate the 1,000th consecutive weekly net on Wednesday, June 31, 1991. The Gateway folks are justifiably proud of their record of consistency and longevity. You're invited to check in on any Wednesday evening net at 8:00 p.m. Central time on 28.650 Mhz.

A letter forwarded from Grace Dunlap K5MRU from Phillip Welsh N5OAB brings news of a new Amateur Radio club forming at the Harry S. Truman Middle School in San Antonio, TX. Phillip asks for support in the form of old books and code practice tapes to get things off the ground. You can contact him at 1018 N.W. 34th, San Antonio, TX 78228. (Editor's note - we need MORE hams out there doing this type of thing. No code is here to stay and we had better make the best of it. Growth in the hobby will keep Amateur Radio alive and well into the 21st century.)

L. B. Cebik W4RNL (#41159) provided an excellent article on a portable, rotatable dipole complete with construction diagrams and details. Sadly, there simply wasn't enough room to include it this issue. Possibly next issue if details of the Dayton HAMVENTION and other events don't take up lots of room.

I had promised a short article on using the sunspot numbers on WWV to "predict" short term propagation. Again, no room for it this issue. Thanks to Al Sargent VY2BJJ (#50496) for the letter about it.

Two members of the Smoky Hill chapter of the state of Kansas are running a special event station called Desert Storm for 100 days in the Novice portion of 10 meters. Mike Dugas KE0LD and Barry Horowitz KD0ZK are retired Army. The station

started operations on March 1, 1991 and the only requirement is a contact with either of the operators on 10 meters. Send a SASE for the "Operation Desert Storm Certificate". It's a three color certificate in red, white and blue. The SASE should be a number 10 or larger. Check around 28.410 and 28.450 when the band is open.

Dave McCardell WD4EWB (#10760) asks that 10 meter nets give a bit of priority to mobile station who often run 25 watts or less when exchanging 10-10 information. If they are forced to wait until last quite frequently the conditions change and any possible contact and info exchange are lost. It's up to you, just a suggestion that LOTS of mobile operators would appreciate.

Pete Matson KC1CP asks for a list of the officer's addresses. I don't have one but will see if it's possible to make a list available in a future issue. If you have a call book handy you can get the addresses from that until an official list becomes available.

Several folks have written about the sometimes small type face (like this one) used to make up some articles in the News. When space is at a premium the only way I can get the information to fit is to shrink the typeface. Sorry to those who can't easily read it but there seems to be no other way sometimes.

Pat Hirst LUIDF (#42997) writes to ask that I use metric measurements when publishing antenna articles and the like. I'll try to do better in the future and include a conversion chart where space permits with each article.

The 1991 ARRL convention will be held in Saginaw, MI. A great PR package arrived from Joseph Turner K8COF on the Convention Committee. I wish space permitted a reprint of the schedule 'cause it looks like a GREAT convention on the 23rd through the 25th of August. Contact those folks at P.O. Box 1783, Saginaw, MI 48605-1783. Sorry I won't be able to attend but a local special event station will be keeping me quite busy then.

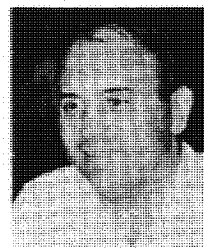
And finally the Northern Kentucky Amateur Radio Club will hold their HAM-O-RAMA on Sunday June 9th at the Erlanger, Kentucky Lions Park. They've asked for 10-10 information and I'll be sending along some issues of the NEWS for them. Maybe a close by Chapter can set up a display if none is present involved. Contact Loren Rood KD4PN P.O. Box 1062, Covington, Kentucky 41012-1062.

And for this issue that's the end. I have plans to attend the HamCom Convention in Arlington so I hope to see you all there!

Till next issue,
Bob Arnold N2JEU

TenX DX News

Mike Davidson KC5CP



The winter months here in Texas have been great for DX, a record setting Solar Flux occurred in February, the QSO Party set new records and the number of rare countries has been significant. Great DX conditions occurred when the Solar Flux went over 350 just before the QSO Party. The QSO Party provided me with 1200 contacts and lots of DX. The past 3 months I worked six new countries and I received five new QSL cards for a total of 196 countries confirmed. I will try to give you some of these stories behind these new countries and the action heard on the band.

The band has been opening during the daylight hours to Asia & Europe during the morning hours and into the Pacific in the afternoon everyday for us in Texas. The DX stops about two hours after sundown but Sporadic E layer skip may occur for short skip contacts after the DX is gone and may last for 2 hours. If you are looking for Countries this is a good time to go hunting. Well it is time to crank up the tower as high as possible and lets see what DX is lurking.

Feature DX Station for March 1991:

KA2CC is Charlie at Camp Zama in Japan. These 2x2 calls are reserved for Auxiliary Military Radio Stations. He is very supportive of TenX and participates in the QSO Parties. By the time you read this he will have moved back to Arizona and will be waiting on a new call. Charlie uses a computer to keep track of his logs especially on his trips to Minami Torishima. QSL to Charlie Carpenter, USAISC-J, Box 1133, APO San Francisco, CA 96343. Enclose an SASE.



Photo of KA2CC on Minami Torishima 88.

Whats new? I want to welcome our 84 new DX members that have joined this fall: Europe 52, Asia 4, S America 4, Pacific 1, Canada 20 & Africa 3. Still no info from the VK & ZI new members. The most sought after DX will be the following: A61AD, EA6LA, UA2FZ, SP9IKF, A45ZQ, A47RS, J6LMV, LZ1HA, LZ1CF, HH2JO, UL7OB, UD7DWC, RB7GG & OH9OM.

Here is DX info collected over the air.

Lloyd and Iris Colvin, W6KG & W6QL have been in Africa 6 months and completed their DXpedition on Feb 17th. They operated in the following order of operation: 5H0QI Tanzania, 7Q7KG Malawi, C9QL Mozambique, ZS9/W6KG Walvis Bay, and 9U5QL Burundi. Several of these countries have no active amateurs and obviously no TenX so all were rare countries. They made several side trips to countries where either time, fighting, or non-availability of licenses prevented operations. They said the pileups were enormous and they enjoyed them and learned to copy stations in the noise and QRM. They made nearly 40,000 QSOs and their 6 month operation was a great success. They have now visited a total of 218 countries. (This is very close to the total number of possible TenX countries available!!). They have qualified for DXCC in more than half of these countries! As always QSL to YASME Foundation, Box 2025, Castro Valley, CA 94546 and include a return SASE and possibly a donation.

G4OJH is Andy in England. He continues to be very active in the DX contests. Andy runs 400 watts to his home brew antennas. Andy told me he is 37 not 57 (typo last issue) and he is starting a County Hunters Net on Monday at 1700-1800 on 28370. He will be looking for a stateside helper as during the summer we will loose skip to Europe. Any volunteers? QSL callbook.

ZV4B was a Brazilian club station operated by PY4VD Victor during a recent contest. Victor wrote me a letter thanking me for the DX help and gave me a list of the QSL cards he was waiting on, etc. QSL callbook.

Ron SP8ARY operated during the QSO Party. QSL to Ron Rydzewski, P.O. Box 79, 23-210 Kasnik, Poland. SP9IKF Jalek Sosna is now the second member from Poland. He will help increase your chances of working a TenX from Poland. His QSL route is Swierklanska 17, 44-200 Rybnik, Poland. Please remember that a DX stations requires postage when you send them a QSL so inclose a green stamp.

LZ1CF is Christo and one of a handfull of Bulgarian hams now with TenX numbers. QSL to Christo Nazlev, PO Box 61, 4000 Plovdiv, Bulgaria.

7J1AIM is Mike with a special Japan call. Mike had a previous call of NL7RO when he was last in Alaska. Mike's letter asked me to thank all of you that had a QSO with him from Adak, Alaska. Special thanks to KB7GSP Bob in Sun City Arizona who each day gave him the warm temperature reports while Mike spent the winter in AK. He is running only 10 watts to a miniquad on 28370 at 0245. The QSL route is Mike Stone, PO Box PSC 2612, APO San Francisco, CA 96293. SASE.



7J1AIM Mike at his Alaska shack as NL7RO.

JHOBBE/JD1 is Yuu operating from Ogasawara which counts as a separate DXCC country from Japan. There are no members on either of these islands and you must wait for someone to visit and ask if they have a TenX. I finally got lucky with Yuu on Feb 11th for a new one. I am still waiting on the QSL but try this route: Yuji Yamamoto, 977 Imaizumi, Hirokami, Kitauonnuma, Niigata 946, Japan.

T3ONAD is Bob on the island of Tarawa in W.Kirabati and he has a QSL mgr of JO1CRA. Bob is very active as I have worked him about 3 times recently. Look for Bob on 28477 at 0200. He was running 100 watts to a 3 el. tribander. The QSL manager is Hide Aimonu, 2644 Tsuruda, Utsunomiya, Tochigi 320 Japan.

Bob N200 was operating as 9M600 in E. Malaysia during early November. Bob also went to 9M2 on his trip and has now returned to the US. Bob sent me a QSL for a new country. If you need a card QSL to Bob Schenck, PO Box 345, Tuckerton, NJ 08087.

5Z4BI is Bill who is now living in Kenya. We talked for 30 minutes on 28491 at 2020. Bill has been a member for ten years and recently renewed his membership now that he is working as a Finance Director for Delmonte Kenya Foods. They have pineapple plantations in Kenya for export. Bill is the Treasurer of the Kenya Radio Society and is one of 5 active 5Z amateurs. His station is a TS440 and amplifier that feeds a Cushcraft A4. He remembers how things use to be in

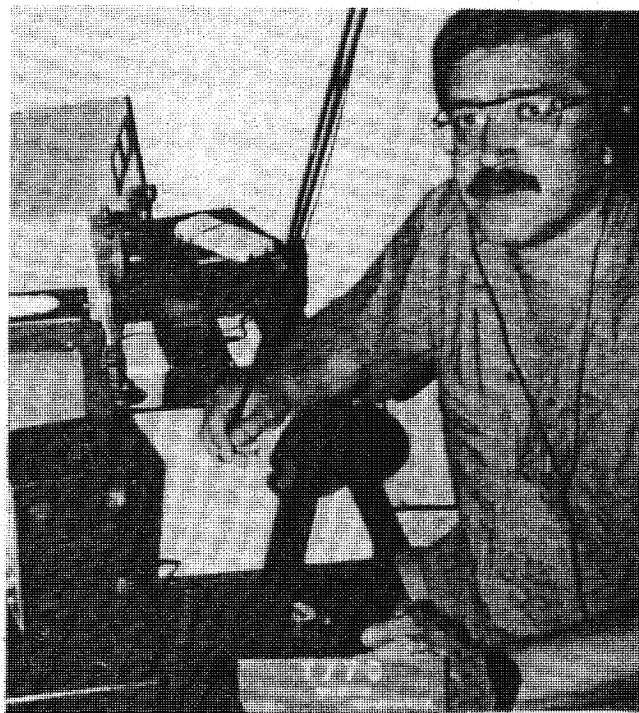
California with a small lot and lots of TVI. All his neighbors had all kinds of problems but now it is different. If you need a QSL he has a manager W4FRU John Parrott, PO Box 5127, Suffolk, VA 23435 and the usual SASE.

Bill told me about a Kenya award for working 5 Kenya stations from the Radio Society. Get two other amateurs to confirm you log entries and send that along with either ten dollars or 15 IRC's to Kenya Award, R.S. Kenya, Box 45681, Nairobi, Kenya. This is also the QSL bureau for Kenya. There are two other TenX in Kenya: 5Z4BH and 5Z4LL.

4U1UN was again active from the United Nations in NY on 28008 at 2000 and they have been in the ARRL DX contest. The UN in Switzerland 4U1ITU was active on 28057 at 1645 and was also in the DX contest. Most of the operators of ITU are guest ops so get the QSL info over the air. QSL 4U1UN to NA2K Harry Westervelt, 72 Kuhlthau Ave., Milltown NJ 08850. Enclose a stamped SASE.

Achim, C9EC, has been active from Mozambique. He was recently active as 7Q7EC from Malawi. He operated mostly cw during the month of January. Reports of numerous foreign amateurs who have applied for permission to operate from C9 are surfacing since the C9QL operation. My thanks to Lloyd & Iris who have opened the door for others to operate from Mozambique. I worked him on 28025 at 2000 and QSL direct to DF3EC, Achim Rogmann, Frankenstr 34, D-4190 Kleve, Germany. Now that there has been two separate stations on from C9 maybe some of the ops from the various embassies will be able to get on the air.

Tony T77C continues to be very active. QSL to Tony Ceccoli, Via Delle Oarrare, 67, 47031 Murata, Rep. San Marino (Via Italy). Watch 28455 at 1500 & 28021 at 1400 for Tony.



Tony T77C at his station in San Marino.

VP2V/WDOENG was Tim in the Br. Virgin Isl. He returned home and sent me a modified QSL card. Tim added the VP2V to his card which will be OK for country credit. QSL Tim Fogarty, PO Box 743, Cushing, WI 54006. SASE.

OH7/UV9FM was operated by Vlad who is now very active from his home QTH after his trip to Finland. Vlad operates around 28415 at 1400. Vlad, UV9FM, is coming in 59 plus today from zone 17 in Perm. He told me he is running 200 watts into a 6 el yagi, nice antenna. He has been a member about 2 years gives out his number all the time. QSL to Vlad Rozhin, PO Box 577, Perm 614022 USSR.

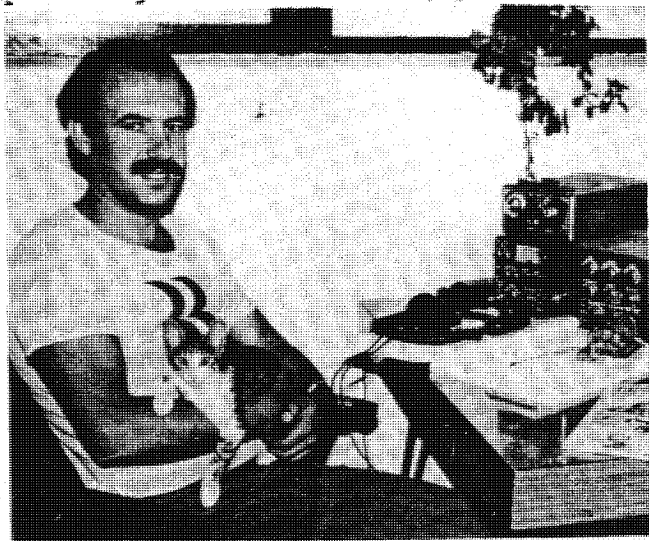
Dennis, STODX (ex-TZ6MG), is active on 20 & 15 from S.Sudan but no one has reported him on ten. Dennis works for a relief agency and he is using a borrowed rig & vertical antenna. The QSL cards will be good for DXCC credit. If anyone has any equipment to donate, please contact his manager, WB2WOW.

Bob, VP2E/AA1M, was on Anguilla for about a week at the end of January. QSL to Robert Reiser, 6 Savin St., Burlington, MA 01803.

Carl, AH6Q/BV, was traveling in Kaohsiung Taiwan, when I worked him on 28440 at 0300 in late Feb. This is the first Taiwan TenX activity I have ever heard and was one of my new countries. Carl said to QSL to his US address: Carl Koch, 9975 Lane St., Denver, CO 80221.

UL7ACI is Yuri in Kazakh who can be found on 28475 at 1600 on several days of the week. Yuri is very active and also has a very good station and signal. QSL to Yuri Semenovich, PO Box 70, Shevchnko, Kazakh 466200 USSR.

LZ2RS is Romi who is very active on ten. Look for him on 28466 at 1400-1600. QSL to the bureau or direct to Rumen Stefanov, PO Box 134, 5300 Gabrovo, Bulgaria with postage. The photo below shows Rumi with his home brew amp feeding a six element log periodic!



LZ2RS Romi with his home brew station.

John, W4LCL, ex-YBOACL and ex-JY9LC has returned to Indonesia. It will take John several months before he is back active on ten. No current address or call as yet.

Postal Rates.

All of us are aware the postage rate is now 29 cents per one oz. for domestic and 50 cents per half oz. Airmail. One oz. to Mex is 45 cents, Canada is 40 cents and all others is \$1.00. You can see that the cost of mailing your QSL has increased! We complain a lot about the USPS but I found a chart that compared the US with other nations and we had the lowest first class rates. The cost in Germany would be 67 cents, Italy 62, & Australia was the closest at 33. According to the USPS stats, when inflation is adjusted out of the comparison, a 29 cent stamp costs no more today than it did in 1974, when the price was 10 cents. Catch this: The postal service claim doesn't add up to much when you consider what would happen if you tried to mail a letter today, using a 10 cent stamp that was bought in 1974! Return to sender!

Letters to the DX Editor:

K5LBU/9J2 is Frosty who has moved from Houston to Zambia. Frosty writes that he is still waiting on 9J2CF which he hopes will be issued to him soon. He was tuning on ten during the QSO Party and found three of us from Houston. He could only tell us we were loud in his letter, hi. He is using an old FT101 with a trap dipole in a V shape. When he finally gets on the air you can QSL to Charles Frost, Box 50599, ZA 15101 Ridgeway, Lusaka, Zambia. Anyone hear him on the air please drop me a card as to his freq & time.

K4HAV just sent me his latest TenX Contest Program for the IBM PC. The contest program was used during the Winter QSO Party and there were serious problems that caused some of us to lose contacts during the heat of battle. Jim and I talked about the bug and it has been fixed and also enhanced. Jim is also working on a new program to keep track of the Counties, Bars and DX. I expect that by the time the convention is rolling around it will be finished. He told me that he wants to come to the convention and show off his programs and DX 10-10 List. I would like to see a forum on the workings of programs & list. Jim has spent many hours developing the program, there are always things you forget to cover when you write programs but time fixes most bugs/problems and it gets better, hi. For those of you who have IBM PC type computers you can get a demo diskette limited to 25 QSOs for \$5 (refundable on purchase \$25 total) from Hardy Data Systems, 306 Frances, Sylvester, GA. 31791. Jim's phone 912-776-3583.

The other item Jim has done a good job on to print a alphabetical list of DX stations in his DX 10-10 List. Jim takes the DX calls, sorts them and then prints them in neat columns. The 6,850 calls are on 14 pages in a spiral binder and printed on a excellent printer. The serious DXer needs this cross reference which is updated monthly and cost \$5 postpaid (\$8 DX Air Mail).

Whats in the Future?

Jim Smith VK9NS may have been in Bangladesh as S2JS by the time you read this article. Jim lives on Norfolk Isl. with his wife Kirstie, VK9NL (not member) who will join him on this trip. My info has their arrival about March 24th and they could remain for 2-3 weeks. Jim operated from Bhutan as A51JS last April and made 15,000 contacts and he has permission to operate from there again in late April or early May. Jim left a complete station in Bhutan with the expectation that an old friend A51PN (not member) might be allowed back on the air. The ARRL has accepted the A51JS documentation and the cards count for DXCC. All QSL for Jim go to Box 90, Norfolk Isl. 2899 Australia. If you have worked Jim in multiple places, he will only accept one call per QSL return envelope. Can you imagine what a QSL chore it is when you have made tens of thousands of contacts and someone sticks several calls into one return envelope. I have to agree with his request, one call per envelope.

Ron, KA6NAL, and Brian, KF6HI, will sign /NH8 from American Samoa March 23-31. The usual DX freq 28495 & 28025 as well as other bands. For those looking for Islands award they hope to be on from Manu (OC-77) or Tituila (OC-45). QSL go direct for KF6HI Brian Hamerski, 2595 Plaza del Amo, #415, Torrance, CA 90503 and KA6NAL to Ron Burch, 14867 Dublin Ave., Gardena, CA 90249.

International Marconi Day 1991 is Sat April 27. All IMD stations will operate for 24 hours beginning at 0000 UTC. These stations will usually have the IMD suffix to distinguish their special event station.

Canada will commemorate the 100th anniversary of Ukrainian settlements in March & April. The following prefixes may be used: VA1-8 in VE1-8 call areas, VC1, VC2 in VY1-2, VC9 in VY9, VO7-8 in VO1-2. Special event stn VA100U will be active during this period on ten and QSL to VE3IPR, John Sklephowycz, 300 Deloraine Ave., Ontario M5S 2B3.

St. Peter & Paul Rocks again by PS7KM Karl in May 91.

Saeed Al-Maktoum is A61AD and has a stateside QSL manager of Don Greenbaum 250 Standish St., Duxbury, MA 02332. Don has operated from Saeed's QTH last year where I missed him on ten. I worked Saeed before he got his number and now I will have to work him again on ten for a new country, hi.

Vince EA6LA is a new member from the Balearic Isl. QSL to Vincente Piza, PO Box 10123, 07080 Palma de Mallorca, Balearic Isl., Spain.

QSN Reports:

SP8ARY 28415 at 1530.	4U1ITU 28057 at 1645.
FOOIGS 28532 at 1955.	GD4PTV 28508 at 1915.
P43WLP 28455 at 2030.	GD4WBY 28589 at 1400.
UL7ACI 28462 at 1330.	VK9NS 28451 at 2345.
GM4LDU 28415 at 1536.	VS6CT 28495 at 2345.
HP6AYV 28429 at 2300.	BY4RB 28487 at 0130.
4U1ITU 28490 at 1300.	4U1UN 28011 at 2100.
TZ6VV 28432 at 1730.	TA2AU 28765 at 1550.
GU2RS 28520 at 1616.	A61AD 28493 at 1315.
YC3OSE 28039 at 0130.	J6LQC 28472 at 0001.
TI2JJP 28475 at 2215.	FOOIGS 28496 at 1620.
IE2L 28496 at 1919.	CT3EU 28460 at 1715.
DU9RG 28482 at 2345.	T77C 28526 at 1645.

4X6UO is Arie in Israel. He wrote me and included the photo below. Arie chases paper along with second op Mishka.



4X6UO is Arie in Israel.

The 1991 Convention in Arlington TX will be hosted by the Republic of Texas chapter. The theme is DX and I have been asked by Ray Moyer and Tom Gilbreath to put on a DX forum. I told Ray over the air I would do the forum. So plan on meeting me and other DX types at the Ham-Com in June. I have been going to Ham-Com for the past ten years and they do an excellent job with the facilities.

Thanks to the DX stations for the photos and I need more for next issue. My address is Mike Davidson, 3518 Bellefontaine St., Houston, TX 77025. Photos must be clear, light and sharp else they will not reproduce and are unusable.

Thanks to all especially Bob Winn W5KNE who publishes QRZ DX for QSN and other info.

10-10 INTERNATIONAL NET QSO PARTIES

CONTEST MANAGER: HARRY SYRING, WB1FTQ, #23934
37 Bradford Dr. Windsor, CT 06095

10-10 QSO Parties are open to all amateurs, but only paid-up members are eligible for awards and chapter assignment of scores. They are conducted to encourage 10 meter operation and interest in the Net. Non-members may use numbers collected to qualify for membership; members may use them for awards.

RULES:

1. PHONE. Contacts must be in the Ten meter Phone band, on SSB, AM, or FM.
CW. Contacts must be in the Ten meter band on CW or RITY.
2. Exchange: Callsign, name, state, and 10-10 number.
3. A station may be counted only once.
4. Single operator stations only are acceptable.
5. All contacts must take place within the 48 hour contest period.
6. Logs must be kept in Universal Coordinated Time.
7. A DUPE SHEET IS REQUIRED OF ALL PARTICIPANTS. Computer duping is OK. SASE to me for dupe sheet sample. See Below for Additional Notes on Computer Duping.*****
8. Chapter assignment of scores may be made only by a paid-up member belonging to that chapter as a local member and able to work its Net via groundwave from the contest station.
9. Illegible or improperly submitted logs will be rejected. See below for log requirements.
10. Failure to comply with these rules or their intent may result in disqualification.
11. SCORING: Two points per contact WITH a 10-10 number exchange; One point per contact WITHOUT a 10-10 number exchange.

AWARDS: First Place certificate to each U.S. Call Area (Area 7 includes KL7); also Canada, South America, Central America, Caribbean (incl. Bermuda), Europe, Africa, Asia, and the Pacific (incl. Australia, New Zealand, KH6, and all Pacific islands). Also top ten finishers in the contest overall will receive a certificate. Paid-up individual and chapter scores are listed in the NEWS.

LOGS: Logs are accepted from 10-10 members only, and must be complete, legible, and in UTC. Each line entry must show Callsign, time, state, name, and 10-10 number, if any. A cover sheet is required showing your name, callsign, QTH, 10-10 number, membership expiration date, chapter assignment, if any, total contacts and total points. A cover sheet may be found on the back cover of the NEWS. A DUPE SHEET MUST ACCOMPANY ALL LOGS.

NEXT PHONE CONTEST S U M M E R 1991

STARTS: 0000Z August 3, 1991
ENDS: 2400Z August 4, 1991

SEND LOGS POSTMARKED NO LATER THAN
SEPTEMBER 1, 1991 TO:

COLUMBINE YL CHAPTER
C/O JUDY LONG WDØDDH
2681 ASTER STREET
PUEBLO, CO 81005

A great many contest entries are submitted using COMPUTER PROGRAM DUPING. Unfortunately many of these are proving defective, they are causing havoc for the scoring chapters. Therefore all COMPUTER DUPED logs in future contests must include a listing of precisely how the entry had been duped and a list of stations worked by either callsign or 10-10 number. If the computer duping is not acceptable to the scoring chapter through inaccuracy or vagueness, it may be ruled an unacceptable entry and be discarded.

NEXT CW CONTEST F A L L 1991

STARTS: 0000Z OCTOBER 26, 1991
ENDS: 2400Z OCTOBER 27, 1991

SEND LOGS POSTMARKED NO LATER THAN
DECEMBER 1, 1991 TO:

SAMUEL CLEMENS CHAPTER
C/O WALT DIMMOCK, N1FNV
614 OLD POST ROAD
TOLLAND, CT 06084

FEBRUARY 1991 - WINTER QSO PARTY RESULTS

SCORED BY THE COLUMBINE CHAPTER

TOP TEN			DX DISTRICT LEADERS		U.S.A. DISTRICT LEADERS		
1	N7TT	3526	ASIA	TA2AU	1	NIAPI	1891
2	VP5JN	2329	CANADA	VE6ATT	2	WB2WGR	1118
3	WA5JDU	2144	CARIBBEAN	VP5JN	3	N3CHL	1169
4	KC5CP	2122	EUROPE	F2YT	4	W4WKD	1135
5	WN9P	2029	PACIFIC	VK3CES	5	WA5JDU	2144
6	KF6VU	1903	SO. AMERICA	PY4VD	6	KF6VU	1903
7	NIAPI	1891			7	N7TT	3526
8	K0PVI	1845			8	WABRUF	1267
9	W1ZGF	1767			9	WN9P	2029
10	W6RAN	1746			0	K0PVI	1845

CHAPTER STANDINGS

CHAPTER	LOGS	POINTS	CHAPTER	LOGS	POINTS
1 HOUSTON SHOT	36	18438	33 RED RVR V (S'BOAT)	4	1375
2 REPUBLIC OF TX	30	15010	34 GRINNIN ARMADILLO	3	1340
3 CITY OF LIGHTS	50	12037	35 STEEL CITY	5	1305
4 OLD DOMINION	22	7307	36 IA. HAWKEYE	1	1293
5 CO. BIG HORN	13	6865	37 GREAT SMOKY MTN	9	1199
6 LONE STAR	14	6413	38 COWTOWN	1	1110
7 FT MCHEMRY	26	6108	39 FRESNO	2	958
8 POSSUM TROT	30	5718	40 N. I. T. T.	4	833
9 CRADLE OF LIBERTY	15	5148	41 MINUTEMAN	3	831
10 C. A. T. T.	25	4919	42 WHITE HOUSE	5	803
11 OUT LAW	7	4496	43 BORINAGE	1	722
12 SAMUEL CLEMENS	8	4386	44 CYPRESS	2	719
13 BATTLE ROAD	5	4292	45 DOWN UNDER	3	626
14 CITY OF ROSES	14	4116	46 CRAZY '8'	4	615
15 BILLY THE KID	11	4062	47 CROSSROADS VILLAGE	2	536
16 NUTMEG	7	3963	48 WIREGRASS PNUK PKR	1	518
17 WIND FARMS	13	3803	49 HUDSON VALLEY	1	406
18 MILWAUKEE	16	3791	50 MONT VENTOUX	3	391
19 SUN COAST	17	3651	51 CITY MELBOURNE	1	363
20 MO-KAN TENNERS	10	2964	52 CLIFF DWELLERS	2	359
21 SKY BLUE WATER	6	2877	53 LIARS	2	341
22 BAY AREA	14	2640	54 OCEAN STATE	1	303
23 AIR CAPITAL	3	2201	55 BOOMTOWN	2	211
24 GOLDEN BEAR	8	2103	56 28 CHAPTER	3	211
25 KANGAROO KOURT	1	2029	57 CHATT. CHOO CHOO	1	206
26 TROTTERS & PACERS	5	1844	58 ZODIAC	1	185
27 KEYSTONE	7	1812	59 BAUXITE	1	183
28 GATEWAY	9	1736	60 TEACHERS PET	1	182
29 MS. GULFCOAST	3	1605	61 LINDBERG	1	122
30 HARBORITES	7	1583	62 LAND 'D' LEGEND	1	111
31 MUSIC CITY	2	1467	63 BLACK HAWK VLY	1	106
32 BROOKLYN BRIDGE	7	1419	64 CASTLE CRAIG	1	95

D X RESULTS - INDIVIDUAL STATIONS

CALL	Q'S	PTS	CALL	Q'S	PTS	CALL	Q'S	PTS
VP5JM	1322	2329	ZLIBI	179	325	C67AAP	65	128
F2YT	1015	1713	L12RS	174	322	VE7WPC/C	63	124
V46ATT	915	1667	OH3MMH	190	304	I6KYL	71	124
G4DJH	796	1416	CT1BBJ	167	282	VK6PP	56	108
VE5BF	645	1190	F6FCB	154	254	HE7CZM	59	106
TA2AU	473	731	ZL1KQ	130	247	Y54NL	56	103
DN9CDR	412	722	FE6BXQ	129	246	ND6CQV/KH	52	100
VE3NPY	375	673	WP4CIJ	130	242	DL9VCS	50	95
VE5BOS	346	655	EASAKN	136	237	IT9NAN	55	95
PY4BD	374	623	VE2UL	122	234	UL7FZ	56	93
SM4CTI	286	515	FE6FNA	124	224	HE7RE	51	89
FIHND	270	509	IK1DEA	120	221	SM6LIF	40	79
FDILFY	261	474	IK2PZG	118	218	SM5DYC	38	72
VE3PUA	244	472	IK2DUN	110	213	VK6RG	37	70
60DNV	250	454	VE7DYX	104	202	I16JC	35	67
V61JA	248	441	C62AMR	96	192	G3MOM	35	63
OE66ND	257	436	I1VGT	108	186	ZL1LE	27	54
VE2QK	226	431	VE3JFD	90	179	HE7Z	30	51
IK1NAD	233	406	SPBARY	93	173	I16MF	24	39
I1HA6	215	404	I3NYM	92	167	VK6KWH	18	33
VE6BRX	199	396	SM4DLS	84	156	PY2DBU	17	30
CU3AN	214	369	SM2AOL	79	149	SM4RRD	14	28
VK3CBS	190	363	C67ACM	69	135	SM4PJQ	9	16
OH3MFP	210	355	I1LNU	69	132	F6HDF	12	15
G4WEY	174	328	FE6FCH	68	130	VE3VVT	2	4

AREA #1

CALL	Q'S	PTS	CALL	Q'S	PTS	CALL	Q'S	PTS
NI4PI	1042	1891	K4IVFN	280	523	K4IWEV	129	240
W1ZGP	976	1767	NIHRA	267	509	N1FUS	112	212
K1ETT	777	1404	K4ISVP	223	431	N1IBQ	107	201
K1IED	733	1365	K4IAAU	228	430	W4IWPJ	92	180
K8IHA	743	1360	WB1DWR	210	412	K4IERS	90	170
KC1EV	725	1353	NIHAD	179	346	W4ISMH	85	161
W1GUC	505	942	K1AYR	169	331	K4ISZP	49	95
N1FOJ	475	869	K1YWW	157	307	K4IRVY	48	93
W4IHL	387	725	K4IAZ	163	303	K1KZY	50	93
W4IHJC	349	648	N1FNV	142	278	K4IVRF	15	30
K4ISPD	325	612	K4IFYY	124	243			

AREA #2

CALL	Q'S	PTS	CALL	Q'S	PTS	CALL	Q'S	PTS
W2WGR	614	1110	W2KRK	115	225	W2KZE	60	108
W2JQK	210	406	W2HPU	105	205	N2KEY	55	108
N2EYL	210	397	N2LDU	107	196	K2MK	49	97
K21PW	210	385	K2HCP	89	176	KE2AG	45	89
W2COL	144	263	K2HLC	87	170	K2AAZ	45	89
K2YEG	129	251	K2PFU	81	160	WY2H	45	89
W2SXT	126	242	N02J	76	152	KE2UD	42	83
W2SUH	126	233	W2ZSW	61	122	K2GFX	22	37

AREA #3

CALL	Q'S	PTS	CALL	Q'S	PTS	CALL	Q'S	PTS
N3CHL	651	1169	KA3TOL	135	260	W4KM/4	51	99
W2HNG	450	835	WB3AEX	132	251	K3FFG	55	97
N3F06	421	760	W36FJ	118	231	KA30CH	49	95
KA3VEL	425	744	KA3MEU	98	189	N3FPY	39	78
K3ALQ	405	732	KI4IH/3	87	172	WA3JXW	36	70
KA3SZR	382	712	NU3U	82	163	W4NOI/3	34	68
N3GZE	364	687	W3FON	83	160	WB3BMA	34	68
KA3VVQ	343	636	N3HSH	75	150	KA3QOY	32	64
W3EHI	288	550	K3TUJ	72	140	KA3NMB	32	64
K3TC	233	425	K3NPH	65	129	N3CIX	34	63
W3BNO	223	421	KA3VUR	66	129	NQ3W	32	63
NA3H	197	376	KA3AVB	57	111	WA3MIK	29	57
N3EDJ	184	350	KA3HII	52	104	W3PHV	25	49
KA3SBA	173	339	WA3YJA	53	103	W3FDE	18	36
WA3TRI	182	329	WB3IZF	51	102	KA3UOL	10	20
N3FUR	144	282	W3GEZ	53	101	WA3YJA	5	10
WA3ELE	137	265	KA3WRK	53	100			

AREA #4

CALL	Q'S	PTS	CALL	Q'S	PTS	CALL	Q'S	PTS
W4WKO	654	1135	KB4WC	130	231	N4TJB	60	117
WA4HMY	615	1127	KD4UCM	118	224	KN4NY	56	112
K4PXO	556	1078	KN4SS	114	220	WA4TJM	57	110
NA4JII	569	1020	N4GYX	116	219	KB4YZ	56	107
WA4QHQ	553	1012	N4YEF	112	216	N4SRH	54	105
AA4JN	531	935	NK0S/4	110	211	N4JFV	53	103
AB4JK	496	900	N4ZCX	115	206	N4ERN	50	97
K4HAV	457	854	WA4ETZ	104	198	WB7OND/4	49	96
WC2G/4	395	726	KD4THA	101	190	AA4PR	49	95
K4HYM	362	676	WA4FWH	97	188	N4YSI	49	89
N4ANN	337	615	WV4Y	110	188	KB4IH	44	88
AB4HR	331	611	N4FBY	100	184	KD4HMK	44	88
WB4QNM	346	609	N4GIK	98	183	N4XJT	45	86
WB4GVZ	327	602	N4YGT	94	183	WD4LOO	42	84
K4HTU	288	535	W4WJV	94	183	KA4RVZ	44	83
W4PNC	275	518	W4RNL	91	176	N4EW6	43	82
WB2DBZ/4	263	508	N472P	91	176	KC4UET	42	78
KA4H	237	447	KC4URI	89	173	K4QFR	40	78
KJ4GJ	225	444	KK4TB	86	169	KB4YKV	37	74
KJ4KX	223	438	N4LBB	82	164	KC4IOV	37	73
N2EG0/4	236	437	N4GDM	85	162	KF4W	37	70
KJ4RV	232	431	WA4YJO	82	162	WK4F	33	65
N4UGM	223	413	KC4NKR	85	160	N4TWF	34	63
KA102D/4	202	375	KC4STA	84	158	WA4NOM	36	61
KA4YIP	174	338	W4LPL	88	158	N2HND/4	29	55
N4ZCG	165	310	KC4JVM	83	157	KC4FC	27	50
N4J6B	155	294	WA4MXD	78	152	KC4JAN	25	45
KC4DKD	150	280	WA4LZO	75	147	KB4WIN	22	43
N4YMY	150	280	W4PC	75	142	N4MDV	21	41
N3BLJ/4	143	276	N4ZAD	73	141	KJ4JU	14	28
WB3R/4	142	273	N4DTB	72	140	KB4YBA	14	28
WH2AAT/4	137	258	NK4H	72	134	KC4IDE	11	22
KM4JL	132	257	KC4KDX	67	128	KC4TBS	9	18
K9EHP/4	132	252	WA4INL	64	128	KB4YDN	6	10
WA4TKN	132	247	KA4RUI	64	126	KA4SAL	5	9
KU4W	127	237	N4IXO	64	124			
WA4TQJ	120	233	KC4CSA	59	118			

AREA #5

CALL	Q'S	PTS	CALL	Q'S	PTS	CALL	Q'S	PTS
WASJDU	1251	2144	WDSAPR	297	553	WASRLU	101	194
KSCCP	1200	2122	WASRNW	265	503	NSIAC	97	191
WBRAN	978	1746	NSFTF	254	481	AKSR	95	184
KBSKTY	854	1524	K6500	248	475	NSMML	92	183
KFSBB	826	1514	WA7EPV/5	252	469	WSEIJ	94	183
AKSB	817	1485	NSPLH	233	449	KBSIDC	95	182
WDSJKV/5	726	1346	AASFH	225	434	NSJVN	82	159
KBSOGX	658	1228	KASLKG	225	430	WBSVQ	86	158
KBSNVX	613	1148	KBSVV	217	415	KASLOJ	78	146
WDSBFO	616	1138	KAWNDV	214	411	NSBFO	76	145
AA6EW/5	611	1110	KASWOU	214	411	KBSLES	73	142
K650W	601	1084	WBRKK	216	408	WLLD	72	141
KCSAC	600	1079	WBRKI	219	398	NSPOS	76	139
KFSUN	582	1068	KISMH	199	379	WSDP	70	136
WVSK	574	1046	AFSA	187	361	KSLZD	72	133
WSDK	562	1037	VEJST/W5	187	354	KSBFK	69	131
K650X	524	955	NSGFN	182	348	KBSNAK	67	127
W6GVP	498	938	NSRGO	172	324	KBSLFO	65	124
WASJDM	510	936	KSETK	158	305	WBYEA/5	66	123
NSNHY	498	930	NNSY	168	304	WBSYZH	62	123
K6SND	498	909	WA9IES/5	162	304	NSACH	64	122
KFSVF	487	904	WSEFB	154	292	NSANN	62	121
KBSID	442	847	K4NF/5	149	290	NSAFV	59	113
AFSW	451	815	WJSD	156	286	AASKN	60	113
KFSCA	430	806	KD5DE	152	281	NSWFK	57	111
KISHP	414	765	WBSRN	136	265	W4KFV/5	54	108
NSOVS	411	763	WV5U	139	263	WABFBN/5	39	77
NSMLP	407	754	KESUS	133	257	NSPWH	37	73
WDSedr	406	749	NSLDI	127	242	KBSKWB	35	66
NSOYM	401	748	WSSRO	123	240	KSJRN	31	61
K50QT	405	728	KBSJII	119	230	KA0YDS/5	30	58
AASGX	385	714	NSRKM	118	228	NSAJB	26	49
NSLBZ	361	660	W7SR	117	221	WBSRUS	21	41
NSGX	337	634	AASLF	111	221	WCSL	21	40
WJSD	335	628	WBSKYR	118	217	WASBAN	21	39
WASSCE	337	623	WBSMJK	107	213	AASWC	19	35
WMSB	332	618	KASDWR	110	211	KFSKF	17	34
WVNB	311	583	KSMOF	112	211	KBSKWA	13	24
WKNB	316	577	WASTXI	103	199	WBSFNL	12	24
NSDAS	295	564	KBSGED	100	196	K7CMH/5	9	16
NSOUT	307	562	WSTJP	101	195	NSBFG	2	4

AREA #6

CALL	Q'S	PTS	CALL	Q'S	PTS	CALL	Q'S	PTS
KF6VD	1017	1903	K16DY	149	284	N6VZD	65	128
AA6UU	704	1261	K16D	138	275	WA6TDL	64	127
WB6MSE	672	1259	WA6VLS	137	272	N6XDT	63	125
WB6NFO	540	988	WA6OPZ	144	267	N6IJH	66	119
K6MPN	472	892	KC6IAK	118	231	KD6JC	59	115
WASGUL/6	460	858	WA6NEB	107	219	WB6IJY	58	112
KK6AM	401	755	WB6NRV	103	203	K16TZ	58	107
N6JM	301	561	N6FZS	103	201	N6SLE	55	103
N6SND	302	560	N6WLF	104	199	WB6AOJ	48	96
N4DLA/6	255	486	K6IGY	100	195	N6IJF	50	94
N6BDS	228	435	WA6HYD	92	173	KB6RKR	46	91
W6YLJ	226	431	N6MCF	86	170	KB6RMN	45	88
N6SUP	206	398	WA6RT	84	162	WB6POD	44	86
W6TKF	204	393	KC6NDA	81	159	KC6KRS	42	83
W6PGM	195	373	N6YGD	80	159	W6LII	27	54
N6SVD	190	370	W6TUZ	77	152	N6ZZS	27	53
K6VMN	192	361	KC6DMQ	77	150	KC6KQG	27	53
N6DZA	175	335	KB6SWH	75	145	KK6GN	20	37
KB6DLN	176	335	KB6SWI	74	144	KB6PXE	14	27
KA6GPC	160	317	AA6LP	74	141	KB6DLT	13	25
N6IFW	161	295	KB6DXR	72	141	KA6GBD	10	20

AREA #7

CALL	Q'S	PTS	CALL	Q'S	PTS	CALL	Q'S	PTS
N7TT	2003	3526	N7RV	207	397	NL7TG	94	181
WB7UZO	908	1641	N6UUO/7	191	366	N7CZ	85	166
K67IZ	780	1418	KB7GFB	182	349	KA7CII	76	150
KF7ZQ	688	1284	W7GHT	136	294	K7AJT	73	146
AA7AM	605	1140	N7AVN	132	264	N7KKQ	64	128
N7JXS	497	919	WB7DSH	132	255	N7JPF	65	126
N7EMY	476	865	WB7SYD	113	220	N7OUO	53	105
K67AM	450	853	K87LND	120	218	VE5KM/W7	51	102
KD7RX	434	766	KA7AIR	106	207	W7ISP	42	83
K71OI	417	785	WB7TIM	104	206	KB8VNT/7	42	82
K7PRZ	398	743	KA7EXP	105	205	N7LTN	37	73
N7PJP	338	634	K7QXG	102	202	KD7UJ	36	72
KB7EQW	280	494	KB7GUH	100	189	KD7YB	37	71
NL7DT/7	247	461	WA7SHW	93	185	N7AAL	29	56
N7PVL	242	456						

AREA #8

CALL	Q'S	PTS	CALL	Q'S	PTS	CALL	Q'S	PTS
WABRUF	690	1267	WAMEY	110	212	WVBB	57	111
WADWR/B	662	1180	WDBPVB	105	207	KBGJJK	51	100
WBUND	448	810	KBDEN	102	203	KBBEBX	50	99
WBPJY	280	525	WBBK	107	202	WBJMV	44	88
KBNJO	209	409	NWAG/B	97	193	NYSE	38	75
WBBSTC	211	391	WBBFDY	100	189	WBNVR	33	66
NBFU	177	347	WBBFDY	100	189	WDBHQT	34	64
KBSCH/C	177	347	WBBATI	94	182	NKGG	31	60
KBDHK	177	347	KBBJNR	84	160	KBUIN	31	60
WBUPH	178	342	WABWDM/B	80	150	KBBJJI	31	57
NBBYN	136	268	WABKGB/B	80	150	WDBE	27	53
NBBBJ	136	268	WBIIO	74	148	WDBCTC	23	46
WBJSM	120	239	KBBBYD	72	141	KBBHEK	21	41
KBBFEM	118	223	WABIMF	71	140	WUBU	11	22
KBBHGY	114	220	WDBMID	57	114			

AREA #9

CALL	Q'S	PTS	CALL	Q'S	PTS	CALL	Q'S	PTS
WN9P	1173	2029	N9HFL	147	277	N9GXA	68	128
N9ICH	409	771	W9PFCG	138	271	N9JAK	65	125
KF9B	395	709	W9PTSG	139	259	W9QMD	61	119
AD9K	325	621	W9PMRL	129	244	W19S	60	118
AK9Y	291	547	KE9CX	136	243	KA9FCF	59	117
KA9MTY	250	472	KE9WZ	120	240	K89AUI	58	114
WX9I	239	455	N9ABC	121	238	N9HIA	55	109
KD9WF	239	449	K9KKA	123	237	W9QXB	54	106
N9JTB	242	447	W19I	118	227	N9IKW	55	106
KD9OZ	278	446	W9MZZ	113	223	K9PBL	53	106
K9EUI	219	414	KD9WD	119	220	W89JMT	52	102
N9FXD	215	409	KD9XP	103	200	N9JBL	45	90
KA9VXM	205	399	W9S1J	103	196	W9TRG	42	84
W89DOF	201	390	N9AVY	97	193	K89ANG	41	82
W9ZGP	203	387	N9AVY/C	97	193	KE9BW	41	81
W9RLJ	189	363	N9III	97	191	K9UDN	36	70
N9FWM	190	359	NX9H	101	189	NQ9Y	35	70
K9RKU	185	336	KE9VK	93	186	KE9GG	34	66
W9WYN	176	346	N9HQA	93	186	K89DLN	33	64
N9FXS	180	345	NQ9Q	93	175	W9GPH	32	64
NA9A	174	334	W9OHU	89	174	W9KCM	34	64
W9VA	181	326	K89FBM	88	172	K89DLN	32	62
W9IUC	163	320	KA9MYM	84	164	N96DX	29	56
W9CEB/C	163	318	N9IBU	82	161	K9ROT	24	47
NQ9Y	161	306	KE9PX	79	154	N9HAG	21	42
K89ARA	156	302	W9TWE	80	154	KA9BLW	20	40
NT9E	161	302	W9ETU	81	147	N9JFT	20	40
N9AAI	146	285	N9JOK	73	145	AK9A	19	38
N9JHZ	144	282	N9RTF	70	139	W89VWU	19	35
KA9JNL	145	282	W89OMC/OR	71	139	W9ODS	18	34
KD9EV	147	281	N9GEF	74	136	W9ODS	18	34
N9JHZ	143	280	N9RO	65	130	K89ACT	10	17

AREA #0

CALL	Q'S	PTS	CALL	Q'S	PTS	CALL	Q'S	PTS
K0PVI	1027	1845	K5ERJ/0 M	227	428	W00APK	85	160
K0DVI	1000	1665	N0LKY	225	425	W00V	75	147
K0BCL/0	722	1318	K00IPP	218	415	N0RSH	77	146
N0HJO	722	1293	W00LL	223	408	W00RHR	62	144
K6UIX/0	676	1239	K00AMB	213	398	K00EIC	74	142
K00ECV	528	1004	N0CKW	181	346	W00NO	66	119
W00CON	501	939	W00YIW	174	321	W00KI	58	108
K00GEC	491	886	W00GFV	168	314	N01ZZ	54	108
W00PBO	439	814	K00ZIA	153	296	W00IK	54	108
K00AQU	443	814	W02MND/0	146	291	K00IKW	49	92
W00VBW	390	778	K00RX	147	286	K00EJ	47	88
N0ALC	437	775	K7EXD/0	149	261	K00EX	44	85
K00FVH	364	724	W00TV	133	256	W00YXK	45	81
N0IWI	354	656	K00FC6	133	256	K00HML	41	77
W00J	340	647	K00FFM	115	219	W00GEO	40	74
K00ADI	329	615	N00OK	108	203	K00IR	37	71
W00BLJ	311	590	K00ME	101	199	W00BO	31	60
N00J	319	585	W00DMH	99	181	N0LDZ	29	57
W00HGO	291	547	W00CYC	98	178	N7LDD/0	22	40
W00XY	288	517	W06PDZ/0	87	169	W00PF	21	39
K00WGN	281	511	W00GJH	94	167	K07JRC/0	10	20
K00EX	257	485						

TEN-TEN INTERNATIONAL CONVENTION
ARLINGTON HAM-COM EXPO HALL, ARLINGTON, TEXAS
JUNE 7,8,9, 1991

CONTACT PERSON: RAY MOYER
P.O. BOX 29721
DALLAS, TX 75229
PHONE: 817/283-8452

Convention Update

Friday June 7th -

1-4 p.m. - Greeters at the Sheraton lobby

4-6 p.m. - 10-10 Hospitality room open

Saturday June 8th -

9-10 a.m. - What is 10-10 Forum, Tom Gilbreath WD5BFO

2:30-4:00 p.m. - DXing on 10 Meters, Mike Davidson KC5CP

James Toney WA5JDM

7:00 p.m. - HamCom Banquet - Scheduled guest is a Ham Astronaut.

Sunday June 9th -

9:00 - 10:00 a.m. - Computers and 10-10, Gerry Gross WA6PDZ

Bud Hampton N5ANN

10:45 - 12:30 - 10-10 Business Meeting, Norm Lefcourt W6IRT

Please use the registration form on the next page. If your chapter will be attending be sure to get your chapter information in NOW. Keep in mind that HamCom has its own schedule that will fill in the times we do not have listed above.

TEN-TEN INTERNATIONAL CONVENTION



Ham-Com '91
Amateur Radio Convention
Arlington Convention Center
June 7-9, 1991
Pre-Registration Form
TEN-TEN INTERNATIONAL



Pre-Registration Deadline: May 31, 1991

Name _____ Call _____

Address _____

City _____ State _____ Zip _____

Phone Number () _____

_____ Single Ham-Com Pre-Registration, \$8.00 Each.....\$ _____

_____ Family Ham-Com Pre-Registration for 1 Ham & _____ Non-Hams,
 (Max of 3) in my immediate family, \$11.00.....\$ _____

_____ 10-10 International Convention Group Registration, \$1.00 Each.....\$ _____

_____ Flea Market Tables - Max of 3, \$15.00 Each.....\$ _____

A Ham-Com Registration must accompany Flea Market Table requests.

_____ Additional Flea Market Tables over first three, \$25.00 Each.....\$ _____

_____ Flea Market Electrical Outlet, 20Amp Duplex, \$32.00 Each.....\$ _____

_____ Saturday YL Breakfast, \$10.00 Each.....\$ _____

_____ Saturday DX Lunch & Program, \$15.00 Each.....\$ _____

_____ Saturday Evening 10-10Ham-Com Banquet, \$16.00 Each.....\$ _____

_____ Sunday Morning QCWA Hospitality Breakfast, \$4.00 Each.....\$ _____

_____ Tour #1, Stock Yards & Omni Theater, \$15.00 Each.....\$ _____

_____ Tour #2, Outlet Mall & Crafts Mall, \$10.00 Each.....\$ _____

_____ I have enclosed my check or money order in the amount of.....\$ _____

_____ Yes, I plan to attend the Wouff Hong!

To pay for your pre-registration with MasterCard or Visa, please provide the following:

_____ Visa _____ Mastercard

Credit Card Number _____ Exp. Date _____

Signature _____

Mail your completed Pre-Registration Form To: Ham-Com, Inc.
P.O. Box 861829
Piano, Texas 75086-1829

CHAPTER COORDINATORS DESK.....
by Hugh WA4QZU

TIMING.....If this is published before Dayton, I'm looking forward to seeing many of you; if not, I enjoyed seeing you again or meeting you - whatever! C U N Arlington, too.

NO LONGER AFFILIATED...Lancastrian, Michigan Water Wonderland, Normandy Beaches, Otago 45 South, Pendle Witch, and Peninsula Southwest for failure to file a report for more than 1 year.

REAFFILIATED.....Cradle of the Confederacy and Mad Swingers apparently never quit propagating - just quit reporting; North Star 49ers and Scarborough Bluff finally filed after more than 1 year; Thunderbird filed a report (reporter was in hospital). Also, the Operating Committee has approved the reaffiliation of the Lake Simcoe Chapter. All are reaffiliated on probation. While on 6 mos probation, Chapters must file the next two QRs or they will be gone again! After that I prefer quarterly but only one per year is required.

IN EXTREMIS.....Although I get notes/letters from some Chapters from time to time, I like at least 1 QR per yr to be on a form similar to the official one. I frequently recheck past reports and it is much easier and quicker if they are somewhat uniform. I can have fun without searching thru letters in every conceivable format to see where I missed some obscure point or change! Unless I get a QR by 5 Jun the following will lose their 10-10 affiliation: Anthracite Breaker, Baby Doll, Bauxite, Beaver Valley, Breakwater, Crossroads Village/Mid Lid, Devil's Triangle, Electric City, Orange Juice, Queens & Kings, Senator Dirksen, Silver State, Sir Walter Raleigh, and Steel City. I received reports that the ALIIs Chapter was very slow responding to applications. As they have had my application for the basic for several months now, I agree with the reports. WARNING! - apply for the ALIIs cert at your own risk.

I'VE CREATED A MONSTER.....I rue the day I started keeping records and warning Chapters who haven't filed their QR for 1 year but, members should be advised which Chapters are negligent in discharging their responsibilities. 65 Chapters were warned last year; a person who earned his amateur license should not find filing a minimum of 1 report per year so challenging. Chapter reporting requirements and performance is an area that the Operating Committee should review.

ZULU TIME REVISITED.....The Eastern time zone is 5 hours behind (earlier, slower - whatever) Greenwich (more or less rhymes with spinach) or +5 during standard time. As clocks are moved 1 hour ahead during DST, the East coast is +4 during the summer. If nets are held at the same clock time, winter and summer, the summer net is 1 HOUR EARLIER than the winter net when expressed in Zulu. Need I mention that the same logic, adjusted as necessary, should be applied in the other time zones? If you read some of the QRs you would know that the horse I'm beating still lives. Your next pop quiz will include questions on Zulu time!

RENO '91.....A Christmas note from KB6AN says the Reno Paperchaser's Bash is scheduled for 15 Aug-18 Aug at the Circus Circus. Call 1-800-648-5010 or 1-702-329-0711 for reservations. Also let Betty know if you are going.

COURTESY is one of the few remaining untaxed items - but by the time you read my lips that may not be true! K5ERJ and a number of others have mentioned the lack of simple courtesy on the air including not helping someone into a net, not pausing to listen for emergencies esp. mobiles and weak stas because we want to be known as a fast gun (key). It is a doggone good feeling to be of service and be known as a courteous operator - and the only thing I ever learned by being discourteous was how tough the other guy was! As all 10-10ers are very courteous, I suppose my comments are inane - if so, IMPROVE!

POT POURRI.....Tnx for the occasional strokes folks however, excessive force is not required - most Chapters are reporting reduced propagation - 1000th consec net for Gateway coming up - Desert Storm special by Smoky Hill Trail is a good idea - it is easier to qualify for some upgrades than to understand the instructions - have you noticed that Chapters whose members chase paper are usually (not always) the most successful and long-lived - some months this labor of love is just labor, where is Spring?

WHAT'S NEW.....

AFTERSHOCK (W6MVD) - Send for ups on 10m packet 28.195MHz-lower SB-1200 baud or 2m 145.030 and 145.650-Keyboard is W6MVD-BBS is W6MVD-1-Network Node is Diane, still must send SASE - and cts must be made on 10m (this ain't new, folks)

AIR CAPITAL (W0HIK & K5ERJ for XCountry/Pilot) - Net at 2130z winter and 2030z summer - NC is on air 30 mins earlier to clear freq and take checkins which are not taken during actual net

ALASKAN IDITAROD (KL7JGN) - DX only need 10 cts for basic - Northern Lights is an IQ for Aurora Musher only, not for basic

APPALACHIAN MTN (KB8JEB) - Skywave chkins now need only 3 Cs for basic

BRANDING IRON (KA5VVD) - Spring Roundup eff 1 Mar - collect 10 lead steers (mbrs with 6000+ pts), 10 VIPs, 10 YL, 10 TX counties, 10 OM/YL teams and 36 Mavericks (mbrs with 5000+ pts) - no dupes or WCs - +100pts - extra 25pts for FS

CHATTANOOGA CHOO CHOO (W4UIQ) - Collect RPO #s for +5 ea, # will be issued 2 those without, 1FC + SASE - Collect basic #s 1-644 for +1 ea, 1 FC + SASE - Collect Compu-Train #s for +5 ea - Wk OOC mbrs in 100 counties for +100, 1FC + SASE

CITY OF MELBOURNE (VK3CBS) - new add. 8 Kent St. Braybrook, Victoria 3019, Australia (phasing out PO Box) -

after u get VIP wrk on Yesteryear Award - 1st Series seal for \$1 covers pts obtained from 100 thru 25000 - 2nd Series seal for \$1 covers pts from 35000 thru 600000 - Ups in each prog are nbr only

CLIFF DWELLERS (W0DDH) - new OM - new freq 28883 eff 31 Mar plus jointly with Columbine - new program eff 29 Jun is a contact and point program - info, ct val and pt val will be sent to present mbrs, Alternate FC, FS & FP may be earned but not before 29 June so I won't explain here (sure I trust every one of you) - send SASE to Judy for wksht if u don't have cert yet - WAP cert is still available on all bands - it's gud to c 1 of the oldest 10-10 Chapters revitalized

COLORADO BIGHORN (KF0EX) - same OM, new call - new WAC award, \$5US, wrk CB mbrs in NA SA EUR ASIA AFR and OCEANIA, wksht for #10 SASE

COLORADO CENTENNIAL (N0CKW) - Zulu July Special - 50 stas design "FLAGS", +115 for ct with each one

COLUMBINE (W0DDH) - new cert wkshts eff Feb '91, SASE to OM

CRADLE OF THE CONFEDERACY (WB4OZN) - Earn (L)ocal for 4 net checkins during a 5 wk period - earn (L)ocal (C)harter for 39 net ckeckins during 1 yr

FORT McHENRY (KA3SZR) - eff 1/1/91 - Cornerstone, be a Chapter Member of Fort McHenry and work 10 Cornerstone members inc 1 BC + 1 C (or BC), cts not retro, inc date of ct and proof of paid up dues with application, cost is \$2 +2FS or \$3 for DX, \$1 of cost goes to Fort Mc Restoration Fund, 6 ups after basic, cost is SASE, congrats to the Chapter on a complete and very literate info sheet

51ST STATE (N8HLW) - now an affiliated Chapter - basic cert is 5 cts or IQ, \$1+2FC or \$3US for DX, upgrades for 200/400/510 et al. pts, ups are SASE

GREAT SMOKY MTN (W4RNL) - add chg to 1434 High Mesa Dr. Knoxville TN 37938

KANGAROO KOURT (WN9P) - Add is P. O. Box 30 Sparta WI 54656 - New Jury upgrade= +100 pts - wk 12 KK mbrs in ea call area, no clubsta and only 1 team mbr may be used, must inc 1 KH6 and 1 KL7, DX are WCs but deduct 5 pts for ea used - SASE

LAUREL MANCINIUM (G3BSA) - new pts for ups on Emperor cert eff 14 Feb, Trajan=10, Caracalla=15, Constantine=20, no change on others

MARDI GRAS (WA4RSA) - net chg to SUN 1600Z 1500Z

MINUTEMAN (W1MX1) - CW cert for 25 pts - may qualify on net 28150MHz Zulu Mon 0030

MONT VENTOUX (F6FCH) - Sun Freq changed to 28725MHz

MS GULF COAST LIGHTHOUSE (KE5JS) - TUE(Cal) WED(Z) net discontinued.

NIANTIC BAY (KC1OP) - new up - accumulate \$10,000 and send to Pete with usual 10-10 info - you will receive 25 words or less!

NORTH STAR 49ers (NL7D) - WAS available, Wash DC is a WC and only 1 WC can be used, mobile cts are valid (I like this - but each Chapter has the right to make its' own rules - without criticism)

POSSUM TROT (KU4W) - CW net at 2200z

RED RIVER VALLEY(STEAMBOAT) (KD5DE) - Due to a recent development, Mel may need 3 or 4 days to process upgrades instead of the usual same day turnaround - bear with him - and God Bless to you, Mel.

REGION NORD - PAS DE CALAIS (F6BNQ) - new cert w 8 ups - req 30 pts inc 2 CH or CM or C - cost is 4US\$ for US and DX, 3US\$ for Europe and 20 FF for France - CM add 36 rue Jean Jaures, 62160 Bully Les Mines, France

SAMUEL CLEMENS (N1FNV) - WAS eff 1 Mar, max of 5 C or CL may be used as WC - wrkg on a new cert series to be out soon

SCARBOROUGH BLUFF (VE3OLT) - cost of

1st 3 ups is now .50 ea. - cost of next 3 is 1.50 ea.

S. H. O. T. (N5AFV) - new cert mgr Allen Mattis, add 5314 Wigton Dr. Houston TX 77096 - reqs and values changed - basic is 1Q or 5 cts inc 1L (Locals are any with "L" and #'s 1-200) - ups are 75, 125, 200, 300 and 500 pts - basic is 2+2FC - wksht for SASE to CM

SMOKY HILL TRAIL (N0HVI) - Chg ltr desigs from-to C80-B C8M-M CS-S CL-L DX-X FC/FS-S RS-R

SO TX LGHT HRS BRGD (N5DAS) - Sun net chg to 28345MHz

TEACHER'S PET (KB8CHA) - add chg to Box 368 Hazel Park MI 48030 -

VK4 GOLD COAST (VK4ZM) - Special for zulu month of May, +1 for every Special Designator wrkd, dupe desigs assigned so +5 if u wk a mbr with same desig as u - New ups - 500pts to 2400pts +1/100, 2400 to 10000 +1/200, 10000up +1/300 - Golden Wattle +20, wk 2 mbrs in 6 of the VK call areas, 2 WCs may be used but wasn't told what they are - pts and Golden Wattle are eff 11 Jan and not retro - WACA +20, wk 10 mbrs in ea of the 10 US call areas - WAS +50, wk 1 mbr in ea st, 5WCS (not specified) may be used - Bikini +50, wk 50 YL mbrs - cost is listed as SASE which I assume is SAE plus postage for Non-VKs - net chg to 28345MHz 2300z Sat in VK Fri in US

WIREGRASS PEANUT PICKERS (W4PNC) - new CM, 2019 Aberdeen Rd. Dothan AL 36301 - Colonel Tate W4FYB is a SK



Jennifer KB2IPW (#53872) at WB2LOI's shack. WB2LOI is Jennifer's dad. She's the only 10-10 member in the house. Keep up the good work!

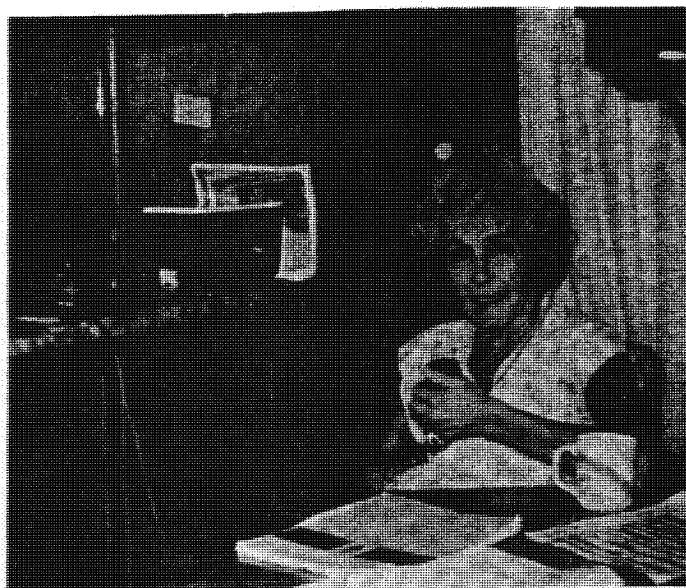
15 March 1991

10-10 NET GUIDE (WA4QZU)

Z	ZULU	ZULU				Z	ZULU	ZULU		CHAPTER	LOC	FREQ
DAY	SUMM	WINT	*	CHAPTER	LOC	FREQ	DAY	SUMM	WINT	*		
				(1) After scheduled net			MON		2359		BEAVER VALLEY	PA 28850
				* New or Change			MON	2300	2359		TROTTERS AND PACERS	NJ 28755
							MON		2359	*	SANTA FE TRAIL	IN 28695
S-T	0200	0300		SKY BLUE WATER	MN	28715	M/T	2330	0030		CHIEF KILLBUCK	OH 28490
M-S		1800		10-10 INTERNATIONAL	CA	28800	TUE		0000		WHITEHOUSE 11SEP-22OCT	DC 28475
SUN	0001	0100	*	CLIFF DWELLERS	CO	28883	TUE		0030		SKY BLUE WATER	MN 28315
SUN	0630	0730		RHONE ALPES	F	28770	TUE		0100		WHITEHOUSE 23OCT-10SEP	DC 28475
SUN		0800	*	MONT VENTOUX	F	28725	TUE	0100	0200		ANTHRACITE BREAKER	PA 28660
SUN		0830	*	RSN NORD PAS DE CALAIS	F	28430	TUE	0100	0200	*	COLORADO CENTENNIAL	CO 28840
SUN	0830	0930		BORINAGE	ON	28785	TUE	0100	0200	*	COLORADO CENTENNIAL	CO 28340
SUN	1200	1300	*	FT MCHENRY/YDR KRITCH	MD	28840	TUE	0100	0200		GREAT SMOKY MTN	TN 28410
SUN	1300	1400		LAUREL MANCINIUM	G	28860	TUE	0100	0200		THUNDERBIRD	AZ 28475
SUN		1400	*	MASON DIXON	VA	28820	TUE	0130	0230		WIND POINT LIGHTHOUSE	WI 28455
SUN		1500		JOHNNY CANUCK	VE	28930	TUE	0130	0230		BAUXITE	AR 28470
SUN		1500		LAKE GENEVA	HB	28850	TUE	0230	0330		CITY OF LIGHTS	IL 28720
SUN		1500		MAD SWINGERS	SM	28410	TUE	0230	0330		CITY OF ROSES	OR 28450
SUN		1500		TULIP	PA	28795	TUE	0300	0400		GOLDEN BEAR	CA 28495
SUN	1500	1600	*	MARDI GRAS	LA	28433	TUE	1700	1800	*	BAY AREA	CA 28475
SUN	1500	1600		PRINCE OF PORK	IL	28340	TUE		2330		CRAZY EIGHT	PA 28388
SUN	1545	1645		STARK CO. MUTUAL AID	OH	28800	TUE		2359		ELECTRIC CITY	NY 28425
SUN	1500	1600	*	STARK CO MUT AID CW	OH	28150	TUE		2359		CHATTANOOGA CHOO CHOO	TN 28485
SUN	1600	1700		SKY BLUE WATER	MN	28715	TUE	2300	2359		ERIE EXTENSION CANAL	OH 28320
SUN		1700		STEEL CITY	IN	28420	TUE	2300	2359		GREAT LAKES	MI 28480
SUN	1630	1730		POSSUM TROT	NC	28345	TUE	2300	2359		SIR WALTER RALEIGH	NC 28364
SUN		1800		SCARBOROUGH BLUFF	VE	28730	T/W	2300	0000		PAPER DOLL	GA 28805
SUN	1800	1900		BROOKLYN BRIDGE	NY	28850	T/W	2300	0000		QUEENS & KINGS/D DOLL	MT 28805
SUN		1900		CROSSROADS VILL/LID	MI	28820	T/W	2330	0030		MINUTE MAN 1st	MA 28409
SUN	1800	1900		NORTH STAR 49ER	AK	28350	T/W	2330	0030		MINUTEMAN 2nd 3rd 4th	MA 28609
SUN		1930		BLUE & GRAY	KY	28760	T/W	2330	0030		NUTMEG (So. N. E.)	CT 28690
SUN	1830	1930	*	TWIN TIERS/CHENANGO	NY	28805	T/W	2330	0030		REPUBLIC OF TEXAS	TX 28560
SUN	(1)	(1)		TWIN TIERS/CHENANGO	NY	28335	WED	0000	0100		BLUEBONNET	TX 28625
SUN		2000		DIAMOND STATE	DE	28413	WED		0100		C.A.T.T.	OH 28800
SUN	1930	2030		GOLDEN SPIKE	UT	28425	WED		(1)		C.A.T.T.	OH 28490
SUN	2000	2100	*	AIR CAPITAL	KS	28775	WED	0000	0100		CASTLE CRAIG	CT 28375
SUN	2000	2100		WIND POINT LIGHTHOUSE	WI	28555	WED	0000	0100		EGYPTIAN RADIO CLUB	IL 28420
SUN	2100	2200		AMERICAN EAGLE	VA	28340	WED	0000	0100	*	GRINNING ARMADILLO	TX 28482
SUN		2200		ARIZONA SUNSET	AZ	28475	WED	0000	0100		LIARS/LINDBERGH/METRO	NY 28480
SUN		2200	*	POSSUM TROT CW	NC	28150	WED	0030	0130	*	ALL AMERICAN CITY	AL 28400
SUN	2100	2200		TEXAS LONGHORN	TX	28380	WED		0130		STEEL CITY	IN 28420
SUN	2200	2300	*	SO TEX LT HORSE BRGD	TX	28345	WED	0030	0130		WIREGRASS PNUT PKRS	AL 28535
SUN	2300	2359	*	IOWA HAWKEYE	IA	28380	WED		0200		BILLY THE KID	NM 28365
SUN	2300	2359		TEACHER'S PET	MI	28360	WED	0100	0200	*	CRDL OFTHE CONFEDERACY	AL 28350
S/M	2300	0000		BRANDING IRON	TX	28345	WED	0100	0200		GREAT SMOKY MTN	TN 28700
S/M	2330	0030		MICHIANA	MI	28465	WED	0100	0200		SAMUEL CLEMENS	CT 28333
S/M	2330	0030		MINUTEMAN CW	MA	28150	WED	0100	0200		SHOT (Houston)	TX 28488
MON		0100		CRADLE OF LIBERTY	PA	28695	WED	0200	0300		TEN BAR X	TX 28440
MON	0000	0100	*	MS LIGHTHOUSE	MS	28480	WED	0300	0400		E.A.T.T.	VE 28520
MON	0000	0100		NUTMEG (So. N.E.)	CT	28690	WED	0300	0400		FRESNO	CA 28445
MON		0130	*	CRADLE OF LIBERTY	PA	28425	WED		1700		LAKE GENEVA CW	F 28185
MON	0100	0200		LONE STAR	TX	28460	WED		2359		BATTLE ROAD	MA 28390
MON	0100	0200		MILWAUKEE	WI	28805	WED	2300	2359	*	FT MCHENRY/YDR KRITCH	MO 28370
MON	0100	0200	*	PALMETTO (CHARLESTON)	SC	28770	WED	2300	2359		GREAT SMOKY MTN	TN 28410
MON	0130	0230		BAUXITE	AR	28470	WED	2259	2359		IA RIV VAL/ARMCH FISH	IA 28355
MON		1700		BERLIN BEARS	DA	28810	WED	2300	2359	*	STARLITE	IA 28355
MON		1800		10-10 INTERNATIONAL	CA	28775	WED	2300	2359		ZODIAC	UT 28375
MON		2230		CHIEF ANDERSON	IN	28785	W/T	2300	0000		OLD DOMINION	VA 28470
							THU	2330	0030		MI ROBINS	MI 28800

Z DAY	ZULU SUMM	ZULU WINT	*	CHAPTER	LOC	FREQ
THU	(1)	(1)		MT ROBINS	MI	28493
THU	0000	0100		CYPRESS	FL	28665
THU	0000	0100		DEVIL'S TRIANGLE	FL	28525
THU		0100		KANGAROO KOURT	TX	28605
THU		0100		MOHAWK VALLEY	NY	28675
THU	0030	0130		SENATOR DIRKSEN	IL	28850
THU	0100	0200		ANTHRACITE BREAKER	PA	28660
THU	0100	0200		COWTOWN	TX	28710
THU	(1)	(1)		COWTOWN	TX	28460
THU	0100	0200		GATEWAY	MO	28650
THU	0100	0200		MILWAUKEE	WI	28365
THU	0100	0200		MO-KAN TENNERS	MO	28495
THU	0100	0200		NORTH STAR	MN	28657
THU		0200		PHOENIX VALLEY	AZ	28560
THU	0100	0200		SMOKY HILL TRAIL	KS	28385
THU		0230		COLORADO BIGHORN	CO	28440
THU	0200	0300		BLACKHAWK VALLEY	IN	28925
THU	0230	0330		WIND FARMS	CA	28485
THU		0500	*	MASON DIXON	VA	28820
THU	1300	1400		LAUREL MANCUNUM	G	28870
THU	2300	2359		HUDSON VALLEY	NY	28595
T/F	2300	0000		BRANDING IRON	TX	28345
T/F	2330	0030		DELAWARE VALLEY	PA	28660
T/F	2330	0030		PRINCE OF PORK	IL	28340
FRI	0100	0000	*	CRAZY EIGHT	PA	28888
FRI		0030		BREAKWATER	MI	28835
FRI	0000	0100		BABY DOLL	MD	28380
FRI	0000	0100		CYPRESS	FL	28465
FRI	0000	0100	*	DRUID CITY/BRK HRT	AL	28583
FRI	0000	0100		LIARS/LINDBERGH/METRO	NY	28730
FRI	0000	0100		MUSIC CITY	TN	28495
FRI	0000	0100		ORANGE JUICE	FL	28525
FRI	0000	0100		RED RIVER (STEAMBOAT)	LA	28430
FRI	0000	0100		SO TEX LT HORSE BRGD	TX	28480
FRI	0000	0100		SUNCOAST	FL	28420
FRI	0100	0200		DALLAS COWBOYS	TX	28580
FRI	0100	0200		GREAT SMOKY MTN	TN	28700
FRI	0100	0200		HARBORITES	MA	28310
FRI	0100	0200	*	LAND-O-LINCOLN	IL	28650
FRI	0100	0200		N.I.T.T.	IL	28470
FRI		0200		OKIE RELAYS	OK	28433
FRI	0200	0300		AFTERSHOCK	CA	28340
FRI	0200	0300	*	APPALACHIAN MOUNTAIN	KY	28400
FRI		2130		DOWN UNDER	IL	28430
FRI		2230	*	CITY OF MELBOURNE	VK	28485
FRI		2230		DOWN UNDER	IL	28530
FRI	2300	2359		BROOKLYN BRIDGE	NY	28850
F/S	2330	0030		OCEAN STATE	RI	28765
SAT		0030		IMPERIAL DRAGON	VK	28400
SAT	0000	0100		FT McHENRY/YOR KRITCH	MD	28370
SAT	0000	0100	*	LAND OF LEGEND	OH	28390
SAT	0000	0100		MAINE-IACS	ME	28402
SAT	0000	0100	*	SKIPJACK	MD	28525
SAT	0030	0130		WIREGRASS PNUK PKRS	AL	28490
SAT	0100	0200		GREAT SMOKY MTN	TN	28410
SAT		0200		OKIE RELAYS	OK	28633
SAT		0210		TWENTY EIGHT	VK	28560

Z DAY	ZULU SUMM	ZULU WINT	*	CHAPTER	LOC	FREQ
SAT		0400		SILVER STATE	NV	28455
SAT		0830		TWENTY EIGHT	VK	28560
SAT		1300		MONT VENTOUX	F	28150
SAT		1330	*	RGN NORD PAS DE CALAIS	F	28125
SAT		1400		MONT VENTOUX	F	28725
SAT	1330	1430		TROTTERS AND PACERS	NJ	28755
SAT		1500		LAKE GENEVA	HB	28850
SAT		1500		PARROT	IN	28815
SAT		1500	*	RGN NORD PAS DE CALAIS	F	28780
SAT		1600		DOLL CHASERS	TX	28433
SAT	1500	1600		MO-KAN TENNERS	MO	28495
SAT	1500	1600		REPUBLIC OF TEXAS	TX	28460
SAT	1600	1700		CITY OF ROSES	OR	28835
SAT		1700		ELECTRIC CITY	NY	28790
SAT	1630	1730		BOOMTOWN	TX	28402
SAT		1730		TANGO	LU	28650
SAT		1800		CHATTANOOGA CHOD CHOD	TN	28785
SAT		1800		KEYSTONE	CA	28765
SAT	1700	1800		LILAC CITY	WA	28390
SAT	1700	1800	*	RIVER CITY	CA	28870
SAT		1830		CRATER LAKE	OR	28760
SAT		1900		BILLY THE KID	NM	28365
SAT	1900	2000		ALASKA IDITAROD	AK	28849
SAT		2000		COLUMBINE YL	CO	28355
SAT		2000		NIANTIC BAY	CT	28747
SAT	1900	2000		OUTLAWS 1st	TX	28444
SAT	1900	2000		OUTLAWS 2nd 3rd 4th	TX	28644
SAT		2030		SILVER STATE	UT	28455
SAT		2300		ALIIS, THE	HI	28730
SAT		2300	*	FIFTY FIRST STATE	MI	28345
SAT		2300	*	VK4 GOLD COAST	VK	28345



Pauline W7NNL (Never, Never Lonely!) in her Mesa, Arizona ham shack. She needs only 7 more states for 10-10 WAS. TVI problems are keeping her away from 10 right now but she reports they'll get it fixed very soon.

FROM THE TREASURER
GERRY GROSS - WA6POZ - 21274

STATEMENT OF INCOME THIRD QUARTER 1990-1991
NOV 1, 1990 - DEC 31, 1990
3TH QTR YEAR-TO-DATE

REVENUE		
MEMBERSHIP	\$ 15,723	\$ 44,913
INTEREST	2,995	8,597
TOTAL REVENUE	18,718	53,510
EXPENSES		
OPERATING EXPENSES	12,059	35,066
AREA MANAGERS	1,555	4,348
OFFICERS & DIRECTORS	415	1,353
AWARDS & CONTEST	151	1,069
OTHER MANAGERS & SERVICES	437	1,474
TOTAL EXPENSES	14,617	43,310
NET INCOME (LOSS)	\$ 4,101	\$ 10,200
SCHOLARSHIP FUND	\$ 678	
TOTAL ASSETS	\$ 164,551	



=====

NEW LIFE MEMBERSHIP from Dec 11, 90 to Mar 06, 1990

Apologies to WB2ABG #52545 who I listed as WA2ABG

00808 K3IPI	46399 WB6IMS
02847 K9EHP	46943 WB3IBU
05492 WA2NBG	47126 KB6SWI
06088 W7HOP	50911 KB6JQQ
08402 WA5FOE	51802 WA6NLG
11697 K4UVR	51873 N6SIF
12941 KF0HL	52050 KG7DR
14393 WB3BMA	52999 N0KIH
18887 W5HMU	53455 NU3N
19360 WB7UCH	53684 N4SXX
19572 KB0KF	53959 KA0UTD
23446 JE2SPQ	54625 KF7ZQ
25114 WB0SEN	54799 WD6EYD
25664 WN6CND	54825 AA5NP
29187 WD4RQK	54981 N9HZH
31221 WA4QHI	55389 N6LJZ
34436 OE3EUW	55531 VE7CKY
39625 KE7WV	55536 G4UHE
39850 KA9QCG	55675 K7M0A
41496 KA5SHP	57599 W4GHN
41531 N6KNX	57944 KA6IZT
41995 KA2WGV	58609 KA9QDK
46332 KB6SWH	

SCHOLARSHIPS

10-10 is proud to sponsor two \$750.00 Scholarships each year to two deserving 10-10 amateurs. Applicants must hold at least an FCC Novice Class or equivalent foreign authorization. There is no restriction on the course of study, but applicant must intend to seek at least an Associates degree. There is no residence area preference; however the applicant must intend to seek a degree from an institution of higher learning in the United States. Applicant must be recommended by a current active member of 10-10.

Although 10-10 guarantees the funding of these two Scholarships, members are **encouraged** to make donations direct to The 10-10 Scholarship Fund by sending checks to the 10-10 Treasurer made out to "The 10-10 Scholarship Fund." Scholarship donations should not be sent to your District Manager.

Additional information and an application form can be requested either by letter or QSL card from:

FAR Scholarships
6903 Rhode Island Avenue
College Park, MD 20740

Requests must be postmarked prior to 5/31/

New 10-10 OM/XYL Award

After many years of having an "informal" OM/XYL Certificate, the Board of Directors gave Chuck Imsande, W6YLJ, PR and Publicity Manager, the go-ahead to finalize a formal 10-10 OM/XYL Award.

The basic certificate for the new OM/XYL Award is available for contact with 10 OM/XYL Teams. The contact must be made with each member of the OM/XYL team, but not necessarily at the same time. The 10-10 OM/XYL Award is based on the "honor" system, the same as the 10-10 Bars Award, wherein QSL confirmation of the contact is not required. Your logs must be available if so requested by the Award Manager.

After receiving the basic Certificate, for contacting 10 OM/XYL Teams, a colored seal will be issued for the following additional contacts:

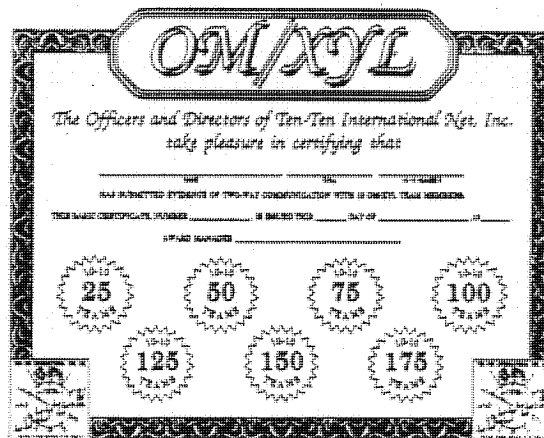
RED Seal for 25 total teams
BLUE Seal for 50 total teams
YELLOW Seal for 75 total teams
GREEN Seal for 100 total teams
PINK Seal for 125 total teams
SILVER Seal for 150 total teams
GOLD Seal for 175 total teams

A plaque will be awarded for contacting a total of 200 teams.

The fee for the basic certificate is \$2.00, either US or DX. There is no fee for the seals, except for a SASE with first class postage. There is no fee for the Plaque awarded for contact with 200 teams.

For those who now hold the "informal" certificates, they may send them to the Award Manager, along with the Basic Certificate fee of \$2.00 and a new OM/XYL Certificate along with any seals will be issued.

The 10-10 OM/XYL Certificate is 8 1/2" x 11" and printed in two colors. A place is provided for attaching seals as the level of achievement is obtained for each group of Teams contacted.



The informal OM/XYL certificate manager, Elaine Nickoloff, N8CBE, has agreed to continue on as the new 10-10 OM/XYL Award Manager. For a set of Rules and an Application please send your #10 business size SASE (Self-Addressed-Stamped-Envelope) to:

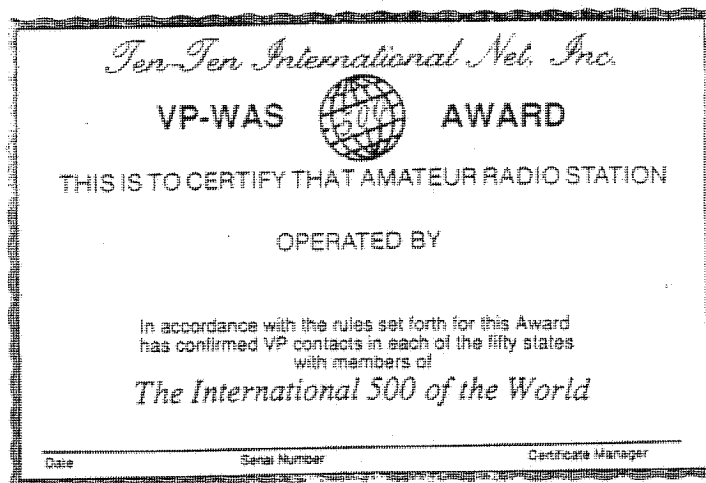
Elaine Nickoloff, N8CBE
5383 E. Atherton Road
Burton, MI 48519



OM/(X)YL Teams left to right:

Janet KB5DDX & Ray WDBJKV
Leslie KA5LKQ & Howdy KBSVV
Mavis NSJVN & Bud NSANN

They're all members of the Republic of Texas Chapter and are active in chapter events and contests.



The award is the end result of many hours of planning and research of the callbook by ROY VE4ROY to make sure there are VP numbers in each of the fifty states. It is now a reality with all of the papers completed for state list, application rules and award certificate.

This will be a challenge with odds of 57000 numbers for worked all states and only 2400 VP numbers to do the same thing. In fact, the worked all states award has issued almost as many certificates as there are VP numbers. This tells you it will not be easy. So paper chasers, this is a hard one. First you have to have a VP number to start with. There is no IQ's, no list exchange, just a lot of QSL exchanges plus plain luck of being at the right spot on the dial at the right time.

This may be of comfort to know the number of VP numbers in some states for example:.....The first 25 range from 2 to 27 numbers per state and the other from 29 to 242. This is based on the search as of last year and with about 2400 VP's when this goes into print, there is bound to be a lot more numbers added to the states. A list of states with the number of VP's in each will be available if there is any interest. Member participation is a must to keep it current with call changes or the moving to another state.

The rules are in line with mc WAS awards for fixed stations. You contacts while mobile will not count but contacts with other mobiles your fixed station will. This award is given for your VP, 10-10 number and not by call as it can change over a period of time but you must remain in the same state for credit for the fixed station (This is more lenient than most WAS awards). Xerox copies may be used instead of mailing in cards as long as all information is presented for each card. If previous held calls will be honored from the same fixed location. Correct information must be on all cards. If a card lacks the number, it will be verified from cross reference of 10-10 to numbers (Do not add the number this may deface it for other awards).

The award is open to any member that has QSL cards from the states with 10-10 and VP numbers them dated on or after the date your VP number. This may not mean with the approval of some but this is not a weekend contest where everyone starts at the same time. It is more of giving credit to all who have supported the VP-500 program for the last 20 years and a chance for a more award that will be more of a challenge than any other WAS award that is available.

VP contacts may now be made any portion of the band with restrictions, the same as 10-10 numbers, with calling frequencies 28.535 MHz and now 28.335 MHz in the Nov/Tech portion of the band.

For complete rules, cost application forms send a SASE to:

VP Awards Manager
Hiram E. Wolf W4NWP
126 W 37th Street
Riviera Beach, FL.
33404-2214

Look for you on a calling frequency and have fun hunting for the state

COUNTRIES AWARD

BASIC -25-

358 KA1SAW
359 LU1DF
360 LU1BJW
361 W1KBV
362 DJ4BE
363 N9HQA
364 KA3HZI
365 6Y5DA
366 N5OEF
367 KA9YTR
368 WA3GFM
369 K0HOF
370 KF8HS
371 WD4FZO
372 AD9K
373 WA6VLS
374 K6GCF

-55-

89 DL1ECU
90 WDBNNP
91 N5HSF
92 G4XBP

-65-

58 N9KAE
59 WDBNNP
60 PY2DBU

-75-

37 N8GFI
38 N8BBJ
39 WDBNNP

-80-

-35-

192 LU1DF
193 LU1BJW
194 WB6JOT
195 DJ4BE
196 KA1FUE
197 N9HQA
198 KA9ADD
199 IN3ANE
200 N5OEF
201 WA6VLS

25 AE2L
26 N8GFI
27 UY50Q
28 WDBNNP

-85-

197 N9HQA
198 KA9ADD
199 IN3ANE
200 N5OEF
201 WA6VLS

24 IK6DPW
25 UY50Q

-90-

17 IK6DPW

-45-

138 LU1BJW
139 KA1OKY
140 N5HSF
141 DJ4BE
142 IN3ANE
143 WB6JOT
144 HP6AYV

-95-

16 IK6DPW

-100-

15 W5EIJ

VP Awards by W4NWP

VP-100

#197-VE1BLM
198-WA3GFM
199-N7JCZ
200-HP6AYV

VP-400

#26-WB4SWK
27-K8DHK

VP-600

#13-KC9OZ

VP-200

#76-N8JCI
77-KI4IH
78-AE2L

VP-700

#9-VE4ACY

VP-800

#7-W5HMU

VP-300

#36-N1ASJ
37-KA7ICF

VP-900

#4VE4ROY

Worked All States Awards by KA1CAD

2048 KB8DWE
2049 KF7KI
2050 KB8FGS
2051 AF5A
2052 N5LBQ
2053 VE3PUA
2054 K1ZDI
2055 N7RV
2056 N3HHE
2057 KC9HP
2058 N5OAT
2059 ND9Y
2060 HP9AYV

2061 KC4ERW
2062 VE1BLM
2063 W0DIF
2064 KP9B
2065 N2EGO
2066 K5UBZ
2067 KD5ZD
2068 KA9YTR
2069 VE3MEW
2070 N9JJX
2071 WB2RQX
2072 KA1CNR
2073 N8BMJ

10-10 INTERNATIONAL NET, INC.

WORKED ALL CONTINENTS AWARDS

Chuck Imsande, W6YLJ, WAC Manager

CERT

NO. CALL

10-10

NO.

291 KA1UAQ 56510
292 KB9ALG 50672
293 K3TUJ 7561
294 IK2DUW 18397
295 I1LNU 42994
296 VE3PUA 47465
297 VK3AFM 26400
298 K6QPZ 40180
299 N8JBD 46844
300 KA2PPO 41928

301 WB4BMM 46483
302 KB6SAD 57945
303 N7JXS 48927
304 K6DMN 18650
305 KK6AW 54762
306 N1AMX 53356
307 NE7U 42206
308 K0HOF 51003
309 N5OEF 53227
310 K6GCF 53767
311 WB2RQX 30888
312 KA3HZI 53465
313 KP4CKY 21891

Top Ten by N5EBA

1. WA5JDU	19,400	6. N7KRS	12,300
2. W0RWC	18,500	7. WA9LIC	11,600
3. K5MRU	15,300	8. N5CUQ	11,200
4. PJ2WG	14,600	9. WB7NUU	11,000
5. WB1DBZ	13,300	10. W4WKQ	10,100

1000 Bar and Over by N5EBA

- 1000 -	- 2500 -	- 5000 -	- 7500 -
1185 W5JY	295 N7FAK	55 KC9OZ	23 W5HMU
1186 KA0ZIA	296 KD7UZ		
1187 N5LBQ	297 WD8JKV		
1188 WA4TKN	298 WA3WQM		
1189 N6VGI	299 WA5BBR		
1190 K0HLH	300 WN5MBS		
1191 WB2RQX	301 KB0EOV		
1192 KC9LI			

New VP Numbers

TEN-TEN COUNTY HUNTER'S AWARD

2369 KK6AW 54762
 2370 WB1HCJ 53362
 2371 GM0GMI 18449
 2372 ON7YO 40903
 2373 KJ4LG 42507
 2374 KL7GY 31442
 2375 I3UBL 18402
 2376 6Y5DA 17404
 2377 N2EII 43996
 2378 KA1VFN 56519
 2379 N5LBZ 52162
 2380 N9AYS 53572
 2381 N1HFN 52432
 2382 VE2BQB 50443
 2383 KA8PP0 41928
 2384 KC4LOR 56976
 2385 N6JKC 43526
 2386 DJ4BE 49158
 2387 KA7GSE 46213
 2388 N0ALC 22602
 2389 W1HAY 53391
 2390 N7JXS 48927
 2391 KF7KI 44991
 2392 KB2GLO 52519
 2393 KE8RO 46862
 2394 KB5GEO 47589
 2395 KB7LPR 56775
 2396 WA9MBW 45572
 2397 N2LFW 54526
 2398 KC4LLV 54378
 2399 N1HA0 53399
 2400 WB7CYO 48959
 2401 N1HGU 55080
 2402 N5ODE 55866
 2403 AA0CZ 53942
 2404 WA6NEB 21210
 2405 KA0KLC 44384
 2406 FD1LFY 51523
 2407 K4SGR 46403
 2408 4X6U0 45820
 2409 AA4JN 13228
 2410 N9JX 54966
 2411 KB9CYP 51988
 2412 N0LUW 55240

CALL	CERT #		
W6YLJ	1	KC6LKB	35
WD5INS	2	AA4UF	36
NR4R	3	W1CRL	37
W4UIQ	4	KB0ADI	38
KA6PBU	5	KA9KTY	39
K1WQU	6	KC9OZ	40
WB5SKQ	7	WD4AQK	41
K5ERJ	8	KA0BER	42
N7BZD	9	WD5IBM	43
KC1CP	10	KC5AC	44
WN5MBS	11	VE3MEW	45
W4ZAA	12	N8KRT	46
K5MOF	13	KF9B	47
N5AFV	14	VE2ERB	48
W4PNC	15	KA4UEM	49
KC4LWY	16	KL7LA	50
WB0RBH	17	WA6ZPX	51
N5SAT	18	KB9YY	52
K4NF	19	W0HIK	53
N0HJQ	20	KB0AOU	54
WA5EJB	21	AD9K	55
W5AFK	22	VE7ACM	56
K8DHK	23	N7KRS	57
N9HKK	24	NA3H	58
KB7DUX	25	W6JGS	59
KE9MA	26	KC4QKD	60
WA8DXS	27	KC4QKP	61
AE2L	28	W6PGM	62
KB0EOV	29	KA7ICF	63
K7PRZ	30	K0PVI	64
WB3FDY	31	WB6IJY	65
N7EMY	32	AM6CG	66
W7IDZ	33	PY4VD	67
WA6HYD	34	K7DMK	68

COUNTY HUNTER'S UPGRADES

200	300	500
WB5SKQ	WN5MBS	WB5SKQ
N0HJQ	WB0REH	WA80XS
AE2L	N7EMY	K8DHK
KA6PBU	KA7ICF	WN5MBS
K5ERJ	K0PVI	
K1WQU	WB6IJY	
KB0EOV	KE9MA	
WD5IBM	KA4UEM	
KB9YY	W6YLJ	
N5AFV		
WA80XS		
K8DHK		
N7BZD		
KB0AOU		
KC9OZ		
W0HIK		
WD4AQK		
N7KRS		

10-10 Silent Keys

00326	ZL2PI	A. R. Treleaven, Palmerston North, NZ
00786	K8PJE	Robert Lagucki, St. Clairsville, OH
01971	K1RTV	Edwin C. Holland, Denmark, ME
02454	W7ZGP	Ronald M. Cissell, Olympia, WA
02690	VE3AGS	Wesley E. Lawford, Toronto, ONT
02716	K40X	Glenn G. Boundy, Miami, FL
03052	W9KFO	Kenneth E. Johnson, Eaton, IN
03369	W2UBR	Francis C. MacQueen, Williamsville, NY
03831	W6FEX	William W. Newman, Smith River, CA
04704	WA4QHR	Edward L. Hinson, Mobile, AL
08653	W0OKS	Gunter A. Hauptman, White Plains, NY
09469	W6OWA	Will L. Stalnaker, Longview, WA
09523	W6AEW	Joseph H. Gurr, Los Altos, CA
09782	VE3ALL	F. J. Reeves, North Bay, ONT
10493	K0KMO	Eugene W. Fischer, St. Louis, MO
12750	K2XU	Edward LaMunion, Sr., Utica, NY
16363	W4PNL	Joseph N. Whitten, Anderson, SC
16963	W9ZZM	William H. Warren, Rhinelander, WI
17834	W1LMO	Linwood M. Pattee, Northport, ME
18259	W2RQH	George M. Starkey, Central Square, NY
18892	W5KIA	Howard D. Clark, El Paso, TX
19319	WD4IBD	Rodney Glover, Leesburg, GA
20144	K2KOG	Robert I. Mayhew, Glens Falls, NY
20263	W7YIO	Frank M. Bosch, Woodland, WA
24596	W3SUA	A. Ray Goode, Ocala, FL
26678	W5QLD	Grady Lewis, Corpus Christi, TX
28104	KA1FP	Haret Majmudar, Worchester, MA
28323	N4XV	James F. Jones, Lake Placid, NY
33286	N4DQB	Allen H. Farr, Fort Walton Beach, FL
34172	W0GOR	Robert B. Donaldson, Montrose, CO
34862	WA2UGE	Ralph P. Young, Rochester, NY
35054	VE3LSF	Don Featherston, London, ONT
35922	VE5EH	Ernie Hedley, Saskatoon, SASK
36505	W8SLW	Chester P. Rempinski, Detroit, MI
37828	ZL1AWU	Charles A. Rouse, Auckland, NZ
38064	NK5Q	Leslie C. Miller, San Antonio, TX
38407	VO1BJ	Andrew A. Burden, Grand Falls, NFLD
39686	WL7BJB	Erlon (Gus) Gratix, Anchorage, AK
40341	WA2JWE	Bishop A. Buckley, Three Rivers, MI
44665	WA6KNR	Kenneth R. Knapp, W. Covina, CA
45220	K1BUI	Anthony C. Vena, Stratford, CT
45753	KE6IT	Ronald A. Baker, Jr., Novato, CA
46026	N0JAJ	Charles T. Shelton (Tom), Fountain, CO
47293	KB0BUH	Dane Joe Schulmeister, Delwein, IA
49462	WD6BCL	Richard H. Gray, N. Highlands, CA
50970	N6LOK	M. E. Kelley, Fresno, CA
54641	N7NXW	David Rapp, Blachly, OR

Please send all Silent Keys listings and corrections to:

Grace Dunlap K5MRU
Box 445
La Feria, TX 78559

MEMBERSHIP

Work 10 members. LOG each 10-10 number, call sign, operator's name and location. Send list to your numeric call sign or DX area manager, with \$5.00 U.S new member registration fee. \$6.00 (foreign). Life and family memberships are available. See order form on page 31. You will be issued a certificate of membership as well as a permanent 10-10 number. You will receive the 10-10 International Net news publication mailed regularly to all full members.

AWARDS

To apply for ANY of the 10-10 awards listed below, proof of paid-up membership is MANDATORY. A copy of your membership card or the address label from your copy of the 10-10 News must be sent with the award application.

BARS AND PLAQUES

Work 10-10 members with on the air 2 way communication, exchange numbers etc. Only 200 numbers per list may be submitted.

1. List numbers in numerical order, call sign of station worked, operator's name and location (QTH).
2. Submit only one list at a time. With the 500 BAR you are issued a VP #.
3. Include YOUR name, CALL, 10-10 number and state which 100 bar you are requesting.
4. Enclose with your list a 4X9" envelope self addressed and stamped with enough U.S. postage to return to you, if wanted.
5. 10-10 Bar applications Number 100 thru 900 are mailed to: Glen Harding, K7OMK PO Box # 133, Garden City, SD 57236. Bar applications Number 1000 and up as well as plaque applications are mailed to: Ed Neal, N5EBA, 1414 Hiawatha Ln., Burkburnett, TX 76345
6. A 500 bar certificate costs \$1. Plaques for working 1,000, 2,500, etc. cost \$5.00 U.S. currency postpaid.

COUNTIES AWARD

All contacts with 10-10 members on ten meters, exchange numbers etc. For complete rules, 10-10 COUNTY HUNTER Record book information application and Costs. Send SASE to: Award Manager: Alice Jenkins, NR4R, 1 Mitchel Lane, Rossville, GA 30741

INTERNATIONAL 500 OF THE WORLD

With the 500 BAR comes an Honorary VP number, membership in the International 500 of the world, and eligibility to go after the following two awards:

1. V.P. Certificate: For Members who work 100, 200, etc. other V.P. members. Normal number exchange with no restrictions. Submit list in numerical order, VP #, 10-10 #, Call, Name, date and QTH. Make a statement that all contacts were made over the air and not copied from a certificate list. Proof of paid-up Membership. Send to: Hiram E. Wolf, W4NWP, 126 W. 37th St., Riviera Beach, Fl 33404.
2. Lucky 13 Certificate: Work 13 different V.P. members. Each contact MUST be in a different 100 kHz segment between 28.5 and 29.7 MHz. Forms and rules are available from Glen Harding, K7OMK, PO BOX 133, Garden City, SD 57236

WORKED ALL STATES (WAS)

Work and get QSL confirmation from one 10-10 member in each of the 50 states. For complete rules, application form and cost send a 4" X 9" SASE to: Susan Brackeen, K1CAD, Rte 6 Box 151, Booneville, MS 38829.

COUNTRIES AWARD

QSL confirmation of QSOs with 25 or more 10-10 member countries. For complete rules, application form and cost send a 4" X 9" SASE to: Alan Sherman, K1AS, RR # 4, Box 422, Danielson, CT 06239.

WORKED ALL CONTINENTS

QSL confirmation of QSOs with a 10-10 member in each of the six continental areas. For detailed rules, application form and cost send a 4" X 9" SASE to: Chuck Imsande, W6YLJ, 18130 Bromley St. Tarzana, CA 91356.

OM/XYL AWARD

Work 10-10 Husband/Wife teams. See information in this issue of 10-10 News. For application Etc., Write to: Elaine Nickoloff, N8CBE, 5383 E. Atherton Rd., Burton, MI 48519.

10-10 INTERNATIONAL AREA MANAGERS

U.S.A.

1st. Call area	Al Kaiser	N1API	194 Glen Hills Rd.	Meriden, CT	06450
2nd. " "	Larry Berger	WA2SUH	9 Nancy Blvd.	Merrick, NY	11566
3rd. " "	Chester Gardner	N3GZE	9028 Overhill Dr.	Ellicott City, MD	21043
4. KY, TN, FL,					
VA, NC, SC,	Rick Roberts	N4KCC	7106 Ridgestone Dr.	Ooltewah, TN	37363
4. GA, AL, P.R.	Jim Beswick	W4YHF	112 Owl Town Farm	Ellijay, GA	30540
5th. Call area	Grace Dunlap	K5MRU	(Oct to June) BOX 445	LaFeria, TX	78559
5th. " "	Grace Dunlap	K5MRU	(June to OCT) BOX 13	Rand, CO	80473
6th. " "	Dick Rauscher	W6ANK	4371 Cambria Street	Fremont, CA	94538
7th. " "	Willie Madison	WB7VZI	10512 W. Butler Dr.	Peoria, AZ	85345
8th. " "	John Hugentober	N8FU	4441 Andreas Ave.	Cincinatti, OH	45211
9th. " "	Berniece Tielemann	N9CDO	11301 NA Darmstadt Rd	Lenzburg, IL	62255
10th CO, KS, MO, NE	Judy Long	WD0DHH	2681 Aster Street	Pueblo, CO	81005
10th IA, MN, ND, SD	Debbie Peterson	N0KQC	RR #1 BOX 35	Duncombe, IA	50532

DX, ALL COUNTRIES other than U.S.A.

Carol Hugentober, K8DHK 4441 Andreas Ave., Cincinatti, OH 45211 U.S.A.

ORDER FORM

NEW MEMBER, REGISTRATION FEE. One time only \$1.00 \$_____

ANNUAL DUES, USA MEMBERS. \$4.00 times number of years wanted. \$_____

ANNUAL DUES, FOREIGN MEMBERS. \$5.00 times number of years wanted. \$_____

** LIFE MEMBERSHIP, 25 times the ANNUAL DUES (\$100 or \$125) \$_____

Senior (65) Life Membership, (W/Proof) US \$35.00, Foreign \$40.00 \$_____

FAMILY MEMBERSHIP, add \$.50 each person each year \$_____

10-10 STAMPS, 100 stamps \$1.00 \$_____

-----> TOTAL DOLLARS ENCLOSED -----> \$_____

Renewal and New Members: Send dues to Call Area Manager listed above.

** SEND YOUR Life Membership and Scholarship donations directly to:
10-10, GERRY GROSS, WA6POZ, 643 N. 98th. #142, Omaha, NE 68114.

10-10 ROSTER Latest edition 4/89. \$7.50 USA, \$9.00 FOREIGN, Paid up members only.

MAIL TO: Dee Gilbert, KA6HQJ, PO BOX 503, MADERA, PA, 16661-0503 \$_____

Make all checks payable to 10-10 International Net, Inc. DO NOT send cash.
All applicants and DX members are reminded that Dollar amounts quoted are in U.S. Dollars. DX members pay by International Postal Money Order only.

NAME _____ CALL _____ 10-10 # _____

ADDRESS _____ CITY _____

STATE/COUNTRY _____ ZIP _____

PLEASE INCLUDE CALLS, NAMES AND NUMBERS FOR FAMILY MEMBERS. _____

10-10 International Convention
Arlington HAM-COM Expo Hall
Arlington, Texas

June 7, 8, 9, 1991

See You There!

Complete and tear off here. Attach to front of your contest log.

Cover Sheet

Spring 1991 CW Contest

Chapter Assignment: _____

Total contacts with 10X #: _____ X 2 = _____ Points
Total contacts without 10X #: _____ X 1 = _____ Points

Send Logs to:
Samuel Clemens Chapter
c/o Walt Dimmock, N1FNV
614 Old Post Road
Tolland, CT 06084

Total contacts

Total Points

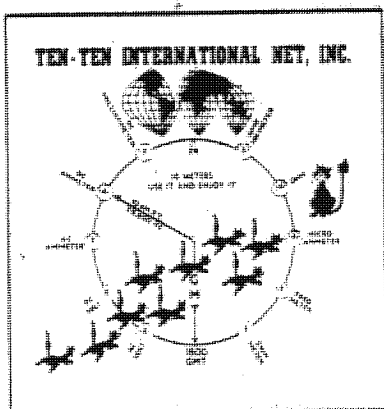
Logs must be postmarked no later than June 1, 1991

Include this cover sheet and the mailing label on it OR a cover sheet of your own (follow the format of this one) and a copy of your current Ten-Ten membership card as proof of Ten-Ten membership for awards.

Lee Pasewalk, WB8MGM (Rec. Mgr.)
18815 Yukon Ave.
Torrance, CA 90504

TIME TO RENEW? EXPIRATION DATE
IS ON MAILING LABEL BELOW.

BULK RATE
U.S. POSTAGE
PAID
PERMIT NO. 6
LONG BEACH, CA



TO:

01

Please send all address changes/corrections to the return address above.