



### January 1999 (Winter)

- IN THIS ISSUE -		
An-Ten-Ten-na's .....	8	
Awards Information .....	30	
Awards .....	22	
Chapter Coordinators Column ..	14	
Convention Info .....	28	
DX News .....	12	
Hill Country Picnic .....	20	
Member Information .....	31	
Morse Code Series .....	5	
Net News .....	21	
New Life Members .....	23	
Officers and Directors .....	2	
Operating 10 Meters p2 .....	17	
Postage Hike .....	3	
President's Message .....	3	
QSO Party Calendar .....	9	
QSO Party Cover Sheet .....	32	
		QSO Party Results .....
		24
		Reflections .....
		20
		Report to World Radio .....
		26
		Scholarship Applicant Info .....
		21
		Scholarship Honor Roll .....
		10
		Silent Keys .....
		27
		Springbok Changes .....
		29
		W6OI #109 on the air .....
		21
		WHY's Words .....
		4

## OFFICERS AND DIRECTORS

**President**.....Tom Henderson, K4CIH #33233  
 4901 15th Place E., Tuscaloosa, AL 35404-4522  
**Vice President**.....Chuck Imsande, W6YLJ #19636  
 20815 Desert Sands Dr., Sun City West, AZ 85375-5446  
**Secretary**.....Dave Prichard, KA5OVO #37297  
 16314 Thunderbay Dr., Houston, TX 77062-5111  
**Treasurer**.....Keith Schlottman, K17RK #63324  
 9581 E. Calle Cascada, Tucson, AZ 85715-5819  
**Director**.....Larry Berger, WA2SUH # 407  
 9 Nancy Blvd., Merrick, NY 11566-3119  
**Director**.....Mike Elliott, KF7ZQ #54625  
 9832 W. Gurdon Ct, Boise, ID 83704  
**Director**.....Jerry Heien, N9AVY #43313  
 PO Box 190, Cary, IL 60013-0190  
**Director**.....Rex Holford, K0NO #20423  
 916 McKenzie Ave., Council Bluffs, IA 51503-1028  
**Director**.....Tom Michaelson, N0MT #55241  
 901 Starview Ln., Lincoln, NE 68512  
**Director**.....Bob Peschka, K7QXG #5956  
 2580 SW 195th Ave., Aloha, OR 97006-2700  
**Director**.....Ed Redwine, K5ERJ #11843  
 9 Yellowrose Lane, Augusta, KS 67010-2230  
**Director**.....Dick Russell, K6SSD #62500  
 10537 Peacock Cr., Midwest City, OK 73130  
**Director**.....Bob Ryan, K6YVG #18022  
 26409 Doveweed Way, Saugus, CA 91350-2647  
**Director**.....Joe Williams, WA9TSG #310  
 PO Box 93181, Milwaukee, WI 53203-0181

## NET OFFICIALS

**Award/Cert. Guide Mgr**.....Brad Kimble, WA4KUP #55192  
 3855 66th St. E., Inver Grove Heights, MN 55076-2222  
**Chapter Coordinator**.....Dave Smith, K6RDK #65812  
 1349 Vernon Terr., San Mateo, CA 94402-3331  
**QSO Party Manager**.....Don Ward, W0RTV #13962  
 4514 Ferrer Drive, St. Louis, MO 63129  
**Editor**.....Steve Rasmussen, KBØWHY #68684  
 312 N 6th Street, Plattsmouth, NE 68048  
**PR Manager**.....Chuck Imsande, W6YLJ #19636  
 20815 Desert Sands Drive, Sun City West, AZ 85375-5443  
**Historian**.....Morrie Goldman, W6EHM #4189  
 21518 Marjorie Ave., Torrance, CA 90503-6418  
**Information Manager**.....Jeff Ritter, N5VAV# 59692  
 6959 Hovenkamp, Richland Hills, TX 76118  
**Internet Coordinator**.....L.B. Cebik, W4RNL #41159  
 1434 High Mesa Drive, Knoxville, TN 37938-4443  
**Net Manager**.....Bill Marple, AA6ZW #62075  
 21045 Castle Rock Rd., Yorba Linda, CA 92886-6933  
**Scholarship Manager**.....Morrie Goldman, W6EHM #4189  
 21518 Marjorie Ave., Torrance, CA 90503-6814  
**SK Manager**.....Grace Dunlap, K5MRU #218  
 PO Box 445, La Feria, TX 78559-0445  
**Supplies**.....10-10 International Net, Inc.  
 643 N. 98th Street #142, Omaha, NE 68114-2342

**AWARD MANAGERS**.....Listed on page 30

**MEMBERSHIP INFORMATION**.....Listed on page 31

# 10-10 INTERNATIONAL NEWS

PRINTED IN THE U.S.A.

EDITOR

Steve Rasmussen, KBØWHY #68684  
 312 N 6th Street, Plattsmouth, NE 68048  
 Phone: 402-296-4434 Email: sr54936@navix.net

The 10-10 International News is published four times annually  
 by the TEN-TEN INTERNATIONAL NET, INC. Publication dates  
 are approximately mid January, April, July and October.

DEADLINE FOR NEXT ISSUE

March 1, 1999

Each paid-up member receives a copy. This is an independ-  
 ent publication. Permission to reprint is hereby granted, providing  
 suitable credit is shown.

News items should be sent to the Editor. Technical articles  
 and information on all 10-meter activities or news are welcome and  
 solicited. All copy submitted must be typed, sent on computer disk  
 or via E-mail. Suitable formats will be provided upon request.

Photographs are encouraged. Black and White or Color are  
 acceptable. Include complete information on the back of each  
 photo. Attach a label or other suitable paper to the back of the photo  
 and write all information on the label, not the photo.

10-10 Chapter activities and reports should be sent to the  
 Chapter Coordinator, Dave Smith, K6RDK #65812, 1349 Vernon  
 Terrace, San Mateo, CA 94402-3331.



Member:  
 AMATEUR RADIO  
 NEWS SERVICE

## 10-10 NET CONTROL STATIONS

ALL NETS BEGIN AT 1800Z

Monday (28.380).....Dick, K6PZE #1341  
 Monday (28.800)....Harold "Scotty" Scott, WA6TQC #71  
 Tuesday (28.380).....Russ, N5EJS #1525  
 Tuesday (28.800).....Don, KB6QLC #42822  
 Wednesday (28.380).....Christine, N7PVL #58018  
 Wednesday (28.800).....Louise, N6ELK #36654  
 Thursday (28.380).....Bill, AA6ZW #62075  
 Thursday (28.800).....Carl, NU6V # 67317  
 Friday (28.380).....Jimmy, AE4NA #66957  
 Friday (28.800).....Robert, KQ4PK #63201  
 Saturday (28.380).....Ed, KC4RIY #58203  
 Saturday (28.800).....Dirk, VP2VF #63440  
 Sunday....."NEVER ON SUNDAY"

# President's Message

Tom Henderson  
KC4IH #33233



December already and the Christmas shoppers are starting to clutter up the malls. I hope all had an enjoyable Thanksgiving with family and friends. I spoke with a few members via 10-meters on this day and was happy to see the band was somewhat open. Band openings to DX have been getting better and better and increases in propagation are hopeful as the New Year opens. I have been able to check into the GB-10 net twice now and many thanks to Dave, G4KHF who runs a fine net.

My first order of business is to thank KJ4FM Linda Barnes for her interim period as our Editor, and to welcome KB0WHY Steve Rasmussen as our new editor. We are looking forward to new and innovative changes in the News. Thanks is also in order for the writers and volunteers that helped make this a smooth transition.

The second order of business is to address a few complaints concerning upgrading and Chapters. Ten-Ten does not control Chapters and is not responsible for how chapters run their programs. However, those Chapters who wish affiliation and the use of reference to 10-10 International in their materials, do have responsibilities to the membership and the organization. There are requirements the Chapters must meet to become affiliated. Once the application is sent to 10-10 a committee reviews it and if all meets the requirements, the Chapter becomes affiliated.

Now, what does this mean? Simply it means that the Chapter has met the requirements to be affiliated. Ten-Ten will assist with any problems you may have with the affiliated Chapter, such as returns of upgrades, inability to contact the Chapter and other problems. Keep in mind that we still do not control the Chapter and can only remove affiliation if the requirements of affiliation are not being met.

If you have problems corresponding with the Chapter and have exhausted all efforts to rectify a problem, the 10-10 Chapter Coordinator needs to be informed of the efforts you have made. DO NOT contact him until you have made substantial effort on your part. Once you have done your part with no response, the Chapter Coordinator will write a letter to the Chapter Head/Certificate Manager and try to straighten out the problem. This is not an overnight fix and patience must

prevail. Please remember that the CM's are volunteers for the associated Chapters and they too have responsibilities other than 10-10 and the chapter. Most CM's I am acquainted with do all they can to turn around upgrades and tend to Chapter business.

Congratulations to the winners of the Sprint and CW QSO Parties. There appears to be more and more members taking part in this social event and it is good to see more DX participation. I wish to thank Don Ward for his work as QSO Party Manager and his efforts obtaining scoring chapters, and add super thanks to those who have volunteered to score these QSO Parties. This is not an easy task and involves a good bit of time and effort. QSO Parties appear to be running well and our QSO Party Committee has generated a proposal for possibly having electronic scoring available in the future. This proposal is now before the Board of Directors and will be further addressed at the annual meeting in June. I also add my thanks to the Committee for their work and do appreciate the time and effort in service to 10-10.

In January I will be taking pre-registrations for the 1999 convention. Jim Whittlesey, KC4RHW has been hard at work preparing the convention and I am looking forward to June. I would like to point out the necessity for pre-registration. It is necessary to plan the banquet and other functions. Knowing the approximate numbers coming sure does make it easier on the planners. More information concerning the convention is in the News. Have a good New Year and we'll see you in Oak Ridge.

---

## US Postage hike raises QSL costs

QSLing reminders: Effective January 1, 1999, the ARRL Outgoing QSL Service fee increases to \$6 per pound (or portion thereof). Other fees remain unchanged. It still costs \$1 for 10 cards, \$2 for 20 cards and \$3 for 30 cards, etc. Also, effective January 1, 1999, US first-class postage increases to 33 cents. Remember to send your Incoming QSL Bureau extra postage if you have envelopes on file bearing a 32-cent stamp. Also, include an address label or clearly print your return address on envelopes submitted to your Incoming QSL Bureau. Some Bureau Managers are receiving envelopes with no return address.

Information sheets on the ARRL QSL Service are available from ARRL HQ. Send an e-mail request to [buro@arrl.org](mailto:buro@arrl.org) or send an SASE to QSL Service, ARRL, 225 Main St, Newington, CT, 06111.--Martin Cook, N1FOC

(ARRL Letter - Vol 17 No 44 - Nov 6, 1998)

# WHY's Words

**Comments from the Editor's Desk**  
by Steve Rasmussen – KBØWHY #68684

Well, here it is. My first edition of the News. I hope you all like it so far. There will be a lot more in the way of improvements by the time the next News goes to print that I did not have time to do in this edition. I started this edition pretty much from scratch, not only because I had to, but because I needed to really see all the stuff that goes in and figure out the best place to put it all! I did use quite a bit of the formatting of the last edition, and those will be revamped a bit as time goes along, but most of it is fresh.

Oh! I didn't introduce myself yet! I'm sorry. My name is Steve Rasmussen and I am the new Editor of the 10-10 International News. I have quite a long background in computer graphics work and in the printing industry. At one time I was the youngest Linotype operator in Portland, Oregon. I guess that must date me pretty much. I am 49 years young and currently living in a small town of 6900 people near Omaha, Nebraska called Plattsmouth. I have a very nice XYL who goes by the name of Sandy and who has her own call sign of KCØBDV. There are also the 5 kids and 4 grandkids to make a well-rounded family.

While on vacation during Thanksgiving this year, we had the opportunity to visit one of the Directors of 10-10 in Aloha, Oregon. His wife took a picture of us and he wrote something to go with it for publication. You can see it at the end of this article.

I was trained in several area of the graphic arts industry BC (before computers) and when computer technology started becoming a lot more affordable, I started learning everything I could about them. I started with a TI99-4A and upgraded to a Commodore 64 a year later. I used to design animated graphics for Halloween and put a monitor in my window and run them for all the trick-or-treaters.

I got interested in desktop publishing about that time and put my C64 to good use designing church bulletins and Christmas cards. I did my next upgrade several years later to a 286 which did not last more than a year and I had a 386. That was about 5 years ago. I now am operating a Pentium 100 and it is all I really need at this time. I use MS Publisher and Office 97 Professional for creating the News. I also have Textbridge for scanning in documents so I don't have to hand type everything in (*that would be a nightmare*). My next computer will be one I build myself so I will know just exactly what I have and be able to do my own

upgrades, as necessary.

My goal is to turn the 10-10 News into a well made and respected publication. Just a few days ago I met with the management of the printing company that prints the 10-10 News and we discussed what was needed to properly format this product and have it ready for printing with the least amount of difficulty, for the best product available. We have discussed changing the paper stock to a whiter paper, however due to the increased costs, that is in the hands of the officers of 10-10 that are responsible for the publishing itself. We have discussed the options of adding one color to at least a portion of the News and, I am happy to say, we will be further exploring those options since there is no additional cost to do so. As a result, the location and format of some of the articles in the News will be changing to coincide with those options.

This publication was created in about 20 days (cut short 10 days due to my vacation and the holidays) and since there was no lead time before this all began to figure out the layout and design of the News, I had to use much of the formatting from the last issue. This will slowly be adapted to a format that will be more friendly to the reader.

If this all seems like a lot of work to you – it is! However hard it is, the end result will be something that 10-10 should be proud of! As it was mandated to me by one Director – he wanted me to put out a publication what would “knock their socks off”!!! I have set my goal to one year (4 issues) for just that purpose. By this time next year, we should have just that! A publication that we can show off and be proud of.



New 10-10 Editor, Steve, KBØWHY, and his xyl Sandy, KCØBDV, traveled from Nebraska to Portland, Oregon to visit with family over the Thanksgiving holiday. While there, they visited with K7QXG, Bob, at his home in Aloha, Oregon. Steve even took a crack at operating Bob's station on 28.345, which created quite a pileup. After lunch was served by Bob's xyl Shirley, good-byes were said and Steve and Sandy returned to Portland. Photo by Shirley

# The International Morse Code

A SERIES BY MARTIN REID N6QU

## "Taking The Plunge – Part II"

Are you a newly licensed ham considering "getting your feet wet" in operating the International Morse Code? Thinking about upgrading and wonder about the best way to learn CW? Or, maybe you're just wondering what all the fuss over the code is about. Well, if so, this article is intended for you...

Our discussion of learning the International Morse Code continues, with this, our seventh in a series; more information for those "taking the plunge"...

In our last installment, we started off with a "CQ" call. In this installment, some pointers on establishing contact. Then we'll give you some pointers on keeping the QSO running smoothly and offer some short cuts to do this.

### Calling "CQ"

First, let's assume you've called CQ. Your call went something like this:

"CQ CQ CQ DE KC7ABC KC7ABC K"

...and sure enough... there's a station answering you! He or she sends your call, once and their call twice:

"KC7ABC DE N6XYZ N6XYZ AR"

There's a good reason for this. You already know your call sign! You, on the other hand, don't know their call sign. You may have difficulty in copying it the first time. So, as a courtesy, the answering station tries to make it easy. When it's your turn to answer another station's "CQ", please keep that in mind.

Incidentally, the prosign "AR", sent at the end of the answering station's transmission, means "end of transmission", after calling a specific station, and is the equivalent of "over" in phone operation. This prosign is sent by the responding station, before contact is established.

AR, and other "prosigns" or CW shortcuts, are sent as one continuous character. They are normally indicated by a line over the top of the two or three letters.

Later, after contact has been established between the two stations, each operator will end their respective transmissions with identification and then "KN", or "go ahead a specific station" (with whom I'm talking to).

Continuing the example above:

"KC7ABC DE N6XYZ KN"

Believe it or not, some stations may just hear N6XYZ and "K" and think they've caught the end of a "CQ" and will start answering. So, adding this bit of "extra information" will help avoid confusion.

Remember our discussion of wide and narrow filters on ham transceivers? Now that a station is responding to your "CQ", this is the perfect time to put a narrow "CW" filter to work - before you need it. You see, a station is calling you, and likely there is little QRM (man made interference) on frequency. This may change during the course of your QSO. So, while the other station is calling you, after you have correctly noted the callsign of the station calling, switch the IF filter on your transceiver from "wide" to "narrow", to insure that the calling station is within the "passband" or "window" of your transceiver's IF filter. If interference does appear on frequency, your narrow filter can be put to work quickly, and without any interruption to your QSO.

If the station calling you is NOT within the passband or "window" of your IF filter, DO NOT adjust your transceiver's main frequency dial. The station calling you has tuned his transceiver to your signal. Moving your transceiver's main dial will change your frequency. Likely, the calling station will then re-adjust his frequency, causing the same "out of passband" problem with his signal. Instead, if your transceiver has a "RIT" or "Receiver Incremental Tuning" adjustment, move this adjustment slightly to move the calling station into your receiver's passband. RIT adjusts only the receiver on your radio, and not the transmitter.

To the reader, this process may seem complicated. However, in real life, and with just a bit of practice, you will quickly become familiar with these adjustments.

(Continued on page 6)

## The International Morse Code

(Continued from page 5)

Getting back to that station calling you, he or she may appear to be from a different call sign district. Call signs are a general indicator of where the answering station is located, but today, anything goes. KL7's spend the winters in Arizona and W3's vacation in Hawaii with their ham rigs.

So expect the unexpected QTH, or location, until you learn the QTH.

The small pleasantries of human relations help to keep the world "going around". These small things, like a smile or a pleasant tone of voice can make a conversation or interaction so much more pleasurable. And just as every day conversation has its pleasantries, you will find that many SW QSO's also have these same niceties. For example, a station has responded to an operator's calls of "CQ". The station who's call was answered will answer the sending station with something like this:

"KC7ABC DE N6XYZ N6XYZ TNX FER CALL OM"

or

"TU FER CALL OM"

Meaning "thank you" for answering my "CQ", "Old Man" - a ham term of endearment. Another example:

"KC7ABC DE N6XYZ N6XYZ R ES TNX FER CALL BT"

The "R" means "Roger" or, I've copied your transmission correctly. The operator then says "thank you for the call".

### Break In Text

The BT represents a "break" or separation in text and is sent by some operators after each complete paragraph or "thought". Some operators also use ST to "stall" for time when they can't think of what to say. For example:

"KC7ABC DE N6XYZ R R ES TNX FER CALL  
BT BT BT BT BT BT BT"

Seriously, BT should only be used sparingly, used to separate changes in thought or new paragraphs of text.

## The Heart of a QSO

Every CW QSO has three essential elements for a verifiable, two way contact. These are: 1.) Signal report or "RST" 2.) Location or "QTH" and 3.) The operator's name. For example, the operator who's call was answered would send; first a "thank you" for the call; second, the "RST" value of the responding station; third, the "QTH" and last the operator's first name. Let's briefly review each element:

1.) Signal report. Important, as it tells the other operator how his signal is being received and if repetition is needed in sending any of the first three elements in the initial exchange. Sent as follows:

"UR RST RST 579 579 BT"

You would substitute the readability, signal strength and tone for the received signal for the values in the example - "579"

A list of "readability" and "signal strength" values follow:

### Readability

"Value"	Meaning
1	Unreadable
2	Barely readable
3	Readable with considerable difficulty
4	Fair signals
5	Perfectly readable

### Signal Strength

"Value"	Meaning
1	Faint signals, barely perceptible
2	Very weak signals
3	Weak signals
4	Fair signals
5	Fairly good signals
6	Good signals
7	Moderately strong signals
8	Strong signals
9	Extremely strong signals

Assigning exact values for readability and signal strength for the signal you are copying isn't nearly as important as a good grasp of the concept of a particular RST value and what it means. For example, two operators may copy a weak signal. One operator may assign a signal strength value of "4" or "fair signal", while the other operator may assign a "3" or "weak signal" value.

(Continued on page 7)

# The International Morse Code

(Continued from page 6)

Agreement on the exact value isn't nearly as important as knowing the signal isn't "moderately strong" or "strong" and isn't so weak as to be "very weak" or "faint". With practice and experience, the RST values become more meaningful and easier to assign.

## Tone

In these days of commercially manufactured transceivers, the beginning CW operator will likely not encounter many stations with less than perfect tone, or a "Tone" value of less than "9". Exceptions may include signals from U.S. or foreign operators who "homebrew", or construct their own transmitters in the fine tradition of Amateur Radio. Since these operators rely on the honest RST reports of other amateurs, any radio amateur interested in CW operation is encouraged to review the complete meanings of Tone ratings in the RST System. One good source is the "ARRL Handbook", published by the American Radio Relay League.

2.) Location. Since this is one of the most important elements of the contact, this information should also be repeated. For example:

"QTH IS LAS VEGAS, NV IMI LAS VEGAS, NV"

You may send the city and state together and repeat this sequence, or you may hear operators sending the city twice and then the state twice. As the saying goes... "variety is the spice of life".

3.) Name. For very personal reasons, it is important that the other operator copy this information correctly. Dale Carnegie once wrote that the sweetest words any person can hope to hear is the sound of their own name. In other words, a person's name is important to them. So, you will hear operators sending their name twice, so that you are sure to copy it correctly. For example:

"NAME NAME IS CHARLIE IMI CHARLIE BT"

Sending "NAME" twice is optional. It might be advisable under very poor conditions, in order to prepare the other operator for something important coming up. However, by sticking to a universally followed format, the other operator can anticipate what is going to come up next and will copy, even with "tough copy".

So take care and try to copy the name correctly. And if you don't, be honest and simply ask "name?" or add "QRM" (man made interference), "QRN" (natural interference), "QSB" (atmospheric signal fading) and then add "name?". From this, the operator will know you have missed his name because of interference or fading signals and will gladly oblige you by sending it again.

*And now for something completely different...*

## "Society For The Preservation Of Roger"

Think we'll call it "SPR" for short. There is great value in being able to tell another station that you've copied everything he's sent you, correctly, in one letter. This letter is the letter "R". Used sparingly in a QSO, it's presence or absence can tell another operator much about conditions and whether what was said was actually received. For example, if you copied everything stated in a transmission, your first comments to another station to whom you are speaking might start out:

"N6XYZ DE KC7ABC R FB ES TNX FER NICE WORDS BT"

This statement has told N6XYZ that the transmission he just sent was received completely ("R"), the other operator approved of the contents ("FB" or "Fine Business") and the operator said "thank you for a compliment or other nice comment" ("TNX FER NICE WORDS"). On the other hand,

"KC7ABC DE N6XYZ R R R SRI OM MISSED UR QTH BT"

This statement tells KC7ABC that the sending operator is somewhat inexperienced or has suffered a brief mental lapse, because after telling her he copied everything "R R R", he goes on to say sorry old man, I didn't copy your QTH."

So, if you remember or use one CW prosign, please make it "Roger" or "R". And while you're at it, please be careful how it's used.

In our next installment, we'll continue our CW QSO with a discussion of what follows the initial exchange, once contact has been established with another station. Stay tuned.

*Next Month: The International Morse Code, A Series "Taking the Plunge, Part III"*

# An-Ten-Ten-nas

**L. B. Cebik**  
**W4RNL**  
**# 41159**



In each issue of the *News*, we shall try to clarify a significant cluster of ideas used in antenna work. Our object is to help you make the best decisions about the antennas you buy or build without imposing our own prejudices on you. The more you understand, the better your choices will be.

## No. 22:

### The Handy Quarter-Wave Matching Section

In the quad project we looked at last time, we specified the use of a 1/4 wavelength matching section of 70- to 75-ohm coax between the antenna feedpoint and the 50-ohm coax run to the shack. Let's find out why we needed it and how the matching section does its work. These types of matching sections are handy and easy to make, so you may find them useful in future antenna projects.

**The Raw vs. the Matched Antenna:** Let's start by comparing the feedpoint impedance of our quad both with and without the matching section. The figures are based on a quad beam that is self-resonant just below 28.25 MHz. The 1/4 wavelength section of 75-ohm, 0.66 velocity factor coax was cut for 28.5 MHz and turned out to be 68.3" long. All SWR figures are relative to 50 ohms.

Frequency in MHz	Without matching section		With matching section	
	Feed Z	SWR	Feed Z	SWR
	(R+/-jX)		(R+/-jX)	
28.00	70.6 - j29.2	1.81	66.9 + j27.1	1.73
28.25	96.8 + j3.4	1.94	58.1 - j2.7	1.17
28.50	125.1 + j25.9	2.63	43.1 - j9.1	1.28
28.75	150.1 + j39.4	3.23	34.9 - j8.5	1.51
29.00	168.6 + j47.7	3.67	30.7 - j7.1	1.68
29.25	180.8 + j54.8	3.97	28.2 - j6.0	1.81
29.50	188.2 + j63.1	4.22	26.6 - j5.4	1.91
29.75	192.6 + j73.6	4.45	25.1 - j5.2	2.02

Without the matching section, the SWR figures for the quad are high enough that the automatic shut down feature of most current solid state rigs would reduce rig output to almost nothing. With the matching section, the SWR figures within 10 meters permit normal operation.

As the unmatched impedances go up, the matched impedances go down. This gives us a clue to how the matching section operates. Every length of coax of any characteristic impedance ( $Z_0$ ) is an impedance transformer. For odd lengths, the transformation is complex. However, when a length of coax is exactly 1/4 wavelength long at a given frequency, the transformation is simple, especially if the impedance to be transformed is wholly resistive. We can use a calculator to handle this equation:

$$Z_{\text{matched}} = Z_0^2 / Z_{\text{antenna}}$$

This little formula is only approximate in the real world. For example, with the quad, there is a reactive part of the antenna feedpoint impedance in every line of the table. Moreover, the matching section is only an exact 1/4 wavelength at 28.5 MHz and nowhere else. However, if the reactances are not too high and the frequency span is not too great, the simple equation makes a good approximation. As we look at the table, for a single ham band and for reactance values less than half the resistive values, the simple equation works well enough for antenna building.

Remember that for purely resistive impedances, a 2:1 50-ohm SWR accommodates an impedance range of 25 to 100 ohms. This resistive range shrinks when we combine reactances with resistance. However, note the 4:1 range of impedance that these SWR limits can handle. (Also remember that the 2:1 ratio is somewhat arbitrary as a set of limits. Its chief effect is noted by automated power reduction circuits in transceivers. Apart from this, there would be little difference in radiated power between, say, SWRs of 1.8 and 2.5.)

With a 1/4 wavelength 75-ohm matching section, again in purely resistive terms, we can take antenna feedpoint impedances between just above 56 ohms up to 225 ohms and transform them to values that fit the 50-ohm 2:1 SWR limits—again, a 4:1 range. Notice that our quad does not reach 225 ohms when the matched SWR exceeds 2:1, but notice also that there is considerable reactance that accompanies the resistive value at 29.75 MHz.

Likewise, at 28 MHz, we would expect the antenna impedance of 70.6 ohms to yield about an 80-ohm figure instead of the 66.9-ohm figure that actually emerges. However, not only do we have reactance at the antenna feedpoint, but as well, the matching section is shorter than 1/4 wavelength at this frequency. Hence, the impedance does not undergo a full quarter wavelength transformation. (Likewise, above 28.5 MHz, the impedance undergoes more than a 1/4 wavelength transformation.)

These are the finer points of using a 1/4 wavelength matching section that affect the matching range by just a little bit and throw the actual impedances somewhat off the calculated results from the simple formula. But the simple formula works well enough for most ham antennas.

(Continued on page 9)



## An-Ten-Ten-nas

(Continued from page 8)

To be on the safe side, if you have a range of antenna feedpoint impedances from about 80 to 200 ohms, then a 1/4 wavelength section of 75-ohm coax will transform them to values appropriate to a 50-ohm feedline and transceiver system.

**Other Applications:** 50-ohm and 75-ohm coax cables are the ones most easily obtained by hams, even though other values are available from manufacturers. However, this fact does not limit us to matching only values above 50-ohms to our 50-ohm system. If you cut 2 lengths of 75-ohm cable to 1/4 wavelength and connect them in parallel (center conductor to center conductor and braid to braid at both ends), you have a 37.5-ohm cable. If we plug this value into the simple equation, we find that we can match impedances values below 50-ohms up to values within the 2:1 50-ohm SWR limits. This is useful for Yagis and other antennas that often have feedpoint impedances in the 20-35 ohm range. The double line can be a bit bulky, but that is about its only significant disadvantage over other matching methods.

Consider another situation: At certain wire antenna heights below 1/2 wavelength, the feedpoint impedance of a dipole is not 70 ohms, but more like 80-95 ohms. The 75-ohm matching section would transform these values to a 70-60 ohm range. However, we can broaden the range over which these values apply by first running a section of 50-ohm cable that is 1/2 wavelength long or a multiple of 1/2 wavelength (allowing, of course, for the cables velocity factor). Cut the 50-ohm cable for a frequency at the band center, such as 7.15 MHz for a 40-meter dipole. Since the cable is short at the low end of the band, the impedance will be higher than at the antenna at the same frequency. Equally, since the cable is long at the high end of the band, the impedance will also be higher than at the antenna terminals. The result will be band edge values closer to 100-120 ohms.

Now, if we plug in our 1/4 wavelength 75-ohm matching section, we have lower SWR values across the band than we would have by placing the 75-ohm matching section at the antenna terminals. In fact, such a system can, with some dipole heights on 80 meters, cover more than 4/5 of the band with under 2:1 SWR.

75-ohm quarter wavelength matching sections (and derivatives) make up a quite flexible array of methods for adapting 50-ohm transmission line to antennas that do not present 50-ohms at their feedpoint terminals. However, they do have some major limitations. Because a length of coax is 1/4 wavelength long at only one frequency, this technique is for monoband antennas only. If you have a multiband antenna, you will have to use some other method of matching your 50-ohm coax/transceiver

system to the antenna.

Likewise, the transformations become far more complex the higher the reactance at the antenna feedpoint. Hence, the quarter wavelength matching system is also only for low-reactance matching situations, such as the one shown in the table for the quad. If you have higher reactances, you may need a different matching system.

But where the 1/4 wavelength matching section is suited to the task, it is simple, inexpensive, low-loss, and effective. Those are pretty good credentials.

## 1999 10-10 QSO PARTY CALENDAR

### WINTER PHONE.....Feb 6-7

*Postmark Date – Feb 23*

Scored by the Golden Bear Chapter  
c/o Ralph Fontaine KD4GW  
3880 Walnut Drive  
Rescue, CA 95672-9316

### SPRING CW.....May 1-2

*Postmark Date – May 17*

Scored by the Gateway Chapter  
c/o Don Ward W0RTV  
4514 Ferrer Dr.  
St. Louis, MO 63129-3741

### SUMMER PHONE.....Aug 7-8

*Postmark Date – Aug 23*

Scoring Chapter TBA

### DAY SPRINT.....Oct 10

*Postmark Date – Oct 25*

Scored by the Gateway Chapter  
c/o Don Ward W0RTV  
4514 Ferrer Dr.  
St. Louis, MO 63129-3741

### FALL CW.....Oct 30-31

*Postmark Date – Nov 15*

Scored by the Gateway Chapter  
c/o Don Ward W0RTV  
4514 Ferrer Dr.  
St. Louis, MO 63129-3741

**All 10-10 QSO parties begin at 0001 UTC on the first listed date and close at 2400 UTC on the second listed date. The 10-10 Day Sprint is, of course, a one day contest.**

# HONOR ROLL SCHOLARSHIP FUND VOLUNTEERS

by Morrie Goldman W6EHM #4189

The Life Members' response to the 1998 appeal by our President Tom Henderson, K4CIH #33233, and Vice President Chuck Imsande, W6YLJ #19636, has been gratifying. These Life Member Scholarship Fund Volunteers have been very generous and the amount donated will fund three of the four 10-10 Scholarships to be awarded in 1999.

00218 K5MRU Grace Dunlap  
 00296 W6MXT Francis E. Levy  
 00362 W7COK Ralph E. Sims  
 00779 WA5UYL Michael Krichick  
 01121 W6VIF W.S. Chapman  
 01522 NX5T Preston J. Gauthier  
 01960 K4HFL Arthur C. Pfister  
 02225 K1WQU Alfred L. Pulling  
 02852 W1VGY Richard S. Bird  
 03159 WA8OXS Robert Nickel  
 04541 K0JPW Donald A. Weaver  
 04556 HI8LLS Larry Street  
 05492 WA2NBG Ray Mustafa  
 05723 K4HTU Robert W. Lucas  
 06090 WB2SJQ Marvin Hagan  
 06254 W6ETD James C. Bollinger  
 07363 WA8MJY Ronald H. Gruninger  
 08402 WA5FOE Richard E. "Dick" Spies  
 08838 KB6UW Thurman Laubhan  
 08906 W7COJ Lois B. Sims  
 09891 W0OV Carl L. Cain  
 13263 K4JO Ellicott Valentine  
 13977 K0MYD Alfred N. Siegel  
 14010 W0ULK Ted Riemann  
 14308 WB0VHE Bernie Caton  
 14889 WB9TRJ Roland J. Armani  
 17800 W1MXI Robert D. Young  
 19636 W6YLJ Chuck Imsande  
 19753 WA6HYO Richard H. Lund  
 19785 WA6KCU Kirby "Andy" Anderson  
 20651 NL7D Tim Michael  
 21560 K2XF Seymour Miller  
 22761 AG1F Albert W. Hamilton  
 23693 WD5EDR William E. Heberling  
 24423 AK7H Edward C. Saffich  
 25057 NC6V Dick Corlew  
 25645 WA6PAC Chester T. Rice  
 26001 WB1DBZ Emile H. Montplaisir  
 26527 KE2AG David C. Marden, Sr.  
 28290 AF0Z Jim Kassel  
 29469 KC4RUF Thomas C. Rac  
 29601 WA1ZIC Fred Covell

30405 WD8MQJ Ed Crowthers  
 30439 K4CEO Maurice L. Schietecatte  
 31022 WA5BBR James F. Williams  
 31135 K9DHC Arthur R. Tait  
 31163 KB9YY John L. Biester  
 31424 KC7NY Ken Campbell  
 31623 K6VMN Mac Shroyer  
 32557 KD9XP Edward W. Ruehrwein  
 34818 AB4WU John W. Nutter  
 34849 W2DG Lloyd F. Cook  
 35877 N5DAS Ray Dobson  
 36312 NV2J Tony Volino  
 36607 W6ZZN Ed Cartotto  
 36667 N6IAW William J. Robinson  
 37234 ND5F Harold Parker  
 39117 KC0GM Carol Cooper  
 39625 KE7WL Don A. Whittaker  
 39650 N7HDB Gini Segedi  
 41249 NF9N David F. Brasel  
 41574 WA6MBK Bud Carbaugh  
 41755 KA1LJG Roy Wentworth  
 42171 AA5WC John A. Chudzinski  
 42291 WB7WNF Raleigh G. Elkins  
 42591 AB4HR Charlie K. Akins  
 43253 KB4OHX Jean H. DuPree  
 43283 KB4BBC Raymond G. Hensler  
 43428 KA0ZPP Jim Fox  
 43492 NW0J Richard A. McElravy  
 44303 KA0ZIA Stephanie Fox  
 44617 W6QON Stephen R. Weber  
 44670 WB6NFO Larry Walsh  
 44685 KB6TBW Al Kaufman  
 44717 K4YVX Maurice S. Brimer  
 45160 N2FTT George F. Kopecky  
 45274 KC1FV Richard Parent  
 45659 KJ5CS William Davies  
 46055 KB0ADI Ronald E. Downing  
 46332 KB6SWH Leonard J. Hardy  
 46909 KA3JKP Leonard Morris  
 47126 KB6SWI Betty N. Hardy  
 47230 KA0FJA Harrison B. Scott  
 47286 KA0VTF Cleo George Boyer  
 47824 N4SOJ Joseph J. Bednarz, Sr.  
 48753 KA0VTE Martha Josephine Boyer  
 49305 NK5P Betty G. Ullmann  
 49540 K4VGD Jean B. Desautels  
 50685 N9HED Jean Hed  
 50791 N4LGX Robert Happel  
 50149 K6GWC Mel Erb  
 51056 W0NYG W.T. "Bill" Thompson  
 51826 N6HNF Otis T. Cobb

(Continued on page 11)

## HONOR ROLL SCHOLARSHIP FUND

(Continued from page 10)

51845	WA6TUD	John W. Burton
51873	N6SIF	Neftali Enriquez
52347	K3NNZ	Lothar H. Meyhofer
52485	W1KBV	Earle R. Drake
53761	N6VJI	Francis B. Critchlow
54095	KB5HRR	John R. Gorman
54176	WB8IYR	John L. Dolnacko
54698	N7IVM	William E. (Ben) Bennett
55673	N7MUC	Bernice Peterson
56074	N4ZAP	Charles A. Proctor
56438	NR6I	George Froberg
56860	KA3WWG	Mary Jane Herrington
57540	KC4TAR	Margaret "Gayle" Fawcett
58030	N7PJV	Dale M. Hope
58044	NU7E	Walter J. Micono
58677	KB9GQI	Kim P. Nelson
58789	W0HED	Don Hed
59381	KA0SVY	John F. Schaffer
59574	NF6Y	John B. Miller
59926	KB7NLI	Richard F. Taubert
62349	N0SLK	John Gavagan
62715	KE4GWM	David Bruse
63106	N6ZQC	Jerome Roebuck
63584	KC4UIU	Juanita McKinzey
63659	W8LE	Byrness Haworth
63844	KB0KVA	Carl Nielsen
64196	KQ6KD	Irene Vrabel
64235	KB2NQT	John Przychocki
64282	WA2YCP	Donald Raffaele
64425	KC4ZHZ	Gerard P. Verly
65296	KE6DZH	Lawrence H. Wilson
65767	KE4AAZ	Paul Harvey
65771	N2JGS	Joe Pilus
65812	K6RDK	David P. Smith
65934	N8VJS	Joe Gum
66153	W4TBO	Pete Ling
67317	NU6V	Carl E. White
67548	WQ7A	Terry Dummier
68855	KE6DRN	Chuck Thompson
69161	K6CVK	William H. Olson
69346	KE4UTN	Glen Cochran

Betty Lund, the wife of Life Member Richard H. Lund, WA6HYO #19753, has made a donation for Richard, who has Alzheimer's Disease and is no longer able to function.

Life Member William E. Heberling, WD5EDR #23693, has made the donation to the Scholarship Fund for the Outlaws-on-Ten Chapter in memory of our many silent keys.

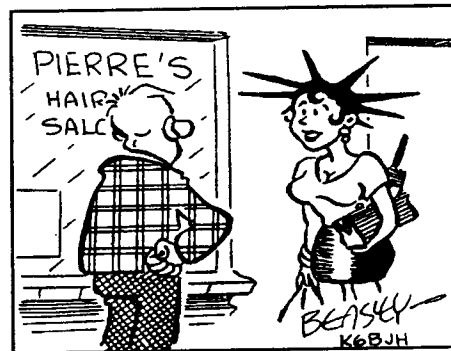
## MORE SCHOLARSHIP FUND VOLUNTEERS

The following 10-10 members became Scholarship Fund Volunteers during the months of August, September and October 1998 by making contributions with their dues renewals. We encourage all our members to follow their fine example.

13307	WA7HOZ	Lawrence D. Rockne
25654	KB6JJ	Howard M. Thompson
30707	WB0UPU	William Olsen
53529	W9RXO	Charles W. Colston
60876	K1SO	Jerry D. Haislip
62054	WB6CIT	Charles D. Fisher
62591	KB7NKP	Gary P. Arko
63015	N3MDF	John P. Simelaro
63770	N7WB	John E. Munger
65249	N0ULL	Billy M. Jones
65658	KE4HKT	Cecil V. Miller
65895	W6RKD	Hector R. Tarango
66130	KE4JSP	Stephen J. Ballog
67884	KC5OSN	Charles A. Nystrom
68496	WA7FXH	Charles W. Massie
68497	KC7TCK	Caroll A. Massie
68717	KM5GZ	Robert B. Coxsey
68773	AD6AA	Michael G. Germino
68774	KE6SAD	Jason M. Germino

Donald Backys, K9UQN #43351 and Clive H. Rogers, WB6YRD #11896 also became Scholarship Fund Volunteers.

You can become a *Scholarship Fund Volunteer* by sending your contribution to: Morrie Goldman W6EHM #4189, Scholarship Manager, 21518 Marjorie Avenue, Torrance, CA 90503-6418. Make your check payable to the 10-10 Scholarship Fund. You will receive a *Certificate of Appreciation for the year 1999* in appreciation of your contribution.



IT'S THE LATEST STYLE FOR YL'S -- IT'S CALLED "EXOTIC GROUND RADIALS!"

# TenX DX News

Mike Davidson N5MT #24949



Conditions on Ten have improved all over the world as the solar flux climbs upwards with the current flux at 163! I just finished working the CQWW contest with the goal of contacting countries that I needed for CW DXCC and I found two new countries on Ten. Higher solar ionization has allowed me to put five new 10-10 countries in my logbook since Temotu Island back in April. I found one ALL time new 10-10 country from Eritrea E30GA so, the number of 10-10 countries will increase to **291 with Eritrea!** The other four new ones for me were from Iceland TF5BW, Libya 5A1A, Slovenia S53EO, and the Czech Republic OK1JN. Yes, I missed a few 10-10 countries during the last cycle. My latest new 10-10 was last week when I invited Billi TF5BW #3714 to meet me on the 28555 weekend DX net.

**Iceland: TF5BW** Billi #3714 has been the only 10-10 member from Iceland for many years. Here is his comments: "Hello Mike. Sorry about Saturday I completely forgot the schedule but will try Sunday. I am using Kenwood TS430S Transceiver and a 3 element Yagi antenna from Fritz in Germany. The antenna is about 10 meters from the ground. I have not been active for the past 3 years but before that I was chasing DX and amateur radio awards. I have worked and confirmed 275 DXCC countries and I have 300 amateur radio awards. In February 1994 I took over as Award Manager IRA the Icelandic Radio Amateurs Association. In 1997 I took over as editor for our club magazine CQ TF. In 1998 I became the Web Master for the IRA Web Page. Although only about 100 members, this takes most of my spare time. Most of the members do live in the capital Reykjavik which is on the SW coast of Iceland but I live in Akureyri on the north coast about 430 kilometers from Reykjavik. It is not a problem to be the editor for CQ TF and live so far away because most of the material is via Email. I do not write it myself, I just put it together, get it photocopied and mail it. 73 Billi"

It took five schedules before Billi and I were able to make contact and signals were very weak! Look for him on weekends just before his sundown at 1500-1600Z on 28555. QSL: Billi Jonsson, POBox 121, IS-602 Akureyri, Iceland.

**E3, Eritrea Africa.** Bruce, WD4NGB, reports that his group completed a DXpedition to Eritrea in November and the first ever 10-10 activity from E3 was

given out by Vance N5VL #63352 (ex.w5iju), Joe KO4RR #46176, Larry NF6S # 51807 and Elvira IV3FSG #54292. Eritrea continues to have a border problem with Ethiopia but tensions have subsided and Amateur radio licenses are being issued. Nellie XE1CI #45888 did not make the trip. Vance had his TS570 and Windom antenna ready to start as soon as they had a license. I worked Vance early which proved important as Vance had to leave unexpectedly when his son was injured in an accident. Please QSL all individual 10-10 and YL contacts with the person you worked, like E30FA was Vance, QSL cards for E30GA go to K4JDJ. They made a total of 35,412 contacts, with 5894 on Ten. Further information and logs can be checked at the Web site: <http://qsl.net/eritrea>.

**T32, Christmas Island:** One afternoon in September, I heard Chuck T32NCC talking about sending in his 10-10 application by ship mail. I called him, told him who I was and promised to get his 10-10 number back to him via radio. His mail got to Hawaii and then went airmail to Carol who assigned #69958. Four weeks later, I found Chuck on 28480 and I gave him his new number on Nov. 22<sup>nd</sup>. Unfortunately a few days later, Chuck told Bruce KK5DO #65027, that he had misplaced his new number! Fanning Island, has no telephone or TV, his TS50 radio runs off two car batteries and he supports himself by selling handmade items to the tourist that come on cruise ships to the island. QSL to: Zoli Pitman HA1AG, Somogyi Bela ut 18, Gyor 9024 Hungary.

## Upcoming DX & New 10-10 Activity:

**V6, Micronesia:** Ann WA1S #48144 wrote: "My callsign is V63HO. I will be on the air sometime around 22 November from Kosrae Island. We are trying for a Special Callsign for the contest. After Kosrae Island where we will stay till around 1 December we will go to Pohnpei till 5 December when we will go to Truk Lagoon till 12 December. Hope to catch you on the air...73/88 Ann WA1S"

**XV, Vietnam.** Larry, K6SGD #7038, was active October 20<sup>th</sup> - November 14<sup>th</sup> as XV1Z. Activity was mainly RTTY. QSL to Larry via home call.

**XU, Cambodia.** A multi-national team will conduct a special events DXpedition from Cambodia, Nov. 26<sup>th</sup> to Dec. 4<sup>th</sup>. A special call, XU1A, has been issued to the team. The only 10-10 team members are: Kazuhiko Fujita VR2KF #69615 and Jan Hallenberg SM0DJZ #31801.

**BV9P, Pratas Island.** This operation took place on November 12-19. Nellie XE1CI #45888 was the first YL ham on Pratas Island and Steve KU9C #31988, is the QSL Manager.

**Editor note: I would appreciate a confirma-**

*(Continued on page 13)*

(Continued from page 12)

**tion of 10-10 activity from XU, XV and BV9P for a New 10-10 Country, thanks.**

**4S, Sri Lanka.** Mario, **HB9BRM #30935** was active as **4S7BRG** from Sri Lanka (AS-003) for a couple of months starting in October. Mario will be home during December, but will return to **4S7** soon. QSL: Mario Primavesi, Falkensteiner- strasse 5, CH-4710 Balsthal / Schweiz.

**OH0, Aland Island.** Alpo **OH3MFP #23423** was active as **OH0MFP** in September. He likes to operate RTTY. QSL to his home call.

**ZL9CI, Campbell Island.** A DXpedition to the rare Campbell Island is on schedule for early January 1999, by Ken Holdum **ZL2HU #37899** and Trey **N5KO** (ex-**WN4KKN #26780**) and a team of non-members. Email: [zl2hu@clear.net.nz](mailto:zl2hu@clear.net.nz) or POBox 56099, Tawa Wellington, New Zealand.

**EL, Liberia.** Mark, **ON4WW** (ex-**9X4WW**, **S07WW**, **5T5WW** etc.) is now **QRV** from Monrovia, Liberia, with the call **EL2WW**. Mark will not return anymore to the Western Sahara.

**BV, Taiwan.** Received a message from Koh **BV/JH3GCN #8850**, who lives in Taipei Taiwan now. Band is now open on FM mode to NA, SA and Eu, so Koh is working many new one! He asked me to inform all members that he is **QRV** on ten meters, mostly 28028 CW. Email: [jh3gcn@gcn.net.tw](mailto:jh3gcn@gcn.net.tw).

**IOTA: T8, Palau.** Operators Dave **KJ9I #28049** Rudolph **NF9V** and John **NZ9Z #49670**, will be active from December 8-17<sup>th</sup> with the call **T88II**. QSL via: Dave Schmocker, N7298 County Trunk Highway F, Oconomowoc, WI 53066-9040.

**SM, Sweden.** A group of nine operators from a Swedish DX club including Ken **SM7CQY #30963**, will operate from the island of Ven (EU-137) from November 6<sup>th</sup> to 8<sup>th</sup>. We will use the callsign **SK7DX**.

**PY, Brazil.** A DXpedition to Comarida Island (SA 024) from Oct. 29<sup>th</sup> for 3 days. Calls used were **PR2YL** on SSB and **PS2S** on CW. The 10-10 member was Teresa **PT2TF #9806**.

A March 1999 DXpedition to **St Peter & St Paul Rocks** **PY0S** by **JA4MRL**, **PT7AA**, **Karl PS7KM #39920** and **Randy WX5L #45611** is on schedule.

**Misc: 5A1A #69222** was listed incorrectly in my last article! **CT98EHI** is **CT1EHI** Marco #62280 was on 28493 until 1530Z SSB and FM. **6W1QV** is **TR8SA** Chris #45817 on 28515 at 1530Z. **V51SG** is Sigi in Namiba #69215 on 28436.

Information on **IRC's** is available on the Internet at: <http://www.ac6v.com/pageff.html#PRIMER>.

Postage is going up in the US to 33 cents January 10, 1999. International rates will probably change later in 1999. **SPECIAL PREFIXES**. Canada has

authorized the use of these prefixes in Dec. 1998: **VE1-9** to **CG1-9**, **VA2-3** to **CF2-3**, **VO1-2** to **CJ1-2**, **VY1-2** to **CK1-2**.

**Propagation:** Solar flux will range from **135-185** during the first quarter of 1999. On Nov. 30<sup>th</sup>, the **Solar flux was 168 the A index 4 and K index 0**, now that Cycle 23 is over one year old, the flux is on a steady long climb upwards. There will be a fifty point swing in the flux numbers during the next three months as more new spots appear on the sun and the first phase of Cycle 23 will last about two more years. **Expect the best conditions on December 10-12, January 6-8, February 2-4 and March 2-4!** The ARRL Ten Meter contest Dec. 13 - 14<sup>th</sup> looks like it will be one of the best in five years. For stations in the Eastern US, expect a 90% chance of DX propagation to the East-West path into Europe or Africa. For stations in the Western US, expect 70% chance of DX into Europe. All of the US will get a 75% chance into Central & S.America. Sporadic E Layer conditions have diminished in N.America as the long haul F Layer skip is dominant. Expect a 5% chance of Long Path into Asia. Remember the beacons (**28.175-28.300**) will tell you what is open, especially 28.200.

**New DX members this Fall:** September New DX Members, **DL2DWP 69814**, **LZ3RN 69815**, **DL0OBL 69816**, **JH7RTO 69817**, **DL3VXX 69818**, **HR1HCP 69819**, **LW1DDC 69820**, **P43E 69821**, **DF4UM 69822** and **VE7IPU 69823**. October: **ZL1DU 69824**, **DL1TS 69950**, **PP5LL 69951**, **DK0SL 69952**, **GM0NTL 69953**, **VE3BUC 69954**, **VK2APG 69955**, **ON4KCN 69956**, **VE9CIR 69957**, **T32NCC 69958** and **AC4XS 69959** (not a new country!) November: **M0BPL 70100**, **IZ8CCW 70101**, **DL0TEN 70102**, **IK8WEJ 70103**, **IZ8BGY 70104**, **LU7HN 70105**, **ON4KVA 70106**, **DL6EG 70107**, **DF0GZ 70108**, **ON6ZK 70109**, **DL2CHN 70110**, **DH2RTW 70111**, **HB9CEX 70112**, **VE4MAR 70113**, **PA3GXV 70114**, **DK0DSW 70115** and **VE7IT 70116**.

73 Carol **K8DHK #29588**.

Congratulations to Neldo **LU5HE #10334** for his 5200 Bar #69, Jim **VE1JIM #42045** for his 2100 Bar #464, Henry **DL8YBM #36109** for his 3100 Bar #228 and to Rosemary **KL7LA #31437** for her 2800 Bar #287.

Thanks too: the on-line DX List, **QRZ-DX**, 425 **DX News & Ohio/Penn DX Bulletins**. Send photos to Mike Davidson, 3518 Bellefontaine, Houston, TX 77025 USA Email: [N5MT@aol.com](mailto:N5MT@aol.com). **DX IS!**

73 Mike Davidson **N5MT #24949**

# Chapter Coordinator's Column

By Dave Smith, K6RDK #65812

**Applications Pending:** Cast Iron Tower Chapter, Kleindehsa, Germany

**Newly Affiliated:** Elmer J Fudd, Berwick, PA

**Reports Due This Quarter:** Boomtown, City of Lights, Concho Valley, Cowtown, Dollchaser, Electric City, Muletown, River City/Cameilla Capital, Stark County Mutual Aid, Tango, Tom And Jerry, Twin Cities

**Reports Past Due:** Cradle of Liberty, Omaha 10M Zero Net, South Texas Lighthouse Brigade

**In Extremis:** Loose Nut Net, Lindbergh

**No Longer Affiliated:** Blackhawk Valley, Lancastrian, Pendlewitch, Platte River, Chattanooga Choo Choo, Choo Choo Belles, CompuTrain, South Carolina Golden Corner

**REMINDER** - To remain affiliated with 10-10 International, all chapters must fill a chapter report at least once each year. This information is used to update the 10-10 Awards guide and the monthly Guide updates. We don't want the membership wasting their time and money on a chapter that is no longer active. If the name of your chapter appears above, please advise the Chapter Coordinator if there has been a change in status of the chapter.

**New Feature** - To make it easier for chapters to submit their Quarterly Reports I have developed a web page that the Quarterly Report may be submitted. Interested Chapter Heads may email me for the URL. I am hoping this will make it easier for DX chapters to submit their reports and cut down the postage. Feel free to comment.

I wish to thank Chuck AH6KB who put together the original pages and John N9UKX who helped fine tune the pages.

With the band opening up more and more this means that members may be hearing more nets. There is a net list on tenten-l which is updated quarterly at <http://listserv.lehigh.edu/lists/tenten-l/nets.html> or is available from the Chapter Coordinator for a #10 SASE.

## Newly Affiliated:

**Elmer J Fudd Net** is a newly affiliated chapter. Basic membership; Work 10 regular Fudds or work 1 FM, SQ, or WH, proof of 10-10 dues and send \$2.00 for U. S. and Canada and \$3.00 for DX to the CM, Terry Fulton, K2HO, 45 Villa Street, Rochester, NY 14606. The net is Monday through Friday at 1230 UTC on 28.340

## Chapter News:

**Alii's Chapter** members who have not been the "Menehune" and wish considered in the future, please let the CM know so that a list of eligible members can be compiled. Either e-mail with your call, name, and chapter number ([smshirai@juno.com](mailto:smshirai@juno.com)); or snail mail NH6SJ, Sam Shirai, PO Box 987, Lihue, HI. 96766.

**Branding Iron** will be moving their net time to 2200 UTC during winter and 2300 during the summer on Thursday. The frequency remains the same at 28.345.

The **Broken Heart Chapter** will be offering a Worked All Continents certificate for members of the Broken Heart Chapter. Cost will be \$1 US & 2FCS \$2 DX. Qualifications: Work one Broken Heart Member in 6 different ARRL approved Continents. Proof of contact necessary. You will be awarded 100 points. To start December 1, 1998

**Castle Craig** announces the new Castle Craig Plus Program which starts Jan 1<sup>st</sup>. The purpose is to provide a way for Castle Craig Certificate Holders to participate in program, which allows them to exchange points on the air to upgrade. Members need to have a basic number and the first two seals. For complete details email or send SASE to NIAPL.

The **Colorado Centennial Chapter** issues the **GOLDEN ASPEN AWARD**, to qualify you must have a *Centennial* number, and a *Colorado Frontier Gang* number. Fee \$1 (stateside) \$2 (overseas) and 2 stamps (U.S.) This award accumulates points as with the basic award (1=100).

The **Colorado Centennial Chapter** has a real pretty certificate called the **HONOR ROLL**. It is earned by applying for 3 other awards: **BLACKJACK**, **TOP 40** and **50 GRAND**.

If you have at least 21 other chapter awards your eligible for **BLACKJACK**. You need at least 40 other chapters for **TOP 40** and 50 others chapters for **50**

(Continued on page 15)

## Chapter Coordinator's Column

(Continued from page 14)

**GRAND AWARD.** If you have all 3 awards then your ready for **HONOR ROLL**. The **HONOR ROLL** is sent automatically with the **50 GRAND**. Apply for all three at same time and fee is only \$1 to Chuck NOCKW, 13950 E. Oxford Pl. #B308, Aurora CO 80014

**Cradle of the Confederacy SPECIAL EVENTS:** The Cradle of the Confederacy holds two special events each year. First is to commemorate Jefferson Davis taking the oath of the office as first president, Confederate States of America on Feb. 18, 1861 in Montgomery Alabama and subsequent inauguration on Feb. 22, 1861. The second event is in June to commemorate Jefferson Davis' June 3, 1808 birth.

The 1999 CSAF inauguration event will run from 0001Z 13 Feb. to 2359Z 18 Feb. 99 and the Jeff Davis birthday event will run from 0001Z May 29 to 2359Z Jun. 3, 1999. Contact with any Cradle of Confederacy Charter, Local Charter or Local (C, LC or L) is an instant qualifier for the C of C numbered certificate. Call frequency 28.350 MHz. Send QSL information with \$2.00 to K4OZN, 2141 Edinburgh Drive, Montgomery, AL 36116-1313 or send SASE for special event QSL card only.

**Electric City** – The Watch Special, which started Sep 1st, will be extended to the end of January. Every Electric City member is an IQ and the goal is to reach 1000 members. The person who recruits the most will receive an Electric City watch.

**Fort McHenry/Cornerstone** – Collect W3FQN Memorial Award numbers for 1 FTMCH points each. Collect Cornerstone Recruit 97 numbers for 5 Cornerstone points each. Upgrades must be postmarked no later than February 28, 1999.

On February 1, 1999 we are adding a new certificate to the *Cornerstone* program, it is called the **AA3CA Memorial Award**. This award requires that you work 10 Charters, 10 FS, FC, FP, 10 Honorary Charters, 5 Locals and 20 other members for a 200-point upgrade. Cost is \$1.00 and 2 FCS, DX \$2.00 or SASE for a number only. All contacts must be made after February 1, 1999. For a worksheet send a SASE to Bill Jowanowitch, K3TUIJ, 963 Stormont Circle, Arbutus, MD 21227 or e-mail [k3tuj@juno.com](mailto:k3tuj@juno.com)

**Kansas Trails** is having a special called **1999 Square Dance**. It starts 0001 January 1<sup>st</sup> 1999 and concludes

2359 March 15<sup>th</sup> 1999. There will be Dancers, Musicians, Callers and a Master of Ceremonies. To get a special or worksheet just upgrade or request one via email to [kb6upg@willmar.com](mailto:kb6upg@willmar.com)

**Restoration Project** - Early drafts of the Build It worksheet had the name *hi/lo beam switch* on them. Later versions changed this to the more common name **DIMMER SWITCH**. So, if you have *hi/lo beam switch*, & someone gives you *Dimmer Switch*, use it there. Incidentally there are a total of 56 parts to be found. If you have fewer than 56 on your printout, your printer may have "dropped" a line or two.

**Restoration Project/GB Ten Joint Special** - The **CLASSIC CAR SPECIAL** is a joint special between the *Restoration Project* and the *GB Ten* Chapters.

Start: 1<sup>st</sup> January at 0001 Z: Finish: 28<sup>th</sup> February at 2359 Z. Last date for submission is the 14<sup>th</sup> March 1999.

The *Restoration Project* will credit all Specials and likewise the *GB Ten Chapter*. Copy worksheets to both Chapters for credit. Even with one Chapter you may still collect both Chapters Specials and receive credit from the one Chapter you do have. *Restoration Project* to VE7ACM and *GB Ten* to G4KHF. Specials are 2 points each. Two worksheets now issued. If you COMPLETE 2 worksheets at 2 pts per Special you may request a third for 3 pts per Special found. A maximum of 3 worksheets only, no dupes! You may use your own special (from both Chapters) for full points.

**Samuel Clemens/King Arthurs Court** -- has a new CM. Robert Stein, WB1HJC has volunteered to take the CM position in relief of Hal Carter KA1FVN for health reasons. We wish Hal all the best and thank him for his many years of service of these chapters. Bob's address; PO Box 6042, Stuart, FL 34997-6042

**Springbok** – Chapter contest results; Europe SSB, Peter G4YNO, North America SSB, Mike N5MT, Oceania SSB, Tony VK6PP, Africa SSB, Ken ZS6NB, Africa CW, Bill ZS6KO. Congratulations to all the winners and thanks to all whom entered. A full list of all the winners is on the SCI web site: <http://www.icon.co.za/~teldon/sci.htm>

**Twin Cities** - Effective immediately, collection of the City of Lakes seal will be capped at 125.

(Continued on page 16)

## Chapter Coordinator's Column

(Continued from page 15)

**Westward Ho** - Changes to the chapter the upgrade certificates are collectible now. Lewis and Clark 2pts, Ft. Atkinson 3pts, Cont. Divide 5pts and Final Frontier are 10. The convention numbers will be 1pt when issued. Yes, they are retroactive.

### List of chapters that accept Email upgrades.

(Current as of 01 Dec 98)

All of the listed chapters generally need previous, new, and total points and seals claimed. Any transaction with the CM which requires that a certificate be issued, and most worksheet specials should still be handled via US Mail. Also to be on the safe side, a detailed listing of the upgrade should be kept in the event that the CM should require verification. Requirements peculiar to a particular chapter are noted below. To be added to, deleted from, or make changes to the following list of e-mail upgraders must be made in writing or e-mail communication between the Certificate Manager and the Chapter Coordinator.

**Battle Road** - CM KC1FV, kc1fv@juno.com - Need basic number and current point value Old, New, and Total points and contacts. Contact Rich via e-mail for info on the retrieval of the upgrade form designed for use with upgrading via e-mail, packet, or TCP-IP.

**Bay Area** - CM K6RDK, k6rdk@SMRN.com

**Bounty Hunters & Outlaws on Ten** - CM WD5EDR, billheb@texanet.com

**Branding Iron** - CM KA5VVD, ka5vvd@vvm.com

**Branding Iron II** - CM N5XJD, n5xjd@juno.com

**Broken Hearts** - CM K4CIH, k4cih@earthlink.net

**Colorado Frontier Gang** - CM WB0CON, wb0con@juno.com

**Fort McHenry, (including Cornerstone and Yondar Kritch)** - CM K3TUI, k3tuj@juno.com

**Dollchasers** - CM KA5OVO, ka5ovo@aol.com

**Eagle Watch (including Wildflower and American Wildlife)** - CM KC4SDU, kc4sdu@localaccess.net

**Electric City** - CM WA2OIZ, wa2oiz@brevard.net

**GB Ten** - CM G4KHF, gbtan@globalnet.co.uk

**Great Lakes** - CM WA8OXS, wa8oxs@gci-net.com

**Great Smoky Mountains** - CM W4RNL/N4TZP, cebik@utkvx.utcc.utk.edu

French Broad and Holston programs should be submitted via US Mail.

**Houston S.H.O.T.** - CM N5AFV, afmattis@hal-pc.org

**Kansas Trails** - CM KB6UPG, kb6upg@willmar.com

**Liars2 and Metro Chapter** - CM WB2SJQ,

wb2sjq@aol.com

**Mississippi Lighthouse** - CM N5LBZ, scole@juno.com - Flame Bearer, Blue Seal, Beacon Shaft, and Gold Seal upgrades via e-mail, all other via US Mail.

**\*Muletown** - CM N8JQJ, sprins@columbia.total-web.net - submit previous, new, and total points collected and contacts. Seal upgrades continue to be handled by the CM via US Mail.

**Neanderthal** - CM DL7KHK, dl7khk@qsl.net

**Old Ironsides** - CM W1MXI, w1mxi@juno.com

**Peshtigo Fire** - CM W9BLI, w9bli@itol.com - points and seals upgrade submit total, new, and previous also need total contacts for chapter

**Portland 500** - CM N7YBX, n7ybx@pcez.com

**\*Portland Bridge** - CM K7PRZ, k7prz@teleport.com

**Restoration Project/Feline Friends** - CM VE7AAP/VE7ACM, catsncar@arrowsmith.net

**Sky Blue Waters/Tin Lizzie** - CM-WB0RCC, cedwards@isd.net in addition to old, new and total points. Submit total contacts, basic number(s) with current point value, 10-10 number with date of expiration.

**South Texas Lighthouse Brigade** - CM N5DAS, n5das@juno.com old, new and total points, total contacts, and date of issue of original certificate.

**Steel City** - CM-KE9WZ, ke9wz@megsinet.net

**Twin Cities** - CM WA4KUP, wa4kup@aol.com

These addresses are as current as the information you provide me. If there are any additions, corrections or deletions this list please contact the Chapter Coordinator, K6RDK Dave via Email: k6rdk@SMRN.com.

I must have my report in to the editor of the 'News' no later than the first of the month of March, June, September, and December. So in order to make the deadline and if you want your chapter information in the current issue, it needs to be in my hands by the 15<sup>th</sup> of February, May, August and November. Often chapter or special information is received too late to make the issue on a timely basis.

The column for the January issue for instance must be submitted to the editor around the 1<sup>st</sup> of December. So if your special is to run 1<sup>st</sup> through 31<sup>st</sup> December, it should be in my hands prior to 15<sup>th</sup> August to be in the October issue, as the following issue of the 'News' will not be out until January after your special is over.

Chapter information is printed on a space available basis, sometimes not all information received can be printed.



# Operating on Ten Meters

## - Part 2 -

by G4BLH/KF4SAZ

### Operating in a Chapter/Ten-Ten Net

As was pointed out in the first part of this article, as band conditions improve, and more and more stations appear on the band, it makes a lot of sense, when many people are basically interested in the same thing, e.g. exchanging TenTen numbers, collecting chapter points or even working some rare DX. to organize a net.

There are many 10-10 Chapter nets in operation at various times of the week (a full list of operating times and nominal frequencies (+/- a few kHz) may be found in the 10-10 net guide in the 10-10 Information Brochure). However, when conditions are reasonably good, you will often find that a group of 10-10 stations will gather on a clear frequency and to make life easier, and to give all the stations a chance of picking up 10-10 numbers and/or chapter points, an unofficial net will be started.

What happens is that one of the stations will 'volunteer' (or be volunteered HI) to act as a net control station, and he/she will initially make a list of the stations that can currently be heard on the frequency. The station acting as net control will then give out his/her basic information, e.g. call-sign, location, 10-10 number, VP number (if one exists) and then some basic chapter information (usually brief info about chapters currently being pursued and current point values). The net control station will then invite the first station on the list (I will call this station A) to pass out similar basic information.

*WHILE THIS IS HAPPENING, THE OTHER STATIONS SHOULD BE NOTING DOWN THE INFORMATION THAT IS BEING GIVEN OUT.*

When station A has passed his/her basic info, the net control will acknowledge receipt of it, then invite the next station (station B) to give out that station's basic info, acknowledge receipt of it (and/or make any queries), then invite station C to give out basic information and soon. This may be a rather tedious procedure, but as long as stations keep it brief, and to the point, IT WORKS, but it is important that any members (or po-

tential members) of the net make a note of information *AS IT IS BEING GIVEN OUT.*

Now, having acknowledged receipt of the info from all the stations on the list, Net control will invite Station A to briefly contact any (or all) stations from the list and 'QSL the info' or make brief inquiries if needed (e.g. some info may have been missed because of a burst of QRM). Station A will inform Net control that he/she has finished, Net control will then invite station B to contact any stations from the list, and so until all the original stations on the list have had a chance to make contact with each other. By the time the Net has been running for a while, conditions may have changed, and other stations may now also be listening on the frequency hoping to join in, a good Net control station will pause from time to time and ask any other stations 'on the side' who may wish to join the net, to note down the information that is being given out. Net control will also point out that these stations will be invited to join the net when the first 'pass' is complete (i.e. when all the original stations in the net have had chance to contact each other). When the first pass is complete, Net control will ask for the callsigns of any stations that wish to join the net. (This is your chance to join the net if you were not in it at the start). Net control will collect callsigns of new stations joining the net, and of course will note down callsigns of those who may have to leave the net at this point. If the band is really opening up, it may also be necessary to ask some stations to act as relays for others (e.g. if net control was me, G4BLH in England, I might be hearing East Coast US stations, but I might not be able to hear West Coast US stations, in which case, I would need an East Coast station to relay information to/from me. Sounds complicated? yes it does, but you soon get used to it. With a new list of stations, the procedure starts again. Yes, I know it is not necessarily a terribly efficient way of doing things, and there can be problems (particularly if you are the last station on the list and the band is on the point of dropping out). An experienced Net control station is well aware of all this and will try to keep things running smoothly, and may occasionally choose to change the order of things under exceptional circumstances.

The main things to remember are: -

- (a) Note down the information that is being given out (even if you may not yet have joined the net. It avoids having

*(Continued on page 18)*

## Operating on Ten Meters

(Continued from page 17)

to have the same information repeated several times, (which just slows down the operation of the net). This applies even when you cannot hear ALL the stations in the net.

(b) If you hear the net after it has already been running for some time, don't try to 'break in' to the net while information is being passed. Wait for a gap in transmissions, and preferably wait for the net control station to invite stations to join the net.

(c) KEEP IT BRIEF. When you are asked to give out your basic info, don't try to pass out points and numbers for every chapter for which you are a member. Keep it to just a few chapters and exchange 'lists' via surface or E-mail.

### Sample 10-10 Net Operation:

G4BLH has agreed to act as Net control, and has a list of three stations (to keep it simple HI) in the net, G4GIZ, W4RNL, K4CIH and G4CPS

(G4BLH) this is G4BLH, my name is Mike; the QTH is Nelson in Northwest England. My 10-10 number is 18446 with a VP of 2864 My GB ten number is 15C worth 2168 points, the 5K seal is number 9. My Battle Road number is 262DXFC for 867pts. My Route 66 number is 140DXFC for 166pts. G4GIZ, please go ahead with your basic information.

(G4GIZ) Good afternoon Mike, and hello to everyone on the Net. The name here is Eddy and I am located in Earby in Northwest England. My 10-10 number is 28686 and my VP is 1653. My GB-Ten number is 7C for 5010 points with a 5K number of 22. My Old Ironsides number is 294HPO for 1765 points. My Fort McHenry is 1HCW for 70 points. I am looking particularly for Old Ironsides. I QSL your 18446 and 2864 and all your chapter information

Mike. (G4GIZ passing it back to G4BLH.)

(G4BLH) Thanks Eddy. I QSL all 28686 and 1653 and your chapter info. My Old Ironsides is 536DX for 2450pts. QSL?

(G4GIZ) - QSL.

G4BLH to W4RNL, good afternoon, please give out your information.

(W4RNL)- Hi there Mike, long time no hear. This is LB in Knoxville, Tennessee The 10-10 number is 41159 and the VP number is 2143. My GB-Ten number is 160HM worth 3721pts. My Great Smokey Mountain Pioneer is number 1CLFS for 2020 points. My Battle

Road is number 86CT for 373pts. My Old Ironsides is 407 for 1248 pts. Any other info needed by anyone provided on

request. I QSL all your information Mike. (W4RNL passing it back to G4BLH.)

(G4BLH) Thank you LB. I QSL all your information, and its good to

hear you again after such a long time. I will exchange a list with you via E-mail if that is OK, QSL?

(W4RNL) That will be fine Mike, QSL.

G4BLH to K4CIH, your turn Tom, go ahead with your information please.

(K4CIH) Hello Mike and thank you. This is Tom, K4CIH in Tuscaloosa, Alabama, 10-10 number 33233 with a VP of 1122. My Broken Hearts number is 3CL for 5500pts. Battle Road is 241 for 873 points. My Chesapeake Bay Chapter number is 300. I QSL all your info Mike Do you have a CBC number. Back to G4BLH from K4CIH

(G4BLH) Okay Tom. I QSL all your information. Yes I do have a CBC number. It is SQ296, QSL?

(K4CIH) QSL Mike, many thanks.

(G4BLH) My pleasure Tom. Okay, G4CPS, go ahead with your information.

(G4CPS) Hello Mike. The name here is also Mike, and G4CPS is the Club Station for Park High School located in Colne, Northwest England. The 10-10 number is 64631. No VP number yet and we do not have any chapters, just collecting 10-10 numbers. I QSL your 10-10 number of 18446 and pass the microphone back to you. G4BLH, this is G4CPS.

(G4BLH) Hello Mike, and welcome to the net. I QSL your 10-10 number of 64631. Nice to work you for the first time.

G4BLH to G4GIZ, go ahead and work any stations on the net.

G4GIZ- Thanks Mike. W4RNL, I QSL all your information LB, and good

To hear your distinctive tones again HI. I presume Jean is not in the shack today, so please pass on my best wishes to her. I don't have E-mail, but can we exchange lists. Go ahead.

W4RNL I QSL your info Eddy, and list by snail mail is fine Eddy. No, Jean is not in the shack today, but I will pass on your regards. Back to you.

G4GIZ - Okay LB, many thanks.

K4CIH from G4GIZ, Good afternoon Tom. I QSL all your information. I think we are fairly up to date, so won't send a list. K4CIH - Hi Admiral, I QSL all your

(Continued on page 19)

## Operating on Ten Meters

(Continued from page 18)

information. Will look for you tomorrow on the GB-Ten net.

G4GIZ - Okay Tom, clear with you. G4CPS, I spoke with you yesterday,

so will just say hello. From G4GIZ

G4CPS Hello Eddy, nice to hear you again, from G4CPS

G4GIZ Okay Mike, that is it from me, back to you.

(G4GIZ passing it

back to G4BLH.)

G4BLH Thank you Eddy. W4RNL make your calls please.

W4RNL Thank you Mike.

K4CIH, hello Tom. Not too strong a signal from you today, but I QSL all your information. K4CIH from W4RNL.

K4CIH Hi there LB. You are a bit weak as well, but Q5 all the time. I QSL your information. Back to you.

W4RNL Thanks Tom. G4BLH, I cannot hear G4CPS, so that completes the list for me. W4RNL back to G4BLH

G4BLH Thanks LB. K4CIH, go ahead with your calls.

K4CIH Thanks Mike. G4CPS, I QSL your 64631. Nice to meet you for the first time, and thanks for the new 10-10 number.

G4CPS Hello Tom. I QSL your 33233. I am working on the 10-10 counties award, so would you please tell me your County. Over

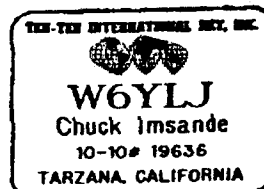
K4CIH The County is Tuscaloosa County, QSL.

G4CPS got it, many thanks, microphone back to you from G4CPS

K4CIH Okay. I have worked everybody else, so I think I am the bottom of the list. Back to net control from K4CIH

G4BLH Many thanks, that's it for the first run through. This is G4BLH operating with a number of 10-10 stations. Is there anyone wishing to join the net? (I would now take a list of stations wishing to join the net, and find out which stations were leaving the net), and we would start again.

*Strange phonetics:* 10-10 chapters have various categories of membership e.g. Charter members, Honorary Members, Honorary Charters etc. If, when chapter information is being passed, you hear the expression Hot Milk, this is referring to HM (Honorary Member) Hot Chocolate is referring to HC (Honorary Charter).



BADGE SHOWN 1/2 SIZE

## THE SIGN MAN OF BATON ROUGE

Although 10-10 does not include advertising in the 10-10 News, there are a few vendors that we use strictly for 10-10 items and memorabilia.

Rick Pourciau, NV5A #49338, The Sign Man of Baton Rouge, is our official supplier of 10-10 name badges, 10-10 coffee mugs, QSL cards, eyeball QSL cards, T-shirts and caps.

Rick has been in business since 1984 and does a superb job with anything you order. He produces two styles of official QSL cards, and they are a fine piece of work. Connect with Rick and see what he has to offer, as his work is first class and prices are reasonable.

As an example: the 10-10 badge shown above can be ordered at a cost of \$8.50 post paid. Send Rick the following: Call Sign, Name to appear on the badge, 10-10#, City and State. Colors are Green for regular members, Orange for life members, and Pink for YL members. Send your order to: Rick Pourciau, NV5A, 879 Castle Kirk Drive, Baton Rouge, LA 70808-6020. Allow 2 weeks for delivery.

More information can be found by calling toll free 1-888-HAMTAG (426-8241). By internet he can be reached at <http://www.thesignman.com> or by e-mail at [nv5a@aol.com](mailto:nv5a@aol.com).

## TEN-TEN STAMPS

ORDER FOR ALL YOUR CORRESPONDENCE

144 SELF STICK FOIL STAMPS \$5.00 POSTPAID

SEE PAGE 31

# Catch us on the WEB

<http://www.ten-ten.org>

# 10-10 Reflections

by Morrie Goldman  
W6EHM #4189  
10-10 Historian



The 10-10 election results were announced in the October 1998 News. Congratulations to the new Directors and to the officers and Directors who were re-elected. We are fortunate that Tom Henderson, K4CIH #33233 will continue to serve with distinction in his next term of office.

Here is a list of 10-10 Presidents starting with Irving F. Hunter (SK), K6PWO #97, the founder of the 10-10 International Net of Southern California in 1962.

1962	K6PWO	00097	Irving F. Hunter (SK)
1963	K6ZPW	00091	Scout Grey Eagle (SK) <sup>1</sup>
1963	WA6KBO		Lee E. Burch <sup>2</sup>
1964	K6CQN	07999	Joseph S. Plumb (SK) <sup>3</sup>
1965	W6VEE	00034	Edwin A. Steinbach
1966	W6TCH	00011	Robert C. Steinbach
1967	W6FFN	00098	Charles "Newt" Fisher (SK)
1968	WB6LWW	00103	Edgar O. Blore
1969	W6FFN	00098	Charles "Newt" Fisher (SK)
1970	W6EWO	00417	Joseph G. DiCarlo (SK)
1971	WA6LVA	01279	William G. Fuller
1972/73	WB6LWW	00103	Edgar O. Blore
1974/77	W6EHM	04189	Morrie Goldman
1978	W6ENC	01774	George E. Elliott (SK)
1979	W6WPY	14949	Robert O. Hartley (SK)
1980/82	W6QIR	04509	Howard A. Bowman (SK)
1983/84	W6OAW	10947	Carl Winter (SK)
1985/88	W6QIR	04509	Howard A. Bowman (SK)
1989/94	W6IRT	14981	Norm Lefcourt
1995/	K4CIH	33233	Tom Henderson

<sup>1</sup>Resigned

<sup>2</sup>No 10-10 # ever assigned

<sup>3</sup>Assigned #7999 in proper sequence when renewing 10-10 membership

Twenty years ago, the January 1979 Winter Bulletin (now the 10-10 News) featured Claude Martin (SK), W6LRY #437 on the cover page in recognition of his service to the 10-10 from its inception in 1962. He initially served as Corresponding Secretary, then Certificate Manager and finally General Manager. He performed his 10-10 assignments in a professional manner, and because of health reasons, he resigned as General Manager.

Here are some excerpts from "Words From the President" by Bob Hartley (SK), W6WPY #14949, in the Winter 1979 Bulletin:

*As we enter a new year, I find excitement growing in anticipation of continued improvement in ten meter band conditions. This will surely bring with it an avalanche of activity unparalleled in the history of ten meter operation. This, of course, is what we have all been waiting for and, hopefully, will pay off for the patience we have endured during the "quiet" period of band activity. This new found excitement, however, will present challenges to all of us in the 10-10 organization. These challenges are not so much associated with the ability to make contacts as much as preventing chaos as is sometimes experienced on other bands. I believe we have a golden opportunity to help perpetuate the purpose of the organization during the next couple of favorable propagation years by providing concentrated energy to establish strong and united relationships with fellow amateur radio operators in all sectors of the world. From these contacts and relationships, I look forward to many new members and chapters being established throughout the world, thus providing a medium of sustaining activities on the ten meter band in these areas, even when the propagation cycle is less favorable.*

*Of course, we will be tested and challenged in regards to non-Ten-Ten amateurs riding the crest of the exciting ten meter wave. After all, they may ask, why 10-X when the band is active anyway? We must remain courteous and retain the spirit of amateur radio fellowship which, after all, is why we find ten meters and the 10-X so satisfying. Don't hesitate, however, to expound the virtues of the 10-X... 23,000 members can't all be wrong.*

And that's the way 10-10 was, twenty years ago.

Hope you all enjoyed the holidays, the reappearance of great ten meter band openings, and may 1999 prove to be a wonderful year for all our 10-10 members to reflect upon!

## 11th Annual 10-10 Hill Country Picnic

The 11th annual 10-10 Hill Country Picnic will be held on June 6, 1999 at the home of Jack, K5CC. This is the weekend before the 10-10 Convention and we invite people going to the Convention to stop by the picnic. Flyers will be sent out several weeks before the picnic to those attending the 1998 picnic as well as those who have expressed an interest. If you are interested contact K5CC (k5cc@gvvc.com).

# NET NEWS

by Bill Marple, AA6ZW, Net Manager

Here we are again, after missing the last issue of The News. My XYL and I were on vacation, and missed the deadline for publication.

Our nets are really doing well, and running long, some up to three hours or more. The band has been open so well, that check-ins are coming from all over the world. Some examples are Hawaii, New Zealand, Australia, Canada, The Caribbean, South America, and Africa. Many new contact are being made, as well as renewed friendships with stations that we haven't heard from in years. Now is the time to really get involved, and check in to work those new ones.

A big word of thanks to our fantastic net controllers for "hanging in there" during those long nets. They all are doing one heck of a great job, and we should remember to show our support by checking in as often as possible. Remember, they are there for you.

I would appreciate the help of all our members in remembering that we have scheduled nets at 1800z

---

## 10-10 Scholarship Applicant Information

Each year the 10-10 International Net funds four \$1,000 scholarships, which are awarded by the Foundation for Amateur Radio (FAR).

Licensed Radio Amateurs may compete for these 10-10 Scholarships if they plan to pursue a full-time course of study beyond high school and are enrolled in or have been accepted at an accredited university, college or technical school.

Additional information and an application may be requested by letter or QSL card after 1 January but prior to 30 April from:

FAR Scholarships  
P.O. Box 831  
Riverdale, MD 20738

Applicants for the 10-10 Scholarships who are not active 10-10 members must provide a written recommendation from a current, active 10-10 member (one whose dues are paid current). Applications must be signed and received by FAR prior to 1 June.

every day except Sunday. Lately, we have experienced a lot of QRM caused by stations who do not hear net control at net time. Some will continue QSO's, or begin new ones on net frequencies.

These stations are almost always heard by the net control station, and this causes a problem in calling the nets. We realize that most of the time, this is not intentionally done. While we don't "own" the frequencies that we use for our nets, we would appreciate the cooperation and consideration of our members in remembering our scheduled net times.

On a sad note, I have reluctantly accepted the resignation of Al, W6RNX, #92, our Saturday 28.800 net controller. Al has called the net for the last 20 plus years, and we will miss hearing his voice calling "CQ 10-10". We all extend our thanks to Al for all the years of faithful service and dedication to the nets, and 10-10. We all wish Al the best, and hope to hear him checking in on the nets often.

Taking Al's place is Dirk, VP2VF, #63440. Dirk is located in the British Virgin Islands, and his QTH will enable our nets to be heard in Europe, Africa, and many other areas that we may have been missing. If you have not had the pleasure of working Dirk, and meeting a true gentleman, check in with him on Saturday at 1800z on 28.800. Who knows, you might even get to work some rare DX too. It is a real pleasure having Dirk on board with us.

I also want to thank all of our officers, directors and officials who support the nets by checking in regularly. Your participation is greatly appreciated.

Until next issue, I wish you good DX and 73.

---

## W6OI #109 on the Air

Louise Chapman, N6ELK #36654, has volunteered to be the 10-10 Net Control Operator for W6OI #109. This will make each Wednesday beginning at 1800Z on 28.800 MHz a very special event. Please include a SASE when requesting a W6OI QSL card via N6ELK, 3210 Clark Ave., Long Beach, CA 90808.

The 10-10 Club Station, W6OI #109, is available to any current (dues paid) 10-10 member or chapter for use as a special event station, Field Day station, etc. Send a written application, including dates of operation, purpose of operation and any other information to: Morrie Goldman, W6EHM #4189, W6OI License Trustee, 21518 Marjorie Avenue, Torrance, CA 90503-6418. Enclose a photocopy of your amateur license.

# 10-10 AWARDS

as reported prior to December 1, 1998

## TOP TEN HONOR ROLL

Allen Mattis  
N5AFV #27571

CALL	10-10#	CONT
1) WA5JDU	3017	23800
2) W0RWC	518	19400
3) WB1DBZ	26001	19200
4) PJ2WG	27999	17000
5) W4WKQ	33299	16700
6) K5MRU	218	16500
7) WB7NUU	17416	12200
8) WA9LIC	1599	11600
9) K0PV	9902	11500
10) N5CUQ	40	11400

## 500 BAR

### AWARDS

Dan Morris  
KZ3T #41015

CERT#	CALL	10-10#
NONE REPORTED		

## 1000+ BAR

### AWARD

Allen Mattis  
N5AFV #27571

## 1000 BAR

CERT#	CALL	10-10#
1440	N3TGB	68129
1441	N6XD	18637
1442	WD4EQU	26853
1443	KC7OC	67668

## 2500 BAR

CERT#	CALL	10-10#
377	KQ4PK	63201
378	K7QXG	5956
379	WB6PCC	2938

## 5000 BAR

CERT#	CALL	10-10#
73	LU5HE	10334

## 7500 BAR

CERT#	CALL	10-10#
NONE REPORTED		

## 10000 BAR

CERT#	CALL	10-10#
NONE REPORTED		

## LUCKY 13 AWARD

Dan Morris  
W0HIK #40678

CERT#	CALL	10-10#
NONE REPORTED		

## VP AWARDS

Carl Fisher  
W0HIK #40678

## VP100

CERT#	CALL	10-10#
394	N6XD	18637
395	KB0TUI	67939
396	WA4ETZ	57478
397	N3TGB	68129
398	N4ZCG	56067
399	KC5LTK	67896
405	KJ7RF	69390
406	N3TSV	68156
407	DL8YBM	36109
408	VE7ACM	30939
409	VE7AAP	50407
410	KL7LA	31437

## VP200

CERT#	CALL	10-10#
194	W9OO	9973
195	AA6ZW	62075
196	K5PUD	67061
197	KB8QKV	67641
201	KC7OC	67688
202	DL8YBM	36109
203	KK5DO	65027
204	KL7LA	31437

## VP300

CERT#	CALL	10-10#
120	K4ADB	17538
121	KA2NJE	49721
122	KA9ADD	42381
123	W9OO	9973
124	WB3FGU	16728
127	WB6JVP	63117

## VP500

CERT#	CALL	10-10#
48	KC4LOR	56976
49	KB5UNX	64337
50	N6GDS	36046
51	KZ3T	41015
52	KE9WZ	49610

## VP600

CERT#	CALL	10-10#
28	N7HDB	39650

## VP700

CERT#	CALL	10-10#
18	KA7ICF	46221

## VP900

CERT#	CALL	10-10#
13	NX5T	1522

## WORKED ALL CONTINENTS AWARD

Dick Corlew  
NC6V #25057

CERT#	CALL	10-10#
480	N3NOP	63098
481	K4RL	1568
482	N3TGB	68129
483	N1LFN	63941
484	K6EHA	65801
485	AA6ZW	62075
486	KJ7RF	69390
487	KA3WWG	56860

## COUNTY HUNTER AWARD

Hank Richroath  
K5HWI #63313

## 100 COUNTIES

CERT#	CALL	10-10#
417	N3TGB	68129
417	ZL3JD	61547

## 300 COUNTIES

CERT#	CALL	10-10#
150	KD6HWD	62083
151	W1LIC	46677

## 600 COUNTIES

CERT#	CALL	10-10#
72	DL8YBM	36109
73	KL7LA	31437

## 700 COUNTIES

CERT#	CALL	10-10#
50	N1PDV	63955
51	W0HIK	40678

## 1100 COUNTIES

CERT#	CALL	10-10#
14	AA1KS	

## DX COUNTRIES AWARD

Russ Gauthier  
N5EJS #1525

## 25 COUNTRIES

CERT#	CALL	10-10#
534	WB4FBS	48461
535	N0WM	02724
536	WD9IUC	53520

## 35 COUNTRIES

CERT#	CALL	10-10#
297	WB4FBS	48461
298	KK5DO	65027
299	K4RL	01568
300	WD9IUC	53520

## 45 COUNTRIES

CERT#	CALL	10-10#
210	K4RL	01568
211	WB4FBS	48461

## 55 COUNTRIES

CERT#	CALL	10-10#
147	K4RL	01568

## 65 COUNTRIES

CERT#	CALL	10-10#
102	AA1KS	56510
103	N6JQI	46305

## 110 COUNTRIES

CERT#	CALL	10-10#
027	N5EJS	01525

## 115 COUNTRIES

CERT#	CALL	10-10#
024	N5EJS	01525

## OM/XYL AWARD

Pat Hibbs  
KH6OE #28842

## BASIC - 10 TEAMS

CERT#	CALL	10-10#
395	ZL3JD	61547
396	N3TF	58528
397	WB4FBS	48461
242	KC7DH	52099

## BASIC - 25 TEAMS

CERT#	CALL	10-10#
397	WB4FBS	48461
242	KC7DH	52099

## More 10-10 AWARDS

### WORKED ALL STATES

Scott Brackeen  
AIIM #23966

CERT#	CALL	10-10#
2325	N2WCY	65526
2326	K6MVN	31623
2327	AA0MZ	65232
2328	KB7RUQ	66380
2329	LU5HE	10334
2330	AB6QM	63114
2331	KC7OC	67668
2332	K7ROB	58035
2333	KJ7RF	69390
2334	N7BZD	43746

### WORKED ALL STATE CAPITALS

Paul Johnson  
N4JII #37708

CERT#	CALL	10-10#
NONE REPORTED		

### WORKED ALL STATES MOBILE

Dave Becker  
K7PRZ #47633

CERT#	CALL	10-10#
22	KA7ICF	46221
23	VE7AAP	50407
24	VE7ACM	30939
25	K9EHP	2847
26	KB9OBL	60631

### WPX (PREFIX)

#### AWARD

Bill Montgomery  
KB3GW #35517

CERT#	CALL	10-10#
NONE REPORTED		

### CW AWARD

Lee Zalaznik  
KI6OY #50948

CW#	CALL	10-10#
21	KI6OY	50948
22	W9BOK	29266
23	N5AFV	27571
24	W4GTM	66628
25	KC5BKT	64386
26	WD5HJC	21786
27	WB6JVP	63117
28	AA1KS	56510

### 50 CW CONTACTS

#### SILVER

CW#	CALL	10-10#
15	AI9L	68618

### 50 CW CONTACTS

#### SILVER

CW#	CALL	10-10#
2	W1RFW	05759
15	AI9L	68618

# XXIQ

XXIQ, the smaller but official call-number data base maintained by Data Manager WA6POZ is now available for download via ftp by a direct link from the main page (Op Aids) at the 10-10 site. Gerry will be updating the file regularly. The file is ZIPped, so you will have to unZIP it on your own PC for use.

Our thanks to Gerry and to Jim, N3VXI, the Lehigh site manager for making this possible.

-73- LB, W4RNL

## New Life Members

It is with pride that we honor the following members who have become the latest *Life Members* of Ten-Ten. You too can become a *Life Member* of 10-10. See details on page 31.

1192	N7SD	Ernest C Wachter
1568	K4RL	Robert L Plunkett
4530	N5XZ	Allen R Brier
13173	WB3AAL	Ronald J Polityka
25654	KB6JJ	Howard M Thompson
29440	KA5EWK	Robert D Schoen
36741	WB7PRS	John H Quiner II
43663	W5CS	Jimnie F Norwine
45766	N6CGE	Leon D Castle
58505	K3PT	Bobby J Manning
60124	KA1NCS	Edward R Anderson
62814	N8RRT	Chester Merritt
68935	DJ6SE	Erwin Sorof
69877	W1PXI	William H Mowbray

## New VP Numbers

as of 11/30/1998

VP#	CALL	10-10#
2972	WB2PHK	30828
2973	KJ7RF	69390
2974	N5PDQ	48664
2975	KK4TB	18813
2976	KF4AYP	67746
2977	GM2AOL	38317
2978	K7XP	46254
2979	KA3TEY	48018
2980	N0PFY	63849
2981	KB0OYA	67971
2982	KM5QK	69455
2983	DK3KD	58990
2984	WA8ETY	67621
2985	N1TSE	65471
2986	KA7CWS	50288
2987	K2BIL	68799
2988	N7WKT	63786
2989	DJ5JO	68936
2990	DF9JS	45863
2991	KG6EG	68885
2992	N2LQQ	61745
2993	KB0TFT	68306
2994	KI8AP	68316
2995	KE3QH	66581
2996	WSOWA	69714
2997	NO3PU	69097
2998	N1DO	63993

# 1998 FALL CW QSO Party Results

CALL	QSO'S POINTS		CALL	QSO'S POINTS		CALL	QSO'S POINTS		CALL	QSO'S POINTS	
TOP TEN IN THE WORLD			AREA 2 - INDIVIDUAL			AREA 6 - INDIVIDUAL			AREA 0 - INDIVIDUAL		
DK3KD	223	433	N2EOC	79	154	AC6HF	80	145	W0FNN	32	56
WA5JDU	205	287	WB2YAF	47	85	K6EHA	55	107	N0WM	27	48
K4NY	183	271	N2WCY	34	56	K0CSD	52	104	W0RTV	17	35
K7QXG	105	192	KF5UN	23	44	WA6RND	52	97	K0LWV	16	31
W9OO	85	172	W2VXH	6	12	KI6OY	24	48	WB0RHR	16	29
W7ILH	95	167	K2HLC	6	12	KE6HDS	21	43	K2HT	9	12
N2EOC	79	154	AREA 3 - INDIVIDUAL			KF6SZC	20	39	WA0FQK	2	4
AC6HF	80	145	W3EHZ	45	84	WA6VLS	12	24	AA0LM	1	2
W4SKW	90	141	W3KP	44	80	N7WLC	4	8	CHAPTER SCORES		
AE2L	78	132	WB3ABH	6	12	AREA 7 - INDIVIDUAL			POSSUM TROT	14	802
INDIVIDUAL - QRP			WA3JXW	5	11	K7QXG	105	192	STEELCITY	9	487
N9UKX	32	62	AREA 4 - INDIVIDUAL			W7ILH	95	167	NEANDERTHAL	3	474
WA6VLS	12	24	K4NY	183	271	W7IX	59	114	CITY OF LIGHTS	7	398
WA0FQK	2	4	W4SKW	90	141	AA7FK	45	91	BATTLE ROAD	8	290
DX AREA - INDIVIDUAL			AE2L	78	132	KU7K	28	56	BLUE BONNET	1	287
DK3KD	223	433	KR4OE	54	97	K7YQI	19	36	HOUSTON SHOT	5	231
VK2FHN	60	124	N4ZCG	55	97	KD6VLN	9	17	TROTTERS AND PACERS		
PY2DBU	24	72	W4GTM	34	60	K7PRZ	5	9		3	210
BV/JH3GCN	64	68	KE4DEV	29	55	W7LBK	1	1	ARIZONA DESERT		
KH7B	31	63	KZ3T	25	51	AREA 8 - INDIVIDUAL				2	203
ZL1LE	28	62	KU4W	23	46	W8JSM	65	115	PORTLAND 500	1	192
JA1AZS	32	51	KE4YBS	19	38	W8PJY	24	44	C.A.T.T.	3	169
VE5BCS	22	50	N4ERM	19	37	W8LBQ	5	10	GOLDEN BEAR	1	145
ON4EE	21	35	KE1HO	18	36	AREA 9 - INDIVIDUAL			BAUXITE	3	119
ON4CAS	10	27	AD4RX	16	34	W9OO	85	172	PINE STATE	1	103
DF7QK	12	22	AA4PR	17	34	WA9TPQ	64	118	CITY OF ROSES	2	100
DJ2YE	9	19	KL7NL	18	33	AK9Y	60	103	WIND FARMS	2	91
AREA 1 - INDIVIDUAL			N4EWG	16	33	W9AX	47	88	CHESAPEAKE BAY		
AA1KS	70	130	KJ4RV	15	29	AI9L	46	84		1	80
W1LIC	55	103	N3DZC	16	26	W9VA	40	72	ALII	1	63
W1RFW	50	102	K4RL	9	20	N9UKX	32	62	DOWN UNDER	1	62
KD1YN	39	69	W4TBO	10	20	W9BOK	25	50	MO-KAN TENNERS		
W1MXI	27	54	KF4LLL	6	12	WA9OFH	25	48		2	60
KC1FV	9	19	AREA 5 - INDIVIDUAL			WA9TWE	24	47	CRATER LAKE	1	56
KA1YHI	8	16	WA5JDU	205	287	ND9Y	21	36	GATEWAY	3	54
K1IEQ	6	12	W5RAN	92	122	W9IAI	18	31	MULE TOWN	1	38
WA1DUZ	6	12	WD5HJC	35	65	N9FA	12	23	BORINAGE	1	35
W1SIX	3	6	N5AFV	25	48	KE9WZ	11	23	SUNCOAST	1	34
			KA9IKK	20	40	KD9XP	11	23	TWIN TIERS	1	12
			AA5XQ	15	28	NA9A	9	18	CRADLE OF LIBERTY		
			KC5BKT	13	26	KB9RTM	7	11		1	11
			W5EFB	12	21	KB9OBL	5	10	CHANNEL ISLANDS		
			N5MT	10	20	KB9GVY	3	6		1	8
			NM5H	10	20				LILAC CITY CHAPTER		
										1	1



# 1998 SPRINT Results

CALL			QSO'S POINTS			CALL			QSO'S POINTS			CALL			QSO'S POINTS		
TOP TEN OF THE WORLD						CENTRAL AMERICA						AREA 5					
LU6HSV 418 1005			HR1HCP 25 69			KF4RKQ 26 52			AA7FK 124 227								
WB4FBS 553 1000						K4IJK 15 32			KD6VLN 92 165								
VE7NF 312 794			QRP			KB4BYH 12 24			WB7TIR 70 141								
K5GAY 450 761			WB5IIE 133 245			K4TSY 9 17			N7JCZ 70 140								
N9PQU 436 733			N0ZNA 63 129						N7VS 43 83								
K7QXG 394 694			CLUB						KK7LU 41 78								
AB6YQ 367 658			NM5H 259 462			WB4FBS 553 1000			KD7BVL 24 49								
KF6JFG 343 603			VE7WPC 9 24			N5MT 259 462			KA7CWS 25 45								
KC7OC 312 574			VE7EMO 1 3			KA5VVD 221 380			KC7FTH 20 35								
WB6NFO 322 569						KC5BKT 137 267			KR7RK 4 7								
TOP U.S. CALL AREAS						AREA 1						AREA 8					
1-KE1IU 193 333			KE1IU 193 333			AC5OY 54 107			N8KOJ 172 310								
2-N2EOC 293 527			NN1J 179 325			KM5FF 57 105			WB8NLL 74 138								
3-N3TGB 42 86			K1UR 92 165			W5CJZ 38 80			KC8KBF 74 138								
4-KE4HRH 191 342			KD1YN 90 164			N5YM 36 75			KB8OKK 58 112								
5-WA4FBS 553 1000			W1SIX 46 94			WX5I 28 60			W8PJY 47 84								
6-AB6YQ 367 658			W1RFW 42 70			W5EPR 32 59			WA8IEK 23 46								
7-K7QXG 394 694			N1UKX 36 69			KK5XK 33 58			N8WTH 16 33								
8-N8KOJ 172 310			W1LIC 35 68			W5EIJ 24 48			AREA 9								
9-N9PQU 436 733			AREA 2						N9PQU 436 733								
0-K5GAY 450 761			N2EOC 293 527			K5UCQ 24 46			W9OO 229 430								
CANADA						KF5UN 221 400			KB9JIF 219 377								
VE7NF 312 794			N2LQQ 43 84			AB6YQ 367 658			N9RZQ 129 229								
VE7ACM 45 126			KA2SKO 40 75			KF6JFG 343 603			KB90BL 121 221								
VE5KM 35 68			KC2BQF 26 55			WB6NFO 322 569			KE9WZ 57 118								
VE7AAP 7 20			AA2KJ 26 50			K6VMN 319 566			KB9RTM 50 95								
VE5BCS 6 9			AREA 3						N9UKX 45 91								
GERMANY						N3TGB 42 86			N9AVY 36 75								
DK3KD 90 154			NA3H 41 73			AC6HF 215 387			K9KKX 27 51								
DL1ECG 43 73			W3EHZ 35 70			W6KVA 209 385			WA9SFH 26 50								
DJ2YE 37 71			KA3VDN 39 69			N6XD 211 375			N9VOK 12 24								
DJ6DO 28 53			N3WYX 37 68			KJ6JO 121 219			AK9Y 1 2								
ARGENTINA						WB3BMA 32 61			AREA 0								
LU6HSV 418 1005			K3NBD 20 40			AC6PX 109 200			K5GAY 450 761								
LU5HE 226 514			KA3NMB 19 38			N6TXT 75 141			K0DVY 162 303								
JAPAN						WB6YNM 55 106			K0JPW 126 267								
JA5GPJ 80 203			K3ZNB 6 14			WB6YVLS 50 95			W0RTV 109 211								
JH3GCN 81 123			AREA 4						W0FNN 73 141								
JH1UUT 31 79			KE4HRH 191 342			KF6BIR 44 82			N0SYU 42 103								
AUSTRALIA						KE6RQQ 34 66			N0XL 48 101								
VK2FHN 169 422			K4CIH 128 239			KE6DSQ 31 63			KB0WPY 54 92								
NEW ZEALAND						NV6I 28 52			W0DRV 41 85								
ZL1LE 40 101			WA2YZM 116 210			KI6G 20 40			KB0TFT 37 75								
HAWAII						K7QXG 394 694			WA3COS 29 61								
KH7B 50 91			KT4XA 78 140			K7OC 312 574			N0CUN 25 53								
						KJ7WK 254 457			KC7KDZ 28 51								
						KC7DH 270 453			KB0RQE 24 48								
						K7GQ 210 393			WB0GGO 21 41								
						N7HDB 174 339			K0LWV 14 32								
						KF7PU 136 253			K5ERJ 15 29								
						KD6FIB 130 246			N0WM 12 24								
						WA0FQK 10 20											
						KA0EIC 7 18											
						AA0LM 3 6											

# REPORT TO WORLD RADIO

By Chuck Imsande, W6YLJ

**10-10 Convention** – The 10-10 Board of Directors have announced that the 1999 Biennial Convention will be held in Oak Ridge, Tennessee, June 10-13, 1999. The Convention Chairman is Jim Whittlesey, KC4RHW #57051. The Host Chapter is the Springbok Chapter and the Convention will be held at the Garden Plaza Hotel. Although the convention is still several months away, it is never too early to start planning that perfect vacation in the Great Smoky Mountains, the Cumberland Plateau, and the Knoxville-Oak Ridge-Gatlinburg-Sevierville-Pigeon Forge area. Among area attractions are the Atomic Museum, Ten-Tec, Dollywood, and the University of Tennessee. If you like nature, history, or fun, plan your 1999 vacation around the 10-10 Convention in Oak Ridge, Tennessee.

Pre-Registrations are now being accepted and a pre-registration form is available on the 10-10 Web Site. A pre-registration form and additional information is available by mail from Tom Henderson, K4CIH #33233, 4901 15th Place East, Tuscaloosa, AL 35404-4522.

**New Worked all Continents Manager** – The Operations Committee has announced the appointment of Richard "Dick" Corlew, NC6V #25057 as the new 10-10 Worked all Continents Manager. Dick is a long time 10-10 member and is the Certificate Manager (CM) for the Busy Bee Chapter. Send all Worked all Continents (WAC) applications to: Dick Corlew, NC6V #25057, 3213 Carolyn Circle, Oceanside, CA 92054. An application form for the WAC Award is available from Dick at the above address for an SASE.

**10-10 DX** – Conditions on 10-meters have improved all over the world as the solar flux climbs upwards. Recently our 10-10 International News DX Editor, Mike Davidson, N5MT #24949, found a new first time DX country, Eritrea, Africa, prefix E3. The first ever 10-10 activity from E3 was given out by Vance, N5VL #63352 (es W5IJU), Joe KO4RR #46176, Larry, NF6S #51807 and Elvira, IV3RSG #54292. They were all a part of the WD4NGB Dxpediton in November 1998. Eritrea continues to have a border problem with Ethiopia but tensions have subsided and Amateur Radio licenses are being issued. The group made a total of 35,412 contacts with 5894 on 10-meters. Further information and logs can be checked at the web site: <http://qsl.net/eritrea>.

Mike advises that with Eritrea becoming a 10-10 Country, he now has a total of 291 countries that have transmitted 10-10 numbers. 10-10 is truly a worldwide organization!

**Special Canadian Prefixes** – Canadian Amateurs were authorized to use the following special prefixes during the month of December 1998:

VE1-9 could use CG1-9

VA2-3 could use CF2-3

VO1-2 could use CJ1-2

VY1-2 could use CK1-2

If you worked any of these special prefixes during the month of December 1998, they will count as a new prefix for the 10-10 prefix award. Two very active 10-10 members,

Garry, VE7ACM #30939 and Janis, VE7AAP #50407 were known as CG7ACM and GC7AAP during the month of December.

**New DX Members** – 10-10 continues to grow in the DX world. The following became 10-10 DX members during the month of November 1998:

M0BPL #70100, IZ8CCW #70101, DL0TEN #70102, IK8WEJ #70103, IZ8BGY #70104, LU7HN #70105, ON4KVA #70106, DL6EG #70107, DF0GZ #70108, ON6ZK #70109, DL2CHN #70110, DH2RTW #70111, HB9CEX #70112, VE4MAR #70113, PA3GXV #70114, DK0DSW #70115 and VE7IT #70116.

We welcome these 17 new DX members into 10-10. As conditions continue to improve, watch for these new DX members and welcome them into 10-10.

**10-10 Web Site** – For you that have not visited the 10-10 web site, here is some additional information to that presented in the last column about our ever growing web site. First, to access the 10-10 web site, the address is: [www.ten-ten.org](http://www.ten-ten.org). In addition to discussions relative to becoming a 10-10 member, there are a number of links to other amateur radio sites of interest to 10-10 members. Some of the other useful features of the 10-10 web are: On-Line Call Sign Look-up, 10-10 Number Look-up, World-Wide 10-Meter Beacons and FCC Database and Search Program. There is also a USA State-to-County Map that lists all counties in each state. This link is provided as a service of the Steel City Chapter of 10-10.

As a new member service, the 10-10 program to search either a 10-10 number by call or a call by 10-10 number is now provided at no charge on the web. This official 10-10 data base, known as XXIQ, was formally only available by purchase from 10-10. It is now available as a member service at no charge as a download ZIP file.

If you have not visited the 10-10 web site, please do. The address again is: [www.ten-ten.org](http://www.ten-ten.org).

**10-10 Nets** – Remember that 10-10 holds two daily "nets" at 1800Z. One net meets on 28.380 and the other meets on 28.800. With the improved conditions we are experiencing you should be able to hear most of these daily nets where ever you reside. The 10-10 nets meet six days a week – Monday through Saturday. Listen in on either 28.380 or 28.800 at 1800Z and check in if you can hear the net control stations. Non-members are welcome to check in and it is a great way to accumulate your ten 10-10 contacts to qualify for membership.

**Information about 10-10?** – If you would like information about 10-10, and how you can become a member and receive your very own unique 10-10 number. Send \$2.00 and an address label for the return of your information package to: Jeff Ritter, N5VAV #59692, 10-10 Information Manager, 6959 Hovenkamp, Richland Hills, TX 76118. No SASE please as the information package requires a 9 x 12 envelope. You will receive a copy of the 14 page Prospective New Member Brochure which contains everything you want to know about the 10-10 organization, a listing of all 10-10

(Continued on page 27)

# 10-10 SILENT KEYS

It is with sorrow that we note the following 10-10 members who are now SILENT KEYS. We extend our sincere condolences to the families and friends of these SK members whose calls and 10-10 number will forever be kept in the records of the 10-10 Net.

## SILENT KEYS - Sept., Oct., Nov. 1998

00466	VE3AMP	J. N. Cook	Lutz, FL
01565	K1ESN	Joseph J. Syrek	South Hadley, MA
03127	K4CKA	James M. Whittenton	Winston-Salem, NC
04011	WB4KMI	Alonzo L. DePorter	Oakdale, TN
04805	WA8AXQ	Charles M. Williams	Cincinnati, OH
04921	W4IPP	Allen Smith	Lexington, NC
05334	W9DOW	Erwin H. Peters	Sharon, WI
06473	K8TTY	Walt W. Wright	Coldwater, MI
06484	WA7KQE	Elden L. Kirchhoff	Buckeye, AZ
06684	K3UWJ	Paul J. Eck	Williamsport, PA
07223	W9COG	Charles Clemans	Oshkosh, WI
07413	W8DWJ	Edmond Casey	Cincinnati, OH
08073	W9CZI	Jerrold L. Colten	South Bend, IN
10159	W2HXJ	Lowell C. Bellingham	Holmdel, NJ
10243	W4ZUP	Howard G. King	Sheffield, AL
10252	K4YL	Cresson F. Donbar	Bradenton, FL
10282	K5LUG	John E. Martin	El Paso, TX
10359	W7YQ	Carl W. Moore	Sun City, AZ
11338	W8DTI	Albert L. Thomson	Wyoming, MI
12452	WA4IUL	Joseph T. Mills	Columbus, GA
14225	K5TGE	Joseph J. Sarno	Arlington, TX
16071	K0ZZT	Russell A. Krueger	Rochester, MN
16430	WA4TQE	John Valk	Cleveland, GA
16773	KB3BC	James A. Pcploc	Susquahanna, PA
17365	W6PYK	Paul A. Scholz	Cotati, CA
17453	W7NXZ	David L. Sather	Lewistown, MT
17821	WA1WMS	Willis G. Lyman	Ipswich, MA
18098	WQ0N	Mike R. Krami,	St. Charles, MO
20327	KD5TP	Phil Grippin	Bowie, TX
21088	AA4G	Joe A. Richard	St. Petersburg, FL
21096	WA4DWD	Robert W. Maibauer	Crescent City, FL
23852	WB0PLS	Hal Quiat	Golden, CO
23902	N1AJ0	Thomas E. Child	Dedham, MA
24737	N4BEQ	Frank E. Szubka	Crystal River, FL
27634	KC2AR	Robert A. Case	Starrucca, PA
27695	WB2JMK	John W. Donaway	Lewes, DE
28739	W3ZLK	Ira G. Groff	Burgettstown, PA
28786	W3YLI	Harold L. Anderson	Eric, PA

29085	N7BQE	Paul M. Jacobs	Kanab, UT
29333	WA2ALW	Kenneth D. Robinson	Churchville, NY
31071	W5VNB	George A. White	Richmond, TX
31082	KD5YL	H. C. Mitchell	Waco, TX
31133	KA9ACS	Charles L. Wertz	Antioch, IL
31162	W9ZCN	David B. Pivan	Northbrook, IL
31167	W7LSB	Nathaniel H. Prade	Bremerton, WA
33023	KV0X	William A. Echel	St. Louis, MO
33783	K6TEH	Cliff Wiley	Salinas, CA
33961	W1EZR	Bernard R. Langley	Poland, ME
35272	W4WB	Kenimer H. Morgan	Williamsburg, KY
38164	KA8HNB	Samuel Bernstein	Cincinnati, OH
38814	KA4WZD	Leroy Bell	Montgomery, AL
39281	KE5GN	Joseph M. Cristol	Portland, TX
39848	W9STR	Betty Sandberg	Chicago, IL
39869	W9ODI	Charles R. Parmelee	Mundelein, IL
40241	VE3NGR	Henry M. Hogan	Harrow, ONT
40736	KK4WB	Jean Smitha	Tequesta, FL
41530	N6NXT	Anthony R. DiGiovanni	San Clemente, CA
41537	WB6ZJM	Paul C. Tamas	*Los Angeles, CA
41864	WA4CRO	John M. Long	Hixson, TN
42374	KA9ULN	Vincent S. Cook	Huntertown, IN
44151	N3FLY	Paul H. Sell	Fairfield, PA
44482	N9JZB	Randall D. Tvedt	Mt. Horeb, WI
44780	K4POV	Frank E. Dawson	Boones Mill, VA
45900	WB3KJG	Lawrence Polcsnak	Pittsburgh, PA
46070	KA0UYN	Luther R. Yates	Princeton, MO
46372	N6SFM	Frank R. Troutt	Oxnard, CA
50511	W3SG	Charles M. Allen	Jessup, MD
55008	KG1Q	Joseph N. Fish	Rutland, VT
55012	W1RD	William A. Martin	Harwich, ME
55332	KC6IDF	John J. Miles	Tustin, CA
56655	KB8FS	Gary W. McClary	Pataskala, OH
57392	W9NVO	Michael G. Ringley	Richmond, IN
57783	W8KTV	Roslyn R. Appel	Cleveland, OH
61606	N1KPT	Richard Chapin	Henniker, NH
61678	K1GAO	Kevin T. Higgins	Easton, ME
61852	KD4CVP	Harry D. Hasty	Nashville, TN
63776	K7UAAQ	George D. Farrar	Grants Pass, OR
64836	N8WOR	James Phillips	Ocala, FL
65392	KB9IPZ	Jackson J. Bush	Green Bay, WI
65962	WA8HFC	Elmer R. Paulitzky	Cleveland, OH
66762	NE2U	Howard D. Blakeslee	Binghamton, OH
66805	KG0TM	Dean A. Dungan	Denver, CO
69129	N1ZOH	David T. Brown	Somers, CT

Please send silent key information to Grace Dunlap, K5MRU

Box 445, LaFeria, TX 78559 (K5MRU@aol.com)

Please include sk's name, call, 10-10 no., city & state or country

## REPORT TO WORLD RADIO

(Continued from page 26)

Chapters, their day, time, and frequency of net operation and an application form. Also enclosed will be a copy of the 8 page QSO Party Information Brochure and a copy of the latest issue of the 10-10 International News, the 32 page 10-10 quarterly magazine.

If you have lost, or forgotten, your 10-10 number, send the same as above to Jeff and you will get the information package along with your original 10-10 number.

If your membership in 10-10 has expired and you would like to renew your dues, send your dues (\$10.00/year or \$25.00 for 3-years) to: 10-10 International Net, Inc., Attention: Dues Renewal, 643 N. 98th Street #142, Omaha, NE 68114-2332. You will become an "ACTIVE" member again and receive all of the benefits of 10-10 including the quarterly 10-10 International News. Remember 10-10 numbers are issued for life and your originally issued number is always yours.

# 1999 10-10 Biennial Convention

The Board of Directors of Ten-Ten is pleased to announce the selection of OAK RIDGE, TENNESSEE, as the site of our 1999 Biennial Convention. It will be held the weekend of June 10 - 13, 1999.

The Convention Chairman is Jim Whittlesey, KC4RHW, and the host group is the Springbok Chapter International (South Africa).

The Garden Plaza Hotel, Phone 423 481 2468 is the location of all events, and should fit our needs perfectly.

Available info to date below as to rooms, camp sites, tours, chapter area, forums, etc.

## **- CONVENTION STAFF -**

### **Chairman**

Jim KC4RHW

### **Registration and SCI Information Coordinator**

Phyllis KF4CKB

### **Registration and SCI Information Tables:**

Peter G4YNO

Chely KD4ATO

Wallace KE4CRU

Allen WA4YSJ

Doug N1CWR

Gene KB4UMM

Ken KE4YBY

Dennis WB4NBE

Jay KD4AYU

### **Transportation:**

Jay KD4AYU

Doug N1CWR

Gene KB4UMM

Ken KE4YBY

Dennis WA4NBE

### **Ladies Activities - Adel SW of WA4NBE**

E-mail co-ordinator - Carl W9OO

### **Public Relations Officers**

Steve KC4LOR & Richard KC4YEA

### **10-10 Director, Chmn of the Planning Committee**

Peter C. Matson

KC1CP, 37190 (Life Member)

73 S. Edgewood Road

Niantic, Ct. 06357-2036

### **Information**

Dates: June 11, 12, and 13 - 1999

Location: Garden Plaza Hotel 215 S. Illinois Ave Oak Ridge TN. 37830 Phone (423) 481-2468

The 1-800 number for the Garden Plaza Hotel is 1-800-342-7336. It is through the Memphis Reservation Center for the Garden Plaza Hotels. Be sure to tell them you are making reservations for the 1999 10-10 convention for June 1999 But the best way to make sure you get your reservations is to call the Hotel direct.

A Phone number will be given at a later date to those who will be flying in to call for transportation to the hotel. Transportation will be provided (free service) by the Host Chapter.

A Pre-Registration Form, for use after January 1, 1999, is available from 10-10 Int.Net.

A schedule of events will be posted about the first of the year.

The E-Mail address for the convention will be (FOR THE CONVENTION DATES ONLY ) c/o Carl W9OO tenten-TN@webtv.net

Major Air Port is McGhee Tyson, Full jet service, distance from Air port to Oak Ride 30 miles Several camp sites are close by with the best at TVA

Milton Hill Dam 8 miles from the Hotel, there are 8 restaurants within walking distance of the Hotel.

McGhee Tyson airport has a web page. This lists all of the airlines that fly into Knoxville and other info you might find useful.

Latest Convention Notes: The Hotel now has over 30 reservations on the books for next year, They can not put them on the master computer until June of this year as their computer will only let them take things one year in advance, they are confirming reservations through the sales office. For those wishing to camp with RV's or what ever there is the Crosseyed Cricket Camp grounds about 12 miles from the Hotel and The TVA Melton Hill dam camp grounds about the same distance as they are only about 2 miles from each other

### **THE CROSSEYED CRICKET**

751 Country Lane

Lenoir City TN. 37771

Phone (423) 986-5435

### **TVA RECREATION**

P.O. Box 1589

Norris TN. 37828-2009

Phone (432) 988-2440

*(Continued on page 29)*

*(Continued from page 28)*

New camp site added to Convention list, which just might be the best and easiest to use for the convention for those wanting to come with RV's

THE NEW FOX INN CAMPGROUND  
OFF I-75 AT HWY 61 EXIT 122 1000 FEET  
13 MILES FROM OAK RIDGE ON HWY 61  
FULL HOOK UPS PULL THROUGH SITES  
FOR RESERVATIONS CALL 1-423-494-9386

OR WRITE:

THE NEW FOX INN CAMPGROUND  
RT # 1 BOX 210-1  
CLINTON TN. 37716

For information on sites:  
PLEASE SEND AN SASE to me marked  
CONVENTION CAMPING INFO

There are several other camping areas but a little to far out from Oak Ridge TN.

So far the convention is shaping up real good, Reservations are already coming in at a fast clip, I hope to see many of you here as we are planning to have a Fantastic Convention, With a lot of things on the old drawing board and plans for the Ladies who will be coming with their OM

We are pleased to welcome to our Convention Committee Carl W900 who will list all convention happenings about the convention to the 10-10 list for those that will not be able to attend, such as net times and just what is going on at the convention. He did an excelent job at the IA convention.

Please add KE4YBY Ken to the convention Staff under Transportation and Information ( his SCI # 1902 and lives about 2 blocks from me ) Also add KC4LOR Steve and KC4YEA Richard as Public Affairs and G4YNO Peter Informaton.

I hope this has answered some of the major questions ask, please watch this page for further information.

**REMEMBER - THIS IS THE LAST  
CONVENTION OF THIS CENTURY...**

Take Care TTUL God Bless  
73 Jim KC4RHW CM/SCI  
1999 10-10 Convention Chairman.

# **SPRINGBOK CHAPTER UPGRADE CHANGES**

As of January 15th 1999 The Springbok Chapter Area Managers will start doing ALL UPGRADES FOR THEIR AREAS. All requests for upgrades for the following Awards will be sent to your area Managers, We feel this will speed up the upgrade process for all areas and turnaround time for upgrades.

SPRINGBOK CERTIFICATES AND BASIC SEALS  
WAS AWARD - WAC AWARD - RAINBOW AWARD  
AND SEALS - YL/OM AWARD - CHEETAH AWARD -  
KC4RHW AWARD AND BARS - CITYS OF SOUTH AFRICA AWARDS AND SEALS - GOLD BARS - KRUGER AWARD AND SEALS.

**- AREA MANAGERS -**

**AFRICA (TEMPORARY)**  
ZS6NB KEN PICKERSGILL  
60 SELBORNE AVE  
LUTTELTON MANOR  
VERWOERDBURG 0157  
SOUTH AFRICA

**NORTH, CENTRAL, SOUTH  
AMERICA CARIBBEAN, ALASKA  
AND HAWAII**  
KC4RHW JIM WHITTLESEY  
612 REDBUB LANE  
OLIVER SPRINGS TN. 37840

**U.K. EUROPE**  
G4YNO PETER BARNES  
69 SOUTHBOURNE OVERCLIFF DRIVE  
SOUTHBOURNE, DORSET BH6-3NN  
ENGLAND

**OCEANIA AND ASIA**  
VK6PP TONY GEORGE  
11 MANXTON WAY  
LYNWOOD W.A. 6147  
AUSTRALIA

**PLEASE MAKE OUT ALL MONEY ORDERS AND CHECKS  
TO YOUR AREA MANAGER AND NOT  
TO SPRINGBOK CHAPTER INTERNATIONAL.**

Thank you and we hope to see many of you at the 10-10 International Convention here in Tennessee next June 10-13 1999.

# 10-10 AWARD INFORMATION

To apply for any 10-10 Award, **Proof of paid-up membership is mandatory.** A copy of your membership card or address label from the latest copy of the **10-10 International News** must be sent with your application.

An application listing the rules for each award is available from the Awards Managers listed below. Please send a request with a #10 (business size) envelope, stamped, self-addressed, with one unit of first class postage to the Award Manager for the Award you are interested in obtaining. Please no phone calls to Award Managers for an application or list of rules.

## BAR AWARDS

Work 100 10-10 members on the air and exchange call, name, location and 10-10 numbers. List these 100 numbers in numerical order, along with call sign, name, QTH (State or Country), and date of contact. The BAR Awards do not require an "official" application form, just a list as noted above. Send BAR applications with an SASE to the following BAR Managers:

### BAR APPLICATIONS 100-900

Dan Morris, KZ3T # 41015  
112 Royal Oak Court, Lenoir, NC 28645

### BAR APPLICATIONS 1000+

Allen Mattis, N5AFV #27571  
5314 Wigton Drive, Houston, TX 77096-5115

## CERTIFICATE OF AWARD

A *Certificate of Award* is available when attaining the 1000, 2500, 5000 (and for each additional 2500) BARS at a cost of \$2.00 plus two first class stamps. Send your *Certificate of Award* application to the 1000+ BAR Manager. (Note: Plaques have been replaced by Certificates. Plaques are no longer available.)

## INTERNATIONAL 500 OF THE WORLD

With the 500 BAR comes an Honorary VP Number, membership in **International 500 of the World**. A certificate is available for the International 500 of the World for \$1.00 plus 2 first class stamps. Once the 500 BAR is attained, you may go after the following awards:

## VP BAR AWARD

Contact 100, 200, etc. 10-10 members with a VP Number and submit a list in numerical order, VP#, 10-10 #, call, name, QTH, and date of contact. See the VP Bar rules on the Tenten-I web page or send an SASE for rules to the Award Manager. Send your list, along with 2 first class stamps to:

Carl Fisher, W0HIK #40678  
5 Angelina Drive, Augusta, KS 67010-2262

## LUCKY 13 CERTIFICATE

Dan Morris, KZ3T # 41015  
112 Royal Oak Court, Lenoir, NC 28645

## VP WORKED ALL STATES

Carl Fisher, W0HIK #40678  
5 Angelina Drive, Augusta, KS 67010-2262

## CONTINENTS AWARD

Dick Corlew, NC6V #25057  
3213 Carolyn Circle, Oceanside, CA 92054

## COUNTIES AWARD

Hank Richroath, K5HWI #63313  
1004 S Howeth Street, Gainesville, TX 76240-5904

## COUNTRIES AWARD

Russ Gauthier, N5EJS #1525  
8816 HWY 165, Pollack, LA 71467

## CW AWARD

Lee Zalaznik, K16OY #50948  
334 Olivina Avenue, Livermore, CA 94550

## MOBILE AWARD

Dave Becker, K7PRZ #47633  
PO Box 3346, Portland, OR 97208

## OM/XYL AWARD

Pat Hibbs, KH6OE #28842  
4603 Glenna Way, Louisville, KY 40219-2814

## WORKED ALL STATES AWARD

Scott Brackeen, A11M #23966  
93 County Road #2371, Booneville, MS 38829

## WORKED ALL STATE CAPITALS

Paul Johnson, N4JII #37708  
2311 CCC Road, Dickson, TN 37055-4230

## WPX (PREFIX) AWARD

Bill Montgomery, KB3GW #35517  
PO Box 7183, Las Cruces, NM 88006

## WORKED ALL GREAT BRITAIN COUNTIES & REGIONS

Mike Crawshaw, G4BLH #18446  
50 Kibble Grove, Brierfield, Nelson  
Lancs, England BB9 5EW

## STAY ACTIVE IN 10-10

**CHECK YOUR ADDRESS LABEL ON  
PAGE 32 (BACK COVER) FOR YOUR  
DUES EXPIRATION DATE**

**RENEW TODAY IF YOUR DUES ARE DUE**

# Membership Information and Services

The following information is supplied to provide a ready reference on how and where to send your 10-10 dues, and where to purchase items offered for sale by 10-10.

Make all checks payable to **10-10 International Net, Inc.** Please list your call and 10-10 on your check. Do not send cash. All DX are reminded that money amounts are quoted in US Dollars. DX members please pay by International Postal Money Orders

## NEW MEMBERSHIPS

New member applications should be sent to the Omaha address listed below. Dues for 10-10 membership are \$10.00 per year for members with a USA ZIP code and \$13.00 per year for DX members. You may pay your dues for multiple years. A membership application is included in the 10-10 Information Manual and in the New Member Brochure.

Mail new member applications with USA ZIP code to

10-10 International Net, Inc.  
Attention: New Member Application  
643 N. 98th Street #142  
Omaha, NE 68114-2342

Mail new member applications for all DX to

Carol Hugentober, K8DHK #29588  
DX Area Manager  
4441 Andreas Avenue  
Cincinnati, OH 45211-2622 USA

All correspondence regarding membership ~~newcomers~~ should be addressed to:

10-10 International Net, Inc.  
643 N. 98th Street #142  
Omaha, NE 68114-2342

## DUES RENEWALS

10-10 dues are \$10.00 per year or 3 for \$25.00 for members with a USA ZIP code and \$13.00 per year or \$34.00 for 3 years for members with a DX address.

All USA members (those with a USA ZIP code) send dues renewals to the following address:

10-10 International Net, Inc.  
Attention: Dues Renewal  
643 N. 98th Street #142  
Omaha, NE 68114-2342

All DX members send dues renewals to

Carol Hugentober, K8DHK #29588  
DX Area Manager  
4441 Andreas Avenue  
Cincinnati, OH 45211-2622 USA

## FAMILY MEMBERSHIPS

Family Membership consists of a primary member and one or more relatives who qualify as a 10-10 member and who reside at the same location and postal address. Family Membership run concurrently with that of the primary member. Add \$3.00 for each additional Family Member for each year. Only one copy of the 10-10 News is mailed to the primary family member.

## LIFE MEMBERSHIP

Life membership is available to USA members for \$250.00 and for DX members for \$325.00. Senior Life Membership is available for those over 65 (with proof of age) for \$85.00 US members and \$100.00 for DX members. You must be 65+ to apply for Life Membership. Family Life Membership is available for \$75.00. Family life membership ends when the regular member becomes an SK. Send all life membership applications to:

10-10 International Net, Inc.  
Attention: Life Membership  
643 N. 98th Street #142  
Omaha, NE 68114-2342

Life memberships are available on a three year payment plan. For an application for time payment Life Membership, send a #10 SASE to the address above.

## CALL/NAME/ADDRESS CHANGE

Send all change of call, name and address to the following address:

10-10 International Net, Inc.  
Attention: Address Change  
643 N. 98th Street #142  
Omaha, NE 68114-2342

## 10-10 INFORMATION BROCHURE

The 10-10 Information Brochure, an 8 page brochure of everything you would want to know about 10-10 is available for \$2.00 postpaid (USA or DX). Send your request, along with a return address label (no SASE required) to:

Jeff Ritter, N5VAV# 59692  
6959 Hovenkamp,  
Richland Hills, TX 76118

## SCHOLARSHIP DONATIONS

Donations to the 10-10 Scholarship Fund are requested from each member on an annual basis to help fund the three \$1000. 10-10 Scholarships. Your check should be made payable to the 10-10 Scholarship Fund, and should be sent to the following address:

Morrie Goldman, W6EHM #4189  
10-10 Scholarship Manager  
21518 Marjorie Avenue  
Torrance, CA 90503-6418

A Certificate of Appreciation will be sent to all who make a contribution to the Scholarship Fund.

## 10-10 STAMPS

Self-adhesive 10-10 stamps that can be used on QSL cards, correspondence and envelopes are available for \$5.00 per 144 stamps. Send your order to:

10-10 International Net, Inc.  
Attention: Stamps  
643 N. 98th Street #142  
Omaha, NE 68114-2342

## 10-10 STATIC CLINGER LOGO

The 10-10 logo with a static cling backing that will cling to almost anything. This attractive 4" x 4" logo is a solid gold background with black printing. Use on notebooks, briefcase, car windows, etc. Price: 2 for \$1.00 postpaid. Order from:

10-10 International Net, Inc.  
Attention: Static Clinger  
643 N. 98th Street #142  
Omaha, NE 68114-2342

## AWARDS & CERTIFICATE GUIDE

The official Awards and Certificate Guide of 10-10, along with complete chapter information, is available for \$6.00 USA ZIP codes and \$8.00 to DX. A monthly update is also available for \$10.00 per year USA and \$12.00 DX. Send your order to:

Brad Kimble, WA4KUP #55192  
3855 66th St. E  
Inver Grove Heights, MN 55076-2222

## 10-10 ROSTER

The complete 10-10 membership list is available in hard copy or on computer disk.

**Hard Copy Roster** - The hard copy is printed on both sides of 8-1/2" x 11" paper 3-hole punched. The roster lists 10-10 number and call. SK's are identified. It is issued once each year in January. Cost of the printed roster is \$11.00 US and \$14.00 DX postpaid. Only a limited number of copies are printed and are sold on a first come, first serve basis. Advance orders are accepted.

**Roster on Disk** - 10-10 offers two different Rosters-on-Disk. One, known as **XXIQ** will search for call if 10-10 number is known and for 10-10 number if call is known. **XXIQ** is available on 3.5" (1.44MB) disk. It will run on IBM compatible computers. The other 10-10 Roster-on-Disk is known as **XXIP** and is available only on 3.5" (1.44MB) disks. It is contained on 3 disks and requires DOS 3.3 or later and 16 MB of hard disk. This program will locate 10-10 number, call and will display Name, Address, City, State (or Country), membership status, expiration date, SK status and will print address labels. Rosters on DISK are published each quarter, in January, April, July and October.

**Cost** - Cost of **XXIQ** is \$5.00 per issue, or \$17.50 per yearly subscription US members. DX cost is \$7.00 per issue or \$25.00 per yearly subscription. Cost of **XXIP** is \$10.00 per issue US or \$13.00 DX. Roster on Disk are shipped prepaid. Order 10-10 rosters on disk from:

10-10 International Net, Inc.  
Attention: Roster  
643 N. 98th Street #142  
Omaha, NE 68114-2342

(Be sure to note which program you are ordering.)

## FCC FORM 610

The latest issue of the FCC Form 610 is available from 10-10 for a #10 SASE. Send your request and an SASE with one first class stamp to:

Jeff Ritter, N5VAV# 59692  
6959 Hovenkamp  
Richland Hills, TX 76118

# 10-10 QSO PARTY COVER SHEET

## CONTEST BOX

Please Check Contest Box

WINTER PHONE.. ☐

SPRING CW..... ☐

SUMMER PHONE ☐

FALL CW..... ☐

10-10 SPRINT..... ☐

## SCORING BOX

CONTACT TYPE	NO. OF CONTACTS	MULTIPLY BY	POINTS
WITH 10-10 Number (DX ONLY)		x 3	
WITH 10-10 Number (NON DX ONLY)		x 2	
WITHOUT 10-10 Number (DX and NON DX)		x 1	
Total QSO Party Points (Sum of 3 lines above)			

## ENTRY BOX

Please Check Entry Type

INDIVIDUAL..... ☐

CLUB..... ☐

QRP..... ☐

Chapter Assignment (if any)

Call Area or ARRL Country you operated this QSO Party from

## CHECK LIST

1. Proof of current Membership enclosed..... NO ☐ YES ☐

*This page (OR a photocopy of this page) showing your address label  
-OR-*

*a photocopy of your membership card*

2. Dupe Sheet(s) enclosed ..... NO ☐ YES ☐

3. Log in UTC Date/Time..... NO ☐ YES ☐

4. Cover Sheet enclosed ..... NO ☐ YES ☐

All Check List items must be answered YES, pertinent information in the Contest and Entry boxes must be entered, and all blanks in the Scoring Box must be filled in to be an acceptable log submittal.

**See QSO Party Calendar for contest dates  
and mailing information**

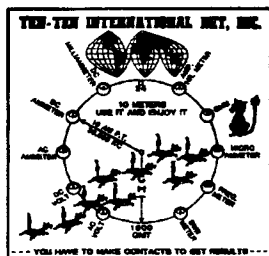
10-10 International Net, Inc.  
643 N. 98th Street #142  
Omaha, NE 68114-2342

Address Services Requested

TIME TO RENEW? EXPIRATION DATE  
IS ON MAILING LABEL BELOW

**FIRST CLASS**

PRE-SORTED  
FIRST-CLASS MAIL  
U.S. POSTAGE  
PAID  
OMAHA, NE  
PERMIT 1799



**JANUARY 1998  
(WINTER)**

\*\*\*\*\*AUTO\*\*ALL FOR ADC 530  
WALTER E FRIANT 20  
2310 S WALLONNIE DR  
MARSHFIELD WI 54449-5346

