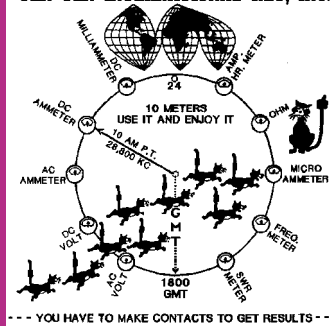


TEN-TEN INTERNATIONAL NET, INC.



# 10-10 INTERNATIONAL NEWS

Volume 42 Issue 1

\$1.50

January 2004 (Winter)

ANNIVERSARY QSO  
PARTY - NOW WE'RE  
LOOKING FOR 42's

NEW CONTEST RULES  
NOW IN EFFECT

10-10 QSL BUREAU  
ACTIVATED

MORE PICS FROM  
SAN ANTONIO

KC8IM's Antenna  
is assembled with  
busted parts. How?  
See more on page 9

## The 10-10 International News

is published four times annually by the TEN-TEN INTERNATIONAL NET, INC. Publication dates are approximately mid January, April, July and October.

Each paid-up member will receive a copy. This is an independent publication. Permission to reprint is hereby granted, providing suitable credit is shown.

News items should be sent to the Editor. Technical articles and information on all 10-meter activities or news are welcome and solicited. All copy submitted must be typed, sent on computer disk or via E-mail. Suitable formats will be provided upon request.

Photographs are encouraged. Black and White or Color are acceptable. Include complete information on the back of each photo. Attach a label or other suitable paper to the back of the photo and write all information on the label, not the photo. If sending digital images, high resolution of a minimum 300 dpi must be used. Please do not send newspaper or digitally printed photos as they cannot be used.

Please mail all articles and photos to:

**EDITOR 10-10 News**  
**Steve Rasmussen, NØWY #68684**  
**312 N 6th Street, Plattsmouth, NE 68048-1302**  
**Email: n0wy@alltel.net**



**10-10 CHAPTER ACTIVITY REPORTS** should be sent to the Chapter Coordinator  
**ADDRESS CHANGES:** Members with US Zip Codes should send address changes to the Data Manager. All other members should send changes to the DX Area Manager.

**NOTE: 10-10 IS NOT RESPONSIBLE FOR POSTAL SERVICE DIFFICULTIES**

**DEADLINE FOR NEXT ISSUE: 1 Mar 2004**

Member  
**AMATEUR RADIO NEWS SERVICE**



## OFFICERS, DIRECTORS AND NET OFFICIALS

Award Managers listed on Pg 23 - Membership Information listed on Pgs 30-31

### President

Chuck Imsande, W6YLJ #19636  
 20815 Desert Sands Dr., Sun City West, AZ 85375-5443  
 (623) 214-8788 .....chuck@w6ylj.com

### Vice President

Michael P. Elliott, K7BOI #54625  
 11286 West Hickory Dale Dr., Boise, ID 83713-1028  
 (208) 376-3458 .....k7boi@cableone.net

### Secretary

Dick Corlew, NC6V #25057  
 3213 Carolyn Circle, Oceanside, CA 92054  
 (760) 757-9284 .....nc6v@cox.net

### Treasurer

Keith Schlottman, KR7RK #63324  
 9581 E. Calle Cascada, Tucson, AZ 85715-5819  
 (520) 290-5883 .....kr7rk@prodigy.net

### Directors

Linda Barnes, KJ4FM #43299  
 310 Sequoyah Drive, Kingsport, TN 37660-3742  
 (423) 378-3082 .....kj4fm@chartertn.net

Larry Berger, WA2SUH #00407  
 9 Nancy Blvd., Merrick, NY 11566-3119  
 (516) 223-4611 .....wa2suh@aol.com

Bill Marple, AA7ZW #62075  
 5075 N. Chieftan St., Las Vegas, NV. 89149-2513  
 (702) 395-1327 or cell phone (702) 501-6332 .....aa7zw@arrl.net

Jack Moore, K5CC #50708  
 371 Ridge Creek Lane, Bulverde, TX 78163-2871  
 (830) 885-2194 .....k5cc@gvtc.com

Steve Rasmussen, NØWY #68684  
 312 N. 6th Street, Plattsmouth, NE 68048-1302  
 (402) 296-4434 .....n0wy@alltel.net

Ed Redwine, K5ERJ #11843  
 9 Yellowrose Lane, Augusta, KS 67010-2230  
 (316) 775-5700 .....k5erj@aol.com

Cliff Taylor, K5FBS #48461  
 22707 Red Mountain Dr., Elmendorf, TX 78112-6034  
 (210) 621-2741 .....catk5fbs@aol.com

Joe Williams, WA9TSG #310  
 PO Box 511092, Milwaukee, WI 53203  
 (414) 263-3618 .....jwilliams34@wi.rr.com

### Certificate Manager

Ruth Bartholomew, NØKDB #48715  
 HC 72 - Box 102A, Sullivan, MO 63080-9204  
 (573) 468-2898 .....n0kdb@fidnet.com

### Chapter Coordinator

Cliff Taylor, K5FBS #48461  
 22707 Red Mountain Dr., Elmendorf, TX 78112-6034  
 (210) 621-2741 .....catk5fbs@aol.com

### Contest Manager

Steve Rasmussen, NØWY #68684  
 312 N 6th Street, Plattsmouth, NE 68048-1302  
 (402) 296-4434 .....n0wy@alltel.net

### Data Manager / Supplies

Data Manager, 10-10 International Net., Inc.  
 PMB 142, 643 N 98th Street, Omaha, NE 68114-2342  
 (402) 891-2481 .....wa6poz@arrl.net

### DX Area Manager

Carol Hugentober, WA8YL #29588  
 4441 Andreas Avenue, Cincinnati, OH 45211-2622 USA  
 (513) 661-5323 .....wa8yl@juno.com

### Editor 10-10 International News

Steve Rasmussen, NØWY #68684  
 312 N 6th Street, Plattsmouth, NE 68048-1302  
 (402) 296-4434 .....n0wy@alltel.net

### General Counsel

Dave Splitt, KE3VV #69831  
 6111 Utah Avenue NW, Washington, DC 20015-2461  
 .....davidsplitt@erols.com

### Net Manager

Bill Marple, AA7ZW #62075  
 5075 N. Chieftan St., Las Vegas, NV. 89149-2513  
 (702) 395-1327 or cell phone (702) 501-6332 .....aa7zw@arrl.net

### Scholarship Manager

Larry Berger, WA2SUH #00407  
 9 Nancy Blvd., Merrick, NY 11566-3119  
 (516) 223-4611 .....wa2suh@aol.com

### SK Manager

Ruth Bartholomew, NØKDB #48715  
 HC 72 - Box 102A, Sullivan, MO 63080-9204  
 (573) 468-2898 .....n0kdb@fidnet.com

### W6OI Station Trustee

Jack Moore, K5CC #50708  
 371 Ridge Creek Lane, Bulverde, TX 78163  
 (830) 885-2194 .....k5cc@arrl.net

### Webmaster

Darwin Piatt, W9HZC #73090  
 10532 Larimore Circle, Omaha, NE 68134  
 (402) 991-0412 .....dw-piatt@cox.net

## HOT OFF THE PRESS

Steve Rasmussen NØWY #68684  
Editor 10-10 News



As the old adage goes, nothing is more certain than change, or something like that anyway. Change we have. A QSL Bureau for 10-10 members, new webmaster, new contest rules and all that goes with them. The board has had their work cut out for them this year with all those changes and I know there are other things in the works too. As they say...more to come!!!

How many of you got some new radio equipment for Christmas? I haven't heard anything concrete yet, but I am sure with the spring there might be a few better stations on the air with new antennas, radios or amplifiers.

I didn't get anything new for the shack, but I did get a new digital camera. This one is five megapixel and will do just about everything a standard SLR camera will do. I can even change the f-stop or shutter speed. And with five megapixels I can take a picture with enough data that it can be used full sized on the front page of the NEWS.

Did you get a new regular or digital camera for Christmas? I would love to see a picture of your shack or your antenna. Who knows, it may very well end up in the NEWS. If you send a regular photograph, make sure you write information about the picture on a piece of paper and include it in your envelope. Don't want to send the print and have scanning capability? Scan the picture at a minimum of 300 dpi and e-mail it to me. If you want to send me a digital picture, make sure you take it with the HIGHEST resolution you can and e-mail that to me. I can always reduce the size of digital pictures, but I can NOT make them any bigger. Any questions, ask!!!

During the next few months, I will be revising fonts and characteristics of the NEWS to a more standardized format and working to make it even better. I certainly hope you will agree with the changes. And we need more pictures!!! Of course I need you to send some to me! I have a lot of pictures at my disposal, but most are several years old.

Do you have something you want to write about? KC8IM spent a lot of time on his article and it is published in this edition. Not only that, but he sent pictures and one of them ended up on the front cover!

Now that you are done reading here, I hope you enjoy the rest of the NEWS as much as I did when putting it together. Until we make that next contact...73!

Steve NØWY

# CONTENTS

An-Ten-Ten-nas	10
Award Listings	24
Award Managers	25
Chapter Coordinator's Column	12
Contest Cover Sheet	32
Contest Results	20
Contest Rules - NEW!!!	18
DX News	14
Electronic Delivery of the NEWS	5
Hot Off the Press	3
Life Members	28
Making an Antenna from Busted Parts	9
Membership Application and Contact Log	31
Membership Information and Services	30
More Pictures from San Antonio	16
Neanderthal Meeting 2003	8
Net Control Stations	3
Net Guide	29
Net News and Quarterly Report	22
Officers, Directors and Net Officials	2
President's Message	4
QSL Bureau	6
Scholarship Application Information	27
Scholarship Foundation Supporters	26
Silent Keys	28
Thank You Once Again	6
W6OI #109 On The Air	21
Webmaster - Found	7
WinIQ Now Available	5
and much more!	

## 10-10 NET CONTROL STATIONS

ALL NETS BEGIN AT 1800Z

Monday (28.380)	Dick, K6PZE #01341
Monday (28.800)	Scotty, WA6TQC #00071
Tuesday (28.380)	Tom, KA9EKG #70731
Tuesday (28.800)	Don, KB0ON #29849
Wednesday (28.380)	Chris, N7PVL #58018
Wednesday (28.800)	Louise, N6ELK #36654
Thursday (28.380)	Bob, N6OPR #45715
Thursday (28.800)	Robert, KQ4PK #63201
Friday (28.380)	Bill, KB9MJ #22313
Friday (28.800)	Alan, VE4ALN #69217
Saturday (28.380)	Ed, KC4RIY #58203
Saturday (28.800)	Earl, KS4XI #70679
Sunday	"NEVER ON SUNDAY"

Alternate Net Controller	Brian, KC7OC #67668
Alternate Net Controller	John, NS2M #72143
Alternate Net Controller	Bob, W7GSV #07673



*from the office of the*  
**PRESIDENT**  
**10-10**  
**International**

**Chuck Imsande**  
**W6YLJ #19636**

First, I want to wish everyone a Safe, Healthy and Happy New Year.

Let's take a brief look at the year 2003 from a 10-10 viewpoint.

The year began with newly elected Officers and Directors taking office January 1st. The elected Officers and Directors are Chuck Imsande W6YLJ #19636, President, Mike Elliott, K7BOI #54625, Vice President, Dick Corlew NC6V #25057, Secretary, and Directors Bill Marple AA7ZW #62075, Steve Rasmussen N0WY #68684, Ed Redwine K5ERJ #11843 and Cliff Taylor K5ERJ #48461.

Also on January 1st, our yearly anniversary contest began. This contest, which is repeated each year, celebrates the anniversary of 10-10. The idea of this contest is to work as many 10-10 members with our anniversary year number embedded in their 10-10 number. For example, 2003 was the 41st anniversary year of 10-10. So the number 12413 (for example) would be good for a contact in the Anniversary QSO Party. Any 10-10 number with "41" in the 10-10 number is a good contact.

10-10 held its first ever Mobile Contest on March 15th. The idea of the Mobile Contest was the brainchild of Bob Peschka K7QXG #05956. Bob set up the rules and scored the first mobile contest. This new contest was so well received that the Board of Directors have added it to our list of annual contests.

10-10 had a booth at the Dayton Hamvention 2003 again this year. This was a good show for 10-10 with several of the Officers and Directors in attendance greeting over 350 10-10 members at the booth. Untold numbers of non-members stopped by inquiring about 10-10. All were given a copy of the latest edition of the NEWS and questions about 10-10 were answered. 10-10 will also have a booth and forum at the 2004 Dayton Hamvention.

In addition to the Dayton booth, a 10-10 forum was presented to over 50 people, both 10-10 members and non-members. A forum of "What's New in 10-10" was given followed by a question and answer period. All in all, it was good PR for 10-10 and well worth the time and effort it takes for 10-10 to attend a ham convention of the size of the Dayton Hamvention.

Several of your Officers and Directors attended the Southwestern ARRL Convention in Long Beach, CA and manned a booth and presented a forum.

A very successful 10-10 Convention was held in San Antonio, TX, in June under the Convention Chairmanship of Ray Dobson, N5DAS #35877, and his hard working committee. Almost 200 were in attendance with 175 at the banquet on Saturday night. A great time was had by all renewing old friendships and making new friends. The Presidents Award for

2002 was presented to Ruth Bartholomew, N0KDB #48715. There were about 22 Chapter Tables, a Parking Lot Net, several Forums, Great Food and lots of super Prizes. The next 10-10 Convention is scheduled for 2005, so plan ahead and watch for details coming soon.

Mike Crawshaw G4BLH #18446, our Director from England, found it necessary to resign his position for personal reasons. K5CC Jack Moore #50708, was appointed Director to fill out the balance of Mike's term. Jack is well known as the host of the 10-10 Texas Hill Country Picnic held at his place in the Hill Country each summer. He will take over Mike's responsibilities of 10-10 Web Site Coordinator.

At the 2003 Board of Directors meeting, the Board voted to establish a 10-10 QSL Bureau which was funded for a two year trial basis. A number of volunteers offered to accept the position of 10-10 QSL Manager. After a detail review of the applicants, Bob Peschka, K7QXG #05956, (the same Bob that authored the new 10-10 Mobile Contest) was chosen as the 10-10 QSL Bureau Manager. Bob has had considerable experience in not only setting up a QSL Bureau, but also operating a QSL Bureau. He set up and operated the QRP Bureau for several years. The 10-10 Bureau became operational on January 1, 2004 and will sort and forward cards from any 10-10 member. For details of how this free Bureau will operate, check the 10-10 Web Site or see the article in this issue of the News. For the present time the Bureau will only sort and forward cards from U.S. members. Once established and operational, consideration will be given to including DX members. This will be another one of those "use it or lose it" programs. We have established a two year period to evaluate its worth. It's simple and inexpensive to use, so give it a try.

Our long time 10-10 Website Manager, L.B. Cebik W4RNL #41159, asked to be replaced. L.B. designed and set up the original 10-10 web, ten-ten.org, and his design and efforts won several awards over the past few years. It is with regret that we must let L.B. retire from this position. Our new Webmaster is Dar Piatt W9HZC #73090, who is a professional web designer. Dar has some new ideas for our web site so look for some changes and new features on the 10-10 web in the near future. Dar has set up a special e-mail address for 10-10 correspondence with the 10-10 webmaster. This address for 10-10 website business is dw-piatt@cox.net.

The Scholarship Fund had a good year. Although the final report for the year is not yet in (as this column is being written in early December) the results to date for the year 2003 look very favorable for us to meet our goal of \$5000 in donations. A mailing to all 10-10 Life Members produced a sizeable number of donations which helped us meet our goal. To the Life Members that participated in this drive, both Larry and I want to thank you. As usual this group can be counted on when any need arises. A big thank you also go out to all those other members that made a donation during the year 2003. Together, we have all made the Scholarship Fund a 100% success for 2003. I know that the kids that receive one of our scholarships will be very grateful. As we start the New Year, please consider a donation to the 10-10 Scholarship Fund. All donations are tax deductible and every penny you contribute goes to the Fund as 10-10 supports the Fund

by paying all expenses. You can make a donation to the 10-10 Scholarship Fund by sending your check to Larry Berger WA2SUH, 10-10 Scholarship Manager, 9 Nancy Blvd., Merrick, NY 11566-3119.

We accomplished a great deal in the year 2003, but there is more that we can accomplish in 2004. One item that continues to be a problem is the activity on 28.345. You all know what I am talking about. Much of the activity on .345 is far from professional. I urge all of you that frequent .345 to have consideration for others and conduct yourself as a truly professional amateur radio operator.

So much for the year 2003, and now for our first fun contest for the year 2004. The challenge is to work as many 10-10 members with "42" in their 10-10 number to celebrate 10-10's 42nd Birthday year. This is a year long contest, so you may begin at any time (after January 1, 2004) and look for the 10-10 Birthday number "42" somewhere within the 10-10 number.

I will be looking for you in the Winter Phone to be held on Feb 7-8. If I do not have your QSL in my file, my QSL card for you will be available through the new 10-10 QSL Bureau. Hope you do the same.

Please send me comments, suggestions or whatever, having to do with 10-10. Your comments are always welcome.

---

### Electronic Delivery of the NEWS

The number of 10-10 members taking advantage of this method of receiving the 10-10 NEWS has grown to over 200. The Board has yet to formally adopt Electronic delivery and have been hoping for a higher percentage of membership participation. This is especially true with DX members, where costs are higher and delivery of the NEWS slower.

One BIG problem evident from the start and which will never go away is changes to email addresses and the struggle to keep them current. It must be remembered that if the program is formally adopted, the notification of change in the email address is the responsibility of the member. When an email is rejected, access to the 10-10 NEWS will cease until the Data Manager is notified of new address..

There are several ways to notify the 10-10 Data Manager when addresses are changed. Send the Data Manager an email, go to either the 10-10 or LinGer website and send the Data Manager a message. Now you can view your membership information online by visiting the LinGer website and doing a member inquiry. Let us know when you move or have wrong information.

Starting with this issue, Page 32 will have the logon and password to view or download the current issue of the 10-10 NEWS. Try it out and remember if you sign up for electronic delivery you would receive an email notice at least 2 to 3 weeks earlier than receiving the hard copy. When formally adopted by the Board, you can save on your dues and donate the difference to the 10-10 Scholarship fund and take a tax deduction, US Members only.

To sign up to receive the electronic 10-10 NEWS via download or as an attachment, send an email to

WA6POZ@ARRL.NET stating your delivery preference. The default is download. The email address of the message will be the address used unless one is given in the message text. Remember, delivery of the 10-10 NEWS is for members with dues that are current.

The web address of LinGer is <WWW.LINGERINC.COM>

---

### 2004 Dayton Hamvention

10-10 will again be represented at the 2004 Dayton Hamvention, May 14-16.

10-10 will host a forum on Saturday afternoon from 4:15 until 5:00 p.m. in Room 2. If you plan to attend the Hamvention this year, remember to stop by the booth, sign the guest book and attend the forum. It is an easy way to meet and greet other 10-10 members and Net Officials.

---

### Credit Card Processing Changes

Effective December 1st, Credit Card processing was changed to reflect the merchant as 10-10 International, Omaha, NE rather than RSVP Paper and Party Goods, Omaha, NE. Gerry, WA6POZ, #21274 the 10-10 Data Manager had provided Credit Card processing through his retail store for the past years. The physical store was closed several years ago but Gerry kept the name and Credit Card processing active for 10-10's benefit. It did cause a few problems when members didn't remember the 10-10/RSVP relationship and began Charge Back procedures. In the end Gerry wanted to close down RSVP and it was decided to establish 10-10 as a true Merchant.

At this time only VISA and MasterCard, Debit and Credit Cards will be honored. American Express and Discover Cards were used so infrequently, the relationship with those processors was not established. Card Processing will be done via a secure link to a web site maintained by the Merchant Processing Bank. Because of that no receipt will be generated with the charge. However, a reminder slip will be returned with the charge details and the charge will be reflected on your monthly Credit Card statement as 10-10 International Omaha NE.

In the future, the ability to renew membership and purchase 10-10 material will be enabled directly from the 10-10 web.

---

### WinIQ is Now Available

WinIQ, a Windows version of XXIQ is available now from <www.lingerinc.com>. It also will be available directly from the 10-10 web in the near future. The availability of XXIQ will be discontinued by the end of the second quarter. WinIQ has all the same features of XXIQ and a few new search opportunities. It is anticipated that other enhancements will be made in the future to increase the usefulness of this 10-10 membership tool.

## The 10-10 QSL Bureau

10-10 International will offer a new service to all persons with a 10-10 number beginning January 1, 2004. It is a QSL bureau service for pasteboard QSLs that you send to other 10-10 members. This is NOT a DX QSL Card Bureau. Please use the available ARRL DX QSL Card Bureau for that purpose.

To use the 10-10 QSL Bureau, you must have SASEs (self-addressed-stamped-envelopes) on file with the QSL Manager. The envelopes shall be #6 size (3 5/8 x 6 1/2) with your address and one first class stamp. Print your call legibly and boldly in the upper left corner.

At the beginning of the program, send the Manager just 2 envelopes. After the program has been underway for 6 months, the Manager may notify you to keep more envelopes on file if the demand warrants it. This may also avert problems that could arise due to postal rate increases.

When sending cards to the QSL Bureau, be sure they are properly filled out with all information from the contact, including your 10-10 number and the county you operated from. If you were QRP, please indicate the power on your card.

There is no limit to the number of cards you can send to the

QSL Bureau at any one time (they must all be for 10-10 members). The QSL Manager will return cards to you when one of your envelopes contains sufficient cards to meet, and not exceed, the postage on the envelope.

If you have further questions, please refer them direct to the QSL Manager. The program may be modified from time to time in the interest of economy and efficiency and a progress report will be made in the April News. This is a 2 year test program, and a decision will be made by the Board of Directors before the 2 years are up as to whether to retain the program or discontinue it. If you don't use it, you lose it.

This service is for pasteboard QSLs only. It is not a forwarding service for electronic QSL cards.

Cards, Envelopes, and Inquiries to:

Bob Peschka, K7QXG  
10-10 QSL Manager  
592 S.E. Cypress Avenue  
Dallas, OR 97338-2932

## Thank you once again!



Over the past three years I have been fortunate to have been the recipient of 10-10 International Scholarships. Although a short biography of each scholarship recipient appears in the 10-10 newsletter, I wanted to take this opportunity to tell the 10-10 membership more about myself, including my educational endeavors and my experience with amateur radio.

Although I hail from Michigan, my undergraduate studies began in the Blue Ridge Mountains region of Virginia. At Christendom College, I spent three years majoring in Classical Studies, which involved intensive work in ancient Latin and Greek, along with the study of Roman and Greek literature and history. Right after finishing my freshman year of college I was licensed as KG4EHK. During that first year of being licensed, I became involved in ARES and NTS and operated in packet radio. About a year later I upgraded to General class and applied for my current callsign, N8CFS-that was during my junior year of college.

I have to laugh a bit when I recall how active I was on the airwaves during my junior year of college. (Of course, being a conscious student, my studies received their deserved attention.) I had my station setup inside my dorm room. It was composed of 2 Kenwood TS-520 radios, a 2m mobile for voice, and a 2m packet station. Even more amazing was the antenna array I was permitted to erect outside the dorm: an 80m dipole, a 20m inverted-V, and 2m mobile antennas placed in the rain gutter. I was very lucky to have very patient roommates. During that junior year I received my 10-10 number 72151 and operated on the ten meter band quite frequently.

For my senior year of college I transferred to Wadham's Hall College in northern New York State, where I completed my undergraduate degree in Philosophy. Fortunately, the college president was a ham, so I was able to erect a modest antenna array. I also upgraded to Extra class in 2002. In the spring 2002 I graduated cum laude with a BA in Philosophy.

My next educational goal was to attend graduate school. Since the fall of 2002, I have been pursuing a MA in Economics at Walsh College, which is located outside of Detroit. Recently I have become involved in teaching, both at the secondary and collegiate levels. After completing my masters degree, I hope to develop a career in college education. I continue to be active in the radio hobby, and serve as president of the Lapeer County Amateur Radio Association. During 2003 I became involved in the Navy-Marine Corps branch of MARS and have thoroughly enjoyed that involvement. My operating time is somewhat limited, but still involves DXing, MARS and NTS work, and casual ragchewing.

If all goes as planned, I will to graduate in March 2004. I am considering to further my education by pursuing a doctorate in History, with a concentration in American Economics.

Let me take this opportunity to thank the entire membership of 10-10 International, especially those who have donated to the Scholarship Fund, for honoring me with its scholarships over the past three years. I am confident that my fellow scholarship recipients will agree that the 10-10 Scholarships greatly assist in financing our educations. It is through the generosity of the 10-10 membership that make these scholarships possible. Thank you once again!

**SUPPORT THE  
10-10 SCHOLARSHIP FOUNDATION  
WITH A DONATION TODAY!**  
more information available on pages 26-27

## WEBMASTER - FOUND

In the last edition of the NEWS, it was advertised that we needed a new Web Site Manager. L.B. Cebik, the creator and manager of our web site for the last ten years has found it necessary to resign for personal reasons. We wish to take this opportunity to say THANK YOU for a job well done. You have brought us a long way L.B. and we are very appreciative of it!

Now, in the way of introducing our new Manager, Dar has written a quick? autobiography for publication. We wish to thank him for stepping forward and welcome him as a dedicated volunteer. Here is what he writes:

Name - Dar... ( Darwin Wendell Piatt Jr. )  
 born - Lincoln, NE (1942)  
 married - Patti  
 children - 8 total (5 boys, three girls!)

Retired from the U.S. Air Force in 1984 after serving for 23 years. An Airborne Electronics Technician for 10 years. A Maintenance Systems Analyst (Statistician) for the remaining time.

Served in Japan, The Philippines, Thailand, England, Viet Nam and several bases here in the United States. Served one assignment at Chanute Air Force Base in Ill as an Air Force Training Instructor, teaching Introduction to Statistics, Advanced Statistics and MMICS (Maintenance Management Information and Control Systems) and earned the rating of Master Instructor.

While in the Air Force, I taught College Math and Basic Electronics for Texas College and Computer programming for Embry Riddle University.

I retired in 1984, and my first civilian job was at Mutual of Omaha as a Programmer/Analyst developing and writing Life Insurance programs to run on the PC.

I left Mutual after 3 years and went to work for Gateway Electronics Institute where I served as a Computer Programming Instructor and as the Director of the Programming Department and later became the Director of the Gateway Electronics Lincoln School.

After leaving Gateway, I worked for McCallie Associates as a contractor here at First National Bank and was asked to stay on at First National after the McCallie contract was completed.

I started as a LAN Engineer working on the Server team and in the Desk Top Support department for 4 years then transferred to the Human Resources/Training Department where I worked as the Learning Technologies Manager. I designed and developed Computer Based Training (CBT) and Web Based Training (WBT) for products and services developed within the bank. I also helped develop and maintain the HR/Training Intranet Web site.

At present, I work in the Merchant Services Division as the Technology Projects Manager (Senior Business Systems Liaison) and am helping to 'automate' the remote sales force. I am also involved in moving the division 'on to the web'.



I have been teaching for over 25 years (1975). Besides teaching for the Air Force, Texas College, and Embry Riddle, I taught Continuing Education courses for the Millard School District for nearly 10 years and then for Metropolitan Community College for a couple years. I am currently an Adjunct Instructor for the Computer and Office Technology Department at Metro College and an Adjunct Instructor at the Nebraska Indian Community College.

Member of the ASTD (American Society of Trainers and Developers), Nebraska chapter. ([www.astdnebraska.org](http://www.astdnebraska.org)). Member of the MISP (Midwest Information Systems Professionals). Advisory board member at the Nebraska school of Business. Member of the Bellevue Amateur Radio club and club newsletter editor. Member of the Strategic Air Command Memorial Amateur Radio Club. (web master and club President 2002 and 2003). I also belong to QCWA and am a member (and webmaster) of the Omaha Chapter 210. I also belong to the Iowa QRP group. Last (and not least) member of 10-10 International with # 73090.

Besides Ham Radio (call sign W9HZC), My hobbies are also Electronics & Computers. I like to build my own QRP stuff, model cars and ships and airplanes. I also like to go fishing with my son Zac. I like Star Wars, Star Trek, and the X Files, but not necessarily in that order.

My first call sign was WN6RDV in 1970 and when I upgraded to General it became WA6RDV. I later received WB5HZH when it became evident that I would be spending a long time in the Air Force. I asked the FCC to issue me a call sign based on my permanent residence in Texas (thus the WB5 call). When vanity calls became available, I requested W9HZC as it was my Grandfather, Ben Elliott's call back in the 30's, 40's and early 50's. He became an SK in 1951 when I was 9.

While in the Air Force I operated for 6 years as G5CNP in England and was lucky enough to work W5LFL on Columbia via 2 meters in 1983.

I helped to run several MARS stations, in Vietnam and the Philippines in the 60's and at Chanute AFB in the 70's.

10 meters has always been my most favorite band. I run a Radio Shack HTX-10 in the car and an HTX-100 with 80 watt amplifier at the house. I have an old Hi-gain CB rig converted to 10FM that works great.

My current station consists of an old Drake TR-3 (broke right now) and a complete Heath Kit station I built back in 74/75. (picture attached). I plan a station up-grade in the near future.

For Antennas, I have a 4BTV vertical (ground mounted) with an 80 meter resonator on top, a 255 foot long wire, tuned with a home brew CLC tuner, a 10 meter rotateable di-pole, plus various vhf (144, 220 and 440) verticals sticking out of roof. There is a 30 foot tower ready to go up this Spring and a TH3 tri-band antenna ready to go on top.

73 de Dar W9HZC



## NEANDERTHAL MEETING 2003

At the 08.November 2003 the Neanderthal meeting again took place in the proximity of the Neanderthal museum (Germany). Altogether eleven Neanderthaler (some with harmonics) meet at 15:00 o'clock in the hotel "Haus Pooch". This were clearly less than in the last year.

Elfi DF3TE and Werner DH1PAL were so nice to align a mobile starting competition before the meeting. During 45 minutes, many Stations as possible had to be done. Between that stations the members had to answer some tricky questions. Finally at one checkpoint the competitions were asked to do some kind of "craps".

The 1. place went to Rolf DH2RTW, the 2. to Torsten DL2KG and the 3. winner was Werner DL1KDW. During the meeting all "Neanderthaler" had the possibility of winning some points in addition.

CM Torsten DL2KG made itself the trouble and evaluated some data of the Neanderthal chapter statistics for the meeting:

Altogether the Neanderthal Chapter has 427 members from 23 countries. Five US States (DE, MT, SC, SD and WY) are still missing. Highest score has Henry DL8YBM. The most Seals are going to Diethelm DJ2YE, Werner DH1PAL and Elfi DF3TE.

The buzzers of all points results in a value over 160.000 points. Since the establishment there were 347 Neanderthal net's with altogether 5381 stations QRV. That corresponds to 15.5 checks per round. The year with the highest round participation was 1999 (986 checks in). In the net's most check ins: Diethelm DJ2YE (291 x) and Bert DJ2VZ (285 x) were most frequent.

The next meeting, in which the Neanderthal Chapter will participate, is on Saturday the 12.Juni.2004 on the occasion of friendship meetings (35 years DIG) in Gemuend (Germany).

There one a 10-X net on 28,355 MHz at 14:30 UTC will be on start. For questions about this meeting please contact: Werner DH1PAL [dh1pal@darf.de](mailto:dh1pal@darf.de)



We wish you a happy new year,

73 de Torsten  
DL2KG  
CM Neanderthal

in picture  
from left to right

XYL of DH4JU  
Rolf DH2RTW  
Gerd DH4JU  
Peter DH4JQ  
Karlfrid DL1EK  
XYL of DH4JQ  
Klaus DB9JP  
Werner DL1KDW  
Torsten DL2KG  
Marion DF4UM  
Erwin DJ6SE  
Werner DH1PAL  
Elfi DF3TE  
Diethelm DJ2YE

## SPECIAL EVENT

Look for Jack Forbing K9LSB #22322, to be operating as K9L from March 1-14th in celebration of 50 years as a licensed operator. K9LSB and members of the Hoosierland Amateur Mobile Systems will operate all bands and all modes from the home of K9LSB in Fort Wayne, Indiana. All QSLs go to K9LSB. SASE will get you a nice card in return. Equipment for the activity will be a FT-1000MP Mark V and a FTV-1000 6 meter transverter into an A3A at 65ft. He will use dipoles on everything else. Jack has been a 10-10 member for about 25 years so Good luck. *Thanks to the Ohio Penn DX Bulletin for this info - forwarded to 10-10 by Mike N5MT.*

## HILL COUNTRY PICNIC 2004

The 16th Annual Hill Country Picnic will be held at the QTH of Jack K5CC on 30 May 2004. For information contact K5CC, WD5EDR, K5FBS or N5DAS. Everyone is welcome!!



## MAKING AN ANTENNA FROM BUSTED PARTS

by Daniel A. Wisner KC8IM #31959

Do you have access to random lengths/diameters of aluminum tubing, such as, aluminum salvaged from damaged or broken up HAM or CB antennas? Would you like to build up your short Yagi to a longer one? Then use these important techniques to build up a very good antenna from damaged antennas without cut and try. How I come to find them is that in the past few years we have had a bad storm, ice & wind combined, that has destroyed my antenna yearly. I can not afford a new antenna every year but yet I wanted a very good antenna!

Select the number of elements, spacing & reference diameter/length of your choice after considering designs found in handbooks and those used on commercial Yagi antennas. I choose to use spacing of the elements on the boom more as a function of mechanical strength than electrical performance.

KC8IM's 5 element on 24' boom (common spacings)

Element spacings	<u>R-DE</u>	<u>DE-D1</u>	<u>D1-D2</u>	<u>D2-D3</u>
Wavelength	0.160	0.117	0.175	0.235

Use an antenna program that has a Scaling module for Scaling element diameters and calculating element length. Such a program allows the user to make up each element of a YAGI with whatever length/diameter of aluminum tubing they have access to and it figures out the length of the element tip for that taper! **No cut and try or experimentation required!** *Keep in mind the configuration of the available element attachment hardware to the boom; it might need to be considered an element section. This will be required if the element attachment hardware increases the element diameter for a length near the boom.*

Inventory the available aluminum material and mark all tubes with O.D., I.D. and length; there are three (3) common wall thickness, namely: 0.031", 0.058" & 0.125" that telescope into each other. The next larger diameter tube should be used as a sleeve over the center of the element. Bent elements usually occurs near the boom. Partially straighten the bend, put a sleeve over the bent portion using the next size larger diameter tubing and install element on boom rotated 180°. Think of it as a pre-stressed element. This sleeve is almost universally recommended for robust element construction anyway! Example: If the original ½ element is made of two sections; adding a sleeve makes it three sections and the element tip length will compute shorter than its original length.

Slot the element sections on the end to later compress with stainless steel hose clamps.

If oxidation is present on the aluminum to be use for telescoping; abrade to remove the oxidation & coat the inside surface with aluminum/aluminum electrical joint anti-corrosion compound.

Next make up each element by telescoping the section diameters together; using a minimum three inch (3") insertion/overlap. Secure joint by tightening the stainless steel hose clamp. The exposed section length of each diameter must be identical both sides of element center (point of attachment to the boom). **The exposed length and diameter of each section of the element must be accurately recorded for entering in the Scale utility. Mark the element with its position R, DE, D1, D2, D3, etc.** There is no cutting of Aluminum tubing necessary. Just telescope what ever lengths of tubing you have access to and use a Scale utility to compute the element tip length! Every element can have a different taper schedule. Wrap each joint with black vinyl tape to seal against the intrusion of water.

Use double booms (see photo below) which can be coupled together with plates and exhaust pipe clamps or Schedule 40 PVC pipe fittings. The primary boom diameter can be that of a CB or short HAM Yagi, thus allowing the use of that hardware; while the secondary boom can be of larger diameter for additional strength. The boom couplers can also be used to facilitate boom section splicing.

Place the large diameter/heavier elements near the mast and the smaller diameter/lighter elements at the end of the boom

Use a double strut at a 30° angle to the boom of preferably UV resistant non-conducting Guy cable. The cross bar support for the strut is best made from UV resistant plastic bar to avoid distortion of the antenna pattern.

See past An-Ten-Ten-nas articles by L.B. Cebik for all other necessary details not covered in this brief note; particularly the July 2003 article.

Conclusion: My experience changing element diameter and taper sequence worked well without adjustment. This enables using random lengths/diameter of Aluminum tubing to make up each element. It is said that using large diameter elements may broaden the frequency response a bit.



# An-Ten-Ten-nas

INFORMATION  
TO HELP YOU DECIDE  
ON THE BEST ANTENNA  
FOR YOU

L. B. Cebik  
W4RNL #41159



In each issue of the News, we shall try to clarify a significant cluster of ideas used in antenna work. Our object is to help you make the best decisions about the antennas you buy or build without imposing our own prejudices on you. The more you understand, the better your choices will be.

## No. 42: A Hilltopper Portable Dipole

A rotatable dipole is a very useful antenna for portable or hilltop operations. Unlike a vertical that should have a ground plane, the dipole is horizontal and needs none. Of course, we do have to think about a support mast. It may consist of 3-4 5' sections of TV mast or even a painter's pole--each with at least 3 guy ropes and tent stakes to stabilize the system.

But what about the antenna? We can make a dipole from wire, tubing, end-to-end whips, and a bunch of other materials. The featured system for this episode is made from tubing. We can easily obtain 3 6' lengths of aluminum tubing from sources like Texas Towers at very reasonable prices. We shall need 6' of 5/8" diameter, 6' of 1/2" diameter, and 6' of 3/8" diameter tubing. T6063-832 is the most usual tubing to use because each size nests well inside the next larger size.

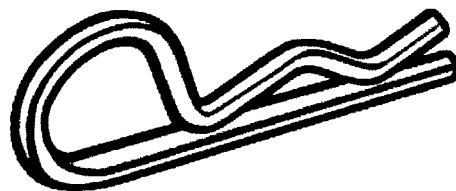
A good portable antenna should require an absolute minimum number of tools for assembly in the field. How about 1 wrench to tighten the center plate to the mast. We shall need no other tools to assemble and disassemble our antenna.

Fig. 1 shows the basic tubing layout on each side of the center plate. We cut the 6' tubes in half. Then we carefully smooth the cuts so that the 3' sections will slide easily inside each other. The two larger tubes need a 33" exposure, with 3" inside the next tube. The smallest tube needs only a 30" exposure, and you can either cut off 3" or have 6" of tubing inside the next size. With 5" on the center plate (discussed a bit further on), we shall have 101" each side of center or 202" overall--a good size for the lower MHz of 10 meters.

When not in use, slide the tubes for each side of the dipole inside each other. You will end up with an easily stored 3' long set of element pieces. As well, you will always have the correct sections in place, just in case the holes for comparable pieces on each side are not perfectly aligned for complete interchangeability.

Our fastener will be the hitch-pin clip--also known as the hairpin cotter pin and some other names. For clarity, Fig. 2 shows the shape of the clip.

**Hitch Pin Clip  
or  
Hairpin Cotter Pin**



**Fig. 2**

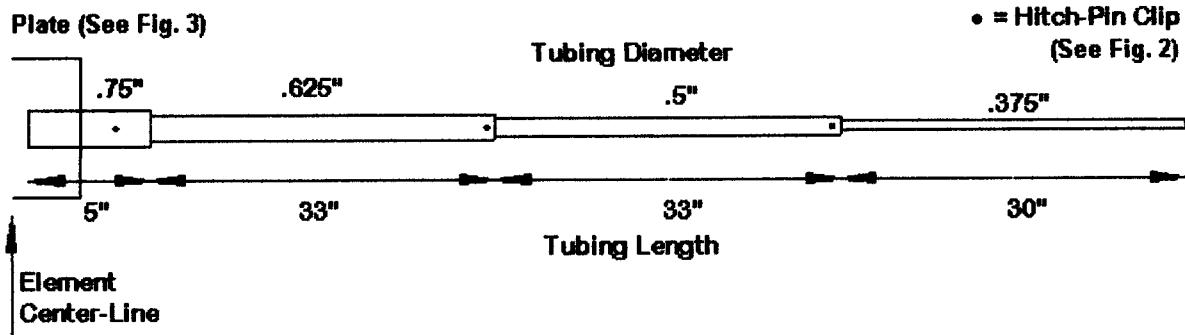
We drill holes through each pair of tubes at the center of the tubing junctions all the way through. Clean the drilled holes. The hole size depends on the clip material diameter. Choose clips designed to fasten tubes of the diameters that you are using. When we assemble the antenna in the field, we simply align the holes and press a hitch-pin clip through them. The sections are secure.

The electrical contact from one tube to the next depends on the tubes themselves. Hence, it makes sense to be sure that the tubing ends are clean inside and out before each field use. Do Not use the hitch-pin clip system for a permanent home antenna, since the tubes may accumulate dirt that may interrupt electrical contact. But for short term field use, this system work very well indeed.

To avoid losing clips in the grass or gravel of the field site, you can tie a bright ribbon to each one. For storage, you can clip all of the clips to a designated master clip.

Now all that we need is a center section so that we can assembly the elements and connect a length of coaxial cable. Fig. 3 shows the system that I am using.

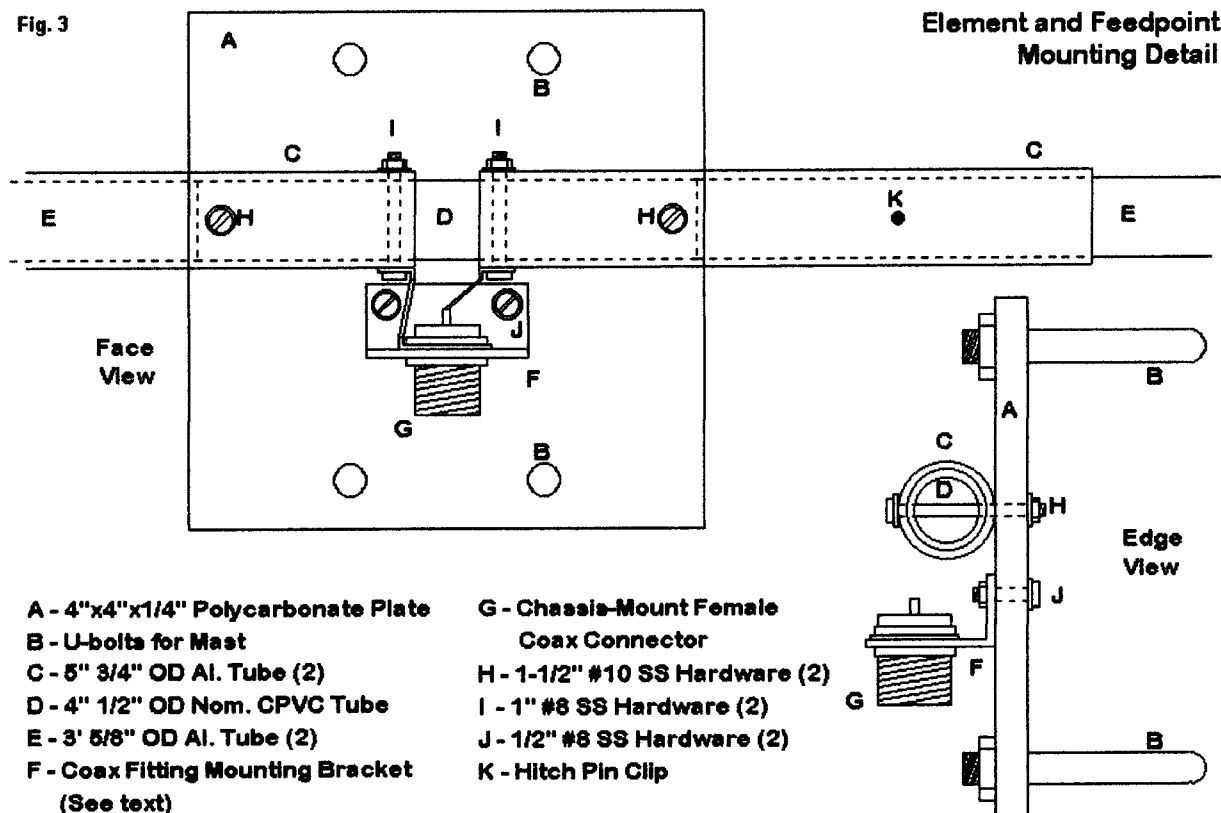
I had some polycarbonate (tradename: Lexan) plate 1/4" thick in the shop. However, you can use plywood or acrylic for the center plate. A 4" by 4" square will do the job. At the top and bottom of the plate, drill holes for U-bolts that are sized to the mast diameter that you will use.



**General Tubing Layout for Each Half of Element**

**Fig. 1**

Fig. 3



Note that the elements cross the plate just above the centerline in order to leave room for a coax connector. I used a short section of 1" by 1" L-stock, 1/16" thick for my connector. The connector is the version that mounts in a chassis hole. It is useful to cut the 5/8" connector hole and screw holes before cutting the stock to its final inch and a quarter length, and a bench vise helps hold things in place during this work. The plate is a bit wide than it needs to be for the connector so that the screw holes will miss the mast behind the plate. In fact, I placed the heads of the screws on the mast side of the plate so that the nuts would not interfere with the mast.

Note that a short lead runs from the connector center pin and the ground lug to each side of the element. The element center pieces consist of scraps of 3/4" tubing lying around in the shop--cut-offs from old projects. In each 5" piece of 3/4" aluminum tubing, we need two sets of through holes. One set holds the tube to the plate near the plate edge. The other set--at right angles to the first set--is at the inner end of each tube. The hardware holds solder lugs for the connector leads.

We need one more piece of material for our assembly. 1/2" nominal CPVC just fits inside of 3/4" aluminum tubing. a 4" piece runs through the inner ends of each of the plate tubes. The CPVC keeps the tubes perfectly aligned and maintains the gap between them. A gap of about 1/2" between the ends of the 3/4" tubes works well, but 3/8" to 1" gaps are fine.

Since we used about 2" of each 5" tube on the plate with the CPVC inside, we have 3" of tubing extending off each side of the plate. This is the necessary 3" overlap for the 5/8" section of element tubing. Of course, we use hitch-pin clips to secure the element section to the center plate tubes. When complete, we should never have to touch the nuts and bolts on the center plate in the field.

(Check their tightness before taking the antenna to the field.) We simply hitch-pin the entire dipole together for use, connect a coax cable, and operate. Of course, fastening the plate to a mast and raising the mast will help our signals immensely.

My YL (Jean, N4TZP) stitched up an old but sturdy bath towel into a carry bag with a draw-string. So the dipole pieces are protected from dirt and bumps, but are always ready for use. In the bag, I have a dedicated wrench sized to the U-bolts ready for action. The 4" by 10" center plate assembly and the 2 3' long element assemblies make a compact package to carry. I have a bright ribbon on the center of the wrench, matching the ribbons on the hitch-pin clips. Incidentally, I store the mass of hitch-pin clips in one of the holes on the 3/4" center plate tubes. My goal is always to make everything ready to use and difficult to lose.

A little over 10 years ago, just before I started this series of antenna columns, I wrote an article for 10-10 News about a rotatable portable dipole using some materials adapted from the ground plane radials of an old CB antenna. I think that I like the present field antenna a little bit better. It stores in a smaller space and the materials are easily obtained. As well, the total cost is in the cheap range. While the shop work requires some care, the field work is as simple as I know how to make it.

The antenna is also adaptable for use on upper floor apartment balconies. In fact, if your balcony is at least 20' above ground, you can use a horizontal mast and hand turn the antenna from horizontal to vertical polarization. It works well either way. The antenna is also usable in emergency situations, whether the emergency is a matter of community communications when other circuits are down or simply a matter of the main station beam failing just as the band opens.

## CHAPTER COORDINATOR'S COLUMN

by Cliff Taylor K5FBS #48461



### Manager's Comments:

Those portions of the 10-10 Operations Manual which pertain to chapters were approved by the Board of Directors and are now part of that document.

I am going to make myself available for the following service. If one of the DX chapters is having a special or a worksheet, and you do not have internet capability, just send me an SASE and I will get a copy back to you.

### Quarterly Reports Received:

10-Bar-X; All American City; Arlington; Bay Area; Branding Iron; Chesapeake Bay; Chief Seattle; Cincinnati Area Ten Tuners; Colorado Centennial/ Centurion/Golden Aspen/Frontier Gang; Cradle of the Confederacy; Egyptian Radio Club; Golden Bear/Grub Stake/Hangtown Crossing/Mother Lode; Keystone/Keystone Stars; Minuteman; Oceans of the World/Suncoast; Palmetto; Peshtigo Fire; Whitehouse: Windfarms I have tried to communicate with the following chapters via snail mail and/or email, but have heard nothing from them: 59/62; Appalachian Mountain; Channel Islands; Dick Bass Memorial; Maine-iacs; Mo-Kan Tennes; Pine State; River City/Camellia Capital/Homebrew; Trotters and Pacers. If your chapter is listed in this section, please go to <http://www.drhnet/stlhb/report/>, fill out the form, and send it to me. If you do not have email capability, please let me know and I will make the form available to you. Don't forget that only one quarterly report per twelve-month period is required unless the chapter information contained therein changes. A new quarterly report should then be completed and forwarded. The information in these quarterly reports is used to update the "Net Guide", update the "Chapter Listing", and relay information re chapter happenings.

### Re-affiliated Chapter:

Suncoast - CH/CM is K4DRZ, Donald R. Zak, 3011 West Wilder Avenue, Tampa, FL 33614-6759. Email: [k4drz@netzero.net](mailto:k4drz@netzero.net). The chapter will hold a weekly net on Tuesday at 0200 UTC (Summer) and 0300 (Winter) on the frequency of 28.475 MHz.

### Chapter News:

**Arlington** - We issue a certificate to each new check-in. We are into having extended QSO's.

**Bauxite** - The Bauxite Chapter issued "Alamo Visitor" seals at the 2003 Ten-Ten Convention. These seals can be used as Wild Cards for seals 2-15 in the AR State Parks program by following guidelines 1-4 below. (No Wild Cards will be allowed on Seal #1,

which comes with the AR State Parks Certificate.)

1. To use an Alamo Visitor # in place of an AR Visitor #, submit callsign, date worked, and Alamo Visitor #.
2. Each Alamo Visitor # may be used only ONE time. No dupes.
3. On each seal, up to 3 different Alamo Visitor #'s may be used.
4. There is a maximum of 25 Alamo Visitor #'s (Wild Cards) allowed in the complete AR State Parks program.

**Colorado Centennial** - All past convention seals are no longer collectible. Collect SANAN03 seals now. If you have been assigned a "number only", you may obtain the certificate by sending 2 first class stamps to the CH. The CH's email address is changed to [chalice@comcast.net](mailto:chalice@comcast.net).

**Colorado Quartermaster** - The "Basic Training" worksheet, which started on 1 September, will run until it is finished. Details have been posted on the web site, <http://www.QRZDX.com>. If you have no internet/email capability, an SASE will get you the information.

**Cradle of the Confederacy** - Special Events: Inauguration 0001 February 13 to 2359 February 19 2004; Birthday 0001 28 May to 2359 June 2004. Special event QSL cards are available. Send an SASE with your QSL card and QSO information to N4SOJ, J. J. Bednarz Sr., 450 Pike Road, Pike Road, AL 36064-2246.

**Fort McHenry/Cornerstone** - January 1-31: Collect Fort McHenry W3FQN numbers for 1 FTMCH points each. Collect Cornerstone Rampart numbers for 5 Cornerstone points each. Upgrades must be postmarked no later than February 28, 2004. April 1-30: Collect Fort McHenry Defender numbers for 1 FTMCH points each. Collect Cornerstone AA3CA numbers for 5 Cornerstone points each. Upgrades must be postmarked no later than May 31, 2004.

**GB Ten** - The special for January 2004 is called the Rainbow Special. You may download a copy of the worksheet from our web site at <http://www.raynet-forestheath.info> (Please follow the link from the "Ten Cats" to our section of the site). In cases of difficulties, the CM will send a text version directly to you. The CM's email address is [gbten@globalnet.co.uk](mailto:gbten@globalnet.co.uk).

**Major League Baseball (MLB)** - The 2004 World Series Special will start on January 1 and run until January 31. This year the Florida Marlins will be the focus of the special. Worksheets can be found at our web page [www.qrzdx.com](http://www.qrzdx.com).

**Route 66** - The "Silent Key Special", to honor the silent keys that are members of the Route 66 Chapter, will start on at 0001 UTC, 01 February, and run through 2359 UTC, 31 March 2004. Stations with the special will give out a city/state which is located along Route 66. You will not be able to use yourself and there are no wild cards. Completed specials are to be returned by 15 April 2004 for credit to KA9ADD, Larry Roth, 911 Mayfair Drive, Boonville, IN 47601, email [ka9add1@juno.com](mailto:ka9add1@juno.com) or [ka9add@qsl.net](mailto:ka9add@qsl.net). An SASE to the above address or query via email will get you the worksheet.

**Springbok** - The chapter will be running a special starting on January 1, 2004 and it will run thru June 31, 2004, It will be called GO ON A SAFARI WITH SPRINGBOK. Mostly it will be a hunting trip to one or two of the South African hunting

preserves. All of the pertinent information has been sent via email. An SASE to the CM, KC4RHW, Jim Whittlesey, 612 Redbud Lane, Oliver Springs, TN 37840-2316 will get the paperwork for the special or query the information via email at kc4rhw@comcast.net. The chapter's web page is <http://springboknet.com>.

**Tango** - The chapter's certificate program is currently being revamped, and the information should be out soon.

**Twenty Eight** - The chapter is in recess for the time being.

## *List of chapters that accept Email upgrades*

(Current as of Ø1 December Ø3)

All of the listed chapters generally need previous, new, and total points and seals claimed. Any transaction with the CH that requires that a certificate be issued, and most worksheet specials, should still be handled via US Mail. Also to be on the safe side, a detailed listing of the upgrade should be kept in the event that the CM should require verification. Requirements peculiar to a particular chapter are noted below.

**Alii** - CM WH6S, wh6s@hawaiian.net. Use form available from the CM.

**Battle Road** - CM K1IEQ, k1ieq@juno.com

**Bauxite** - CM K5BKT, k5bkt@nwla.com - Bauxite and Arkansas Visitor #'s only

**Bay Area** - CM AC6FU, Jack\_Ruckman@msn.com (Bay of Bridges) All others to K6RDK, k6rdk@smrn.com

**Boomtown** - CM N5EBA, ed\_cisse\_neal@yahoo.com

**Bounty Hunters & Outlaws on Ten** - CM WD5EDR, wheberling@satx.rr.com

**Branding Iron** - CM KA5VVD, xit@seacove.net

**Branding Iron II** - CM N5XJD, n5xjd@seacove.net

**Cast Iron Tower** - CM DL5DXS, dl5dxs@web.de

**Castle Craig** - CM N1API, n1api@cox.net

**City of Roses/Portland Bridges** - CM KD7UZ, res0op9f@verizon.net

**\*Colorado Centennial** - CM NØCKW, chalice@comcast.net

**Colorado Frontier Gang** - CM WBØCON, wb0con@comcast.net

**Colorado Quarter-Master** - CM KCØCMZ, kc0cmz@qrzdx.com

**City of Roses/Portland Bridges Award** - CM KD7UZ, res0op9f@verizon.net

**Down Under** - CM ZL1KQ, via zl1kq@clear.net.nz

**Electric City** - CM WA2OIZ, istillwell@cfl.rr.com

**Fort McHenry** (including Cornerstone & Yodar Kritch) - CM K3TUIJ, k3tuj@juno.com

**GB Ten** - CM G4KHF, gbten@globalnet.co.uk

**Gold City** - CM N4WAB, n4wab@linkarmerica.com, Use on-line upgrade at website, collected seals to CM

**Great Lakes** - CM WA8OXS, wa8oxs@juno.com

**Houston S.H.O.T.** - CM N5AFV, afmattis@hal-pc.org

**Kansas Trails** - CM KB6UPG, kb6upg@willmar.com

**Keystone** - CM KA6GPC, ka6gpc@aol.com

**Lake Geneva** - CM W4KM, w4km@cox.net

**Laurel Mancunium** - CM G3RRM, g3rrm@aol.com

**\*Major League Baseball** - CM NS2M, kc2gcl@aol.com

**\*Neanderthal** - CM DL2KG, dl2kg@aol.com

**New Mexico Mud Duck** - CM KM5EH, buckml@lobo.net

**New Waterkant** - CM DK7LA, dk7la@t-online.de

**\*Oceans of the World** - CM KA4RVZ, k4drz@netzero.net

**Old Ironsides** - CM WA1ENO, wa1eno@hotmail.com

**Oregon Trailblazer** - CM KD7FZY, ckckd7fzy@webtv.net

**\*Peshtigo Fire** - CM W9BLI, w9bli@direcway.com - points and seals upgrade submit total, new, and previous also need total contacts for chapter

**Portland 5ØØ** - CM K7POS, floftis@attbi.com

**Republic of Texas** - CM WD8JKV, rayjkv@netzero.net

**\*Restoration Project/Feline Friends** - CM VE7ACM, catsncar@uniserve.com

**Route-66** - CM KA9ADD, ka9add@qsl.net or ka9add1@juno.com

**Santa Fe Trail** - CM KBØON, kb0on@kconline.com

**Sky Blue Waters/Tin Lizzie** - CM WBØRCC, cedwards@isd.net in addition to old, new and total points.

Submit total contacts, basic number(s) with current point value, 1Ø-1Ø number with date of expiration.

**South Texas Lighthouse Brigade** - CM N5DAS, n5das@juno.com. Submit old, new and total points, total contacts, and date of issue of original certificate.

**Space Coast** - CM WB1DBZ, wb1dbz@gnc.net

**Springbok** - CM KC4RHW, kc4rhw@comcast.net

**Steamboat Plus** - CM KD5DE, kd5de@nwla.com

**Steel City** - CM KE9WZ, ke9wz1@netzero.net

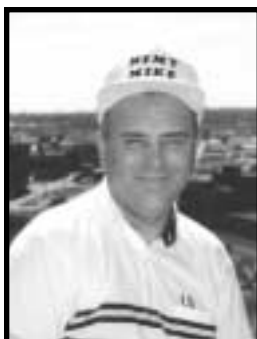
**\*Suncoast** - CM KA4RVZ, k4drz@netzero.net

**Trail Drivers** - CM N5SCA, n5sca@asapchoice.com

**Twin Cities** - CM KØDBK, k0dbk@comcast.net

These addresses are as current as the information you provide. If there are any additions, corrections or deletions to this list please contact the Chapter Manager, K5FBS, Cliff Taylor via email at catk5fbs@aol.com or via "snail" mail to 22707 Red Mountain Drive, Elmendorf, TX 78112-6034.

This column must be in to the editor of the NEWS no later than the first of the month of March, June, September, and December. So in order to make the deadline and if you want your chapter information in the current issue, it needs to be in hand by the 20th of February, May, August and November. Often chapter news or special information is received too late to make the issue on a timely basis. The column for the January issue for instance must be submitted to the editor on the 1st of December. So if your special is to run 1st through 31st December, it should be in hand prior to 20th August to be in the October issue, as the following issue of the News will not be out until January after your special is over. Chapter information is printed on a space available basis; sometimes not all information received can be printed. The deadline for the next issue of the News is the 20th of February.



**Mike Davidson**  
**N5MT #24949**

It surely was a good day when we started hearing signals out of Europe in mid-September. There have been several DXpeditions this quarter that were rare 10-10 countries that had not been on the air in a long time. So the fall DX season has gotten off to a good start even though we are more than half way complete with Solar Cycle 23 and the Solar flux continues its up and down movement.

TO4E Europa. A five man team of French operators are now on Europa Island until December 15th using call TO4E. Team members are: Dany F5CW #49137 (CW op), F5JJK (6 meters), F5NHJ (digital modes, 6 meters, SSB), F5IRO (SSB) and F5PTM/TT8ZZ (CW). This is the biggest DXpedition to Europa in years and the first one with a 10-10 member! They have a limited schedule (600-700Z and 1530-1945Z) as a result of sharing the electrical generator with the French military. Web site at <http://europa2003.free.fr/>. QSL via F5OGL.

I know that this will be a new 10-10 county when the QSL cards are issued! Good luck.

XU Cambodia. Dick N6FF #24616, has been on the low bands as XU7ACB. We talked by email and I told him that XU had never had any 10-10 activity and would be a new 10-10 country. So far we have not had any propagation into Texas. Dick leaves mid-December.

TT8 Chad. Allen N5XZ #4530, now has his Chad ham license in hand, TT8XZ. Christian TT8CB, helped get the license and to setup a radio and antenna. Allen leaves on December 19th when his work assignment is finished.

Rare countries worked this quarter were: Christmas Island by June VK4SJ/VK9XYL #63451 in October; Cocos Keeling by Beth VE7YL/VK9CYL #50488 in November; BQ9P Pratas Island by Falk DK7YY #23467 was a new country for me in October; and TO4E Europa Island, by Dany F5CW #49137 was also a new one for me in December. As of December 2003, the 10-10 country count remains at 312 countries.

## General 10-10 DX worked in the past quarter:

Ed 4L4FN #72722, is now in Angola with a new callsign D2PFN. He is still working with the UN Food Program. Ed found me on the 28555 DX Net last Sunday and we talked for fifteen minutes before he had to leave for work. He operates as his work schedule allows. The ARRL approved his Iraq operation for YI/4L4FN. QSL to Bruce KK5DO #65027 for any contacts the last two years.

3V Tunisia. Falk DK7YY #23467 was in big group using the

call TS7N from Kerkennah Islands, Tunisia the last of November. Web page: <http://www.qsl.net/ts7n>.

4U1UN UN-NY. Pedro HK3JJH #47437, was active in October, from 4U1UN #55555, the United Nations Headquarters station in New York city.

9M6 East Malaysia. Bob N2OO #12732 was operating from the 9M6AAC #70718 station after his trip to BQ9P until November 12th. QSL to N2OO.

BQ9P Pratas Island. A multi-national group of operators were set up on this remote island from October 9-16th. There were two 10-10 members: Falk DK7YY #23467 and Bob N2OO #12732. I made one contact with them on Ten for a new 10-10 country for me.

C5 Gambia. C5WW was the callsign for Mark ON4WW #49103, in October. QSL via ON4WW.

CT9L Madeira Island. Norby LX1NO #70622, and Jara DL1YD #62231 and others in the CQWW in Oct/Nov.

DL Germany. Juergen DJ7JB #63410, was on Borkum Island (IOTA EU-047) from October 5-10th.

EA8 Canary Islands. Frank EA8/DH5JG #72684, was on from La Palma (IOTA AF-004) from October 2-14th.

FO0 Austral Islands. A German team including Joe DF6IC #42056, was worked September 24th on Ten from the island of Tubuai in the Austral Islands.

HK0 San Andres Island. Jan HK0/K4QD #13423, Bill HK0/W4WX #62600, and Bob HK0/KR4DA #58365 went to San Andres Island from October 21 to 27th.

HV Vatican. Stefano IK0OER #62293 and others put on the Vatican November 10-11th on CW but there was no Ten meter activity. Next opportunity will be May 2004.

J3 Grenada. Ann WA1S #48144, was active as J38AA mostly on CW the last week in November. She told me she made over 1100 contacts on CW on Ten using 100 watts from her hotel room with a wire antenna.

J8 St. Vincent. Peter N0FW #30703 is using callsign J6DX until December 16th.

KP2 US Virgin Island. Slavek OK1TN #52722, was active as KP2/OK1TN from St. Thomas Island now through December 15th.

PJ2 Curacao. Joe WF9V #39807, and Hall W7FLE #6425 operated PJ2/home call from Curacao Dec. 2-9th.

PZ Suriname. Bob PZ5DX/K3BYV #33844 and Bob PZ5JR #39926, were in Suriname from October 20th to November 4th. I talked with them after the contest and they had a great score on Ten. QSL via K3BYV.

S9 Seychelles. Kurt S79MX/HB9MX #36152, said he left the Seychelles at the end of September and has moved back to Switzerland. He was using his HB9MX callsign last week when he gave me the details. Kurt enjoyed the quiet life from S9 but family health concerns were more important. Good luck Kurt. QSL to HB9MX.

T32 E. Kiribati. Greg W0ZA/T32ZA #15171, and others operated as T32WW during CQWW CW contest. I talked to Greg and swapped numbers at 0030Z on December 6th. They leave December 10th.



T8 Palau & V6 Micronesia. Tom K7ZZ #71378, operated as T88ZX from Palau the first week of October. Then to Micronesia as V63ZT for another week.

UA0 Asiatic Russia. Vlad UA0FZ #54239, was using a special callsign RS0F in the CQWW CW contest. He was in the rare zone 19. QSL via W3HNK.

V2 Antigua. Doug W3CF #55779, and Sigmond KM9M #29243 were at V26DX as an entry in the CQWW phone, from October 19th to November 1st. QSL via KU9C.

V4 St. Kitts & Nevis. Larry KJ4UY #16308 is on as V47UY until December 16th. Although this is a vacation, he will try to be active as much as possible.

V6 Micronesia. Paul W5PF/V63PF #5921 was on Yap Island for a week in late November. Conditions on Ten were not very good during his trip so he stayed on the lower frequencies most of the time. QSL to home call.

YI Iraq. Ghis ON5NT, reports the WFP guys who were in Baghdad, Iraq are now in Dubai, United Arab Emirates. The boss Peter ON6TT #51565, is also in Dubai. After Mark's ON4WW #49103, J28WW operation, he went home and will be working from C5 The Gambia soon.

VP5 Turks/Caicos. John N2VW #1476 and others, were active October 21- 28th from Judy's VP5JM #52729, under a VP5T callsign or VP5/home calls. David VP5/W5AO #6506 was heard from October 24-31th.

VP9 Bermuda. Bill N1HRA #56518, Matt WE1H #68056, N3KCJ and Joe K1JN #67165, were on from Bermuda, signing their VP9/home calls October 23-28th.

VK9 Christmas & Cocos-Keeling Islands. These YL's were busy from Christmas Island from Oct 13-27th and Cocos to November 10th. June VK9XYL/VK4SJ #63451, Beth VK9CYL/VE7YL #50488 the main CW op, and Gwen VK3DYL, were plagued with Solar storms and bad propagation during their trip. QSL to home calls.

## Upcoming DX & New 10-10 Activity:

9M2/9M6 West and East Malaysia. In February-March 2004 Rich PA0RRS #24343, will operate as 9M#/home call from Malaysia as follows: on February 6-9th from Kuala Lumpur (9M2), on Feb. 9- 20th from Keningau (OC-088) East Malaysia (9M6), from Feb. 20th to March 2nd from Penang Island (9M2, IOTA AS-015). NOTE: 9M2 West Malaysia is a rare 10-10 country so Good Luck.

9Y4 Tobago. Bill N4ZDL #70550, will be going on a holiday DXpedition to Tobago from December 19-25th. He will be operating as 9Y4/N4ZDL CW and SSB. Bill has a Web page at <http://members.cox.net/9y4-n4zdl>.

C9 Mozambique. Andre ZS6WPX #73604, will be active as C91Z until the end of the year. QSL to PO Box 2845, Middleberg, South Africa 1050.

JW Svalbard. Tom LA7VK #72716, will fly to the island for a short stay from December 5-8th. His last trip there was in May. QSL to call book address for Tom.

SV Greece. Dimitris SV1CIB #68921 will be using a special call sign SX1A for the 10Meter contest this year.

T33 Banaba. In April 2004 look for: Bill AK0A #13996, Flo F5CWU #71812, Bob N4CD #20902, Tom GM4FDM #31864, Doug N6TQS #72301, Willem K6ND #60944 and Andrea IK1PMR #62272 from Banaba Island.

ZF Grand Cayman Island. Pete N2LM #72434, will be active as ZF2PD on Grand Cayman Island (NA-016) from December 28th to January 8th. QSL to N2LM.

ZF Cayman Islands. Tony N3ME #14478, announced that he has received his amateur license and equipment import permit and will be operating from the Cayman Islands as ZF2TM from December 5-9th. Tony was on the air today at 28353Mhz and 28420Mhz from 1600-2100Z.

**Propagation:** In the USA, the Winter months, give us the best DX season with skip into Europe and Asia. This year the season opened later than last year as we have endured a decline in the Solar Flux this Winter.

The six-month prediction is for the Solar Flux to range from 85-130 for the beginning of 2004. Expect lower flux readings and fewer DX openings to Europe until the cycle ends in late 2006.

Cycle 23 is now 6.5 years old. The flux continues to stay moderate and I expect some DX will be seen but just not as good as last year. On December 6th, the Solar Flux was 109 the A index 23 and K index 4, which is the same flux we had three months ago due to the recent big solar flares the past two months which has increased the A & K indexes. These higher indexes are an indication that signal absorption is higher so less signal is skipping.

Expect the best conditions on December 18-22, January 14-17, 2004, February 10-13 and March 8-11. USA stations, expect a 40% chance of DX to Asia, Europe or Africa and a 50% chance into S. America in the mid-afternoon. The beacons from 28.175-28.300 will tell you what is open, especially 28.200. Good luck.

**New DX members Sept. to Nov. 2003:** 73620 VE6HAY, 73621 EW6WF, 73622 EW6AW, 73623 EU6PW, 73624 EV6C, 73968 NH7FY, 73969 AH7G, 74000 VA3MA, 74001 VA7JMR, 74002 DL4CF, 74003 ZL1AAR, 74004 VA3REM.

**Note:** Information on IRCs/US\$ needed for postage to the USA is at: <http://www.qsl.net/w9ol/ircchart.txt>.

QSL help is at: <http://files.billnjudy.com/>.

The Solar Forecast: [www.sel.noaa.gov/forecast.html](http://www.sel.noaa.gov/forecast.html).

**Countries Award:** There are now 601 basic certificates issued, I processed only one basic certificates and seven upgrades this past quarter. I can email a list of your country credits for the asking.

Thanks to the on-line DX List, The Daily DX by W3UR #25731, QRZ-DX, Lee KH6BZF #8888 & Ohio/Penn DX Bulletins. Send photos/info to Mike Davidson, 3518 Bellefontaine, Houston, TX 77025 USA Email: N5MT@aol.com

**DX IS!**

73 Mike Davidson N5MT #24949



KA5VVD & XYL



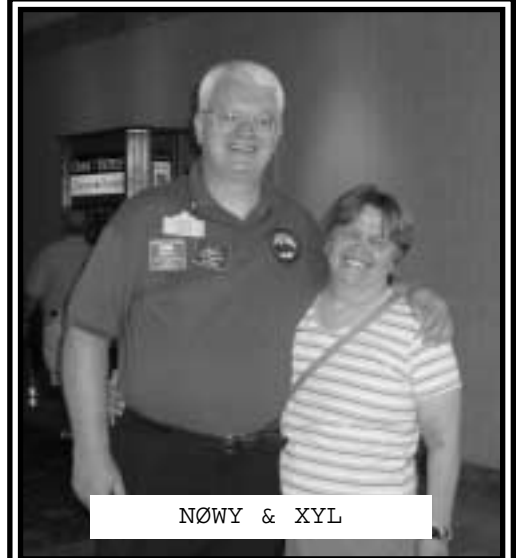
N5MT & XYL

## MORE PICTURES FROM SAN ANTONIO

Photos on this page by WD5C Larry Porterfield



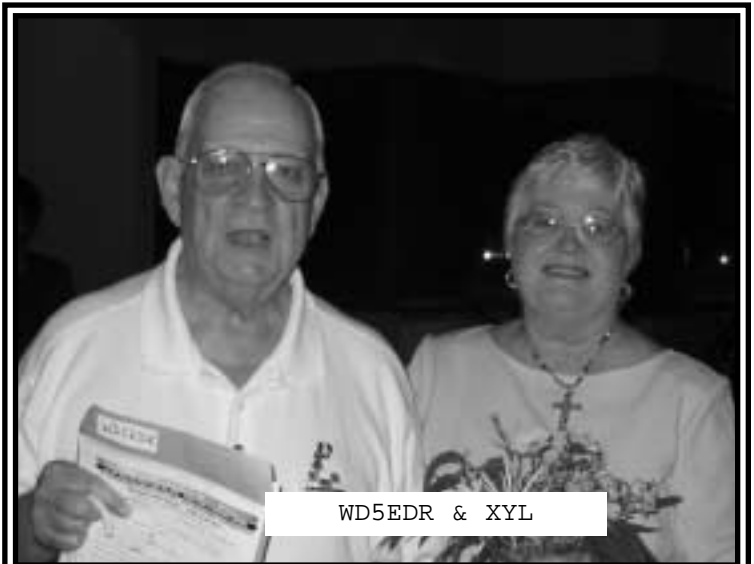
DF3TE, DH1PAL, Allison Porterfield, KM5FF & XYL



NØWY & XYL



W6YLJ & KB6HW



WD5EDR & XYL



DJ3LA & DK7LA



AA7PW & KA5OVO



WA9TSG

## MORE PICTURES FROM SAN ANTONIO

Photos on this page by NØWY Steve Rasmussen



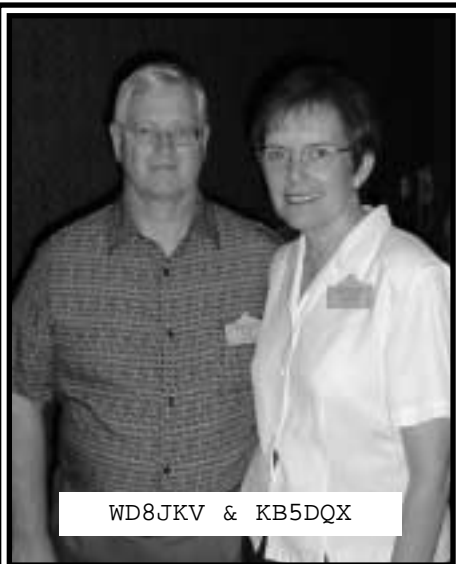
G4YNO & KC4RHW



K7PVZ



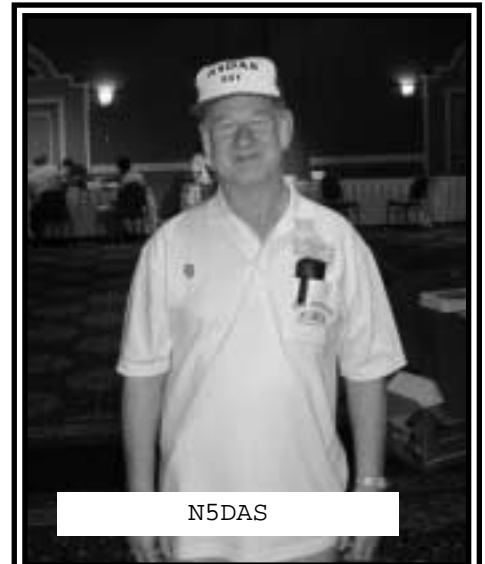
KM5EH & NØVYY



WD8JKV & KB5DQX



N3NOP



N5DAS

# NEW CONTEST RULES AS OF JANUARY 1, 2004

Here is the culmination of several weeks of effort by the Contest Committee, the Board of Directors, and Legal Counsel. So many adjustments and unanswered questions brought about the complete rewrite of these rules, bringing them in line with more standardized practices.

One of the most drastic changes was dropping the requirement of sending in proof of membership. With the advent of data management software, the Contest Manager now has direct access to all of the most up-to-date information from the Ten Ten database, making the checking of current membership an easy task. This paved the way for another outstanding innovation. That of e-mailing logs. The Contest Manager has been in discussion with several contest software writers and has created a standardized 10-10 cabrillo design. This will make it easier to download the logs in a common format. It will also make the requirement of a dupe sheet unnecessary, as the logs can be electronically dupe checked. If you are a software developer, or know of one who has, or wants to, create a 10-10 contest entry in their program, or just want to know the basic format, drop the Contest Manager a line, letter or e-mail. The new format is not required, but would help in processing your log. If you don't have a program but still want to send electronically, any basic text file such as Notepad will do.

If you are NOT going to send electronically, a dupe sheet is still required for logs over 50 contacts. Dupe sheets now consist of either a list of contacts in callsign order, or entered on a callsign grid. A callsign grid is easy to make. Just take a sheet of paper and make a grid as shown at the right. When you work a callsign, put that callsign in the grid by the call area number and the first letter of the suffix. Example is VE7ACM goes in 7A. 6Y5DA goes in 5D (6Y is the prefix).

It was determined, since a Club is an entity of three or more members, that at least two of those members should get together at the same location and actually operate a club entry. Also, if the operators additionally give out their own calls during the contest, each of them may also send in an Individual log for the contacts they made with their own call.

In the past, there was a ground wave requirement for being able to assign your score to a Chapter. Now that requirement has been lifted and an operator may assign his or her score to any one Chapter they are a member of.

Finally, the Mobile and Anniversary Parties are now permanent and part of the Contest Rules.

	ABC	DEF	GHI	JKL	MNO	PQR	STU	VWX	YZ
1									
2									
3									
4									
5									
6									
7									
8									
9									
0									

## 6.2 10-10 QSO PARTIES

10-10 QSO Parties are contests that are held for fun and to meet old, new and prospective members around the world. The rules listed here are for all general QSO parties. The Anniversary and Mobile QSO Parties are specialty contests and do have additional rules.

### 6.2.1 WHO IS ELIGIBLE?

Contests are open to all amateurs with operating privileges on the 10 meter band, however logs will be accepted only from active members as of the date of the contest. Other logs received will be handled as checklogs. Checklogs are used to validate (check) other logs but do not receive awards.

### 6.2.2 WHEN ARE THE QSO PARTIES?

There are currently five QSO Parties held through the calendar year:

Winter Phone Contest - held on the first full weekend in February

0001 UTC Saturday through 2359 UTC Sunday.

Spring CW Contest - held on the first full weekend in May

0001 UTC Saturday through 2359 UTC Sunday.

Summer Phone Contest - held on the first full weekend in August

0001 UTC Saturday through 2359 UTC Sunday.

Sprint - a 24 hour contest held on October 10th (10/10)

0001 UTC through 2359 UTC.

Fall CW Contest - held on the last full weekend in October

0001 UTC Saturday through 2359 UTC Sunday.

### 6.2.3 FREQUENCY AND MODES

Direct unassisted contacts only are permitted. Repeater, Satellite, IRLP or any other similar types of assisted contacts are NOT allowed.

CW Contests should be operated in the CW portion of the 10 meter band and operated using CW and/or any Digital mode (RTTY, PSK, etc).

Phone contests must be operated in the PHONE portion of the 10 meter band and may be operated using any approved Phone method (SSB, FM, AM).

The SPRINT utilizes both CW and Phone portions of the 10 meter band.

**NOTE: A QUIET ZONE between 28.490 and 28.510 shall be in effect during contests using the Phone portion of the 10 meter band to allow for non-contest use of the band.**

### 6.2.4 ENTRY CLASSIFICATION

Entrant may submit a log in ANY of the following classifications:

INDIVIDUAL: includes single station operators and can also include OM/XYL teams or any families or groups of people using individual call signs and 10-10 numbers.

QRP: same as an individual as listed above except that output power does not exceed 5 watts with CW/Digital operations and/or 10 watts with Phone operations during the entire contest.

CLUB: A Club must have a valid FCC club station license and active 10-10 membership and be operated by a minimum of two active members of 10-10 who are also members of the club submitting the entry. Club entries must additionally list the call, name and 10-10 number for all operators. Operators entering under a club entry may also enter an individual log for contacts made using their own call sign.

### 6.2.5 TRANSMITTER INFORMATION

An operator may operate mobile, portable or fixed. If they change their exchange QTH during the contest, the operator must show same in their log. The operator may enter a log from only one call district, province, or DX country. Multi-transmitters (two or more transmitters operating simultaneously, sharing one call sign) are NOT permitted in any QSO

Party. If a single transmitter becomes inoperable, it is permissible to change to a replacement transmitter.

## 6.2.6 EXCHANGE

10-10 members send call sign, name, 10-10# and QTH (State, Province or Country). If received exchange does not have a 10-10#, then record a zero[0] in the log.

## 6.2.7 QSO POINTS

Two (2) points are awarded for contacts WITH a 10-10 number.  
One (1) point is awarded for contacts WITHOUT a 10-10 number.  
Duplicate entries should be retained in log and show a zero[0] for points.  
Any log showing 10% or more errors may be handled as a checklog.  
A station may be counted only once regardless of mode.

## 6.2.8 CHAPTER SCORE ASSIGNMENT

Except for the Sprint, any active member may assign his/her score to any single affiliated 10-10 chapter of which he/she is a member.

## 6.2.9 CONTEST ENTRIES

Logs shall be forwarded to the Contest Scorer as identified in the 10-10 NEWS or on the 10-10 web site. It is strongly suggested that logs be sent as soon as possible after the close of the contest. It is also recommended that DX logs should be sent AIR MAIL to insure they are received in good time. Any logs received with a postmark date AFTER the deadline date will be handled as a checklog. Any logs received more than 15 days after the contest entry deadline, regardless of postmark, will be discarded.

### 6.2.9.1 ENTRY DESCRIPTION

Entries must contain a Cover Sheet, Log, and Dupe Sheet as described here:

COVER SHEET will list the Event Entered, Entry Classification, US Call Area (W0-W9) or DX Country, Chapter Score Assignment (if any), number of contacts and points with 10-10#, number of contacts and points without 10-10#, and total contacts and points claimed.

LOG must be listed in date/time order and list UTC Date, UTC Time, Call, Name, 10-10# (zero [0] if none), QTH and Contact Point Value.

DUPE SHEET is required for any logs exceeding 50 contacts. It may be either a list of all calls contacted in call sign order, or hand entered on a dupe sheet grid.

### 6.2.9.3 ENTRY DEADLINE

Entries for all contests listed EXCEPT the Sprint shall be postmarked no later than 15 calendar days (this will always be a Monday) after the close of the contest. Mailed entries for the Sprint (held on 10/10) shall be postmarked no later than October 25th, unless that day falls on a Sunday, then the postmark deadline shall be October 26th.

## 6.2.10 CONTEST RESULTS AND AWARDS

Contest results will be posted on the 10-10 web site about 15 days after the closing deadline for the contest, and also printed in the 10-10 NEWS in the appropriate issue. Awards will be issued by the certificate manager for Top Ten Individual scorers in the World, the top Individual scorer in each US Call Area (W0-W9) and each DX Country, and for top QRP, CLUB and CHAPTER.

## 6.2.11 ANNIVERSARY QSO PARTY

This event runs from January 1 0001 UTC to December 31 2359 UTC. Entrants may submit a log of contacts with members that have 10-10's anniversary year contained in their membership number.

Example: 2002 is the 40th anniversary year of 10-10 International

Net, Inc. Contact with members containing a "40" in their membership number (i.e., 72040, 69405, 64054, 40126, 00407) would count toward the contest. Each year the anniversary number changes, making a new group of members the focus of the contest and promoting the use of the 10-meter band. All general rules are applicable with the following exceptions:

During the calendar year (January 1 through December 31) make legal 10-10 contacts with 10-10 Number, Date, Call Sign, Name, QTH, with members containing the anniversary year in their membership number as described above.

Contacts must be made on the 10-meter band with any legal mode (AM, SSB, FM, PSK, CW, etc.) but all contacts must be made direct and unassisted. NO repeater, satellite, or Internet assisted contacts are permitted. The contact mode must be recorded in the log entry.

All submitted logs must contain only one entry for each 10-10 number contacted. Contacts MUST be listed in 10-10 number order and each entry must list the 10-10 Number, Date, Call Sign, Name, QTH and Mode, in that order.

This contest is for Individual entries as described in section 6.2.4 and certificates will be awarded for the Top Ten, however all entrants will be listed in the 10-10 NEWS.

Logs shall be forwarded to the Contest Scorer as identified in the 10-10 NEWS or on the 10-10 web site. Logs MUST be postmarked no later than January 15th of the year following the anniversary contest year entered. Only members in good standing (with dues paid) are allowed to submit logs.

## 6.2.12 MOBILE QSO PARTY

This event is held on the third Saturday in March from 0001 to 2359 UTC. All general rules are applicable with the following exceptions:

Fixed stations contact mobiles, mobiles contact everyone. Mobile applies to vehicular, marine, aeronautical or other mode of transportation. If in doubt, contact the Contest Manager. A station operating a mobile entry must be a true mobile. Sitting in the driveway and using the base station antenna or amplifier, or using commercial power is not permitted. RV generators are permitted only if the generator is used while in transit (moving).

Operation while your vehicle is parked across a county line, occupying two counties, counts as two counties and two contacts. Marine and aeronautical mobiles must be able to establish counties of operation.

The contest exchange shall be Call, Name, State, 10-10 Number (if a member, zero(0) if not), and county (if applicable). Only counties in the USA, Canada and England may be used as a multiplier.

Count one point for each contact whether a member or not. Fixed stations multiply the number of contacts by the number of different counties worked. Mobile stations multiply the number of contacts by the number of different counties worked PLUS a bonus of the number of counties worked from.

All stations must submit separate logs for the counties worked from. Log scores will be combined by the contest manager.

Logs shall be forwarded to the Contest Scorer as identified in the 10-10 NEWS or on the 10-10 web site. Logs MUST be postmarked no later than 14 days after the end of the contest. Only members in good standing (with dues paid) are allowed to submit logs.

## 6.2.13 FOR MORE INFORMATION

Current information about 10-10 and upcoming 10-10 QSO Parties is always available on the 10-10 web site. Contest cover sheets, logging forms and dupe sheets are also available for downloading or printing. The address is <http://www.ten-ten.org>

Any unanswered questions regarding the QSO Party rules may be forwarded to the Contest Manager.

## 10-10 INTERNATIONAL NEWS

## TEN TEN CONTEST RESULTS

## Sprint

October 10, 2003

## TOP TEN

CALL	1010#	CONTC TS	PTS
N6OPR	45715	302/105	709
K5FBS	48461	249/071	569
N5MT	24949	239/090	568
N2EOC	37549	200/100	500
AD6RO	73843	154/052	360
KJ7RF	69390	169/017	355
K3TC	33876	132/072	336
AB0MV	69692	135/044	314
AE0Q	72165	135/044	314
WJ5O	37215	139/029	307

## CALL AREA 0

CALL	1010#	CONTC TS	PTS
AE0Q	72165	135/044	314
AB0MV	69692	135/044	314
N0WY	68684	040/007	087
WA6POZ	21274	035/010	080
KB0RQE	67938	028/007	063
KB0TFT	68306	028/006	062
W0LPZ	73127	017/009	043
N0CUN	33031	018/000	036
W9HZC	73090	013/002	028
WB0QKN	16069	014/000	028
KC0OED	73884	012/003	027
KA0EIC	47285	012/001	025
WB0AEA	73866	008/004	020
KN0E	73355	005/001	011
KB0QCR	69096	003/000	006

## CALL AREA 1

CALL	1010#	CONTC TS	PTS
W1AMF	43006	105/049	259
WW3K	70376	078/016	172
N1PDV	63955	065/006	136
AA1KS	56510	038/003	079
W1SIX	35346	038/001	077
N1STE	65471	029/000	058

## CALL AREA 2

CALL	1010#	CONTC TS	PTS
N2EOC	37549	200/100	500
KC2HZW	72785	054/007	115
W2KRK	29308	022/006	050

## CALL AREA 3

CALL	1010#	CONTC TS	PTS
K3TC	33876	132/072	336
KA3VDN	56869	077/004	158
N3TGB	68129	052/007	111
WB3LKO	28777	034/003	071
K3NJ	67398	031/007	069
KA3NMB	53417	033/000	066
NA3H	30502	028/007	063
W3PWG	01538	029/002	060
WB3BMA	14393	021/005	047

K3TUJ	07561	016/000	032
KC3T	68155	014/000	028
N3FSC	46927	012/002	026
WA3JXW	04377	010/000	020

## CALL AREA 4

CALL	1010#	CONTC TS	PTS
WA4EEZ	15675	111/021	243
WN4AMO	73825	085/011	181
KC7OC	67668	072/005	149
KC4RIY	58203	051/004	106
WB5WAJ	26676	044/006	094
K9EHP	02847	043/003	089
K4HAV	17605	040/002	082
K4YI	70848	032/012	076
K4RKN	72771	036/003	075
K4DRZ	53657	035/004	074
N4JED	49049	030/000	060
WA4OSD	73477	029/002	060
K4PZC	69074	029/001	059
KE4MDJ	73910	027/003	057
N2EGO	37582	023/004	050
KF4WER	71949	022/002	046
KN4Y	17757	008/029	045
AG4TO	73034	016/001	033
WA4JA	72743	012/000	024

## CALL AREA 5

CALL	1010#	CONTC TS	PTS
K5FBS	48461	249/071	569
N5MT	24949	239/090	568
WJ5O	37215	139/029	307
N5WYR	62116	110/023	243
W5GVP	11572	103/030	236
KC5RPF	70914	071/020	162
WX5I	67839	052/001	105
K5SP	72243	040/002	082
KD5HIP	71476	040/001	081
K0OOK	73695	037/002	076
KN5GRK	71742	035/004	074
K5DE	33513	034/000	068
W5SSG	73864	030/006	066
KM5FF	50356	025/007	057
NK5W	64094	023/004	050
WA5ZJK	04437	021/000	042
KC5GXL	67011	020/001	041
AA5XQ	60006	010/000	020
KF5LO	72289	007/000	014

## CALL AREA 6

CALL	1010#	CONTC TS	PTS
N6OPR	45715	302/105	709
AD6RO	73843	154/052	360
WA6CDO	72240	134/024	292
K6VMN	31623	111/019	241
WB6OJB	70675	085/016	186
AC6PX	65823	082/011	175
KG6BOV	69136	079/012	170
WB6NFO	44670	073/018	164
W6ASP	73446	065/009	139
KJ6IJ	08940	048/007	103

KJ6DB	71092	047/003	097
W6VFA	70281	036/004	076
WA6VLS	27158	012/001	025
K6EON	08838	004/000	008

## CALL AREA 7

CALL	1010#	CONTC TS	PTS
KJ7RF	69390	169/017	355
AC7GP	68357	137/019	293
WG7Y	40647	107/051	265
N7HDB	39650	129/007	265
KA7ICF	46221	120/021	261
W6AEA	68082	122/016	260
WA7HYD	72769	110/020	240
WB7X	73847	103/025	231
K7WV	70018	103/015	221
N7RAA	73827	098/020	216
KC7DH	52099	105/004	214
W0PEL	14301	078/009	165
KD7PQP	73545	068/016	152
N7VLM	66308	045/001	091
N7VS	60964	039/004	082
AC6FU	10937	029/004	062
N0QFV	07068	022/000	044
KI7XA	65758	020/001	041
AB7HW	69042	017/000	034
KC7MIQ	68800	014/001	029
W7GSV	07673	007/000	014

## CALL AREA 8

CALL	1010#	CONTC TS	PTS
KB8UUZ	67605	059/013	131
N0TW	36547	040/002	082
W8AP	10064	027/001	055
K8IZK	73889	019/001	039
N8ST	69681	011/000	022
W8KNO	71899	008/001	017

## CALL AREA 9

CALL	1010#	CONTC TS	PTS
WB9OMC	55959	038/002	078
K9COE	71928	033/004	070
K9OB	69071	025/001	051
WA8KAZ	72339	023/000	046
W9SFH	41267	019/001	039
N9ASC	28018	017/000	034
AA9WP	73283	010/000	020

## ARGENTINA

CALL	1010#	CONTC TS	PTS
LU5HE	10334	091/049	231

## AUSTRALIA

CALL	1010#	CONTC TS	PTS
VK6PP	38922	006/000	012

## BELGIUM

CALL	1010#	CONTC TS	PTS
ON4CN	42094	010/042	062

## BRAZIL

CALL	1010#	CONTC TS	PTS
PY2DBU	08264	006/001	013

## CANADA

CALL	1010#	CONTC TS	PTS
VA7TEN	24752	123/034	280
VE7AAP	50407	021/000	042
VE2HAY	73620	018/000	036
VE6MRT	20108	015/000	030
VE7ACM	30939	006/000	012

## COSTA RICA

CALL	1010#	CONTC TS	PTS
TI2/KG4DOE	71842	045/010	100

## FRANCE

CALL	1010#	CONTC TS	PTS
F6IRG	39399	030/005	065

## GERMANY

CALL	1010#	CONTC TS	PTS
DJ2YE	68904	011/000	022

## HAWAII

CALL	1010#	CONTC TS	PTS
KH6CQ	59894	012/003	027

## JAPAN

CALL	1010#	CONTC TS	PTS
JH7RTQ	69817	007/000	014

## PANAMA

CALL	1010#	CONTC TS	PTS
HP3XBS	63440	085/019	189

## PUERTO RICO

CALL	1010#	CONTC TS	PTS
KP4GSC	70872	005/000	010

## SWITZERLAND

CALL	1010#	CONTC TS	PTS
HB9ACA	25993	032/004	068

## QRP

CALL	1010#	CONTC TS	PTS
N0ZNA	66810	042/014	098
AD5IF	73372	031/002	064
VE5BCS	42027	015/000	030

## CLUB

CALL	1010#	CONTC TS	PTS
K7AZX	70527	179/044	402
K7YY	73461	010/002	022
N7LC	68960	010/002	022

## CHECK LOGS RECEIVED

CALL	1010#	CONTC TS	PTS
W4TMM	70432	046/005	097
VA7MJR	00000	008/000	016



# 10-10 INTERNATIONAL NEWS

## T E N T E N C O N T E S T R E S U L T S

### FALL CW-Digital

October 25-26, 2003

#### TOP TEN

CALL	1010#	CONTC TS	PTS
KN4Y	17757	086/092	264
W4SKW	68872	059/032	150
AE0Q	72165	051/019	121
W2GHH	00575	052/010	114
WB7X	73847	045/013	103
ON4CN	42094	018/066	102
N2EOC	37549	042/008	092
KJ4RV	37776	034/016	084
N4ERM	34524	033/010	076
W1DLC	72002	030/008	068

#### CALL AREA 0

CALL	1010#	CONTC TS	PTS
AE0Q	72165	051/019	121
W2GHH	00575	052/010	114
N0WM	02724	018/007	043
W0RTV	13962	017/005	039
N0WY	68684	003/004	010

#### CALL AREA 1

CALL	1010#	CONTC TS	PTS
W1DLC	72002	030/008	068
K1TG	60188	024/007	055
AA1KS	56510	020/007	047

#### CALL AREA 2

CALL	1010#	CONTC TS	PTS
N2EOC	37549	042/008	092
W2VTV	71275	022/011	055

#### CALL AREA 3

CALL	1010#	CONTC TS	PTS
N3FSC	46927	006/005	017
WA3JXW	04377	004/002	010
K3TUJ	07561	005/000	010

#### CALL AREA 4

CALL	1010#	CONTC TS	PTS
KN4Y	17757	086/092	264
W4SKW	68872	059/032	150
KJ4RV	37776	034/016	084
N4ERM	34524	033/010	076
KR4OE	62657	029/005	063
W4GTM	66628	016/012	044
N4EWG	29730	016/002	034
KL7NL	62595	014/003	031
KE4HW	32054	012/006	030
KU4W	20986	012/001	025
WA4EEZ	15675	011/001	023
AA4PR	39481	009/000	018
K4RKN	72771	007/000	014
KC4JAN	56060	004/000	008
AA4VB	73901	003/000	006

#### CALL AREA 5

CALL	1010#	CONTC TS	PTS
AB5X	04683	020/014	054
WD5EDR	23693	025/004	054

K5CC	50708	024/002	050
K5FBS	48461	020/002	042
KD5RFC	73467	006/001	013
N5MT	24949	001/001	003

#### CALL AREA 6

CALL	1010#	CONTC TS	PTS
AD6RO	73843	024/009	057
KI6OY	50948	008/001	017

#### CALL AREA 7

CALL	1010#	CONTC TS	PTS
WB7X	73847	045/013	103
AA7FK	53104	030/004	064
K7WV	70018	006/001	013

#### CALL AREA 8

CALL	1010#	CONTC TS	PTS
W8JSM	00934	024/017	065
W8PJY	14574	019/007	045
W8LBQ	08886	004/001	009

#### CALL AREA 9

CALL	1010#	CONTC TS	PTS
K9CS	40531	025/009	059

#### BELGIUM

CALL	1010#	CONTC TS	PTS
ON4CN	42094	018/066	102

#### CANADA

CALL	1010#	CONTC TS	PTS
VE5BCS	42027	017/006	040

#### GERMANY

CALL	1010#	CONTC TS	PTS
DL5MC	70312	018/005	041

#### PANAMA

CALL	1010#	CONTC TS	PTS
HP1AC	10107	012/001	025

#### QRP

CALL	1010#	CONTC TS	PTS
AA3S	71035	012/012	036

#### CHAPTER SCORES

CHAPTER	LOGs	PTS
PossumTrot	11	525
ColoCentennial	1	121
C.A.T.T.	3	119
ArizonaDesert	1	103
Borinage	1	102
Trotters&Pacers	1	092
Gateway	2	082
CityOfRoses	1	064
CastleCraig	1	055
StxLtHorseBrig	1	054
CastIronTower	1	041
Windfarms	1	017
FtMcHenry	1	010
S.H.O.T.	1	003

#### CHECK LOGS RECEIVED

CALL	1010#	CONTC TS	PTS
DL0ERF	00000	002/000	004

## 2004 CONTEST DATES

	CONTEST	POSTMARK
Winter Phone	.....Feb 7-8.....	Feb 23
Mobile Contest	.....Mar 20.....	Apr 3
Spring CW	.....May 1-2 .....	May 17
Summer Phone	.....Aug 7-8.....	Aug 23
Sprint	.....Oct 10 .....	Oct 25
Fall CW	.....Oct 30-31 .....	Nov 15

### NOTICE!

**NEW Contest Rules are now  
in effect. See pages 18-19  
for new rules!!!**

## W6OI #109 ON THE AIR

The 10-10 Club Station, W6OI #109, is available to any current (dues paid) 10-10 member or chapter for use as a special event station such as Field Day, Chapter gatherings, and Radio Conventions. Send a written application and copy of your amateur license to include dates and purpose of operation to:

**JACK MOORE, K5CC**  
**W6OI LICENSE TRUSTEE**  
**371 RIDGE CREEK LN**  
**BULVERDE TX 78163**

QSL cards are available for special events.

W6OI was on the air during the 10-10 Sprint on Oct 10 and during the Fall CW contest on Oct 25-26. On Sep 14 Bruce Thompson (WB7RHT #73057) operated W6OI during the Annual FISTS Coast to Coast contest. Louise Chapman N6ELK #36654 operates W6OI each Wednesday as the 10-10 Net Control beginning at 1800Z on 28.800 MHz. Please include a SASE when requesting a W6OI QSL card via:

**LOUISE CHAPMAN, N6ELK**  
**310 CLARK AVE**  
**LONG BEACH CA 90808**

Paperchasers working W6OI can request the chapter list from K5CC. For CW operators, W6OI has a FISTS number.

# Net Manager NET NEWS

**BILL MARPLE**  
**AA7ZW #62075**



Happy New Year to all. It's amazing how fast 2003 has gone by. It seems as if we just started the year, and now it's over. Hopefully 2004 will slow down a little. I think that is wishful thinking.

We need to review some net protocol, due to some continuing problems we are having. These problems are causing many stations to miss contacts, as well as adding an extra workload on the net controllers. If you benefit from anything in this article, hopefully it will be these suggestions.

Some things to do and not to do that will greatly improve the quality of the nets.

Listen before you call. Net control will advise when a check in list will be taken. Don't interrupt contact sessions by calling for check in.

Keep transmissions short during contacts. If you want to have a longer QSO, then please QSY off the net frequency.

During check in sessions, copy down the information of the stations that you have heard that you want to work. This will help keep the net running smoothly, and keep repeats to a minimum.

If you hear a station calling for check in that net control, or his/her relay station does not hear, please simply call "RELAY", and net control will acknowledge you as soon as possible.

Don't call another station without net control authorization. All 10-10 nets are directed nets, which means that net control will authorize contacts.

Don't repeatedly call "check in, check in, check in, or contact, contact, contact". This won't get you checked in any faster, and usually causes missed contacts or failed check-ins due to the QRM associated with this type of calling. In many situations, net control may not be able to hear you, even though you can hear net control. Weak signals, especially from QRP or some mobile stations, will cause enough interference to block signals but not be strong enough to be understood.

Remember that if you miss a contact or a check in today, there is always tomorrow.

As most of you know, Alan, VE4ALN #69217 has been recovering from heart surgery. I am happy to say that he is doing very well, and has been checking in on a regular basis. Doctor's

## QUARTERLY NET REPORT

*July, August and September 2003*

28.380			28.800			28.380			28.800			28.380			28.800		
MONDAY NETS						WEDNESDAY NETS						FRIDAY NETS					
DATE	TOTAL	w/o 10x#	DATE	TOTAL	w/o 10x#	DATE	TOTAL	w/o 10x#	DATE	TOTAL	w/o 10x#	DATE	TOTAL	w/o 10x#	DATE	TOTAL	w/o 10x#
07-07	2	0	07-07	24	0	07-02	4	0	07-02	21	0	07-04	3	3	07-04	15	0
07-14	1	0	07-14	14	0	07-09	6	1	07-09	23	0	07-11	12	1	07-11	15	0
07-21	1	0	07-21	27	0	07-16	2	0	07-16	18	0	07-18	21	2	07-18	19	0
07-28	2	0	07-28	14	0	07-23	2	0	07-23	28	0	07-25	20	0	07-25	17	0
08-04	3	1	08-04	28	0	07-30	2	0	07-30	13	0	08-01	3	0	08-01	10	0
08-11	2	0	08-11	17	0	08-06	1	0	08-06	17	0	08-08	4	0	08-08	16	0
08-18	5	1	08-18	10	0	08-13	2	0	08-13	18	0	08-16	3	0	08-15	14	0
08-25	2	0	08-25	16	0	08-20	1	0	08-20	10	0	08-22	3	0	08-22	9	0
09-01	25	3	09-01	25	0	08-27	3	0	08-27	16	0	08-29	3	0	08-29	14	0
09-08	1	0	09-08	12	0	09-03	1	0	09-03	15	0	09-05	10	0	09-05	3	0
09-15	5	0	09-15	16	0	09-10	1	0	09-10	20	0	09-12	5	0	09-12	14	0
09-22	6	1	09-22	24	0	09-17	4	0	09-17	17	0	09-19	12	1	09-19	20	0
09-29	23	3	09-29	28	0	09-24	14	2	09-24	30	0	09-26	1	0	09-26	23	0
TUESDAY NETS						THURSDAY NETS						SATURDAY NETS					
07-01	5	0	07-01	12	2	07-03	9	1	07-03	22	2	07-05	1	0	07-05	10	4
07-08	13	1	07-08	16	2	07-10	30	0	07-10	24	2	07-12	3	0	07-12	17	2
07-15	17	2	07-15	21	2	07-17	9	0	07-17	21	0	07-19	30	0	07-19	16	4
07-22	9	0	07-22	21	1	07-24	9	1	07-24	20	0	07-26	15	0	07-26	11	0
07-29	7	0	07-29	14	0	07-31	5	0	07-31	19	0	08-02	2	0	08-02	14	0
08-05	4	0	08-05	9	0	08-07	17	0	08-07	10	0	08-09	8	0	08-09	12	2
08-12	3	0	08-12	7	0	08-14	16	0	08-14	3	0	08-16	12	0	08-16	15	0
08-19	8	1	08-19	31	1	08-21	14	0	08-21	2	0	08-23	3	0	08-23	10	1
08-26	19	4	08-26	5	0	08-28	11	0	08-28	2	0	08-30	2	0	08-30	12	0
09-02	5	0	09-02	4	0	09-04	19	0	09-04	6	0	09-06	2	0	09-06	11	0
09-09	4	0	09-09	8	0	09-11	13	0	09-11	4	0	09-13	2	0	09-13	7	0
09-16	5	0	09-16	5	0	09-18	19	1	09-18	30	0	09-20	2	0	09-20	15	0
09-23	3	0	09-23	2	0	09-25	57	6	09-25	10	1	09-27	2	0	09-27	23	1
09-30	7	1	09-30	37	0												

## 10-10 INTERNATIONAL NEWS

orders permit him to operate for no more than 30 minutes for now, but he should be back in the saddle soon. In the interim, I am calling his net on Friday, on 28.800. I know we all wish Alan a continued speedy recovery.

Also, Bob, N6OPR #45715 has had a brief encounter with the medical profession. He had his ticker worked on, and has a couple of stints installed to prove it. Bob was back on the air the day following his discharge, working stations on the net. Glad you are back, and doing well Bob.

I want to express my sincere appreciation to everyone who has been assisting our net controllers in providing relays. Without your help, there would be a much heavier workload on the nets, and I am sure many stations would not be able to check in or make contacts. Thank you one and all.

Lastly, an open comment to all members. We do not ignore any stations that want to check in on our nets. If you have tried to check in, but have not been acknowledged, then you have not been heard. Had you been heard, you would have been checked in. With the number of relay stations available, coverage is very good and unless conditions are bad, someone should hear you. Keep trying, and remember, patience is a virtue.

Oh yes, one more thing. VOTE. For what, you ask? Net controller of the year for 2003. Think about the net controller you feel has contributed the most for 10-10 during this year. Cast your

vote for that individual, and send to me via e-mail or snail mail. I would like to have all votes in by May 1, so we can prepare a plaque for the recipient.

I just received this letter from George WD4GEO and felt that you all should see his comments. Great work by all my net controllers and relay stations. This type of professionalism is what makes 10-10 great! I am very proud of all of you!

*Hi Bill*

*I just wanted to express my appreciation for the effort that has been displayed by the net controllers and relays for the 10-10 International Net. I have been able to work only as a mobile since my base was damaged by severe lightning during the summer. Even though it has been somewhat difficult to hear me at times, net control operators and relays have made it possible to get me checked into the net and participate has been one of the best things for me about 10-10. The effort that is shown by all net controllers has made this a very enjoyable experience.*

*73, George WD4GEO*

Until next issue, I wish you good DX, and 73



Heinz DK8GH #27218 sends us a picture of himself and his well equipped radio shack. Thank you Heinz!!! If you would like to see your picture in the NEWS - please send a standard photo with any comments on a separate piece of paper. Do NOT write on the back of the photo as it will show through. You may send a digital file if you take the picture at the highest resolution possible. Send to the Editor - address on page 2.

# 10-10 AWARDS

To apply for any 10-10 Award, proof of paid-up membership is mandatory. A copy of your membership card or address label from the latest copy of the 10-10 International News must be sent with your application. An application listing the rules for each award is available from the appropriate Award Manager listed below. Please send your request with a #10 (business size) envelope, self-addressed and stamped with one unit of first class postage (or enclose one IRC for GB Award), to the Award Manager for the Award you are interested in obtaining. Please no phone calls to Award Managers for an application or list of rules. Rules for all Awards are also available on the 10-10 web site located at <http://www.ten-ten.org>

## TOP TEN HONOR ROLL

Award Manager:  
Doris Slye  
N3TGB #68129

#	CNTCS	CALL	10-10#
01	24600	WA5JDU	03017
02	20900	WB1DBZ	26001
SK	19400	W0RWC	00581
SK	17000	PJ2WG	27999
03	16700	W4WKQ	33299
04	16500	K5MRU	00218
05	14100	WB7NUU	17416
06	11600	K5GAY	11825
SK	11600	WA9LIC	01599
07	11500	K0PV	09902
SK	11400	N5CUQ	00040
08	10800	NS4M	41176
09	10600	W9IAI	35140
10	10200	KB0ON	29849

## 1000+ BAR AWARD

Award Manager:  
Doris Slye  
N3TGB #68129

CERT #	CALL	10-10#
1536	KB9NZX	68570

CERT #	CALL	10-10#
0091	PY2DBU	08264

## 500 BAR AWARD

Award Manager:  
Dan Morris  
KZ3T #41015

VP #	CALL	10-10#
3268	N4GCC*	73776
3269	AB0MV	69692
3270	N7YU	72571
3271	AD6RO	73843

\*correction from last issue

## LUCKY 13 AWARD

Award Manager:  
Dan Morris  
KZ3T #41015

CERT #	CALL	10-10#
452	WN4AMO	73825

## VP AWARD

Award Manager:  
Carl Fisher  
W0HIK #40678

CERT #	CALL	10-10#
041	AA1NC	67174

## VP100

CERT #	CALL	10-10#
532	WN4AMO	73825
533	N4JED	49049
534	KB9NZX	68570
535	KA9PCU	73562

## VP200

CERT #	CALL	10-10#
306	K7WV	70018
307	WN4AMO	73825

## VP400

CERT #	CALL	10-10#
143	AA1NC	67174
144	AJ5ZX	71083

## WORKED ALL CONTINENTS AWARD

Award Manager:  
Dick Corlew  
NC6V #25057

CERT #	CALL	10-10#
598	JF2IGP	64619
599	N5OHL	54043

## COUNTY HUNTER AWARD

Award Manager:  
Brad Kimble  
K0DBK #55192

CERT #	CALL	10-10#
496	AB0MV	69692
497	KG6BOV	69136

## 200 COUNTIES

CERT #	CALL	10-10#
312	KG6BOV	69136

## 300 COUNTIES

CERT #	CALL	10-10#
207	WN4AMO	73825
497	KG6BOV	69136

## 400 COUNTIES

CERT #	CALL	10-10#
153	K7WV	70018

## 700 COUNTIES

CERT #	CALL	10-10#
070	K9EHP	02847

## 800 COUNTIES

CERT #	CALL	10-10#
051	K9EHP	02847
052	N5WYR	62116

## 900 COUNTIES

CERT #	CALL	10-10#
038	K9EHP	02847

## 1400 COUNTIES

CERT #	CALL	10-10#
009	DL8YBM	36109



## DX COUNTRIES AWARD

Award Manager:  
Mike Davidson  
N5MT #24949

CERT #	CALL	10-10#
601	VK2VFV	38944

## 35 COUNTRIES

CERT #	CALL	10-10#
341	W4KEM	41824
342	VK2VFV	38944
343	WX5I	67839
344	WA4EEZ	15675

## 45 COUNTRIES

CERT #	CALL	10-10#
241	VK2VFV	38944
242	WX5I	67839

## 80 COUNTRIES

CERT #	CALL	10-10#
068	N6JQI	46305

## 110 COUNTRIES

CERT #	CALL	10-10#
032	K5FBS	48461

## GB COUNTIES & REGIONS CERTIFICATE

Award Manager:  
Mike Crawshaw  
G4BLH #18446

CERT #	CALL	10-10#
none reported		

# 10-10 AWARDS

## WPX (PREFIX) AWARD

Award Manager:  
Al Longo  
NN1J #41728

### 100 PREFIX

CERT #	CALL	10-10#
333	AB0MV	69692
334	AE0Q	72165
335	N4JED	49049
336	WA5SWN	72300
337	WN4AMO	73825

### 200 PREFIX

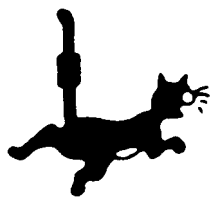
CERT #	CALL	10-10#
196	AB0MV	69692
197	N4JED	49049
198	WA5SWN	72300
199	WN4AMO	73825
200	WD6CKT	25002

### 300 PREFIX

CERT #	CALL	10-10#
107	N4JED	49049
108	WD6CKT	25002

### 400 PREFIX

CERT #	CALL	10-10#
051	WD6CKT	25002



## MOBILE AWARD

Award Manager:  
Ed Redwine  
K5ERJ #11843

### BASIC MOBILE AWARD

CERT #	CALL	10-10#
	none issued	

### 75 MOBILES

CERT #	CALL	10-10#
044	WN4AMO	73825

### 100 MOBILES

CERT #	CALL	10-10#
026	AA1NC*	67174
036	WN4AMO	73825

*\*missed in Jan 2003 issue*

## CW AWARD

Award Manager:  
Lee Zalaznik  
KI6OY #50948

### 25 CW CONTACTS

CW #	CALL	10-10#
078	AE0Q	72165
079	K5FBS	48461
080	W2KRK	29308
081	WA4EEZ	15675

### 50 CW CONTACTS

CW #	CALL	10-10#
008	N5MT	24949
078	AE0Q	72165

### 75 CW CONTACTS

CW #	CALL	10-10#
063	K5CC	50708
078	AE0Q	72165

## WORKED ALL STATES AWARD

Award Manager:  
Eva Donaldson  
WBØCON #53964

CERT #	CALL	10-10#
2460	N4TBZ	49026
2461	WN4AMO	73825

## OM/XYL AWARD

Award Manager:  
Marcus Lieberman  
KM5EH #71103

### BASIC - 10 TEAMS

CERT #	CALL	10-10#
461	KL7JGN	27834
462	KA4N	50786
463	WN4AMO	73825

### 25 TEAMS

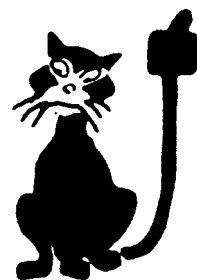
CERT #	CALL	10-10#
120	KL7JGN	27834

### 50 TEAMS

CERT #	CALL	10-10#
061	KL7JGN	27834



Got the winter doldrums? Sunspot cycle getting you down? Now's the time to go through all your logs and update your awards! Just go to the 10-10 website and download the rules and application for the award you want to get, fill it out and send it in! Don't have internet? Mail a #10 SASE to the manager for the award you are interested in.  
**IT'S EASY!**  
**IT'S FUN!!!**



## AWARD MANAGERS

<b>Bar 100-900</b> .....Dan Morris, KZ3T # 41015 .....	112 Royal Oak Ct., Lenoir, NC 28645 .....	(828) 728-5049.....	kz3t@charter.net
<b>Bar 1000+</b> .....Doris Slye, N3TGB #68129 .....	708 Doages Dr., Millersville, MD 21108-2132 .....	(410) 923-2811.....	n3tgb@aol.com
<b>VP Bar</b> .....Carl Fisher, W0HIK #40678 .....	5 Angelina Dr., Augusta, KS 67010-2262 .....	(316) 775-5900.....	w0hik@aol.com
<b>VP WAS</b> .....Carl Fisher, W0HIK #40678 .....	5 Angelina Dr., Augusta, KS 67010-2262 .....	(316) 775-5900.....	w0hik@aol.com
<b>VP Lucky 13</b> .....Dan Morris, KZ3T # 41015 .....	112 Royal Oak Ct., Lenoir, NC 28645 .....	(828) 728-5049.....	kz3t@charter.net
<b>WAC</b> .....Dick Corlew, NC6V #25057 .....	3213 Carolyn Circle, Oceanside, CA 92054 .....	(760) 757-9284.....	nc6v@cox.net
<b>Counties</b> .....Brad Kimble, K0DBK #55192 .....	3855 66th St. E, Inver Grove Hts, MN 55076-2222 .....	(651) 450-1173 .....	k0dbk@arrl.net
<b>Countries</b> .....Mike Davidson, N5MT #24949 .....	3518 Bellefontaine St., Houston, TX 77025-1310 .....	(713) 668-8408.....	N5MT@aol.com
<b>CW</b> .....Lee Zalaznik, KI6OY #50948 .....	334 Olivina Ave., Livermore, CA 94551-6137 .....	(925) 455-0361 .....	lee.zalaznik@sbcglobal.net
<b>Mobile</b> .....Ed Redwine, K5ERJ #11843 .....	9 Yellowrose Lane, Augusta, KS 67010-2230 .....	(316) 775-5700 .....	k5erj@aol.com
<b>OM/XYL</b> .....Marcus Lieberman, KM5EH #71103 .....	2300 Hurley Drive NW, Albuquerque, NM 87120-1013 .....	(505) 836-1724 .....	buckm1@lobo.net
<b>WAS</b> .....Eva Donaldson, WBØCON #53964 .....	12933 W Montana Drive, Lakewood, CO 80228-4244 .....	(303) 989-0475.....	wb0con@comcast.net
<b>WPX</b> .....Al Longo, NN1J #41728 .....	PO Box 94, Springfield, ME 04487-0094 .....	(207) 738-3268 .....	nn1j@onperfect.com
<b>GB Counties</b> .....Mike Crawshaw, G4BLH #18446 .....	50 Kibble Grove, Brierfield, Nelson, Lancs, England BB9 5EW .....	01144 1282 613754.....	g4blh@zen.co.uk

# 10-10 SCHOLARSHIP FOUNDATION SUPPORTERS

The members listed below became 10-10 Scholarship Foundation Supporters during the months of September, October and November. We encourage all of our members to support the Foundation. The 10-10 Scholarship Foundation is a qualified 501(c)(3) tax exempt organization and therefore your contributions are tax deductible. If your employer will match your contribution, please let us know. Why not consider a chapter donation or an individual donation in memory of a fellow ham or loved one? If you haven't donated before, we want you to know that all donations, no matter how small, are appreciated and they do add up. Remember, if each active member would donate just one dollar, we'd make our goal with ease.

During this quarter Gini Segedi, N7HDB, #39650 made her contribution in memory of Ray Gomes, K9KKX, #4693. Agnes Goodman made a donation in memory of her husband Edwin, W7GYH, #19354. A special thanks goes to our Life Members who contributed half of our goal of funding five \$1000 scholarships. During 2004 we will be tracking donations by 10-10 Chapter, so please indicate the chapter to which you would like your donation to be credited.

W6VIF .....01121 .....Wendell Chapman  
K7OMK .....01407 .....Glen Harding  
W8TRX.....02500 .....Don Schwardt  
W4OGG .....03054 .....David Goggio  
K7SGQ.....03980 .....Dr. Harry Litts  
N5XZ .....04530 .....Allen Brier  
K0JPW .....04541 .....Donald Weaver  
W7GHT.....04760 .....William Smith  
WA2NBG.....05492 .....Rayman Mustafa  
WB8KQJ.....05830 .....Kenneth Buser  
K7OLH .....06368 .....Richard Chatfield  
WA8MJY .....07363 .....Ronald Gruninger  
W6YOO .....08237 .....Harry Hodges  
AE3Z.....08367 .....Don Kimble  
WA5FOE.....08402 .....Richard Spies  
K0KY .....08655 .....Dale Bagley  
K6EON .....08838 .....Thurman Laubhan  
W0OV .....09891 .....Carl Cain  
W7JYR.....10365 .....Roland Plotts  
W2IML .....14072 .....Robert Rhodes  
W0PEL.....14301 .....Charles Tatman  
W0MQA .....14328 .....W. Roy Krutchen  
WB9TRJ .....14889 .....Roland Armani  
KG6AK.....14972 .....John Vincent  
W4GER.....15466 .....Mary Allen  
WB6TFX .....19702 .....John Dolson  
W4KAR .....20210 .....Raimo Karjalainen  
K2XF .....21560 .....Seymour Miller  
N4VB .....23195 .....Josh Kelly  
AK7H.....24423 .....Edward Saftich

N5MT.....24949 .....Michael Davidson  
WA6PAC.....25645 .....Chester Rice  
KK4AZ .....25829 .....Robert Learmont  
N9ASC.....28018 .....Bill Seaborn  
W9CEO.....30439 .....Maurice Schietecatte  
KC7NY .....31424 .....Ken Campbell  
KB8PY .....31943 .....Norman Schmansky  
W1HIT .....32573 .....Arthur Davis  
KD6JC .....33704 .....Lovergne Irwin  
K3TC .....33876 .....Thomas Calomiris  
W2DG .....34849 .....Lloyd Cook  
N0BZM .....34967 .....Raymond Coffey  
W1SIX .....35346 .....Ernest Senter  
N5DAS.....35877 .....Raymond Dobson  
W6ZZN .....36607 .....Edward Cartotto  
WV4Y .....39409 .....Daniel Noe  
N7HDB .....39650 .....Gini Segedi  
N3LD .....42450 .....Lee Driscoll  
AB4HR .....42591 .....Charlie Akins  
KA0TAO.....43493 .....Larry Ochs  
W0RSD .....44354 .....Norman Hanson  
N5CLX.....45627 .....Elmer Nolte  
KB6SWH.....46332 .....Leonard Hardy  
KA3JKP.....46909 .....Leonard Morris  
KA0FJA.....47230 .....Harrison Scott  
KA0VTF.....47286 .....Cleo Boyer  
K8OPV .....47725 .....George Hodapp  
N4SOJ .....47824 .....Joseph Bednarz, Sr.  
N5MOC.....48606 .....Robert Miller  
W7DXM .....50225 .....Anita Powers  
K7CWS .....50288 .....Raynond Roberts  
KM5FF.....50356 .....Eddie Bryant  
K5CC .....50708 .....Jack Moore  
WT2Q .....52557 .....Robert Tublitz  
NU3N .....53455 .....Charles Powers  
WB0CON.....53964 .....Eva Donaldson  
KB5HRR.....54095 .....John Gorman  
NL7EX .....55633 .....Silas Hagler  
KA3WWG.....56860 .....Mary Jane Herrington  
N6SPY .....57258 .....Robert Hughes  
W1QU .....58517 .....Tom Donohue  
N8KOJ .....58807 .....Gene McCoy  
KB7NLI.....59926 .....Richard Taubert  
KB0BUQ.....61150 .....Harold Patchin  
KD4ABZ.....62609 .....Patricia Lovarco  
N3NOP .....63098 .....Robert Fulton, Jr.  
N6ZQC.....63106 .....Jerome Roebuck  
W8LE .....63659 .....Byrness Haworth  
AA3NA .....63774 .....John Clark  
KB0KVA.....63844 .....Carl Nielsen  
N1DO .....63993 .....Richard Olney  
KQ6KD .....64196 .....Dr. Irene Vrabel  
K5HFY .....65002 .....Claude Sessions, Jr.  
AC5HM .....65048 .....Calvin Jackson  
NE4TM .....65110 .....Tommy Melton



NE4LR .....	65111 .....	Lillie Melton
KB0GTW .....	65248 .....	Tom Uehling
KA1MLC .....	65411 .....	Charles McCarthy
KA5ZAB .....	66888 .....	James Van Deventer
K4OPN .....	67200 .....	Claude Burkhead, Jr.
W6WTJ .....	67320 .....	Robert Szentimrey
KB3ASC .....	68139 .....	Paul Schmeusser
K6CVK .....	69161 .....	Dr. William Olsen
NP2DJ .....	70090 .....	Deborah Thomas
WA6SBX .....	70598 .....	John Pritchard
K7GSW .....	70628 .....	Gordon Willis
WB6OJB .....	70675 .....	Dr. Arnold Kalan
KC5RPF .....	70914 .....	Kenneth Larsen
W2RKJ .....	70950 .....	R. Kevin Johnson
WH6LL .....	71259 .....	Charles Sharp
KD5HIP .....	71476 .....	John Zumbro
N6JOX .....	72025 .....	Paul Dickey
W6JEA .....	72061 .....	James Arnett
WA2ZOU .....	72643 .....	Robert Reed
WB5SYT .....	72658 .....	Jerry Thomason
KA1KOJ .....	72759 .....	Kevin Gilot
WA8MVU .....	73156 .....	Glenn Huber
KH6NZ .....	73595 .....	Hiroichi Muramoto
W4MIC .....	73641 .....	Michael Stafford
KB6CMO .....	73648 .....	Gene Thorpe
KI4AOC .....	73984 .....	Vincent Lombardo, Jr.

You too can become a 10-10 Scholarship Foundation Supporter, by making your check payable to the 10-10 Scholarship Foundation. Please send to:

**10-10 International Net Scholarship Manager**  
**Larry Berger WA2SUH**  
**9 Nancy Boulevard**  
**Merrick, NY 11566-3119**

## PINS PATCHES & DECALS

1" Pins - \$3.50 each or two for \$6.00  
 3" Patches - \$3.50 each or two for \$6.00  
 3" Decals - \$1.50 each  
**SPECIAL - one of each for \$7.00**

All shipments post paid (DX add \$1.00)

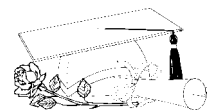
Please make your check or money order out to 10-10 International Net, Inc. and mail to:

**10-10 International Net Scholarship Manager**  
**Larry Berger WA2SUH**  
**9 Nancy Boulevard**  
**Merrick, NY 11566-3119**

*sale profits go to the 10-10 Scholarship Foundation*



## 10-10 SCHOLARSHIP APPLICANT INFORMATION



Each year the 10-10 International Net, through our non-profit corporation, the 10-10 Scholarship Foundation, funds five \$1,000 scholarships, which are administered on its behalf by the Foundation for Amateur Radio (FAR).

Diane Zimmerman AA3OF, Chairman of FAR's Scholarship Committee, announced the five most recent winners of the 10-10 Scholarships in the October 2003 10-10 International News. Over the past 15 years, 10-10 has funded 51 scholarships valued at \$46,000.

Applicants must be licensed Radio Amateurs having HF privileges. There is no restriction on the course of study, but applicants must intend to seek at least an Associate degree from a college or university. Non-U.S. Amateurs and those seeking graduate degrees are also eligible. Foreign members should be aware that students who study outside the United States are also eligible to receive a 10-10 Scholarship.

It is suggested that every 10-10 member encourage qualified college-bound radio amateurs to take advantage of this opportunity by requesting an application package by letter or QSL card prior to April 30, 2004 from the:

**Foundation for Amateur Radio**  
**P.O. Box 831**  
**Riverdale, MD 20738**

Applicants, except those who are active 10-10 members, must provide an endorsement from a current active 10-10 member (one whose dues are current).

Completed applications must be received by FAR prior to June 1, 2004.

Want to help a ham in their quest for higher education?

**Give to the Ten-Ten Scholarship Foundation!**

This is a 501(c)(3) tax exempt organization and therefore your contributions are tax deductible

For more information, contact:

**10-10 International Net Scholarship Manager**  
**Larry Berger WA2SUH**  
**9 Nancy Boulevard, Merrick, NY 11566-3119**

# 10-10 INTERNATIONAL NEWS

It is with sorrow that we note the following 10-10 members who are now Silent Keys. We extend our sincere condolences to the families and friends of these SK members whose calls and 10-10 number will forever be kept in the records of the 10-10 Net.

## Silent Keys

Compiled and listed by  
Ruth Bartholomew NØKDB #48715



00490....W4DWN.....Walter Dixon Jr.....Miami, FL  
00908....K1AVL.....Leo Antava.....North Smithfield, RI  
01182....K6KRG.....Willared Galbreath.....Pamona, CA  
01219....W8UPQ.....Woodrow Gill.....Charleston, WV  
01380....W1TG.....Andrew Sallet.....Nashua, NH  
02419....K1KYC.....Roland Jones.....Vernon, CT  
03305....K6IIS.....John Wood Jr.....Fontana, CA  
03679....W5VVO.....Robert Elioff.....Ruston, LA  
04098....W5NIG.....A.R. Wilson.....Mont Belview, TX  
05326....KH6TQ.....Sam Canevali.....Hilo, HI  
06060....W5YVT.....Phillip Goodman.....Marietta, GA  
07862....W2OJS.....Clifford MacAdams.....Schenectady, NY  
08056....WB0FKR.....William Alden.....Minneapolis, MN  
09407....W8JKN.....Richard Smith Sr.....Cincinnati, OH  
09808....W7CF.....Robert Donovan.....Bellingham, WA  
10202....K1MYF.....William Simmons.....Brooklyn, CT  
11770....W5FS.....Fred Siefert.....Albuquerque, NM  
12536....W9ODV.....Joseph Ash.....Sheboygan, WI  
13322....KG7F.....James Poore.....Cornelius, OR  
14159....WA2MSK.....Jack Geiger.....Parsippany, NJ  
16832....K3LDE.....Francis Treadwell.....Laurel, MD  
17076....WB5ZIP.....Paul Dooley.....Victorville, CA  
17981....AC6B.....Conrad Bluhm.....Yerington, NV  
19354....W7GYH.....Edwin Goodman.....Kennewick, WA  
21580....W2HAZ.....Bill Petty.....West Trenton, NJ  
22665....KR0K.....Earl Cottingham Jr.....Pueblo, CO  
22760....WB1BYU.....Harrison Alderson.....Bristol, CT  
23295....N6APW.....Robert Dymond.....Belton, TX  
24607....KL7GNP.....John Bierman.....Anchorage, AK  
29654....WA1MJO.....John Neves.....Hyannis, MA  
29723....WB4NXG.....George Eickler.....Martinez, GA  
29947....N6DJY.....George Duvall.....Laguna Woods, CA  
30022....KC7AI.....Billie Reed.....Marysville, WA  
30196....KF4JA.....Elsie Horton.....N. Ft. Myers, FL  
31278....W4APE.....John Pegues.....Cheraw, SC  
31657....KG5XJ.....Woodward Finch.....El Paso, TX  
31680....KE6FC.....Aram Arabian.....Hemet, CA  
32194....WA3ISV.....Robert Green.....Berlin, MD  
32351....KD4TQ.....Paul E. White III.....Lexington, KY  
32598....WB1DWR.....Peter Kohanski.....Newington, CT  
33083....W0ORI.....Harvey Kemper Sr.....Jefferson City, MO  
33212....KC4SP.....Pearl Gunter.....Batesburg, SC  
33974....K1BKS.....Norman Witherell.....Attleboro, MA  
34589....K4DDC.....Carroll Redmill.....Jasper, AL  
34961....KA0GAJ.....Dale Allan.....Wichita, KS  
35528....WA3WHX.....Donald Houtz.....Northumberland, PA

36684....KE6TT.....Richard Earl.....Grass Valley, CA  
37235....KA5KOD.....Audrey Talley.....Jonesboro, AR  
37290....K5IHR.....Ralph Martin.....Franklinton, LA  
37772....K14IH.....Frank Paskowski.....Hanover, PA  
38298....W9EXQ.....Bob Stone.....St. Charles, IL  
38712....N2DOV.....William Christ.....Rochester, NY  
39528....KC3TA.....Katherine Watts.....Hudson, FL  
41755....KA1LGJ.....Roy Wentworth.....Northwood, NH  
42817....WB6PNL.....Wady Andary.....Apple Valley, CA  
44640....KB6NCE.....Erin Harter.....Fresno, CA  
46213....KA7GSE.....James Hoffstot.....Eugene, OR  
46254....K7XP.....Richard Schaer.....Glendale, AZ  
46366....KB6GBP.....Donald Gilbert.....Rialto, CA  
46591....N5SP.....Stanley Hecker.....Ocean Springs, MS  
46695....W1ESV.....Franklin Swezey.....N. Brandford, CT  
47666....K7AND.....Edwin Dressel.....Marysville, WA  
48214....N9HKK.....John McCawley Sr.....Saint Germain, WI  
49775....KB2BBB.....Henry Enckler.....Millville, NJ  
50128....W6LGM.....Carl Moore.....Palmdale, CA  
50332....WA5EJB.....Oscar Stowe.....San Antonio, TX  
50390....N5QB.....William Newhorter.....Midland, TX  
50551....N3BPJ.....Raymond Steever.....Newton Square, PA  
51141....KD2CP.....Clifford Menzies.....W. Long Branch, NJ  
51186....K3HCE.....William McGeehan Jr.....Baltimore, MD  
51873....N6SIF.....Nef Enriquez.....Brewster, WA  
52286....W4TQL.....Jeter Wood.....Dunnellon, FL  
54776....WA6ZLP.....John Watters.....Stockton, CA  
56957....K4HHW.....Robert McDonough.....Ponce Inlet, FL  
60750....KD4CPB.....Billie Mills.....Columbus, GA  
65318....WD0AKU.....Charles Ward.....Chanute, KS  
67283....KD4LFO.....Tommy Bennett.....Wetumpka, AL  
69526....KC7RVJ.....Melvin Silva.....Las Vegas, NV  
70059....KE4ZJC.....Earl Hickie.....New Market, TN

Please send silent key information to  
Ruth Bartholomew, NØKDB  
HC72 - Box 102A, Sullivan MO 63080-9204  
or email n0kdb@fidnet.com

Please include Call, 10-10 Number, Name, City and State, and  
date of death (if known - if not, please estimate as close as possible)

NOTE: 10-10 obtains SK Listings from various sources and errors  
could appear as many times they cannot be verified. We apologize  
for any errors. Please notify the SK Manager if any errors are found.

## New Life Members

07572.....W5WCS.....William C Springfield  
28884.....N6QQ.....John L Schroeder  
69078.....W7MC.....Sergei L Ticknor  
69598.....W5KEC.....Kenneth E Carpenter

**WE'RE ON THE WEB**  
**WWW.TEN-TEN.ORG**

# 10-10 INTERNATIONAL NEWS

## T E N T E N N E T G U I D E

DAY	ZSUM	ZWIN	CHAPTER	QTH	FREQ	DAY	ZSUM	ZWIN	CHAPTER	QTH	FREQ
M-F	1130	1230	Elmer J Fudd Net	PA	28340	WED	1400	1500	Electric City	FL	28845
SUN		0010	Twenty-Eight (1st)	VK	28360	WED	1600	1700	Gold City	GA	28425
*SUN	0300	0400	Chief Seattle	WA	28625	WED		1700	Lake Geneva	F	28185 CW
SUN		0830	Twenty-Eight (2nd)	VK	28560	WED	1700	1800	Channel Islands	CA	28340
SUN	0830	0930	Borinage	ON	28785	WED	2100	2200	Outlaws on Ten/Bounty Hunters	TX	28644
SUN	1300	1400	GB Ten/Laurel Mancunium	G	28860	WED	2200	2300	Route-66	IL	28370
SUN	1300	1400	Fort McHenry/Yodar Kritch	MD	28840	WED	2300	2359	Michigan Robins	MI	28493
SUN	1300	1400	Arlington	VA	29200	THU	0001	0100	Cradle of the Confederacy	AL	28350
*SUN		1430	Cincinnati Area Ten Tuners	OH	28960	THU	0001	0100	Battle Road	MA	28390
SUN		1530	Neanderthal Chapter	DL	28355	THU	0001	0100	Egyptian Radio Club	IL	28420
SUN	1530	1630	Steel City	IL	28420	THU	0001	0100	Cypress	FL	28465
SUN		1700	Lake Geneva	F	28416	THU	0100	0200	Gateway	MO	28650
SUN	1600	1700	Sky Blue Waters	MN	28715	THU	0100	0200	Milwaukee	WI	28365
SUN	1630	1730	Possum Trot	NC	28345	THU	0100	0200	MO-KAN Tanners	MO	28440
SUN	1700	1800	Portland 500	OR	28350	THU	0100	0200	Channel Islands	CA	28340
SUN		1815	Major League Baseball	CA	28380	THU	0100	0200	Cowtown	TX	28710
SUN		1830	Crater Lake	OR	28350	THU	0130	0230	Cowtown	TX	28460
SUN	1900	2000	Springbok	TN	28385	*THU	0300	0400	Chief Seattle	WA	28625
SUN	2030	2130	Air Capital	KS	28775	THU	0230	0330	Windfarms	CA	28485
SUN	2100	2200	Possum Trot	NC	28150 CW	THU	1300	1400	GB Ten/Laurel Mancunium	G	28870
SUN	2200	2230	South Texas Lighthorse Brigade	TX	28345	*THU		2100	Branding Iron	TX	28345
S/M	2330	0030	Dick Bass Memorial	MI	28465	THU	2200	2300	Channel Islands	CA	28345
S/M	2330	0030	Minuteman	MA	28150 CW	FRI	0001	0100	Crazy Eights	PA	28388.8
MON	0001	0100	Chesapeake Bay	MD	28435	FRI	0001	0100	Fort McHenry/Yodar Kritch	MD	28370
MON		0100	Arizona Desert 10-10 Net	AZ	28445	FRI	0001	0100	MAINE-iacs	ME	28402.5
MON		0100	Cradle of Liberty	PA	28695	FRI	0001	0100	Pine State	ME	28373
MON		0130	Cradle of Liberty	PA	28425	FRI	0200	0300	Appalachian Mountain	KY	28400
MON	0100	0200	Milwaukee	WI	28365	*FRI	0300	0400	Chief Seattle	WA	28430
MON	0130	0230	Bauxite	AR	28470	*FRI		1400	New Waterkant	DL	28355
MON	0200	0300	Sky Blue Waters	MN	28715	FRI	2130	2230	Down Under	ZL	28530
*MON	0300	0400	Chief Seattle	WA	28625	SAT	0001	0100	Fort McHenry/Yodar Kritch	MD	28370
MON	1400	1500	Major League Baseball	CA	28425	SAT	0001	0100	MAINE-iacs	ME	28402.5
MON		1700	Berlin Bears	DL	28810	*SAT	0300	0400	Chief Seattle	WA	28625
MON		1700	Colorado Quartermaster	CO	28120 PSK31	SAT	1330	1430	Trotters and Pacers	NJ	28755
MON		2030	Space Coast	FL	28355	SAT	1400	1500	59/62	F	28780
MON	2130	2200	Colorado Quartermaster	CO	28360	SAT 1st & 3rd		1500	Cast Iron Tower	DL	28133 CW
MON		2300	Oceans of the World	FL	28475	SAT 2nd & 4th		1500	Cast Iron Tower	DL	28333
MON		2359	Santa Fe Trail	IN	28695	SAT		1500	MO-KAN Tanners	MO	28440
MON	2300	2359	Trotters and Pacers	NJ	28755	SAT	1430	1530	Red River Valley/Steamboat	LA	28855
TUE	0100	0200	City of Lights	IL	28150 CW	SAT	1500	1600	Doll Chasers	TX	28433
TUE	0100	0200	Colorado Centennial	CO	28340	SAT	1500	1600	Oklahoma Route 66 Chapter	OK	28390
*TUE	0130	0230	City of Lights	IL	28720	SAT	1500	1600	Republic of Texas	TX	28460
TUE	0130	0230	Bauxite	AR	28470	SAT	1510	1610	Louisiana Pelican 10-10 Net	LA	28450
TUE	0130	0230	Oklahoma Route 66 Chapter	OK	28390	SAT		1700	Lake Geneva	F	28416
*TUE	0200	0300	Suncoast	FL	28475	SAT	1630	1730	Boomtown	TX	28402
TUE	0230	0330	Golden Bear	CA	28485	SAT	1600	1700	City of Roses	OR	28835
TUE		0300	Concho Valley Chapter	TX	28360	SAT		1730	Tango	LU	28650
*TUE	0300	0400	Chief Seattle	WA	28430	SAT		1800	Keystone/Keystone Stars	CA	28765
TUE	0300	0400	Bay Area	CA	28475	SAT	1700	1800	Lilac City	WA	28390
TUE		0500	Aloha	HI	28485	SAT		1830	Crater Lake	OR	28760
TUE	1500	1600	New Mexico Mud Ducks	NM	28835	SAT		1900	River City/Camellia Capital	CA	28317
TUE	2030	2130	Twin Cities	MN	28325	SAT		2000	Restoration Project	VE	28747
TUE		2130	Branding Iron	TX	28345	SAT		2200	Alii	HI	28730
*TUE		2300	Peshtigo Fire	WI	28380	SAT		2330	City of Melbourne	VK	28355
TUE	2300	2359	Fort McHenry/Yodar Kritch	MD	28370						
TUE	2300	2359	Great Lakes	AZ	28480	MON-SAT		1800	10-10 International		28800
T/W	2330	0030	Republic of Texas	TX	28560	MON-SAT		1800	10-10 International		28380
WED		0030	Kansas Trails	MN	28385						
WED		0100	Whitehouse	DC	28475						
WED	0001	0100	Castle Craig	CT	28375						
WED	0030	0130	All American City	AL	28400						
WED	0030	0130	Minuteman	MA	28409						
*WED		0100	Cincinnati Area Ten Tuners	OH	28800						
WED	0100	0200	Space Houston on Ten (SHOT)	TX	28488						
WED	0200	0300	10 Bar X	TX	28440						
WED	0300	0400	Edmonton Area Ten-Tenners (EATT)	VE	28520						
*WED	0300	0400	Chief Seattle	WA	28625						

(\*) New or change

All changes to the above times and/or frequencies should be referred to, or coordinated with, the Chapter Manager, K5FBS, Cliff Taylor, 22707 Red Mountain Drive, Elmendorf, TX 78112-6034, or via email at CATK5FBS@aol.com.

The Net times of those chapters not affiliated with 10-10 are given, but their accuracy cannot be assured as those do not report regularly to the Chapter Manager.

# 10-10 INTERNATIONAL NEWS

## MEMBERSHIP INFORMATION AND SERVICES

### WOULD YOU LIKE TO JOIN 10-10?

*Here is what you need:*

1. You must hold a valid amateur operator license.
2. Your valid amateur operator license **MUST** authorize or qualify you for unsupervised transmitting operations in the ten meter amateur band under your own personal call sign.
3. You must make contact with ten members of 10-10 and submit a log listing all contacts, their 10-10 number, call sign, name, date of contact, and QTH (state/province/country). A new member application and contact log is available in Section 1 on page 31 of this publication.
4. You must remit dues for one or more years full membership. Fee schedule and payment information can be found in Section 2 on page 31 of this publication.

### TYPES OF MEMBERSHIPS

*Please see fee schedule in Section 2 on Page 31*

#### **Primary Membership**

Primary membership is available with yearly dues, although there is a special incentive available when you pay for three years at once.

#### **Family Membership**

Family membership consists of a primary member and one or more family members who qualify as a 10-10 member (has made the necessary 10 contacts) and who reside at the same location and postal address. Family memberships run concurrently with that of the primary member. Add \$5 for each additional family member for each year. Only the primary member will receive a copy of the 10-10 News.

#### **Life Membership**

Life membership is available and may be paid in one lump sum or spread across two or three years. If you wish information on the extended payment plan, please contact the 10-10 Data Manager.

#### **Senior Life Membership**

Senior life membership is available to anyone who is currently 65 years of age or older. Extended payment plan is not offered with senior life membership.

**Family Life Membership** is no longer available

### Membership Renewals

Fill out fee schedule and method of payment in Section 2 on Page 31 and forward as indicated to Data Manager or DX Area Manager. Please make sure you include a copy of your address label with form. If you do not have a copy of your address label (renewing after your membership has lapsed), please include a note with your name, current mailing address, call sign and 10-10 number.

### DATA MANAGER SERVICES

#### **Call/Name/Address Changes**

All changes are to be sent to the 10-10 Data Manager. Please include your address label (or a copy) with necessary corrections.

#### **10-10 Stamps**

Self-adhesive 10-10 stamps that can be used on QSL cards, correspondence and envelopes are available for \$5 per 144 stamps.

#### **10-10 Information Brochure**

The 10-10 Information Brochure is 8 pages of everything you would want to know about 10-10. Available for \$2 postpaid along with a return address label.

#### **10-10 Roster = Hard Copy - DISCONTINUED**

The Roster is no longer available in printed form

#### **XXIQ**

XXIQ is a simple roster. It will search for a call if the 10-10 number is known or for a 10-10 number if the call is known. It is updated monthly and is available FREE at the 10-10 Web Site.

#### **XXIP**

XXIP is the expanded version of XXIQ, offering 10-10 number, call, name, address, city, state/country, membership status, expiration date, and SK status. XXIP will print a simple address label. XXIP is updated monthly and is available on a CD-ROM or by download from the LinGer web site. Order from the Data Manager: CD-ROM for \$10 US Zip Codes or \$13 DX postpaid. For download version e-mail the Data Manager <wa6poz@arrl.net> or go to <www.lingerinc.com> for instructions.

**Data Manager, 10-10 International Net, Inc.**

**PMB142**

**643 N. 98th Street**

**Omaha, NE 68114-2342**

### Awards and Certificate Guide

This item has been discontinued from production.

### Scholarship Donations

Donations to the 10-10 Scholarship Foundation are requested from each member on an annual basis to help fund the five \$1000 10-10 scholarships. Your check should be made payable to the 10-10 Scholarship Foundation and sent to:

**Larry Berger, WA2SUH #00407**

**10-10 Scholarship Manager**

**9 Nancy Blvd.**

**Merrick, NY 11566-3119**

*Catch us on the WEB*  
**http://www.ten-ten.org**

## SECTION 1 - MEMBERSHIP APPLICATION AND CONTACT LOG

Postal/Zip Code \_\_\_\_\_ E-mail Address \_\_\_\_\_

\* as listed on Page 30 of this publication

YOUR SIGNATURE \_\_\_\_\_

	10-10 NUMBER	CALL SIGN	OPERATOR'S NAME	DATE OF CONTACT	QTH (State, Province or DX Country)
1					
2					
3					
4					
5					
6					
7					
8					
9					
10					

## SECTION 2 – FEE SCHEDULE AND PAYMENT INFORMATION

10-10 FEE SCHEDULE <i>(eff 2/1/03)</i>	US Zip Codes	DX
New Members	<input type="checkbox"/> \$ 15	<input type="checkbox"/> \$ 18
Renewals (yearly)	<input type="checkbox"/> \$ 15	<input type="checkbox"/> \$ 18
Renewals - 3 year incentive	<input type="checkbox"/> \$ 40	<input type="checkbox"/> \$ 49
Family Membership (yearly)	<input type="checkbox"/> \$ 5	<input type="checkbox"/> \$ 5
Life Membership	<input type="checkbox"/> \$ 500	<input type="checkbox"/> \$ 650
Senior Life	<input type="checkbox"/> \$ 150	<input type="checkbox"/> \$ 200
Scholarship Foundation Donation	<input type="checkbox"/> \$ ____	<input type="checkbox"/> \$ ____
<i>Enter Total</i>		

*US Postal Codes and LIFE Memberships mail to*  
**Data Manager, Ten-Ten International Net, Inc.**  
**PMB142**  
**643 N. 98th Street**  
**Omaha, NE 68114-2342 USA**  
 for information email: [wa6poz@arrl.net](mailto:wa6poz@arrl.net)

***DX Applicants mail to:***  
**Carol Hugentober, WA8YL #29588**  
**DX Area Manager**  
**4441 Andreas Avenue**  
**Cincinnati, OH 45211-2622 USA**  
 for information email: [wa8yl@juno.com](mailto:wa8yl@juno.com)

☐ VISA

□ □ □ □    □ □ □ □    □ □ □ □    □ □ □ □

Good Through:

□□/□□

SIGNATURE of Cardholder \_\_\_\_\_ Date: \_\_\_\_\_

For charges this form may be faxed to 10-10 International Net, Inc. at 402-891-2481

# 10-10 QSO PARTY COVER SHEET

**Contest rules have been updated - see pages 18-19 of this issue!!!**

Callsign \_\_\_\_\_ 10-10# \_\_\_\_\_ Name used in contest \_\_\_\_\_

Name \_\_\_\_\_

Address \_\_\_\_\_

City \_\_\_\_\_

State/Province/Country \_\_\_\_\_ Zip \_\_\_\_\_

your e-mail address (for contest questions only) \_\_\_\_\_

<b>Check Event</b> WINTER PHONE ..... <input type="checkbox"/> SPRING CW/DG ..... <input type="checkbox"/> SUMMER PHONE ..... <input type="checkbox"/> FALL CW/DG ..... <input type="checkbox"/> 10-10 SPRINT ..... <input type="checkbox"/> MOBILE CONTEST ..... <input type="checkbox"/>	<b>Check Entry Type</b> INDIVIDUAL ..... <input type="checkbox"/> QRP ..... <input type="checkbox"/> 5 watts or less CW/Digital 10 watts or less Phone CLUB ..... <input type="checkbox"/> minimum of two operators at one radio <b><u>must list all operators in log</u></b>	<b>US Call Area (W0-W9) or ARRL DX Country you operated from</b>	<b>Chapter Assignment</b> (not valid for 10-10 Day Sprint) enter <b><u>none</u></b> if no assignment   NO Ground wave requirement!!! May be any Chapter you belong to
<b>Claimed Score:</b>			
Contacts WITH 10-10 number: _____		x2 = _____	
Contacts WITHOUT 10-10 number _____		x1 = _____	
Total Contacts _____		Total Pts _____	
NOTE: DUE TO MULTIPLIERS, THE MOBILE CONTEST WILL BE SCORED BY THE CONTEST MANAGER			

**MAILED ENTRIES:** All submissions must contain this cover sheet (or a reasonable facsimile), the log in UTC Date/Time order, and a Dupe Sheet in callsign order or in grid format (if more than 50 contacts).

**Mail to:** Steve Rasmussen NØWY, 312 N 6th Street, Plattsmouth NE 68048, USA

**E-MAIL ENTRIES:** All submissions must be in straight text format and must additionally include all information from this cover sheet either in separate summary or as summary at head of log. Dupe sheet is not required.

**E-Mail to:** [tentencontest@alltel.net](mailto:tentencontest@alltel.net)

**10-10 is on the web at [www.ten-ten.org](http://www.ten-ten.org)**

electronic version of this issue at [www.lingerinc.com](http://www.lingerinc.com) - logon NEWS0401 - password dw54k32

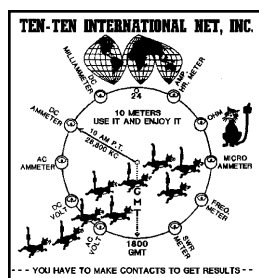
10-10 International Net, Inc.  
PMB 142  
643 N. 98th Street  
Omaha, NE 68114-2342

Address Services Requested

TIME TO RENEW? EXPIRATION DATE  
IS ON MAILING LABEL BELOW

**FIRST CLASS**

PRE-SORTED  
FIRST-CLASS MAIL  
U.S. POSTAGE  
PAID  
OMAHA, NE  
PERMIT 1799



JANUARY 2004  
(WINTER)